

# A d d e n d u m

Iowa Department of Transportation  
Office of Contracts

Date of Letting: April 16, 2013  
Date of Addendum: March 29, 2013

<b>B.O.</b>	<b>Proposal ID</b>	<b>Proposal Work Type</b>	<b>County</b>	<b>Project Number</b>	<b>Addendum</b>
012	41-C041-104	BRIDGE REPLACEMENT - CCS	Hancock	BROS-C041(104)--8J-41	16APR012.A01

---

Notice: Only the bid proposal holders receive this addendum and responsibility for notifying any potential subcontractors or suppliers remains with the proposal holder.

---

Make the following changes to the PROPOSAL SCHEDULE OF PRICES:

Change Proposal Line No. 0060 2402-2721000 EXCAVATION, CLASS 21:

From: 73.000 CY

To: 74.000 CY

Change Proposal Line No. 0070 2403-0100010 STRUCTURAL CONCRETE (BRIDGE):

From: 356.200 CY

To: 358.800 CY

If the above changes are not made, they will be made as shown here.

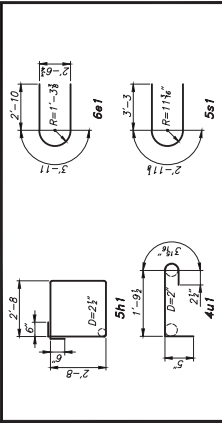
Make the following change to the plans:

Replace SHEET 7 with the attached SHEET 7:

BENCH MARK: 3" REBAR, STA. 10+75.86, L.T., ELEV.=1195.18

BAR	LOCATION	SHAPE NO.	LENGTH	WEIGHT
6e1	PIER CAP, LONGITUDINAL	U	24'-8"	371
6e1	PIER CAP, ENDS	G	9'-7"	86
5h1	PIER CAP, HOOPS	D	11'-8"	243
5r1	PIER WALL, HORIZONTAL	S	24'-8"	823
5r1	PIER WALL, ENDS	S	9'-6"	317
5r1	PIER WALL, VERTICAL	L	18'-6"	810
4u1	PIER WALL, TIES	P	2'-9"	88
TOTAL (LBS.)				2,238

**BENT BAR DETAILS**



**CONCRETE PLACEMENT QUANT. - ONE PIER**

LOCATION	UNIT	QUANTITY
PIER CAP	CU.YDS.	3.0
PIER WALL	CU.YDS.	36.6
TOTAL	CU.YDS.	45.6

**ESTIMATED QUANTITIES - TWO PIERS**

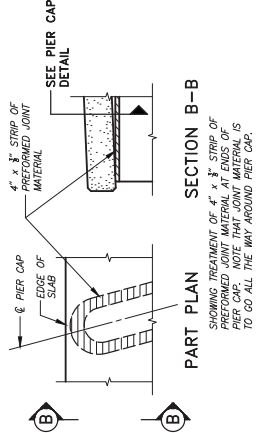
ITEM	UNIT	QUANTITY
STRUCTURAL CONCRETE (BRIDGE)	CU.YDS.	91.2
REINFORCING STEEL	LBS.	54,476
PILES, STEEL HP, 14x73, 14 @ 90'	L.F.	1,260
EXCAVATION, CLASS 21	CU.YDS.	74

**PIER NOTES**

ALL EXPOSED CORNERS OF 90° OR SHARPER ARE TO BE FILLETED WITH A 3/4" DRESSED AND BEVELED STRIP FROM THE FACE OF THE CONCRETE TO NEAR REINFORCING BAR IS TO BE 2" UNLESS OTHERWISE NOTED OR SHOWN.  
 ALL REINFORCING IS TO BE SECURELY WIRED IN PLACE BEFORE THE CONCRETE IS PLACED.  
 HP 14x73 STEEL BEARING PILING SHALL BE DRIVEN TO FULL PENETRATION, IF PRACTICABLE, BUT NOT LESS THAN 61 TONS BEARING CAPACITY PER PILE.

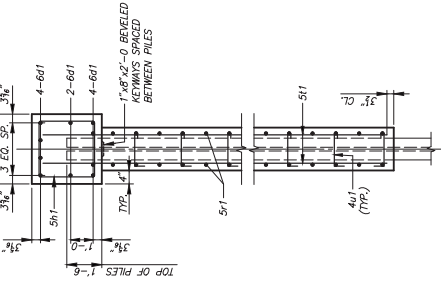
130'-0" x 24'-6" CONTINUOUS CONCRETE SLAB BRIDGE

INTEGRAL ABUTMENTS  
 39'-6" END SPANS  
 SINGLE ROW ENCASED PIERS  
 51'-0" INTERIOR SPAN  
 PIER DETAILS  
 STATION 11+05.00  
 HANCOCK COUNTY,  
 15' SKEW, RT. AHEAD  
 IOWA

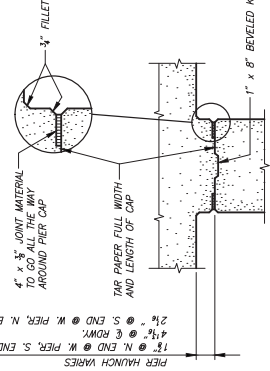


**PART PLAN SECTION B-B**

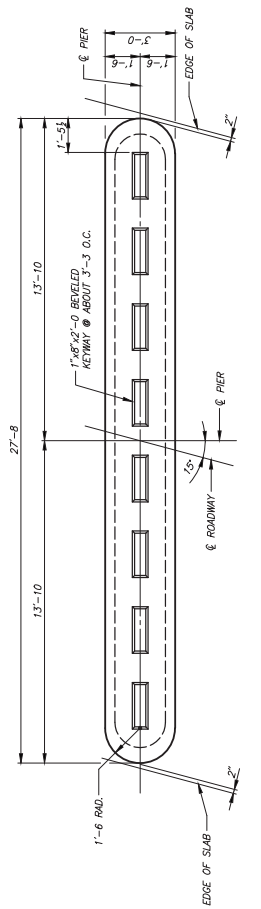
SHOWING TREATMENT OF 4" x 3" STRIP OF PREFORMED JOINT MATERIAL AT ENDS OF PIER CAP. NOTE THAT JOINT MATERIAL IS TO GO ALL THE WAY AROUND PIER CAP.



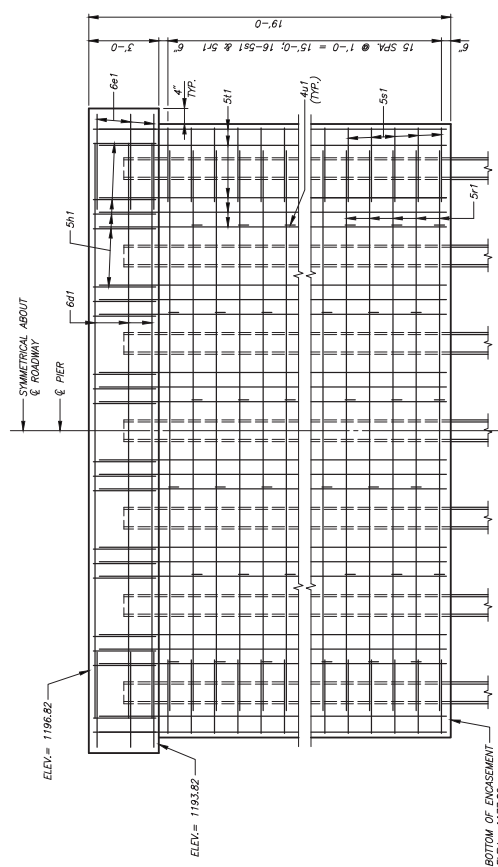
**VERTICAL SECTION**



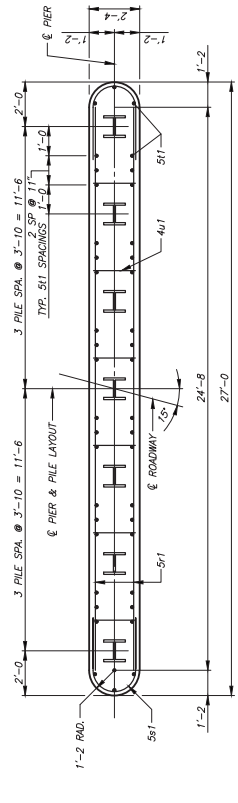
**PIER CAP DETAIL**



**PLAN**



**ELEVATION (LOOKING EAST)**



**HORIZONTAL SECTION**