



YOUR COURSE TO COLLEGE

The official guide to financial aid & the
directory of Iowa colleges & universities

2009-2010



IowaCollegeAid.gov
Your Financial Aid Connection

ABOUT IOWA COLLEGE AID

Iowa College Aid has more than 40 years of experience connecting students and families with the essential resources and services to make higher education possible. Along with our experience, we continue to expand our capabilities and services to meet and exceed the needs of students, colleges and universities, lenders and communities that we serve. We listen, understand and respond with truth and integrity to the changing needs of our customers. When it comes to service, our customers have our undivided attention.

We Serve You: As a Guarantor

- Iowa College Aid is the designated guarantor for the State of Iowa.
- Iowa College Aid pays the 1% federal default fee on Stafford and PLUS loans, saving parents and students over \$6 million each year*.
- Iowa College Aid guarantees more than \$696 million in Federal Family Education Loans annually.
- Iowa College Aid oversees school and lender federal student loan programs.
- Iowa College Aid provides a state-of-the-art financial aid delivery system to colleges, universities and lenders which ensures quality and timely delivery of funds to students and parents.

As an Administrator of State Funds

Iowa College Aid administers more than \$70 million each year in Iowa General Fund appropriations for need-based scholarships and grants. Iowa College Aid also actively pursues additional state and federal funding for increased need-based aid awards.

As an Information Resource

Iowa College Aid provides information and resources for all Iowans regarding student financial aid and college and career planning. Iowa College Aid's website provides information on scholarships, grants, student loans, career decision making, research data and much more.

Our Mission

We advocate for, and provide a continuum of services to support, Iowa students and families as they explore and finance educational opportunities beyond high school.

*The Iowa College Student Aid Commission will pay the 1% Federal Default Fee for Federal Stafford and PLUS Loans it guarantees from 7/1/09 to 6/30/10 unless statutory, regulatory, or other changes occur that adversely impact the agency.

Important Dates to Remember

September 9, 2009

Registration deadline to take the SAT on October 10, 2009. Go to www.collegeboard.com/student/testing/sat/calenefees.html for other available test dates.

September 18, 2009

Registration deadline to take the ACT on October 24, 2009. Go to www.actstudent.org/regist/nextdates.html for other available test dates.

October 4, 2009

The Golden Circle College Fair will be at the Polk County Convention Complex at 501 Grand Avenue in Des Moines from 12:30 - 3:00 p.m. This is the largest college fair in Iowa with approximately 150 colleges and universities in attendance. Information on other college fairs throughout the state is available in the high school student planning section of the Iowa College Aid website at www.iowaCollegeAid.gov.

January 1, 2010

The FAFSA is available on the web at www.fafsa.ed.gov.

All Iowa Opportunity Scholarship and All Iowa Opportunity Foster Care Grant applications available.

February 1, 2010

Robert C. Byrd Honors Scholarship application deadline.

May 1, 2010

Governor Terry E. Branstad Iowa State Fair Scholarship application deadline.

May 10, 2010

Robert D. Blue Scholarship application deadline.

July 1, 2010

Priority FAFSA deadline for Iowa scholarships and grants (Iowa Tuition Grant, Iowa Vocational-Technical Tuition Grant, Iowa Grant and Barber and Cosmetology Arts and Sciences Tuition Grant).

2009-2010 OFFICIAL GUIDE TO FINANCIAL AID

You can rely on Iowa College Aid for free and reliable information to guide you through the college financial aid process.

We are a state agency dedicated to serving Iowa students by awarding more than 25,000 scholarships and grants each year. Last year we guaranteed loans for more than 77,000 Iowans. Iowa College Aid's role as Iowa's designated guarantor for the Federal Family Education Loan Program (FFELP) ensures availability of funds while making a real difference in lowering the cost of borrowing. Students, families and counselors can learn about low-interest loans and special loan forgiveness opportunities for service in the teaching or nursing professions through Iowa College Aid's valuable information resources.

Visit Iowa College Aid's website at www.iowaCollegeAid.gov or call the Information Service Center at 877-272-4456 for detailed information regarding programs and services.

Look for these special tips throughout this book.



Go Online



Money Matters



Deadline Note



Important Info



Financial Keys

WHY COLLEGE?

There is no doubt that the decision to go to college can change your future. Nothing opens doors of opportunity like a college degree. With today's quickly changing workforce and increased reliance on technology, more and more jobs require an education. Many employees change jobs up to seven times over a lifetime. Employers look for people who already possess skills necessary to perform certain jobs. Even entry-level jobs previously requiring only a high school diploma may now require more complex skills and education.

The Top 10 Reasons to Go to College:

10. Today, many jobs require a college degree. Over 60% of new jobs created between today and 2016 will require some type of education after high school.
9. More than two-thirds of the fastest-growing occupations require college degrees.
8. If you have a college education, you will have many more career possibilities than someone who doesn't.
7. More education means more income. A college degree will help you earn, on average, almost twice the amount you could with a high school diploma.
6. Exposure to new thoughts, people and experiences expands your world and makes you more self-assured and more confident.
5. You have greater job security as a college graduate.
4. A degree allows preparation for a specific career; therefore, college can help you get a job in a career field that interests you.
3. Going to college may allow you to continue pursuing extra-curricular interests such as athletics, music, drama, cultural activities, etc.
2. The college experience can help you learn independence, self-awareness and responsibility.
1. **And the No. 1 Reason to Go to College...so you won't be living in your parents' basement when you are 30 years old!**

U.S. Bureau of Census, Current Population Study, Educational Attainment in the United States 2007
U.S. Bureau of Labor - Bureau of Statistics May 2007 State Occupational Employment Statistics Survey



Helpful Websites

www.iowaCollegeAid.gov
www.IHaveaPlanIowa.gov
www.FAFSA.ed.gov
www.FAFSA4caster.ed.gov
www.MappingYourFuture.org
www.going2college.org

www.CollegelsPossible.org
www.FastWeb.com
www.CollegeBoard.com/pay
www.icansucceed.org
www.knowhow2go.org
www.actstudent.org

FOUR STEPS TO FINDING FUNDS

Financial aid comes from many sources – the State of Iowa, the federal government, individual colleges and universities, private businesses or foundations, professional organizations, employers, community trusts, civic groups and other entities.

There are many different ways for families to pay for a college education, and the financial aid process itself is not as complicated as most people think. The process has become more standardized and web-friendly, and there are many financial aid professionals throughout Iowa who are available to respond to your questions or concerns. Follow these four steps and you'll be an expert in navigating the financial aid process.

1. Seek and Apply for Grants and Scholarships

Grants

Grants are a form of financial assistance offered to students with the greatest financial need. Grants do not need to be repaid and are available to students who meet the specific requirements of each grant program. Recipients of Iowa-funded grants must be Iowa residents. Iowa-funded grants and scholarships assist more than 25,000 students every year and additional grant support is extended through federal programs. Detailed grant information about eligibility and the application process can be found on page 10.

Scholarships

Various state, regional and local scholarships are available to Iowa students. Scholarships are awarded competitively to students who meet the qualifications established for individual programs (e.g., high ACT/SAT scores, leadership or involvement in high school or community activities, talent or skill in an academic area, proficiency in sports or fine arts, etc.). Scholarships do not need to be repaid. Some are one-time awards, while others are renewable for multiple years of education.



Ask your high school counselor about scholarships available to students from your school or geographic area. Iowa College Aid provides links to several reputable scholarship searches. Visit www.iowaCollegeAid.gov and select helpful links under Commission Central.

Keys to Getting Scholarships:

- Apply early (start looking in your junior year of high school).
- Find out if local scholarships are available from community foundations, civic or fraternal organizations, or through a corporation or business with a presence in your community.
- Prepare a calendar with the deadlines for all applications, paying particular attention to the early deadlines for some college-specific scholarships.
- Apply for as many scholarships as you can – hundreds are available, but selectively choose those with criteria matching your situation.
- Follow application directions precisely; DO NOT MISS DEADLINES.
- Line up letters of recommendation from references who can characterize your abilities.
- Do a thorough, thoughtful job on the essays.

Unfortunately, there are fraudulent scholarship search services that pose as legitimate agencies. They will often guarantee you a scholarship or promise to do all of the work for you for a fee. Never provide anyone with your bank account information. No one can guarantee you a scholarship except for the organization that offers the award. If something sounds too good to be true, it probably is. The Federal Trade Commission (FTC) advises students to be cautious of some of the more common lines in scholarship scams such as:

"The scholarship is guaranteed or your money back."

"You can't get this information anywhere else."

"I just need your credit card or bank account number to hold this scholarship."

"We'll do all the work."

"The scholarship will cost some money."

"You've been selected by a 'national foundation' to receive a scholarship."

"You're a finalist" in a contest you never entered.

Contact Iowa College Aid at 877-272-4456 if you have questions regarding a particular scholarship program or agency.



The Federal Trade Commission offers tips on recognizing scams & how to file a complaint:
www.ftc.gov/bcp/menus/consumer/education/scholarships.shtm

2. Complete the Free Application for Federal Student Aid (FAFSA)

To the extent possible, parents and students are primarily responsible for paying the costs of a college education. This means the family's financial circumstances will be taken into account first to determine the family's ability to pay. After that, the student's eligibility and the availability for financial aid are determined. To start this process, all students should complete a FAFSA.

Your Free Application for Federal Student Aid

Just about every family is eligible for some form of financial aid—grants, scholarships, work-study or student loans. To receive this aid, you must complete a FAFSA. The FAFSA is a standardized form used to determine a student's financial need.



A completed FAFSA serves as your application for many State of Iowa scholarships and grants (Iowa Tuition Grant, Iowa Vocational-Technical Tuition Grant, Iowa Grant and Barber and Cosmetology Arts and Sciences Tuition Grant) and federal Pell, Academic Competitiveness, SMART and SEOG grants. The All Iowa Opportunity Scholarship, All Iowa Opportunity Foster Care Grant, and the ETV program require an additional application along with the completed FAFSA. The FAFSA data determines eligibility for Stafford Loans and other forms of student aid.

Who Completes the FAFSA?

Typically, student and parent information is required when completing the FAFSA form. However some students are considered independent and are not required to provide parental information. This means only the student's information is required on the FAFSA. A student is considered to be an independent student if he or she meets one of the following conditions:

- 24 years old or older
- Graduate student
- Married
- Provides more than 50% financial support for dependents
- Veteran of the U.S. armed forces
- Orphan or ward of the court until age 18
- Currently serves on active duty in the armed forces for other than training purposes

If you do not meet any of the independent student criteria, parental information **must** be provided on the FAFSA. This is true even if your parents feel they are unable to pay or if they want you to pay for your college education on your own. Without parental data, the FAFSA will not be processed and you will not receive financial assistance for college. If your parents want you to pay for your own education, that is certainly one choice. But, if they refuse to provide financial information on the FAFSA, you will be denied access to most financial aid programs, even federal student loans. In this case, you may end up receiving no help at all in paying for college.

Where to Get your FAFSA

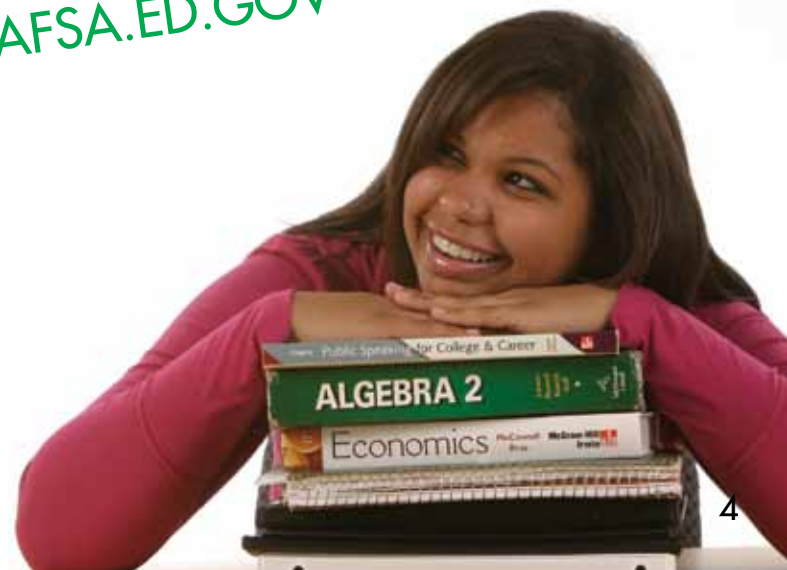
FAFSA on the Web is an online version of the application. The web-based form is quick, easy and secure. It includes online assistance and prompts. Because of its ease, FAFSA on the Web is the preferred process used by most students and families. It is available online after January 1.



Find FAFSA on the Web at these Internet sites:
www.iowaCollegeAid.gov or www.fafsa.ed.gov.

The paper version of the FAFSA may be obtained by visiting www.federalstudentaid.ed.gov/fafsa/fafsa_options.html or calling 800-4-FEDAID (800-433-3243).

WWW.FAFSA.ED.GOV



FAFSA Dates & Deadlines

Your completed FAFSA should be submitted as soon after January 1 as possible to receive financial aid in the next academic year.

July 1 is the application deadline for many grants and scholarships funded by the State of Iowa. Because your FAFSA serves as the standard application for State of Iowa scholarships and grants, your completed FAFSA must be received by the processing center no later than July 1. All properly completed forms received on or before July 1 will be given priority status for state-funded programs.

Most colleges and universities have priority deadlines. Your FAFSA must be filed on or before these dates to be considered for limited federal or institutional financial aid.



Most college and university financial aid offices will need to see your FAFSA data much earlier—in February or March for some institutions.

You must complete ALL required items on the FAFSA form. Your application will be delayed if you fail to include your Social Security Number, proper signatures or other requested information. Such a delay may cause you to miss a deadline or lose priority consideration.

To fill out the FAFSA form, you will need the following current financial documents for you and your parents as well as your Federal Personal Identification Number (PIN) (go to www.pin.ed.gov to obtain)

- Federal income tax returns
- W-2 forms
- Records of untaxed benefits received
- Bank statements
- Records of other savings and investments such as stocks, bonds and mutual funds

Gather these documents and complete the FAFSA.
You may submit your FAFSA after January 1.

Specify Your College Choices

As you complete your FAFSA, you will be asked to provide a code for each college or university you are considering for enrollment. The inclusion of the six-digit code(s) will ensure that the report from your FAFSA is shared with campus officials who will evaluate your eligibility for various forms of state, federal and institutional aid. Financial aid codes are typically listed in admission materials sent to prospective students.



You will find the six-digit FAFSA codes for most Iowa colleges and universities beginning on page 30. The full list of Iowa financial aid codes can also be found on Iowa College Aid's website at: www.iowaCollegeAid.gov.

Factors in Choosing a College:

- Cost
- Location
- Size/enrollment
- Academic programs and majors
- School expertise
- Diversity
- Average ACT score
- Extracurricular activities/campus life
- Support services
- Safety and security
- Type of learning environment
- Faculty/student ratio
- Housing options
- Graduation rates
- Job placement rates



Your FAFSA Calculation—Expected Family Contribution (EFC)

The U.S. Department of Education uses your FAFSA to calculate your Expected Family Contribution (EFC), the figure that is used to determine your financial aid eligibility.

Variables that determine your EFC include income and net worth for you and your parents, family size, age of older parent, state and federal taxes, and number of family members attending college. You may use a financial aid calculator to estimate your EFC (the estimate is unofficial).



Visit www.FAFSA4caster.ed.gov to receive an early estimate of your Expected Family Contribution (EFC). When you are ready to apply for aid, you can easily transition to FAFSA on the Web.

Your EFC may change from year to year as your family size, number of students in college or income changes. Even if you feel that your family's income will be too high to receive financial aid, you should still complete the FAFSA so colleges and universities know you desire other forms of financial assistance. Many scholarships and loans are awarded to students who are not eligible for need-based financial assistance. It is very important that you file a FAFSA each year.

SAMPLE EFC CALCULATION FOR A DEPENDENT STUDENT:*

Parents' combined income	\$60,000
Student's income	\$ 5,000
Parents' assets	\$10,000
Student's assets	\$ 950
Age of older parent	60
Family size (parents & children)	4
Number in college	1
Parents' contribution	\$ 4,955
Student's contribution	\$ 883
Expected Family Contribution per year (EFC)	\$ 5,838

*This illustrates an approximation of the Federal EFC figure that is calculated when you file a FAFSA.



Website addresses and telephone numbers are listed in the profile data for Iowa colleges and universities located in the back of this guide. Visit college websites for more information.



3. Your Student Aid Report (SAR)

If you filed your FAFSA electronically, you will receive an electronic student aid report (SAR) within a few days of submitting your completed FAFSA. (SAR results may take 3 weeks if you filed a paper FAFSA.) The SAR contains Expected Family Contribution (EFC) information, as well as initial information about your Pell Grant eligibility. Colleges and universities also use the SAR data to determine eligibility for other financial aid programs.

Read your SAR carefully and follow any instructions. You will be notified of your eligibility for State of Iowa assistance, federal financial aid and college-specific assistance through financial aid award letters from the colleges or universities where you have applied. This is explained in Step 4.

Financial Need vs. College Costs

Financial Need = COA - EFC

Your Financial Need is equal to the Cost of Attendance (COA), minus your Expected Family Contribution (EFC). The cost of attendance is more than just the amount charged for tuition. It includes estimated costs for books, fees and living expenses. The cost of attendance is determined by the college or university, and will vary by type of school, location and major course of study.

Your EFC will remain the same in a given year (unless an unusual family situation arises), regardless of which college or university you attend. The amount of financial aid you may receive cannot exceed the total cost of attendance at each college or university. Your financial need will fluctuate, however, depending on the college or university that you attend. This is shown in the sample financial aid worksheet, located below, that uses the EFC from the example on page 6 and applies the data to the costs of Colleges A, B and C.

SAMPLE FINANCIAL AID WORKSHEET

The expenses that make up the cost of attendance in this example are based on full-time attendance for a full academic year, August–May. These figures reflect estimated costs for Iowa colleges and universities. The specific college costs for the 2009-10 academic year are listed in the profiles for each college and university beginning on page 30. Use this example to gain a better understanding of how colleges and universities calculate financial need.

SAMPLE FINANCIAL AID WORKSHEET (Financial Need in relation to Cost of Attendance)				
College/University costs	School A	School B	School C	Your Choice
Tuition and fees	\$ 3,540	\$ 6,544	\$ 24,892	\$
Room and board	\$ 1,725	\$ 7,673	\$ 7,500	\$
Books and supplies	\$ 1,344	\$ 1,040	\$ 900	\$
Transportation and personal	\$ 5,304	\$ 3,360	\$ 3,500	\$
Cost of attendance	\$ 11,913	\$ 18,617	\$ 36,792	\$
Less EFC*	-\$ 5,838	-\$ 5,838	-\$ 5,838	-\$
FINANCIAL NEED:	\$ 6,075	\$ 12,779	\$ 30,954	\$

*FAFSA results determine EFC

The total amount of financial aid that a student may receive from all sources cannot exceed financial need. In this example, if a student attends School B, the total amount of financial aid cannot exceed \$12,779.



Meeting College Costs

There are many ways to meet college costs, so don't automatically exclude higher-cost colleges from your consideration. Look at all types of academic and campus environments to find one that is best for you.

Once you explore all avenues of funding and reach the point where you are notified of your financial aid package (Step 4), you may see that the institutional financial assistance offered by higher-cost colleges and universities may bring costs closer to those of less expensive institutions.

Remember, financial need is met through a combination of federal, state and institutional grants; scholarships from numerous sources; college savings plans and other family savings; student and parent loans; and student employment. The financial aid package prepared by college officials to meet your family's specific needs will help you determine the best financial strategies to meet any unmet need.



Paying for college is primarily a family responsibility that requires family decisions. Your parents may have questions about their role in financing the cost of your education. Many parents are willing to do whatever is necessary to get their child through college. On the other hand, some parents feel that their child should be responsible for paying for his or her own education, regardless of the parents' income or resources. There are also those who feel the government should foot the entire bill. The truth is that college expenses will be paid from family resources first, then scholarships, grants and institutional aid, student employment and loans.

To ensure you have access to as much financial assistance as possible, you and your parents need to complete the FAFSA. Then you can decide as a family how you will cover your educational expenses. Keep in mind that college officials recognize it is not realistic for many families to pay the full Expected Family Contribution (EFC) from out-of-pocket funds or from a family's savings. Many families choose to replace a portion of the EFC with parent and/or student loans.

4. Award Notification–Review Aid Offers; Choose the College and Financing Plan for Your Needs

Upon admittance, each college or university specified on your FAFSA will present you with an award letter describing the financial aid it can offer. This award letter will include the state and federal aid you are eligible to receive, as well as college-specific scholarships. It is likely that your package also will include one or more types of student loans for you to consider.

Evaluate the aid offered in the award letter(s). The Financial Aid Award Evaluator, one of the interactive calculators available in the student section of the Iowa College Aid website, www.iowaCollegeAid.gov, can help you compare award letters from different colleges. When comparing aid packages from more than one college, consider how much assistance is from scholarships and grants (which do not have to be repaid) and how much is from loan support (which must be repaid). Be certain you understand the terms and conditions of each loan. Ask school officials about any terms or provisions needing clarification.



NOTE THE DEADLINE FOR YOUR RESPONSE TO EACH AWARD LETTER.

To accept the financial aid package offered, follow all instructions. This is likely to involve signing and returning documents by a specified deadline. You may be asked to provide additional information to college or university officials. Don't miss deadlines for accepting aid or the funds could be given to other students. Talk to campus officials if there is an unusual circumstance that delays your response.

The award letter sent by your selected college or university will specify the kind of loan(s) for which you are eligible. As you and your family prepare a budget to meet the expenses you will face as a student, you may want to consider the benefits of using the government's low-cost student loans or other financial strategies that may be available to you.

Federal Stafford student loans and Parent PLUS Loans are offered by the federal government at very reasonable rates to help families finance educational expenses. The student loan program is described in detail beginning on page 14.



Student loans can provide a tremendous return on your investment if you borrow wisely and don't borrow more than you need! All loans are not alike in terms of the fees charged to borrowers and repayment conditions. Be a smart consumer – plan your debt carefully, and you may never make a better financial investment.



Continue to research scholarship availability. While much of the scholarship process begins in the fall or early winter, some organizations may use spring dates for scholarship selection. Explore the array of private scholarships that may be available from businesses, local charitable foundations, religious organizations or civic and fraternal organizations. Have reference letters ready and meet application deadlines.



There are a variety of money-saving tax benefits available to taxpayers that may help reduce the overall cost of a college education. The IRS offers various tax savings (deductions or credits) to individuals and families paying for higher education expenses. You can find additional information at www.iowaCollegeAid.gov, under the parent's tab, or consult the IRS's Publication 970 on Tax Benefits for Education.



GRANT AND SCHOLARSHIP DETAILS

STATE GRANTS

The State of Iowa appropriates funding for several grant programs to provide families with access to and a choice of higher education opportunities. Students who receive Iowa-funded grants and scholarships must be Iowa residents and attend an Iowa college or university. Federal grants and student loans are awarded to both Iowa and non-resident students. Grants do not have to be repaid and can significantly reduce college expenses.

Iowa Tuition Grant

Iowa Tuition Grants are awarded to Iowa students enrolled at Iowa's eligible private colleges and universities. Priority is given to applicants with the greatest financial need. Nearly 16,600 undergraduate students receive these grants each year. The maximum award is \$4,000 per year for up to four years of full-time undergraduate study. Part-time students may be eligible for adjusted amounts.

How to apply: The FAFSA serves as the application. Submit it as soon as possible after January 1. By completing your FAFSA early in the year, the data is sent to the financial aid offices of the colleges and universities you are considering. If you are eligible to receive an Iowa Tuition Grant, notification will be included on your award letter from the college or university. To receive consideration for an Iowa Tuition Grant, your FAFSA must be received at the processing center on or before July 1 annually.

Iowa Vocational-Technical Tuition Grant

Vocational-Technical Tuition Grants assist Iowa residents in vocational-technical or career option programs at Iowa community colleges. The maximum grant is \$1,200 per year for up to two years of education. The amount is adjusted for part-time study.

How to apply: The FAFSA serves as the application. Submit it as soon as possible after January 1. By completing your FAFSA early in the year, the data is sent to the financial aid offices of the colleges and universities you are considering. If you are eligible to receive an Iowa Vocational-Technical Tuition Grant, notification will be included on your award letter from the college. To receive consideration, your FAFSA must be received at the processing center on or before July 1 annually.

Iowa Grant

The Iowa Grant is available to assist Iowa residents attending any accredited public or private college or university in Iowa. Priority is given to students with the greatest financial need. The maximum grant is \$1,000 per year for up to four years of undergraduate study (adjusted for less than full-time enrollment).

How to apply: The FAFSA serves as the application. Submit it as soon as possible after January 1. By completing your FAFSA early in the year, the data is sent to the financial aid offices of the colleges and universities you are considering. If you are eligible to receive an Iowa Grant, notification will be included on your award letter from the college or university. To receive consideration, your FAFSA must be received at the processing center on or before July 1 annually.

Iowa National Guard Educational Assistance Grant

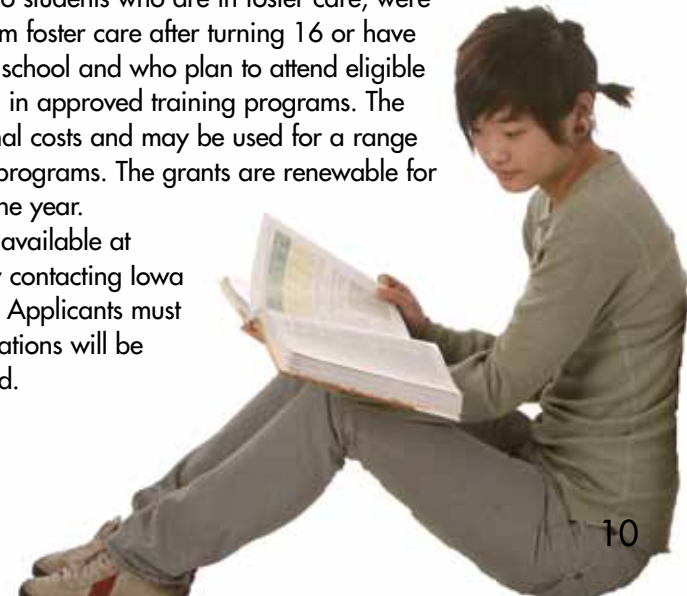
The Iowa National Guard Educational Assistance Grant provides annual awards to Iowa National Guard members who attend eligible Iowa colleges and universities. Maximum individual awards cannot exceed the average resident tuition rate at Iowa Regent Universities. For 2009-2010, the average resident tuition rate for full-time students at Iowa Regent Universities is \$6,704. The Iowa Adjutant General determines eligibility.

How to apply: A new application must be completed each year. Applications are available online at www.IHaveaPlanIowa.gov or by contacting the Iowa National Guard Headquarters, Personnel Office, 7700 NW Beaver Drive, Johnston, Iowa 50131-1902.

All Iowa Opportunity Foster Care Grant and Education and Training Voucher (ETV) Programs

The All Iowa Opportunity Foster Care Grant and Education and Training Voucher (ETV) programs provide grants to students who are in foster care, were in foster care, were adopted from foster care after turning 16 or have graduated from a state training school and who plan to attend eligible colleges or universities, or enroll in approved training programs. The grant programs cover educational costs and may be used for a range of education or career training programs. The grants are renewable for programs that extend beyond one year.

How to apply: Applications are available at www.IHaveaPlanIowa.gov or by contacting Iowa College Aid at 877-272-4456. Applicants must also complete a FAFSA. Applications will be accepted until funds are depleted.



STATE GRANTS, Continued

Barber and Cosmetology Arts and Sciences Tuition Grant

The Barber and Cosmetology Arts and Sciences Tuition Grant is available to assist Iowa residents enrolled in a course of study at one of Iowa's eligible licensed barber schools or schools of cosmetology arts and sciences. Priority is given to students with the greatest financial need. The maximum grant award is \$1,200 per year.

How to apply: Complete and submit a FAFSA at www.fafsa.ed.gov as soon as possible after January 1.

FEDERAL GRANTS

Federal grants are awarded to both Iowa and non-resident students. Eligible students can receive these federal grants for attendance at any post-secondary educational institution participating in the program.

Pell Grants

Pell Grants are funded by the federal government to assist the neediest undergraduate students. For many students, Pell Grants provide a financial aid foundation to which aid from other federal and non-federal sources is added. The maximum grant is \$5,350. The average Pell Grant given to Iowa students last year was \$2,528. Data from your FAFSA determines Pell Grant eligibility.

How to apply: Submit a FAFSA as soon as possible after January 1.

Academic Competitiveness Grants (ACG)

Academic Competitiveness Grants (ACG) are available to students who take challenging courses in high school. These grants are available for Pell-eligible students who have successfully completed recognized rigorous high school programs. An eligible student may receive an Academic Competitiveness Grant of up to \$750 for the first academic year of study and up to \$1,300 for the second academic year of study. Students may be eligible for the Academic Competitiveness Grant by completing one of the three Iowa recognized rigorous programs outlined in the chart to the right. To determine if you qualify for an Academic Competitiveness Grant, go to <http://studentaid.ed.gov/PORTALSWebApp/students/english/newprograms.jsp> or contact your college or university financial aid office.

Eligibility:

- U.S. citizen or eligible non citizen.
- Federal Pell Grant recipient for the same award year.
- Enrolled at least half time in the first or second year of an undergraduate degree or certificate program at a two-year or four-year degree-granting institution.
- Completion of a recognized rigorous secondary school program of study (after January 1, 2006, if a first-year student, and after January 1, 2005, if a second-year student; see chart below).
- A first year student who was previously admitted to an ACG-eligible undergraduate program while in high school will qualify only if he/she was above compulsory school attendance age upon admission into the ACG-eligible program.
- A second-year student also must have a cumulative grade point average of at least 3.0 on a 4.0 scale at the end of the first academic year.
- Must not be in default on a federal student loan or owe an overpayment on other federal student aid.

How to apply: Complete and submit a FAFSA as soon as possible after January 1. If you complete the FAFSA online, FAFSA on the Web will predetermine if you are eligible to answer the Academic Competitiveness Grant questions.

Iowa Recognized Rigorous Programs of Study

A set of courses similar to the State Scholars Initiative.

This program of study requires passing grades in the following:

- Four years of English;
- Three years of math (including Algebra I and a higher level course such as Algebra II, geometry or data analysis and statistics);
- Three years of science including one year each of at least two of the following: biology, chemistry & physics;
- Three years of social studies; and
- One year of a language other than English.

Advanced Placement (AP) or International Baccalaureate (IB) courses and test scores.

This program requires a minimum of two Advanced Placement or International Baccalaureate courses in high school and a minimum passing score on the exams for those classes. Students must score 3 or higher on AP exams and 4 or higher on IB exams.

Iowa Coursework Requirements. This program requires:

- Four years of English;
- Three years of math (3 years includes, but is not limited to, the following selection or comparable courses: Algebra I, Algebra II, geometry, integrated math I, integrated math II, integrated math III, trigonometry, pre-calculus, calculus, statistics);
- Three years of science (3 years includes, but is not limited to, the following selection or comparable courses: biology, chemistry, physics, anatomy/physiology, earth/space science, astronomy, general science, environmental studies, integrated sciences);
- Three years of social studies; and
- One year of foreign language OR three courses in a career and technical sequence.



National SMART Grants

National Science and Mathematics Access to Retain Talent Grants (SMART Grants) are available to students who pursue college majors that are in high demand, such as math, science, technology, engineering and foreign languages critical to the national security of the United States. An eligible student may receive a National SMART Grant of up to \$4,000 for each of the third, fourth and, if applicable, fifth academic years of study.

Eligibility:

- U.S. citizen or eligible non citizen.
- Federal Pell Grant recipient in the same award year.
- Enrolled at least half time in the third or fourth year of an eligible undergraduate degree program, or the fifth year of an undergraduate degree program that requires five years of coursework.
- Major in physical, life or computer sciences, engineering, mathematics, technology or a critical foreign language.
- Have at least a cumulative 3.0 grade point average on a 4.0 scale at the end of each term.
- Must not be in default on a federal student loan or owe an overpayment on other federal student aid.

For a listing of majors that qualify for the SMART Grant program go to the Scholarships and Grants link at www.iowaCollegeAid.gov or contact your college or university financial aid office.

How to apply: Complete and submit a FAFSA as soon as possible after January 1. If you have questions about eligibility for National SMART Grants, please contact your college or university financial aid office.

Supplemental Educational Opportunity Grants (SEOG)

Federal Supplemental Educational Opportunity Grants (SEOG) are based on financial need as determined by the results of the FAFSA and may be used at any college or university. Students with exceptional financial need who are eligible for Pell Grants are given priority. Eligible recipients may receive between \$100 and \$4,000 per year depending on when they apply, financial need, the funding at the college or university, and the policies at college or university financial aid offices.

How to apply: Submit a FAFSA as soon as possible after January 1.

Teacher Education Assistance for College and Higher Education Grants (TEACH Grant)

Teacher Education Assistance for College and Higher Education Grants were created to help all levels of collegiate students enrolled in teaching programs pay for their college education. In exchange for receiving a TEACH Grant, recipients must agree to serve as full-time teachers in a high-need field in a public or private elementary or secondary school that serves low-income students. These grants are available to eligible undergraduate, post-baccalaureate and graduate students for a maximum amount of \$4,000 per year. The award amount is reduced for students enrolled on

a part-time basis. Academic standards of at least a 3.25 GPA or a score above the 75th percentile on at least one standardized admissions test battery apply to all recipients, with the exception of graduate degree students who are current teachers or retirees from another occupation who possess expertise in a field where there is a teacher shortage or former teachers pursuing a high-quality alternative certification. For additional TEACH Grant information, contact your college or university financial aid office.

Grant Recipients Must:

- Be U.S. citizens or eligible non-citizens.
- Participate in TEACH Grant counseling before each annual award and graduation.
- Be enrolled as an undergraduate, post-baccalaureate or graduate student in a postsecondary educational institution that has chosen to participate in the TEACH Grant Program.
- Be enrolled in a program that is necessary to begin a career in teaching or plan to complete such coursework. Such coursework may include subject-area courses (e.g., math for a student who intends to be a math teacher).
- Sign a TEACH Grant Agreement to Serve before each annual award.
- Serve as a full-time teacher for a total of not less than four academic years within eight years of completing a teaching program.
- Teach in a high-need field (see the box below).
- Serve as a highly qualified teacher at a low-income school identified in the USDE's Annual Directory of Designated Low-Income Schools for Teacher Certification. To see the directory, go to the Scholarships and Grants section at www.iowaCollegeAid.gov and select Federal Grants. In Iowa, highly qualified means to hold an endorsement in the subject area taught. The standards may vary by state.
- Provide verification of employment after each year of fulfilling the teaching obligation in the form of a certification by the elementary or secondary school's chief administrative officer.

How to apply:

Interested students must file a FAFSA in addition to completing the TEACH Grant Agreement to Serve at <http://teach-ats.ed.gov>.

Important: In the event the TEACH Grant Agreement is breached, the TEACH Grants will become unsubsidized Direct Stafford Loans that must be repaid, including the interest accrued from the original disbursement date.

HIGH-NEED FIELDS

- Bilingual Education
- English Language Acquisition
- Foreign Language
- Mathematics
- Reading Specialist
- Science
- Special Education
- Other identified teacher shortage areas

These are teacher subject shortage areas (not geographic areas) that are listed in the Department of Education's Annual Teacher Shortage Area Nationwide Listing. To access the full listing, please go to the Scholarships and Grants section at www.iowaCollegeAid.gov and select Federal Grants.

SCHOLARSHIPS

All Iowa Opportunity Scholarship

The All Iowa Opportunity Scholarship is a need-based, state-funded program available to assist Iowa students with college expenses. Students attending eligible Iowa colleges and universities may receive awards of up to \$6,704*. Priority will be given to students who participated in the Federal TRIO Programs, graduates from alternative high schools and to homeless youth.

All Iowa Opportunity Scholarships are renewable for a second year if the student is attending an Iowa community college.

Eligibility:

- Iowa resident who begins initial enrollment at an eligible Iowa college or university within two academic years of graduating from high school.
- Achieve a minimum of 2.5 cumulative GPA on a 4.0 scale or its equivalent.
- Enroll for at least 3 semester hours (or the trimester or quarter equivalent) in a program leading to an undergraduate degree.

How to apply: Go to www.IHaveaPlanIowa.gov to apply online before May 1 each year. Applicants also must complete a FAFSA.

** Maximum individual awards cannot exceed the average resident tuition rate at Iowa Regent Universities. For the 2009-2010 academic year, the resident average tuition rate for full-time students at Iowa Regent Universities is \$6,704.*

Robert C. Byrd Honors Scholarship

The Byrd Honors Scholarship Program provides renewable scholarships of up to \$1,500 per year to Iowa high school seniors who demonstrate outstanding academic achievement. The competitive selection is determined by academic officials. Recipients may attend any accredited postsecondary institution in the United States.

Eligibility:

- Iowa resident/high school senior
- Minimum 3.5 GPA and 28 ACT/1860 SAT test scores
- Class ranking in top 10 percent
- Applicants also must meet specific course requirements including: two years of the same foreign language, three years of social studies, science (including 1 year each of biology, chemistry and physics), and math (beyond general science and pre-Algebra), and four years of English

How to apply: The deadline is February 1. Applications are available in October online at www.IowaCollegeAid.gov or from high school counselors.

Robert D. Blue Scholarship

The Robert D. Blue Scholarship, named after former Iowa Governor Robert D. Blue, provides scholarships ranging from \$500 to \$1,000 to Iowa students who demonstrate literary and scholastic ability; exhibit qualities of truth, courage and fellowship; and display moral force of character. Applicants can be current high school seniors, or students already enrolled at Iowa colleges or universities.

How to apply: The deadline is May 10. The online application will be available at www.IHaveaPlanIowa.gov after January 1, 2010.

Governor Terry E. Branstad Iowa State Fair Scholarship

This scholarship, named after former Iowa Governor Terry E. Branstad, recognizes outstanding high school seniors who have actively participated in the Iowa State Fair. Up to four scholarships ranging from \$500 to \$1,000 are awarded each year to Iowa students who enroll at Iowa colleges or universities.

How to apply: The deadline is May 1. Applications will be available online at www.IHaveaPlanIowa.gov after January 1, 2010.

COLLEGE AND UNIVERSITY SCHOLARSHIPS

The college or university you have chosen may provide scholarships or financial awards from its own institutional funds. Often, institutional scholarships are given to recipients who meet specific eligibility requirements related to particular areas of study, academic achievements, outstanding talent, leadership, athletic ability or other criteria. Contact the financial aid office at the college or university you have selected and inquire about institutional scholarships.

PRIVATE SCHOLARSHIPS

Scholarships are available from a variety of sources including businesses, foundations, religious organizations, community groups or fraternal organizations. High school counselors are excellent resources for scholarship information, as are libraries and college and university financial aid administrators.

Internet searches also allow students and families the opportunity to explore a broader pool of scholarship possibilities. Reputable education organizations will NOT charge fees for the scholarship searches they offer. Be wary of questionable claims and avoid fee-for-service offers. Links to reputable organizations that offer scholarship searches can be found by selecting Helpful Links in the Commission Central section of the Iowa College Aid website at www.IowaCollegeAid.gov.

WORK-STUDY AND PART-TIME EMPLOYMENT

You may decide to pay for some of your college expenses by taking a part-time job. The extra income may mean having to borrow less in student loans. Part-time jobs can include work-study and jobs on and off campus. Work-study provides part-time jobs for undergraduate and graduate students with financial need. If you are eligible for work-study, your college or university will include it as an option for you to consider in your financial aid award letter. Students who work on campus usually work for their school. The employer for students who work off campus will usually be a private nonprofit organization or a public agency. Students not eligible for work-study can still opt to work in a part-time job to assist with their college expenses. When seeking a part-time job, keep in mind the following:

- While working part time teaches financial responsibility and self-discipline, it's important that it doesn't conflict with your primary objective – completing your college education.
- Do not work so many hours that you jeopardize the amount of time you have to study or attend class. In particular, working late-night hours may result in over-sleeping or missing classes. Typically, part-time employment will not affect grades if you work 20 hours or less each week.



STUDENT LOAN DETAILS

If you still need money to cover educational expenses after you have exhausted other aid and employment opportunities, student loans are a good option. Just remember, student loan money is for financing your education, not your lifestyle. Student loans are real money that must be repaid, with interest, so borrow only what you need.



Learn about responsible loan repayment and the long-term consequences of debt before accepting a student loan at Iowa College Aid's borrower website: www.itspaybacktime.org

Talk to your parents, banker or college financial aid officer to find out how much you will be expected to repay each month once you graduate or leave college. Factor that figure into a budget that will include payments for other expenses like a car, housing, food, etc.



every month
\$289

The average borrower, after graduating from a four-year Iowa college or university, has accumulated \$26,000 in student debt. At that level and with an interest rate of 6.0%, the individual will need to repay a minimum of \$289 every month for 10 years.

STAFFORD LOAN SUMMARY

STAFFORD LOANS

Stafford Loans are federal loans that are administered by the U.S. Department of Education. The financial aid office at your college or university has processes in place to make it efficient for you to complete a student loan application and receive funds that are applied directly to your student account. You must file a FAFSA to receive a Stafford Loan.

At many Iowa colleges and universities, the Stafford and PLUS Loans are disbursed through the Federal Family Education Loan Program (FFELP). Other colleges use the federal government's Direct Loan Program (DLP). Although the funds move through the system in different ways, Stafford and PLUS Loans for both programs have identical eligibility requirements and loan limits.

There are two types of Stafford Loans:

Subsidized Loan – For students who demonstrate financial need (as determined through the FAFSA process). Students do not pay interest on the loan while in school or in grace or deferment periods.

Unsubsidized Loan – Students do not have to demonstrate financial need to qualify. Students will be responsible for paying interest charged throughout the entire life of their loan, even while in school. Interest may be added to the loan (capitalized) to avoid payments while in school.

How to Choose and Evaluate Lenders: If your college or university participates in the Direct Loan Program, the federal government—through the U.S. Department of Education—will be your lender. If your college or university participates in the FFELP, you will need to select a lender. You can choose any participating lender you wish.

CRITERIA FOR EVALUATING A LENDER:

Experience/Reputation
Financial Stability
Competitive Benefits Offered:
Interest Rate Reductions
Other Benefits
How Benefits are Lost

Percent of Borrowers Who
Maintain Benefit Eligibility
Electronic Loan Processing
Convenient Account Access
Online Loan Payment and Other
Electronic Services

Interest Rate: Stafford loans first disbursed on or after July 1, 2006, have fixed interest rates. The rates differ based on when the loan is first disbursed, whether the loan is for an undergraduate or graduate student and whether the Stafford loan is subsidized or unsubsidized. **The chart below outlines the fixed interest rates. The corresponding rate is effective for the entire life of each loan.** If you have loans prior to July 1, 2006, your interest rate is variable and adjusts every July 1. Please refer to the interest rate chart located in the "Forms and Applications" section of Iowa College Aid's website at www.iowaCollegeAid.gov for current variable interest rate info.

Federal Stafford Loan Interest Rates

Loans first disbursed:	Undergraduate Subsidized Stafford	Undergraduate Unsubsidized Stafford	Graduate/Professional Sub and Unsub Stafford
On or after July 1, 2006	6.8% fixed	6.8% fixed	6.8% fixed
On or after July 1, 2008	6.0% fixed	6.8% fixed	6.8% fixed
On or after July 1, 2009	5.6% fixed	6.8% fixed	6.8% fixed
On or after July 1, 2010	4.5% fixed	6.8% fixed	6.8% fixed
On or after July 1, 2011	3.4% fixed	6.8% fixed	6.8% fixed
On or after July 1, 2012	6.8% fixed	6.8% fixed	6.8% fixed

Fees: Stafford loan fees differ depending on when the loan is first disbursed and whether the loan is disbursed through the FFEL Program or DL Program. For Stafford loans disbursed on or after July 1, 2009 through the FFEL Program, the Origination Fee is .5% and the Federal Default Fee is 1%. Iowa College Aid will pay the 1% Federal Default fee for the Stafford and PLUS loans it guarantees during the 2009-2010 award year.¹

For Stafford loans disbursed on or after July 1, 2009 through the DL Program, the Origination Fee is 1.5% and there is no Federal Default Fee.

Disbursement: Your lender or the federal government disburses the funds directly to the college or university you attend. Expect loan proceeds to be disbursed each academic period.

Repayment: Stafford Loan repayment begins six months after you graduate, withdraw, or drop below half-time enrollment. You have up to 10 years to repay federal student loans using a standard repayment plan. Extended repayment terms may be granted to borrowers with larger loan balances.

What is the Limit on What You Can Borrow? The chart on page 16 provides you with the annual loan limits which are set by the federal government and reflect the combined total of subsidized and unsubsidized Stafford Loans.

¹All loans guaranteed by Iowa College Aid from 7/1/09 to 6/30/10 will qualify for this benefit unless statutory, regulatory or other changes occur that adversely impact Iowa College Aid. This benefit will be reviewed on an annual basis.

(SUBSIDIZED & UNSUBSIDIZED)

FEDERAL STAFFORD LOAN AMOUNTS



Don't borrow more than you need! Refer to our website at www.iowaCollegeAid.gov to view various repayment options and estimate your monthly payment. You will find tools that show you how to pay less in interest while you repay your student loans and build a solid credit record.

Borrower's Academic Level	Annual Amount for a Dependent Student	Annual Amount for an Independent Student*
First year, undergraduate	\$5,500 [subsidized limit is \$3,500]	\$9,500 [subsidized limit is \$3,500]
Second year, undergraduate	\$6,500 [subsidized limit is \$4,500]	\$10,500 [subsidized limit is \$4,500]
Third year and beyond, undergraduate	\$7,500 [subsidized limit is \$5,500]	\$12,500 [subsidized limit is \$5,500]
Graduate/professional program student		\$20,500 [subsidized limit is \$8,500]
	Aggregate	Aggregate
Undergraduate	\$31,000 [subsidized limit is \$23,000]	\$57,500 [subsidized limit is \$23,000]
Graduate/professional program student		\$138,500 combined undergraduate & graduate loans [subsidized limit is \$65,500]

NOTE: Maximums include the \$2,000 Unsubsidized Stafford Loan increase for undergraduate students effective for loans first disbursed on or after July 1, 2008.

* You are considered an independent student (self-supporting) if you meet ONE of the following conditions: age 24 or older, a graduate or professional student, married, a student with legal dependents other than a spouse, veteran of the U.S. armed forces, orphan or ward of the court until age 18, or you are currently serving on active duty in the U.S. armed forces for other than training purposes.



Deferring interest payments may seem helpful now, but you will have a larger loan balance when you enter repayment (due to interest capitalization). You will save money in the end if you (or your parents) are able to pay the monthly interest charges on your unsubsidized loans while you are in school.

FEDERAL PLUS LOAN SUMMARY

Parent PLUS Loans are available to parents of dependent undergraduate students and Grad PLUS Loans are available to graduate/professional students to pay for educational expenses. Parent PLUS and Grad PLUS loans are federally insured and offer attractive deferment and forbearance options. Typically, they are used to pay unmet educational expenses. They may also be used as an alternative to private student loans.

Who May Borrow:

- Parents of dependent undergraduate students.
(Any natural or adoptive parent, or stepparent married to the student's custodial parent, may apply for a PLUS Loan.) The dependent student must be enrolled at least half time.
- Graduate/Professional students.

PLUS borrowers are subject to credit checks. Adverse credit may prohibit borrowing in these programs. If a Parent PLUS borrower is denied, the dependent undergraduate for whom the loan was applied for is eligible for additional Federal Unsubsidized Stafford Loan amounts.

Interest Rate: 8.5% Fixed*

Interest rates on Federal PLUS Loans disbursed on or after July 1, 2006, through the FFELP are fixed at 8.5%. If you have loans prior to July 1, 2006, your interest rate is variable and adjusted every July 1. Please refer to the interest rate chart located in the "Forms and Applications" section of the Iowa College Aid website at www.iowaCollegeAid.gov for current interest rate information.

*PLUS Loans first disbursed through the Federal Direct Loan Program on or after July 1, 2006, have fixed interest rates of 7.9%

Fees: Federal PLUS loan fees differ depending whether the loan is disbursed through the FFEL Program or DL Program. For Federal PLUS loans disbursed through the FFEL Program, the Origination Fee is 3% and the Federal Default Fee is 1%. Iowa College Aid will pay the 1% Federal Default fee for the Federal PLUS and Stafford loans it guarantees during the 2009-2010 award year.¹

For Federal PLUS loans disbursed through the DL Program, the Origination Fee is 4% and there is no Federal Default Fee.

Disbursement: Apply six to eight weeks before you need the money and if possible use the same lender every year to simplify repayment. Your lender disburses loan proceeds directly to the college or university. Expect your loan to be disbursed each academic term.

Repayment: Repayment begins 60 days after the loan funds are fully disbursed. Parent PLUS borrowers whose loan was first disbursed on or after July 1, 2008 may request postponement of repayment while the student for whom the loan was borrowed is enrolled at least half time and for six months thereafter. In-school deferment is also available to postpone payment for Grad PLUS borrowers who are enrolled at least half time and for six months thereafter. Borrowers for both the Parent PLUS loan and Grad PLUS loan have up to 10 years to repay the loan, with a minimum annual payment total amount of \$600 (\$50 per month).

Loan Limits: There is no annual or aggregate limit. A borrower may request an amount equal to the cost of education, minus any financial aid the student receives.

Did you know? Many parents use Parent PLUS Loans instead of private loans to pay unmet educational expenses. Students whose parents take responsibility for financing a portion of their college education are better prepared for loan repayment upon graduation. Many experts recommend that student loan payments not exceed 8% of income. Students who borrow \$26,000, the average student loan debt for students graduating from a four-year Iowa college or university, would need to earn at least \$43,350 to stay within this recommendation. Parents can help their students from being overwhelmed by too much debt by borrowing Federal Parent PLUS Loans.

¹All loans guaranteed by Iowa College Aid from 7/1/09 to 6/30/10 will qualify for this benefit unless statutory, regulatory or other changes occur that adversely impact Iowa College Aid. This benefit will be reviewed on an annual basis.

OTHER TYPES OF STUDENT LOANS

PERKINS LOANS

A Perkins Loan is based on financial need and is awarded and borrowed directly from your college or university. It is offered at a fixed interest rate of 5%, and no interest accrues until repayment. Limited federal funding is available for Perkins Loans. Repayment begins nine months after you graduate, leave school or drop below half-time enrollment.

PRIVATE LOANS

Private loans are available when additional funding is needed to bridge the gap between the cost of education and other sources of financial aid. Students should only use private loans as a last resort after all other loan options are exhausted and if their parents do not utilize the Parent PLUS Loan. Students should discuss the Federal Parent PLUS Loan with their parents before making the decision to borrow a private loan. PLUS Loans are generally less expensive and reduce the amount of debt carried by the student at the time of graduation.

Private loans are not federally insured and will be more costly than Federal Stafford Loans. Lenders that make private loans are often more selective about who may receive loans, and in most cases require students to pass a credit check and have a co-signer. There are many types of private loans, all with unique fees and interest rates. If you need to borrow a private loan or have questions about them, contact your financial aid office.



LOAN FORGIVENESS & CANCELLATION

IOWA TEACHER SHORTAGE LOAN FORGIVENESS

The State of Iowa offers federal student loan cancellation benefits to Iowa teachers who teach in specific shortage areas as designated by the Iowa Department of Education. Eligible applicants must be fully licensed teachers who began their first teaching jobs in Iowa no earlier than July 1, 2007. The maximum annual award is 20% of the teacher's total Federal Stafford Loan balance, including principal and interest, not to exceed the average resident tuition rate established for students attending universities governed by the Iowa Board of Regents for the first year following the recipient's graduation. For 2009 graduates, the maximum award amount is \$6,704.

Recipients may receive forgiveness for no more than five consecutive years. For more information on Iowa Teacher Shortage Loan Forgiveness, and to view the current Iowa shortage areas, visit our website at www.iowaCollegeAid.gov.

How to apply: Applications must be completed and submitted annually. Go to www.IHaveaPlanIowa.gov to apply online. The administrator of the school where the applicant performed the qualified teaching service must certify the applicant's employment.

IOWA STUDENT LOAN TEACHER EDUCATION LOAN FORGIVENESS PROGRAM

The Iowa Student Loan Teacher Education Loan Forgiveness Program was designed to supplement existing loan forgiveness programs offered to teachers by state and federal agencies. Students who are currently working toward education degrees or endorsement programs that lead to licensure in an approved subject shortage area at accredited Iowa colleges or universities may qualify. Shortage area employment in Iowa is required. To be eligible, your qualifying student loans must be held by Iowa Student Loan at the time loan forgiveness is requested. Go to www.studentloan.org/teacher for more details.

FEDERAL STUDENT LOAN CANCELLATION FOR TEACHERS

Federal cancellation benefits also exist for teachers who serve in high-need areas throughout the country. The federal government's program may cancel qualified student loans up to \$5,000 for borrowers who teach for five consecutive years in low-income schools. Additional benefits of up to \$17,500 in loan forgiveness may be available to borrowers who teach grades 7-12 science or mathematics, or grades K-12 special education subject areas. You are required to make regular loan payments while completing a five-year service obligation, unless your outstanding balance will be less than the amount for which you qualify. The lender can not refund loan payments you make before completion of your fifth year of teaching service. Before requesting an application, check with the lender holding your federal student loans to determine if you have a qualifying loan.



View shortage designations and more program information in the "Loan Forgiveness" section of the Iowa College Aid website at www.iowaCollegeAid.gov or call Iowa College Aid's Information Service Center at 877-272-4456.



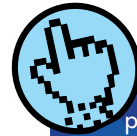
IOWA REGISTERED NURSE & NURSE EDUCATOR LOAN FORGIVENESS

This program is a state-supported federal student loan forgiveness program established for registered nurses employed in Iowa and for nurse educators teaching at eligible Iowa colleges and universities. Eligible applicants must be first employed as nurse educators or registered nurses in Iowa no earlier than July 1, 2007. The maximum annual award is 20% of the nurse educator's or registered nurse's total Federal Stafford Loan balance, including principal and interest, not to exceed the average resident tuition rate established for students attending universities governed by the Iowa Board of Regents for the first year following the recipient's graduation. For 2009 graduates, the maximum award is \$6,704.

Recipients may receive forgiveness for no more than five consecutive years. For more information on Iowa Registered Nurse and Nurse Educator Loan Forgiveness, visit the "Loan Forgiveness" section of www.iowaCollegeAid.gov. **How to apply:** Applications must be completed and submitted annually. Go to www.IHaveaPlanIowa.gov to apply online.

IOWA STUDENT LOAN NURSING EDUCATION LOAN FORGIVENESS PROGRAM

The Iowa Student Loan Nursing Education Loan Forgiveness Program was created to provide recruitment and retention incentives in the form of student loan forgiveness for nursing educators and registered nurses (RNs) in Iowa communities. Students who are currently enrolled in RN programs or post-baccalaureate nurse educator programs at accredited Iowa colleges or universities may qualify. Shortage area employment in Iowa is required. To be eligible, your qualifying loans must be held by Iowa Student Loan at the time loan forgiveness is requested. Go to www.studentloan.org/nursing for more details.



The Nursing Education Loan Repayment Program (NELRP) is a federal program that provides registered nurse recipients with loan forgiveness of up to 60% of their qualifying loan balance in exchange for two consecutive years of service at a critical shortage facility. Go to the "Loan Forgiveness" section of www.iowaCollegeAid.gov for more information, deadlines and to apply online.

CAREER PLANNING

What Kind of Career are you Seeking?

Do you want a job that will allow you to earn a lot of money? Are you looking for a career that allows you to show off your skills and knowledge? Or are you seeking employment that is fun and exciting and isn't considered work? Your best bet is to find something that has components of all three. A satisfying career will allow you to experience challenges using your skills in a way that is fun and exciting while earning enough money to live a comfortable lifestyle.

Find your perfect career by doing some soul searching. What activities do you enjoy? Where do you like to spend your time? Who do you enjoy having around? By defining the activities, places and people that make you happy, you will develop an idea for the type of work environment that best suits you.

Your experiences are tools that will be handy when seeking an ideal career. Make a list of the things you have done, such as hobbies, favorite school subjects and talents. It is also helpful to note which experiences you really enjoyed. Don't limit yourself based on your level of success or ability. There are a variety of skill levels required in all career fields.

Selecting a college or university to attend and deciding on a major are important decisions. These decisions are easier to make if you have a career plan in mind. Career development programs, like Iowa's career planning system, can help you discover how your interests and activities can be applied to the various careers available.

You need a plan to succeed.
Start your plan now!
www.IHaveaPlanIowa.gov

I HAVE A PLAN IOWA

IHaveaPlanIowa is a free, web-based tool to help you plan for high school, college and your career. Because it is web-based, all information accessed on IHaveaPlanIowa can be saved to an online portfolio. Create your online portfolio at www.IHaveaPlanIowa.gov to do the following:

- Learn about yourself.
- Match your interests, values and skills to a career.
- Find education and training programs.
- Prepare for the ACT and SAT.
- Explore Iowa's colleges and universities.
- Research financial aid options.
- Search for Scholarships.
- Apply for State of Iowa scholarships and grants.
- Track your activities online.

Once you have an idea of a career path, we encourage you to explore the Iowa colleges and universities that offer the programs that will help you achieve your goal. The chart on pages 25 and 26 of this guide list common majors offered by Iowa colleges and universities.



i have a plan
IOWA



SELECTING A MAJOR

Serious thought and consideration should be taken when selecting a major. Not only will this decision shape your college experience, it will also shape your life in general. If you are not sure what to major in, you are not alone. Many college students change their major at least once during their time at college. You will be more likely to select a major that is the right fit if your decision is based on the planning you have already started for your future career and the experiences you have had up to this point.



Pages 25 and 26 of this guide include a chart of common majors offered by Iowa colleges and universities.



Your Interests

The steps you have taken to find a career will help you find the major that is right for you. I Have A Plan Iowa is a great resource for finding majors relating to your interests. It also will help you find the colleges offering the majors you find interesting. Remember, you can set up your free portfolio by going to www.IHaveAPlanIowa.gov. You also can look through catalogs of colleges and universities you are considering to see if majors are offered relating to your interest areas. This may help you make your final decision as to what college you will attend.

Explore the Subject

Start exploring by taking classes related to your interests. This is a good way to familiarize yourself with a specific major and determine if you have enough of an interest to pursue a related career. Do not be discouraged if you find you are not as interested in a topic as you thought. Selecting the right major is a learning experience and may be determined through trial and error.

How Your Major Becomes a Degree

If you are still interested in the major after taking a class or two, do your homework to determine what the degree requirements will entail. The major's department is an excellent resource. You can obtain information about internships, careers and graduation requirements, and speak to an advisor or counselor about your plans. A visit to the department may even result in scholarship opportunities. Research things you will need to know such as what classes will be required for this major, what sorts of things will be covered in these classes and what will be expected of you.



Access www.IHaveAPlanIowa.gov and complete the Interest Profiler, Basic Skills Survey and Work Values Sorter to help you focus on majors and careers that are based on your individual interests, values and academic achievement.

TYPES OF DEGREES

The type of degree you attain can affect your future career options. Some degrees take more time to complete than others. Completing higher level degrees may provide you with a higher earning potential. See the descriptions and examples below to help you decide which degree is right for you.

Certificates and Diplomas

A certificate or diploma can generally be earned in two years or less at a community college, career/technical/business college or some four-year colleges. These programs tend to focus on a particular skill and train you for a specific career. Examples of possible careers requiring a certificate or diploma include paralegal, cosmetologist, welder, chef, certified nursing assistant and radiological technician.

Associate Degree

Associate degrees can usually be earned in two years (sometimes less) at any community college or some career/technical/business colleges and four-year colleges. You may enter a technical or vocational program and earn an associate degree. Sometimes you can apply a two-year degree toward a bachelor's degree at a four-year college or university. Examples of possible careers requiring an associate degree include dental hygienist, administrative assistant, registered nurse, veterinary technician and auto mechanic.

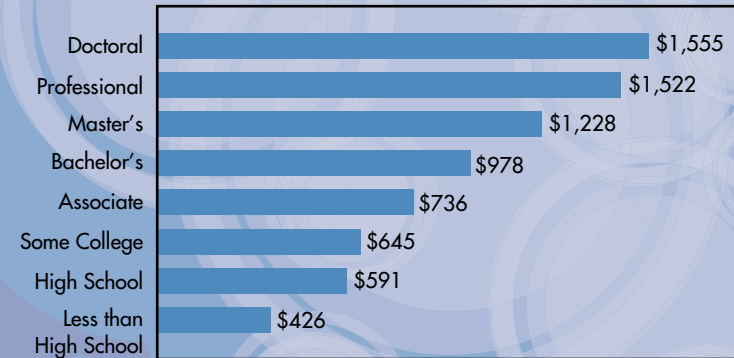
Bachelor's Degree

A bachelor's degree, or undergraduate degree, typically takes at least four years to complete at any four-year college or university. Careers that require a bachelor's degree include teacher, engineer, accountant, dietitian and social worker. You can also accomplish a four-year degree by completing a two-year program and transferring to a college that offers the four-year degree you are seeking. Be sure to check with the college or university that you plan to attend to ensure your credits will transfer to the four-year program.

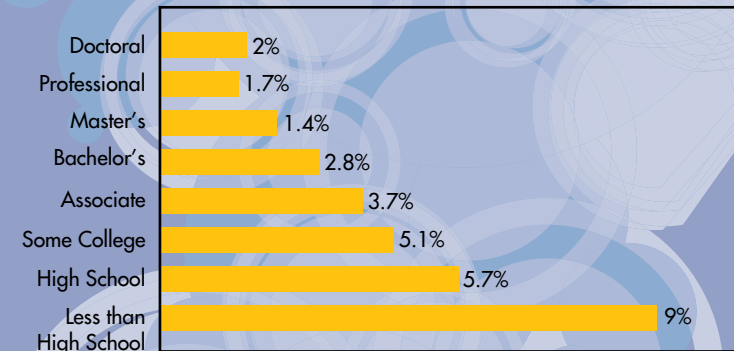
Advanced Degree

After obtaining a bachelor's degree, you may choose to pursue an advanced degree such as a master's, doctoral or professional degree. In many cases, an advanced degree can increase your earning potential and job opportunities within a particular profession. The time it takes to complete an advanced degree can be two years or more, based on the type of degree you choose. Examples of professions that require an advanced degree include dentist, lawyer, veterinarian, pharmacist, psychologist, college professor and doctor.

Higher education pays in higher earnings and lower unemployment rates. Overall, the more education you attain, the more likely you will find employment opportunities with higher earning potential.



Median Weekly Earnings in 2008 (Dollars)



Unemployment Rate in 2008 (Percent)

Source: Bureau of Labor Statistics, Current Population Survey. Data are 2008 annual averages for persons age 25 and over. Earnings are for full-time wage and salary workers.



Find program descriptions, degrees required and colleges that offer each program at IHaveAPlanIowa.gov. Complete the Career Cluster survey to match your interests and personal qualities to different careers.

TRANSFER STUDENTS

Sometimes your first college choice isn't the right fit and you might think about transferring to a different college. Many students transfer every year for a variety of reasons, so you can rest assured you are not alone. The trick to a successful transfer is to begin planning as soon as possible. Here are some transfer tips to help you make a smooth transition:

Keep Your Grades Up. Even if you aren't planning to finish a degree at your current college, you should still continue to go to class and turn in assignments. The college or university you transfer to will want to see your most recent transcripts and they may have a grade requirement for all college level courses attempted. Even if you received good grades in high school or were previously admitted to your new college, low grades could ruin your plans to transfer.

Selecting a New College. You will need to decide where to transfer. Be sure to determine what factors contributed to your decision to leave your current college. Take these factors into consideration when selecting a new college. Learn more about Iowa's colleges in the Directory of Colleges and Universities located in the back of this guide or by visiting Iowa College Aid's website, www.iowaCollegeAid.gov.

Go On a Campus Visit. The experiences you have had on your current college campus may help you identify the benefits you want and need from a college experience.

Talk to Advisors. It is a good idea to work with advisors on both your old and new campuses to be sure everything is lined up. Ask the advisors if your classes will transfer. Advisors can help you with questions about articulation agreements, admission partnership programs and cross-enrollment options.


Check into the student services organizations and campus activities that will be available on your new campus. Not every campus offers the same activities or services.

Apply for Admission. You should check out the college's admission requirements, even if you were previously accepted. If you want to transfer course credits from your prior college you will need to send your most recent transcript to the new college. Some colleges will want a copy of your prior college course work regardless of whether you transfer any credits or not. Be sure to ask your admissions officer about placement exams, registering for classes and signing up for orientation.

Secure Your Housing. Whether you are living on campus or in an apartment, you will need to get the process rolling as soon as possible so that you have a place to live when your classes begin.

Apply for Financial Aid. Unfortunately you can not just transfer your current financial aid to your new college. You will need to add your new college to your Free Application for Federal Student Aid (FAFSA) in order to receive a new financial aid package. You also should notify your current financial aid office of your plans to transfer. Some types of financial aid can not be awarded by the new college until the old college has canceled your aid.

In addition, you should contact current scholarship donors to see if your scholarship can be transferred to your new college as well as seek new scholarship opportunities. If you plan to borrow to pay your expenses, when you transfer to the new college you may need to complete new loan applications. Contact your new college to find out their process and if they need your financial aid transcript from your current college.



The most successful transfers occur when students prepare in advance. Check the transferability of courses before you take them. Focus on core classes like English composition and mathematics before transferring to save you both time and money.

SERVICES FOR STUDENTS WITH DISABILITIES

Many students with disabilities graduate from high school and successfully continue their education at career and technical colleges as well as two-year and four-year colleges and universities. If you are a student with a disability, knowing your rights and responsibilities as well as the responsibilities that colleges and universities have towards you will help when requesting the support you need to learn and work successfully.



Follow these steps to make the transition to college easier:

1. Know your diagnosis, if you have one, and be comfortable talking about your disability.
2. Attend and participate in your annual Individualized Education Program (IEP) meetings. Know your annual goals.
3. Take college tours early. Interview the college for 'fit' by preparing a list of questions to ask ahead of time.
4. Identify and schedule an appointment with the person or the office responsible at the college for providing services to students with disabilities to discuss your potential need for services and support.
5. Bring documentation (written information) that describes how your disability impacts your learning, living, and working. Examples of documentation include the SAR* (Support for Accommodation Request) form, the most recent copy of your 504 plan, a statement from a treating physician, a psychological evaluation, and/or paperwork from Iowa Vocational Rehabilitation Service (IVRS).
6. Complete your application** early.
7. Meet with a campus advisor to help you set up a realistic course schedule.
8. If needed, enroll in preparatory courses in subjects where you have skill deficits before you begin your degree requirements.
9. Take responsibility for your learning. Increase your independence by discussing your progress with your professors and keeping track of assignments, due dates, and appointments.

*More information on services for students with disabilities, including an electronic SAR (Support for Accommodation Request) form with instructions for completion and contacts at Area Education Agencies (AEA) and Iowa colleges and universities are available on the Iowa College Aid Website at www.iowaCollegeAid.gov.

**Your acceptance at the college or university of your choice is not influenced by a disability.

Data Source:

Coon, H. (2009), Making Transition to College Easier: Student Information. In Des Moines Area Community College Disability Services Office.

This list is intended to provide you with information only. It is not intended to be comprehensive. The data was reported to Iowa College Aid by Iowa college and university officials through the Federal IPEDS annual survey. The programs shown are those in which students completed degrees in 2004-2008. Many colleges or universities offer related programs that may not be shown here. Please contact the colleges and universities directly for program-specific information. More information on majors and programs for each of the categories below can be found at Iowa College Aid's website at www.iowaCollegeAid.gov.

COMMON MAJORS OFFER

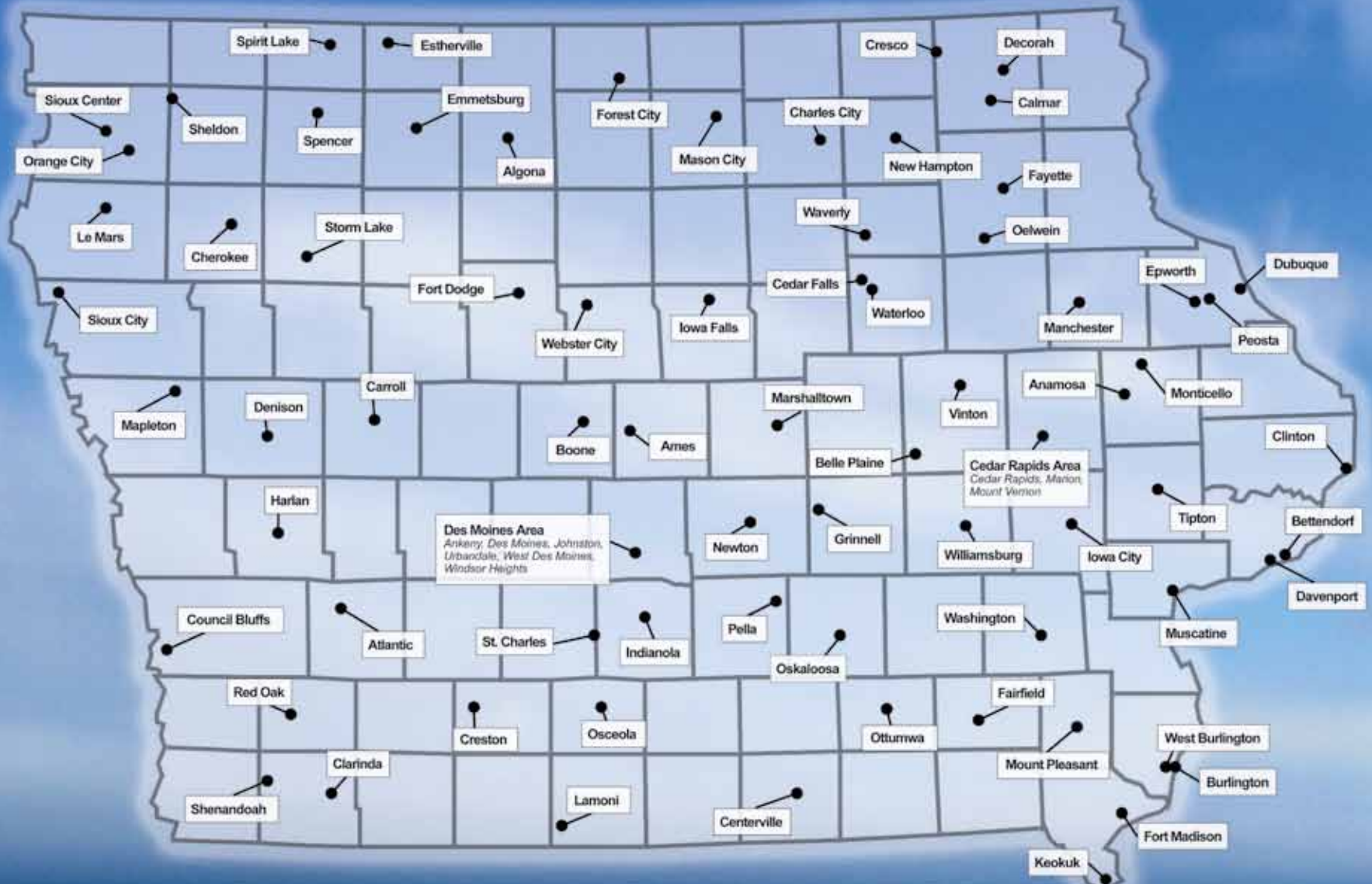
	Alb	Allen College	Ashtford University	Briar Cliff University	Buena Vista University	Central College	Clarke College	Coe College	Cornell College	Des Moines College	Des Moines Comm. College	Divine Word College	Dordt College	Drake University	Eastern Iowa College	Emmaus College	Faith Baptist College	Graceland College	Grand View University	Grinnell College	Hawkeye College	Indian Hills Comm. College	Iowa Central College
Agriculture, Operations and Sciences									X			X		X				X		X	X	X	X
Architecture and Related Programs								X	X														
Area, Ethnic and Cultural Studies								X	X														
Biological and Biomedical Sciences			X	X	X	X	X	X	X			X	X	X			X	X	X				
Business, Management, Marketing	X		X	X	X	X	X	X	X			X	X	X		X	X	X		X	X	X	X
Communications Technologies & Support									X					X				X		X		X	
Communications & Journalism				X	X	X	X	X				X	X				X	X					X
Computer and Information Sciences	X		X	X	X	X	X	X	X			X	X	X	X		X	X	X	X	X	X	X
Construction Trades									X					X							X	X	X
Education			X	X	X	X	X	X				X	X		X	X	X	X					
Engineering									X			X									X		X
Engineering Technologies/ Technicians									X					X						X	X	X	X
English Language and Literature/Letters			X	X	X	X	X	X				X	X	X			X	X	X				
Family, Consumer Sciences/Human Sciences					X	X	X	X	X			X		X			X	X	X		X		X
Foreign Languages and Literatures					X	X	X	X				X		X			X	X		X	X		
Health Professions and Clinical Sciences		X	X	X	X	X	X		X	X		X	X	X			X	X		X	X	X	X
History General				X	X	X	X	X				X	X	X			X	X	X				
Legal Professions and Studies	X								X				X					X					X
Liberal Arts and Sciences/General Studies			X	X		X	X		X	X		X	X	X			X	X		X	X	X	X
Library Science																							
Mathematics and Statistics			X	X	X	X	X	X				X	X	X			X	X	X				
Mechanic and Repair Technologies									X					X					X	X	X	X	X
MultiInterdisciplinary Studies			X	X	X		X	X					X	X			X		X	X		X	
Natural Resources and Conservations			X	X	X	X	X	X				X	X	X					X				X
Parks, Recreation, Leisure and Fitness			X	X	X	X	X	X	X			X		X			X	X					X
Personal and Culinary Services									X					X						X			
Philosophy and Religious Studies				X	X	X	X	X			X	X	X		X	X		X					
Physical Sciences			X	X	X	X	X	X				X	X	X			X		X				
Precision Production									X					X						X	X	X	X
Psychology			X	X	X	X	X	X				X	X	X			X	X	X				
Public Administration and Social Services				X	X		X		X			X	X	X			X	X				X	
Science Technologies/ Technicians																					X	X	
Security and Protective Services			X	X	X				X			X					X	X		X	X	X	X
Social Sciences			X	X	X	X	X	X			X	X	X	X			X	X	X	X			
Theology and Religious Vocations				X								X		X	X								
Transportation and Materials Moving														X					X	X	X	X	X
Visual and Performing Arts			X	X	X	X	X	X	X			X	X	X		X	X	X	X	X			X

	Adams College	Dakota Lakes Comm. College	Iowa State University	Iowa Valley Comm. College	Iowa Wesleyan College	Kaplan University	Kirkwood Comm. College	Loras College	Luther College	Maharishi University	Mercy College	Morningside College	Mount Mercy College	North Iowa College	NE Iowa Area Comm. College	NW Iowa Comm. College	Northwestern College	Palmer College	Simpson College	Southeastern College	Southwestern Comm. College	St. Ambrose University	University of Dubuque	University of Iowa	Upper Iowa University	Waldorf College	Warburg College	Western Iowa Tech Comm. College	William Penn University
X	X		X		X								X	X		X			X	X							X		
X							X	X														X							
X	X	X					X	X	X		X	X				X		X			X	X	X	X		X	X	X	
X	X	X	X	X	X	X	X	X			X	X	X	X	X	X	X	X	X	X	X	X	X	X	X	X	X	X	
X	X		X		X	X	X	X					X	X	X				X	X			X	X	X	X	X	X	
X	X	X		X		X	X	X		X	X				X		X			X	X	X	X	X	X	X	X	X	
X	X		X		X	X	X				X		X	X	X				X	X		X	X	X	X	X	X	X	
X	X	X		X		X	X				X		X	X	X				X	X		X	X	X	X	X	X	X	
X	X		X		X		X				X		X	X	X				X	X		X	X	X	X	X	X	X	
X	X	X		X		X	X	X			X	X		X	X	X	X	X	X	X	X	X	X	X	X	X	X	X	
X	X	X		X	X	X	X	X		X	X		X	X	X	X	X	X	X	X	X	X	X	X	X	X	X	X	
X	X		X		X	X		X					X	X	X	X			X	X		X	X	X	X	X	X	X	
X	X	X				X	X	X		X	X			X	X	X		X			X		X	X	X	X	X	X	
X	X	X		X		X	X				X		X	X	X	X	X	X	X	X	X	X	X	X	X	X	X	X	
X	X	X		X		X	X				X		X	X	X	X	X	X	X	X	X	X	X	X	X	X	X	X	
X	X	X		X		X	X				X		X	X	X	X	X	X	X	X	X	X	X	X	X	X	X	X	
X	X	X		X		X	X				X		X	X	X	X	X	X	X	X	X	X	X	X	X	X	X	X	
X	X	X		X		X	X				X		X	X	X	X	X	X	X	X	X	X	X	X	X	X	X	X	
X	X	X		X		X	X				X		X	X	X	X	X	X	X	X	X	X	X	X	X	X	X	X	
X	X	X		X		X	X				X		X	X	X	X	X	X	X	X	X	X	X	X	X	X	X	X	
X	X	X		X		X	X				X		X	X	X	X	X	X	X	X	X	X	X	X	X	X	X	X	
X	X	X		X		X	X				X		X	X	X	X	X	X	X	X	X	X	X	X	X	X	X	X	
X	X	X		X		X	X				X		X	X	X	X	X	X	X	X	X	X	X	X	X	X	X	X	
X	X	X		X		X	X				X		X	X	X	X	X	X	X	X	X	X	X	X	X	X	X	X	
X	X	X		X		X	X				X		X	X	X	X	X	X	X	X	X	X	X	X	X	X	X	X	
X	X	X		X		X	X				X		X	X	X	X	X	X	X	X	X	X	X	X	X	X	X	X	
X	X	X		X		X	X				X		X	X	X	X	X	X	X	X	X	X	X	X	X	X	X	X	
X	X	X		X																									

IOWA



POSTSECONDARY INSTITUTIONS



Algona

- ❏ Iowa Lakes Community College - 001864

Ames

- ▲ Iowa State University of Science and Technology - 001869
- ✦ Professional Cosmetology Institute - 015245
- ❏ William Penn University - College for Working Adults - 001900

Anamosa

- ✦ Carlson College of Massage Therapy

Ankeny

See Des Moines Area

Atlantic

- ❏ Iowa Western Community College - 004598

Belle Plaine

- ❏ Kirkwood Community College - 004076

Bettendorf

- ↔ Scott Community College (Eastern Iowa Community College District) - 004074

Boone

- ❏ Des Moines Area Community College - 004589

Burlington

- ✦ Dayton's School of Hair Design - 016901

Calmar

- ↔ Northeast Iowa Community College - 004587

Carroll

- ❏ Des Moines Area Community College - 004589

Cedar Falls

- ✦ American Institute of Commerce
- 🏠 Hamilton College - E00920
- ❏ Hawkeye Community College - 004595
- ✦ La' James International College - 013006
- ▲ University of Northern Iowa - 001890

Cedar Rapids Area

Cedar Rapids

- ✦ American College of Hairstyling
- ✦ Capri College - 014390
- III Coe College - 001854
- ❏ Hamilton College - 004220
- ↔ Kirkwood Community College - 004076
- ✦ Mercy/St. Luke's School of Radiologic Technology
- III Mount Mercy College - 001880
- ✦ St. Luke's Hospital Medical Technology Program
- ✦ St. Luke's Hospital - Clinical Laboratory Science Program

Marion

- ❏ Kirkwood Community College - 004076

Mount Vernon

- III Cornell College - 001856

Centerville

- ❏ Graceland University - 001866
- ❏ Indian Hills Community College - 001849

Charles City

- ❏ North Iowa Area Community College - 001877

Cherokee

- ❏ Western Iowa Tech Community College - 004590

Clarinda

- ❏ Iowa Western Community College - 004598

Clinton

- 🏠 Ashford University - 001881
- ↔ Clinton Community College (Eastern Iowa Community College District) - 001853

Council Bluffs

- ✦ Advanced Air Inc.
- ❏ Buena Vista University - 001847
- ✦ EQ School of Hair Design - 007611
- ❏ Hamilton College - E01153
- ↔ Iowa Western Community College - 004598
- ✦ Jennie Edmundson Hos. Sch. of Radiologic Tech.
- ✦ Key Real Estate School

Cresco

- ❏ Northeast Iowa Community College - 004587

Creston

- ❏ Buena Vista University - 001847
- ✦ Hair Tech School of Technology
- ❏ Northwestern Community College - 001857

Davenport

- ✦ Capri College - 007717
- ✦ Carver Aero, Inc.
- ✦ Davenport Barber Styling College - 017304
- ↔ Scott Community College (Eastern Iowa Community College District) - 004074
- ✦ Hamilton Technical College
- ✦ Institute of Therapeutic Massage and Wellness
- 🏠 Kaplan University - 004586
- ✦ La' James College of Hairstyling - 021345
- III Palmer College of Chiropractic - 012300
- ❏ Quad Cities School of Real Estate
- III St. Ambrose University - 001889

Decorah

- III Luther College - 001874

Denison

- ❏ Buena Vista University - 001847
- ✦ Denison Job Corps Center
- ❏ Western Iowa Tech Community College - 004590

Des Moines Area

Ankeny

- ↔ Des Moines Area Community College - 004589
- III Faith Baptist Bible College and Theological Seminary - 007121
- ✦ Iowa College of Natural Health
- ❏ Simpson College - 001887
- ❏ Upper Iowa University - 001893

Des Moines

- III AIB College of Business - 003963
- ✦ American College of Hairstyling

Des Moines, continued

- ✦ College of Massage and the Healing Arts Center
- ❏ Des Moines Area Community College - 004589
- III Des Moines University - 015616
- III Drake University - 001860
- ❏ Graceland University - 001866
- ❏ Grand View College - 001867
- ✦ Institute for Social & Economic Development
- ✦ Iowa Massage Institute
- ✦ Iowa Methodist Medical Center School of Radiologic Technology - 006267
- ✦ Iowa School of Beauty - 015139
- III Kingsway Christian College and Theological Seminary
- III Mercy College of Health Sciences - 006273
- ✦ Mercy School of Clinical Laboratory Science and Technology
- ✦ Vatterott College - 026092

Johnston

- ✦ La' James International College - 022741

Urbandale

- ✦ Body Wisdom Massage Therapy School
- ❏ Hamilton College - E00925

West Des Moines

- ❏ Des Moines Area Community College - 004589
- ✦ Iowa Real Estate School
- ❏ Simpson College - 001887
- ❏ Upper Iowa University - 001893
- ❏ William Penn University - College for Working Adults - 001900

Windsor Heights

- ✦ H & R Block

Dubuque

- ✦ Capri College - 007588
- III Clarke College - 001852
- III Emmaus Bible College - 016487
- III Loras College - 001873
- ❏ Northeast Iowa Community College - 004587
- III University of Dubuque - 001891
- III Wartburg Theological Seminary - 001897

Emmetsburg

- ❏ Buena Vista University - 001847
- ↔ Iowa Lakes Community College - 001864

Epworth

- III Divine Word College - 001858

Estherville

- ❏ Buena Vista University - 001847
- ↔ Iowa Lakes Community College - 001864

Fairfield

- III Maharishi University of Management - 011113

Fayette

- III Upper Iowa University - 001893

Forest City

- III Waldorf College - 001895

Fort Dodge

- ❏ Buena Vista University - 001847
- ↔ Iowa Central Community College - 004597
- ✦ La' James International College - 008424
- ✦ Millennium College of Massage & Reflexology

Fort Madison

- ✦ Bill Hill's College of Cosmetology
- ❏ Southeastern Community College - 004603

Grinnell

- III Grinnell College - 001868

Harlan

- ❏ Iowa Western Community College - 004598

Indianola

- III Simpson College - 001887

Iowa City

- ✦ Eastwind School of Holistic Healing
- ✦ H & R Block Tax Training School
- ❏ Kirkwood Community College - 004076
- ✦ La' James International College - 009593
- ▲ University of Iowa - 001892

Iowa Falls

- ❏ Buena Vista University - 001847
- ↔ Iowa Valley Community College - Ellsworth - 001862

Johnston

- See Des Moines Area

Keokuk

- ✦ Dayton's School of Hair Design - 016806
- ❏ Southeastern Community College - 004603

Lamoni

- III Graceland University - 001866

Le Mars

- ❏ Buena Vista University - 001847
- ✦ Le Mars Beauty College
- ❏ Western Iowa Tech Community College - 004590

Manchester

- ❏ Northeast Iowa Community College - 004587

Mapleton

- ❏ Western Iowa Tech Community College - 004590

Marshalltown

- ❏ Buena Vista University - 001847
- ✦ Iowa School of Beauty - 016519
- ↔ Iowa Valley Community College - 001875

Marion

- See Cedar Rapids Area

Mason City

- ❏ Buena Vista University - 001847
- ❏ Hamilton College - E00926
- ✦ La' James College of Hairstyling - 007659
- ✦ Mercy Medical Center - North Iowa School of Radiologic Technology

Mason City, continued

- ↔ North Iowa Area Community College - 001877
- ✦ World Wide College of Auctioneering, Inc.

Monticello

- ❏ Kirkwood Community College - 004076

Mount Pleasant

- III Iowa Wesleyan College - 001871
- ❏ Southeastern Community College - 004603

Mount Vernon

- See Cedar Rapids Area

Muscatine

- ↔ Muscatine Community College (Eastern Iowa Community College District) - 001882

New Hampton

- ❏ Northeast Iowa Community College - 004587

Newton

- ❏ Buena Vista University - 001847
- ❏ Des Moines Area Community College - 004589

Oelwein

- ❏ Northeast Iowa Community College - 004587

Orange City

- III Northwestern Community College - 001883

Osceola

- ❏ Northwestern Community College - 001887

Oskaloosa

- III William Penn University - 001900

Ottumwa

- ❏ Buena Vista University - 001847
- ↔ Indian Hills Community College - 008298
- ✦ Iowa School of Beauty - 016306

Pella

- III Central College - 001850

Peosta

- ❏ Northeast Iowa Community College - 012634

Red Oak

- ❏ Buena Vista University - 001847
- ❏ Northwestern Community College - 001857

Sheldon

- ↔ Northwest Iowa Community College - 004600

Shenandoah

- ❏ Iowa Western Community College - 004598

Sioux Center

- III Dordt College - 001859

Sioux City

- ✦ Bio-Chi Institute
- III Briar Cliff University - 001846
- ✦ Iowa School of Beauty - 034413
- ✦ Mercy Medical Center School of Medical Technology
- III Morningside College - 001879
- ✦ Real Estate School of Siouxland
- III St. Luke's College - 007291

Sioux City, continued

- ✦ Tri-State Graduate Center
- ↔ Western Iowa Tech Community College - 004590

Spencer

- ❏ Buena Vista University - 001847
- ❏ Iowa Lakes Community College - 001864

Spirit Lake

- ❏ Buena Vista University - 001847
- ❏ Iowa Lakes Community College - 001864
- ✦ Northwest Iowa School of Taxidermy

St. Charles

- ✦ Hutton Valley School of Taxidermy

Storm Lake

- III Buena Vista University - 001847
- ✦ Faust Institute of Cosmetology - 015973
- ❏ Iowa Central Community College - 004597

Tipton

- ❏ Kirkwood Community College - 004076

Urbandale

- See Des Moines Area

Vinton

- ❏ Kirkwood Community College - 004076

Washington

- ❏ Kirkwood Community College - 004076

Waterloo

- III Allen College - 030691
- ✦ College of Hair Design - 007941
- ❏ Covenant School of Radiography
- ↔ Hawkeye Community College - 004595
- ✦ Livingston Aviation
- ❏ Upper Iowa University - 001893

Waverly

- III Wartburg College - 001896

Webster City

- ❏ Iowa Central Community College - 004597
- ✦ Storm Flying Service, Inc.

West Burlington

- ✦ Kindred Spirits School of Taxidermy
- ↔ Southeastern Community College - 004603

West Des Moines

- See Des Moines Area

Williamsburg

- ❏ Kirkwood Community College - 004076

Windsor Heights

- See Des Moines Area

*U.S. Office of Education federal school code numbers are provided following the institution's name for all postsecondary institutions eligible to grant Title IV aid to students. These numbers are used to identify postsecondary institutions on the Free Application for Federal Student Aid (FAFSA).

▲ State University III Nonprofit College or University ↔ Community College

🏠 Proprietary College or University ❏ Satellite Campus ✦ Trade or Technical School

Iowa has an outstanding higher education system that allows students to choose the institution that is right for them – including three Regent Universities, 29 independent colleges and universities, 18 community colleges, and several business colleges, colleges for nursing and health care professions, career/technical and vocational schools, and cosmetology and barber schools.

The following directory of Iowa colleges and universities includes costs for tuition, fees, and on-campus room and board. These figures were supplied by the higher-education institutions in the spring of 2009 and reflect the costs anticipated for the 2009-10 academic year. Visit each institution's website online through the Iowa College Aid's website at: www.IowaCollegeAid.gov.



Deciding which college or university to attend is extremely important. It's never too early to begin exploring your educational options.

DIRECTORY OF IOWA COLLEGES & UNIVERSITIES

AIB COLLEGE OF BUSINESS	33
ALLEN COLLEGE	61
ASHFORD UNIVERSITY	49
BEAUTY, BARBER AND MASSAGE THERAPY COLLEGES	64
BRIAR CLIFF UNIVERSITY	34
BUENA VISTA UNIVERSITY	34
CAREER/TECHNICAL COLLEGES	65
CENTRAL COLLEGE	35
CLARKE COLLEGE	35
CLINTON COMMUNITY COLLEGE	51
COE COLLEGE	36
CORNELL COLLEGE	36
DES MOINES AREA COMMUNITY COLLEGE	52
DES MOINES UNIVERSITY	62
DIVINE WORD COLLEGE	37
DORDT COLLEGE	37
DRAKE UNIVERSITY	38
ELLSWORTH COMMUNITY COLLEGE	52
EMMAUS BIBLE COLLEGE	38
FAITH BAPTIST BIBLE COLLEGE	39
GRACELAND UNIVERSITY	39
GRAND VIEW COLLEGE	40
GRINNELL COLLEGE	40
HAWKEYE COMMUNITY COLLEGE	53
INDIAN HILLS COMMUNITY COLLEGE	53
IOWA CENTRAL COMMUNITY COLLEGE	54
IOWA LAKES COMMUNITY COLLEGE	54
IOWA STATE UNIVERSITY	31
IOWA WESLEYAN COLLEGE	41
IOWA WESTERN COMMUNITY COLLEGE	55
KAPLAN UNIVERSITY	50

TABLE OF CONTENTS

Welcome to the Directory of Iowa Colleges and Universities. The following pages contain valuable information about various educational opportunities in Iowa. We hope this directory helps you choose the college or university that is right for you!

KIRKWOOD COMMUNITY COLLEGE	55
LORAS COLLEGE	41
LUTHER COLLEGE	42
MAHARISHI UNIVERSITY OF MANAGEMENT	42
MARSHALLTOWN COMMUNITY COLLEGE	56
MEDICAL TECHNOLOGY SCHOOLS	65
MERCY COLLEGE OF HEALTH SCIENCES	62
MORNINGSIDE COLLEGE	43
MOUNT MERCY COLLEGE	43
MUSCATINE COMMUNITY COLLEGE	56
NORTH IOWA AREA COMMUNITY COLLEGE	57
NORTHEAST IOWA COMMUNITY COLLEGE	57
NORTHWEST IOWA COMMUNITY COLLEGE	58
NORTHWESTERN COLLEGE	44
PALMER COLLEGE OF CHIROPRACTIC	63
SCOTT COMMUNITY COLLEGE	58
SIMPSON COLLEGE	44
SOUTHEASTERN COMMUNITY COLLEGE	59
SOUTHWESTERN COMMUNITY COLLEGE	59
ST. AMBROSE UNIVERSITY	45
ST. LUKE'S COLLEGE	63
THEOLOGICAL SEMINARIES	65
UNIVERSITY OF DUBUQUE	45
UNIVERSITY OF IOWA	32
UNIVERSITY OF NORTHERN IOWA	32
UPPER IOWA UNIVERSITY	46
WALDORF COLLEGE	46
WARTBURG COLLEGE	47
WESTERN IOWA TECH COMMUNITY COLLEGE	60
WILLIAM PENN UNIVERSITY	47

IOWA'S REGENT UNIVERSITIES

IOWA STATE UNIVERSITY

100 Enrollment Services Center - ISU • Ames, IA 50011-2010

Home Page: www.iastate.edu

County: Story

Setting: Urban

Accredited by: Higher Learning
Commission of the NCA

Calendar System: Semester

Enrollment: 21,607 undergraduate;
4,718 graduate;
531 Vet Med

Tuition & Fees: \$6,651

On-Campus Room & Board: \$7,277

Est. Books and Supplies: \$1,000

Admissions Director: Marc Harding

314 Enrollment Services Center
515-294-5836 or 800-262-3810

Financial Aid Director: Roberta Johnson

0210 Beardshear Hall
515-294-2223 or
financialaid@iastate.edu

FAFSA Code: 001869

County Population: 80,145

Control/Affiliation: Public University

Highest Offering or Degree: Doctorate

Types of Programs: Engineering,
Agriculture, Design, Human Sciences,
Veterinary Medicine, Natural & Physical
Sciences, Liberal Arts, Business, Education

Priority Deadline for Aid Filing: March 1

Minimum Admission Requirement:

A Regent Admission Index (RAI) score of at least 245, calculated based on the equation:
$$RAI = (2 \times \text{ACT composite score}) + (1 \times \text{percentile high school rank}) + (20 \times \text{high school grade point average}) + (5 \times \text{number of years of high school core courses completed})$$
; and Iowa State's minimum high school course requirements.



Iowa State University is one of the nation's leading land-grant universities serving the people of Iowa, the nation, and the world through its integrated programs of instruction, research, extension and professional service.

Iowa State provides undergraduate programs across a broad range of disciplines. In its dedication to excellence in teaching, Iowa State strives to instill in its students the knowledge and skills essential for their individual development and their useful contribution to society.

A common goal of Iowa State's undergraduate education is to assure that all students, regardless of disciplinary major, acquire literacy in science and technology; an understanding of the intellectual, historical and artistic foundation of our culture; and a sensitivity to other cultures and international concerns.

Iowa State is ranked as one of the nation's top 50 public universities.

THE UNIVERSITY OF IOWA

107 Calvin Hall • Iowa City, IA 52242

Home Page: www.uiowa.edu

County: Johnson

Setting: Urban

Accredited by: Higher Learning
Commission of the NCA

Calendar System: Semester

Enrollment:

20,823 undergraduate;

6,305 graduate;

2,024 professional

Tuition & Fees: \$6,824

On-Campus Room & Board: \$8,004

Est. Books and Supplies: \$1,090

Admissions Director: Michael Barron

107 Calvin Hall

319-335-3847 or 800-553-iowa

FAFSA Code: 001892

County Population: 111,006

Control/Affiliation: Public University

Highest Offering or Degree: Professional

Types of Programs: Liberal Arts & Sciences,
Engineering, Business, Nursing, Pharmacy,
Teacher Preparation, and Professional

Priority Deadline for Aid Filing: As soon
as possible after Jan. 1 for financial aid;
April 1 deadline for admissions applications

Minimum Admission Requirement:

See web site: www.uiowa.edu/admissions

Director of Student Financial Aid:

Mark Warner, 208 Calvin Hall

319-335-1450 or 800-553-iowa



With the smallest student body among the Big Ten public universities, The University of Iowa offers some unique advantages for students by combining the resources of a major research university with an outstanding tradition in undergraduate education. The environment is competitive but not tense; friendly and helpful, but with an expectation of independent inquiry on the part of faculty.

Because its educational programs are firmly grounded in the liberal arts, the University fosters an open attitude toward learning and prepares undergraduates to live in and understand a rapidly changing and diverse world.

UNIVERSITY OF NORTHERN IOWA

1227 West 27th Street • Cedar Falls, IA 50614

Home Page: www.uni.edu

County: Black Hawk

Setting: Urban

Accredited by: Higher Learning
Commission of the NCA

Calendar System: Semester

Enrollment: 12,609

Tuition & Fees: \$6,636

On-Campus Room & Board: \$7,082

Est. Books and Supplies: \$1,035

Admissions Director:

Christie Kangas

002 Gilchrist Hall

319-273-2281 or 800-772-2037

FAFSA Code: 001890

County Population: 126,106

Control/Affiliation: Public University

Highest Offering or Degree: Doctorate

Types of Programs: Education, Natural
Sciences, Social and Behavioral Sciences,
Business, Humanities and Fine Arts, Liberal
Arts, Pre-professional Preparation

Priority Deadline for Aid Filing: June 1

Minimum Admission Requirement:

See Web site at www.uni.edu/admissions

Director of Financial Aid:

Joyce Morrow

105 Gilchrist Hall

319-273-2700 or 800-772-2036

UNI prides itself on putting "Students First." The University of Northern Iowa offers a world-class university education, providing personalized experiences and creating a lifetime of opportunities. UNI's park-like campus attracts students from every county in Iowa, 46 states and 57 countries.

UNI is ranked among the top two in the Midwest for public comprehensive universities.



IOWA'S INDEPENDENT COLLEGES & UNIVERSITIES

AIB COLLEGE OF BUSINESS

2500 Fleur Drive • Des Moines, IA 50321

Home Page: www.aib.edu

County: Polk

Setting: Urban

Accredited by: Higher Learning
Commission of the NCA

Calendar System: 4 Terms/Year
(day, evening and online)

Enrollment: 985

Tuition & Fees: \$13,140- full-time,
day-school students

On-Campus Room & Board: \$4,527

Est. Books and Supplies: \$1,176

Director of Admissions:

Shirlee Krouch

515-244-4221 or 800-444-1921

Financial Aid Director: Laurie Sanders

515-244-4221 or 800-444-1921

FAFSA Code: 003963

County Population: 408,888

Control/Affiliation: Nonprofit Independent

Highest Offering or Degree: Associate of
Applied Science, Bachelor of Science

Types of Programs: Accounting, Business
Administration, Communications Design &
Mgmt., Financial Services, General Studies,
Information Technology, Office Administration,
Court Reporting and Closed Captioning,
Sales & Marketing, Sports and Event Mgmt.,
Transcription Services, Travel & Hospitality
Mgmt. and Voice Captioning

Priority Deadline for Aid Filing: April 1

Minimum Admission Requirement:

Institutional Placement Tests

2.0 GPA



Over the past 86 years, AIB College of Business has established a strong reputation in the Des Moines business community. AIB provides a high-quality business education with an emphasis on the employment of graduates. AIB's unique schedule allows students to work in their chosen field, not only earning a degree, but valuable career experience. Day, evening, and online degree programs are available. AIB now offers a Bachelor's Degree program where students with an Associate Degree or other college credits can apply them toward a Bachelor of Science degree in Accounting, Business Administration, Court Reporting, Closed Captioning and Voice Captioning. The 20-acre campus is located near downtown Des Moines and features furnished apartment-style housing, and a sports facility with a gym and fitness center.

BRIAR CLIFF UNIVERSITY

3303 Rebecca Street • Sioux City, IA 51104

Home Page: www.briarcliff.edu

County: Woodbury

Setting: Urban

Accredited by: Higher Learning
Commission of the NCA

Calendar System: Trimester

Enrollment: 1,100

Tuition & Fees: \$22,536

On-Campus Room & Board: \$6,762

Est. Books and Supplies: \$900

Vice President of Enrollment

Management: Sharisue Wilcoxon
712-279-5200 or 800-662-3303

FAFSA Code: 001846

County Population: 125,000

Control/Affiliation: Roman Catholic

Highest Offering or Degree: Master's

Types of Programs: Bachelor of Arts,
Bachelor of Science, Bachelor of Science in
Nursing, Bachelor of Social Work, Master of
Arts in Human Resource Management and
Master of Science in Nursing

Priority Deadline for Aid Filing: March 15

Minimum Admission Requirement:

2.0 GPA

18 ACT score

Financial Aid Director: Robert Piechota
712-279-5200 or 800-662-3303

Briar Cliff University is a nationally recognized, academically rigorous, liberal arts university located in Sioux City, Iowa. With a deep commitment to openness and respect for the individual which is rooted in our Catholic Franciscan tradition, Briar Cliff shapes the hearts, minds and lives of its students.

Because teaching and learning at Briar Cliff focuses on outcomes, graduates enjoy an outstanding placement rate and are equipped with the skills and insight to be successful in the workplace and beyond. Small classes ensure that professors know students as individuals, working side-by-side to meet their academic goals and develop their personal values.

From the moment you arrive on our safe, scenic, hilltop campus, you will appreciate what our research defines as "an exceptionally welcoming campus."



BUENA VISTA UNIVERSITY

610 W. Fourth Street • Storm Lake, IA 50588

Home Page: www.bvu.edu

County: Buena Vista

Setting: Agricultural Community

Accredited by: Higher Learning

Commission of the NCA

Calendar System: 4-1-4

Enrollment: 1,050

Tuition & Fees: \$25,540

On-Campus Room & Board: \$7,292

Est. Books and Supplies: \$750

Director of Admissions:

Mark Shea

800-383-2821 or 712-749-2235

FAFSA Code: 001847

County Population: 20,411

Control/Affiliation: Private/Presbyterian

Highest Offering or Degree: Master's

Types of Programs: Career-based Liberal
Arts and General, Teacher Preparation, Pre-
Professional, Master's Degree in Education

Priority Deadline for Aid Filing: April 1

Minimum Admission Requirement:

HS with Superior Aptitude

Financial Aid Director:

Leanne Valentine

800-383-2821 or 712-749-2164



Buena Vista University (BVU) is a regionally acclaimed four-year institution providing a comprehensive curricular and co-curricular experience for its student body. Students are engaged in experiential, hands-on learning and mentored by distinguished faculty who inspire students to be innovative and imaginative in their academic and professional preparation.

When students come to BVU, they'll find great opportunities for learning that are relevant to the continually changing needs of whatever career path they choose to follow. Our supportive professors and staff really care about the success of our students both inside and outside the classroom. Their commitment, supported by strong academic programs, leading-edge teaching technology and facilities, along with opportunities to apply classroom theory to actual practice, all create one of the best learning environments at any private college in the upper Midwest. We have over 115 years of tradition and educational expertise focused entirely on positive learning outcomes for our students. At BVU, students discover a whole new way of learning.

CENTRAL COLLEGE

812 University Street • Pella, IA 50219

Home Page: www.central.edu

County: Marion

Setting: Pella, Iowa - town of 10,000
situated 40 miles SE of Des Moines

Accredited by: Higher Learning
Commission of the NCA

Calendar System: Semester

Enrollment: 1,600

Tuition & Fees: \$25,010

On-Campus Room & Board: \$8,368

Est. Books and Supplies: \$920

Dean of Admission:

Carol Williamson

641-628-7616 or 877-462-3687

FAFSA Code: 001850

County Population: 30,200

Control/Affiliation: Reformed Church in America

Highest Offering or Degree: Baccalaureate

Types of Programs: Liberal Arts and
Pre-Professional

Priority Deadline for Aid Filing: March 15

Minimum Admission Requirement:

3.0 GPA, 20 ACT; top 50% of graduating class

Financial Aid Director:

Jean Vander Wert

641-628-5336



Central College offers students a wide array of strong majors and pre-professional programs. A Central College education is grounded in the liberal arts which provides a broad background and develops critical thinking and communication skills. Your experience at Central will open the doors to unlimited opportunities to take you farther than you've ever dreamed.

A four-year, residential, liberal arts college affiliated with the Reformed Church in America, Central has eight study abroad programs throughout the world in which almost half of Central's students study.

Quality facilities are a main attraction on campus. Two buildings have received a gold and silver rating in Leadership in Energy and Environmental Design from the U. S. Green Building Council, and an application has been made for a platinum rating, the highest rating given, for the education and psychology building opening fall 2009.

Students participate in numerous campus activities and intercollegiate athletics. During the past 10 years, the Dutch athletics program produced more than 100 all-Americans and 11 academic all-Americans from 19 sports offered. A member of the NCAA Division III and Iowa Intercollegiate Athletic Conference, Central has won 11 national titles.

CLARKE COLLEGE

1550 Clarke Drive • Dubuque, IA 52001

Home Page: www.clarke.edu

County: Dubuque

Setting: Urban

Accredited by: Higher Learning
Commission of the NCA

Calendar System: Semester

Enrollment: 1,156

Tuition & Fees: \$23,520

On-Campus Room & Board: \$6,840

Est. Books and Supplies: \$1,000

Admissions Director:

Andy Schroeder

563-588-6316 or 800-383-2345

FAFSA Code: 001852

County Population: 92,000

Control/Affiliation: Roman Catholic

Highest Offering or Degree: Doctorate

Types of Programs: Liberal Arts & Sciences,
Fine Arts, Nursing, Teacher Education,
Business, Education, Health Professions

Priority Deadline for Aid Filing: April 15

Minimum Admission Requirement:

2.5 GPA, ranking in top 50%

in HS graduating class,

competitive ACT or SAT score

Financial Aid Director:

Sharon Willenborg

563-588-6327 or 800-383-2345



Clarke College is a dynamic, Catholic, coeducational, liberal arts college known for superb teaching and academics. Academic offerings include more than 40 undergraduate liberal arts and pre-professional programs and four graduate degree programs. Founded in 1843 by the Sisters of Charity of the Blessed Virgin Mary, Clarke is located near the Mississippi River in Dubuque, Iowa. The college's 55-acre campus is a blend of historic buildings and new, state-of-the-art facilities.

COE COLLEGE

1220 First Avenue NE • Cedar Rapids, IA 52402

Home Page: www.coe.edu

County: Linn

Setting: Urban

Accredited by: Higher Learning
Commission of the NCA

Calendar System: Semester

Enrollment: 1,300

Tuition & Fees: \$29,270

On-Campus Room & Board: \$7,150

Est. Books and Supplies: \$1,000

Dean of Admission:

John Grundig
877-225-5663

FAFSA Code: 001854

County Population: 200,000

Control/Affiliation: Independent

Highest Offering or Degree: Master's

Types of Programs: Liberal Arts,
Sciences & General, Business Administration,
Fine Arts, Teacher Preparation,
Pre-Professional

Priority Deadline for Aid Filing: March 1

Minimum Admission Requirement:
20 ACT, 3.0 GPA

Director of Financial Aid:

Barbara Hoffman
877-CALL-COE

Founded in 1851, Coe College redefines the liberal arts with its recent addition of a required hands-on component.

In addition to major and general education courses, Coe students must complete Coe's well renowned Coe Plan. The plan, which includes 20 hours of community service, issue dinners and career-planning seminars, culminates with practical experiences. Students may satisfy this last requirement through an internship, research, practicum or study abroad.

Coe College is one of the few private liberal arts institutions in the country to require hands-on learning for graduation. One student studied the effects of selective logging on rain forest organisms in Costa Rica while others interned at places like Warner Bros. and the Chicago Board of Trade. Many students have also combined international travel with internships or student teaching.



CORNELL COLLEGE

600 First Street, West • Mt. Vernon, IA 52314

Home Page: www.cornellcollege.edu

County: Linn

Setting: Small Town

Accredited by: Higher Learning
Commission of the NCA

Calendar System:

One-Course-At-A-Time

Enrollment: 1,115

Tuition & Fees: \$29,580

On-Campus Room & Board: \$7,500

Est. Books and Supplies: \$810

Vice President for Admissions

& Financial Aid: Jonathan Stroud
877-579-4049 or 319-895-4215

Financial Aid Director: Cindi Reints
319-895-4216 or 877-579-4049

FAFSA Code: 001856

County Population: 197,262

Control/Affiliation: Independent,
United Methodist

Highest Offering or Degree: Baccalaureate

Types of Programs: Liberal Arts,
Pre-Professional, Teacher Education

Priority Deadline for Aid Filing: March 1

Minimum Admission Requirement:

Admissions committee recommends a secondary education program that includes: 4 years of English; 3 or more years of mathematics, 3 or more years of science, 2 or more years of foreign language, 3 or more years of social studies



Cornell College, the original Cornell, was founded in 1853, and the historic 129 acre campus is home of an attractively diverse student body of 1,121 who come from 48 states and 20 countries. Cornell's student-faculty ratio of 11:1, an average class size of 16, and class cap of 25, enables its exceptional faculty to provide students with highly personalized experience. Our distinctiveness begins in the classroom with our One Course At A Time (OCAAT) academic calendar and extends onto the campus where there is a strong sense of community, mentoring relationships between faculty and students and endless opportunities to lead and volunteer. Explore Cornell and see for yourself how we're creating one extraordinary opportunity after another for bright motivated students.

DIVINE WORD COLLEGE

102 Jacoby Drive, SW • P.O. Box 380 • Epworth, IA 52045

Home Page: www.dwci.edu

County: Dubuque

Setting: Agricultural Community

Accredited by: Higher Learning
Commission of the NCA

Calendar System: Semester

Enrollment: 59

Tuition & Fees: \$10,900

On-Campus Room & Board: \$2,850

Est. Books and Supplies: \$500

Admissions Director:

Leonard Uhal
800-553-3321

FAFSA Code: 001858

County Population: 90,000

Control/Affiliation: Roman Catholic

Highest Offering or Degree: Baccalaureate

Types of Programs: Liberal Arts & General

Priority Deadline for Aid Filing: August 1

Minimum Admission Requirement:

HS diploma/GED

Financial Aid Director:

Carolyn M. Waechter
800-553-3321

Divine Word College Seminary in Epworth, Iowa, is the only four-year Catholic college in the United States devoted primarily to preparing men for work as future missionary brothers or priests. Students at Divine Word College receive a liberal arts education with a world view and major in either cross-cultural studies or philosophy. An associate of arts degree in cross-cultural studies is also available. Other special academic features can include junior year abroad, summer ministry placement for academic credit, and the opportunity to take selected courses at nearby colleges. Divine Word College is owned and operated by the Divine Word Missionaries, an international community of priests and brothers.



DORDT COLLEGE

498 Fourth Avenue, NE • Sioux Center, IA 51250

Home Page: www.dordt.edu

County: Sioux

Setting: Agricultural Community

Accredited by: Higher Learning
Commission of the NCA

Calendar System: Semester

Enrollment: 1,360

Tuition & Fees: \$22,080

On-Campus Room & Board: \$6,010

Est. Books and Supplies: \$910

Admissions Executive Director:

Quentin Van Essen
712-722-6080 or 800-343-6738

FAFSA Code: 001859

County Population: 30,200

Control/Affiliation: Christian Reformed

Highest Offering or Degree: Master's

Types of Programs: Liberal Arts, General,
Teacher Education, BSN, BSW, BSE

Priority Deadline for Aid Filing: April 1

Minimum Admission Requirement:

HS-GED, ACT test

Financial Aid Director:

Michael Epema
712-722-6082



Dordt College is a Christian, comprehensive college located in Sioux Center, Iowa. Ninety-five percent of our students are full-time, and close to 90 percent live on campus. Associated with the Christian Reformed Church, we welcome all students interested in a Christ-centered education.

Dordt College offers accredited programs in Engineering, Nursing and Social Work, plus Agriculture, Business Administration, Computer Science, Digital Media, and some 35 other majors and areas of concentration.

DRAKE UNIVERSITY

2507 University Avenue • Des Moines, IA 50311

Home Page: www.drake.edu

County: Polk

Setting: Urban

Accredited by: Higher Learning
Commission of the NCA

Calendar System: Semester

Enrollment: 3,516 Undergraduate,
1237 Graduate, 915 Professional

Undergraduate Tuition & Fees: \$25,622

On-Campus Room & Board: \$7,800

Est. Books and Supplies: \$900

Vice President of Admission &

Financial Aid: Tom Delahunt

515-271-2092 or

800-44-DRAKE, ext. 2092

Director, Student Financial Planning:

Susan Ladd 515-271-2905 or

800-44-DRAKE ext. 2905

FAFSA Code: 001860

County Population: 400,000

Control/Affiliation: Independent/
Non-denominational

Highest Offering or Degree: Doctorate

Types of Programs: Liberal Arts & General,
Teacher Preparation, Professional

Undergraduate Programs: Humanities,
Social Sciences, Natural Sciences, Fine Arts,
Business, Journalism, Health Science, Education

Graduate Programs: Master's, Specialist,
and Doctorate in Education, Pharmacy
Doctorate, Master's Programs in Business
and Public Administration, Master of
Communication and Leadership, Juris
Doctorate

Priority Deadline for Aid Filing: March 1

Minimum Admission Requirement: HS-GED

Drake University is a private,
master's university in Des
Moines, the state's center
for business, publishing,
government, and culture.

Drake offers its students more
than 70 undergraduate majors
in six colleges and schools
– Arts and Sciences, Business
and Public Administration,
Education, Fine Arts, Journalism
and Mass Communication, and
Pharmacy and Health Sciences.

90 percent of Drake graduates
find professional employment
or enter graduate school within
six months of earning their
degree.



EMMAUS BIBLE COLLEGE

2570 Asbury Road • Dubuque, IA 52001

Home Page: www.emmaus.edu

County: Dubuque

Setting: Urban

Accredited by: ABHE and Higher
Learning Commission of the NCA

Calendar System: Semester

Enrollment: 250 undergraduate

Tuition & Fees: \$11,714

On-Campus Room & Board: \$5,396

Est. Books and Supplies: \$600

Admissions Director:

Israel Chavez

800-397-2425, ext. 1320

FAFSA Code: 016487

County Population: 90,000

Control/Affiliation: Plymouth Brethren

Highest Offering or Degree: Baccalaureate

Types of Programs: Computer Information
Systems, Intercultural Studies, Elementary
Education, Music Ministry, Youth Ministries,
Biblical Exposition & Theology, Music
Education, Business Administration, Counseling
Psychology

Priority Deadline for Aid Filing: June 10

Minimum Admission Requirement:

HS-GED

Financial Aid Director:

Steve Seeman 800-397-2425, ext. 1309



Emmaus Bible College is an institution of higher learning where our faculty demonstrate scholarship and our students are expected to excel in learning. Emmaus seeks to disciple its students, not merely educate them. Students are trained in the context of a Christian community that offers maximum opportunity for spiritual growth. All students major in Bible and receive a double major if they also enroll in any of four other academic programs offered. Feel free to stop by and visit the campus to see if Emmaus may be the place for you. Or send an e-mail to our admissions department, info@emmaus.edu.

FAITH BAPTIST BIBLE COLLEGE AND THEOLOGICAL SEMINARY

1900 NW Fourth Street • Ankeny, IA 50023

Home Page: www.faith.edu

County: Polk

Setting: Suburban

Accredited by: ABHE and Higher Learning Commission of the NCA

Calendar System: Semester

Enrollment: 417 Students

Tuition & Fees: \$13,260

On-Campus Room & Board: \$5,510

Est. Books and Supplies: \$940

Admissions Director: Mark Davis
515-964-0601 or 888-FAITH-4-U

FAFSA Code: 007121

County Population: 400,000

Control/Affiliation: Independent/Nonprofit

Highest Offering or Degree: Professional

Types of Programs: Terminal Occupational below the BA, Professional

Priority Deadline for Aid Filing: March 15

Minimum Admission Requirement:
HS-GED

Financial Aid Director: Breck Appell
515-964-0601 or 888-FAITH-4-U

Faith Baptist Bible College exists to prepare students for life and ministry. Whether a student is looking to go into "full time" ministry as a pastor or missionary or simply looking to gain a better understanding of God's Word to better prepare for life, Faith excels at preparing students for both. On the undergraduate level, programs are offered in Biblical Studies, Elementary Education, Secondary Education, Pastoral, Assistant Pastoral, Secretarial, and Music ministries. An emphasis in counseling and youth ministries are also available. The graduate program offers three Master of Arts degrees and the Master of Divinity Degree. Each program is carefully designed to integrate classroom learning and practical opportunities in ministry.

While academics are the core of a Faith education, the college and seminary also offer a variety of opportunities for involvement. Students participate in several varsity sports as well as intramural competition. Many Faith students are also given opportunities to travel throughout the United States and abroad on ministry and missions teams.



GRACELAND UNIVERSITY

1 University Place • Lamoni, IA 50140

Home Page: www.graceland.edu

County: Decatur

Setting: Agricultural Community

Accredited by: Contact Graceland University for details

Calendar System: Semester

Enrollment: 980

Tuition & Fees: \$20,090

On-Campus Room & Board: \$6,780

Est. Books and Supplies: \$1,000

Dean of Admissions:

Greg Sutherland
866-GRACELAND

FAFSA Code: 001866

County Population: 8,338

Control/Affiliation: Community of Christ

Highest Offering or Degree: Master's

Types of Programs: Liberal Arts, General and Teacher Preparation, Nursing and more

Priority Deadline for Aid Filing: March 1

Minimum Admission Requirement:

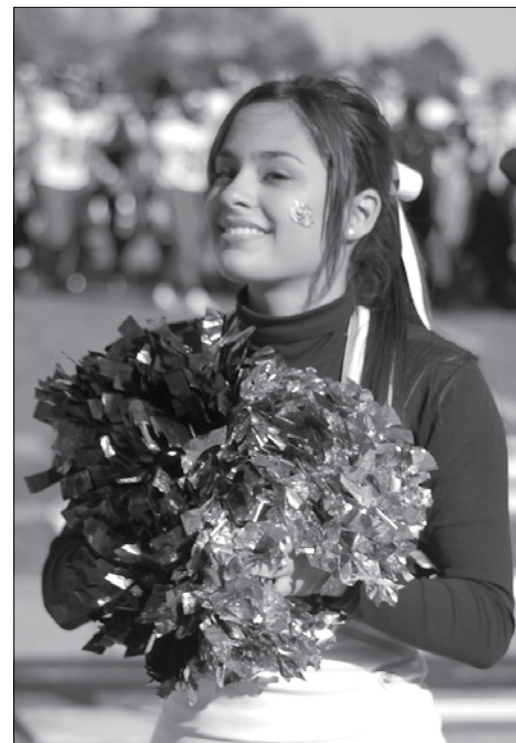
H.S. grad.; upper half of class; 2.5 GPA; min. score of ACT 21/SAT 960. (Applicants who do not meet the criteria may be considered individually.)

Director of Financial Aid Services:

Christine McGee
641-784-5136

For more than 100 years, Graceland University has challenged students to embrace learning as a lifestyle. Graceland students are encouraged and empowered to pursue diverse academic, social, religious, and personal interests within the context of a solid liberal arts tradition. The university's rich history began on the original campus in Lamoni, Iowa, and now extends to Independence, Missouri, as well as satellite sites and programs offered globally via the internet.

Graceland students represent more than 30 states and 47 countries. Students may choose from more than 50 academic programs, including four Master's programs. Activities include 19 varsity sports, 10 performing arts ensembles, and more than 50 clubs and organizations. In recent years, Graceland students have found success at the regional, national, and world levels in athletics, leadership, robotics, and theatre.



GRAND VIEW UNIVERSITY

1200 Grandview Avenue • Des Moines, IA 50316

Home Page: www.grandview.edu

County: Polk

Setting: Urban

Accredited by: Higher Learning
Commission of the NCA,
National League of Nursing,
State Board of Nursing,
IA Dept. of Education

Calendar System: Semester

Enrollment: 1,936 undergraduate

Tuition & Fees: \$19,274

On-Campus Room & Board: \$6,492

Est. Books and Supplies: \$900

Admissions Director: Diane Johnson
800-444-6083

FAFSA Code: 001867

County Population: 400,000

Control/Affiliation: Evangelical Lutheran
Church in America

Highest Offering or Degree: Master's

Types of Programs: Liberal Arts,
Teacher Education, Nursing, Business,
Graphic Design, Pre-Professional

Priority Deadline for Aid Filing: March 1

Minimum Admission Requirement:

HS-GED

Financial Aid Director: Michele Dunne
515-263-2820



Preparing students to succeed in their chosen careers, contribute to their communities and build satisfying lives is what Grand View is about, hence the University mission: engage, equip, empower. The success of Grand View's graduates is unparalleled. Every year for the past decade and a half, nearly 100% of the most recent graduating class was placed within six months of graduation-employed or enrolled in graduate school.

Much of that success is due to the challenging classroom environment. In the most recent National Survey of Student Engagement, Grand View achieved higher scores than all of its comparison groups for presenting students with an academic challenge. But the rest can be chalked up to the frequent and intensive practical workplace experiences more than 85% of Grand View students gain- internships, clinicals and practicums- and a vibrant campus life that emphasizes engagement.

GRINNELL COLLEGE

Office of Admission • Grinnell, IA 50112-1690

Home Page: www.grinnell.edu

County: Poweshiek

Setting: Small Town

Accredited by: Higher Learning
Commission of the NCA

Calendar System: Semester

Enrollment: 1,623

Tuition & Fees: \$36,476

On-Campus Room & Board: \$8,536

Est. Books and Supplies: \$900

Dean of Admission & Financial Aid:

Seth Allen

641-269-3600 or 800-247-0113

FAFSA Code: 001868

County Population: 19,000

Control/Affiliation: Independent

Highest Offering or Degree: Baccalaureate

Types of Programs: Liberal Arts & Sciences

Priority Deadline for Aid Filing: February 1

Minimum Admission Requirement:

Very Selective

Financial Aid Director: Arnold Woods
641-269-3250

Grinnell College is an undergraduate, four-year, coeducational, residential college that seeks to develop in students both analytical and imaginative thinking in the liberal arts and sciences. The college exists to serve students directly and society indirectly; the ultimate goal is to educate citizens and leaders for our republic and the world beyond our borders. To this end, our graduates are equipped to pursue successful careers, satisfying personal lives, effective community service, and intellectually satisfying and physically active leisure. Selective in admission, the college is a multicultural residential community open to the intellectually qualified who are willing to participate. The college supports and encourages a faculty of active scholars whose primary mission is to teach.



IOWA WESLEYAN COLLEGE

601 North Main Street • Mt. Pleasant, IA 52641

Home Page: www.iwc.edu

County: Henry

Setting: Agricultural/
Industrial Community

Accredited by: Higher Learning
Commission of the NCA

Calendar System: Semester

Enrollment: 843 undergraduate

Tuition & Fees: \$21,000

On-Campus Room & Board: \$6,842

Est. Books and Supplies: \$1,100

Admissions Director: Mark Petty
319-385-6231 or 800-582-2383

FAFSA Code: 001871

County Population: 16,000

Control/Affiliation: United Methodist

Highest Offering or Degree: Baccalaureate
Types of Programs: Liberal Arts, General
and Teacher Preparation and Nursing

Priority Deadline for Aid Filing: April 1

Minimum Admission Requirement:

2.5 GPA, 19 ACT

Financial Aid Director: Deb Morrissey
319-385-6242 or 800-582-2383

Iowa Wesleyan College, established in 1842, is one of the oldest private, coeducational colleges west of the Mississippi River. The mission of Iowa Wesleyan College is to prepare students to succeed in a changing global environment. Iowa Wesleyan is a four-year liberal arts college providing quality individualized learning experiences that combine the development of the intellect with adaptive life skills. The college is affiliated with the United Methodist Church with which it shares a commitment to spiritual values, social justice and human welfare.



LORAS COLLEGE

1450 Alta Vista • Dubuque, IA 52001

Home Page: www.loras.edu

County: Dubuque

Setting: Urban

Accredited by: Higher Learning
Commission of the NCA

Calendar System: Semester

Enrollment: 1,683 undergraduate

Tuition & Fees: \$25,335

On-Campus Room & Board: \$7,026

Est. Books and Supplies: \$1,300

Admission Director: Sharon Lyons
563-588-7236 or 800-245-6727

FAFSA Code: 001873

County Population: 90,000

Control/Affiliation: Roman Catholic

Highest Offering or Degree: Master's

Types of Programs: Liberal Arts and
General, Teacher Preparation,
Pre-Professional Programs

Priority Deadline for Aid Filing: April 15

Minimum Admission Requirement:

Recommended minimum 2.5 GPA and
20 ACT score

Financial Aid Director: Julie A. Dunn
563-588-7136 or 800-245-6727



Established in 1839, The Loras College campus is nestled high atop the majestic bluffs of the Mississippi River in Dubuque, Iowa, and overlooks the states of Illinois, Wisconsin and Iowa. With an enrollment of just under 1,700, Loras is small enough to be personal, yet large enough to provide students a well-rounded academic and co-curricular experience. All full-time students at Loras receive a laptop computer for academic and personal use, and are offered over 40 majors and 13 pre-professional areas of study. There are also 21 collegiate athletic programs and over 100 clubs and organizations to be involved in at Loras. You will find numerous campus ministry, service, study abroad and internship opportunities to further your experience at Loras.

Loras has earned the 13th spot in the Top Tier among Best Midwest Baccalaureate Colleges in the 2009 edition of "America's Best Colleges" by U.S. News & World Report. To find out more about Loras College, visit campus! Go to www.loras.edu/visit, or call 1-800-245-6727.

LUTHER COLLEGE

700 College Drive • Decorah, IA 52101

Home Page: www.luther.edu

County: Winneshiek

Setting: Agricultural Community

Accredited by: Higher Learning
Commission of the NCA

Calendar System: 4-1-4

Enrollment: 2,423

Tuition & Fees: \$32,290

On-Campus Room & Board: \$5,380

Est. Books and Supplies: \$910

Vice President for Enrollment Management:

Scot Schaeffer

563-387-1430 or 800-458-8437

FAFSA Code: 001874

County Population: 21,188

Control/Affiliation: Evangelical Lutheran
Church in America

Highest Offering or Degree: Baccalaureate

Types of Programs: Liberal Arts

Priority Deadline for Aid Filing: March 1

Minimum Admission Requirement:

HS with Superior Aptitude

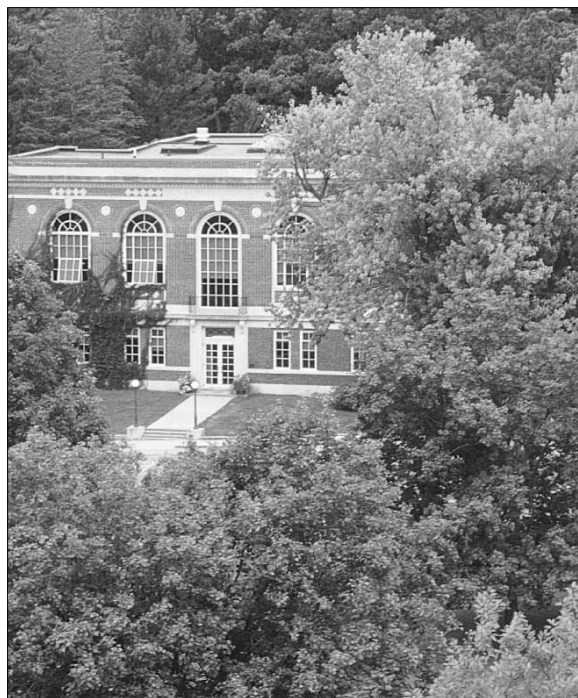
Director of Financial Aid:

Janice Cordell

563-387-1018 or 800-458-8437

Founded in 1861, Luther College is a four-year, liberal arts institution affiliated with the Evangelical Lutheran Church in America.

One of the outstanding undergraduate institutions in the Midwest, Luther offers more than 60 majors and pre-professional programs leading to the bachelor of arts degree. 90% of Luther's 178 full-time faculty hold an earned doctorate or terminal degree. A Phi Beta Kappa chapter attests the academic excellence of the college. Forty states and 44 countries are represented in the student body; co-curricular activities include 16 music ensembles and 19 intercollegiate sports. The scenic Decorah campus, with exceptional facilities and vistas of the Oneota Valley and the Upper Iowa River, rivals any in the region.



MAHARISHI UNIVERSITY OF MANAGEMENT

1000 N. Fourth Street • Fairfield, IA 52557

Home Page: www.mum.edu

County: Jefferson

Setting: Entrepreneurial and
Agricultural Community

Accredited by: Higher Learning
Commission of the NCA

Calendar System: Semester

Enrollment: 1,230

Tuition & Fees: \$24,430

On-Campus Room & Board: \$6,000

Est. Books and Supplies: \$1,000

Admissions Director:

Barbara Rainbow

641-472-1110 or 800-369-6480

FAFSA Code: 011113

County Population: 20,000

Control/Affiliation: Independent

Highest Offering or Degree: Doctorate

Types of Programs: Liberal Arts, General
and Teacher Preparation

Priority Deadline for Aid Filing: April 15

Minimum Admission Requirement:

HS-GED

Financial Aid Director:

Bill Christensen

641-472-1156 or 800-369-6480



Maharishi University of Management (MUM) offers Consciousness-Based education to enable students to discover the field of pure consciousness within themselves as the source of all knowledge.

Other features of MUM include:

- * The Transcendental Meditation course to develop the student's inner potential. Extensive published research has found that this technique boosts learning ability and creativity, improves brain functioning, and reduces stress.
- * Block system: one course at a time to learn more... without the stress
- * Sustainability: B.S. in Sustainable Living, and MBA in Sustainable Business
- * Natural health program for all students
- * Organic vegetarian meals served fresh daily
- * Active learning – bringing knowledge to life
- * Visitors Weekends are held each month throughout the year

MORNINGSIDE COLLEGE

1501 Morningside Avenue • Sioux City, IA 51106

Home Page: www.morningside.edu
County: Woodbury
Setting: Urban
Accredited by: Higher Learning
 Commission of the NCA
Calendar System: Semester
Enrollment: 1,906
Tuition & Fees: \$22,020
On-Campus Room & Board: \$6,740
Est. Books and Supplies: \$940
Admissions Director: Robbie Rohlena
 712-274-5111 or 800-831-0806

FAFSA Code: 001879
County Population: 102,605
Control/Affiliation: United Methodist
Highest Offering or Degree: Master's
Types of Programs: Liberal Arts, General,
 Teacher Preparation & Professional
Priority Deadline for Aid Filing: March 1
Minimum Admission Requirement: 20 ACT and
 2.5 GPA or top 50% of class
Financial Aid Director: Karen Gagnon
 712-274-5159



The Morningside College experience cultivates a passion for lifelong learning, and a dedication to ethical leadership and civic responsibility. Morningside College offers a total experience. Students develop various dimensions of themselves through the liberal arts core curriculum, a complete range of majors, internships, independent study, and career and graduate school advising services.

Within six months of graduation, more than 98% of graduates are employed or admitted to graduate school.

MOUNT MERCY COLLEGE

1330 Elmhurst Drive, NE • Cedar Rapids, IA 52402-4798

Home Page: www.mtmercy.edu
County: Linn
Setting: Urban
Accredited by: Higher Learning
 Commission of the NCA
Calendar System: 4-1-4
Enrollment: 1,555 undergraduate
Tuition & Fees: \$22,100
On-Campus Room & Board: \$6,980
Est. Books and Supplies: \$1,000
Vice President of Enrollment and Student Services:
 Dr. Sue Oatey
 319-368-6462 or
 800-248-4504 ext. 6462

FAFSA Code: 001880
County Population: 190,000
Control/Affiliation: Roman Catholic
Highest Offering or Degree: Graduate and
 Baccalaureate degrees
Types of Programs: Liberal Arts and
 Professional Programs
Priority Deadline for Aid Filing: March 1
Minimum Admission Requirement: 20 ACT,
 2.50 Core GPA, Upper 50% of Class
Director of Financial Aid:
 Bethany Rinderknecht
 319-368-6467 or
 800-248-4504 ext. 6467



Small Campus. Big Results.

Students who come to Mount Mercy appreciate the benefits of small. At Mount Mercy, you experience personal attention, hands-on learning and service, leadership development, friends across campus, and alumni eager to serve as mentors. All these benefits come with big results. Founded by the Sisters of Mercy in 1928, our student population today carries on their remarkable tradition of caring and serving others.

NORTHWESTERN COLLEGE

101 Seventh Street, SW • Orange City, IA 51041

Home Page: www.nwciowa.edu

County: Sioux

Setting: Agricultural Community

Accredited by: Higher Learning
Commission of the NCA, CCNE,
NCATE, CSWE, CAATE, IACBE

Calendar System: Semester

Enrollment: 1,225 undergraduate

Tuition & Fees: \$22,240

On-Campus Room & Board: \$6,756

Est. Books and Supplies: \$900

Director of Admissions:

Mark Bloemendaal
712-707-7130 or 800-747-4757

FAFSA Code: 001883

County Population: 31,589

Control/Affiliation: Reformed Church in America

Highest Offering or Degree: Baccalaureate

Types of Programs: Liberal Arts, General, Athletic
Training, Biology/Health Professions, Christian
Education/Youth Ministry, Teacher Preparation,
Business Administration, Art/Graphic Design,
Public Relations, Actuarial Science, Cinema/
Digital Video, Exercise Science, Music Ministry,
and Nursing

Priority Deadline for Aid Filing: April 1

Minimum Admission Requirement: HS-GED

Director of Financial Services:

Teresa Gunderson
712-707-7131



Northwestern College emphasizes the development of the whole person – mind, body and spirit – in a caring, Christ-centered community. Northwestern integrates faith with rigorous learning in a way that imparts not just knowledge, but wisdom. Students are prepared for careers in a constantly changing workplace and, more importantly, they are prepared for lives of leadership and service.

The academic program includes more than 40 majors and numerous opportunities for off-campus study. Northwestern students are taught by faculty who have earned the highest degrees in their fields at such institutions as Notre Dame, Duke, Vanderbilt and UCLA. Most of Northwestern's buildings have been constructed or significantly renovated in the last 15 years.

SIMPSON COLLEGE

701 North C Street • Indianola, IA 50125

Home Page: www.simpson.edu

County: Warren

Setting: Small Town/Suburban

Accredited by: Higher Learning
Commission of the NCA

Calendar System: Semester

Enrollment: 2,017 Undergraduate

Tuition & Fees: \$25,733

On-Campus Room & Board: \$7,261

Est. Books and Supplies: \$900

Vice President of Enrollment:

Deborah Tierney
515-961-1624 or
800-362-2454 ext. 1624

FAFSA Code: 001887

County Population: 40,671

Control/Affiliation: United Methodist

Highest Offering or Degree: Master's

Types of Programs: Liberal Arts and
General, Teacher Preparation

Priority Deadline for Aid Filing: April 1

Minimum Admission Requirement: High School
diploma/GED; Admissions Committee evaluates
high school transcript reflecting a strong college
prep curriculum, ACT/SAT scores, and class
rank, as well as recommendation(s).

Assistant V.P. of Enrollment & Financial

Assistance: Tracie Paxon
515-961-1630 or
800-362-2454 ext. 1630



Simpson College is more than a beautiful campus. The college has an outstanding faculty and renowned curricula, including more than 40 majors, minors and pre-professional programs. A 4-4-1 calendar provides students with many interesting learning opportunities, including internships, career observations and study programs both abroad and in the United States. Located just 12 miles from Des Moines, Iowa's capital and largest metropolitan area, Simpson's ideal location allows students the opportunity to enjoy both city sophistication and small-town charm. The beautiful 73-acre tree-lined campus provides a setting that nurtures creativity, energy and productivity.

ST. AMBROSE UNIVERSITY

518 W. Locust Street • Davenport, IA 52803-2898

Home Page: www.sau.edu

County: Scott

Setting: Urban

Accredited by: Higher Learning
Commission of the NCA

Calendar System: Semester

Enrollment: 3,900 total
2,900 undergraduate

Tuition & Fees: \$22,590

On-Campus Room & Board: \$8,255

Est. Books and Supplies: \$1,200

Admissions Office: Meg Halligan
563-333-6300 or 800-383-2627

FAFSA Code: 001889

County Population: 200,000

Control/Affiliation: Roman Catholic

Highest Offering or Degree: Doctorate

Types of Programs: Liberal Arts and General,
Teacher Preparation, Professional

Priority Deadline for Aid Filing: March 15

Minimum Admission Requirement:
2.5 GPA or 20 ACT

Financial Aid Director:
Julie Haack
563-333-6314

At St. Ambrose, you'll find a top-notch education tailored to your ambition and personalized to your needs. We start by offering more than 75 majors – a huge number for a small, student-centered school like ours – and the flexibility to mix majors, minors and electives to match your interests.

Our housing, which includes suite-style, apartment-style, and townhouse living, is said to be the best in the region. We have 21 varsity sports for men and women in a highly successful and varied athletic program.



UNIVERSITY OF DUBUQUE

2000 University • Dubuque, IA 52001

Home Page: www.dbq.edu

County: Dubuque

Setting: Urban

Accredited by: Higher Learning
Commission of the NCA

Calendar System: Semester

Enrollment: 1,500 total
1,300 undergraduate

Tuition & Fees: \$20,770

On-Campus Room & Board: \$6,990

Est. Books and Supplies: \$950

Dean of Admission:
Jesse James
800-722-5583

FAFSA Code: 001891

County Population: 65,000

Control/Affiliation: Presbyterian [PC (USA)]

Highest Offering or Degree: Doctorate

Types of Programs: Accounting, Aviation,
Biology, Business, Computer Graphics &
Interactive Media, Health, Wellness &
Recreation, Nursing, Philosophy, Psychology,
Religious Studies, Sociology, Speech
Communication

Priority Deadline for Aid Filing: April 1

Minimum Admission Requirement:
ACT or SAT required; GPA considered

Dean of Student Financial Planning:
Tim Kremer
563-589-3170



The University of Dubuque is a private, coeducational professional university with a focus in the liberal arts. Our commitment to nurturing the mind, body, and spirit, as well as encouraging students to explore their fullest potential, is part of a rich Christian heritage that dates back to the University's founding in 1852.

We strive to balance the cultural and spiritual values within traditional higher education with excellent professional preparation in programs planned for 21st century needs and opportunities – all linked with informed and inspired uses of technology. The University's program leadership in Aviation, Business, Computer Graphics/Interactive Media, Education, Environmental Science, and Nursing is nationally recognized. Our welcoming interfaith community of students comes from across the country and around the globe.

UPPER IOWA UNIVERSITY

P.O. Box 1859 • Fayette, IA 52142

Home Page: www.uiu.edu

County: Fayette

Setting: Agricultural Community

Accredited by: Higher Learning
Commission of the NCA

Calendar System: Semester

Enrollment: 5,716 undergraduate
(including Fayette campus and
14 extended University Centers)

Tuition & Fees: \$21,418

On-Campus Room & Board: \$6,578

Est. Books and Supplies: \$1,400

Vice President for Enrollment Management:

Lincoln Morris
Parker Fox Hall, Box 1859
800-553-4150 opt. 3

FAFSA Code: 001893

County Population: 21,761

Control/Affiliation: Independent/Nonprofit

Highest Offering or Degree: Master's

Types of Programs: Business, Liberal Arts,
Physical Sciences, General and Teacher
Preparation

Priority Deadline for Aid Filing: March 1

Minimum Admission Requirement:

2.0 GPA, 16 ACT

Director of Financial Aid:

Jobyna Johnston
Alexander-Dickman Hall, Box 1859
800-553-4150 opt. 3



Since 1857, Upper Iowa University has been developing leaders by providing conscious liberal arts based education, both undergraduate and graduate, through flexible and multiple delivery systems including a residential campus, off-campus learning centers, online and correspondence programs.

The residential campus in Fayette, Iowa offers a complete college experience with over 35 degree programs, small class sizes and a unique academic calendar which allows students to take only two courses at a time every eight weeks. These advantages, along with generous financial aid and scholarships, allow Upper Iowa students to graduate on time and with less debt than most other private and public institutions in the state. Upper Iowa is also the only NCAA Division II Institution in Iowa.

WALDORF COLLEGE

106 South Sixth Street • Forest City, IA 50436

Home Page: www.waldorf.edu

County: Winnebago

Setting: Agricultural Community

Accredited by: Higher Learning
Commission of the NCA

Calendar System: Semester

Enrollment: 640 undergraduate

Tuition & Fees: \$20,554

On-Campus Room & Board: \$5,954

Est. Books and Supplies: \$940

V.P. Admissions & Financial Aid:

Dawn Johnson
800-292-1903

FAFSA Code: 001895

County Population: 11,351

Control/Affiliation: Evangelical Lutheran
Church in America

Highest Offering or Degree: Baccalaureate

Types of Programs: Biology, Business,
Communications, Education, English, History,
Humanities, Music, Psychology, Theatre,
Wellness

Priority Deadline for Aid Filing: March 1

Minimum Admission Requirement:

2.0 GPA, 18 ACT

Financial Aid Director:

Duane Polsdofer
800-292-1903

Learn, live and serve - Waldorf College's tagline describes what a Waldorf education is all about. Students learn at Waldorf by taking challenging classes and being actively involved in their majors. Waldorf students live life to the max by participating in athletics, fine arts, clubs, organizations, and student activities. Waldorf students serve by being involved in campus ministries, completing internships or simply by being a community-minded individual. Founded in 1903, Waldorf is accredited as a bachelor's college. By combining a strong foundation of liberal arts and adding a required element of applied learning to every major area, Waldorf prepares students to be productive citizens of the world. More than 98% of Waldorf graduates enter their chosen field within six months of graduating.



WARTBURG COLLEGE

100 Wartburg Blvd. • P.O. Box 1003 • Waverly, IA 50677-0903

Home Page: www.wartburg.edu

County: Bremer

Setting: Rural Community

Accredited by: Higher Learning

Commission of the NCA

Calendar System: 4-4-1

Enrollment: 1,799 undergraduate

Tuition & Fees: \$27,450

On-Campus Room & Board: \$7,615

Est. Books and Supplies: \$1,010

Assistant Vice President for Admissions:

Todd Coleman

todd.coleman@wartburg.edu

319-352-8264 or 800-772-2085

FAFSA Code: 001896

County Population: 23,837

Control/Affiliation: Evangelical Lutheran
Church in America

Highest Offering or Degree: Baccalaureate

Types of Programs: Liberal Arts and
General, Teacher Preparation

Priority Deadline for Aid Filing: March 1

Minimum Admission Requirement:

19 ACT, Upper half of class, 2.5 HS GPA

Financial Aid Director:

Jennifer Sassman

319-352-8262 or 800-772-2085



Wartburg is a private, Lutheran, liberal arts college with an enrollment of 1799 students, including 99 international students from 39 countries. Dedicated to challenging and nurturing students for lives of leadership and service, the college is characterized by vigorous academic expectations within an environment of strong personal support.

A Wartburg education emphasizes undergraduate research, experiential learning through practicums, internships and cultural immersions; leadership development through workshops, mentoring, class work, and community partnerships; as well as a focus on ethics, values, and multicultural and global experiences. May Term, part of Wartburg's 4-4-1 academic calendar, gives students unique opportunities for study abroad or participation in field experiences and internships. Notably, Wartburg has a placement average of 97% of graduates who are placed in jobs or graduate schools within seven months of graduation.

WILLIAM PENN UNIVERSITY

201 Trueblood Avenue • Oskaloosa, IA 52577

Home Page: www.wmpenn.edu

County: Mahaska

Setting: Agricultural Community

Accredited by: Higher Learning

Commission of the NCA

Calendar System: Semester

Enrollment: 1,800 Undergraduate

Tuition & Fees: \$18,934

On-Campus Room & Board: \$5,292

Est. Books and Supplies: \$950

Vice President of Enrollment:

John Ottosson

641-673-1012 or 800-779-7366

FAFSA Code: 001900

County Population: 21,900

Control/Affiliation: Quaker

Highest Offering or Degree: Baccalaureate

Types of Programs: Liberal Arts,
Pre-Professional, Teacher Preparation

Priority Deadline for Aid Filing: April 15

Minimum Admission Requirement:

2.0 GPA, ACT 18, HS Diploma/GED

Financial Aid Director:

Cyndi Peiffer

641-673-1060



William Penn University offers a quality liberal arts education that is firmly rooted in leadership development. Professors who care about your personal goals, combined with opportunities for campus and community involvement, build an educational foundation that will prepare you for success!

Founded by Quaker pioneers, William Penn University embraces traditional values of integrity, simplicity, compassion, ethical practice, acceptance, tolerance, and service. It is also one of the most diverse campuses in Iowa, with students from 43 states and 10 countries.



IOWA'S PROPRIETARY COLLEGES & UNIVERSITIES

ASHFORD UNIVERSITY

400 N. Bluff Boulevard • Clinton, IA 52732

Home Page: www.ashford.edu

County: Clinton

Setting: Suburban

Accredited by: Higher Learning
Commission of the NCA

Calendar System: Semester

Enrollment: 686

Tuition & Fees: \$16,270

On-Campus Room & Board: \$6,000

Est. Books and Supplies: \$1,150

Admissions Director:

Jason Woods

800-242-4153

FAFSA Code: 001881

County Population: 49,782

Control/Affiliation: Independent

Highest Offering or Degree: Master's

Types of Programs: Arts & Sciences,
Business, Education

Priority Deadline for Aid Filing: March 1

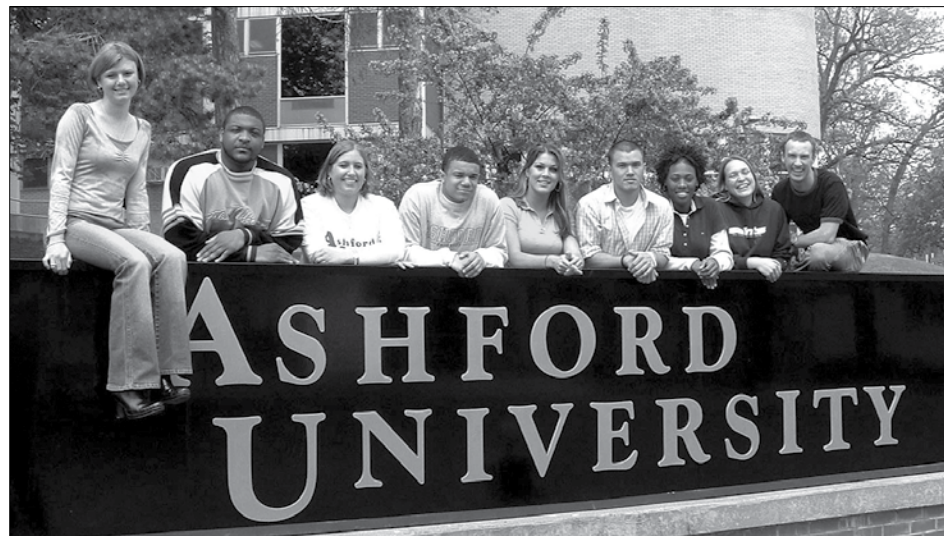
Minimum Admission Requirement:

HS-GED

Financial Aid Director:

Lisa Kramer

800-242-4153



Founded in 1918, Ashford University is committed to providing accessible, affordable, innovative, high quality degree programs to its campus, online, and accelerated students.

We offer programs at our beautiful and historic campus in Clinton, Iowa, and offer a wide array of athletics teams, campus events and activities, that both our campus and online students enjoy. In addition to traditional students, we are also committed to the needs of the working adult learner, and offer a broad selection of bachelor and master degree programs that are flexible and accelerated.

KAPLAN UNIVERSITY

Des Moines • Cedar Rapids • Cedar Falls • Council Bluffs • Mason City • Davenport

Home Page: www.kucampus.edu

County: Varies

Setting: Urban

Accredited by: Higher Learning
Commission of the NCA

Calendar System: Terms

Enrollment: 2,500

Tuition & Fees: \$13,635 - \$14,595

Est. Off-Campus Room & Board: \$17,226

Est. Books and Supplies:

The University provides course material as needed for each program (except Practical Nursing; est. books cost \$1,385)

FAFSA Code: Varies by campus

County Population: Varies by campus

Control/Affiliation: Proprietary

Highest Offering or Degree: Baccalaureate

Types of Programs: Varies by campus
Diplomas, Certificates, AAS Degrees, Bachelor
of Science Degrees, Masters Degrees

Priority Deadline for Aid Filing: None

Minimum Admission Requirement:

HS Diploma, GED

Kaplan University recognizes individual worth and dignity of all people. All students are encouraged to reach their potential within the framework of the individual needs, interests, and capabilities. This is why Kaplan University offers an education through Residential Campuses, Online Platform, or a combination of both.

Each Kaplan University onsite program is taught in specially built classrooms, including computer and medical labs. Kaplan University's online platform is located on the Internet at www.kucampus.kaplan.edu.

Types of programs/ degrees vary by campus and availability.

Offerings include:

Accounting
Business
Communication
Corrections
Crime Scene
Criminal Justice
Education
Global Travel & Hospitality
Health & Wellness
Interdisciplinary Studies
Information Systems
Legal Studies
Medical Assisting
Medical Transcription
Paralegal
Practical Nursing
Psychology
Software Development
Teaching
Teacher Intern



Des Moines Campus

4655 121st Street
Urbandale, Ia 50323
800-383-0253

Admissions Director – Mark Bandy

Director of Financial Aid –

Summer Vaselaar

FAFSA Code: E00925

Cedar Falls Campus

7009 Nordic Drive
Cedar Falls, Ia 50613
800-728-1220

Admissions Director –

Jill Vandelaar

Director of Financial Aid –

Amy Kramer

FAFSA Code: E00920

Cedar Rapids Campus

3165 Edgewood Pkwy S.W.
Cedar Rapids, Ia 52404
800-728-0481

Admissions Director – Dave Ruddy

Director of Financial Aid –

Robert Brooks

FAFSA Code: 004220

Council Bluffs Campus

1751 Madison Ave., Suite 750
Council Bluffs, Ia 51503
800-518-4212

Admissions Director –

Kate Packard

Director of Financial Aid –

Nicole Jenness

FAFSA Code: E01153

Davenport Campus

1801 East Kimberly Road
Davenport, Ia 52807
800-747-1035

Admissions Director –

Jason Wilebski

Director of Financial Aid –

Christine Christopherson

FAFSA Code: 004586

Mason City Campus

2570 4th Street S.W.
Mason City, Ia 50401
800-274-2530

Admissions Director –

Michael Klacik

Director of Financial Aid –

Cathy Gomez

FAFSA Code: E00926

IOWA'S COMMUNITY COLLEGES

CLINTON COMMUNITY COLLEGE

Eastern Iowa Community College District, 1000 Lincoln Blvd. • Clinton, IA 52732

Home Page: www.eicc.edu

County: Clinton

Setting: Suburban

Accredited by: Higher Learning
Commission of the NCA

Calendar System: Semester

Enrollment: 1,240

Tuition & Fees: \$3,210

Est. Off-Campus Room & Board:
\$7,080

Est. Books and Supplies: \$1,600

Admissions Office: Cheryl Tack
800-637-0559

FAFSA Code: 001853

County Population: 50,149

Control/Affiliation: State/Local

Highest Offering or Degree: Associate

Types of Programs: College Transfer Arts &
Sciences, Career/Technical

Priority Deadline for Aid Filing: April 1

Minimum Admission Requirement:

Open Admission

Financial Aid Officer: Teresa Thiede
563-244-7070



Clinton Community College is part of the Eastern Iowa Community College District, which also includes Scott and Muscatine Community Colleges. The district offers more than 40 career education programs and an equal number of college transfer concentrations. The colleges received the maximum accreditation from the North Central Association and work closely with Iowa's Regent institutions to ensure transferability of credits. Technology programs are kept up-to-date due to a strong relationship with the business community.

DES MOINES AREA COMMUNITY COLLEGE

2006 South Ankeny Blvd. • Ankeny, IA 50023

Campuses: Ankeny, Boone, Carroll, Newton, Urban (Des Moines) and West (West Des Moines)

Home Page: www.dmacc.edu

County: Polk & Central Iowa

Setting: Urban, Rural, and Suburban

Accredited by: Higher Learning Commission of the NCA

Calendar System: Semester

Enrollment: 29,573

Tuition & Fees:

\$115 per credit hour (Iowa resident)

\$230 per credit hour (non-resident)

Est. Off-Campus Room & Board:

9-month - \$5,461

Est. Books and Supplies: \$1,160

As one of America's most respected community colleges, Des Moines Area Community College is committed to helping its students achieve success, ignite passions and realize dreams.

DMACC offers a path to more than 75 professions, everything from accounting to welding. Then there are the pre-professional programs in engineering, medicine, law and veterinary medicine. (Despite the variety of career choices, most of DMACC students major in liberal arts while deciding their career path or next step to a four-year school.)

DMACC delivers accessible and affordable learning opportunities that result in high-skill, high-wage jobs. Professors and instructors provide a quality, engaging and practical teaching experience. Despite the College being one of the largest postsecondary institutions in Iowa, class sizes and tuition are among the smallest.

For more information, contact us 24 hours a day at www.dmacc.edu

FAFSA Code: 004589

County Population: 400,000

Control/Affiliation: State/Local

Highest Offering or Degree: Associate

Types of Programs: Terminal Occupational below the BA, 2 years creditable toward a BA

Priority Deadline for Aid Filing: April 1

Minimum Admission Requirement:

Ability to benefit from attendance

Enrollment Manager: Michael Lentsch

800-362-2127 ext. 6216 or 515-964-6216

Financial Aid Director: Delores Hawkins

800-362-2127 ext. 6514 or 515-964-6514



ELLSWORTH COMMUNITY COLLEGE

Iowa Valley Community College District

1100 College Avenue • Iowa Falls, IA 50126

Home Page:

www.iavalley.edu/ecc

County: Hardin

Setting: Agricultural Community

Accredited by: Higher Learning Commission of the NCA

Calendar System: Semester

Enrollment: 1,106

Tuition & Fees: \$4,590

On-Campus Room & Board: \$4,862

Est. Books and Supplies: \$1,000

Admissions Director: Annie Kalous

800-322-9235 ext. 8519

FAFSA Code: 001862

County Population: 18,812

Control/Affiliation: State/Local

Highest Offering or Degree: Associate

Types of Programs: Arts & Sciences, Vocational, Career Option, 2 years creditable toward a BA

Priority Deadline for Aid Filing: June 1

Minimum Admission Requirement:

HS Diploma, GED

Financial Aid Director: Tara Miller

800-322-9235 ext. 8515

Ellsworth Community College (ECC), operated by Iowa Valley Community College District, offers 34 career-oriented degree programs that combine classroom training with on-the-job experience to prepare graduates for employment.

ECC also offers Associate in Arts degrees that transfer easily toward baccalaureate degrees at most four-year colleges and universities.

Specific vocational-tech programs are Accounting, Agribusiness, Agricultural Science, Apparel Merchandising, Biotechnology, Business Administration, Carpentry, Computer Applications, Computer Network Management, Computer Science, Conservation Technology, Construction Technology, Criminal Justice, Equine Management, Farm Management, Fire Science, Laboratory Technology, Marketing, Masonry, Medical Assisting, Merchandising & Retail Management, Microsoft Office Specialist, Nursing (Associate Degree), Nursing (Practical), Office Administration/Computer Applications, Renewable Energy, and Swine Management.



HAWKEYE COMMUNITY COLLEGE

1501 E. Orange Road • Waterloo, IA 50701

Home Page: www.hawkeyecollege.edu

County: Black Hawk

Setting: Urban

Accredited by: Higher Learning
Commission of the NCA

Calendar System: Semester

Enrollment: 5,803

Full Time Tuition & Fees: \$3,472

Est. On-Campus Room & Board:
Not Available

Est. Books and Supplies: \$840

Admissions Director: David Ball
319-296-4000 or 800-670-4743

FAFSA Code: 004595

County Population: 128,000

Control/Affiliation: State/Local

Highest Offering or Degree: Associate

Types of Programs: Terminal Occupational
below the BA and college transfer

Priority Deadline for Aid Filing: July 1

Minimum Admission Requirement:

High school diploma, GED or Assessment

Financial Aid Director:

Lois Mulbrook

319-296-4020



Hawkeye is a comprehensive community college offering college transfer courses and more than 45 vocational areas of training. The College has earned a reputation for small hands-on classes utilizing cutting-edge technology. Academic programs are offered in health, business, agriculture and natural resources, engineering technology, power technology, arts, and human studies. Hawkeye has an outstanding career program graduate placement rate of 97%.

Hawkeye's two-year transfer program allows students to complete the first two years of their four-year degree and transfer to the college or university of their choice. In fact, Hawkeye is the number one source of new students to the University of Northern Iowa.

Hawkeye's continuing education program provides many opportunities to acquire workplace skills, gain industry certifications, or learn a new hobby. The College partners with businesses and community organizations to provide needed training services including customized programs.

INDIAN HILLS COMMUNITY COLLEGE

525 Grandview Avenue • Ottumwa, IA 52501

Other Campus: Centerville

Home Page: www.indianhills.edu

County: Wapello

Setting: Agricultural/
Industrial Community

Accredited by: Higher Learning
Commission of the NCA

Calendar System: Quarter

Enrollment: 4,180

Tuition & Fees: \$2,976

Est. On-Campus Room & Board: \$4,530

Est. Books and Supplies: \$1,416

FAFSA Code: 008298

County Population: 30,000

Control/Affiliation: State/Local

Highest Offering or Degree: Associate

Types of Programs: Terminal Occupational
below the BA, 2 years creditable toward a BA

Priority Deadline for Aid Filing: July 1

Minimum Admission Requirement:

Ability to Benefit

Financial Aid Office: Jo Altheide

641-683-5234 or 800-726-2585

Admissions Director: Jane Sapp

641-683-5153 or 800-726-2585



Indian Hills Community College offers nationally recognized, state-of-the-art advanced technology programs, a strong two-year academic transfer/arts & sciences curriculum, outstanding health occupation fields, and a fun environment, all on two beautiful campuses in Ottumwa and Centerville.

Check out Laser/Electro-optics, Robotics/Automation, Computer Systems/Networks, and Electronics/Telecommunications or perhaps professional level instruction in Computer Programming, Aviation Pilot Training and Aviation Maintenance Technology.

Student activities abound, including wide-ranging campus activities, music and drama presentations, nationally competitive intercollegiate athletics, and intramural sports. Setting Indian Hills apart is its unique campus schedule: just four days per week, with classes held Monday through Thursday. Add that to four terms per year and you have maximum flexibility.

IOWA CENTRAL COMMUNITY COLLEGE

One Triton Circle • Fort Dodge, IA 50501

Other Campuses: Storm Lake and Webster City

Home Page: www.iowacentral.edu

County: Webster

Setting: Agricultural/Industrial Community

Accredited by: Higher Learning Commission of the NCA

Calendar System: Semester

Enrollment: 5,733

Tuition & Fees: \$3,840

On-Campus Room & Board: \$4,975

Est. Books and Supplies: \$900

Admissions Director:

Angie Martin
800-362-2793 ext. 1006

FAFSA Code: 004597

County Population: 38,517

Control/Affiliation: State/Local

Highest Offering or Degree: Associate

Types of Programs: Vocational-Technical

Arts & Sciences College Transfer

Priority Deadline for Aid Filing: March 1

Minimum Admission Requirement:

Open Admission

Financial Aid Director:

Jenny Theesfeld
800-362-2793 ext. 1035



Iowa Central Community College is committed to preparing students for the responsibilities of tomorrow by focusing on academics, personal and professional growth and relating well to people. Our vision is to increase the pool of well-rounded citizens who are fully prepared to meet their professional commitments, enrich their lives through service and improve the quality of life for themselves. We offer growth opportunities that will enable students to make their mark on the world. Combining a challenging and rewarding academic environment within a positive and compassionate atmosphere provides an advantage that is unique to Iowa Central.

IOWA LAKES COMMUNITY COLLEGE

19 S. Seventh Street • Estherville, IA 51334

Other Campuses: Algona, Emmetsburg, Spencer and Spirit Lake

Home Page: www.iowalakes.edu

County: Emmet

Setting: Agricultural Community

Accredited by: Higher Learning Commission of the NCA

Calendar System: Semester

Enrollment: 3,915

Tuition & Fees: \$4,396

On-Campus Room & Board: \$4,800

Est. Books and Supplies: \$940

Dean of Enrollment Management:

Julie Carlson
800-242-5106

FAFSA Code: 001864

County Population: 10,050

Control/Affiliation: State/Local

Highest Offering or Degree: Associate

Types of Programs: Arts & Sciences, Vocational, Career Option, 2 years credit towards a BA

Priority Deadline for Scholarships: April 1

Minimum Admission Requirement:

HS Diploma or GED

Financial Aid Director:

John Beneke
800-242-5108 ext. 229

The picturesque Iowa Great Lakes Region provides the setting for Iowa Lakes Community College. The college is located in the heart of the northwest quadrant of the state of Iowa.

Iowa Lakes has developed a unique and respected role as a comprehensive community college. Founded in 1967,

Iowa Lakes Community College has provided quality, affordable education to the residents of northwest Iowa and southwest Minnesota for more than three decades. Iowa Lakes' five campuses and interactive distance learning system facilitate educational access for rural residents. In addition to "traditional" learning opportunities, diversified offerings of online courses and continuing education enable part-time students to upgrade skills and raise their standards of living through evening and weekend courses. The college is dedicated to serving the changing educational needs of the communities and students of the region.



IOWA WESTERN COMMUNITY COLLEGE

2700 College Road, Box 4C • Council Bluffs, IA 51502

Other Campus: Clarinda

Home Page: www.iwcc.edu

County: Pottawattamie

Setting: Suburban

Accredited by: Higher Learning
Commission of the NCA

Calendar System: Semester

Enrollment: 5,100

Tuition & Fees: \$2,784

On-Campus Room & Board: \$5,724

Est. Books and Supplies: \$900

Admissions Director: Chris LaFerla
800-432-5852

FAFSA Code: 004598

County Population: 89,000

Control/Affiliation: State/Local

Highest Offering or Degree: Associate

Types of Programs: Terminal Occupational
below the BA, 2 years creditable toward a BA

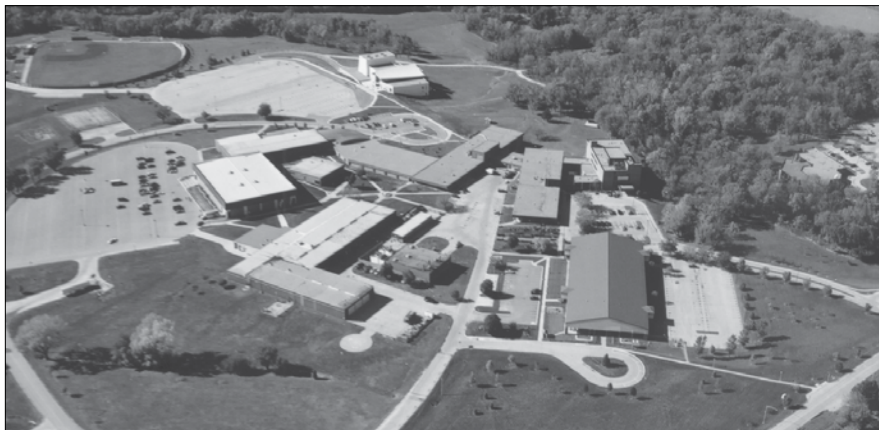
Priority Deadline for Aid Filing: July 1

Minimum Admission Requirement: HS
Diploma or GED

Financial Aid Director: Blaine Duisternars
800-432-5852

Situated on 250 wooded acres in southwest Iowa, Iowa Western Community College (IWCC) offers a great opportunity for high school students from throughout the area to receive quality education at an affordable price. IWCC offers more than 80 college programs to meet the needs of each individual. Students will find a caring, warm atmosphere on the campus and instructors who truly care about helping their students succeed.

IWCC offers a great chance for students to start on their bachelor's degrees with confidence, knowing that their credits will easily transfer to top four-year universities in the area. IWCC's technical programs offer state-of-the-art technology and hands-on experience, one of the many reasons why IWCC graduates are well respected and considered among the best in the work force.



KIRKWOOD COMMUNITY COLLEGE

6301 Kirkwood Blvd., SW • P.O. Box 2068 • Cedar Rapids, IA 52406

Home Page: www.kirkwood.edu

County: Linn

Setting: Urban

Accredited by: Higher Learning
Commission of the NCA

Calendar System: Semester

Enrollment: 15,091

Tuition: \$3,210

Est. Off-Campus Room & Board:
\$3,800

Est. Books and Supplies: \$1,410

Admissions Director: Doug Bannon
800-332-2055 or 319-398-5517

FAFSA Code: 004076

County Population: 198,903

Control/Affiliation: State/Local

Highest Offering or Degree: Associate

Types of Programs: Terminal Occupational
below the BA, 2 years creditable toward a BA

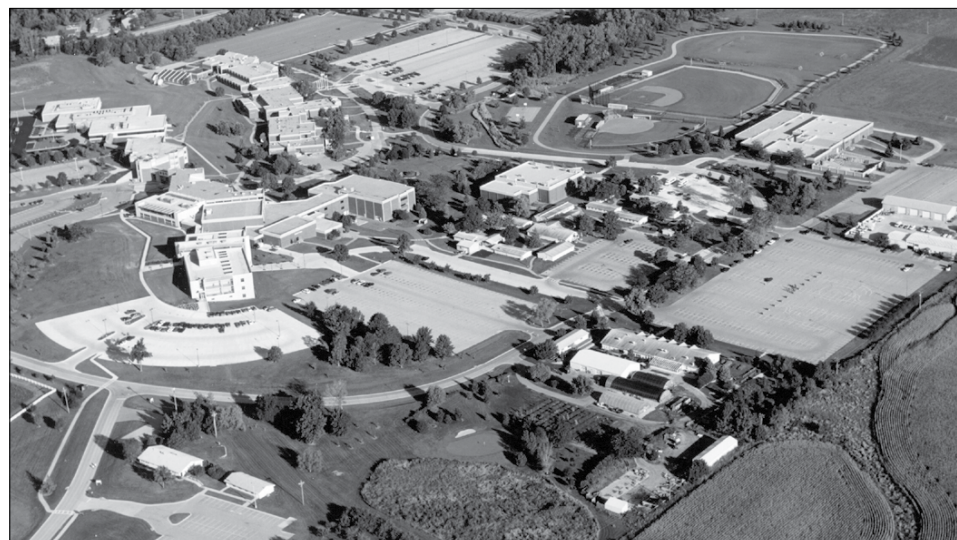
Priority Deadline for Aid Filing: July 1

Minimum Admission Requirement:
Ability to benefit from attendance

Financial Aid Director: Peg Julius
319-398-1274

Kirkwood is a comprehensive community college serving the vocational and college transfer educational needs of recent high school graduates, as well as older adults needing education for career or personal needs. In addition to more than 100 credit programs, Kirkwood provides one of the largest continuing education programs in the nation, as well as customized training for area employers. In addition to its 675-acre Cedar Rapids campus, Kirkwood provides educational services in 11 Learning Centers throughout the seven counties served by the college.

Kirkwood provides a full complement of services for students, including personal and vocational counseling, and placement support. The average age of our students is 24. Kirkwood is serving a growing number of international students, as well as people throughout Iowa.



MARSHALLTOWN COMMUNITY COLLEGE

Iowa Valley Community College District
3700 South Center Street • Marshalltown, IA 50158

Home Page: www.iavalley.edu/mcc

County: Marshall

Setting: Agricultural Community/
Suburban

Accredited by: Higher Learning
Commission of the NCA

Calendar System: Semester

Enrollment: 1,860

Tuition & Fees: \$4,590

On-Campus Room & Board: \$5,680

Est. Books and Supplies: \$1,000

Admissions Director: Deana Inman
641-844-5712

or 866-622-4748 ext. 5712

FAFSA Code: 001875

County Population: 26,100

Control/Affiliation: State/Local

Highest Offering or Degree: Associate

Types of Programs: Arts and Sciences,
Vocational, Career Option, 2 years
creditable toward a BA

Priority Deadline for Aid Filing: July 1

Minimum Admission Requirement:

HS Diploma or GED

Financial Aid Director: Chloe Webb
641-844-5708

or 866-622-4748 ext. 5708



Marshalltown Community College, operated by the Iowa Valley Community College District, offers 23 career-oriented degree programs that provide the knowledge and hands-on training needed to enter the workplace. MCC also offers Associate in Arts degrees that transfer toward baccalaureate degrees at most four-year colleges and universities.

Specific vocational-technical programs are Accounting, Broadcast Technology, Business Administration, Carpentry, Child Development, Computer Applications, Computer Network Management, Computer Science, Construction Technology, Criminal Justice, Dental Assisting, Fisher Controls Process Management Technology, Hospitality Management, Industrial Maintenance Technology, Machine Trades/Tool and Die, Marketing, Mechanical Design/CAD Technology, Mechanical Design/Virtual Reality Technology, Microsoft Office Specialist, Nursing (Associate Degree), Nursing (Practical), Office Administration/Computer Applications, and Sustainable and Entrepreneurial Agriculture.

MUSCATINE COMMUNITY COLLEGE

Eastern Iowa Community College District
152 Colorado Street • Muscatine, IA 52761

Home Page: www.eicc.edu

County: Muscatine

Setting: Small Urban

Accredited by: Higher Learning
Commission of the NCA

Calendar System: Semester

Enrollment: 1,624

Tuition & Fees: \$3,210

Est. On-Campus Room & Board:
\$5,504

Est. Books and Supplies: \$1,600

Admissions Director: Katie Watson
563-288-6012 or 800-351-4669

FAFSA Code: 001882

County Population: 41,772

Control/Affiliation: State/Local

Highest Offering or Degree: Associate

Types of Programs: College Transfer Arts and
Sciences; Career/Technical

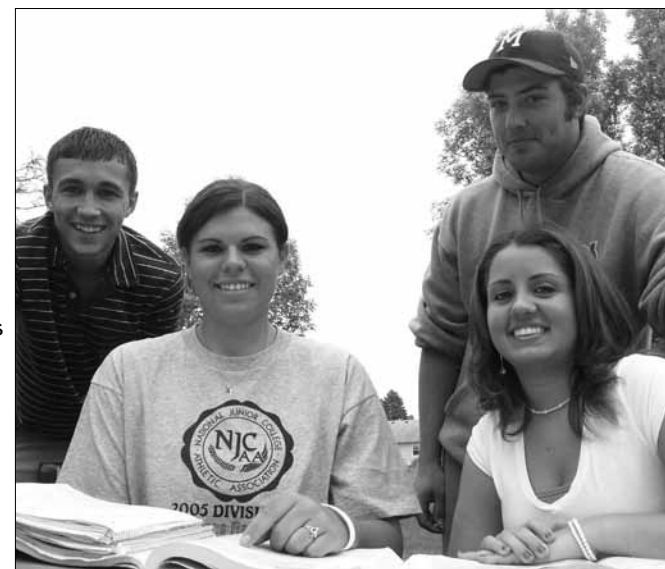
Priority Deadline for Aid Filing: April 1

Minimum Admission Requirement:

Open Admission

Financial Aid Officer: Debi Beatty
563-288-6060

Muscatine Community College is part of the Eastern Iowa Community College District, which also includes Clinton and Scott Community Colleges. The district offers more than 40 career education programs and an equal number of college transfer concentrations. The colleges received the maximum accreditation from the North Central Association and work closely with Iowa's Regent institutions to ensure transferability of credits. Technology programs are kept up-to-date due to a strong relationship with the business community.



NORTH IOWA AREA COMMUNITY COLLEGE

500 College Drive • Mason City, IA 50401

Home Page: www.niacc.com

County: Cerro Gordo

Setting: Agricultural/Industrial Community

Accredited by: Higher Learning

Commission of the NCA

Calendar System: Semester

Enrollment: 3,273

Tuition & Fees: \$3,691

On-Campus Room & Board: \$4,806

Est. Books and Supplies: \$834

Admissions Director: Rachel McGuire

641-422-4104 or 888-466-4222

FAFSA Code: 001877

County Population: 46,447

Control/Affiliation: State/Local

Highest Offering or Degree: Associate

Types of Programs: Transfer, Career, Career

Option, Continuing Education

Priority Deadline for Aid Filing: March 1

Minimum Admission Requirement:

Ability to benefit from attendance

Financial Aid Director: Mary Bloomingdale

641-422-4351 or 888-466-4222

North Iowa Area Community College (NIACC) has served the North Iowa region for 85 years. The college operates a main campus in Mason City, a growing community located between Minneapolis and Des Moines. The countryside campus encompasses more than 500 acres of land, including contemporary instructional and recreational facilities, as well as lake side student housing. NIACC offers the first two years toward a bachelor's degree in most fields and nearly 40 career programs in Business, Industrial Technology, Agriculture, and Health.



NORTHEAST IOWA COMMUNITY COLLEGE

Box 400 • Calmar, IA 52132

10250 Sundown Rd. • Peosta, IA 52068

Home Page: www.nicc.edu

County: Winneshiek & Dubuque

Setting: Agricultural Community

Accredited by: Higher Learning

Commission of the NCA

Calendar System: Semester

Enrollment: 2,580 Peosta/ 2,188 Calmar

Tuition & Fees: \$4,448

Est. Off-Campus Room & Board: \$5,321

Est. Books and Supplies: \$1,400

Admissions Manager/Peosta:

Kristi Streif

800-728-7367 ext. 319

Financial Aid Officer/Peosta:

Kim Baumler

800-728-7367 ext. 212

FAFSA Codes: 004587 Calmar; 012634 Peosta

County Population: 20,934 & 90,000

Control/Affiliation: State/Local

Highest Offering or Degree: Associate

Types of Programs: Technical and Vocational,

2 years creditable toward a BA

Priority Deadline for Aid Filing: July 1

Minimum Admission Requirement:

Applicants must complete one of the following:

Complete Accuplacer testing, submit ACT

scores, or submit an official copy of previous

college transcript

Admissions Director/Calmar: Martha Keune

800-728-2256 ext. 376

Financial Aid Director/Calmar: Jeff Murphy

800-728-2256 ext. 447



Northeast Iowa Community College (NICC) is a comprehensive community college serving the transfer, technical, and vocational education needs of the region's residents, businesses and industries. NICC offers the Associate of Arts degree and general education courses that readily transfer to four-year colleges and universities, as well as leading-edge vocational and technical program options.

The campuses at Peosta and Calmar, along with conveniently located centers in Cresco, downtown Dubuque, Manchester, New Hampton, and Oelwein, feature modern and attractive facilities. Every campus and center is equipped with ICN classrooms and computer labs so students can earn a quality, two-year degree close to home.

Recent studies show 80 percent of NICC students graduating from technical or vocational programs find employment within the first six months after graduation.

NORTHWEST IOWA COMMUNITY COLLEGE

603 West Park Street • Sheldon, IA 51201

Home Page: www.nwicc.edu

County: O'Brien

Setting: Agricultural Community

Accredited by: Higher Learning
Commission of the NCA

Calendar System: Semester

Enrollment: 2,116

Tuition & Fees: \$4,380

Est. Off-Campus Room & Board: \$4,896

Est. Books and Supplies:

9-month - \$980

Director of Enrollment Management:

Lisa Story

800-352-4907

FAFSA Code: 004600

County Population: 14,000

Control/Affiliation: State/Local

Highest Offering or Degree: Associate

Types of Programs: Terminal Occupational
below the BA, 2 years creditable
toward a BA

Priority Deadline for Aid Filing: April 1

Minimum Admission Requirement:

Ability to benefit from attendance

Financial Aid Director:

Karna Hofmeyer

800-352-4907



Northwest Iowa Community College offers both vocational technical programs and arts and science transfer courses— Over 40 programs to choose from.

For students who have chosen the baccalaureate degree track, NCC is a smart place to start a college education. It's more affordable to get your first two years at NCC and then transfer to a 4-year university. Small class sizes ensure personal attention needed to succeed.

The technical programs can prepare you in two years or less with skills needed in some of the largest and fastest growing occupations. In addition to many well-known established programs, NCC offers 4 programs which can not be found anywhere else in the state of Iowa: Powerline, Industrial Instrumentation and Control, Advanced Standing Electrical Technology, and Heavy Equipment. Instructors are eager to share their "on the job" experience with their students.

SCOTT COMMUNITY COLLEGE

Eastern Iowa Community College District • 500 Belmont Road • Bettendorf, IA 52722

Home Page: www.eicc.edu

County: Scott

Setting: Urban

Accredited by: Higher Learning
Commission of the NCA

Calendar System: Semester

Enrollment: 4,111

Tuition & Fees: \$3,210

Est. Off-Campus Room & Board:

\$7,080

Est. Books and Supplies: \$1,600

Admissions Specialist:

LaDrina Wilson

563-441-4000

FAFSA Code: 004074

County Population: 158,668

Control/Affiliation: State/Local

Highest Offering or Degree: Associate

Types of Programs: College Transfer Arts
and Sciences; Career/Technical

Priority Deadline for Aid Filing: April 1

Minimum Admission Requirement:

Open Admission

Financial Aid Officer:

Jeannine Ingelson

563-441-4040



Scott Community College is part of the Eastern Iowa Community College District, which also includes Clinton and Muscatine Community Colleges. The district offers more than 40 career education programs and an equal number of college transfer concentrations. The colleges received the maximum accreditation from the North Central Association and work closely with Iowa's Regent institutions to ensure transferability of credits. Technology programs are kept up-to-date due to a strong relationship with the business community.

SOUTHEASTERN COMMUNITY COLLEGE

1500 W. Agency Road • P.O. Box 180 • West Burlington, IA 52655-0180

Other campus: Keokuk

Home Page: www.scciaowa.edu

County: Des Moines

Setting: Urban

Accredited by: Higher Learning
Commission of the NCA

Calendar System: Semester

Enrollment: 3,300

Tuition & Fees: \$3,660

On-Campus Room & Board: \$5,310

Est. Books and Supplies: \$940

Senior Enrollment Officer:

Dana Chrisman

866-SCC-IOWA ext. 5017 WB

Kari Bevans

866-SCC-IOWA ext. 1928 KEO

FAFSA Code: 004603

County Population: 40,885

Control/Affiliation: State/Local

Highest Offering or Degree: Associate

Types of Programs:

Terminal Occupational below the BA,
2 years creditable toward a BA

Priority Deadline for Aid Filing: July 1

Minimum Admission Requirement:

Ability to benefit from attendance

Financial Aid Director:

Gwen Scholer

800-828-7322 ext. 5015

It is the mission of Southeastern Community College (SCC) to provide quality, affordable and accessible life long learning opportunities that meet or exceed the expectations of the people we serve. SCC has two main campuses, West Burlington and Keokuk, and also offers classes at the Fort Madison and Mt. Pleasant centers. SCC offers more than 35 Career Education Programs including Respiratory Care, Chemical Dependency Counselor, and Information Technology. General education courses are offered during the day, evening, and online.



SOUTHWESTERN COMMUNITY COLLEGE

1501 W. Townline Street • Creston, IA 50801

Home Page: www.swcciaowa.edu

County: Union

Setting: Agricultural Community

Accredited by: Higher Learning

Commission of the NCA

Calendar System: Semester

Enrollment: 1,400

Tuition & Fees: \$3,675

On-Campus Room & Board: \$4,150

Est. Books and Supplies: \$1,250

Admissions Coordinator:

Lisa Carstens

641-782-7081 or 800-247-4023

FAFSA Code: 001857

County Population: 12,309

Control/Affiliation: State/Local

Highest Offering or Degree: Associate

Types of Programs: 2 years creditable toward
a BA, Adult and Continuing Education

Priority Deadline for Aid Filing: July 1

Minimum Admission Requirement:

Ability to benefit from attendance

Financial Aid Director:

Tracy Davis

641-782-1434 or 800-247-4023

Southwestern Community College (SWCC) is a comprehensive community college located in Creston. SWCC students receive solid foundations in liberal arts, and credits transfer easily to four-year institutions. Career and technical education programs are offered in a number of occupational and career education fields for students choosing to complete hands-on education and go directly into the workforce.

Southwestern Community College has center locations in Red Oak and Osceola. The college offers online learning opportunities for students as well.



WESTERN IOWA TECH COMMUNITY COLLEGE

4647 Stone Avenue • Box 5199 • Sioux City, IA 51106-5199

Home Page: www.witcc.edu

County: Woodbury

Setting: Urban

Accredited by: Higher Learning

Commission of the NCA

Calendar System: Semester

Enrollment: 7,665

Tuition & Fees: \$3,690

On-Campus Room & Board: \$4,887

Est. Books and Supplies: \$1,000

Admissions Director:

Lora Vander Zwaag

712-274-6400 or 800-352-4649

FAFSA Code: 004590

County Population: 120,000

Control/Affiliation: State/Local

Highest Offering or Degree: Associate

Types of Programs: Terminal Technical and
Arts & Sciences below the BA

Priority Deadline for Aid Filing: July 1

Minimum Admission Requirement:

HS Diploma, GED or ability to benefit

Financial Aid Director:

Don Duzik

712-274-6402



Western Iowa Tech Community College offers a broad range of programs to nearly 8,000 students registered for credit classes. Among last fall registrants, 47 percent enrolled in arts and sciences and 53 percent were enrolled in technical programs. Throughout the year, 749 students graduated with one or more awards. The vast majority of these graduates (97 percent) became employed or continued their education. More than 140 employers hired WITCC graduates. These strong numbers reflect the college's attractive features: affordable tuition, flexible scheduling, active campus life, and quality education.



IOWA'S NURSING & HEALTHCARE PROFESSION COLLEGES

ALLEN COLLEGE

1825 Logan Avenue • Waterloo, IA 50703

Home Page: www.allencollege.edu

County: Black Hawk

Setting: Urban

Accredited by: Iowa Board of Nursing,
Higher Learning Commission of the NCA,
NLN, JRCERT, ACN

Calendar System: Semester

Enrollment: 462

Tuition & Fees: \$14,579

On-Campus Room & Board: \$6,816

Est. Books and Supplies: \$1,012

Admissions Counselor:

Michelle Koehn
319-226-2002

Recruiters:

Molly Quinn & Holly Risetter
319-226-2001

Financial Aid Coordinator:

Kathie S. Walters
319-226-2003

FAFSA Code: 030691

County Population: 126,806

Control/Affiliation: Iowa Health System, Inc.

Highest Offering or Degree: Master's

Types of Programs: Associate of Science in
Radiography (ASR), Bachelor of Science
in Nursing (Upper Division, 15 month
Accelerated and RN-BSN options), Bachelor
of Health Science (Nuclear Medicine
Technology and Clinical Laboratory Science
options), Master of Science in Nursing
(Nurse Practitioner tracks in: Acute Care,
Adult Psychiatric Mental Health, Family and
Gerontological, as well as Nurse Educator
and Nurse Leadership)

Priority Deadline for Aid Filing: July 1

Minimum Undergraduate Admission

Requirements: HS ranking in the upper half of
graduating class or GED equivalent, 20 ACT
score, 3.0 on all HS coursework, 2.7 on all
college coursework



Allen College is a quality, private, multipurpose college for Allied Health, Nursing and Radiography. To provide general education courses, Allen College has developed unique relationships with Hawkeye Community College in Waterloo, Loras College in Dubuque, University of Northern Iowa in Cedar Falls and Wartburg College in Waverly. Our Master of Science in Nursing program offers a Family Nurse Practitioner, Acute Care Nurse Practitioner, Adult Psychiatric Mental Health Nurse Practitioner, Gerontological, Health Educator, or Leadership in Health Care Delivery emphasis. Our Bachelor of Science in Nursing program is designed to prepare a generalist in nursing who can function in a variety of health care settings. Our Associate of Science in Radiography program offers a wide variety of educational opportunities for the student radiographer. Beginning in the fall 2009, Allen College will offer a Bachelor of Health Science degree with specialties in Clinical Laboratory Science and Nuclear Medicine Technology.

DES MOINES UNIVERSITY

3200 Grand Avenue • Des Moines, IA 50312

Home Page: www.dmu.edu

County: Polk

Setting: Urban

Calendar System: Varied

Enrollment: 1,700

Tuition:

Osteopathic Medicine - \$35,840

Podiatric Medicine - \$25,960

Physician Assistant - \$24,960

Physical Therapy - \$20,540

Post Professional DPT - \$435

per credit hour (alumni)

or \$480 per credit hour (non-alumni)

MPH and MHA - \$465 per credit hour

MSA and MBS - \$9,200/ year

Est. Off-Campus Room & Board: \$19,470

Est. Books and Supplies: \$3,900

FAFSA Code: 015616

County Population: 400,000

Control/Affiliation: Independent, Nonprofit

Highest Offering or Degree: DO, DPM,
DPT, PA, MPH, MHA, MSA, MBS

Types of Programs:

Professional and Graduate

Priority Deadline for Aid Filing: April 15

Minimum Admission Requirement: Varies

Director of Admission:

Jamie Rehmann

515-271-1451

Financial Aid Director:

Mary Payne

515-271-1470

The University is committed to training health professionals who will provide distinctive, effective, and humanistic care for our nation's citizens. To achieve this goal, the University stresses a commitment to teaching and research in the healing arts; in the science and art of osteopathic medicine and surgery; in the science and art of podiatric medicine and surgery; and in the instruction and training of medical administrators, technologists, and other paramedical personnel. The unique aspect of our mission is our osteopathic educational philosophy, which emphasizes holistic medicine and wellness, and weaves our academic community into an osteopathic university.



MERCY COLLEGE OF HEALTH SCIENCES

928 6th Avenue • Des Moines, IA 50309-1239

Home Page: www.mchs.edu

County: Polk

Setting: Urban

Accredited by: Higher Learning

Commission of the NCA, NLN, NLNAC,
JRCERT, JRCDS, CRNE, CAAHEP/ARC-
St., Iowa Board of Nursing

Calendar System: Semester

Enrollment: 676 Undergraduates

Tuition & Fees: \$13,000

Est. On-Campus Room & Board: \$4,600

Est. Books and Supplies: \$1,200

FAFSA Code: 006273

County Population: 400,000

Control/Affiliation: Catholic Health Initiatives

Highest Offering or Degree: Baccalaureate

Types of Programs: Nursing (ASN & BSN),
Physical Therapist Assistant (AS), Radiologic
Technology (AS), Surgical Technology (Cert/AS),
Cardiac and Abdominal Sonography (AS),
Sleep Disorder Technology (Cert/AS), Nuclear
Medicine Technology (Adv. Cert), Health
Care Administration (BS), Allied Health (BS),
Medical Assisting (Cert/AS), and Emergency
Medical Services - Paramedic (Cert/AS)

Priority Deadline for Aid Filing: June 30

Minimum Admission Requirement:

See Mercy College website for details

www.mchs.edu/admission-requirements1.cfm

Financial Aid Director: Wayne Dille

515-643-6611 or 800-637-2994 ext. 36611

Mercy College of Health Sciences is a Catholic institution of higher education, guided by the pursuit of knowledge and the core values of Mercy: reverence, integrity, compassion, and excellence. Through integration of professional education with liberal arts and sciences, the College prepares graduates for service and leadership in the health care community. If you think you know Mercy College – an institution spanning 110 years of educating healing professionals – we might surprise you.

Our students are among the best and brightest, and come from many different backgrounds, cultures and experiences. They become:

- * Certified Nursing Assistants
- * Clinical Lab Scientists
- * Diagnostic Medical Sonographers
- * Health Care Administration Leaders
- * Medical Assistants
- * Nuclear Medicine Technologists
- * Paramedics
- * Pharmacy Technicians
- * Physical Therapist Assistants
- * Registered Nurses
- * Radiologic Technologists
- * Sleep Technicians
- * Surgical Technologists

Our graduates go everywhere. They embark upon health care careers across the nation and around the world. They also stay right here in Iowa to take care of folks within our own community. Our faculty and staff are talented and dedicated to offering excellent service, and our alumni are among the best in their field.



PALMER COLLEGE OF CHIROPRACTIC

1000 Brady Street • Davenport, IA 52803
• Port Orange, Florida • San Jose, California

Home Page: www.palmer.edu

County: Scott

Setting: Urban

Accredited by: CCE, Higher Learning Commission of the NCA

Calendar System: Trimester in Davenport, Quarters in Florida and California

Enrollment: 2,400

Tuition & Fees: \$27,540

Est. Off-Campus Room & Board: \$17,964

Est. Books and Supplies: \$2,220

FAFSA Code: 012300

County Population: 162,687

Control/Affiliation: Independent, Nonprofit

Highest Offering or Degree: DC, MS
Anatomy and Clinical Research

Priority Deadline for Aid Filing: April 1

Minimum Admission Requirement:
90 Semester Hours of Undergraduate Study

Admissions Office:

800-722-3648, ext. 1

Financial Aid Director:

Sue McCabe

800-722-3648, ext. 2

The mission of Palmer College of Chiropractic, based upon the Palmer Tenets, is to educate and prepare students to become Doctors of Chiropractic qualified to serve as direct access primary health care providers and clinicians, competent in wellness promotion, health assessment, diagnosis and the chiropractic management of the patient's health care needs. Palmer is committed to advancing the understanding of chiropractic through research; to providing service to the field of chiropractic, including continuing education; and to serving humanity through patient care and community education.



ST. LUKE'S COLLEGE

2720 Stone Park Blvd • Sioux City, IA 51104

Home Page: www.stlukescollege.edu

County: Woodbury

Setting: Urban

Accredited by: Iowa Board of Nursing, Higher Learning Commission of NCA, NLNAC, JRCERT, NAACLS, CAAHEP, CoARC

Calendar System: Semester

Enrollment: 181 undergraduates

Tuition & Fees: \$14,640

Est. Books and Supplies: \$1,350

Admissions Office: Sherry McCarthy

712-279-3149 or

800-352-4660, ext. 3158

FAFSA Code: 007291

County Population: 105,000

Control/Affiliation: St. Luke's Regional Medical Center

Highest Offering or Degree: Associate

Types of Programs: Nursing, Radiologic Technology, Respiratory Care, and Clinical Lab Sciences

Priority Deadline for Aid Filing: March 1

Minimum Admission Requirement: HS GPA

of 2.5 or GED and ACT of 19; or college

GPA of 2.3 on transferable credit

Coordinator of Financial Aid/ Registrar:

Danelle Johannsen 712-279-3149 or

800-352-4660, ext. 3377



St. Luke's is a two-year, hospital-based institution that offers Associate of Science Degrees in Nursing, Radiologic Technology, and Respiratory Care and a certificate degree in Clinical Lab Sciences. In addition, St. Luke's College offers internships in Computerized Tomography, Mammography, Magnetic Resonance Imaging, and Ultrasound.

The curriculum is designed with a foundation in the biological, physical, and social sciences, integrated with theory and experience in the clinical lab setting. The college emphasizes hands-on, patient care learning. Student involvement with patient care begins early in the first year of study.

OTHER IOWA COLLEGES

BEAUTY, BARBER & MASSAGE THERAPY COLLEGES

American College of Hairstyling
1531 First Avenue SE
Cedar Rapids, IA 52402
Phone: 319-362-1488
Email:
admissions@americancollegeofhair.com
Website: americancollegeofhair.com

American College of Hairstyling
603 E. Sixth Street
Des Moines, IA 50309
Phone: 515-244-0971
E: admissions@americancollegeofhair.com
Website: americancollegeofhair.com

American Hair Academy
910 Avenue G
Fort Madison, IA 52627
319-372-6248
E: bhill@lisco.com

Bio-Chi Institute of Massage Therapy
1925 Geneva Street
Sioux City, IA 51103
712-252-1157
E: contact@bci-ed.com
Website: bci-ed.com

Capri College
2945 Williams Parkway SW
Cedar Rapids, IA 52404
Phone: 800-397-0612
E: cradm@capricollege.com
Website: capricollege.com

Capri College
2540 East 53rd Street
Davenport, IA 52807
Phone: 800-728-1336
E: davadm@capricollege.com
Website: capricollege.com

Capri College
395 Main Street
Dubuque, IA 52004
Phone: 800-728-0712
E: dbqadm@capricollege.com
Website: capricollege.com

College of Hair Design
722 Water Street
Squires Square, Suite 201
Waterloo, IA 50703
Phone: 319-232-9995
E: chd722@aol.com
Website: chd.net

Carlson College of Massage Therapy
11807 County Road X-28
Anamosa, IA 52205
319-462-3402
Website: www.carlsoncollege.com

Dayton's School of Hair Design
315 N Main Street
Burlington, IA 52601
Phone: 319-752-3193

Dayton's School of Hair Design
23 S. Second Street
Keokuk, IA 52632
Phone: 319-524-6445

E Q School of Hair Design
536 W. Broadway
Council Bluffs, IA 51503
Phone: 712-328-2613
Website: eqschool.net

Faust Institute of Cosmetology
1290 N. Lake Avenue
Storm Lake, IA 50588
Phone: 712-732-6570
E: faustic@nwiowa.com
Website: faustinstitute.com

Faust Institute of Cosmetology
1543 18th Street
Spirit Lake, IA 51360
Phone: 712-336-3518
E: faustic@nwiowa.com
Website: faustinstitute.com

Iowa School of Beauty
112 Nicholas Drive
Marshalltown, IA 50158
Phone: 641-752-4223
E: marshalltown@iowaschoolofbeauty.com
Website: iowaschoolofbeauty.com

Iowa School of Beauty
609 W Second Street
Ottumwa, IA 52501
Phone: 641-684-6504
E: ottumwa@iowaschoolofbeauty.com
Website: iowaschoolofbeauty.com

Iowa School of Beauty
2524 Glen Avenue
Sioux City, IA 51106
Phone: 712-274-9733
E: siouxcity@iowaschoolofbeauty.com
Website: iowaschoolofbeauty.com

Iowa School of Beauty
3305 70th Street
Urbandale, IA 50322
Phone: 515-278-9939
E: desmoines@iowaschoolofbeauty.com
Website: iowaschoolofbeauty.com

LaJames College of Hairstyling
6322 University Avenue #J
Cedar Falls, IA 50613
Phone: 319-277-2150
E: lajames@lajames.net
Website: lajames.net

LaJames College of Hairstyling
3802 E 53rd Street
Davenport, IA 52807
Phone: 563-441-7900
E: lajames@lajames.net
Website: lajames.net

LaJames College of Hairstyling
8805 Chambery Blvd.
Johnston, IA 50131
Phone: 515-278-2208
E: lajames@lajames.net
Website: lajames.net

LaJames College of Hairstyling
2419 Fifth Avenue S.
Fort Dodge, IA 50501
Phone: 515-576-3119
E: lajames@lajames.net
Website: lajames.net

LaJames College of Hairstyling
227 E Market
Iowa City, IA 52245
Phone: 319-338-3926
E: lajames@lajames.net
Website: lajames.net

LaJames College of Hairstyling
24 Second Street
Mason City, IA 50401
Phone: 641-424-2161
E: lajames@lajames.net
Website: lajames.net

The Salon Professional Academy
309 Kitty Hawk Drive
Ames, IA 50010
Phone: 515-232-7250
E: admissions@tspaames.com
Web: thesalonprofessionalacademy.com

Total Look School of Cosmetology
806 West 3rd Street
Cresco, IA 52136
Phone: 800-242-0977
E: totallook@iowatelecom.net

* Please contact each institution for more information on financial aid opportunities.

THEOLOGICAL SEMINARIES

Faith Baptist Bible College & Theological Seminary
1900 NW Fourth Street
Ankeny, IA 50023
Phone: 888-FAITH-4-U
Website: faith.edu

University of Dubuque
Theological Seminary
2000 University Avenue
Dubuque, IA 52001
Phone: 563-589-3170
Website: udts.dbq.edu

Wartburg Theological Seminary
333 Wartburg Place
Dubuque, IA 52004-5004
Phone: 563-589-0200
Website: wartburgseminary.edu

MEDICAL TECHNOLOGY SCHOOLS

Covenant Medical Center School of Radiologic Technology
3421 W Ninth Street
Waterloo, IA 50702
Phone: 319-272-7296
E: HelfrickK@covhealth.com
Website: covhealth.com/radiology_school.asp

Iowa Methodist Medical Center Schools
1200 Pleasant Street
Des Moines, IA 50309
General Phone: 515-241-6883
Website: www.iowahealth.org

Mercy Medical Center - Sioux City
801 Fifth Street
Sioux City, IA 51101
Phone: 712-279-2371
E: smithmk@mercyhealth.com

Mercy/St. Luke's School of Radiologic Technology
1026 "A" Avenue NE
Cedar Rapids, IA 52402
Phone: 319-369-7097
E: schmitdd@crstlukes.com
Website: isrt.org/mstl.htm

St. Luke's Clinical Laboratory Science Program in Medical Technology
1026 "A" Avenue NE
Cedar Rapids, IA 52402
Phone: 319-369-7309
E: sojkan@crstlukes.com

CAREER/TECHNICAL COLLEGES

Hamilton Technical College
1011 E. 53rd Street
Davenport, IA 52807
Phone: 563-386-3570
E: admissions@hamiltontechcollege.com
Website: hamiltontechcollege.com

OUT-OF-STATE INSTITUTIONS REGISTERED IN IOWA

Bellevue University
Main Campus
1000 Galvin Road South
Bellevue, NE 68005
Toll Free: 800-756-7920
Website: www.bellevue.edu

Bellevue University
2200 River Road
Council Bluffs, IA

Bellevue University
2700 College Road
Council Bluffs, IA 51503

Bellevue University
North 4th Street
Red Oak, IA 51566

Bellevue University
4647 Stone Avenue
Sioux City, IA 51102

Hannibal La Grange College
Main Campus
2800 Palmyra Road
Hannibal, MO 63401
Phone: 573-221-3675
Website: www.hlg.edu

Hannibal La Grange College at
335 Messenger Road
Keokuk, IA 52641

ITT Technical Institute
1860 NW 118th Street, Suite 110
Clive, IA 50325
Phone: 515-327-5500
Toll Free 877-327-5500
Website: www2:itt-tech.edu

University of Phoenix
6600 Westown Parkway
West Des Moines, IA 50266
Phone: 515-267-8218
Toll Free: 866-229-5743
Website: www.phoenix.edu

University of St. Thomas
Main Campus
2115 Summit Ave
St. Paul, MN 55105
Phone: 951-962-5000
Website: www.stthomas.edu

Vatterott College
7000 Fleur Drive
Des Moines, IA 50321
Phone: 515-309-9000
E: desmoines@vatterott-college.edu
Website: vatterott-college.com

Viterbo University Iowa Center
4949 Westown Parkway Suite 195
West Des Moines, IA 50266
Phone: 888-235-2200
Website: www.viterbo.edu

* Please contact each institution for more information on financial aid opportunities.

i have a plan IOWA



Whoever you want to be...

Whatever you want to do...

Wherever you want to go...

You need a plan to make it happen.

- Plan your high school courses
- Explore careers & set goals
- Prepare for the ACT/SAT
- Plan, apply and pay for college



www.IHaveaPlanIowa.gov

Provided by Iowa College Aid - Your Financial Aid Connection

NEED MONEY FOR COLLEGE???

IT'S FREE! IT'S FAST! IT'S EASY!



The Free Application for Federal Student Aid (FAFSA) is used by colleges and universities to determine your eligibility for scholarships, grants, loans, work-study and other financial aid programs. Filing your FAFSA online at www.fafsa.ed.gov is the quickest and most accurate way to file. You should submit your FAFSA as soon after **January 1st** as possible, making sure you meet any college or state deadlines (the deadline for state of Iowa grants is July 1). You **and** one of your parents should apply for a PIN at www.pin.ed.gov before filing. Remember, the FAFSA is a **FREE** application.

QUESTIONS???

Iowa College Aid can help connect you with the essential resources and services you need to obtain money for college. When it comes to your questions, you have our undivided attention!

877-272-4456

www.IowaCollegeAid.gov



IowaCollegeAid.gov
Your Financial Aid Connection

FIGHT THE URGE TO SPLURGE!

Decisions you make with your money while you are in college will impact your financial future. The Super Loan Team will be there to keep you on track when you are tempted to make bad money or student loans decisions. Work with the Super Loan Team to be prepared when

IT'S PAYBACK TIME.



MEET THE SUPER LOAN TEAM

Learn more about borrowing wisely, join the fight against financial lameness and meet the members of the

Super Loan Team at:

www.ItsPaybackTime.org



IowaCollegeAid.gov
Your Financial Aid Connection



www.IowaCollegeAid.gov • Your Financial Aid Connection

Our website connects you to with the college resources you need :

scholarships • grants • student loans • loan forgiveness

skills & interests • career planning • education plans • choosing a college

preparing for college • planning for college • paying for college



IowaCollegeAid.gov
Your Financial Aid Connection

200 10TH ST FL 4th • Des Moines, IA 50309-3609
877-272-4456 • info@iowacollegeaid.gov