

YOUR COURSE TO COLLEGE

2010-2011 EDITION

LOOK FOR US ON FACEBOOK & TWITTER  

GET THE 4-1-1

FAST FACTS

On Iowa's
Colleges &
Universities

Page 29

SUPERSIZE YOUR SCORE

Get Free ACT & SAT Test Prep

Page 7

Scholarships & Grants

Cash In On FREE Money for College

Page 14

STUDENT LOANS

KNOW BEFORE YOU OWE

Page 18

THE FRESHMAN 15

Don't leave home without
these 15 College Must-Haves

Page 8

Careers &
Colleges
How to find
Your Perfect Fit

Page 3



IowaCollegeAid.gov
Your Financial Aid Connection

ABOUT IOWA COLLEGE AID

Welcome to Your Course to College, your official state resource to help you plan, prepare and pay for college. It's full of everything you need to know on the college financial aid process, federal and state financial aid programs, colleges and universities in Iowa, selecting a major and future career, as well as tips to help make the transition to college easy.

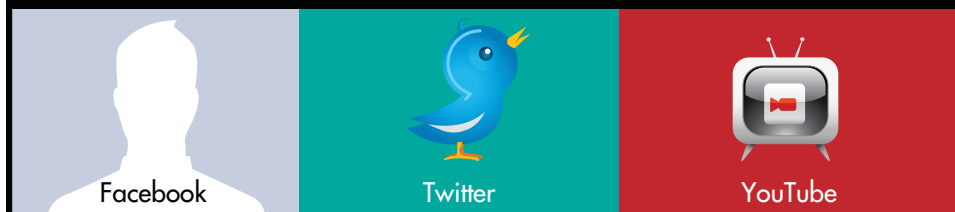
We Serve You:

You can rely on Iowa College Aid for free and reliable information to guide you through the college planning and financial aid process.

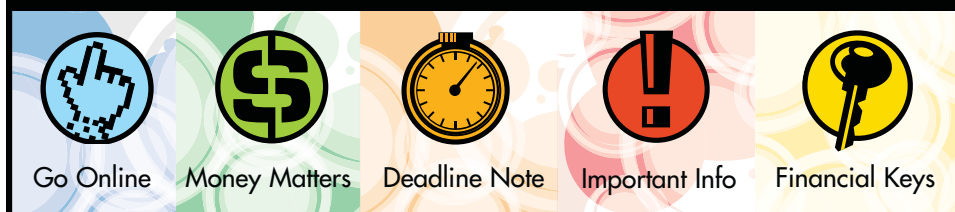
We are a state agency dedicated to serving Iowa students by awarding more than 25,000 scholarships and grants each year. You can learn about low-interest loans and special loan forgiveness opportunities for service in the teaching or nursing professions through Iowa College Aid's valuable information resources.

Visit Iowa College Aid's website at www.iowaCollegeAid.gov or call the Information Service Center at 877-272-4456 for detailed information regarding programs and services. You can also find us on Facebook, follow us on Twitter, and view our videos on YouTube to help you before, during and after college.

Look for us online: Facebook, Twitter & YouTube



Look for these special tips throughout this book.



Important Dates to Remember

September 10, 2010

Registration deadline to take the SAT on October 9, 2010. Go to <http://sat.collegeboard.com/register/sat-dates> for other available test dates.

September 17, 2010

Registration deadline to take the ACT on October 23, 2010. Go to www.actstudent.org/register/nextdates.html for other available test dates.

October 3, 2010

The Golden Circle College Fair will be at the Polk County Convention Complex at 501 Grand Avenue in Des Moines from 12:30 - 3:00 p.m. This is the largest college fair in Iowa with approximately 150 colleges and universities in attendance. Information on other college fairs throughout the state is available in the high school student planning section of the Iowa College Aid website at www.iowaCollegeAid.gov.

January 1, 2011

The FAFSA is available on the web at www.fafsa.gov for the 2011-2012 academic year.

The Iowa Financial Aid Application is available at www.IHaveaPlanIowa.gov to apply for the Robert C. Byrd Honors Scholarship, All Iowa Opportunity Scholarship, All Iowa Opportunity Foster Care Grant, Terry E. Branstad Iowa State Fair Scholarship, Education and Training Voucher Program, and Iowa National Guard Education Assistance Program.

May 1, 2011

Application priority date for the Robert C. Byrd Honors Scholarship and the Governor Terry E. Branstad Iowa State Fair Scholarship application.

May 10, 2011

Robert D. Blue Scholarship application deadline.

July 1, 2011

Priority FAFSA deadline for Iowa scholarships and grants (Iowa Tuition Grant, Iowa Vocational-Technical Tuition Grant, Iowa Grant and Barber and Cosmetology Arts and Sciences Tuition Grant).

Contents



3 CAREERS & COLLEGE
Start your story with a plan.

4 WHAT'S YOUR MAJOR?
Identify college majors that fit your career goals.

5 TRAINING & DEGREES
Explore the different types of degrees and training opportunities available.

6 CHOOSING A COLLEGE
How to find your perfect fit.

7 SUPERSIZE YOUR SCORE
Get free ACT & SAT test prep!

8 THE FRESHMAN 15
15 college must-haves!

9 FINDING FUNDS
Make sure to do these four financial aid tasks.

10 FILING THE FAFSA
What you need to know.

11 REVIEW YOUR SAR
Understanding your Student Aid Report.

13 REVIEW YOUR AID OFFERS
Understanding award letters.

Student Loans



14 SCHOLARSHIPS & GRANTS
Cash in on free money.

18 STUDENT LOANS
Know before you owe!

21 LOAN FORGIVENESS
Reduce student loan debt.

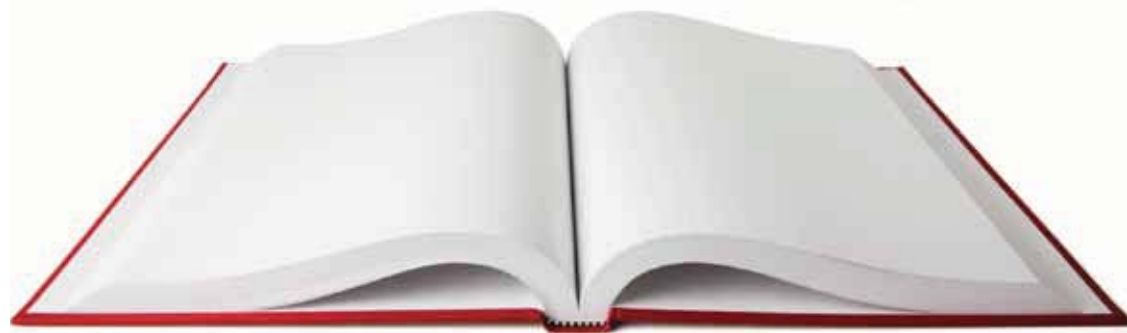
23 TRANSFER STUDENTS
Make a smooth transition.

24 STUDENTS WITH DISABILITIES
Services and resources.

25 COMMON MAJORS

27 MAP OF IOWA INSTITUTIONS

29 GET THE 4-1-1
Fast facts on Iowa's colleges and universities.



Your story is up to you.

Imagine that. Until now, a lot has been decided for you. But going forward, you get to decide your future. Each day is a blank page and you get to choose how to fill it. **Your page - your story.** What do you want to learn? Who do you want to be? Where do you want to go?

Make it the best story you can imagine.




START WITH A PLAN

Your Story Starts with a Plan

The blank page can seem intimidating at first, but keep in mind that every story - even yours - begins with a plan. Start by asking yourself some questions. What activities do you enjoy? Where do you like to spend your time? Who do you enjoy having around? By defining the activities, places and people that make you happy, you will develop an idea for the type of work environment that best suits you.


Your experiences are tools that will be handy when seeking an ideal career. Make a list of the things you have done, such as hobbies, favorite school subjects and talents. It is also helpful to note which experiences you really enjoyed. Don't limit yourself based on your level of success or ability. There are a variety of skill levels required in all career fields.

Selecting a college or university and deciding on a major are important decisions. These decisions are easier to make if you have a career plan in mind. Career development programs, like www.IHaveaPlanIowa.gov, can help you discover how your interests and activities can be applied to the various careers available and identify colleges and universities that offer programs and training needed for each possible career.



Explore Your Interests, Skills & Values

Access www.IHaveaPlanIowa.gov and complete the Interest Profiler, Basic Skills Survey and Work Values Sorter to help you focus on college majors and careers that are based on your individual interests, values and skills.



I HAVE A PLAN IOWA™

IHaveaPlanIowa.gov is a free, web-based tool to help you plan for high school, college and your career. Because it is web-based, all information accessed on I Have a Plan Iowa™ can be saved to an online portfolio. Create your online account at www.IHaveaPlanIowa.gov to do the following:

- Learn about yourself.
- Match your interests, values and skills to a career.
- Find education and training programs.
- Prepare for the ACT and SAT.
- Explore Iowa's colleges and universities.
- Research financial aid options.
- Search for scholarships.
- Apply for State of Iowa scholarships and grants.
- Track your activities online.

Once you have an idea of a career path, we encourage you to explore the Iowa colleges and universities that offer the programs that will help you achieve your goal.



i have a plan
IOWA



WHAT'S YOUR MAJOR

If you are not sure what to major in, you are not alone. Many college students change their major at least once during their time at college. You will be more likely to select a major that is the right fit if your decision is based on the planning you have already started for your future career and the experiences you have had up to this point.

Major [mey-jer] - noun

Education -

- a. a subject or field of study chosen by a student to represent his or her principal interest and upon which a large share of his other efforts are concentrated: *History was my major at college.*

definition from www.dictionary.com



Your Interests

The steps you have taken to find a career will help you find the major that is right for you. I Have A Plan Iowa™ is a great resource for finding majors relating to your interests. It also will help you find colleges that offer the majors you find interesting. Remember, you can set up your free account by going to www.IHaveAPlanIowa.gov. You also can explore websites and course catalogs of colleges and universities you are considering to see if majors are offered relating to your interest areas. This may help you make your final decision as to what college you will attend.

Explore the Subject

Start exploring by taking classes related to your interests. This is a good way to familiarize yourself with a specific major and determine if you have enough of an interest to pursue a related career. Do not be discouraged if you find you are not as interested in a topic as you thought. Selecting the right major is a learning experience and may be determined through trial and error.

How Your Major Becomes a Degree

If you are still interested in the major after taking a class or two, do your homework to determine what the degree requirements will entail. The academic department for the major is an excellent resource. You can obtain information about internships, careers and graduation requirements, as well as speak to an advisor or counselor about your plans. A visit to the department may even result in scholarship opportunities. Research things you will need to know such as what classes will be required for this major, what sorts of things will be covered in these classes and what will be expected of you.



College Programs and Majors

Pages 25 and 26 of this guide include a chart of common majors offered by Iowa colleges and universities.



TYPES OF TRAINING & DEGREES

There are many different training and education choices beyond high school. The type of education or training you need will depend on your career choice. See the descriptions and examples below to help you decide which program is right for you.

Apprenticeships

An apprenticeship is a training program that combines classroom studies with on-the-job training supervised by a trade professional where you earn wages while you learn a skilled profession in a specific field. It can take several years to become fully trained in the occupation you choose. Examples of possible careers requiring an apprenticeship include electrician, plumber, and carpenter.

Certificates and Diplomas

A certificate or diploma program focuses on a particular skill needed for a specific career and can generally be earned in two years or less at a community college, career/technical/business college or some four-year colleges. Examples of possible careers requiring a certificate or diploma include paralegal, cosmetologist, welder, chef, certified nursing assistant and radiological technician.

Associate Degree

Associate degrees can usually be earned in two years (sometimes less) at any community college or some career/technical/business colleges and four-year colleges. Some associate degrees can be applied toward a bachelor's degree at a four-year college or university. Examples of possible careers requiring an associate degree include dental hygienist, administrative assistant, registered nurse, veterinary technician and auto mechanic.

Bachelor's Degree

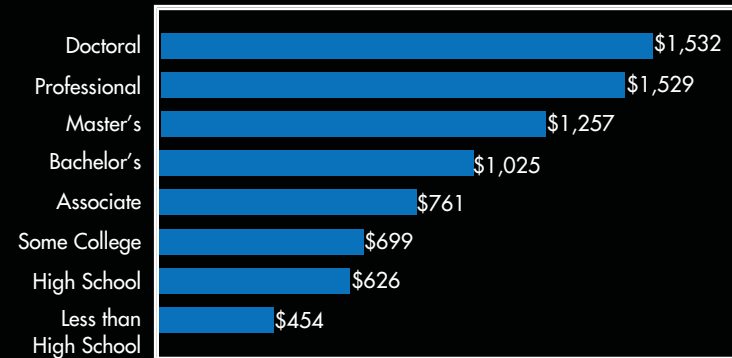
A bachelor's degree, or undergraduate degree, typically takes at least four years to complete at any four-year college or university. Careers that require a bachelor's degree include teacher, engineer, accountant, dietitian and social worker.

Advanced Degree

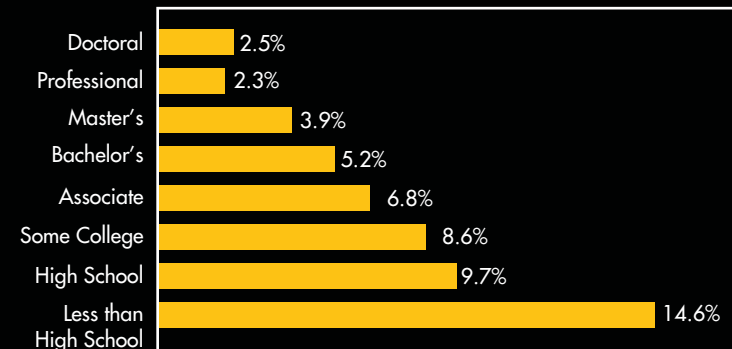
After obtaining a bachelor's degree, you may choose to pursue an advanced degree such as a master's, doctoral or professional degree. The time it takes to complete an advanced degree can be two years or more, based on the type of degree you choose. Examples of professions that require an advanced degree include dentist, lawyer, veterinarian, pharmacist, psychologist, college professor and doctor.

Higher Education Pays

Overall, the more education you attain, the more likely you will find employment opportunities with higher earning potential.



Median Weekly Earnings in 2009 (Dollars)



Unemployment Rate in 2009 (Percent)

Source: Bureau of Labor Statistics, Current Population Survey. Data are 2009 annual averages for persons age 25 and over. Earnings are for full-time wage and salary workers.



Find program descriptions, degrees required and colleges that offer each program at IHaveaPlanIowa.gov. Complete the Career Cluster survey to match your interests and personal qualities to different careers.

CHOOSING A COLLEGE

Choosing where you want to go to college is an extremely personal decision. A good starting point is to identify colleges that offer programs and majors related to your career interests.

Rock Your College Visits!

Take a campus tour, check out different housing options and tour areas surrounding campus.

Schedule a visit with the financial aid office to discuss costs and financing options.

Get a feel for college life by eating in a campus cafeteria and staying overnight in campus housing.

Sit in on a class on a subject that interests you.

Talk to a professor in your field of study or major.

Ask current students about campus life and what they do on the weekends.

Read the campus newspaper.

Visit with advisors and members of activities and clubs that interest you.

Determine if the campus provides wireless access and plenty of places for you to plug in your computer.



See if you can imagine yourself at the college...



Use www.IHaveAPlanIowa.gov to help you document your campus visits. You can track your actions and add campus visit notes for each college you have saved in your portfolio.

Factors in Choosing a College:

- Cost
- Location
- Size/enrollment
- Academic programs and majors
- School expertise
- Diversity
- Average ACT score
- Extracurricular activities/campus life
- Support services
- Safety and security
- Type of learning environment
- Faculty/student ratio
- Housing options
- Graduation rates
- Job placement rates

Compile a List of Possible Colleges and Universities

Start by putting together a list of colleges that offer the major(s) that interest you and that meet other factors you find important. I Have A Plan Iowa™ is a great resource for exploring colleges. School exploration tools at www.IHaveAPlanIowa.gov can help you find colleges that match characteristics you find important and can also provide a side-by-side comparison of schools for you to see how they stack up.

Research Colleges and Universities on Your List

Gather information about each college by talking to your school counselor, attending college fairs and visiting college websites. Many colleges offer virtual campus tours so you can get an idea of the look and feel from your computer.

Schedule Campus Visits

Visiting colleges you are interested in attending is important because it will help you determine whether the college is a good fit both socially and academically. If possible, try to visit when classes are in session.

Prepare specific questions to ask at each college and make a list of what college characteristics are important to you. The tips in the box on the left provide a starting point to help you make the most of your campus visits. Contact a college admissions representative to schedule your visit.

Apply to Colleges and Universities that Make the Cut

The research you have done and the college visits you have made will help you determine which colleges you are interested in attending. Make sure to find out the application requirements and deadlines for each college before you apply. Some colleges may require essays, personal interviews, or letters of recommendation. Know in advance so you have plenty of time to prepare. Make sure you apply to at least one college where you are confident you will be accepted.

PREPARE FOR THE SAT® & ACT®

Supersize Your Score!

Don't get intimidated by college admissions tests. Whether your test is next week or next year, you can boost your test taking confidence today by using the FREE test prep resources at www.IHaveaPlanIowa.gov!

I Have a Plan Iowa™ Free Test Prep includes:

- ACT® - strengthen your knowledge of the four subject areas: English, math, reading, and science reasoning.
- SAT® - build and/or refresh your skills for the exam's verbal and math sections.
- GRE® - (used by many graduate and business schools to evaluate readiness for graduate level work.) Test your core abilities in verbal, quantitative, and analytical reasoning.
- Vocabulary Builder - expand and improve your word power.

I Have a Plan Iowa™ Test Prep Adapts to Your Skill Level

The ACT® and SAT® test prep provides you with personal tutoring and immediate feedback on every incorrect answer. It automatically adapts to your personal skill level and can even remind you via e-mail of what is best to study next! Each time you log on you will be taken to your own homepage that tracks how much you've studied and how well you are doing.

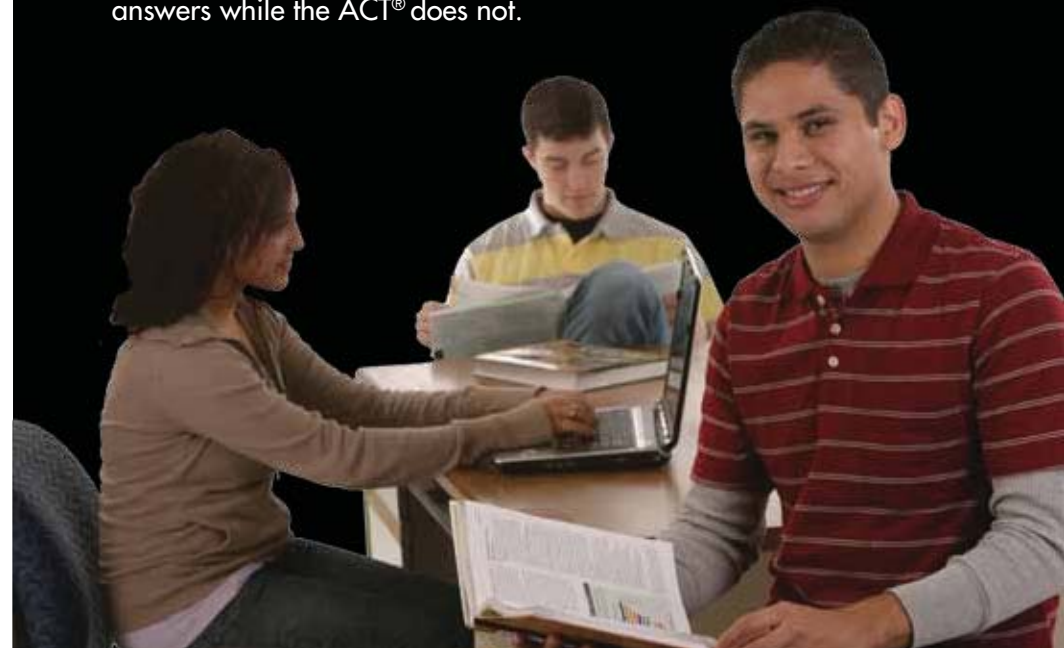
Get a Coach

You can designate someone to be your test prep coach in I Have a Plan Iowa™. Your coach can be a parent, teacher, older sibling, friend, or anyone with whom you have a good relationship. Your coach will be able to see your test prep progress to provide you with extra support and motivation.

ACT® or SAT® - What are the Differences?

While the ACT® and SAT® are both standardized college admissions tests accepted by most colleges and universities, there are differences. Check to see if the colleges you are interested in attending prefer one test over the other. If either test is accepted, keep in mind the following differences when determining which test is best suited to your skills and strengths.

- The ACT® tests students on subject matter covered in high school while the SAT® is considered an aptitude test that measures reasoning or critical thinking.
- The ACT® has four sections: English, Mathematics, Reading and Science. The SAT® has three sections: Critical Reading, Mathematics and Writing.
- The SAT® has a required writing section. The writing section is optional in the ACT®.
- While both the ACT® and SAT® primarily are multiple choice tests (except for the writing section), the SAT® has a math section that requires students to produce their own answers.
- The SAT® penalizes students slightly for wrong multiple-choice answers while the ACT® does not.



FRESHMAN 15

We are not talking about weight. This "Freshman 15" list contains 15 college must-have items that you don't want to leave home without!

1. Power Strips and Adaptors

There are never enough outlets for all of your necessities (computer, TV, cell, iPod...). The adaptors will come in handy if your room doesn't have 3-pronged outlets.

2. Robe

You may not use a robe at home, but unless you are an exhibitionist it will come in handy when dashing from your room to a shared bathroom to take a shower.

3. Flip Flops

Do you really want to walk barefoot down the hall or stand in a shower that has been used by the masses? Flip flops are a must!

4. Shower Caddy

If you have to share a bathroom, a shower caddy makes it so much easier to haul your shampoo, conditioner, soap, shaving supplies, toothbrush, and all other essentials back and forth.

5. Umbrella

If you go to college in Iowa, you will need one unless you want to drip dry while you sit in class.

6. Snow Boots

Unless you enjoy frostbite, snow boots are a must.

7. Tool Kit

A tool kit is extremely useful when putting together boxed furniture or fixing minor problems in your room.

8. Dry Erase Board

Hang one on your door for you and roommates and hall mates to leave messages while you are out.

9. Travel Mug/Water Bottle

Face it now - college students are broke. You can save money and the environment by carrying your own water or coffee.

10. Can Opener

You will be thankful you brought this when you want a can of Spaghetti-Os at 2:00 a.m.

11. Door Stop

These are great when you need to prop your door open when moving, for ventilation, or to get to know other students in the hall. Who is brave enough to knock on a closed door just to say hello?

12. Sewing Kit

Mom is not going to be there to sew a button on your shirt.

13. Health Insurance Card

If you get sick you will need to take yourself to the doctor and you will need your health insurance card.

14. Drying Rack

When it comes to paying to dry your clothes or getting a Mountain Dew, the Mountain Dew will win every time.

15. Febreze

Tiny room, mounds of dirty clothes, bed sheets that haven't been washed in weeks—yes, Febreze is necessary.



FINDING FUNDS TO PAY FOR YOUR EDUCATION

Paying for college does not have to be financially overwhelming. There are many different ways for families to pay for a college education and the financial aid process is not as complicated as most people think. In fact, most students attending Iowa colleges and universities receive some form of financial assistance. To be considered for the most financial aid programs, make sure to do these four financial aid tasks.

Submit the Free Application for Federal Student Aid (FAFSA)

To qualify for most financial aid programs, you must complete and submit a FAFSA. The fastest, easiest, and most accurate way to apply is online at www.fafsa.gov. The FAFSA will ask information about your finances, your family's finances, and your college plans. Go to page 10 for more information on completing the FAFSA.



Never Pay to File the FAFSA

There are no fees to complete or file the FAFSA. If you have questions, get free help by calling Iowa College Aid at 877-272-4456, the Iowa College Access Network (ICAN) at 877-272-4692, or call the financial aid office at any college or university.



Submit the Iowa Financial Aid Application

The Iowa Financial Aid Application allows you to apply for multiple state-administered aid programs with one application. It can be accessed by clicking the application button at www.IHaveaPlanIowa.gov.



More information on state scholarships and grants is available on page 14.

Apply for College Admission

Applying for college admission is not the same as applying for financial aid - you need to do both. After completing the FAFSA and admissions applications for the colleges and universities that interest you most, each college you list on your FAFSA will send you an award letter. Your award letter may be electronic or paper and it will describe the financial aid package each college can offer.

More information on reviewing award letters can be found on page 13.

Seek & Apply for Scholarships

Start looking for scholarship opportunities during your junior year of high school. High school counselors are excellent resources for local scholarship information, as are libraries and college and university financial aid administrators.

Reputable education organizations will NOT charge fees for scholarship searches. You can access the free Scholarship Finder at www.IHaveaPlanIowa.gov to search for scholarships that match your skills and accomplishments.



Practice a College Application

Practice makes perfect - so take the opportunity to practice completing a college application at www.IHaveaPlanIowa.gov!

Keys to Getting Scholarships

- Apply early (start looking your junior year of high school).
- Compile a personal inventory of your academic, extracurricular and career plans.
- Check with your high school counselor about the availability of local scholarships and programs for students graduating from your high school.
- Check into scholarship opportunities through community foundations, civic or fraternal organizations, or through a corporation or business with a presence in your community.
- Use the Scholarship Finder at www.IHaveaPlanIowa.gov to find scholarships that match your skills and accomplishments.
- Follow application directions precisely; **DO NOT MISS DEADLINES!**
- Line up letters of recommendation from references who can characterize your abilities.
- Do a thorough, thoughtful job on all required essays.

FILING THE FAFSA

The Free Application for Federal Student Aid (FAFSA) serves as the application for federal programs as well as for many state programs and financial aid from colleges and universities. Even if you are not sure that you will need financial aid, file it anyway - it's free. Just about every family is eligible for some form of financial aid - grants, scholarships, work-study or student loans. To determine your eligibility, you must complete the FAFSA.

Who Completes the FAFSA?

Whether you are a dependent or independent student will determine if you need to include your parent(s) financial information on the FAFSA. If you meet one of the conditions below, you are considered to be an independent student and do not need to provide parental information.

- 24 years old or older
- Graduate student
- Married
- Provide more than 50% financial support for dependents
- Veteran of the U.S. armed forces
- Currently serve on active duty in the armed forces for other than training purposes
- Unaccompanied youth who is homeless or at risk of being homeless
- Emancipated minor
- Since turning 13, you were in foster care, a dependent or ward of the court, or both your parents were deceased

If you do not meet any of the independent student criteria, parental information **must** be provided on the FAFSA. If you feel you have special circumstances that inhibit your ability to provide parental information on the FAFSA such as the inability to locate your parents; your parents are incarcerated; you left home due to an abusive situation; or your parents refuse to provide their information and refuse to provide you with any financial support; you should contact the financial aid office at the college you plan to attend to discuss your family situation.

Where to Get your FAFSA

The easiest and fastest way to complete the FAFSA is online at www.FAFSA.gov. In contrast to a paper copy, the online form displays only the data entry fields you need to complete. It is available online after January 1 for the upcoming academic year.

You may access a PDF version of the FAFSA by visiting http://federalstudentaid.ed.gov/fafsa_options.html. You will need to print, complete, and mail the PDF form for processing. To have a paper FAFSA sent to you call 800-4-FEDAID (800-433-3243).

FAFSA Deadlines

Your completed FAFSA should be submitted as soon after January 1 as possible to receive financial aid in the next academic year.

July 1 is the application deadline for many grants and scholarships funded by the State of Iowa. Page 15 provides a chart of application deadlines for all programs administered by Iowa College Aid. In addition, most college and university financial aid offices have priority deadlines as early as February or March. Some aid is limited and might not be available if you miss the priority deadline.

FAFSA Filing Tips

- Gather the following financial documents for you and your parents:
 - Federal Income Tax Returns
 - W-2 Forms
 - Records of Untaxed Benefits Received
 - Current Bank Statements
 - Current Business and Farm Records, as well as other Savings and Investments
 - Alien Registration or Permanent Resident Card (if you are not a U.S. citizen)
- Be sure your name matches your name as it appears on your Social Security Card.
- Enter up to 10 colleges or universities on your FAFSA that you are considering for enrollment. This ensures that the report from your FAFSA is shared with campus officials who will evaluate your eligibility for federal, state and institutional financial aid.
- E-sign your FAFSA using your Federal Student Aid PIN for fastest processing. You and your parents may apply for a PIN at www.pin.ed.gov.
- After submitting your FAFSA, print out the confirmation page, which displays the exact date and time the form was received.



FAFSA Filing Deadlines

The Directory of Iowa Colleges & Universities, starting on page 29, includes the priority deadline for FAFSA filing for each Iowa college and university.



REVIEW YOUR STUDENT AID REPORT

Your Student Aid Report (SAR)

If you filed your FAFSA electronically and included your email address, you will receive an email that allows you access to your electronic SAR within a few days of submitting your completed FAFSA. (SAR results will take approximately 3 weeks if you filed a paper FAFSA.) The SAR contains Expected Family Contribution (EFC) information, as well as initial information about your Pell Grant eligibility. Any college or university that you listed on your FAFSA will receive an electronic copy of your SAR once your application has been processed. Colleges and universities use your EFC to determine the amount of federal grants, loans, work-study and other financial aid programs for which you may be eligible.

Your Expected Family Contribution (EFC)

The U.S. Department of Education uses your FAFSA to calculate your Expected Family Contribution (EFC), the figure that is used to determine your financial aid eligibility.

Variables that determine your EFC include income and net worth for you and your parents, family size, age of older parent, state and federal taxes, and number of family members attending college. You may use the EFC calculator at www.IHaveaPlanIowa.gov to estimate your family's EFC (the estimate is unofficial).

Your EFC may change from year to year as your family size, number of students in college or income changes. Even if you feel that your family's income will be too high to receive financial aid, you should still complete the FAFSA so colleges and universities know you desire other forms of financial assistance. Many scholarships and loans are awarded to students who are not eligible for need-based financial assistance. It is very important that you file a FAFSA each year.

SAMPLE EFC CALCULATION FOR A DEPENDENT STUDENT:*

Parents' combined income	\$60,000
Student's income	\$ 5,000
Parents' assets.....	\$10,000
Student's assets	\$ 950
Age of older parent.....	60
Family size (parents & children)	4
Number in college	1
Parents' contribution	\$ 4,955
Student's contribution	\$ 883
Expected Family Contribution per year (EFC)	\$ 5,838

*This illustrates an approximation of the Federal EFC figure that is calculated when you file a FAFSA.



FAFSA4caster will help you get an early start on the financial aid process by:

- Providing you an early estimate of your EFC.
- Giving you an experience similar to the FAFSA on the Web.
- Allowing you to transfer your data to FAFSA on the Web when you are ready to apply.
- Allowing you to apply for your Federal Student Aid PIN.
- Increasing your knowledge about the financial aid process.



College Cost of Attendance (COA)

Each college and university has its own cost of attendance (COA) that includes educational expenses, or basically everything you need to go to school and live, within reason. The COA is more than just the amount charged for tuition. It includes estimated costs for books, supplies, fees, housing, food, transportation and living expenses for the academic year.

The cost of attendance is determined by the college or university and will vary by factors such as:

- type of school
- location
- major course of study
- whether you are enrolled on a full-time or part-time basis
- whether you live on or off campus

$$\begin{array}{r} \text{Your Cost of Attendance} \\ - \text{Your Expected Family Contribution} \\ \hline = \text{Your Financial Need} \end{array}$$

Financial Need vs. College Costs

Each college or university to which you are accepted, and you listed on your FAFSA, will determine your financial need at their respective institution. Your Financial Need is equal to the Cost of Attendance (COA), minus your Expected Family Contribution (EFC).

Your EFC will remain the same in a given year (unless an unusual family situation arises), regardless of which college or university you attend. The amount of financial aid you may receive cannot exceed the total cost of attendance at each college or university. Your financial need will fluctuate, however, depending on the college or university that you attend. This is shown in the sample financial aid worksheet, located below, that uses the EFC from the

example on page 11 and applies the data to the costs of Colleges A, B and C.

SAMPLE FINANCIAL AID WORKSHEET

The expenses that make up the cost of attendance in this example are based on full-time attendance for a full academic year, August–May. These figures reflect estimated costs for Iowa colleges and universities. The specific college costs for the 2010-11 academic year are listed in the profiles for each college and university beginning on page 29. Use this example to gain a better understanding of how colleges and universities calculate financial need.

SAMPLE FINANCIAL AID WORKSHEET (Financial Need in relation to Cost of Attendance)				
College/University costs	School A	School B	School C	Your Choice
Tuition and fees	\$ 3,691	\$ 6,997	\$ 26,960	\$
Room and board	\$ 4,806	\$ 7,472	\$ 8,130	\$
Books and supplies	\$ 834	\$ 1,014	\$ 900	\$
Transportation and personal	\$ 5,304	\$ 3,360	\$ 3,500	\$
Cost of attendance	\$ 14,635	\$ 18,843	\$ 39,490	\$
Less EFC*	-\$ 5,838	-\$ 5,838	-\$ 5,838	-\$
FINANCIAL NEED:	\$ 8,797	\$ 13,005	\$ 33,652	\$

*FAFSA results determine EFC

The total amount of financial aid that a student may receive from all sources cannot exceed the cost of attendance.

AWARD LETTERS REVIEW AID OFFERS

Evaluate Your Financial Aid Offers

Upon admittance, each college or university specified on your FAFSA will present you with an award letter describing the financial aid it can offer. This award letter will include the state and federal aid you are eligible to receive, as well as college-specific financial aid. It is likely that your package also will include one or more types of student loans for you to consider.

Evaluate the aid offered in the award letter(s). The Financial Aid Award Evaluator, one of the interactive calculators available in the student section of the Iowa College Aid website, www.IowaCollegeAid.gov, can help you compare award letters from different colleges. When comparing aid packages from more than one college, consider how much assistance is from scholarships and grants (which do not have to be repaid) and how much is from loan support (which must be repaid).

Keep in mind that if you are offered a student loan, you do not have to borrow the full amount offered to you. Accepting a student loan means accepting the responsibility of repaying it. You may use the Student Loans over Projected Earnings (SLOPE) calculator at www.IHaveaPlanIowa.gov to calculate your estimated monthly payment for student loans and compare it to your projected earnings for your career choice. The results will indicate how much you can borrow comfortably based upon your career.



Award Letter Deadlines

To accept the financial aid package offered by a college or university, follow all instructions. This is likely to involve signing and returning documents by a specified deadline. Don't miss deadlines for accepting aid or the funds could be given to other students. Talk to the financial aid office at the college or university if there is an unusual circumstance that delays your response.



CASH IN ON FREE MONEY

STATE SCHOLARSHIPS & GRANTS

The State of Iowa appropriates funding for several grant programs to provide families with access to and a choice of higher education opportunities. Students who receive Iowa-funded grants and scholarships must be Iowa residents and attend an Iowa college or university. Federal grants and student loans are awarded to both Iowa resident and non-resident students. Grants do not have to be repaid and can significantly reduce college expenses. The chart on page 15 specifies the application requirements for each program administered by Iowa College Aid.

Barber and Cosmetology Arts and Sciences Tuition Grant*

The Barber and Cosmetology Arts and Sciences Tuition Grant is available to assist Iowa residents enrolled in a course of study at one of Iowa's eligible licensed barber schools or schools of cosmetology arts and sciences. Priority is given to students with the greatest financial need. The maximum grant award is \$1,200 per year.

Iowa Tuition Grant

Iowa Tuition Grants are awarded to Iowa students enrolled at Iowa's eligible private colleges and universities. Priority is given to applicants with the greatest financial need. Nearly 16,600 undergraduate students receive these grants each year. The maximum grant award for a student attending a not-for-profit college or university is \$3,700 per year and \$1,560 per year for a student attending a for-profit college or university. The grant is renewable for up to four years of full-time undergraduate study and the maximum award amounts vary by year. Part-time students may be eligible for adjusted amounts.

Iowa Vocational-Technical Tuition Grant

Vocational-Technical Tuition Grants assist Iowa residents in vocational-technical or career option programs at Iowa community colleges. The maximum grant is \$1,200 per year for up to two years of education. The amount is adjusted for part-time study.

*Each eligible college or university is given an allocation with which it awards funds to students in priority order. If eligible, you will be awarded these funds by your college financial aid office.

Iowa Grant*

The Iowa Grant is available to assist Iowa residents attending any accredited public or private college or university in Iowa. Priority is given to students with the greatest financial need. The maximum grant is \$1,000 per year for up to four years of undergraduate study. The amount is adjusted for part-time study.

Iowa National Guard Educational Assistance Program (NGEAP)

The Iowa National Guard Educational Assistance Program provides annual awards to Iowa National Guard members who attend eligible Iowa colleges and universities. Maximum individual awards cannot exceed the average resident tuition rate at Iowa Regent Universities. For 2010-2011, the average resident tuition rate for full-time students at Iowa Regent Universities is \$7,141. The maximum award may be set lower in order to serve more soldiers. The Iowa Adjutant General determines eligibility. For 2010-2011 award amounts, please check the Iowa National Guard website at www.IowaNationalGuard.com/education/tuitionassistance.htm.

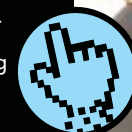
All Iowa Opportunity Foster Care Grant and Education and Training Voucher (ETV) Programs

The All Iowa Opportunity Foster Care Grant and Education and Training Voucher (ETV) programs provide grants to students who are in foster care, were in foster care, were adopted from foster care after turning 16 or have graduated from a state training school and who plan to attend eligible colleges or universities. The grant programs cover educational costs up to \$7,330 per year for the Foster Care Grant and \$5,000 per year for the ETV program, and may be used for a range of education or career training programs. The grants are renewable for programs that extend beyond one year.



Check Your Eligibility for State Financial Aid

The Eligibility Wizard in the Iowa Financial Aid Application will allow you to receive estimated information on your eligibility for state financial aid programs by answering less than 10 questions! Access the Iowa Financial Aid Application online at www.IHaveAPlanIowa.gov



STATE SCHOLARSHIPS & GRANTS, CONTINUED

All Iowa Opportunity Scholarship

The All Iowa Opportunity Scholarship is a need-based, state-funded program available to assist Iowa students who have a minimum high school GPA of 2.5 on a 4.0 scale and who begin enrollment at an eligible Iowa college or university within two academic years of graduating from high school. The maximum award amount for the 2010-2011 academic year is \$7,141¹ at eligible Iowa four year colleges and universities and \$3,780² for students attending eligible Iowa community colleges. Priority will be given to students who participated in the Federal TRIO Programs, graduates from alternative high schools and to homeless youth.

All Iowa Opportunity Scholarships are renewable for a second year if the student is attending an Iowa community college.

Robert C. Byrd Honors Scholarship

The Byrd Honors Scholarship Program provides renewable scholarships of up to \$1,500 per year to Iowa high school seniors who demonstrate outstanding academic achievement. The competitive selection is determined by academic officials. Recipients may attend any accredited postsecondary institution in the United States. Past recipients had ACT scores of 31 or above, grade point averages of 3.92, and were ranked in the top 10% of their class.

Robert D. Blue Scholarship

The Robert D. Blue Scholarship, named after former Iowa Governor Robert D. Blue, provides scholarships ranging from \$500 to \$1,000 to Iowa students who demonstrate literary and scholastic ability; exhibit qualities of truth, courage and fellowship; and display moral force of character. Applicants can be current high school seniors, or students already enrolled at Iowa colleges or universities.

Governor Terry E. Branstad Iowa State Fair Scholarship

This scholarship, named after former Iowa Governor Terry E. Branstad, recognizes outstanding high school seniors who have actively participated in the Iowa State Fair. Up to four scholarships ranging from \$500 to \$1,000 are awarded each year to Iowa students who enroll at Iowa colleges or universities.

Program	Start of Application	FAFSA Required	Iowa Financial Aid Application Required	Priority Application Deadline	Final Application Deadline
Iowa Tuition Grant	January 1	Yes	No	None	July 1
Iowa Vocational Technical Tuition Grant	January 1	Yes	No	None	July 1
All Iowa Opportunity Scholarship	January 1	Yes	Yes	March 1	July 1
All Iowa Opportunity Foster Care Grant	January 1	Yes	Yes	March 1	July 1
Education Training Voucher	January 1	Yes	Yes	March 1	July 1
Governor Terry E. Branstad State Fair Scholarship	January 1	Yes	Yes	None	May 1
Robert C. Byrd Honors Scholarship	January 1	No	Yes	None	May 1
Iowa National Guard	January 1	No	Yes	None	August 31
Iowa Grant*	January 1	Yes	No	None	None
Iowa Barber and Cosmetology Arts and Sciences Tuition Grant*	January 1	Yes	No	None	July 1

*Each eligible college or university is given an allocation with which it awards funds to students in priority order. If eligible, you will be awarded these funds by your college financial aid office.

1 Maximum individual awards cannot exceed the average resident tuition rate at Iowa Regent Universities.

2 Maximum individual awards cannot exceed the average tuition and fees at Iowa's community colleges.

FEDERAL GRANTS

Federal grants are awarded to both Iowa resident and non-resident students. Eligible students can receive these federal grants for attendance at any post-secondary educational institution participating in the program. Complete and submit a FAFSA at www.fafsa.gov as soon as possible after January 1 to apply for federal financial aid programs.

Pell Grants

Pell Grants are funded by the federal government to assist the neediest undergraduate students. For many students, Pell Grants provide a financial aid foundation to which aid from other federal and non-federal sources is added. The maximum grant is \$5,550. The average Pell Grant given to Iowa students last year was \$2,464. Data from your FAFSA determines Pell Grant eligibility.

Academic Competitiveness Grants (ACG)

Academic Competitiveness Grants (ACG) are available to Pell-eligible students who successfully completed recognized rigorous high school programs. The ACG program will be discontinued after the 2010-2011 academic year.

An eligible student may receive an Academic Competitiveness Grant of up to \$750 for the first academic year of study and up to \$1,300 for the second academic year of study. More information on the ACG and recognized rigorous high school programs is available at www.iowaCollegeAid.gov.

National SMART Grants

National Science and Mathematics Access to Retain Talent Grants (SMART Grants) are available to students who pursue college majors that are in high demand, such as math, science, technology, engineering and foreign languages critical to the national security of the United States and other high-need areas designated by individual states. The National SMART Grant program will be discontinued after the 2010-2011 academic year.

An eligible student may receive a National SMART Grant of up to \$4,000 for each of the third, fourth and, if applicable, fifth academic years of study. More information on the National SMART grant and high-need fields of study is available at www.iowaCollegeAid.gov.

Supplemental Educational Opportunity Grants (SEOG)

Federal Supplemental Educational Opportunity Grants (SEOG) are based on financial need as determined by the results of the FAFSA and may be used at any college or university. Students with exceptional financial need who are eligible for Pell Grants are given priority. Eligible recipients may receive between \$100 and \$4,000 per year depending on when they apply, financial need, the funding at the college or university, and the policies at college or university financial aid offices.

Teacher Education Assistance for College and Higher Education Grants (TEACH Grant)

Teacher Education Assistance for College and Higher Education (TEACH) Grants were created to help all levels of collegiate students enrolled in teaching programs pay for their college education. In exchange for receiving a TEACH Grant, recipients must agree to serve as full-time teachers in a high-need field in a public or private elementary or secondary school that serves low-income students. These grants are available to eligible undergraduate, post-baccalaureate and graduate students for a maximum amount of \$4,000 per year. The award amount is reduced for students enrolled on a part-time basis. Academic standards of at least a 3.25 GPA or a score above the 75th percentile on at least one standardized admissions test battery apply to all recipients, with the exception of graduate degree students who are current teachers or retirees from another occupation who possess expertise in a field where there is a teacher shortage, or current or former teachers pursuing a high-quality alternative certification such as Teach for America. More information on TEACH grants, including high-need areas and eligible low-income schools is available in the scholarships & grants section of our website, www.iowaCollegeAid.gov.



TEACH Grant Teaching Requirements

If you do not fulfill the required teaching service, your TEACH Grants will become unsubsidized Direct Stafford loans that must be repaid to the U.S. Department of Education. In addition, you will be charged interest from the first disbursement date of each grant.



COLLEGE AND UNIVERSITY SCHOLARSHIPS

The college or university you have chosen may provide scholarships or financial awards from its own institutional funds. Often, institutional scholarships are given to recipients who meet specific eligibility requirements related to particular areas of study, academic achievements, outstanding talent, leadership, athletic ability or other criteria. Contact the financial aid office at the college or university you have selected and inquire about institutional scholarships.

PRIVATE SCHOLARSHIPS

Scholarships are available from a variety of sources including businesses, foundations, religious organizations, community groups or fraternal organizations. High school counselors are excellent resources for scholarship information, as are libraries and college and university financial aid administrators.

Internet searches also allow students and families the opportunity to explore a broader pool of scholarship possibilities. Reputable education organizations will NOT charge fees for the scholarship searches they offer. Be wary of questionable claims and avoid fee-for-service offers. You can access the free Scholarship Finder at www.IHaveaPlanIowa.gov to search for scholarships that match your skills and accomplishments.

WORK-STUDY AND PART-TIME EMPLOYMENT

You may decide to pay for some of your college expenses by taking a part-time job. The extra income may mean having to borrow less in student loans. Part-time jobs can include work-study and jobs on and off campus. Work-study provides part-time jobs for undergraduate and graduate students with financial need. If you are eligible for work-study, your college or university will include it as an option for you to consider in your financial aid award letter. Students not eligible for work-study can still opt to work in a part-time job to assist with their college expenses. When seeking a part-time job, keep in mind the following:

- While working teaches financial responsibility and self-discipline, it's important that it doesn't conflict with your primary objective – completing your college education.
- Do not work so many hours that you jeopardize the amount of time you have to study or attend class. Typically, part-time employment will not affect grades if you work 20 hours or less each week.

Take Advantage of Higher Education Tax Benefits

Your family may be able to benefit from higher education tax credits and deductions available to individuals and families who have paid eligible higher education-related expenses during the tax year. More information about these tax benefits is available at www.IowaCollegeAid.gov or by accessing the IRS Publication 970 at www.irs.gov. Be sure to consult a professional tax advisor if you have questions about your eligibility.

- **Student Loan Interest Deduction**
Eligible borrowers may deduct interest paid on student loans (up to a maximum of \$2,500 each year) to reduce the amount of taxable income.
- **The Hope Scholarship Tax Credit**
Eligible taxpayers may claim a credit of up to \$1,800 (\$3,600 for Midwestern disaster areas¹) for the first two years of college for each eligible student to reduce the amount of income tax owed.
- **American Opportunity Tax Credit**
This new tax credit (a modification of the Hope credit) is available for the 2009 and 2010 tax years. Eligible taxpayers may claim a credit of up to \$2,500 for the first four years of college for each eligible student to reduce the amount of income tax owed, and 40% of the credit is refundable for many taxpayers.
- **Lifetime Learning Tax Credit**
Eligible taxpayers may claim a credit of up to \$2,000 (\$4,000 for Midwestern disaster areas¹) per family per tax return for all years of postsecondary education to reduce the amount of income tax owed.
- **Tuition & Fees Deduction**
Eligible taxpayers may deduct up to \$4,000 paid for tuition and fees during the tax year to reduce the amount of taxable income.

¹ Students attending an eligible educational institution in designated counties in the states of Arkansas, Illinois, Iowa, Missouri, Nebraska, or Wisconsin may qualify for the special Midwestern disaster area rules for the Hope or Lifetime Learning Credits, or the Tuition and Fees Deduction. Go to www.IowaCollegeAid.gov for a list of eligible Iowa counties.

KNOW BEFORE YOU OWE

STUDENT LOANS

If you still need money to cover educational expenses after you have exhausted other aid and employment opportunities, student loans are a good option. Just remember, student loan money is for financing your education, not your lifestyle. Student loans are real money that **must be repaid, with interest**, so borrow only what you need.



FEDERAL STAFFORD LOANS

Stafford Loans are federal loans that are provided by the U.S. Department of Education. The financial aid office at your college or university has processes in place to make it efficient for you to complete a student loan application and receive funds that are applied directly to your student account. You must file a FAFSA to receive a Stafford Loan. There are two types of Stafford Loans.

Subsidized Loan – For students who demonstrate financial need (as determined through the FAFSA process). Students do not pay interest on the loan while in school or in grace or deferment periods.

Unsubsidized Loan – Students do not have to demonstrate financial need to qualify. Students will be responsible for paying interest charged throughout the entire life of their loan, even while in school. Interest may be added to the loan (capitalized) if you choose not to make interest payments while in school.

Interest Rate: Stafford Loans first disbursed on or after July 1, 2006, have fixed interest rates. The rates differ based on when the loan is first disbursed, whether the loan is for an undergraduate or graduate student and whether the Stafford Loan is subsidized or unsubsidized.

The chart below outlines the fixed interest rates. The corresponding rate is effective for the entire life of each loan.

Fees: Stafford Loans disbursed on or after July 1, 2010 have a 1% origination fee that is deducted from each loan disbursement.

Disbursement: The U.S. Department of Education disburses the funds directly to the college or university you attend. Expect loan proceeds to be disbursed each academic period.

Repayment: Stafford Loan repayment begins six months after you graduate, withdraw, or drop below half-time enrollment. You have up to 10 years to repay Stafford Loans using a standard repayment plan. Additional repayment plans are available to eligible borrowers to reduce payment amounts and extended repayment terms may be granted to borrowers with larger loan balances.

What is the Limit on What You Can Borrow? The chart on page 19 provides you with the annual loan limits which are set by the federal government and reflect the combined total of subsidized and unsubsidized Stafford Loans.

Federal Stafford Loan Interest Rates

Loans first disbursed:	Undergraduate Subsidized Stafford	Undergraduate Unsubsidized Stafford	Graduate/Professional Sub and Unsub Stafford
On or after July 1, 2006	6.8% fixed	6.8% fixed	6.8% fixed
On or after July 1, 2008	6.0% fixed	6.8% fixed	6.8% fixed
On or after July 1, 2009	5.6% fixed	6.8% fixed	6.8% fixed
On or after July 1, 2010	4.5% fixed	6.8% fixed	6.8% fixed
On or after July 1, 2011	3.4% fixed	6.8% fixed	6.8% fixed
On or after July 1, 2012	6.8% fixed	6.8% fixed	6.8% fixed

(SUBSIDIZED & UNSUBSIDIZED)

FEDERAL STAFFORD LOAN AMOUNTS



Don't Borrow More Than You Need

Refer to our website at www.iowaCollegeAid.gov to view various repayment options and estimate your monthly payment. You will find tools that show you how to pay less in interest while you repay your student loans and build a solid credit record.



Borrower's Academic Level	Annual Amount for a Dependent Student	Annual Amount for an Independent Student*
First year, undergraduate	\$5,500 [subsidized limit is \$3,500]	\$9,500 [subsidized limit is \$3,500]
Second year, undergraduate	\$6,500 [subsidized limit is \$4,500]	\$10,500 [subsidized limit is \$4,500]
Third year and beyond, undergraduate	\$7,500 [subsidized limit is \$5,500]	\$12,500 [subsidized limit is \$5,500]
Graduate/professional program student		\$20,500 [subsidized limit is \$8,500]
	Aggregate	Aggregate
Undergraduate	\$31,000 [subsidized limit is \$23,000]	\$57,500 [subsidized limit is \$23,000]
Graduate/professional program student		\$138,500 [subsidized limit is \$65,500]

* You are considered an independent student (self-supporting) if you meet ONE of the following conditions: age 24 or older, a graduate or professional student, married, a student with legal dependents other than a spouse, veteran of the U.S. armed forces, orphan or ward of the court until age 18, or you are currently serving on active duty in the U.S. armed forces for other than training purposes.



The Downside of Deferring Interest Payments

Deferring interest payments may seem helpful now, but you will have a larger loan balance when you enter repayment (due to interest capitalization). You will save money in the end if you (or your parents) are able to pay the monthly interest charges on your unsubsidized loans while you are in school.



Capitalization [kap-i-tl-uh-zey-shuhn] - noun

- the act of adding unpaid interest to the principal balance of a loan, therefore increasing the total loan balance.

FEDERAL PLUS LOAN SUMMARY

PLUS LOANS

Parent PLUS Loans are available to parents of dependent undergraduate students and Grad PLUS Loans are available to graduate/professional students to pay for educational expenses. They are federally insured and offer attractive deferment and forbearance options. Typically, they are used to pay unmet educational expenses. They may also be used as an alternative to private student loans.



Who May Borrow

- Parents of dependent undergraduate students. (Any natural or adoptive parent, or stepparent married to the student's custodial parent, may apply for a PLUS Loan.) The dependent student must be enrolled at least half time.
- Graduate/Professional students.

PLUS borrowers are subject to credit checks. A PLUS applicant with adverse credit may qualify by attaining a creditworthy endorser. If a Parent PLUS borrower is denied, the dependent undergraduate for whom the loan was applied for is eligible for additional Federal Unsubsidized Stafford Loan amounts.

Interest Rate

Interest rates on Federal PLUS Loans disbursed on or after July 1, 2010 are fixed at 7.9%.

Fees

Federal PLUS Loans have a 4% origination fee that is deducted from each disbursement.

Disbursement: Apply at least six to eight weeks before you need the money. Loan proceeds will be sent directly to the college or university. Expect a portion of your loan to be disbursed each academic term.

Repayment: Repayment begins 60 days after the loan funds are fully disbursed. Parent PLUS borrowers may request postponement of repayment while the student for whom the loan was borrowed is enrolled at least half time and for six months thereafter. In-school deferment is also available to postpone payment for Grad PLUS borrowers who are enrolled at least half time and for six months thereafter. Borrowers for both the Parent PLUS Loan and Grad PLUS Loan have up to 10 years to repay the loan, with a minimum annual payment total amount of \$600 (\$50 per month). Additional repayment plans are available to eligible borrowers to reduce payment amounts and extended repayment terms may be granted to borrowers with larger loan balances.

Loan Limits: There is no annual or aggregate limit. A borrower may request an amount equal to the cost of attendance, minus any financial aid the student receives.

Did you know? Many parents use Parent PLUS Loans instead of private loans to pay unmet educational expenses. Students whose parents take responsibility for financing a portion of their college education are better prepared for loan repayment upon graduation. Many experts recommend that student loan payments not exceed 8% of income. Students who borrow \$26,000, the average student loan debt for students graduating from a four-year Iowa college or university, would need to earn at least \$43,350 to stay within this recommendation. Parents can help their students from being overwhelmed by too much debt by borrowing Federal Parent PLUS Loans.

OTHER TYPES OF STUDENT LOANS

FEDERAL PERKINS LOANS

A Perkins Loan is based on financial need and is awarded and borrowed directly from your college or university. It is offered at a fixed interest rate of 5%, and no interest accrues until repayment. Limited federal funding is available for Perkins Loans and not all colleges and universities participate in this program. Repayment begins nine months after you graduate, leave school or drop below half-time enrollment.

PRIVATE LOANS

Private loans are available when additional funding is needed to bridge the gap between the cost of education and other sources of financial aid. You should only use private loans as a **last resort** after all other federal loan options are exhausted and if your parents do not utilize the Parent PLUS Loan. Discuss the Federal Parent PLUS Loan with your parents before making the decision to borrow a private loan. PLUS Loans are generally less expensive and reduce the amount of debt you will have at the time of graduation.

Private loans are not federally insured and will be more costly than Federal Stafford Loans. Lenders that make private loans are often more selective about who may receive loans, and in most cases require students to pass a credit check and have a cosigner. There are many types of private loans, all with unique fees and interest rates. If you need to borrow a private loan or have questions about them, contact your financial aid office.



LOAN FORGIVENESS & CANCELLATION

Loan forgiveness and cancellation programs exist at the federal, state and private levels. They are intended to recruit college graduates into high-need professions by offering loan forgiveness or cancellation to reduce student loan debt. For more information on loan forgiveness programs, visit our website at www.iowaCollegeAid.gov.

Iowa Teacher Loan Forgiveness

The State of Iowa offers up to 5 years of federal student loan cancellation benefits to Iowa teachers who teach in designated shortage areas. Eligible applicants must be fully licensed teachers who began their first teaching jobs in Iowa no earlier than July 1, 2007. The maximum annual award is 20% of the teacher's total Federal Stafford Loan balance, including principal and interest, not to exceed the average resident tuition rate established for students attending Iowa's public universities for the first year following the recipient's graduation. For 2010 graduates, the maximum award amount is \$7,141.

Federal Student Loan Cancellation for Teachers

The federal government's program may cancel qualified student loans up to \$5,000 for borrowers who teach for five consecutive years in low-income schools. Additional benefits of up to \$17,500 in loan forgiveness may be available to borrowers who teach grades 7-12 science or mathematics, or grades K-12 special education subject areas. You are required to make regular loan payments while completing a five-year service obligation, unless your outstanding balance will be less than the amount for which you qualify. The loan holder can not refund loan payments you make before completion of your fifth year of teaching service. Before requesting an application check with your loan holder to determine if you have a qualifying loan.

Iowa Registered Nurse & Nurse Educator Loan Forgiveness

The State of Iowa offers up to 5 years of federal student loan cancellation benefits to registered nurses employed in Iowa and for nurse educators teaching at eligible Iowa colleges and universities. Eligible applicants must be first employed as nurse educators or registered nurses in Iowa no earlier than July 1, 2007. The maximum annual award is 20% of the nurse educator's or registered nurse's total Federal Stafford Loan balance, including principal and interest, not to exceed the average resident tuition rate established for students attending Iowa's public universities for the first year following the recipient's graduation. For 2010 graduates, the maximum award is \$7,141.



Nursing Education Loan Repayment Program

The Nursing Education Loan Repayment Program (NELRP) is a federal program that provides registered nurse recipients with loan forgiveness of up to 60% of their qualifying loan balance in exchange for two consecutive years of service at a critical shortage facility. Go to the "Loan Forgiveness" section of www.iowaCollegeAid.gov for more information, deadlines and to apply online.



Federal Public Service Loan Forgiveness

The Public Service Loan Forgiveness program was created to encourage individuals to enter and continue to work full-time in public service jobs. Under this program, borrowers may qualify for forgiveness of their remaining Federal Direct loan balance after making 120 payments under certain repayment plans while employed full time by certain public service employers.

Civil Legal Assistance Attorney Student Loan Repayment

The Civil Legal Assistance Attorney Student Loan Repayment Program was established to encourage qualified individuals to enter and continue employment as civil legal assistance attorneys. Under this program, an eligible student loan borrower, with one or more eligible loans, may receive up to \$6,000 in student loan repayment for each year of completed service up to an aggregate total of \$40,000. Loan repayment commitments are limited to the amount appropriated for the program for a given fiscal year by the U.S. Congress and are only available to eligible applicants until those funds are fully committed. Therefore, awards under this program will be available to eligible borrowers on a first-come/first-served basis.



Perkins Loan Forgiveness Programs

Federal Perkins loans have additional loan forgiveness opportunities in the following areas:

- Firefighter, law enforcement, or corrections officer
- Military service
- Public defender
- Librarian with a master's degree
- Speech pathologist with a master's degree
- Early childhood educator
- ACTION program volunteer
- Nurse or medical technician
- Early intervention service provider
- Faculty member at a tribal college



TRANSFER STUDENTS

Sometimes your first college choice isn't the right fit or you may have started your education at a 2-year college. Many students transfer every year for a variety of reasons, so you can rest assured you are not alone. The trick to a successful transfer is to begin planning as soon as possible. Below are some transfer tips to help you make a smooth transition.

Keep Your Grades Up. Even if you aren't planning to finish a degree at your current college, you should continue to go to class and turn in assignments. The college or university you transfer to will want to see your most recent transcripts and they may have a grade requirement for all college level courses attempted. Even if you received good grades in high school or were previously admitted to your new college, low grades could ruin your plans to transfer.

Selecting a New College. You will need to decide where to transfer. Be sure to determine what factors contributed to your decision to leave your current college. Take these factors into consideration when selecting a new college. The college exploration tools available at www.IHaveaPlanIowa.gov can help you locate colleges and universities that match your needs and allow you to compare them side-by-side to see how they stack up.

Go On a Campus Visit. The experiences you have had on your current college campus may help you identify the benefits you want and need from a college experience.

Talk to Advisors. It is a good idea to work with advisors on both your old and new campuses to be sure everything is lined up. Ask the advisors if your classes will transfer. Advisors can help you with questions about articulation agreements, admission partnership programs and cross-enrollment options.

Check into the student services organizations and campus activities that will be available on your new campus. Not every campus offers the same activities or services.

Apply for Admission. You should check out the college's admission requirements, even if you were previously accepted. If you want to transfer course credits from your prior college you will need to send your most recent transcript to the new college. Some colleges will want a copy of your prior college course work regardless of whether you transfer any credits or not. Be sure to ask your admissions officer about placement exams, registering for classes and signing up for orientation.

Secure Your Housing. Whether you are living on campus or in an apartment, you will need to get the process rolling as soon as possible so that you have a place to live when your classes begin.

Apply for Financial Aid. Unfortunately you can not just transfer your current financial aid to your new college. You will need to add your new college to your Free Application for Federal Student Aid (FAFSA) in order to receive a new financial aid package. You also should notify your current financial aid office of your plans to transfer. Some types of financial aid can not be awarded by the new college until the old college has canceled your aid.

In addition, you should contact current scholarship donors to see if your scholarship can be transferred to your new college as well as seek new scholarship opportunities. If you plan to borrow to pay your expenses, when you transfer to the new college you may need to complete new loan applications. Contact your new college to find out their process and if they need your financial aid transcript from your current college.



www.transferiniowa.org

This website resource provides information for community college students interested in transferring to one of Iowa's Regent universities - Iowa State University, the University of Iowa or the University of Northern Iowa.



SERVICES FOR STUDENTS WITH DISABILITIES

Many students with disabilities graduate from high school and successfully continue their education at career and technical colleges as well as two-year and four-year colleges and universities. If you are a student with a disability, knowing your rights and responsibilities as well as the responsibilities that colleges and universities have towards you will help when requesting the support you need to learn and work successfully.



Follow these steps to make the transition to college easier:

1. Know your diagnosis, if you have one, and be comfortable talking about your disability.
2. Attend and participate in your annual Individualized Education Program (IEP) meetings. Know your annual goals.
3. Take college tours early. Interview the college for 'fit' by preparing a list of questions to ask ahead of time.
4. Identify and schedule an appointment with the person or the office responsible at the college for providing services to students with disabilities to discuss your potential need for services and support.
5. Bring documentation (written information) that describes how your disability impacts your living, learning, and working. Examples of documentation include the SAR*(Support for Accommodation Request) form, the most recent copy of your 504 plan, a statement from a treating physician, a psychological evaluation, and/or paperwork from Iowa Vocational Rehabilitation Service (IVRS).
6. Complete your application** early.
7. Meet with a campus advisor to help you set up a realistic course schedule.
8. If needed, enroll in preparatory courses in subjects where you have skill deficits before you begin your degree requirements.
9. Take responsibility for your learning. Increase your independence by discussing your progress with your professors and keeping track of assignments, due dates, and appointments.

*More information on services for students with disabilities, including an electronic SAR (Support for Accommodation Request) form with instructions for completion and contacts at Area Education Agencies (AEA) and Iowa colleges and universities are available on the Iowa College Aid website at www.iowaCollegeAid.gov.

**Your acceptance at the college or university of your choice is not influenced by a disability.

Data Source:

Coon, H. (2009), Making Transition to College Easier: Student Information. In Des Moines Area Community College Disability Services Office.

This list is intended to provide you with information only. It is not intended to be comprehensive. The data was reported to Iowa College Aid by Iowa college and university officials through the Federal IPEDS annual survey. The programs shown are those in which students completed degrees in 2004-2008. Many colleges or universities offer related programs that may not be shown here. Please contact the colleges and universities directly for program-specific information. More information on majors and programs for each of the categories below can be found at Iowa College Aid's website at www.iowaCollegeAid.gov.

COMMON MAJORS OFFER

	Alb	Allen College	Ashtford University	Briar Cliff University	Buena Vista University	Central College	Clarke University	Coe College	Cornell College	Des Moines College	Des Moines Comm. College	Divine Word College	Dordt College	Drake University	Eastern Iowa College	Emmaus College	Faith Baptist College	Graceland College	Grand View University	Grinnell College	Hawkeye College	Indian Hills Comm. College	Iowa Central
Agriculture, Operations and Sciences									X			X		X				X		X	X	X	X
Architecture and Related Programs								X	X														
Area, Ethnic and Cultural Studies							X	X															
Biological and Biomedical Sciences			X	X	X	X	X	X	X			X	X	X			X	X	X				
Business, Management, Marketing	X		X	X	X	X	X	X	X			X	X	X		X	X	X		X	X	X	X
Communications Technologies & Support									X					X				X		X		X	
Communications & Journalism				X	X	X	X	X				X	X				X	X					X
Computer and Information Sciences	X		X	X	X	X	X	X	X			X	X	X	X		X	X	X	X	X	X	X
Construction Trades									X					X							X	X	X
Education			X	X	X	X	X	X				X	X		X	X	X	X					
Engineering									X			X									X		X
Engineering Technologies/ Technicians									X					X						X	X	X	X
English Language and Literature/Letters			X	X	X	X	X	X				X	X	X			X	X	X				
Family, Consumer Sciences/Human Sciences					X	X	X	X	X			X		X			X	X	X		X		X
Foreign Languages and Literatures					X	X	X	X				X		X			X	X		X	X		
Health Professions and Clinical Sciences		X	X	X	X	X	X		X	X		X	X	X			X	X		X	X	X	X
History General				X	X	X	X	X				X	X	X			X	X	X				
Legal Professions and Studies	X								X				X					X					X
Liberal Arts and Sciences/General Studies			X	X		X	X		X	X		X	X	X			X	X		X	X	X	X
Library Science																							
Mathematics and Statistics				X	X	X	X	X				X	X	X			X	X	X				
Mechanic and Repair Technologies									X					X						X	X	X	X
MultiInterdisciplinary Studies				X	X	X		X	X				X	X			X		X	X		X	
Natural Resources and Conservations			X	X	X	X		X	X			X	X	X						X			X
Parks, Recreation, Leisure and Fitness			X	X	X	X	X	X	X			X		X			X	X					X
Personal and Culinary Services									X					X						X			
Philosophy and Religious Studies				X	X	X	X	X			X	X	X		X	X			X				
Physical Sciences			X	X	X	X	X	X				X	X	X			X		X				
Precision Production									X					X						X	X	X	X
Psychology			X	X	X	X	X	X				X	X	X			X	X	X				
Public Administration and Social Services				X	X		X		X			X	X	X			X	X				X	
Science Technologies/ Technicians																					X	X	
Security and Protective Services			X	X	X				X			X					X	X		X	X	X	X
Social Sciences			X	X	X	X	X	X			X	X	X	X			X	X	X	X			
Theology and Religious Vocations				X								X		X	X								
Transportation and Materials Moving														X						X	X	X	X
Visual and Performing Arts			X	X	X	X	X	X	X			X	X	X		X	X	X	X	X			X

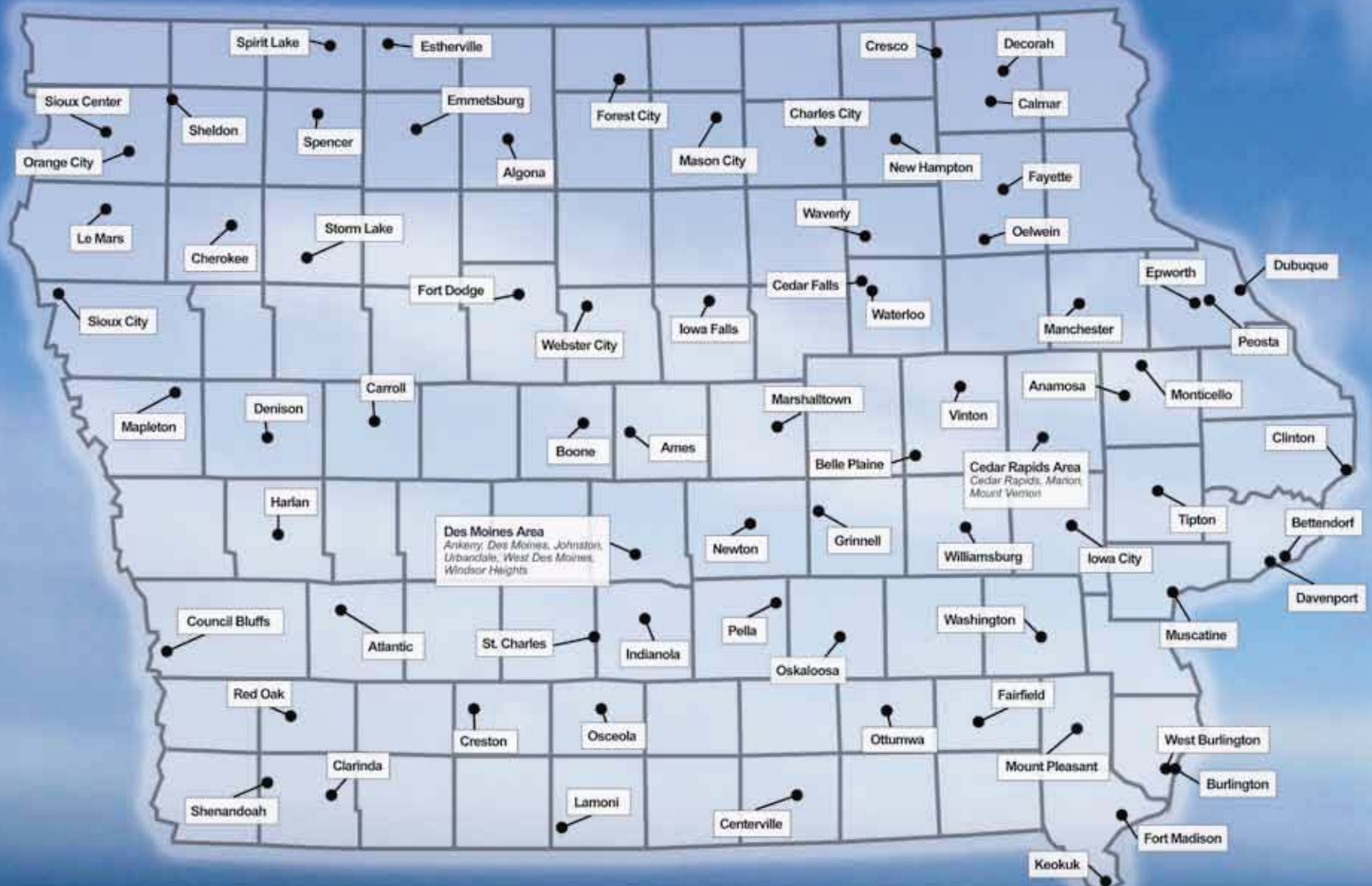
ED BY IOWA COLLEGES AND UNIVERSITIES

[illegible]

IOWA



POSTSECONDARY INSTITUTIONS



- Algona**
 ❧ Iowa Lakes Comm. College – 001864
 ❧ Briar Cliff University – 001846
- Ames**
 ❧ Drake University – 001860
 ▲ Iowa State University of Science and Technology – 001869
 ⚡ The Salon Professional Academy – 021609
- Anamosa**
 ⚡ Carlson College of Massage Therapy – 037203
- Ankeny**
 See Des Moines Area
- Atlantic**
 ❧ Iowa Western Comm. College – 004598
- Belle Plaine**
 ❧ Kirkwood Comm. College – 004076
- Bettendorf**
 ❧ Drake University – 001860
 ➔ Scott Comm. College (Eastern Iowa Comm. College District) – 004074
- Boone**
 ❧ Des Moines Area Comm. College – 004589
- Britt**
 ❧ North Iowa Area Comm. College – 001877
- Burlington**
 ⚡ Dayton's School of Hair Design – 016901
 ❧ Morningside College – 001879
- Calmar**
 ➔ Northeast Iowa Comm. College – 004587
- Carroll**
 ❧ Buena Vista University – 001847
 ❧ Des Moines Area Comm. College – 004589
- Cedar Falls**
 ❧ Hawkeye Comm. College – 004595
 📖 Kaplan University – E00920
 ⚡ La' James Intl. College – 013006
 ▲ University of Northern Iowa – 001890
- Cedar Rapids Area**
Cedar Rapids
 ⚡ American College of Hairstyling
 ⚡ Capri College – 014390
 III Coe College – 001854
 ❧ Drake University – 001860
 ❧ Graceland University – 001866
 📖 Kaplan University – 004220
 ➔ Kirkwood Comm. College – 004076
 ⚡ Mercy/St. Luke's School of Radiologic Technology
 III Mount Mercy University – 001880
 ❧ St. Ambrose University – 001889
 ⚡ St. Luke's Hospital Medical Technology Program
 ⚡ St. Luke's Hospital-Clinical Laboratory Science Program
 ❧ Upper Iowa University – 001893
 ❧ University of Iowa – 001892
- Marion**
 ❧ Kirkwood Comm. College – 004076
- Mount Vernon**
 III Cornell College – 001856
- Centerville**
 ❧ Graceland University – 001866
 ❧ Indian Hills Comm. College – 001849
- Charles City**
 ❧ North Iowa Area Comm. College – 001877
- Cherokee**
 ❧ Western Iowa Tech Comm. College – 004590
- Clarinda**
 ❧ Iowa Western Comm. College – 004598
- Clinton**
 📖 Ashford University – 001881
 ➔ Clinton Comm. College (Eastern Iowa Comm. College District) – 001853
 ❧ Morningside College – 001879
 ❧ St. Ambrose University – 001889
- Council Bluffs**
 ⚡ Advanced Air Inc.
 ❧ Buena Vista University – 001847
 ❧ Drake University – 001860
 ⚡ EQ School of Hair Design – 007611
 ➔ Iowa Western Comm. College – 004598
 ⚡ Jennie Edmundson Hos. Sch. of Radiologic Tech.
 📖 Kaplan University – E01153
 ⚡ Key Real Estate School
- Cresco**
 ❧ Northwest Iowa Comm. College – 004587
 ⚡ Total Look School of Cosmetology & Massage Therapy – 036074
- Creston**
 ❧ Buena Vista University – 001847
 ❧ Graceland University – 001866
 ⚡ Hair Tech School of Technology
 ❧ Southwestern Comm. College – 001857
- Davenport**
 ⚡ Capri College – 007717
 ⚡ Carver Aero, Inc.
 ⚡ Davenport Barber Styling College – 017304
 ➔ Scott Comm. College (Eastern Iowa Comm. College District) – 004074
 ⚡ Hamilton Technical College
 ⚡ Institute of Therapeutic Massage and Wellness
 📖 Kaplan University – 004586
 ⚡ La' James Intl. College – 021345
 III Palmer College of Chiropractic – 012300
 ⚡ Quad Cities School of Real Estate
 III St. Ambrose University – 001889
 ❧ University of Iowa – 001892
- Decorah**
 III Luther College – 001874
- Denison**
 ❧ Briar Cliff University – 001846
 ❧ Buena Vista University – 001847
 ⚡ Denison Job Corps Center
 ❧ Drake University – 001860
 ❧ Morningside College – 001879
 ❧ Western Iowa Tech Comm. College – 004590
- Des Moines Area**
Ankeny
 ➔ Des Moines area Comm. College – 004589
 III Faith Baptist Bible College and Theological Seminary – 007121
 ❧ Grand View University – 001867
 ⚡ Iowa College of Natural Health
 ❧ Simpson College – 001887
 ❧ Upper Iowa University – 001893
- Des Moines**
 III AIB College of Business – 003963
 ⚡ American College of Hairstyling
 ❧ College of Massage and the Healing Arts Center
 ❧ Des Moines Area Comm. College – 004589
 III Des Moines University – 015616
 III Drake University – 001860
 ❧ Graceland University – 001866
 III Grand View University – 001867
 ⚡ Institute for Social & Economic Development
 ⚡ Iowa Massage Institute
 ⚡ Iowa Methodist Medical Center School of Radiologic Technology – 006267
 ⚡ Iowa School of Beauty – 015139
 III Kingsway Christian College and Theological Seminary
 III Mercy College of Health Sciences – 006273
 ⚡ Mercy School of Clinical Laboratory Science and Technology
 ❧ University of Iowa – 001892
 ❧ Vatterott College – 026092
- Johnston**
 ❧ Drake University – 001860
 ❧ Graceland University – 001866
 ⚡ La' James Intl. College – 022741
- Urbandale**
 ⚡ Body Wisdom Massage Therapy School
 📖 Kaplan University – E00925
- West Des Moines**
 ❧ Des Moines area Comm. College – 004589
 ❧ Drake University – 001860
 ❧ Iowa Real Estate School
 ❧ Morningside College – 001879
 ❧ Simpson College – 001887
 ❧ University of Phoenix
 ❧ Upper Iowa University – 001893
 ❧ William Penn University – 001900
- Windsor Heights**
 ⚡ H&R Block
- Dubuque**
 ⚡ Capri College – 007588
 III Clark University – 001852
 III Emmaus Bible College – 016487
 ❧ Loras College – 001873
 ❧ Northeast Iowa Comm. College – 004587
 III University of Dubuque – 001891
 III Wartburg Theological Seminary – 001897
- Emmetsburg**
 ❧ Buena Vista University – 001847
 ➔ Iowa Lakes Comm. College – 001864
- Epworth**
 III Divine Word College – 001858
- Esterville**
 ❧ Briar Cliff University – 001846
 ❧ Buena Vista University – 001847
 ➔ Iowa Lakes Comm. College – 001864
- Fairfield**
 III Maharishi University of Mgmt. – 011113
- Fayette**
 III Upper Iowa University – 001893
- Forest City**
 📖 Waldorf College – 001895
- Fort Dodge**
 ❧ Buena Vista University – 001847
 ➔ Iowa Central Comm. College – 004597
 ⚡ La' James Intl. College – 008424
 ⚡ Millennium College of Massage & Reflexology
 ❧ Morningside College – 001879
- Fort Madison**
 ⚡ American Hair Academy – 022890
 ❧ Southeastern Comm. College – 004603
- Garner**
 ❧ North Iowa Area Comm. College – 001877
- Gilbert**
 ❧ Drake University – 001860
- Grinnell**
 III Grinnell College – 001868
- Hampton**
 ❧ North Iowa Area Comm. College – 001877
- Harlan**
 ❧ Iowa Western Comm. College – 004598
- Indianola**
 III Simpson College – 001887
- Iowa City**
 ⚡ Eastwind School of Holistic Healing
 ❧ Kirkwood Comm. College – 004076
 ⚡ La' James Intl. College – 009593
 ▲ University of Iowa – 001892
- Iowa Falls**
 ❧ Buena Vista University – 001847
 ➔ Ellsworth Comm. College – 001862
- Johnston**
 See Des Moines Area
- Keokuk**
 ⚡ Dayton's School of Hair Design – 016806
 ❧ Southeastern Comm. College – 004603
- Lake Mills**
 ❧ North Iowa Area Comm. College – 001877
- Lake View**
 ❧ Morningside College – 001879
- Lamoni**
 III Graceland University – 001866
- La Mars**
 ❧ Buena Vista University – 001847
 ⚡ Le Mars Beauty College
 ❧ Western Iowa Tech Comm. College – 004590
- Mapleton**
 ❧ Western Iowa Tech Comm. College – 004590
- Maquoketa**
 ❧ Clinton Comm. College – 001853
- Marshalltown**
 ❧ Buena Vista University – 001847
 ⚡ Iowa School of Beauty – 016519
 ➔ Marshalltown Comm. College – 001875
- Marion**
 See Cedar Rapids Area
- Mason City**
 ❧ Buena Vista University – 001847
 ❧ Drake University – 001860
 📖 Kaplan University – E00926
 ⚡ La' James College of Hairstyling – 007659
 ⚡ Mercy Medical Center – North Iowa School of Radiologic Technology
 ➔ North Iowa Area Comm. College – 001877
 ⚡ World Wide College of Auctioneering, Inc.
- Monticello**
 ❧ Kirkwood Comm. College – 004076
- Mount Pleasant**
 III Iowa Wesleyan College – 001871
- Mouth Vernon**
 See Cedar Rapids Area
- Muscatine**
 ❧ Iowa Wesleyan College – 001871
 ➔ Muscatine Comm. College (Eastern Iowa Comm. College District) – 001882
 ❧ St. Ambrose University – 001889
- New Hampton**
 ❧ Northeast Iowa Comm. College – 004587
- Newton**
 ❧ Buena Vista University – 001847
 ❧ Des Moines Area Comm. College – 004589
- Orange City**
 ❧ Briar Cliff University – 001846
 III Northwestern College – 001883
- Osage**
 ❧ North Iowa Area Comm. College – 001877
- Osceola**
 ❧ Southwestern Comm. College – 001857
- Oskaloosa**
 III William Penn University – 001900
- Ottumwa**
 ❧ Buena Vista University – 001847
 ➔ Indian Hills Comm. College – 008298
 ⚡ Iowa School of Beauty – 016306
 ❧ Morningside College – 001879
 ❧ St. Ambrose University – 001889
 ❧ University of Iowa – 001892
- Pella**
 III Central College – 001850
- Peosta**
 ❧ Northeast Iowa Comm. College – 012634
- Red Oak**
 ❧ Morningside College – 001879
 ❧ Southwestern Comm. College – 001879
- Sheldon**
 ❧ Briar Cliff University – 001846
 ❧ Morningside College – 001879
 ➔ Northwest Iowa Comm. College – 004600
- Shenandoah**
 ❧ Iowa Western Comm. College – 004598
- Sioux Center**
 III Dordt College – 001859
- Sioux City**
 ⚡ Bio-Chi Institute of Massage Therapy
 III Briar Cliff University – 001846
 ⚡ Iowa School of Beauty – 034413
 ⚡ Mercy Medical Center School of Medical Technology
 III Morningside College – 001879
 ⚡ Real Estate School of Siouxland
 III St. Luke's College – 007291
 ⚡ Tri-State Graduate Center
 ❧ University of Iowa – 001892
 ➔ Western Iowa Tech Comm. College – 004590
- Spencer**
 ❧ Buena Vista University – 001847
 ❧ Iowa Lakes Comm. College – 001864
- Spirit Lake**
 ❧ Buena Vista University – 001847
 ⚡ Faust Institute of Cosmetology
 ❧ Iowa Lakes Comm. College – 001864
 ⚡ Northwest Iowa School of Taxidermy
- St. Charles**
 ⚡ Hutton Valley School of Taxidermy
- Storm Lake**
 ❧ Briar Cliff University – 001846
 III Buena Vista University – 001847
 ⚡ Faust Institute of Cosmetology – 015973
 ❧ Iowa Central Comm. College – 004597
- Tipton**
 ❧ Kirkwood Comm. College – 004076
- Urbandale**
 See Des Moines Area
- Vinton**
 ❧ Kirkwood Comm. College – 004076
- Washington**
 ❧ Kirkwood Comm. College – 004076
- Waterloo**
 III Allen College – 030691
 ⚡ College of Hair Design – 007941
 ⚡ Covenant School of Radiography
 ➔ Hawkeye Comm. College – 004595
 ⚡ Livingston Aviation
 ❧ St. Ambrose University – 001889
 ❧ Upper Iowa University – 001893
- Waverly**
 III Wartburg College – 001896
- Webster City**
 ❧ Iowa Central Comm. College – 004597
 ⚡ Storm Flying Service, Inc.
- West Burlington**
 ❧ Iowa Wesleyan College – 001871
 ⚡ Kindred Spirits School of Taxidermy
 ➔ Southeastern Comm. College – 004603
 ❧ St. Ambrose University – 001889
- West Des Moines**
 See Des Moines Area
- Williamsburg**
 ❧ Kirkwood Comm. College – 004076
- Windsor Heights**
 See Des Moines Area

limitless

Deciding which college or university to attend is extremely important. It's never too early to begin exploring your educational options.



possibilities

DIRECTORY OF IOWA COLLEGES & UNIVERSITIES

TABLE OF CONTENTS

Welcome to the Directory of Iowa Colleges and Universities. The following pages contain valuable information about various educational opportunities in Iowa. We hope this directory helps you choose the college or university that is right for you!

AIB COLLEGE OF BUSINESS.....	33
ALLEN COLLEGE	61
ASHFORD UNIVERSITY	48
BEAUTY, BARBER AND MASSAGE THERAPY COLLEGES.....	64
BRIAR CLIFF UNIVERSITY	34
BUENA VISTA UNIVERSITY.....	34
CAREER/TECHNICAL COLLEGES	65
CENTRAL COLLEGE	35
CLARKE UNIVERSITY	35
CLINTON COMMUNITY COLLEGE.....	51
COE COLLEGE	36
CORNELL COLLEGE	36
DES MOINES AREA COMMUNITY COLLEGE	52
DES MOINES UNIVERSITY.....	62
DIVINE WORD COLLEGE	37
DORDT COLLEGE	37
DRAKE UNIVERSITY	38
ELLSWORTH COMMUNITY COLLEGE	52
EMMAUS BIBLE COLLEGE	38
FAITH BAPTIST BIBLE COLLEGE	39
GRACELAND UNIVERSITY.....	39
GRAND VIEW UNIVERSITY	40
GRINNELL COLLEGE	40
HAWKEYE COMMUNITY COLLEGE.....	53
INDIAN HILLS COMMUNITY COLLEGE.....	53
IOWA CENTRAL COMMUNITY COLLEGE	54
IOWA LAKES COMMUNITY COLLEGE.....	54
IOWA STATE UNIVERSITY.....	31
IOWA WESLEYAN COLLEGE	41
IOWA WESTERN COMMUNITY COLLEGE	55
KAPLAN UNIVERSITY.....	49

KIRKWOOD COMMUNITY COLLEGE.....	55
LORAS COLLEGE	41
LUTHER COLLEGE	42
MAHARISHI UNIVERSITY OF MANAGEMENT	42
MARSHALLTOWN COMMUNITY COLLEGE.....	56
MEDICAL TECHNOLOGY SCHOOLS.....	65
MERCY COLLEGE OF HEALTH SCIENCES.....	62
MORNINGSIDE COLLEGE	43
MOUNT MERCY UNIVERSITY	43
MUSCATINE COMMUNITY COLLEGE	56
NORTH IOWA AREA COMMUNITY COLLEGE	57
NORTHEAST IOWA COMMUNITY COLLEGE	57
NORTHWEST IOWA COMMUNITY COLLEGE	58
NORTHWESTERN COLLEGE	44
PALMER COLLEGE OF CHIROPRACTIC.....	63
SCOTT COMMUNITY COLLEGE.....	58
SIMPSON COLLEGE.....	44
SOUTHEASTERN COMMUNITY COLLEGE	59
SOUTHWESTERN COMMUNITY COLLEGE.....	59
ST. AMBROSE UNIVERSITY.....	45
ST. LUKE'S COLLEGE	63
THEOLOGICAL SEMINARIES	65
UNIVERSITY OF DUBUQUE	45
UNIVERSITY OF IOWA	32
UNIVERSITY OF NORTHERN IOWA.....	32
UPPER IOWA UNIVERSITY.....	46
WALDORF COLLEGE	50
WARTBURG COLLEGE	46
WESTERN IOWA TECH COMMUNITY COLLEGE	60
WILLIAM PENN UNIVERSITY	47

IOWA'S REGENT UNIVERSITIES

IOWA STATE UNIVERSITY

100 Enrollment Services Center - ISU • Ames, IA 50011-2010

Home Page: www.iastate.edu

County: Story

Setting: Urban

Accredited by: Higher Learning
Commission of the NCA

Calendar System: Semester

Enrollment: 22,521 undergraduate;
4,860 graduate;
564 Vet Med

Tuition & Fees: \$6,997

On-Campus Room & Board: \$7,472

Est. Books and Supplies: \$1,014

Admissions Director: Marc Harding
314 Enrollment Services Center
515-294-5836 or 800-262-3810

Financial Aid Director: Roberta Johnson
0210 Beardshear Hall
515-294-2223 or
financialaid@iastate.edu

FAFSA Code: 001869

County Population: 86,754

Control/Affiliation: Public University

Highest Offering or Degree: Doctorate

Types of Programs: Engineering,
Agriculture and Life Sciences, Design, Human
Sciences, Veterinary Medicine, Natural &
Physical Sciences, Liberal Arts, Business, Education

Priority Deadline for Aid Filing: March 1

Minimum Admission Requirement:

A Regent Admission Index (RAI) score of at least
245, calculated based on the equation: $RAI = (2 \times \text{ACT composite score}) + (1 \times \text{percentile high school rank}) + (20 \times \text{high school grade point average}) + (5 \times \text{number of years of high school core courses completed})$; and Iowa State's minimum high school course requirements.



Iowa State University is one of the nation's leading land-grant universities serving the people of Iowa, the nation, and the world through its integrated programs of instruction, research, extension and professional service.

Iowa State provides undergraduate programs across a broad range of disciplines. In its dedication to excellence in teaching, Iowa State strives to instill in its students the knowledge and skills essential for their individual development and their useful contribution to society.

A common goal of Iowa State's undergraduate education is to assure that all students, regardless of disciplinary major, acquire literacy in science and technology; an understanding of the intellectual, historical and artistic foundation of our culture; and a sensitivity to other cultures and international concerns.

Iowa State is ranked as one of the nation's top 50 public universities.

THE UNIVERSITY OF IOWA

107 Calvin Hall • Iowa City, IA 52242

Home Page: www.uiowa.edu

County: Johnson

Setting: Urban

Accredited by: Higher Learning
Commission of the NCA

Calendar System: Semester

Enrollment:

20,574 undergraduate;

5,720 graduate;

4,034 professional

Tuition & Fees: \$7,417

On-Campus Room & Board: \$8,331

Est. Books and Supplies: \$1,090

Admissions Director: Michael Barron

107 Calvin Hall

319-335-3847 or 800-553-4692

FAFSA Code: 001892

County Population: 128,094

Control/Affiliation: Public University

Highest Offering or Degree: Professional

Types of Programs: Liberal Arts & Sciences,
Engineering, Business, Nursing, Pharmacy,
Teacher Preparation, and Professional

Priority Deadline for Aid Filing: As soon
as possible after Jan. 1 for financial aid;
April 1 deadline for admissions applications

Minimum Admission Requirement:

See web site: www.uiowa.edu/admissions

Director of Student Financial Aid:

Mark Warner

208 Calvin Hall

319-335-1450 or 800-553-4692



With the smallest student body among the Big Ten public universities, The University of Iowa offers some unique advantages for students by combining the resources of a major research university with an outstanding tradition in undergraduate education. The environment is competitive but not tense; friendly and helpful, but with an expectation of independent inquiry on the part of faculty.

Because its educational programs are firmly grounded in the liberal arts, the University fosters an open attitude toward learning and prepares undergraduates to live in and understand a rapidly changing and diverse world.

UNIVERSITY OF NORTHERN IOWA

1227 West 27th Street • Cedar Falls, IA 50614

Home Page: www.uni.edu

County: Black Hawk

Setting: Urban

Accredited by: Higher Learning
Commission of the NCA

Calendar System: Semester

Enrollment: 13,080

Tuition & Fees: \$7,008

On-Campus Room & Board: \$7,140

Est. Books and Supplies: \$1,055

Admissions Director:

Christie Kangas

002 Gilchrist Hall

319-273-2281

FAFSA Code: 001890

County Population: 128,347

Control/Affiliation: Public University

Highest Offering or Degree: Doctorate

Types of Programs: Education, Natural
Sciences, Social and Behavioral Sciences,
Business, Humanities and Fine Arts, Liberal
Arts, Pre-professional Preparation

Priority Deadline for Aid Filing: June 1

Minimum Admission Requirement:

See Web site at www.uni.edu/admissions

Director of Student Financial Aid:

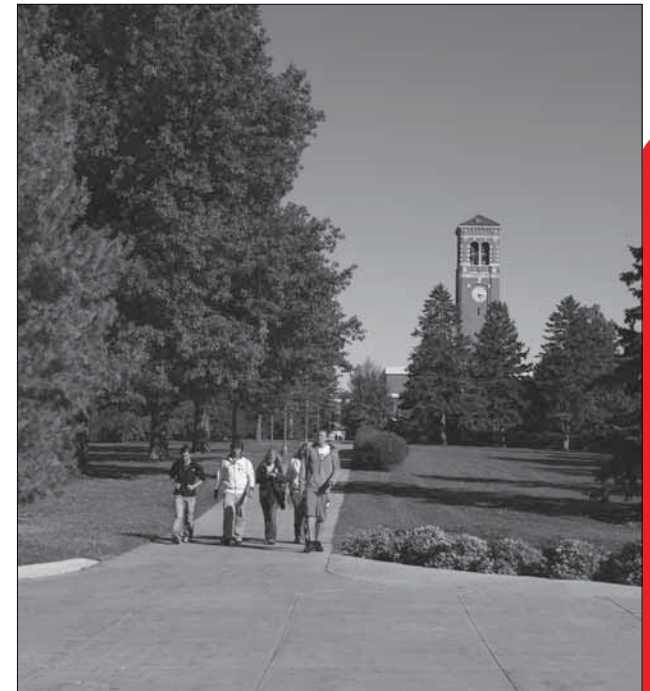
Joyce Morrow

105 Gilchrist Hall

319-273-2700

The University of Northern Iowa offers a world-class university education, providing personalized experiences and creating a lifetime of opportunities. UNI's park-like campus attracts students from all 99 counties in Iowa, 46 states and 70 countries.

UNI is ranked among the top two in the Midwest for public comprehensive universities.



IOWA'S INDEPENDENT COLLEGES & UNIVERSITIES

AIB COLLEGE OF BUSINESS

2500 Fleur Drive • Des Moines, IA 50321

Home Page: www.aib.edu

County: Polk

Setting: Urban

Accredited by: Higher Learning
Commission of the NCA

Calendar System: 4 Terms/Year
(day, evening and online)

Enrollment: 969

Tuition & Fees:
Full time: \$17,500

On-Campus Room & Board: \$4,500

Est. Books and Supplies: \$1,100

Director of Admissions: Mark Thompson
515-244-4221 or 800-444-1921

Financial Aid Director: Laurie Sanders
515-244-4221 or 800-444-1921

FAFSA Code: 003963

County Population: 420,000

Control/Affiliation: Nonprofit Independent

Highest Offering or Degree: Bachelor of Science

Types of Programs: Accounting, Business
Administration, Media Communication,
Financial Services, General Studies, Insurance
Services, Court Reporting and Captioning,
Sales & Marketing, Sports and Event Mgmt.,
Transcription Services, Travel & Hospitality
Mgmt. and Voice Captioning

Priority Deadline for Aid Filing: April 1

Minimum Admission Requirement:

Institutional Placement Tests
2.0 GPA



For nearly 90 years, AIB College of Business has established a strong reputation in the Des Moines business community. AIB provides a high-quality business education with an emphasis on the employment of graduates. AIB's unique schedule allows students to work in their chosen field, not only earning a degree, but valuable career experience. Day, evening, and online degree programs are available. AIB now offers a Bachelor's Degree program where students with an Associate Degree or other college credits can apply them toward a Bachelor of Science degree in Accounting, Business Administration, and Court Reporting and Captioning. The 20-acre campus is located near downtown Des Moines and features furnished apartment-style housing, and a sports facility with a gym and fitness center.

BRIAR CLIFF UNIVERSITY

3303 Rebecca Street • Sioux City, IA 51104

Home Page: www.briarcliff.edu

County: Woodbury

Setting: Urban

Accredited by: Higher Learning
Commission of the NCA

Calendar System: Trimester

Enrollment: 1,100

Tuition & Fees: \$23,418

On-Campus Room & Board: \$7,032

Est. Books and Supplies: \$1,050

Vice President of Enrollment

Management: Sharisue Wilcoxon
712-279-5200 or 800-662-3303

FAFSA Code: 001846

County Population: 104,000

Control/Affiliation: Roman Catholic

Highest Offering or Degree: Master's

Types of Programs: Bachelor of Arts,
Bachelor of Science, Bachelor of Science in
Nursing, Bachelor of Social Work, Master of
Arts in Human Resource Management and
Master of Science in Nursing

Priority Deadline for Aid Filing: March 15

Minimum Admission Requirement:

2.0 GPA

18 ACT score

Financial Aid Director: Robert Piechota
712-279-5200 or 800-662-3303

Briar Cliff University is a nationally recognized, academically rigorous, liberal arts university located in Sioux City, Iowa. With a deep commitment to openness and respect for the individual which is rooted in our Catholic Franciscan tradition, Briar Cliff shapes the hearts, minds and lives of its students.

Because teaching and learning at Briar Cliff focuses on outcomes, graduates enjoy an outstanding placement rate and are equipped with the skills and insight to be successful in the workplace and beyond. Small classes ensure that professors know students as individuals, working side-by-side to meet their academic goals and develop their personal values.

From the moment you arrive on our safe, scenic, hilltop campus, you will appreciate what our research defines as "an exceptionally welcoming campus."



BUENA VISTA UNIVERSITY

610 W. Fourth Street • Storm Lake, IA 50588

Home Page: www.bvu.edu

County: Buena Vista

Setting: Agricultural Community

Accredited by: Higher Learning
Commission of the NCA

Calendar System: 4-1-4

Enrollment: 1,000

Tuition & Fees: \$26,306

On-Campus Room & Board: \$7,582

Est. Books and Supplies: \$885

Director of Admissions:

Bridget Kurkowski

800-383-2821 or 712-749-2235

FAFSA Code: 001847

County Population: 20,411

Control/Affiliation: Private/Presbyterian

Highest Offering or Degree: Master's

Types of Programs: Career-based Liberal
Arts and General, Teacher Preparation, Pre-
Professional, Master's Degree in Education

Priority Deadline for Aid Filing: April 1

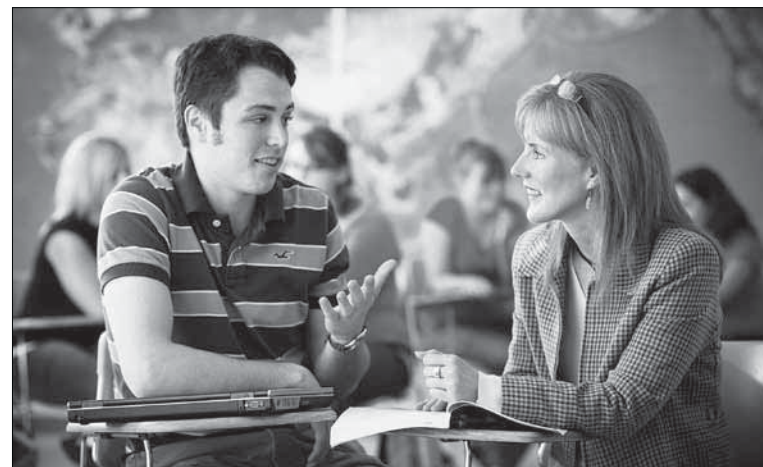
Minimum Admission Requirement:

HS with Superior Aptitude

Financial Aid Director:

Leanne Valentine

800-383-2821 or 712-749-2164



Buena Vista University (BVU) is a regionally acclaimed four-year institution providing a comprehensive curricular and co-curricular experience for its student body. Students are engaged in experiential, hands-on learning and mentored by distinguished faculty who inspire students to be innovative and imaginative in their academic and professional preparation.

When students come to BVU, they'll find great opportunities for learning that are relevant to the continually changing needs of whatever career path they choose to follow. Our supportive professors and staff really care about the success of our students both inside and outside the classroom. Their commitment, supported by strong academic programs, leading-edge teaching technology and facilities, along with opportunities to apply classroom theory to actual practice, all create one of the best learning environments at any private college in the upper Midwest. We have over 115 years of tradition and educational expertise focused entirely on positive learning outcomes for our students. At BVU, students discover a whole new way of learning.

CENTRAL COLLEGE

812 University Street • Pella, IA 50219

Home Page: www.central.edu

County: Marion

Setting: Pella, Iowa - town of 10,000
situated 40 miles SE of Des Moines

Accredited by: Higher Learning
Commission of the NCA

Calendar System: Semester

Enrollment: 1,700

Tuition & Fees: \$26,242

On-Campus Room & Board: \$8,702

Est. Books and Supplies: \$1,014

**Vice President for Student Enrollment
Management:**

Carol Williamson

641-628-7616 or 877-462-3687

FAFSA Code: 001850

County Population: 30,200

Control/Affiliation: Reformed Church in America

Highest Offering or Degree: Baccalaureate

Types of Programs: Liberal Arts and
Pre-Professional

Priority Deadline for Aid Filing: March 15

Minimum Admission Requirement:

3.0 GPA, 20 ACT; top 50% of graduating class

Financial Aid Director:

Jean Vander Wert

641-628-5336



Central College offers students a wide array of strong majors and pre-professional programs. A Central College education is grounded in the liberal arts which provides a broad background and develops critical thinking and communication skills. Your experience at Central will open the doors to unlimited opportunities to take you farther than you've ever dreamed.

A four-year, residential, liberal arts college affiliated with the Reformed Church in America, Central has eight study abroad programs throughout the world in which almost half of Central's students study.

Quality facilities are a main attraction on campus. Two buildings have received gold and silver ratings in Leadership in Energy and Environmental Design (LEED) from the U.S. Green Building Council, and a platinum rating, the highest rating given, recently was awarded for the education and psychology building, which opened fall 2009.

Students participate in numerous campus activities and intercollegiate athletics. During the past 10 years, the Dutch athletics program produced more than 100 All-Americans with 28 Iowa Conference team championships from 19 varsity sports offered. A member of the NCAA Division III, Central has won 11 national titles.

CLARKE UNIVERSITY

1550 Clarke Drive • Dubuque, IA 52001

Home Page: www.clarke.edu

County: Dubuque

Setting: Urban

Accredited by: Higher Learning
Commission of the NCA

Calendar System: Semester

Enrollment: 1,156

Tuition & Fees: \$24,610

On-Campus Room & Board: \$7,340

Est. Books and Supplies: \$1,040

Admissions Director:

Emily Kruse

563-588-6436 or 800-383-2345

FAFSA Code: 001852

County Population: 92,000

Control/Affiliation: Roman Catholic

Highest Offering or Degree: Doctorate

Types of Programs: Liberal Arts & Sciences,
Fine Arts, Nursing, Teacher Education,
Business, Education, Health Professions

Priority Deadline for Aid Filing: April 15

Minimum Admission Requirement:

2.5 GPA, ranking in top 50%
in HS graduating class,
competitive ACT or SAT score

Financial Aid Director:

563-588-6327 or 800-383-2345



Clarke University is a dynamic, Catholic, coeducational, liberal arts university known for superb teaching and academics. Academic offerings include more than 40 undergraduate liberal arts and pre-professional programs and four graduate degree programs. Founded in 1843 by the Sisters of Charity of the Blessed Virgin Mary, Clarke is located near the Mississippi River in Dubuque, Iowa. The college's 55-acre campus is a blend of historic buildings and new, state-of-the-art facilities.

COE COLLEGE

1220 First Avenue NE • Cedar Rapids, IA 52402

Home Page: www.coe.edu

County: Linn

Setting: Urban

Accredited by: Higher Learning
Commission of the NCA

Calendar System: Semester

Enrollment: 1,224

Tuition & Fees: \$30,860

On-Campus Room & Board: \$7,290

Est. Books and Supplies: \$1,000

Dean of Admission:

John Grundig
877-225-5663

FAFSA Code: 001854

County Population: 208,574

Control/Affiliation: Independent, Presbyterian

Highest Offering or Degree: Master's

Types of Programs: Liberal Arts,
Sciences & General, Business Administration,
Fine Arts, Teacher Preparation,
Pre-Professional

Priority Deadline for Aid Filing: March 1

Minimum Admission Requirement:

20 ACT, 3.0 GPA, top 40% of graduating class

Director of Financial Aid:

Barbara Hoffman
877-CALL-COE

Founded in 1851, Coe College redefines the liberal arts with a hands-on component.

In addition to major and general education courses, Coe students must complete Coe's well renowned Coe Plan. The plan, which includes 20 hours of community service, issue dinners and career-planning seminars, culminates with practical experiences. Students may satisfy this last requirement through an internship, research, practicum or study abroad.

Coe College is one of the few private liberal arts institutions in the country to require hands-on learning for graduation. One student studied the effects of selective logging on rain forest organisms in Costa Rica while others interned at places like Warner Bros. and the Chicago Board of Trade. Many students have also combined international travel with internships or student teaching.



CORNELL COLLEGE

600 First Street, West • Mt. Vernon, IA 52314

Home Page: www.cornellcollege.edu

County: Linn

Setting: Small Town

Accredited by: Higher Learning
Commission of the NCA

Calendar System:

One-Course-At-A-Time

Enrollment: 1,124

Tuition & Fees: \$31,050

On-Campus Room & Board: \$7,660

Est. Books and Supplies: \$810

Vice President for Admissions

& Financial Aid: Jonathan Stroud
877-579-4049 or 319-895-4215

Financial Aid Director: Cindi Reints
319-895-4216 or 877-579-4049

FAFSA Code: 001856

County Population: 208,574

Control/Affiliation: Independent,
United Methodist

Highest Offering or Degree: Baccalaureate

Types of Programs: Liberal Arts,
Pre-Professional, Teacher Education

Priority Deadline for Aid Filing: March 1

Minimum Admission Requirement:

Admissions committee recommends a secondary education program that includes: 4 years of English; 3 or more years of mathematics, 3 or more years of science, 2 or more years of foreign language, 3 or more years of social studies



Cornell College, the original Cornell, was founded in 1853, and the historic 129 acre campus is home of an attractively diverse student body of 1,121 who come from 48 states and 20 countries. Cornell's student-faculty ratio of 11:1, an average class size of 16, and class cap of 25, enables its exceptional faculty to provide students with highly personalized experience. Our distinctiveness begins in the classroom with our One Course At A Time (OCAAT) academic calendar and extends onto the campus where there is a strong sense of community, mentoring relationships between faculty and students and endless opportunities to lead and volunteer. Explore Cornell and see for yourself how we're creating one extraordinary opportunity after another for bright motivated students.

DIVINE WORD COLLEGE

102 Jacoby Drive, SW • P.O. Box 380 • Epworth, IA 52045

Home Page: www.dwci.edu

County: Dubuque

Setting: Agricultural Community

Accredited by: Higher Learning
Commission of the NCA

Calendar System: Semester

Enrollment: 125

Tuition & Fees: \$11,435

On-Campus Room & Board: \$3,000

Est. Books and Supplies: \$1,250

Admissions Director:

Leonard Uhal
800-553-3321

FAFSA Code: 001858

County Population: 90,000

Control/Affiliation: Roman Catholic

Highest Offering or Degree: Baccalaureate

Types of Programs: Liberal Arts & General

Priority Deadline for Aid Filing: August 1

Minimum Admission Requirement:

HS diploma/GED

Financial Aid Director:

Carolyn M. Waechter
800-553-3321

Divine Word College, a Roman Catholic seminary in the tradition of the Society of the Divine Word, educates men and women for missionary service as priests, Brothers, Sisters and laypersons. For this purpose, we offer an education that combines spiritual formation, a liberal arts curriculum, language learning and mission preparation within an environment that teaches and honors the rich cultural diversity of the world. This spiritual, academic, and experiential preparation serves the particular learning needs of our students, promotes their development as whole and responsible persons, and fosters a lifelong commitment to serving God's people.



DORDT COLLEGE

498 Fourth Avenue, NE • Sioux Center, IA 51250

Home Page: www.dordt.edu

County: Sioux

Setting: Agricultural Community

Accredited by: Higher Learning
Commission of the NCA

Calendar System: Semester

Enrollment: 1,300

Tuition & Fees: \$23,180

On-Campus Room & Board: \$6,310

Est. Books and Supplies: \$1,010

Admissions Executive Director:

Quentin Van Essen
712-722-6080 or 800-343-6738

FAFSA Code: 001859

County Population: 30,200

Control/Affiliation: Christian Reformed

Highest Offering or Degree: Master's

Types of Programs: Liberal Arts, General,
Teacher Education, BSN, BSW, BSE

Priority Deadline for Aid Filing: April 1

Minimum Admission Requirement:

HS-GED, ACT test

Financial Aid Director:

Michael Epema
712-722-6082



Dordt College is a Christian, comprehensive college located in Sioux Center, Iowa. Ninety-five percent of our students are full-time, and close to 90 percent live on campus. Associated with the Christian Reformed Church, we welcome all students interested in a Christ-centered education.

Dordt College offers accredited programs in Engineering, Nursing and Social Work, plus Agriculture, Business Administration, Computer Science, Digital Media, and some 35 other majors and areas of concentration.

DRAKE UNIVERSITY

2507 University Avenue • Des Moines, IA 50311

Home Page: www.drake.edu

County: Polk

Setting: Urban

Accredited by: Higher Learning Commission of the NCA

Calendar System: Semester

Enrollment: 3,548 undergraduate, 1,189 graduate, 916 professional

Undergraduate Tuition & Fees: \$26,960

On-Campus Room & Board: \$8,130

Est. Books and Supplies: \$900

Director of Admission: Laura Linn
515-271-2092 or

800-44-DRAKE, ext. 2092

Director, Student Financial Planning:

Susan Ladd 515-271-2905 or

800-44-DRAKE ext. 2905

FAFSA Code: 001860

County Population: 420,000

Control/Affiliation: Independent/
Non-denominational

Highest Offering or Degree: Doctorate

Types of Programs: Liberal Arts & General,
Teacher Preparation, Professional

Undergraduate Programs: Humanities,
Social, Natural, and Physical Sciences;
Fine Arts; Business; Education; Health Science;
Journalism

Graduate Programs: Master's, Specialist,
and Doctorate in Education, Pharmacy
Doctorate, Master's Programs in Business and
Public Administration, Juris Doctorate

Priority Deadline for Aid Filing: March 1

Minimum Admission Requirement: HS-GED

Drake University is a private, master's university in Des Moines, the state's center for business, publishing, government, and culture.

Drake offers a mix of liberal arts and professional education with more than 70 undergraduate majors across its colleges and schools- Arts & Sciences, Business and Public Administration, Education, Journalism & Mass Communication, and Pharmacy and Health Sciences-as well as joint degree programs with the Law School.

90 percent of Drake graduates find professional employment or enter graduate school within six months of earning their degree.



EMMAUS BIBLE COLLEGE

2570 Asbury Road • Dubuque, IA 52001

Home Page: www.emmaus.edu

County: Dubuque

Setting: Urban

Accredited by: ABHE and Higher Learning Commission of the NCA

Calendar System: Semester

Enrollment: 250

Tuition & Fees: \$12,604

On-Campus Room & Board: \$5,812

Est. Books and Supplies: \$600

Admissions Director:

Israel Chavez

800-397-2425, ext. 1320

FAFSA Code: 016487

County Population: 90,000

Control/Affiliation: Plymouth Brethren

Highest Offering or Degree: Baccalaureate

Types of Programs: Computer Information Systems, Intercultural Studies, Elementary Education, Music Ministry, Youth Ministries, Biblical Exposition & Theology, Music Education, Business Administration, Counseling Psychology

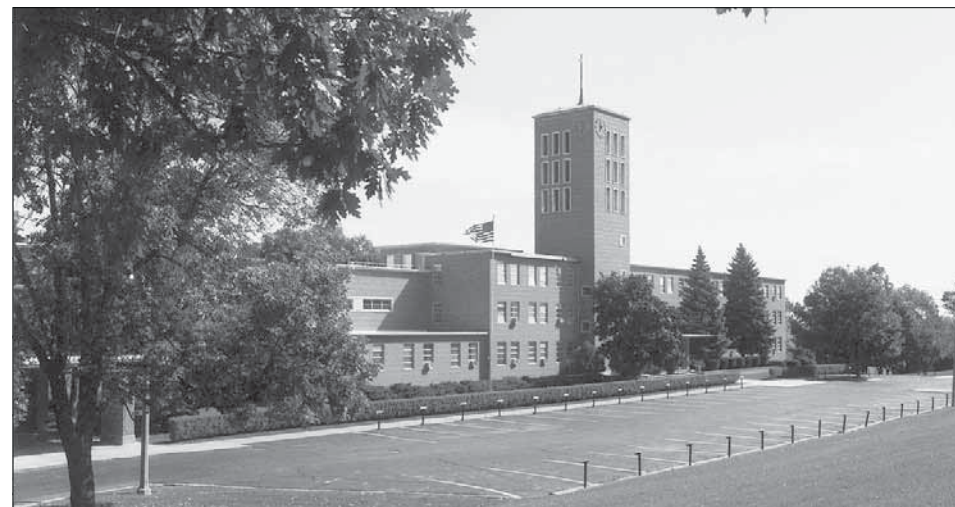
Priority Deadline for Aid Filing: June 10

Minimum Admission Requirement:

HS-GED

Financial Aid Director:

Steve Seeman 800-397-2425, ext. 1309



Emmaus Bible College is an institution of higher learning where our faculty demonstrate scholarship and our students are expected to excel in learning. Emmaus seeks to disciple its students, not merely educate them. Students are trained in the context of a Christian community that offers maximum opportunity for spiritual growth. All students major in Bible and receive a double major if they also enroll in any of four other academic programs offered. Feel free to stop by and visit the campus to see if Emmaus may be the place for you. Or send an e-mail to our admissions department, info@emmaus.edu.

FAITH BAPTIST BIBLE COLLEGE AND THEOLOGICAL SEMINARY

1900 NW Fourth Street • Ankeny, IA 50023

Home Page: www.faith.edu
County: Polk
Setting: Suburban
Accredited by: ABHE and Higher Learning Commission of the NCA
Calendar System: Semester
Enrollment: 417
Tuition & Fees: \$13,813
On-Campus Room & Board: \$5,540
Est. Books and Supplies: \$1,014
Admissions Director: Mark Davis
 515-964-0601 or 888-FAITH-4-U

FAFSA Code: 007121
County Population: 420,000
Control/Affiliation: Non Profit/ Baptist
Highest Offering or Degree: Professional
Types of Programs: Terminal Occupational below the BA, Professional
Priority Deadline for Aid Filing: March 15
Minimum Admission Requirement: HS-GED
Financial Aid Director: Breck Appell
 515-964-0601 or 888-FAITH-4-U

Faith Baptist Bible College exists to prepare students for life and ministry. Whether a student is looking to go into "full time" ministry as a pastor or missionary or simply looking to gain a better understanding of God's Word to better prepare for life, Faith excels at preparing students for both. On the undergraduate level, programs are offered in Biblical Studies, Elementary Education, Secondary Education, Pastoral, Assistant Pastoral, Administrative Assistant, and Music ministries. An emphasis in counseling and youth ministries are also available. The graduate program offers three Master of Arts degrees and the Master of Divinity Degree. Each program is carefully designed to integrate classroom learning and practical opportunities in ministry.

While academics are the core of a Faith education, the college and seminary also offer a variety of opportunities for involvement. Students participate in several varsity sports as well as intramural competition. Many Faith students are also given opportunities to travel throughout the United States and abroad on ministry and missions teams.



GRACELAND UNIVERSITY

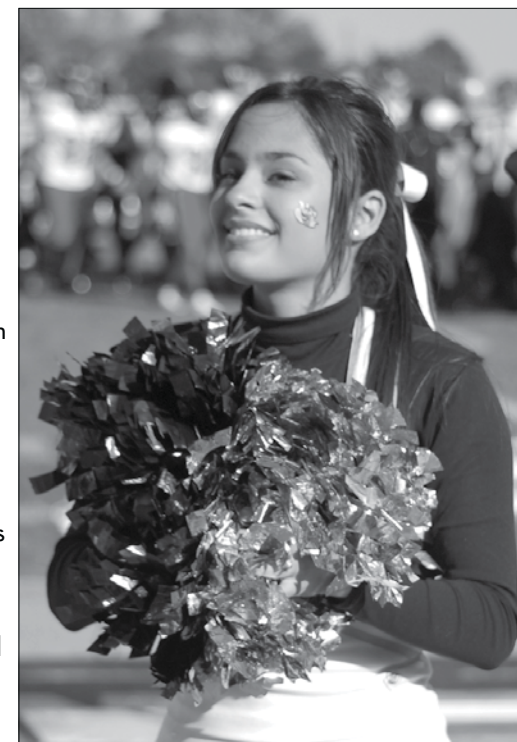
1 University Place • Lamoni, IA 50140

Home Page: www.graceland.edu
County: Decatur
Setting: Agricultural Community
Accredited by: Higher Learning Commission of the NCA
Calendar System: Semester
Enrollment: 2,355
Tuition & Fees: \$20,680
On-Campus Room & Board: \$7,040
Est. Books and Supplies: \$1,200
Dean of Admissions: Greg Sutherland
 866-GRACELAND or 641-784-5196

FAFSA Code: 001866
County Population: 8,409
Control/Affiliation: Community of Christ
Highest Offering or Degree: Master's
Types of Programs: Liberal Arts, Business, Elementary Education, Nursing
Priority Deadline for Aid Filing: March 1
Minimum Admission Requirement: H.S. grad.; upper half of class; 2.5 GPA; min. score of ACT 21/SAT 960. (Applicants who do not meet the criteria may be considered individually.)
Director of Financial Aid Services: James Wesenberg
 641-784-5136

Since 1895 Graceland University has challenged students to embrace learning as a lifestyle. Our students are encouraged and empowered to pursue diverse academic, social, religious and personal interests within the critical context of a liberal arts tradition.

The university's proud heritage began on "the Hill," our campus in Lamoni, in the beautiful rolling hills of southern Iowa. Graceland's reach now includes a modern campus in Independence, Missouri, several regional satellite sites and around the world via numerous online programs. Graceland students hail from 47 states and 41 countries. We bring the world to Graceland and our students travel the world on exciting 'Winter Terms.' Students choose from more than 50 academic majors and programs, including four Master's programs. We offer 19 varsity sports, 10 performing arts ensembles and 50 clubs and leadership organizations. Graceland students excel in athletics, Students in Free Enterprise (SIFE), theatre, visual arts, computer science, robotics, music and many other competitions regionally, nationally and internationally.



GRAND VIEW UNIVERSITY

1200 Grandview Avenue • Des Moines, IA 50316

Home Page: www.admissions.grandview.edu **FAFSA Code:** 001867

County: Polk

Setting: Urban

Accredited by: Higher Learning

Commission of the NCA,
National League of Nursing,
State Board of Nursing,
IA Dept. of Education

Calendar System: Semester

Enrollment: 1,985 undergraduate,
54 graduate

Tuition & Fees: \$20,222

On-Campus Room & Board: \$6,802

Est. Books and Supplies: \$900

County Population: 400,000

Control/Affiliation: Evangelical Lutheran
Church in America

Highest Offering or Degree: Master's

Types of Programs: Liberal Arts,
Teacher Education, Nursing, Business,
Graphic Design, Pre-Professional

Priority Deadline for Aid Filing: March 1

Minimum Admission Requirement:
HS-GED

Admissions Director: Diane Johnson
800-444-6083

Financial Aid Director: Michele Dunne
515-263-2820



Preparing students to succeed in their chosen careers, contribute to their communities and build satisfying lives is what Grand View is about, hence the University mission: engage, equip, empower. The success of Grand View's graduates is unparalleled. Every year for the past decade and a half, nearly 100% of the most recent graduating class was placed within six months of graduation-employed or enrolled in graduate school.

Much of that success is due to the challenging classroom environment. In the most recent National Survey of Student Engagement, Grand View achieved higher scores than all of its comparison groups for presenting students with an academic challenge. But the rest can be chalked up to the frequent and intensive practical workplace experiences more than 85% of Grand View students gain- internships, clinicals and practicums- and a vibrant campus life that emphasizes engagement.

GRINNELL COLLEGE

1121 Park Street • Grinnell, IA 50112-1690

Home Page: www.grinnell.edu

County: Poweshiek

Setting: Small Town

Accredited by: Higher Learning

Commission of the NCA

Calendar System: Semester

Enrollment: 1,600

Tuition & Fees: \$37,482

On-Campus Room & Board: \$8,880

Est. Books and Supplies: \$900

Dean of Admission & Financial Aid:

Doug Badger
641-269-3600 or 800-247-0113

FAFSA Code: 001868

County Population: 19,000

Control/Affiliation: Independent

Highest Offering or Degree: Baccalaureate

Types of Programs: Liberal Arts & Sciences

Priority Deadline for Aid Filing: February 1

Minimum Admission Requirement:

Very Selective

Financial Aid Director: Arnold Woods

641-269-3250

Grinnell College is an undergraduate, four-year, coeducational, residential college that seeks to develop in students both analytical and imaginative thinking in the liberal arts and sciences. The college exists to serve students directly and society indirectly; the ultimate goal is to educate citizens and leaders for our republic and the world beyond our borders. To this end, our graduates are equipped to pursue successful careers, satisfying personal lives, effective community service, and intellectually satisfying and physically active leisure. Selective in admission, the college is a multicultural residential community open to the intellectually qualified who are willing to participate. The college supports and encourages a faculty of active scholars whose primary mission is to teach.



IOWA WESLEYAN COLLEGE

601 North Main Street • Mt. Pleasant, IA 52641

Home Page: www.iwc.edu

County: Henry

Setting: Agricultural/
Industrial Community

Accredited by: Higher Learning
Commission of the NCA

Calendar System: Semester

Enrollment: 858 undergraduate

Tuition & Fees: \$22,050

On-Campus Room & Board: \$7,106

Est. Books and Supplies: \$1,100

Admissions Director: Mark Petty
319-385-6231 or 800-582-2383

FAFSA Code: 001871

County Population: 16,000

Control/Affiliation: United Methodist

Highest Offering or Degree: Baccalaureate
Types of Programs: Liberal Arts, General
and Teacher Preparation and Nursing

Priority Deadline for Aid Filing: April 1

Minimum Admission Requirement:

2.5 GPA, 19 ACT

Financial Aid Office:

319-385-6242 or 800-582-2383

Iowa Wesleyan College, established in 1842, is one of the oldest private, coeducational colleges west of the Mississippi River. The mission of Iowa Wesleyan College is to prepare students to succeed in a changing global environment. Iowa Wesleyan is a four-year liberal arts college providing quality individualized learning experiences that combine the development of the intellect with adaptive life skills. The college is affiliated with the United Methodist Church with which it shares a commitment to spiritual values, social justice and human welfare.



LORAS COLLEGE

1450 Alta Vista • Dubuque, IA 52001

Home Page: www.loras.edu

County: Dubuque

Setting: Urban

Accredited by: Higher Learning
Commission of the NCA

Calendar System: Semester

Enrollment: 1,683 undergraduate

Tuition & Fees: \$25,335

On-Campus Room & Board: \$7,026

Est. Books and Supplies: \$1,300

Admission Director: Sharon Lyons
563-588-7236 or 800-245-6727

FAFSA Code: 001873

County Population: 90,000

Control/Affiliation: Roman Catholic

Highest Offering or Degree: Master's

Types of Programs: Liberal Arts and
General, Teacher Preparation,
Pre-Professional Programs

Priority Deadline for Aid Filing: April 15

Minimum Admission Requirement:

Recommended minimum 2.5 GPA and
20 ACT score

Financial Aid Director: Julie A. Dunn
563-588-7136 or 800-245-6727



Established in 1839, The Loras College campus is nestled high atop the majestic bluffs of the Mississippi River in Dubuque, Iowa, and overlooks the states of Illinois, Wisconsin and Iowa. With an enrollment of just under 1,700, Loras is small enough to be personal, yet large enough to provide students a well-rounded academic and co-curricular experience. All full-time students at Loras receive a laptop computer for academic and personal use, and are offered over 40 majors and 13 pre-professional areas of study. There are also 21 collegiate athletic programs and over 100 clubs and organizations to be involved in at Loras. You will find numerous campus ministry, service, study abroad and internship opportunities to further your experience at Loras.

Loras has earned the 12th spot in the Top Tier among Best Midwest Baccalaureate Colleges in the 2010 edition of "America's Best Colleges" by U.S. News & World Report. To find out more about Loras College, visit campus! Go to www.loras.edu/visit, or call 1-800-245-6727.

LUTHER COLLEGE

700 College Drive • Decorah, IA 52101

Home Page: www.luther.edu

County: Winneshiek

Setting: Agricultural Community

Accredited by: Higher Learning
Commission of the NCA

Calendar System: 4-1-4

Enrollment: 2,519

Tuition & Fees: \$33,480

On-Campus Room & Board: \$5,800

Est. Books and Supplies: \$910

Vice President for Enrollment Management:

Scot Schaeffer

563-387-1430 or 800-458-8437

FAFSA Code: 001874

County Population: 20,913

Control/Affiliation: Evangelical Lutheran
Church in America

Highest Offering or Degree: Baccalaureate

Types of Programs: Liberal Arts

Priority Deadline for Aid Filing: March 1

Minimum Admission Requirement:

HS with Superior Aptitude

Director of Financial Aid:

Janice Cordell

563-387-1018 or 800-458-8437

Founded in 1861, Luther College is a four-year, liberal arts institution affiliated with the Evangelical Lutheran Church in America.

One of the outstanding undergraduate institutions in the Midwest, Luther offers more than 60 majors and pre-professional programs leading to the bachelor of arts degree. 92% of Luther's 177 full-time faculty hold an earned doctorate or terminal degree. A Phi Beta Kappa chapter attests the academic excellence of the college. Forty-one states and 47 countries are represented in the student body; co-curricular activities include 16 music ensembles and 19 intercollegiate sports. The scenic Decorah campus, with exceptional facilities and vistas of the Oneota Valley and the Upper Iowa River, rivals any in the region.



MAHARISHI UNIVERSITY OF MANAGEMENT

1000 N. Fourth Street • Fairfield, IA 52557

Home Page: www.mum.edu

County: Jefferson

Setting: Entrepreneurial and
Agricultural Community

Accredited by: Higher Learning
Commission of the NCA

Calendar System: Semester

Enrollment: 1,230

Tuition & Fees: \$24,430

On-Campus Room & Board: \$6,000

Est. Books and Supplies: \$1,000

Admissions Director:

Bradford Mylett

641-472-1110 or 800-369-6480

FAFSA Code: 011113

County Population: 20,000

Control/Affiliation: Independent

Highest Offering or Degree: Doctorate

Types of Programs: Liberal Arts, General
and Teacher Preparation

Priority Deadline for Aid Filing: April 15

Minimum Admission Requirement:

HS-GED

Financial Aid Director:

Bill Christensen

641-472-1156 or 800-369-6480



Maharishi University of Management (MUM) offers Consciousness-Based education to enable students to discover the field of pure consciousness within themselves as the source of all knowledge.

Other features of MUM include:

- * The Transcendental Meditation course to develop the student's inner potential. Extensive published research has found that this technique boosts learning ability and creativity, improves brain functioning, and reduces stress.
- * Block system: one course at a time to learn more... without the stress
- * Sustainability: B.S. in Sustainable Living, and MBA in Sustainable Business
- * Natural health program for all students
- * Organic vegetarian meals served fresh daily
- * Active learning – bringing knowledge to life
- * Visitors Weekends are held each month throughout the year

MORNINGSIDE COLLEGE

1501 Morningside Avenue • Sioux City, IA 51106

Home Page: www.morningside.edu
County: Woodbury
Setting: Urban
Accredited by: Higher Learning
 Commission of the NCA
Calendar System: Semester
Enrollment: 2,036
Tuition & Fees: \$22,980
On-Campus Room & Board: \$7,040
Est. Books and Supplies: \$1,014
Admissions Director: Robbie Rohlena
 712-274-5111 or 800-831-0806

FAFSA Code: 001879
County Population: 103,877
Control/Affiliation: United Methodist
Highest Offering or Degree: Master's
Types of Programs: Liberal Arts, General,
 Teacher Preparation & Professional
Priority Deadline for Aid Filing: March 1
Minimum Admission Requirement: 20 ACT or
 SAT 1410 and 2.5 GPA or top 50% of class
Financial Aid Director: Karen Gagnon
 712-274-5159



The Morningside College experience cultivates a passion for lifelong learning, and a dedication to ethical leadership and civic responsibility. Morningside College offers a total experience. Students develop various dimensions of themselves through the liberal arts core curriculum, a complete range of majors, internships, independent study, and career and graduate school advising services.

Within six months of graduation, more than 98% of graduates are employed or admitted to graduate school.

MOUNT MERCY UNIVERSITY

1330 Elmhurst Drive, NE • Cedar Rapids, IA 52402-4797

Home Page: www.mtmercy.edu
County: Linn
Setting: Urban
Accredited by: Higher Learning
 Commission of the NCA
Calendar System: 4-1-4
Enrollment: 1,671 undergraduate
Tuition & Fees: \$23,260
On-Campus Room & Board: \$7,260
Est. Books and Supplies: \$1,000
Vice President of Enrollment and Student Life:
 Dr. Sue Oatey
 319-368-6462 or
 800-248-4504 ext. 6462

FAFSA Code: 001880
County Population: 190,000
Control/Affiliation: Roman Catholic
Highest Offering or Degree: Graduate and
 Baccalaureate degrees
Types of Programs: Liberal Arts and
 Professional Programs
Priority Deadline for Aid Filing: March 1
Minimum Admission Requirement: 20 ACT,
 2.70 Core GPA, Upper 50% of Class
Director of Financial Aid:
 Bethany Rinderknecht
 319-368-6467 or
 800-248-4504 ext. 6467



Small campus. Big results.

Students who come to Mount Mercy appreciate the benefits of small. At Mount Mercy, you experience personal attention, hands-on learning and service, leadership development, and alumni eager to serve as mentors. All these benefits come with BIG RESULTS. Founded by the Sisters of Mercy in 1928, our student population today carries on their remarkable tradition of caring and serving others.

NORTHWESTERN COLLEGE

101 Seventh Street, SW • Orange City, IA 51041

Home Page: www.nwciowa.edu

County: Sioux

Setting: Agricultural Community

Accredited by: Higher Learning Commission of the NCA, CCNE, NCATE, CSWE, CAATE, IACBE

Calendar System: Semester

Enrollment: 1,225 undergraduate

Tuition & Fees: \$23,330

On-Campus Room & Board: \$7,090

Est. Books and Supplies: \$1,014

Admissions Office:

712-707-7130 or 800-747-4757

FAFSA Code: 001883

County Population: 31,589

Control/Affiliation: Reformed Church in America

Highest Offering or Degree: Baccalaureate

Types of Programs: Liberal Arts and Sciences, General, Teacher Preparation, and Pre-Professional

Priority Deadline for Aid Filing: April 1

Minimum Admission Requirement: HS-GED

Director of Financial Aid:

Eric Anderson

712-707-7131

Northwestern College emphasizes the development of the whole person – mind, body and spirit – in a caring, Christ-centered community. Northwestern integrates faith with rigorous learning in a way that imparts not just knowledge, but wisdom. Students are prepared for careers in a constantly changing workplace and, more importantly, they are prepared for lives of leadership and service.

The academic program includes more than 40 majors and numerous opportunities for off-campus study. Northwestern students are taught by faculty who have earned the highest degrees in their fields at such institutions as Notre Dame, Duke, Vanderbilt and UCLA. Many construction projects have taken place in the past decade on Northwestern's campus, including the student center, facilities for the arts and athletics, and apartments.



SIMPSON COLLEGE

701 North C Street • Indianola, IA 50125

Home Page: www.simpson.edu

County: Warren

Setting: Small Town/Suburban

Accredited by: Higher Learning Commission of the NCA

Calendar System: Semester

Enrollment: 1,988 Undergraduate

Tuition & Fees: \$26,837

On-Campus Room & Board: \$7,639

Est. Books and Supplies: \$900

Vice President of Enrollment:

Deborah Tierney

515-961-1624 or

800-362-2454 ext. 1624

FAFSA Code: 001887

County Population: 42,981

Control/Affiliation: United Methodist

Highest Offering or Degree: Master's

Types of Programs: Liberal Arts and General, Teacher Preparation

Priority Deadline for Aid Filing: April 1

Minimum Admission Requirement: High School diploma/GED; Admissions Committee evaluates high school transcript reflecting a strong college prep curriculum, ACT/SAT scores, and class rank, as well as recommendation(s).

Assistant V.P. of Enrollment & Financial

Assistance: Tracie Paxon

515-961-1630 or

800-362-2454 ext. 1630



Simpson College is more than a beautiful campus. The college has an outstanding faculty and renowned curricula, including more than 40 majors, minors and pre-professional programs. A 4-4-1 calendar provides students with many interesting learning opportunities, including internships, career observations and study programs both abroad and in the United States. Located just 12 miles from Des Moines, Iowa's capital and largest metropolitan area, Simpson's ideal location allows students the opportunity to enjoy both city sophistication and small-town charm. The beautiful 73-acre tree-lined campus provides a setting that nurtures creativity, energy and productivity.

ST. AMBROSE UNIVERSITY

518 W. Locust Street • Davenport, IA 52803-2898

Home Page: www.sau.edu

County: Scott

Setting: Urban

Accredited by: Higher Learning
Commission of the NCA

Calendar System: Semester

Enrollment: 2,890 undergraduate
840 graduate

Tuition & Fees: \$23,910

On-Campus Room & Board: \$8,010

Est. Books and Supplies: \$800

Admissions Office: Meg Halligan
563-333-6300 or 800-383-2627

FAFSA Code: 001889

County Population: 200,000

Control/Affiliation: Roman Catholic

Highest Offering or Degree: Doctorate

Types of Programs: More than
75 programs of study

Priority Deadline for Aid Filing: March 15

Minimum Admission Requirement:
2.5 GPA or 20 ACT

Financial Aid Director:
Julie Haack
563-333-6314

At St. Ambrose you'll find a top-notch education tailored to your ambition and personalized to your needs. We start by offering more than 75 programs of study—a huge number for a small, student-centered school like ours—and the flexibility to mix majors, minors and electives to match your interests. More than 98% of undergraduate students receive financial aid and no classes are taught by graduate assistants, making a quality education, surprisingly affordable.

Our housing, which includes suite-style, apartment-style, and townhouse living, is said to be the best in the region. We offer 22 varsity sports for men and women in a highly successful athletics program, and a wide range of intramural sports, and student clubs and organizations. No wonder we're one of the fastest-growing private colleges in Iowa!



UNIVERSITY OF DUBUQUE

2000 University • Dubuque, IA 52001

Home Page: www.dbq.edu

County: Dubuque

Setting: Urban

Accredited by: Higher Learning
Commission of the NCA

Calendar System: 4-1-4

Enrollment: 1,500 total
1,300 undergraduate

Tuition & Fees: \$21,590

On-Campus Room & Board: \$7,370

Est. Books and Supplies: \$950

Dean of Admission:
Jesse James
800-722-5583

FAFSA Code: 001891

County Population: 65,000

Control/Affiliation: Presbyterian [PC (USA)]

Highest Offering or Degree: Doctorate

Types of Programs: Accounting, Aviation,
Biology, Business, Computer Graphics &
Interactive Media, Health, Wellness &
Recreation, Nursing, Philosophy, Psychology,
Religious Studies, Sociology, Speech
Communication

Priority Deadline for Aid Filing: April 1

Minimum Admission Requirement:
ACT or SAT required; GPA considered

Dean of Student Financial Planning:
Tim Kremer
563-589-3170



The University of Dubuque is a private, coeducational professional university with a focus in the liberal arts. Our commitment to nurturing the mind, body, and spirit, as well as encouraging students to explore their fullest potential, is part of a rich Christian heritage that dates back to the University's founding in 1852.

We strive to balance the cultural and spiritual values within traditional higher education with excellent professional preparation in programs planned for 21st century needs and opportunities – all linked with informed and inspired uses of technology. The University's program leadership in Aviation, Business, Computer Graphics/Interactive Media, Education, Environmental Science, and Nursing is nationally recognized. Our welcoming interfaith community of students comes from across the country and around the globe.

UPPER IOWA UNIVERSITY

P.O. Box 1859 • Fayette, IA 52142

Home Page: www.uiu.edu

County: Fayette

Setting: Agricultural Community

Accredited by: Higher Learning
Commission of the NCA

Calendar System: Semester

Enrollment: 6,158 undergraduate
(including Fayette campus and
15 Education Centers)

Tuition & Fees: \$22,350

On-Campus Room & Board: \$6,870

Est. Books and Supplies: \$1,400

Vice President for Enrollment Management:

Lincoln Morris
Parker-Fox Hall, Box 1859
800-553-4150 opt. 3

FAFSA Code: 001893

County Population: 21,761

Control/Affiliation: Independent/Nonprofit

Highest Offering or Degree: Master's

Types of Programs: Business, Liberal Arts,
Physical Sciences, General and Teacher
Preparation, U.S. Learning Centers and
Distance Education

Priority Deadline for Aid Filing: March 1

Minimum Admission Requirement:

2.0 GPA, 16 ACT

Director of Financial Aid:

Jobyna Johnston
Alexander-Dickman Hall, Box 1859
800-553-4150 opt. 3



Founded in 1857, Upper Iowa University is a private, not-for-profit university providing undergraduate and graduate degree programs and leadership development opportunities to over 6,600 students—nationally and internationally—at its Fayette campus and learning centers worldwide. Upper Iowa University is a recognized innovator in offering accredited, quality programs through flexible, multiple delivery systems, including online and independent study. For more information, visit www.uiu.edu.

WARTBURG COLLEGE

100 Wartburg Blvd. • P.O. Box 1003 • Waverly, IA 50677-0903

Home Page: www.wartburg.edu

County: Bremer

Setting: Rural Community

Accredited by: Higher Learning
Commission of the NCA

Calendar System: 4-4-1

Enrollment: 1,800

Tuition & Fees: \$29,020

On-Campus Room & Board: \$7,975

Est. Books and Supplies: \$1,100

Assistant Vice President for Admissions:

Todd Coleman
todd.coleman@wartburg.edu
319-352-8264 or 800-772-2085

FAFSA Code: 001896

County Population: 23,325

Control/Affiliation: Evangelical Lutheran
Church in America

Highest Offering or Degree: Baccalaureate

Types of Programs: Liberal Arts and
General, Teacher Preparation

Priority Deadline for Aid Filing: March 1

Minimum Admission Requirement:

19 ACT, top half of class,

Financial Aid Director:

Jennifer Sassman
319-352-8262 or 800-772-2085



Wartburg is a private, Lutheran, liberal arts college with an enrollment of 1,800 students, including 95 international students from 39 countries. Dedicated to challenging and nurturing students for lives of leadership and service, the college is characterized by vigorous academic expectations within an environment of strong personal support.

A Wartburg education emphasizes undergraduate research, experiential learning through practicums, internships and cultural immersions; leadership development through workshops, mentoring, class work, and community partnerships; as well as a focus on ethics, values, and multicultural and global experiences. May Term, part of Wartburg's 4-4-1 academic calendar, gives students unique opportunities for study abroad or participation in field experiences and internships. Notably, Wartburg has a placement average of 98% of graduates who are placed in jobs or graduate schools within seven months of graduation.

WILLIAM PENN UNIVERSITY

201 Trueblood Avenue • Oskaloosa, IA 52577

Home Page: www.wmpenn.edu

County: Mahaska

Setting: Agricultural Community

Accredited by: Higher Learning
Commission of the NCA

Calendar System: Semester

Enrollment: 1,800 Undergraduate

Tuition & Fees: \$20,234

On-Campus Room & Board: \$5,392

Est. Books and Supplies: \$950

Director of Admissions:

Kerra Strong

641-673-1014 or 800-779-7366

FAFSA Code: 001900

County Population: 21,900

Control/Affiliation: Quaker

Highest Offering or Degree: Master's

Types of Programs: Liberal Arts,
Pre-Professional, Teacher Preparation

Priority Deadline for Aid Filing: April 15

Minimum Admission Requirement:

2.0 GPA, ACT 18, HS Diploma/GED

Financial Aid Director:

Cyndi Peiffer

641-673-1060



William Penn University offers a quality liberal arts education that is firmly rooted in leadership development. Professors who care about your personal goals, combined with opportunities for campus and community involvement, build an educational foundation that will prepare you for success!

Founded by Quaker pioneers, William Penn University embraces traditional values of integrity, simplicity, compassion, ethical practice, acceptance, tolerance, and service. It is also one of the most diverse campuses in Iowa, with students from 43 states and 10 countries.



IOWA'S PROPRIETARY COLLEGES & UNIVERSITIES

ASHFORD UNIVERSITY

400 N. Bluff Boulevard • Clinton, IA 52732

Home Page: www.ashford.edu

County: Clinton

Setting: Suburban

Accredited by: Higher Learning
Commission of the NCA

Calendar System: Semester

Enrollment: 686

Tuition & Fees: \$16,270

On-Campus Room & Board: \$6,000

Est. Books and Supplies: \$1,150

Admissions Director:

Jason Woods

800-242-4153

FAFSA Code: 001881

County Population: 49,782

Control/Affiliation: Independent

Highest Offering or Degree: Master's

Types of Programs: Arts & Sciences,
Business, Education

Priority Deadline for Aid Filing: March 1

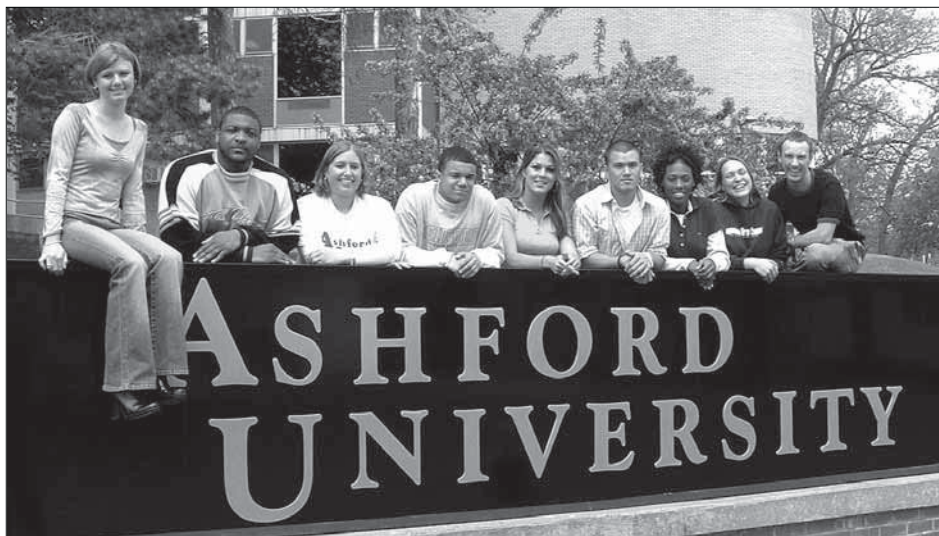
Minimum Admission Requirement:

HS-GED

Financial Aid Director:

Lisa Kramer

800-242-4153



Founded in 1918, Ashford University is committed to providing accessible, affordable, innovative, high quality degree programs to its campus, online, and accelerated students.

We offer programs at our beautiful and historic campus in Clinton, Iowa, and offer a wide array of athletics teams, campus events and activities, that both our campus and online students enjoy. In addition to traditional students, we are also committed to the needs of the working adult learner, and offer a broad selection of bachelor and master degree programs that are flexible and accelerated.

KAPLAN UNIVERSITY

Des Moines • Cedar Rapids • Cedar Falls • Council Bluffs • Mason City • Davenport

Home Page: www.kucampus.edu

County: Varies

Setting: Urban

Accredited by: Higher Learning
Commission of the NCA

Calendar System: Terms

Enrollment: 3,900

Tuition & Fees: \$14,046 - \$15,327

Est. Off-Campus Room & Board: \$17,226

Est. Books and Supplies:

The University provides course material as needed for each program (except Practical Nursing; est. books cost \$1,385)

FAFSA Code: Varies by campus

County Population: Varies by campus

Control/Affiliation: Proprietary

Highest Offering or Degree: Master's

Types of Programs: Varies by campus
Diplomas, Certificates, AAS Degrees, Bachelor
of Science Degrees, Masters Degrees

Priority Deadline for Aid Filing: None

Minimum Admission Requirement:

HS Diploma, GED

Kaplan University recognizes individual worth and dignity of all people. All students are encouraged to reach their potential within the framework of the individual needs, interests, and capabilities. This is why Kaplan University offers an education through Residential Campuses, Online Platform, or a combination of both.

Each Kaplan University onsite program is taught in specially built classrooms, including computer and medical labs. Kaplan University's online platform is located on the Internet at www.kucampus.kaplan.edu.

Types of programs/ degrees vary by campus and availability.

Offerings include:

Accounting
Business
Communication
Corrections
Crime Scene
Criminal Justice
Education
Global Travel & Hospitality
Health & Wellness
Interdisciplinary Studies
Information Systems
Legal Studies
Medical Assisting
Medical Transcription
Paralegal
Practical Nursing
Psychology
Software Development
Teaching
Teacher Intern



Des Moines Campus

4655 121st Street
Urbandale, Ia 50323
800-383-0253

Admissions Director – Mark Bandy

Director of Financial Aid –

Summer Vaselaar

FAFSA Code: E00925

Cedar Falls Campus

7009 Nordic Drive
Cedar Falls, Ia 50613
800-728-1220

Admissions Director –

Jill Hansen

Director of Financial Aid –

Amy Kramer

FAFSA Code: E00920

Cedar Rapids Campus

3165 Edgewood Pkwy S.W.
Cedar Rapids, Ia 52404
800-728-0481

Admissions Director – Dave Ruddy

Director of Financial Aid –

Robert Brooks

FAFSA Code: 004220

Council Bluffs Campus

1751 Madison Ave., Suite 750
Council Bluffs, Ia 51503
800-518-4212

Admissions Director –

Nick Boone

Director of Financial Aid –

Nicole Jenness

FAFSA Code: E01153

Davenport Campus

1801 East Kimberly Road
Davenport, Ia 52807
800-747-1035

Admissions Director –

Jason Wilebski

Director of Financial Aid –

Christine Christopherson

FAFSA Code: 004586

Mason City Campus

2570 4th Street S.W.
Mason City, Ia 50401
800-274-2530

Admissions Director –

Sara Turnbull

Director of Financial Aid –

Shari Garrison

FAFSA Code: E00926

WALDORF COLLEGE

106 South Sixth Street • Forest City, IA 50436

Home Page: www.waldorf.edu

County: Winnebago

Setting: Agricultural Community

Accredited by: Higher Learning
Commission of the NCA

Calendar System: Semester

Enrollment: 558

Tuition & Fees: \$18,760

On-Campus Room & Board: \$5,954

Est. Books and Supplies: \$980

Director of Admissions:

Carl Childs

800-292-1903

FAFSA Code: 001895

County Population: 11,351

Control/Affiliation: Independent

Highest Offering or Degree: Baccalaureate

Types of Programs: Biology, Business,
Communications, Criminal Justice Administration,
Education, English, Fire Science Administration,
History, Humanities, Music, Organizational
Leadership, Psychology, Theatre, Wellness

Priority Deadline for Aid Filing: March 1

Minimum Admission Requirement:

2.0 GPA, 18 ACT

Financial Aid Director:

Duane Polsdofer

800-292-1903

Big possibilities await you at this small, friendly college in the welcoming town of Forest City, Iowa. Waldorf College is a bachelor's level college offering residential and hybrid online degree programs that combine a strong liberal arts base with applied learning. Co-curricular programs ranging from the second oldest acappella choir in the nation to an outstanding theatre program and competitive athletic teams provide students with a wide range of opportunities for meaningful participation and personal development.

With more than 35 clubs and organizations, Waldorf offers a variety of opportunities for you to get involved.

As a liberal arts college with Christian foundations and beliefs, Waldorf welcomes students of all faiths and Christian denominations. A commitment to high ethical standards, philanthropy, and cultural diversity are encouraged. More than 98% of Waldorf graduates enter their chosen field within six months of graduating.



IOWA'S COMMUNITY COLLEGES

CLINTON COMMUNITY COLLEGE

Eastern Iowa Community College District, 1000 Lincoln Blvd. • Clinton, IA 52732

Home Page: www.eicc.edu

County: Clinton

Setting: Suburban

Accredited by: Higher Learning
Commission of the NCA

Calendar System: Semester

Enrollment: 1,596

Tuition & Fees:

Full Time: \$3,136

Per Credit Hour: \$112

Est. Off-Campus Room & Board:
\$7,290

Est. Books and Supplies: \$1,600

Admissions Director: Cheryl Tack
800-637-0559

FAFSA Code: 001853

County Population: 50,149

Control/Affiliation: State/Local

Highest Offering or Degree: Associate

Types of Programs: College Transfer Arts &
Sciences, Career/Technical

Priority Deadline for Aid Filing: April 1

Minimum Admission Requirement:

Open Admission

Financial Aid Officer: Teresa Thiede
563-244-7070



Clinton Community College is part of the Eastern Iowa Community College District, which also includes Scott and Muscatine Community Colleges. The district offers more than 40 career education programs and an equal number of college transfer concentrations. The colleges received the maximum accreditation from the North Central Association and work closely with Iowa's Regent institutions to ensure transferability of credits. Technology programs are kept up-to-date due to a strong relationship with the business community.

DES MOINES AREA COMMUNITY COLLEGE

2006 South Ankeny Blvd. • Ankeny, IA 50023

Campuses: Ames, Ankeny, Boone, Carroll, Newton, Urban (Des Moines) and West (West Des Moines)

Home Page: www.dmacc.edu

County: Polk & Central Iowa

Setting: Urban, Rural, and Suburban

Accredited by: Higher Learning Commission of the NCA

Calendar System: Semester

Enrollment: 30,949

Tuition & Fees:

Per Credit Hour: \$125 (Iowa resident)

Est. Off-Campus Room & Board:

9-month - \$5,736

Est. Books and Supplies:

9-month - \$1,288

As one of America's most respected community colleges, Des Moines Area Community College is committed to helping its students achieve success, ignite passions and realize dreams.

DMACC offers a path to more than 75 professions, everything from accounting to welding. Then there are the pre-professional programs in engineering, medicine, law and veterinary medicine. (Despite the variety of career choices, most of DMACC students major in liberal arts while deciding their career path or next step to a four-year school.)

DMACC delivers accessible and affordable learning opportunities that result in high-skill, high-wage jobs. Professors and instructors provide a quality, engaging and practical teaching experience. Despite the College being one of the largest postsecondary institutions in Iowa, class sizes and tuition are among the smallest.

For more information, contact us 24 hours a day at www.dmacc.edu.



FAFSA Code: 004589

County Population: 420,000

Control/Affiliation: State/Local

Highest Offering or Degree: Associate

Types of Programs: Terminal Occupational below the BA, 2 years creditable toward a BA

Priority Deadline for Aid Filing: April 1

Minimum Admission Requirement:

Ability to benefit from attendance

Enrollment Manager: Michael Lentsch

800-362-2127 ext. 6216 or 515-964-6216

Financial Aid Director: Delores Hawkins

800-362-2127 ext. 6514 or 515-964-6514

ELLSWORTH COMMUNITY COLLEGE

Iowa Valley Community College District

1100 College Avenue • Iowa Falls, IA 50126

Home Page: www.ellsworthcollege.com

County: Hardin

Setting: Agricultural Community

Accredited by: Higher Learning

Commission of the NCA

Calendar System: Semester

Enrollment: 1,152

Tuition & Fees:

Full Time: \$4,770

On-Campus Room & Board: \$4,862

Est. Books and Supplies: \$1,000

Admissions Director: Annie Kalous

800-322-9235 ext. 8519

FAFSA Code: 001862

County Population: 18,812

Control/Affiliation: State/Local

Highest Offering or Degree: Associate

Types of Programs: Arts & Sciences, Vocational, Career Option, 2 years creditable toward a BA

Priority Deadline for Aid Filing: June 1

Minimum Admission Requirement:

HS Diploma, GED

Financial Aid Director: Tara Miller

800-322-9235 ext. 8515

Ellsworth Community College (ECC), operated by Iowa Valley Community College District, offers 34 career-oriented degree programs that combine classroom training with on-the-job experience to prepare graduates for employment.

ECC also offers Associate in Arts degrees that transfer easily toward baccalaureate degrees at most four-year colleges and universities.

Specific vocational-tech programs are Accounting, Agribusiness, Agricultural Science, Apparel Merchandising, Biotechnology, Business Administration, Carpentry, Computer Applications, Computer Science, Conservation Technology, Construction Technology, Criminal Justice, Equine Management, Farm Management, Fire Science, Laboratory Technology, Marketing, Medical Assisting, Merchandising & Retail Management, Microsoft Office Specialist, Nursing (Associate Degree), Nursing (Practical), Office Administration/Computer Applications, Renewable Energy, and Swine Management.



HAWKEYE COMMUNITY COLLEGE

1501 E. Orange Road • Waterloo, IA 50701

Home Page: www.hawkeyecollege.edu

County: Black Hawk

Setting: Urban

Accredited by: Higher Learning
Commission of the NCA

Calendar System: Semester

Enrollment: 6,343

Full Time Tuition & Fees:

Full Time: \$3,072

Per Credit Hour: \$121

Est. Off-Campus Room & Board:

\$5,720

Est. Books and Supplies: \$940

Admissions Director: David Ball

319-296-4000 or 800-670-4743

FAFSA Code: 004595

County Population: 128,000

Control/Affiliation: State/Local

Highest Offering or Degree: Associate

Types of Programs: Terminal Occupational
below the BA and college transfer

Priority Deadline for Aid Filing: July 1

Minimum Admission Requirement:

High school diploma, GED or Assessment

Financial Aid Director:

Lois Mulbrook

319-296-4020



Hawkeye is a comprehensive community college offering college transfer courses and more than 45 vocational areas of training. The College has earned a reputation for small hands-on classes utilizing cutting-edge technology. Academic programs are offered in health, business, agriculture and natural resources, engineering technology, power technology, arts, and human studies.

Hawkeye's two-year transfer program allows students to complete the first two years of their four-year degree and transfer to the college or university of their choice. In fact, Hawkeye is the number one source of new students to the University of Northern Iowa.

Hawkeye's continuing education program provides many opportunities to acquire workplace

skills, gain industry certifications, or learn a new hobby. The College partners with businesses and community organizations to provide needed training services including customized programs.

INDIAN HILLS COMMUNITY COLLEGE

525 Grandview Avenue • Ottumwa, IA 52501

Other Campus: Centerville

Home Page: www.indianhills.edu

County: Wapello

Setting: Agricultural/
Industrial Community

Accredited by: Higher Learning
Commission of the NCA

Calendar System: Quarter

Enrollment: 5,137

Tuition & Fees:

Full Time: \$3,120

Per Credit Hour: \$130

Est. On-Campus Room & Board: \$4,530

Est. Books and Supplies: \$1,416

FAFSA Code: 008298

County Population: 30,000

Control/Affiliation: State/Local

Highest Offering or Degree: Associate

Types of Programs: Terminal Occupational
below the BA, 2 years creditable toward a BA

Priority Deadline for Aid Filing: July 1

Minimum Admission Requirement:

Ability to Benefit

Financial Aid Office: Jo Altheide

641-683-5234 or 800-726-2585

Admissions Director: Jane Sapp

641-683-5153 or 800-726-2585



Indian Hills Community College offers nationally recognized, state-of-the-art advanced technology programs, a strong two-year academic transfer/arts & sciences curriculum, outstanding health occupation fields, and a fun environment, all on two beautiful campuses in Ottumwa and Centerville.

Check out Laser/Electro-optics, Robotics/Automation, Computer Systems/Networks, and Electronics/Telecommunications or perhaps professional level instruction in Computer Programming, Aviation Pilot Training and Aviation Maintenance Technology.

Student activities abound, including wide-ranging campus activities, music and drama presentations, nationally competitive intercollegiate athletics, and intramural sports. Setting Indian Hills apart is its unique campus schedule: just four days per week, with classes held Monday through Thursday. Add that to four terms per year and you have maximum flexibility.

IOWA CENTRAL COMMUNITY COLLEGE

One Triton Circle • Fort Dodge, IA 50501

Other Campuses: Storm Lake and Webster City

Home Page: www.iowacentral.edu

County: Webster

Setting: Agricultural/Industrial Community

Accredited by: Higher Learning Commission of the NCA

Calendar System: Semester

Enrollment: 5,905

Tuition & Fees:

Per Credit Hour (in-state): \$133

Per Credit Hour (out-of-state): \$193

On-Campus Room & Board: \$5,075

Est. Books and Supplies: \$1,000

FAFSA Code: 004597

County Population: 38,346

Control/Affiliation: State/Local

Highest Offering or Degree: Associate

Types of Programs: Vocational-Technical Arts & Sciences College Transfer

Priority Deadline for Aid Filing: March 1

Minimum Admission Requirement:

Open Admission

Admissions Director:

Angie Martin

800-362-2793 ext. 1006

Financial Aid Director:

Jenny Theesfeld

800-362-2793 ext. 1035



Iowa Central Community College is committed to preparing students for the responsibilities of tomorrow by focusing on academics, personal and professional growth and relating well to people. Our vision is to increase the pool of well-rounded citizens who are fully prepared to meet their professional commitments, enrich their lives through service and improve the quality of life for themselves. We offer growth opportunities that will enable students to make their mark on the world. Combining a challenging and rewarding academic environment within a positive and compassionate atmosphere provides an advantage that is unique to Iowa Central.

IOWA LAKES COMMUNITY COLLEGE

19 S. Seventh Street • Estherville, IA 51334

Other Campuses: Algona, Emmetsburg, Spencer and Spirit Lake

Home Page: www.iowalakes.edu

County: Emmet

Setting: Agricultural Community

Accredited by: Higher Learning Commission of the NCA

Calendar System: Semester

Enrollment: 3,915

Tuition & Fees:

Full Time: \$4,396

On-Campus Room & Board: \$4,800

Est. Books and Supplies: \$940

Dean of Enrollment Management:

Julie Carlson

800-242-5106

FAFSA Code: 001864

County Population: 10,050

Control/Affiliation: State/Local

Highest Offering or Degree: Associate

Types of Programs: Arts & Sciences, Vocational, Career Option, 2 years credit towards a BA

Priority Deadline for Scholarships: April 1

Minimum Admission Requirement:

HS Diploma or GED

Financial Aid Director:

John Beneke

800-242-5108 ext. 229

The picturesque Iowa Great Lakes Region provides the setting for Iowa Lakes Community College. The college is located in the heart of the northwest quadrant of the state of Iowa.

Iowa Lakes has developed a unique and respected role as a comprehensive community college. Founded in 1967,

Iowa Lakes Community College has provided quality, affordable education to the residents of northwest Iowa and southwest Minnesota for more than three decades. Iowa Lakes' five campuses and interactive distance learning system facilitate educational access for rural residents. In addition to "traditional" learning opportunities, diversified offerings of online courses and continuing education enable part-time students to upgrade skills and raise their standards of living through evening and weekend courses. The college is dedicated to serving the changing educational needs of the communities and students of the region.



IOWA WESTERN COMMUNITY COLLEGE

2700 College Road, Box 4C • Council Bluffs, IA 51502

Other Campus: Clarinda
Home Page: www.iwcc.edu

County: Pottawattamie

Setting: Suburban

Accredited by: Higher Learning
Commission of the NCA

Calendar System: Semester

Enrollment: 6,100

Tuition & Fees:

Full Time: \$2,988

Per Credit Hour: \$119

On-Campus Room & Board: \$3,690

Est. Books and Supplies: \$1,014

FAFSA Code: 004598

County Population: 89,000

Control/Affiliation: State/Local

Highest Offering or Degree: Associate

Types of Programs: Terminal Occupational
below the BA, 2 years creditable toward a BA

Priority Deadline for Aid Filing: July 1

Minimum Admission Requirement: HS

Diploma or GED

Admissions Director: Chris LaFerla
800-432-5852

Financial Aid Director: Blaine Duisternars
800-432-5852

Situated on 250 wooded acres in southwest Iowa, Iowa Western Community College (IWCC) offers high school students from throughout the area quality educational opportunities at an affordable price. IWCC offers more than 90 college programs of study to meet the needs of each individual. Students will find a safe and vibrant campus atmosphere and instructors who truly care about helping their students succeed.

Students can focus on a career in one of our challenging associate degree programs, or work toward a bachelor's degree with confidence knowing that their credits will easily transfer to top four-year universities in the area. IWCC's technical programs offer state-of-the-art technology and hands-on experience, one of the many reasons why IWCC graduates are well respected and considered among the best in the work force.



KIRKWOOD COMMUNITY COLLEGE

6301 Kirkwood Blvd., SW • P.O. Box 2068 • Cedar Rapids, IA 52406

Home Page: www.kirkwood.edu

County: Linn

Setting: Urban

Accredited by: Higher Learning
Commission of the NCA

Calendar System: Semester

Enrollment: 17,841

Tuition:

Per Credit Hour (in-state): \$118

Per Credit Hour (out-of-state): \$143

Per Credit Hour (intl. students): \$236

Est. Off-Campus Room & Board:
\$3,800

Est. Books and Supplies: \$1,410

FAFSA Code: 004076

County Population: 198,903

Control/Affiliation: State/Local

Highest Offering or Degree: Associate

Types of Programs: Terminal Occupational
below the BA, 2 years creditable toward a BA

Priority Deadline for Aid Filing: July 1

Minimum Admission Requirement:

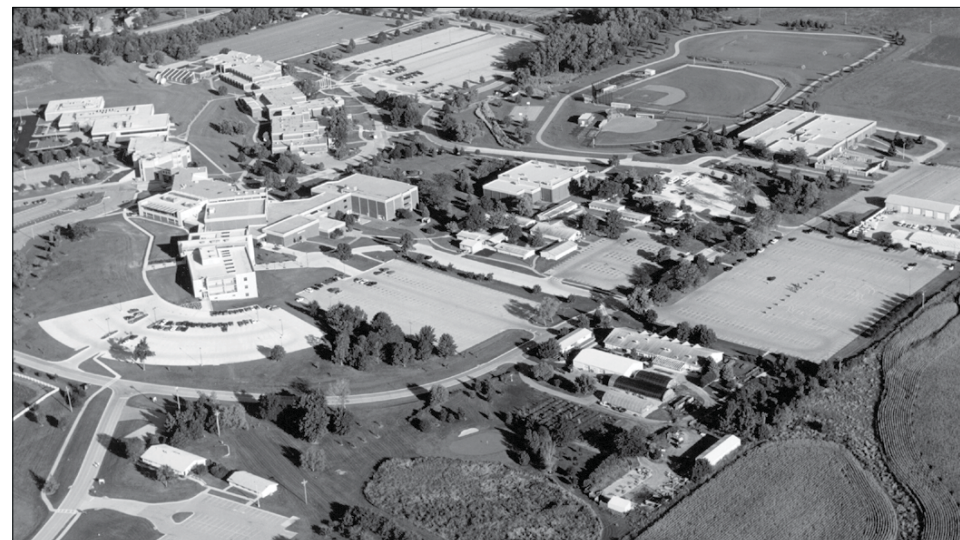
Ability to benefit from attendance

Admissions Director: Doug Bannon
800-332-2055 or 319-398-5517

Financial Aid Director: Peg Julius
319-398-1274

Kirkwood is a comprehensive community college serving the vocational and college transfer educational needs of recent high school graduates, as well as older adults needing education for career or personal needs. In addition to more than 100 credit programs, Kirkwood provides one of the largest continuing education programs in the nation, as well as customized training for area employers. In addition to its 675-acre Cedar Rapids campus, Kirkwood provides educational services in 11 Learning Centers throughout the seven counties served by the college.

Kirkwood provides a full complement of services for students, including personal and vocational counseling, and placement support. The average age of our students is 24. Kirkwood is serving a growing number of international students, as well as people throughout Iowa.



MARSHALLTOWN COMMUNITY COLLEGE

Iowa Valley Community College District
3700 South Center Street • Marshalltown, IA 50158

Home Page: www.iavalley.edu/mcc

County: Marshall

Setting: Agricultural Community/
Suburban

Accredited by: Higher Learning
Commission of the NCA

Calendar System: Semester

Enrollment: 1,860

Tuition & Fees:
Full Time: \$4,590

On-Campus Room & Board: \$5,680

Est. Books and Supplies: \$1,000

Admissions Director: Deana Inman
641-844-5712
or 866-622-4748 ext. 5712

FAFSA Code: 001875

County Population: 26,100

Control/Affiliation: State/Local

Highest Offering or Degree: Associate

Types of Programs: Arts and Sciences,
Vocational, Career Option, 2 years
creditable toward a BA

Priority Deadline for Aid Filing: July 1

Minimum Admission Requirement:
HS Diploma or GED

Financial Aid Director: Chloe Webb
641-844-5708
or 866-622-4748 ext. 5708



Marshalltown Community College, operated by the Iowa Valley Community College District, offers 23 career-oriented degree programs that provide the knowledge and hands-on training needed to enter the workplace. MCC also offers Associate in Arts degrees that transfer toward baccalaureate degrees at most four-year colleges and universities.

Specific vocational-technical programs are Accounting, Broadcast Technology, Business Administration, Carpentry, Child Development, Computer Applications, Computer Network Management, Computer Science, Construction Technology, Criminal Justice, Dental Assisting, Fisher Controls Process Management Technology, Hospitality Management, Industrial Maintenance Technology, Machine Trades/Tool and Die, Marketing, Mechanical Design/CAD Technology, Mechanical Design/Virtual Reality Technology, Microsoft Office Specialist, Nursing (Associate Degree), Nursing (Practical), Office Administration/Computer Applications, and Sustainable and Entrepreneurial Agriculture.

MUSCATINE COMMUNITY COLLEGE

Eastern Iowa Community College District
152 Colorado Street • Muscatine, IA 52761

Home Page: www.eicc.edu

County: Muscatine

Setting: Small Urban

Accredited by: Higher Learning
Commission of the NCA

Calendar System: Semester

Enrollment: 1,711

Tuition & Fees:
Full Time: \$3,136
Per Credit Hour: \$112

Est. On-Campus Room & Board:
\$5,742

Est. Books and Supplies: \$1,600

Admissions Director: Katie Watson
563-288-6012 or 800-351-4669

FAFSA Code: 001882

County Population: 41,772

Control/Affiliation: State/Local

Highest Offering or Degree: Associate

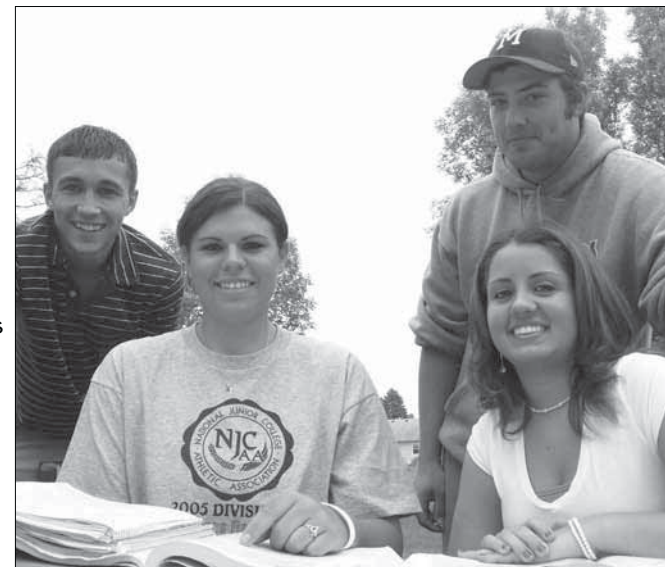
Types of Programs: College Transfer Arts and
Sciences; Career/Technical

Priority Deadline for Aid Filing: April 1

Minimum Admission Requirement:
Open Admission

Financial Aid Officer: Debi Beatty
563-288-6060

Muscatine Community College is part of the Eastern Iowa Community College District, which also includes Clinton and Scott Community Colleges. The district offers more than 40 career education programs and an equal number of college transfer concentrations. The colleges received the maximum accreditation from the North Central Association and work closely with Iowa's Regent institutions to ensure transferability of credits. Technology programs are kept up-to-date due to a strong relationship with the business community.



NORTH IOWA AREA COMMUNITY COLLEGE

500 College Drive • Mason City, IA 50401

Home Page: www.niacc.com

County: Cerro Gordo

Setting: Agricultural/Industrial Community

Accredited by: Higher Learning
Commission of the NCA

Calendar System: Semester

Enrollment: 3,273

Tuition & Fees:

Full Time: \$3,691

Per Credit Hour: \$129.04

On-Campus Room & Board: \$4,806

Est. Books and Supplies: \$834

FAFSA Code: 001877

County Population: 46,447

Control/Affiliation: State/Local

Highest Offering or Degree: Associate

Types of Programs: Transfer, Career, Career
Option, Continuing Education

Priority Deadline for Aid Filing: March 1

Minimum Admission Requirement:

Ability to benefit from attendance

Admissions Director: Rachel McGuire

641-422-4104 or 888-466-4222

Financial Aid Director: Mary Bloomingdale

641-422-4351 or 888-466-4222

North Iowa Area Community College (NIACC) has served the North Iowa region for 85 years. The college operates a main campus in Mason City, a growing community located between Minneapolis and Des Moines. The countryside campus encompasses more than 500 acres of land, including contemporary instructional and recreational facilities, as well as lake side student housing. NIACC offers the first two years toward a bachelor's degree in most fields and nearly 40 career programs in Business, Industrial Technology, Agriculture, and Health.



NORTHEAST IOWA COMMUNITY COLLEGE

Box 400 • Calmar, IA 52132

10250 Sundown Rd. • Peosta, IA 52068

Home Page: www.nicc.edu

County: Winneshiek & Dubuque

Setting: Agricultural Community

Accredited by: Higher Learning
Commission of the NCA

Calendar System: Semester

Enrollment: 2,959 Peosta/ 2,435 Calmar

Tuition & Fees:

Full Time: \$4,768

Per Credit Hour: \$149

Est. Off-Campus Room & Board: \$5,535

Est. Books and Supplies: \$1,600

Admissions Manager/Peosta:

Kristi Streif

800-728-7367 ext. 319

Financial Aid Officer/Peosta:

Kim Baumler

800-728-7367 ext. 212

FAFSA Codes: 004587 Calmar; 012634 Peosta

County Population: 20,934 & 90,000

Control/Affiliation: State/Local

Highest Offering or Degree: Associate

Types of Programs: Technical and Vocational,
2 years creditable toward a BA

Priority Deadline for Aid Filing: July 1

Minimum Admission Requirement:

Applicants must complete one of the following:
Complete Accuplacer testing, submit ACT
scores, or submit an official copy of previous
college transcript

Admissions Director/Calmar: Martha Keune

800-728-2256 ext. 376

Financial Aid Director/Calmar: Jeff Murphy

800-728-2256 ext. 447



Northeast Iowa Community College (NICC) is a comprehensive community college serving the transfer, technical, and vocational education needs of the region's residents, businesses and industries. NICC offers the Associate of Arts degree and general education courses that readily transfer to four-year colleges and universities, as well as leading-edge vocational and technical program options.

The campuses at Peosta and Calmar, along with conveniently located centers in Cresco, downtown Dubuque, Waukon, New Hampton, and Oelwein, feature modern and attractive facilities. Every campus and center is equipped with ICN classrooms and computer labs so students can earn a quality, two-year degree close to home.

Recent studies show that 85% of NICC students graduating from technical or vocational programs find employment or continue their education within the first six months after graduation

NORTHWEST IOWA COMMUNITY COLLEGE

603 West Park Street • Sheldon, IA 51201

Home Page: www.nwicc.edu

County: O'Brien

Setting: Agricultural Community

Accredited by: Higher Learning
Commission of the NCA

Calendar System: Semester

Enrollment: 2,108

Tuition & Fees:

Full Time: \$3,720

Est. Off-Campus Room & Board: \$4,896

Est. Books and Supplies:

9-month - \$1,030

Director of Enrollment Management:

Lisa Story

800-352-4907

FAFSA Code: 004600

County Population: 14,000

Control/Affiliation: State/Local

Highest Offering or Degree: Associate

Types of Programs: Terminal Occupational
below the BA, 2 years creditable
toward a BA

Priority Deadline for Aid Filing: April 1

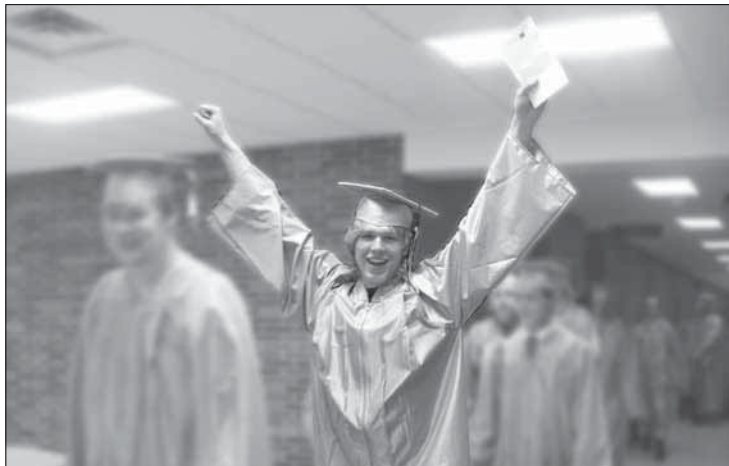
Minimum Admission Requirement:

Ability to benefit from attendance

Financial Aid Director:

Karna Hofmeyer

800-352-4907



Northwest Iowa Community College offers both vocational technical programs and arts and science transfer courses— Over 40 programs to choose from.

For students who have chosen the baccalaureate degree track, NCC is a smart place to start a college education. It's more affordable to get your first two years at NCC and then transfer to a 4-year university. Small class sizes ensure personal attention needed to succeed.

The technical programs can prepare you in two years or less with skills needed in some of the largest and fastest growing occupations. In addition to many well-known established programs, NCC offers 4 programs which can not be found anywhere else in the state of Iowa: Powerline, Industrial Instrumentation and Control, Advanced Standing Electrical Technology, and Heavy Equipment. Instructors are eager to share their "on the job" experience with their students.

SCOTT COMMUNITY COLLEGE

Eastern Iowa Community College District • 500 Belmont Road • Bettendorf, IA 52722

Home Page: www.eicc.edu

County: Scott

Setting: Urban

Accredited by: Higher Learning
Commission of the NCA

Calendar System: Semester

Enrollment: 5,173

Tuition & Fees:

Full Time: \$3,136

Per Credit Hour: \$112

Est. Off-Campus Room & Board:

\$7,290

Est. Books and Supplies: \$1,600

Admissions Specialist:

Catherine Petersen

563-441-4007

FAFSA Code: 004074

County Population: 158,668

Control/Affiliation: State/Local

Highest Offering or Degree: Associate

Types of Programs: College Transfer Arts
and Sciences; Career/Technical

Priority Deadline for Aid Filing: April 1

Minimum Admission Requirement:

Open Admission

Financial Aid Officer:

Jeannine Ingelson

563-441-4040



Scott Community College is part of the Eastern Iowa Community College District, which also includes Clinton and Muscatine Community Colleges. The district offers more than 40 career education programs and an equal number of college transfer concentrations. The colleges received the maximum accreditation from the North Central Association and work closely with Iowa's Regent institutions to ensure transferability of credits. Technology programs are kept up-to-date due to a strong relationship with the business community.

SOUTHEASTERN COMMUNITY COLLEGE

1500 W. Agency Road • P.O. Box 180 • West Burlington, IA 52655-0180

Other campus: Keokuk

Home Page: www.scciaowa.edu

County: Des Moines

Setting: Urban

Accredited by: Higher Learning
Commission of the NCA

Calendar System: Semester

Enrollment: 3,754

Tuition & Fees:

Per Credit Hour (in-state): \$126

Per Credit Hour (out-of-state): \$131

On-Campus Room & Board: \$5,420

Est. Books and Supplies: \$1,014

Senior Enrollment Officer:

Dana Chrisman

866-SCC-IOWA ext. 5017 WB

Kari Bevans

866-SCC-IOWA ext. 1928 KEO

FAFSA Code: 004603

County Population: 40,885

Control/Affiliation: State/Local

Highest Offering or Degree: Associate

Types of Programs:

Terminal Occupational below the BA,
2 years creditable toward a BA

Priority Deadline for Aid Filing: July 1

Minimum Admission Requirement:

Ability to benefit from attendance

Financial Aid Director:

Ean Freels

800-828-7322 ext. 5015

It is the mission of Southeastern Community College (SCC) to provide quality, affordable and accessible life long learning opportunities that meet or exceed the expectations of the people we serve. SCC has two main campuses, West Burlington and Keokuk, and also offers classes at the Fort Madison and Mt. Pleasant centers. SCC offers more than 35 Career Education Programs including Respiratory Care, Chemical Dependency Counselor, and Information Technology. General education courses are offered during the day, evening, and online.



SOUTHWESTERN COMMUNITY COLLEGE

1501 W. Townline Street • Creston, IA 50801

Home Page: www.swcciaowa.edu

County: Union

Setting: Agricultural Community

Accredited by: Higher Learning

Commission of the NCA

Calendar System: Semester

Enrollment: 1,680

Tuition & Fees:

Full Time: \$3,990

Per Credit Hour: \$133

On-Campus Room & Board: \$4,550

Est. Books and Supplies: \$1,450

Admissions Coordinator:

Lisa Carstens

641-782-7081 or 800-247-4023

FAFSA Code: 001857

County Population: 12,309

Control/Affiliation: State/Local

Highest Offering or Degree: Associate

Types of Programs: 2 years creditable toward
a BA, Adult and Continuing Education

Priority Deadline for Aid Filing: July 1

Minimum Admission Requirement:

Ability to benefit from attendance

Financial Aid Director:

Tracy Davis

641-782-1434 or 800-247-4023

Southwestern Community College (SWCC) is a comprehensive community college located in Creston. SWCC students receive solid foundations in liberal arts, and credits transfer easily to four-year institutions. Career and technical education programs are offered in a number of occupational and career education fields for students choosing to complete hands-on education and go directly into the workforce.

Southwestern Community College has center locations in Red Oak and Osceola. The college offers online learning opportunities for students as well.



WESTERN IOWA TECH COMMUNITY COLLEGE

4647 Stone Avenue • Box 5199 • Sioux City, IA 51106-5199

Home Page: www.witcc.edu

County: Woodbury

Setting: Urban

Accredited by: Higher Learning

Commission of the NCA

Calendar System: Semester

Enrollment: 7,665

Tuition & Fees:

Per Credit Hour (in state): \$133.50

On-Campus Room & Board: \$4,887

Est. Books and Supplies: \$1,000

Admissions Director:

Lora Vander Zwaag

712-274-6400 or 800-352-4649

FAFSA Code: 004590

County Population: 120,000

Control/Affiliation: State/Local

Highest Offering or Degree: Associate

Types of Programs: Terminal Technical and
Arts & Sciences below the BA

Priority Deadline for Aid Filing: July 1

Minimum Admission Requirement:

HS Diploma, GED or ability to benefit

Financial Aid Director:

Don Duzik

712-274-6402



Western Iowa Tech Community College offers a broad range of programs to nearly 8,000 students registered for credit classes. Among last fall registrants, 47 percent enrolled in arts and sciences and 53 percent were enrolled in technical programs. Throughout the year, 749 students graduated with one or more awards. The vast majority of these graduates (97 percent) became employed or continued their education. More than 140 employers hired WITCC graduates. These strong numbers reflect the college's attractive features: affordable tuition, flexible scheduling, active campus life, and quality education.



IOWA'S NURSING & HEALTHCARE PROFESSION COLLEGES

ALLEN COLLEGE

1825 Logan Avenue • Waterloo, IA 50703

Home Page: www.allencollege.edu

County: Black Hawk

Setting: Urban

Accredited by: Iowa Board of Nursing,
Higher Learning Commission of the NCA,
NLN, JRCERT, ACN

Calendar System: Semester

Enrollment: 482

Tuition & Fees: \$14,995

On-Campus Room & Board: \$7,157

Est. Books and Supplies: \$1,063

Admissions Counselor:

Michelle Koehn
319-226-2002

Recruiters:

Molly Quinn & Holly Risetter
319-226-2001

Financial Aid Coordinator:

Kathie S. Walters
319-226-2003

FAFSA Code: 030691

County Population: 128,347

Control/Affiliation: Iowa Health System, Inc.

Highest Offering or Degree: Master's

Types of Programs: Associate of Science in
Radiography (ASR), Bachelor of Science in
Nursing (Traditional, 15 month Accelerated
and RN-BSN options), Bachelor of Health
Science (Nuclear Medicine Technology,
Medical Laboratory Science, and Diagnostic
Medical Sonography), Master of Science
in Nursing (Nurse Practitioner tracks in:
Acute Care, Adult Psychiatric Mental Health,
Family and Gerontological, as well as Nurse
Educator and Nurse Leadership)

Priority Deadline for Aid Filing: July 1

Minimum Undergraduate Admission

Requirements: HS ranking in the upper half of
graduating class or GED equivalent, 20 ACT
score, 3.0 on all HS coursework, 2.7 on all
college coursework



Allen College is a quality, private, multipurpose college for Allied Health, Nursing and Radiography. To provide general education courses, Allen College has developed unique relationships with Hawkeye Community College in Waterloo, Loras College in Dubuque, University of Northern Iowa in Cedar Falls and Wartburg College in Waverly.

With a tradition of more than 75 years of excellence in healthcare education, Allen College is an excellent collegiate choice. It is located on a beautiful campus in Waterloo, Iowa. The metropolitan area combines the diversity of a large city with the friendliness of a small town.

DES MOINES UNIVERSITY

3200 Grand Avenue • Des Moines, IA 50312

Home Page: www.dmu.edu

County: Polk

Setting: Urban

Calendar System: Varied

Enrollment: 1,800

Tuition:

Osteopathic Medicine - \$37,630

Podiatric Medicine - \$27,320

Physician Assistant - \$25,960

Physical Therapy - \$20,850

Post Professional DPT -

\$443 per credit hour (alumni)

\$494 per credit hour (non-alumni)

MPH and MHA - \$484 per credit hour

MSA and MBS - \$9,600/ year

Est. Off-Campus Room & Board: \$19,592

Est. Books and Supplies: \$3,358

FAFSA Code: 015616

County Population: 400,000

Control/Affiliation: Independent, Nonprofit

Highest Offering or Degree: Doctorate

Types of Programs: D.O., D.P.M., D.P.T.,
Postprofessional D.P.T., M.S. in Physician
Assistant Studies, M.P.H., M.H.A., M.S. in
Anatomy and M.S. in Biomedical Sciences

Priority Deadline for Aid Filing: April 15

Minimum Admission Requirement: Varies

Director of Admission:

Jamie Rehmann

515-271-1451

Financial Aid Director:

Mary Payne

515-271-1470

Founded in 1898, Des Moines University comprises three colleges offering nine graduate degrees. A health sciences university since adding the colleges of health sciences and podiatric medicine in 1981, the programs share a collective strength — a collaborative campus community where students and faculty come together in the pursuit of knowledge.

Des Moines University offers degree programs in medicine and the health sciences — nothing else. We share a singular mission to educate distinctive health professionals committed to patient-centered health promotion, the application of evidence-based practice and the discovery of knowledge.



MERCY COLLEGE OF HEALTH SCIENCES

928 6th Avenue • Des Moines, IA 50309-1239

Home Page: www.mchs.edu

County: Polk

Setting: Urban

Accredited by: Higher Learning

Commission of the NCA, NLN, NLNAC,
JRCERT, JRCDEMS, CRNE, CAAHEP/ARC-
St., Iowa Board of Nursing

Calendar System: Semester

Enrollment: 778

Tuition & Fees: \$13,500

Est. On-Campus Room & Board: \$4,600

Est. Books and Supplies: \$1,200

Financial Aid Director: Wayne Dille

515-643-6611 or

800-637-2994 ext. 36611

FAFSA Code: 006273

County Population: 400,000

Control/Affiliation: Catholic Health Initiatives

Highest Offering or Degree: Baccalaureate

Types of Programs: Nursing (ASN & BSN),
Physical Therapist Assistant (AS), Radiologic
Technology (AS), Surgical Technology (Cert/AS),
Cardiac and Abdominal Sonography (AS),
Sleep Disorder Technology (Cert/AS), Nuclear
Medicine Technology (Adv. Cert), Health
Care Administration (BS), Health Science-PreMed
(BS), Allied Health (BS), Medical Assisting
(Cert/AS), and Emergency Medical Services -
Paramedic (Cert/AS)

Priority Deadline for Aid Filing: June 30

Minimum Admission Requirement:

See Mercy College website for details

www.mchs.edu/admission-requirements1.cfm

Mercy College of Health Sciences is a Catholic institution of higher education, guided by the pursuit of knowledge and the core values of Mercy: reverence, integrity, compassion, and excellence. Through integration of professional education with liberal arts and sciences, the College prepares graduates for service and leadership in the health care community. If you think you know Mercy College — an institution spanning 110 years of educating healing professionals — we might surprise you.

Our students are among the best and brightest, and come from many different backgrounds, cultures and experiences. They become:

- * Certified Nursing Assistants
- * Clinical Lab Scientists
- * Diagnostic Medical Sonographers
- * Health Care Administration Leaders
- * Medical Assistants
- * Nuclear Medicine Technologists
- * Paramedics
- * Pharmacy Technicians
- * Physical Therapist Assistants
- * Registered Nurses
- * Radiologic Technologists
- * Sleep Technicians
- * Surgical Technologists



Our graduates go everywhere. They embark upon health care careers across the nation and around the world. They also stay right here in Iowa to take care of folks within our own community. Our faculty and staff are talented and dedicated to offering excellent service, and our alumni are among the best in their field.

PALMER COLLEGE OF CHIROPRACTIC

1000 Brady Street • Davenport, IA 52803
• Port Orange, Florida • San Jose, California

Home Page: www.palmer.edu

County: Scott

Setting: Urban

Accredited by: CCE, Higher Learning Commission of the NCA

Calendar System: Trimester in Davenport, Quarters in Florida and California

Enrollment: 2,400

Tuition & Fees: \$28,710

Est. Off-Campus Room & Board: \$18,285

Est. Books and Supplies: \$2,775

FAFSA Code: 012300

County Population: 158,668

Control/Affiliation: Independent, Nonprofit

Highest Offering or Degree: DC, MS
Anatomy and Clinical Research

Priority Deadline for Aid Filing: April 1

Minimum Admission Requirement:
90 Semester Hours of Undergraduate Study

Admissions Office:
800-722-3648, ext. 1

Financial Aid Office:
800-722-3648, ext. 2

The mission of Palmer College of Chiropractic, based upon the Palmer Tenets, is to educate and prepare students to become Doctors of Chiropractic qualified to serve as direct access primary health care providers and clinicians, competent in wellness promotion, health assessment, diagnosis and the chiropractic management of the patient's health care needs. Palmer is committed to advancing the understanding of chiropractic through research; to providing service to the field of chiropractic, including continuing education; and to serving humanity through patient care and community education.



ST. LUKE'S COLLEGE

2720 Stone Park Blvd • Sioux City, IA 51104

Home Page: www.stlukescollege.edu

County: Woodbury

Setting: Urban

Accredited by: Iowa Board of Nursing, Higher Learning Commission of NCA, NLNAC, JRCERT, NAACLS, CAAHEP, CoARC

Calendar System: Semester

Enrollment: 196

Tuition & Fees: \$15,605

Est. Books and Supplies: \$1,550

Admissions Office: Sherry McCarthy
712-279-3149 or
800-352-4660, ext. 3158

FAFSA Code: 007291

County Population: 105,000

Control/Affiliation: St. Luke's Regional Medical Center

Highest Offering or Degree: Associate

Types of Programs: Nursing, Radiologic Technology, Respiratory Care, and Clinical Lab Sciences

Priority Deadline for Aid Filing: March 1

Minimum Admission Requirement: HS GPA of 2.5 or GED and ACT of 19; or college GPA of 2.3 on transferable credit

Coordinator of Financial Aid/ Registrar:
Danelle Johannsen 712-279-3149 or
800-352-4660, ext. 3377



St. Luke's is a two-year, hospital-based institution that offers Associate of Science Degrees in Nursing, Radiologic Technology, and Respiratory Care and a certificate degree in Clinical Lab Sciences. In addition, St. Luke's College offers internships in Computerized Tomography, Mammography, Magnetic Resonance Imaging, and Ultrasound.

The curriculum is designed with a foundation in the biological, physical, and social sciences, integrated with theory and experience in the clinical lab setting. The college emphasizes hands-on, patient care learning. Student involvement with patient care begins early in the first year of study.

OTHER IOWA COLLEGES

BEAUTY, BARBER & MASSAGE THERAPY COLLEGES

American College of Hairstyling
1531 First Avenue SE
Cedar Rapids, IA 52402
Phone: 319-362-1488
Email:
admissions@americancollegeofhair.com
Website: americancollegeofhair.com

American College of Hairstyling
603 E. Sixth Street
Des Moines, IA 50309
Phone: 515-244-0971
E: admissions@americancollegeofhair.com
Website: americancollegeofhair.com

American Hair Academy
910 Avenue G
Fort Madison, IA 52627
319-372-6248
E: bhill@lisco.com

Bio-Chi Institute of Massage Therapy
1925 Geneva Street
Sioux City, IA 51103
712-252-1157
E: contact@bci-ed.com
Website: bci-ed.com

Capri College
2945 Williams Parkway SW
Cedar Rapids, IA 52404
Phone: 800-397-0612
E: cradm@capricollege.com
Website: capricollege.com

Capri College
2540 East 53rd Street
Davenport, IA 52807
Phone: 800-728-1336
E: davadm@capricollege.com
Website: capricollege.com

Capri College
395 Main Street
Dubuque, IA 52001
Phone: 800-728-0712
E: dbqadm@capricollege.com
Website: capricollege.com

College of Hair Design
722 Water Street, Suite 201
Squires Square
Waterloo, IA 50703
Phone: 319-232-9995
E: chd722@aol.com
Website: chd.net

Carlson College of Massage Therapy
11809 County Road X-28
Anamosa, IA 52205
319-462-3402
Website: carlsoncollege.com

Dayton's School of Hair Design
315 N Main Street
Burlington, IA 52601
Phone: 319-752-3193

Dayton's School of Hair Design
23 S. Second Street
Keokuk, IA 52632
Phone: 319-524-6445

E Q School of Hair Design
536 W. Broadway
Council Bluffs, IA 51503
Phone: 712-328-2613
Website: eqschool.net

Faust Institute of Cosmetology
1290 N. Lake Avenue
Storm Lake, IA 50588
Phone: 712-732-6570
E: faustic@nwiowa.com
Website: faustinstitute.com

Faust Institute of Cosmetology
Great Lakes Mall
1543 18th Street
Spirit Lake, IA 51360
Phone: 712-336-3518
E: faustic@nwiowa.com
Website: faustinstitute.com

Iowa School of Beauty
423 S. Ankeny Blvd
Ankeny, IA 50023
Phone: 515-965-3991
E: ankeny.info@iowaschoolofbeauty.com
Website: iowaschoolofbeauty.com

Iowa School of Beauty
112 Nicholas Drive
Marshalltown, IA 50158
Phone: 641-752-4223
E: marshalltown.info@iowaschoolofbeauty.com
Website: iowaschoolofbeauty.com

Iowa School of Beauty
609 W Second Street
Ottumwa, IA 52501
Phone: 641-684-6504
E: ottumwa.info@iowaschoolofbeauty.com
Website: iowaschoolofbeauty.com

Iowa School of Beauty
3320 Line Drive
Sioux City, IA 51106
Phone: 712-274-9733
E: siouxcity.info@iowaschoolofbeauty.com
Website: iowaschoolofbeauty.com

Iowa School of Beauty
3305 70th Street
Urbandale, IA 50322
Phone: 515-278-9939
E: urbandale.info@iowaschoolofbeauty.com
Website: iowaschoolofbeauty.com

Le Mars Beauty College
128 Central Ave SE
Le Mars, IA 51031
Phone: 712-546-4195
Website: lemarsbeautyschool.com

LaJames College of Hairstyling
6322 University Holiday Plaza
Cedar Falls, IA 50613
Phone: 888-880-2106
E: lajames@lajames.net
Website: lajames.net

LaJames International College
5205 N Brady Street
Davenport, IA 52807
Phone: 888-880-2106
E: lajames@lajames.net
Website: lajames.net

LaJames International College
8805 Chamberly Blvd.
Johnston, IA 50131
Phone: 888-880-2106
E: lajames@lajames.net
Website: lajames.net

LaJames College of Hairstyling
2419 Fifth Avenue S.
Fort Dodge, IA 50501
Phone: 888-880-2106
E: lajames@lajames.net
Website: lajames.net

LaJames College of Hairstyling
227 E Market
Iowa City, IA 52245
Phone: 888-808-2106
E: lajames@lajames.net
Website: lajames.net

LaJames College
24 2nd St. N.E.
Mason City, IA 50401
641-424-2161
E: lajames@lajames.com
Website: lajames.com

The Salon Professional Academy
1550 South First Avenue
Iowa City, IA 52240
Phone: 888-248-2958
Web: thesalonprofessionalacademy.com

Total Look School of Cosmetology
806 West 3rd Street
Cresco, IA 52136
Phone: 563-547-3624
E: totallook@iowatelecom.net
Website: totallookschool.com

THEOLOGICAL SEMINARIES

Faith Baptist Bible College & Theological Seminary
1900 NW Fourth Street
Ankeny, IA 50023
Phone: 888-FAITH-4-U
Website: faith.edu

University of Dubuque
Theological Seminary
2000 University Avenue
Dubuque, IA 52001
Phone: 563-589-3170
Website: udts.dbq.edu

Wartburg Theological Seminary
333 Wartburg Place
Dubuque, IA 52004-5004
Phone: 563-589-0200
Website: wartburgseminary.edu

MEDICAL TECHNOLOGY SCHOOLS

Covenant Medical Center School
of Radiologic Technology
3421 W Ninth Street
Waterloo, IA 50702
Phone: 319-272-7296
E: HelfrickK@covhealth.com
Website:
covhealth.com/radiology_school.asp

Iowa Methodist Medical Center Schools
1200 Pleasant Street
Des moines, IA 50309
General Phone: 515-241-6883
Website: www.iowahealth.org

Mercy Medical Center - Sioux City
801 Fifth Street
Sioux City, IA 51101
Phone: 712-279-2371
E: smithmk@mercyhealth.com

Mercy/St. Luke's School of
Radiologic Technology
1026 "A" Avenue NE
Cedar Rapids, IA 52402
Phone: 319-369-7097
E: schmitdd@crstlukes.com
Website: isrt.org/mstl.htm

St. Luke's Clinical Laboratory Science
Program in Medical Technology
1026 "A" Avenue NE
Cedar Rapids, IA 52402
Phone: 319-369-7309
E: sojkan@crstlukes.com

CAREER/TECHNICAL COLLEGES

Hamilton Technical College
1011 E. 53rd Street
Davenport, IA 52807
Phone: 563-386-3570
E: admissions@hamiltontechcollege.com
Website: hamiltontechcollege.com

OUT-OF-STATE INSTITUTIONS REGISTERED IN IOWA

Bellevue University
Main Campus
1000 Galvin Road South
Bellevue, NE 68005
Toll Free: 800-756-7920
Website: www.bellevue.edu

Bellevue University
2200 River Road
Council Bluffs, IA

Bellevue University
2700 College Road
Council Bluffs, IA 51503

Bellevue University
North 4th Street
Red Oak, IA 51566

Bellevue University
4647 Stone Avenue
Sioux City, IA 51102

Colorado Technical University
3901 West 59th Street
Sioux Falls, SD 57108
Phone: 605-361-0200
Website: www.coloradotech.edu

Colorado Technical University
Location to be determined
Sioux City, IA

Hannibal La Grange College
Main Campus
2800 Palmyra Road
Hannibal, MO 63401
Phone: 573-221-3675
Website: www.hlg.edu

Hannibal La Grange College
335 Messenger Road
Keokuk, IA 52641

ITT Technical Institute
1860 NW 118th Street, Suite 110
Clive, IA 50325
Phone: 515-327-5500
Toll Free 877-327-5500
Website: www2:itt-tech.edu

University of Phoenix
6600 Westown Parkway
West Des Moines, IA 50266
Phone: 515-267-8218
Toll Free: 866-229-5743
Website: www.phoenix.edu

Vatterott College
7000 Fleur Drive
Des Moines, IA 50321
Phone: 515-309-9000
E: desmoines@vatterott-college.edu
Website: vatterott-college.com

Viterbo University Iowa Center
4949 Westown Parkway Suite 195
West Des Moines, IA 50266
Phone: 888-235-2200
Website: www.viterbo.edu

* Please contact each institution for more information on financial aid opportunities.

i have a plan IOWA



Whoever you want to be...

Whatever you want to do...

Wherever you want to go...

You need a plan to make it happen.

- Plan your high school courses
- Explore careers & set goals
- Prepare for the ACT/SAT
- Plan, apply and pay for college

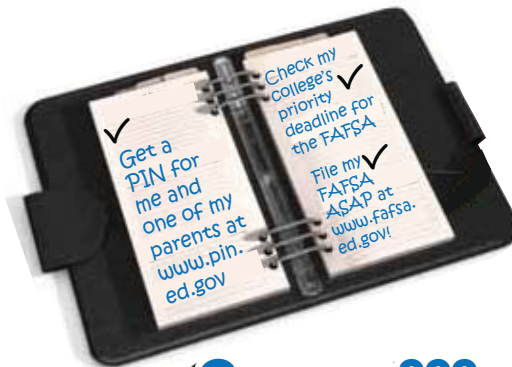


www.IHaveaPlanIowa.gov

Powered by Iowa College Aid - Your Financial Aid Connection

NEED MONEY FOR COLLEGE???

IT'S FREE! IT'S FAST! IT'S EASY!



The Free Application for Federal Student Aid (FAFSA) is used by colleges and universities to determine your eligibility for scholarships, grants, loans, work-study and other financial aid programs. Filing your FAFSA online at www.fafsa.gov is the quickest and most accurate way to file. You should submit your FAFSA as soon after **January 1st** as possible, making sure you meet any college or state deadlines (the deadline for state of Iowa grants is July 1). You **and** one of your parents should apply for a PIN at www.pin.ed.gov before filing. Remember, the FAFSA is a **FREE** application.

QUESTIONS???

Iowa College Aid can help connect you with the essential resources and services you need to obtain money for college. When it comes to your questions, you have our undivided attention!

877-272-4456

www.IowaCollegeAid.gov



IowaCollegeAid.gov
Your Financial Aid Connection

ODDS OF
GETTING HURT
WHILE MOWING
THE LAWN:

1 IN 3,623*

ODDS OF BEING
DISSATISFIED
WITH YOUR JOB'S
RETIREMENT PLAN:

1 IN 25*

Your Mission:

Learn Your Growing Power

You've heard that April showers bring May flowers, but do you know what saving \$5 a day can bring you? Compare the total amounts earned when you start saving at ages 22, 32 and 45. Begin saving now and watch your money grow!

Start saving at age 22...

- \$5/ day
- 9% compounding interest in a mutual fund
- \$944,468 at age 65

Start saving at age 32...

- \$5/ day
- 9% compounding interest in a mutual fund
- \$373,194 at age 65

Start saving at age 45...

- \$5/ day
- 9% compounding interest in a mutual fund
- \$102,280 at age 65

MISSION
[MONEY CONTROL]

803 E. 12th St. FL 5th., Des Moines, IA 50318
P: 877-272-4456
E: info@iowacollegeaid.gov

* funny2.com/odds.htm
^ www.bookodds.com

Learn how Mission: Money Control can help you make smart money decisions at www.IowaCollegeAid.gov



www.IowaCollegeAid.gov • Your Financial Aid Connection

Our website connects you to with the college resources you need :

scholarships • grants • student loans • loan forgiveness

financial literacy • career planning • education plans • choosing a college

preparing for college • planning for college • paying for college



IowaCollegeAid.gov

Your Financial Aid Connection

603 E. 12th Street FL 5th • Des Moines, IA 50319
877-272-4456 • info@iowacollegeaid.gov