



## CATTLE ON FEED

Cattle and calves on feed for slaughter market in Iowa for all feedlots totaled 1,205,000 on November 1, 2012 according to the USDA, National Agricultural Statistics Service, Iowa Field Office. The inventory is up 5 percent from October 1, 2012 and up 2 percent from November 1, 2011. Feedlots with a capacity greater than 1,000 head had 590,000 head on feed, unchanged from last month but up 4 percent from last year. Feedlots with a capacity less than 1,000 head had 615,000 head on feed, up 10 percent from last month and up 1 percent from last year.

Placements during October totaled 278,000 head, an increase of 55 percent from last month but unchanged from last year. Feedlots with a capacity greater than 1,000 head placed 146,000 head, up 64 percent from last month and up 7 percent from last year. Feedlots with a capacity less than 1,000 head placed 132,000 head. This is up 47 percent from last month but down 6 percent from last year.

Marketings for October were 218,000 head, up 33 percent from last month and up 2 percent from last year. Feedlots with a capacity greater than 1,000 head marketed 143,000 head, up 64 percent from last month and up 24 percent from last year. Feedlots with a capacity less than 1,000 head marketed 75,000 head, down 3 percent from last month and down 23 percent from last year. Other disappearance totaled 5,000 head.

### All Cattle on Feed, Iowa

Item	Lots 1,000+ Head	Lots Less than 1,000 Head	All Lots
	(1,000 Head)	(1,000 Head)	(1,000 Head)
Cattle on Feed, October 1, 2012 .....	590	560	1,150
October Placements .....	146	132	278
October Marketings .....	143	75	218
October Other Disappearance .....	3	2	5
Cattle on Feed, November 1, 2012 .....	590	615	1,205

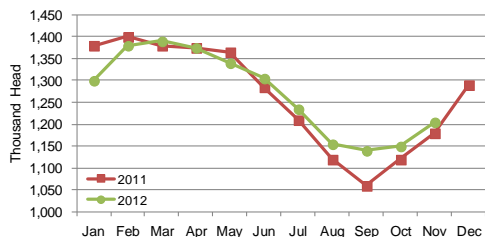
### Cattle on Feed: Number on Feed, Placements, Marketings, and Other Disappearance by Month, 1,000+ Capacity Feedlots

[Cattle and calves on feed are animals for slaughter market being fed a ration of grain or other concentrates and are expected to produce a carcass that will grade select or better.]

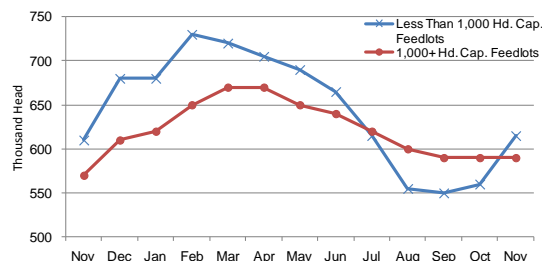
State	Cattle on Feed November 1			Placements during October			Marketings during October			October Disappearance other than Slaughter <sup>1</sup>		
	2011	2012	'12 as % of '11	2011	2012	'12 as % of '11	2011	2012	'12 as % of '11	2011	2012	'12 as % of '11
	(1,000 Head)	(1,000 Head)	(Percent)	(1,000 Head)	(1,000 Head)	(Percent)	(1,000 Head)	(1,000 Head)	(Percent)	(1,000 Head)	(1,000 Head)	(Percent)
Arizona .....	292	265	91	32	19	59	19	25	132	1	1	100
California .....	490	480	98	54	62	115	49	54	110	5	3	60
Colorado .....	1,140	1,030	90	230	195	85	155	160	103	5	5	100
Idaho .....	225	240	107	55	55	100	48	44	92	2	1	50
<b>Iowa .....</b>	<b>570</b>	<b>590</b>	<b>104</b>	<b>137</b>	<b>146</b>	<b>107</b>	<b>115</b>	<b>143</b>	<b>124</b>	<b>2</b>	<b>3</b>	<b>150</b>
Kansas .....	2,400	2,220	93	440	380	86	340	365	107	20	25	125
Nebraska .....	2,470	2,480	100	665	590	89	390	425	109	15	15	100
Oklahoma .....	390	345	88	86	65	76	63	54	86	3	1	33
South Dakota ...	240	220	92	75	71	95	39	45	115	1	1	100
Texas .....	3,000	2,670	89	560	450	80	465	440	95	35	20	57
Washington .....	226	248	110	59	74	125	40	38	95	1	1	100
Other States ....	446	466	104	99	73	74	64	44	69	8	2	25
United States ...	11,889	11,254	95	2,492	2,180	87	1,787	1,837	103	98	78	80

<sup>1</sup> Includes death loss, movement from feedlots to pasture, and shipments to other feedlots for further feeding.

**Cattle on Feed, Inventory on all Feedlots, Iowa: 2011-2012**



**Cattle on Feed, Inventory by Feedlot Capacity, Iowa: Past 12 Months**



**MILK PRODUCTION**

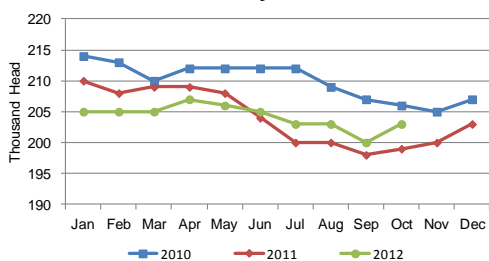
Milk production in Iowa during October 2012 totaled 364 million pounds, up 5 million pounds from October 2011, according to the USDA, National Agricultural Statistics Service – *Milk Production* report. The average number of milk cows on hand during the month, at 203,000 head, was up 4,000 head from October 2011. Production per cow averaged 1,795 pounds, down 10 pounds from October 2011.

**Milk Cows and Production: Selected States, October 2011 and 2012**

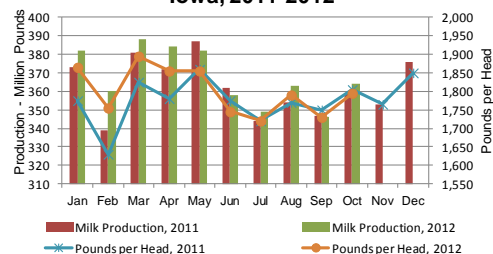
State	Milk Cows <sup>1</sup>		Milk Per Cow <sup>2</sup>		Milk Production <sup>2</sup>		
	2011	2012	2011	2012	2011	2012	Change from 2011
	(1,000 Head)	(1,000 Head)	(Pounds)	(Pounds)	(Million Pounds)	(Million Pounds)	(Percent)
Arizona .....	192	180	1,865	1,900	358	342	-4.5
California .....	1,776	1,778	1,930	1,860	3,428	3,307	-3.5
Colorado .....	131	135	1,955	2,005	256	271	5.9
Florida .....	120	123	1,350	1,310	162	161	-0.6
Idaho .....	581	577	1,930	1,960	1,121	1,131	0.9
Illinois .....	98	100	1,600	1,580	157	158	0.6
Indiana .....	173	173	1,720	1,750	298	303	1.7
<b>Iowa .....</b>	<b>199</b>	<b>203</b>	<b>1,805</b>	<b>1,795</b>	<b>359</b>	<b>364</b>	<b>1.4</b>
Kansas .....	123	126	1,765	1,810	217	228	5.1
Michigan .....	369	374	1,925	1,950	710	729	2.7
Minnesota .....	466	465	1,555	1,605	725	746	2.9
Missouri .....	95	93	1,180	1,180	112	110	-1.8
New Mexico .....	332	324	2,100	2,025	697	656	-5.9
New York .....	610	610	1,725	1,770	1,052	1,080	2.7
Ohio .....	268	270	1,600	1,630	429	440	2.6
Oregon .....	122	123	1,705	1,690	208	208	-
Pennsylvania .....	538	533	1,620	1,630	872	869	-0.3
Texas .....	435	430	1,870	1,795	813	772	-5.0
Utah .....	87	88	1,800	1,810	157	159	1.3
Vermont .....	134	133	1,560	1,595	209	212	1.4
Virginia .....	96	95	1,450	1,455	139	138	-0.7
Washington .....	266	261	1,965	1,960	523	512	-2.1
Wisconsin .....	1,264	1,271	1,715	1,785	2,168	2,269	4.7
23-State Total <sup>3</sup> .....	8,475	8,465	1,790	1,791	15,170	15,165	-

<sup>1</sup> Includes dry cows, excludes heifers not yet fresh. <sup>2</sup> Excludes milk sucked by calves. <sup>3</sup> As of February 2009, the 23 States are Arizona, California, Colorado, Florida, Idaho, Illinois, Indiana, Iowa, Kansas, Michigan, Minnesota, Missouri, New Mexico, New York, Ohio, Oregon, Pennsylvania, Texas, Utah, Vermont, Virginia, Washington, and Wisconsin.

**Milk Cow Inventory, Iowa, 2010-2012**



**Milk Production & Pounds per Head, Iowa, 2011-2012**



## MONTHLY PRICES

Preliminary November 2012 price received in Iowa for corn was \$6.80 according to the latest USDA, National Agricultural Statistics Service – *Agricultural Prices* report. This is a \$1.05 increase from November 2011. Soybean prices increased \$2.10 to \$13.70 compared to November 2011 and oat prices increased \$.07 to \$3.80.

All hay prices increased \$67.00 to \$204.00 compared to November 2011. Alfalfa hay prices increased \$70.00 to \$213.00 and other hay prices increased \$48.00 to \$137.00.

### Prices Received by Farmers

<u>IOWA</u>	November 2011	October 2012	November <sup>1</sup> 2012
-----Dollars-----			
Corn ..... Bu	5.75	6.82	6.80
Soybeans ..... Bu	11.60	14.10	13.70
Oats ..... Bu	3.73	4.00	3.80
All Hay, baled ..... Ton	137.00	188.00	204.00
Alfalfa Hay, baled ..... Ton	143.00	211.00	213.00
Other Hay, baled ..... Ton	89.00	133.00	137.00
Milk Cows <sup>2</sup> ..... Hd	(NA)	1410.00	(NA)
Milk (whls) ..... Cwt	21.20	22.30	23.50
-----Dollars-----			
<u>UNITED STATES</u>	November 2011	October 2012	November <sup>1</sup> 2012
-----Dollars-----			
Corn ..... Bu	5.83	6.77	6.71
Soybeans ..... Bu	11.70	14.20	13.80
Oats ..... Bu	3.38	3.95	3.70
All Hay, baled ..... Ton	174.00	193.00	193.00
Alfalfa Hay, baled ..... Ton	193.00	212.00	215.00
Other hay, baled ..... Ton	124.00	146.00	144.00
Hogs, all ..... Cwt	64.40	62.00	62.10
Brw & Gilts ..... Cwt	64.50	62.70	62.30
Sows ..... Cwt	60.80	43.30	56.70
Beef Cattle ..... Cwt	120.00	123.00	123.00
Cows ..... Cwt	66.00	77.30	76.40
Strs & Hfrs ..... Cwt	126.00	127.00	129.00
Calves ..... Cwt	153.00	164.00	162.00
Milk Cows <sup>2</sup> ..... Hd	(NA)	1390.00	(NA)
Milk (whls) ..... Cwt	20.50	21.50	22.10
Eggs (mkt) <sup>3</sup> ..... Doz	0.862	0.837	1.020

### Prices Index Summary, United States

<u>PRICES RECEIVED INDEX</u>	Nov 2011	Oct 2012	Nov 2012	Nov 2011	Oct 2012	Nov 2012
1910-14=100			1990-92=100			
All Products .....	1167	1328	1288	184	209	203
Crops .....	1020	1174	1138	206	237	230
Food grains .....	754	838	839	238	265	265
Feed grains & hay .....	900	1044	1035	252	293	290
Oilseeds .....	1178	1350	1341	215	246	245
Lvstk .....	1204	1249	1290	157	163	168
Meat Animals .....	1611	1637	1636	158	161	161
Dairy Prod. ....	1261	1323	1360	157	165	169
Poultry & eggs .....	434	467	515	154	166	183
<u>PRICES PAID INDEX</u>	Nov 2011	Oct 2012	Nov 2012	Nov 2011	Oct 2012	Nov 2012
1910-14=100			1990-92=100			
Prices Paid .....	2746	2907	2893	206	218	217
Production .....	2124	2259	2244	219	233	231
Feed .....	1110	1395	1369	227	286	280
Livestock & pltry .....	2104	2078	2125	165	163	166
Seeds .....	3327	3581	3581	336	362	362
Fertilizer .....	1279	1206	1210	349	329	330
Chemicals .....	910	946	939	147	153	152
Fuels .....	2850	2831	2725	369	367	353
Ratio .....	(NA)	(NA)	(NA)	89	96	94
Parity Ratio <sup>1</sup> .....	42	46	45	(NA)	(NA)	(NA)

(NA) Not available.

<sup>1</sup> Ratio of index of prices received to index of prices paid for commodities and services, interest, taxes, and farm wage rates.

(NA) Not available.

<sup>1</sup> Preliminary

<sup>2</sup> Animals sold for dairy herd replacement only. Prices estimated in January, April, July, and October.

<sup>3</sup> Eggs are mid-month prices.

## All Layers and Egg Production: Selected States, October 2011 and 2012

[Data may not add to totals due to rounding. Data by type of flock not shown for some states to avoid disclosing individual operations, data included in United States totals.]

State	Table egg layers in flocks 30,000 & above		All layers on hand		Eggs per 100 layers		Total egg production		Table egg production	
	2011	2012	2011	2012	2011	2012	2011	2012	2011	2012
	(Thousands)	(Thousands)	(Thousands)	(Thousands)	(Number)	(Number)	(Million eggs)	(Million eggs)	(Million eggs)	(Million eggs)
Illinois .....	4,417	3,896	4,623	4,158	2,444	2,405	113	100	110	96
Indiana .....	21,871	24,200	22,559	25,014	2,332	2,275	526	569	514	554
<b>Iowa .....</b>	<b>52,301</b>	<b>51,568</b>	<b>53,235</b>	<b>52,498</b>	<b>2,309</b>	<b>2,408</b>	<b>1,229</b>	<b>1,264</b>	<b>1,213</b>	<b>1,249</b>
Michigan .....	10,389	11,963	10,540	12,113	2,419	2,435	255	295	(D)	(D)
Minnesota .....	9,640	9,542	10,137	9,962	2,387	2,429	242	242	233	235
Missouri .....	5,684	6,295	7,097	7,782	2,409	2,287	171	178	(D)	(D)
Ohio .....	27,225	27,464	27,740	27,920	2,343	2,346	650	655	(D)	(D)
Wisconsin .....	4,168	4,416	4,733	5,021	2,387	2,270	113	114	(D)	(D)
Other States .....	11,700	12,290	19,989	19,852	2,181	2,211	436	439	305	321
United States .....	277,525	283,818	335,884	340,473	2,317	2,321	7,783	7,903	6,734	6,883

PRESRRT STD  
POSTAGE & FEES PAID  
USDA  
PERMIT NO. G-38

AGRI NEWS IS PUBLISHED BY USDA NATIONAL AGRICULTURAL  
STATISTICS SERVICE IOWA FIELDS OFFICE, 210 WALNUT ST. RM.  
833, DES MOINES IA 50309. POSTMASTER: SEND ADDRESS  
CHANGES TO AGRI-NEWS, C/O SD AGRICULTURAL STATISTICS,  
PO BOX 5068 SIOUX FALLS, SD 57117.