

**2009-2010
JUVENILE COURT SERVICES
SCHOOL LIAISON
PROGRAM DATA**

**STATEWIDE
ANNUAL REPORT**

Report Compiled By



A Division of the Iowa Department of Human Rights

JULY 2010

2009-2010 Juvenile Court School Liaison Program Data

This report includes statewide aggregated data collected by Juvenile Court Services School Liaison (JCSL) staff across Iowa. JCSLs* have been providing services to youth since 1994 and have been reporting data to the Iowa Division of Criminal and Juvenile Justice Planning (CJJP) since 2000.

Data are provided to CJJP through statistical summary forms completed by the JCSLs. Because forms are completed only when meaningful contact between a student and a liaison takes place, only a portion of the total population served is reported. Meaningful contact is defined as having at least five contacts within a 60-day period (at any point during the academic year) regarding at least one of the referral reasons supplied on the form. Data are entered into a web-based application by the liaisons and retrieved electronically by CJJP via the internet. Service information is submitted and uploaded only at the end of the academic year.

Data regarding the youth served are reported annually by CJJP. Performance measures pertaining to attendance, trancies, tardies, suspensions, law violations, and grade point average are some of the key data collected and reported. During the 2008-2009 academic year, a notable change in the collection of performance measures included an additional calculation of *Percent of Occurrence*. This allows a user to report performance for youth who exit school during a reporting period. In previous years, if a youth left school before the end of a term, users could not report performance since the reporting period for pre-performance measures had to match that of the reporting period for post-performance measures. Users are now able to enter differing reporting periods. As an example, Percent of Occurrence for a youth with attendance issues is calculated as follows:

$$\text{Days Absent During Period} / \text{Days in Reporting Period} = \text{Percent of Occurrence}$$

With this calculation, a user can enter any number for "Days in Reporting Period" enabling reporting for those youth who did not complete the term.

Another notable change in the collection of performance measures during the 2008-2009 school year was the addition of a check box for "Not Applicable" under each performance category. This box is checked for youth who did not have reportable days or periods for the construct. As an example, if attendance was not an issue for a particular youth and there were no data to report, the JCSL is instructed to respond with NA. In previous years, if a youth had no reportable days missed due to absence, the liaisons reported zeroes for both pre and post performance. This practice affected the reliability of the data, as these youth would have reflected no change in performance in the annual report, when in fact the youth should not have been included in the reporting of the construct.

During the 2009-2010 school year, there were 106 school liaisons who reported on 4,444 students.

* Referred to as School-Based Interventionists in Judicial District 4

2009-2010 Statewide JCSL Program Data

Total Number of Records **4,444**

	<u>N</u>	<u>% of Total</u>		<u>N</u>	<u>% of Total</u>
Records per District			Age		
1	367	8.3%	<7	26	0.6%
2	742	16.7%	7-8	89	2.0%
3	411	9.2%	9-10	234	5.3%
4	846	19.0%	11-12	754	17.0%
5	1,176	26.5%	13-14	1,243	28.0%
6	280	6.3%	15-16	1,388	31.2%
7	465	10.5%	17-20	710	16.0%
8	157	3.5%			
Gender			Median Age 14.8 yrs		
Male	2,732	61.5%	Grade K	10	0.2%
Female	1,712	38.5%	1	20	0.5%
Race			2	63	1.4%
Caucasian	3,483	78.4%	3	26	0.6%
Af Amer	473	10.6%	4	92	2.1%
Hispanic	320	7.2%	5	192	4.3%
Native Am	33	0.7%	6	320	7.2%
Asian/Pacific	39	0.9%	7	553	12.4%
Mixed/Other	96	2.2%	8	685	15.4%
Parent/Guardian Relationship			9	640	14.4%
Parent	3,500	78.8%	10	721	16.2%
Parent & Other	592	13.3%	11	656	14.8%
Foster Parent	50	1.1%	12	466	10.5%
Relative	226	5.1%	Grade Level¹		
Custodian	34	0.8%	Elementary	403	9.1%
Friend	25	0.6%	Middle	1,558	35.1%
Other	17	0.4%	High/Alternative	2,483	55.9%
Cases w/JCS-DHS Workers 1,235 27.8%			Referral Source		
Enrolled in Education Program			School	2,219	49.9%
Yes	4,043	91.0%	JCS	1,277	28.7%
No	401	9.0%	School Liaison	357	8.0%
Exited Before Year End			Self Report	278	6.3%
Yes	282	6.3%	Family	150	3.4%
No	4,162	93.7%	DHS	35	0.8%
Continued From Last Yr 1,365 30.7%			Law Enforcement	105	2.4%
Average Length of Service (Days)			Other	23	0.5%
Overall Average	183.1		Referral Reasons²		
Elementary	207.8		Attendance	846	19.0%
Middle	182.0		Truancy Issues	371	8.3%
High	179.8		Disciplinary	1,625	36.6%
			Law Violations	1,384	31.1%
			GPA/Academic	793	17.8%
			Tardiness	204	4.6%
			Mental Health	422	9.5%
			Other	1,139	25.6%

¹ Grade Level was determined by grade: (K-5=Elementary, 6-8=Middle, 9+=High)

² Referral Reasons will not add up to 100 percent since two responses are possible

2009-2010 SCHOOL LIAISON PROGRAM DATA STATEWIDE PERFORMANCE MEASURES

JCSLs report performance measures only if they have had five meaningful contacts with a student within a 60-day period and submit data only for youth who have reportable days/periods for the given construct. Youth with no reportable days/periods would be included under Not Applicable. For purposes of data collection *Pre-Performance* is defined as the term preceding or including the first contact date with a student and *Post-Performance* indicates the term including or following the last contact date with a student.

2009-2010 PERFORMANCE MEASURES

Measure	# of Students	%	Not Applicable	N/A %	Total # of Occurrences (days, periods, reports)	Average Occurrence	High	Low
Attendance	3,877	87.2%	567	12.8%	47,113	12.2	131.0	0.5
Truancy	1,925	43.3%	2,519	56.7%	18,752	9.7	120.0	0.5
Tardiness	3,212	72.3%	1,232	27.7%	56,045	17.4	232.0	1.0
Suspensions	1,745	39.3%	2,699	60.7%	8,874	5.1	107.0	1.0
Law Violations	1,635	36.8%	2,809	63.2%	2,289	1.4	9.0	1.0
GPA	3,521	79.2%	923	20.8%				

Note - Attendance/Truancy/Suspensions are measured in days, Tardies are measured by class periods and Law Violations count 1 per arrest report

PERFORMANCE MEASURES: PRE-PERFORMANCE TO POST-PERFORMANCE

This table includes data pertaining to the six performance measures and whether or not performance improved, declined, or remained the same between the Pre-Performance and Post-Performance reporting periods:

Measure	Student Performance		
	<i>Declined</i>	<i>Same</i>	<i>Improved</i>
Attendance	42.8%	8.2%	49.0%
Truancy	50.4%	8.8%	40.8%
Tardiness	46.2%	8.4%	45.3%
Suspensions	42.0%	8.3%	49.7%
Law Violations	16.1%	11.8%	72.0%
GPA	41.5%	10.0%	48.5%

The above table indicates a considerable improvement in the reduction of law violations. Of the 1,409 youth with law violations during the pre-performance period, 1,136 (81%) of them had no new violations during the post-performance period.

STATEWIDE PERFORMANCE MEASURES (Continued)

Law Violations By Average Number of Days Missed

The following reports the average number of reported days missed by number of law violations during the academic year.

Average # of Days Missed* Due To:	N	Number of Law Violations			
		0	1	2	3+
Attendance (excused)	3,877	11.5	12.7	15.4	16.4
Truancy (not excused)	1,925	8.6	10.9	11.9	11.3
Suspensions (in or out)	1,745	4.3	5.0	6.3	10.9

Grade Point Average By Average Number of Days Missed

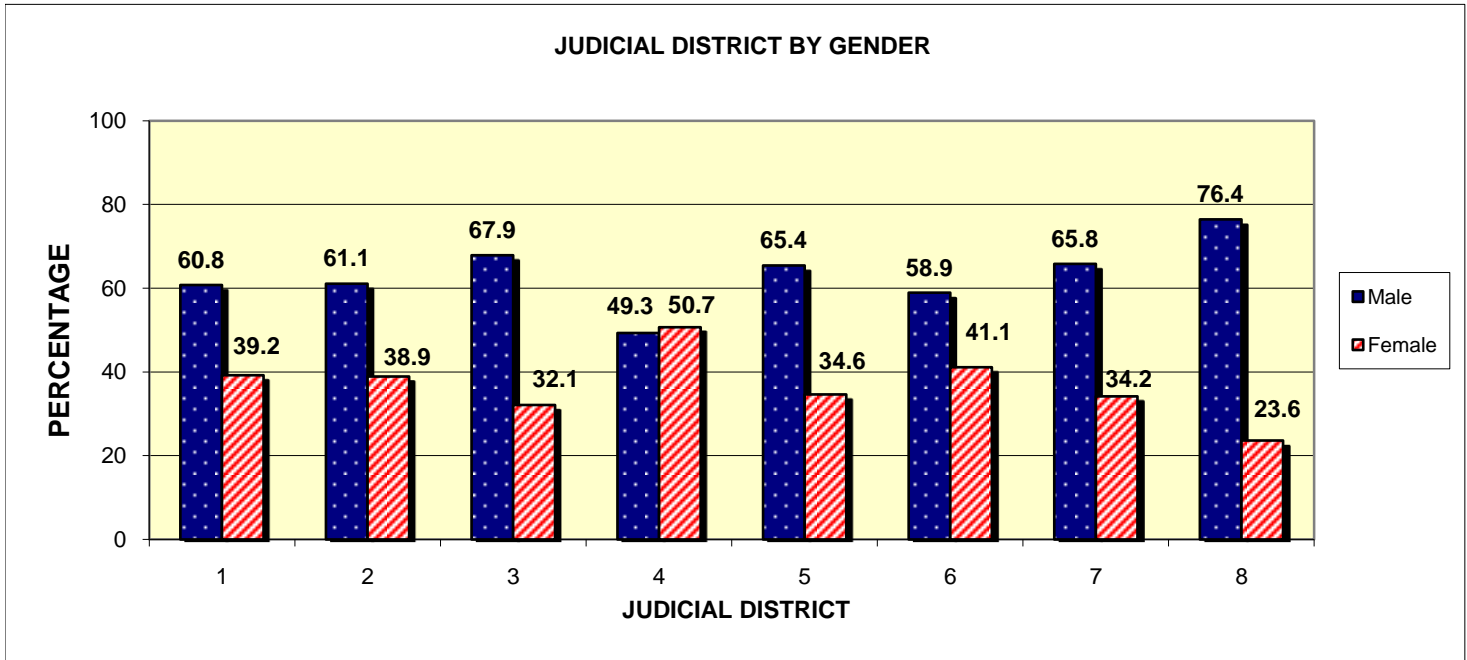
The following reports the average number of reported days missed by grade point average at the end of the academic year.

Average # of Days Missed* Due To:	N	GPA (Post-Performance Period)			
		0.0-1.0	1.01-2.0	2.01-3.0	3.01+
Attendance (excused)	3,047	16.1	13.0	10.6	9.4
Truancy (not excused)	1,534	15.6	8.5	6.4	5.0
Suspensions (in or out)	1,509	6.7	4.9	4.3	3.9

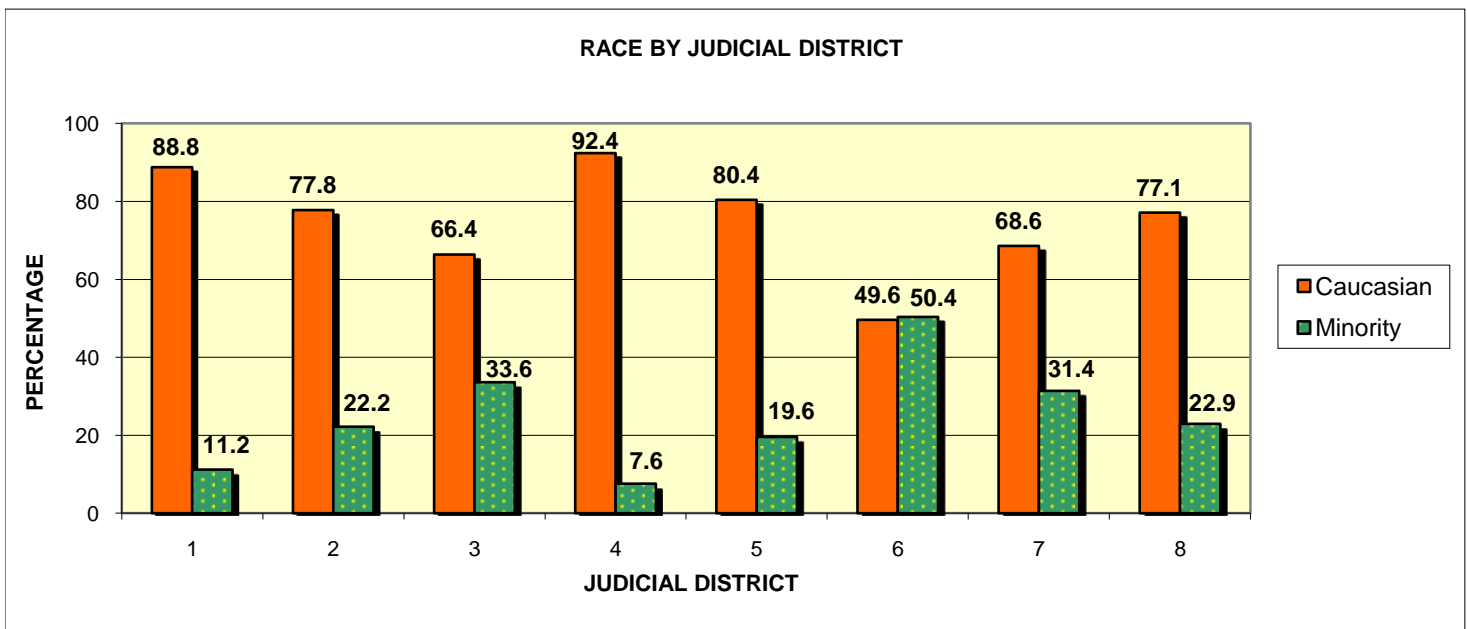
*Only youth with days missed in the given category are counted. For instance, if a youth had law violations, but no absences/truancies/suspensions he or she would not be counted.

Note - The GPA reported is that which was reported at the end of the post-performance period. Only youth with a reported GPA are included.

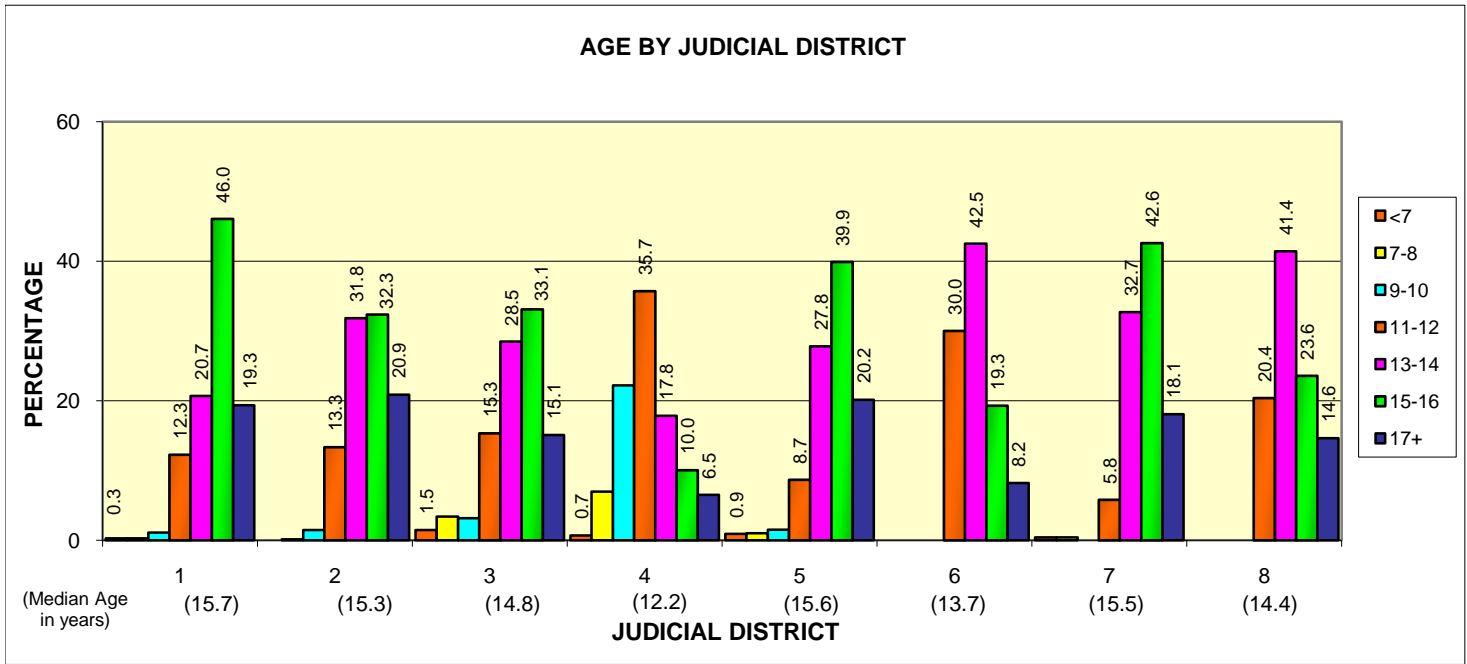
JUVENILE COURT SCHOOL LIAISON PROGRAM DATA 2010 STATEWIDE AGGREGATED DATA BY JUDICIAL DISTRICT



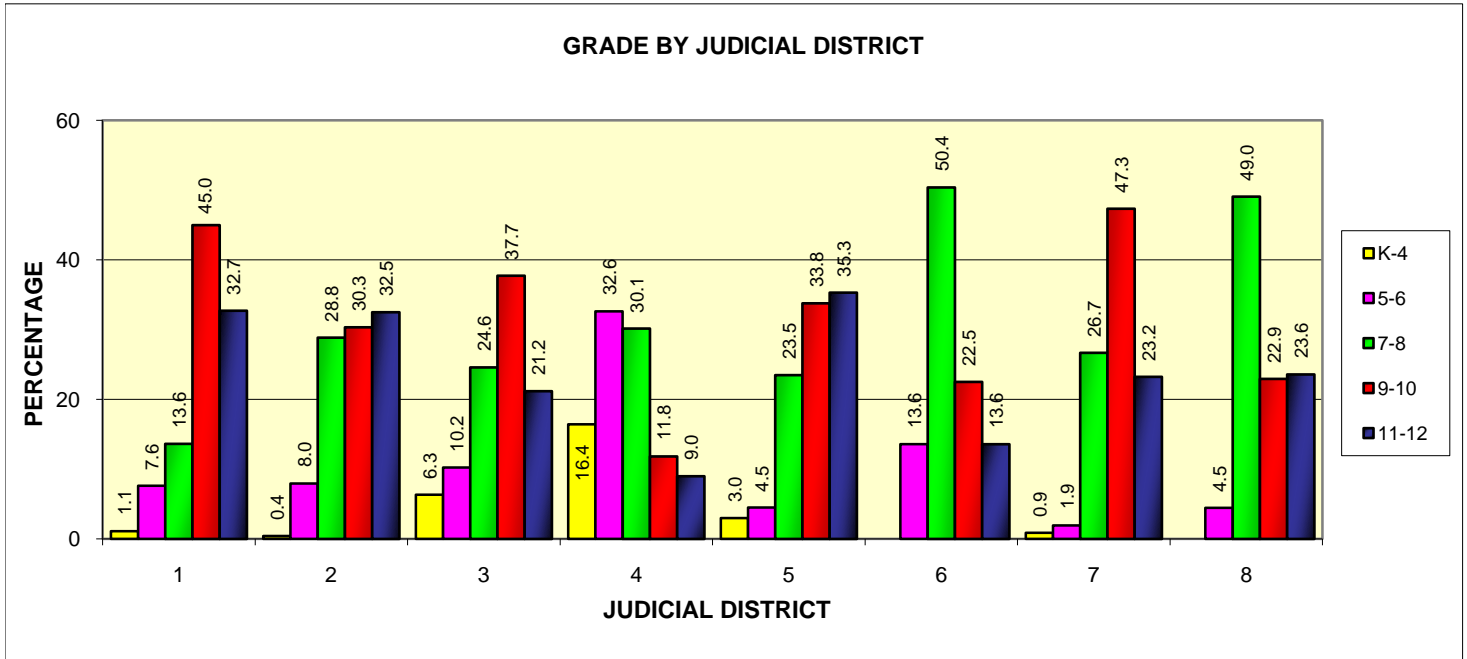
Gender	N	MALE	FEMALE
Statewide %	4,444	61.5%	38.5%



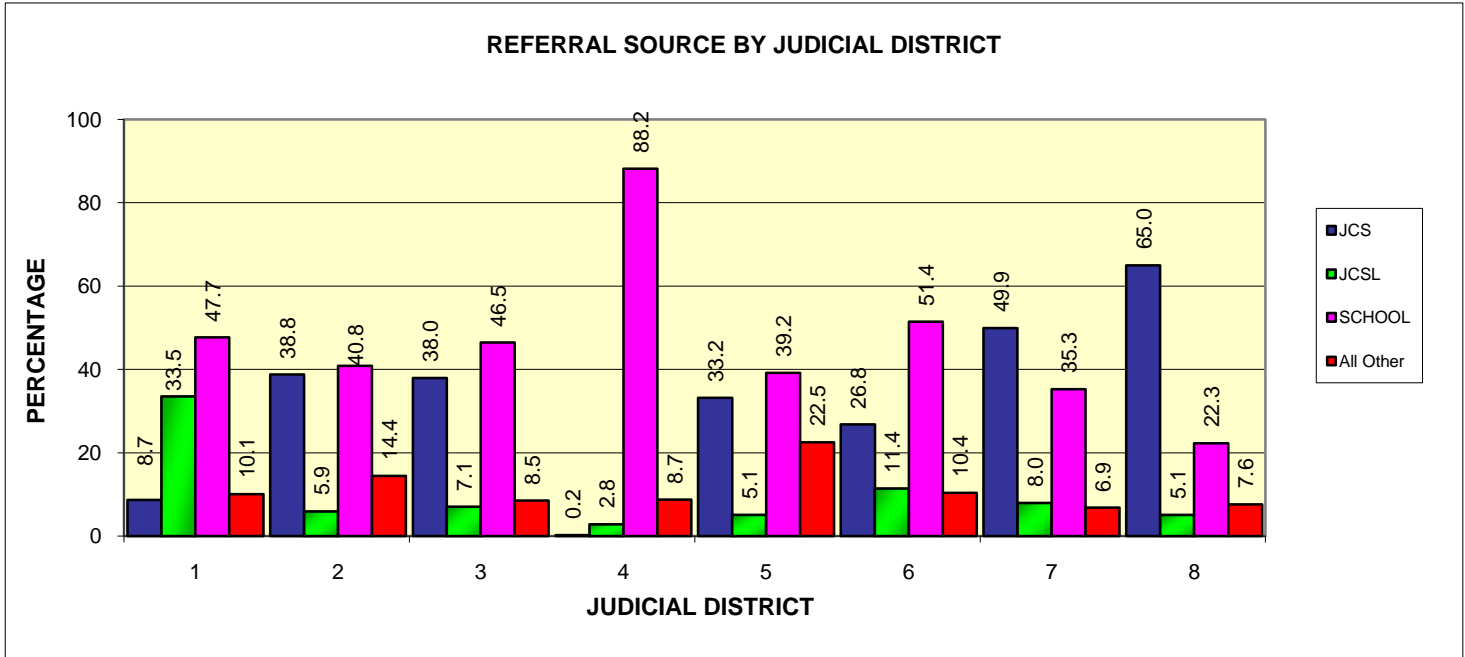
RACE	N	CAUCASIAN	AFRICAN-AMERICAN	HISPANIC	NATIVE AMERICAN	ASIAN/PACIFIC ISLANDER	MIXED/OTHER
Statewide %	4,444	78.4%	10.6%	7.2%	0.7%	0.9%	2.2%



AGE	N	<7	7-8	9-10	11-12	13-14	15-16
Statewide %	4,444	0.6%	2.0%	5.3%	17.0%	28.0%	31.2%
		17+					
		16.0%					



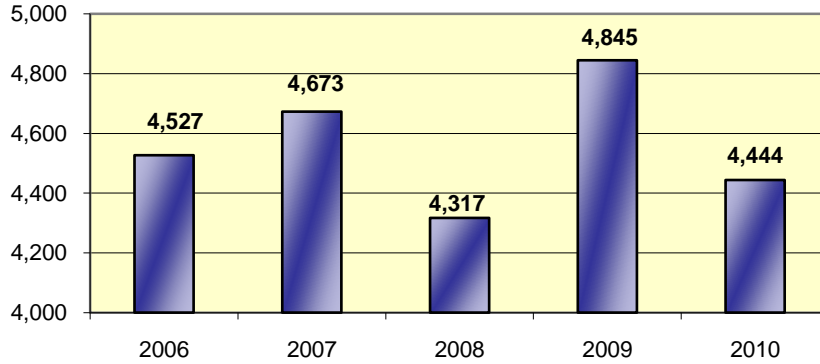
GRADE	N	K-2	3-4	5-6	7-8	9-10	11-12
Statewide %	4,444	2.1%	2.7%	11.5%	27.9%	30.6%	25.2%



REFERRAL SOURCE	N	JCS	JCSL	SCHOOL	DHS/LawEnf	Family/Self	OTHER
Statewide %	4,444	28.7%	8.0%	49.9%	3.2%	9.6%	0.5%

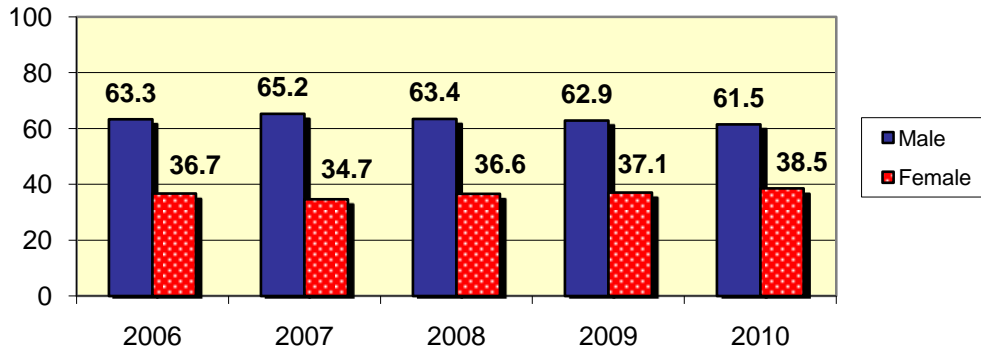
STATEWIDE TRENDS 2006-2010

Number of Records-Statewide

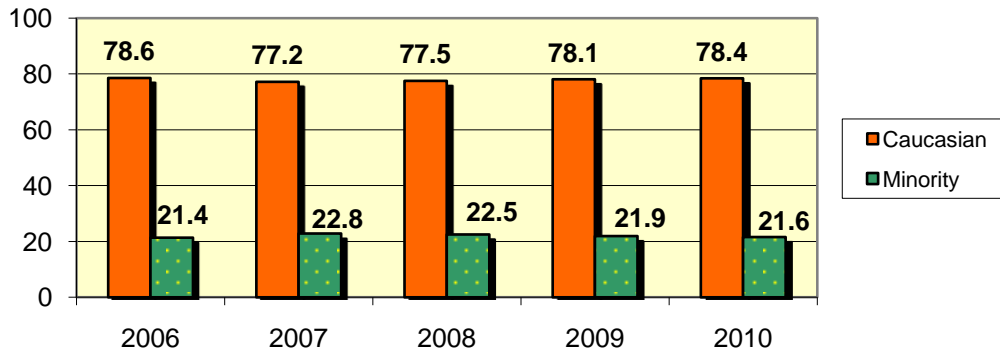


#Liaisons 125 139 125 122 106

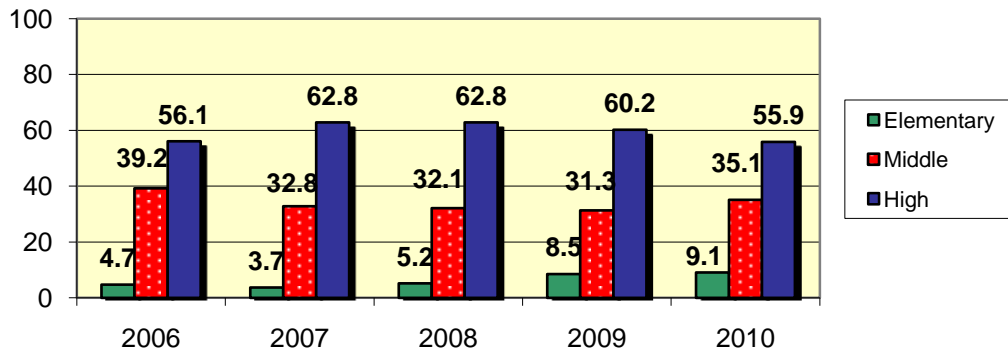
Gender-Statewide



Race - Statewide

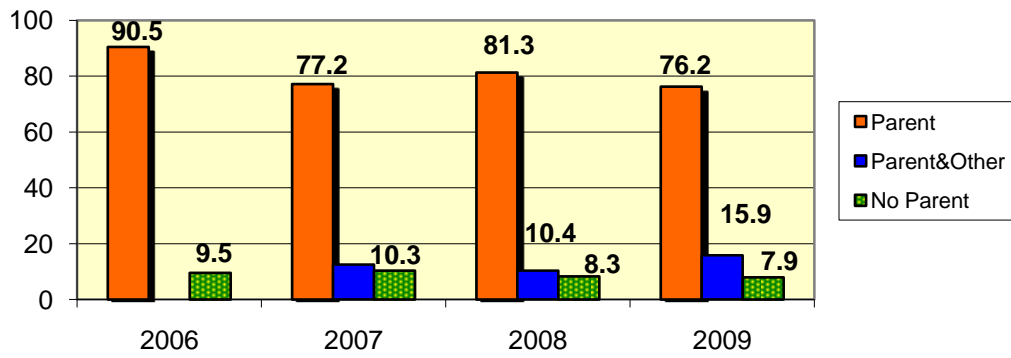


Grade Level - Statewide



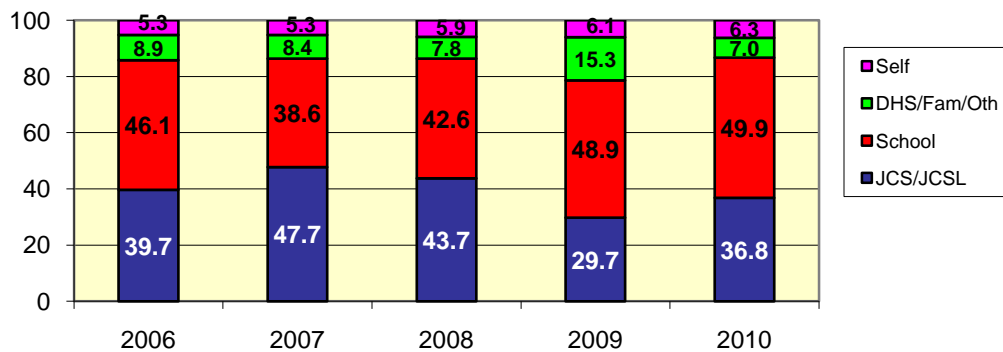
(Youth in Alternative Schools are counted under High School)

Parent/Guardian-Statewide



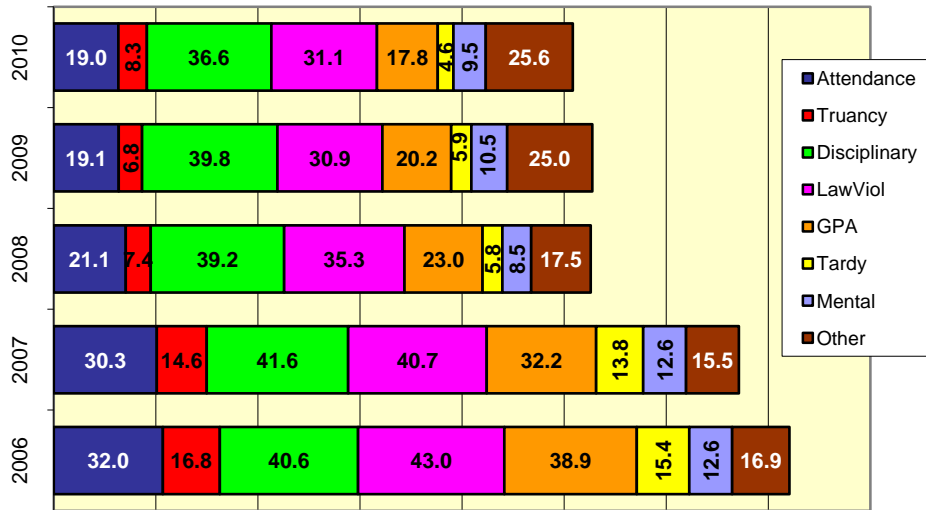
(The category of Parent & Other was added in 2007)

Referral Source - Statewide



(School Liaison referrals are counted under JCS)

Referral Reasons - Statewide



(Percentages in this chart will not add up to 100 as up to two responses are allowed)