

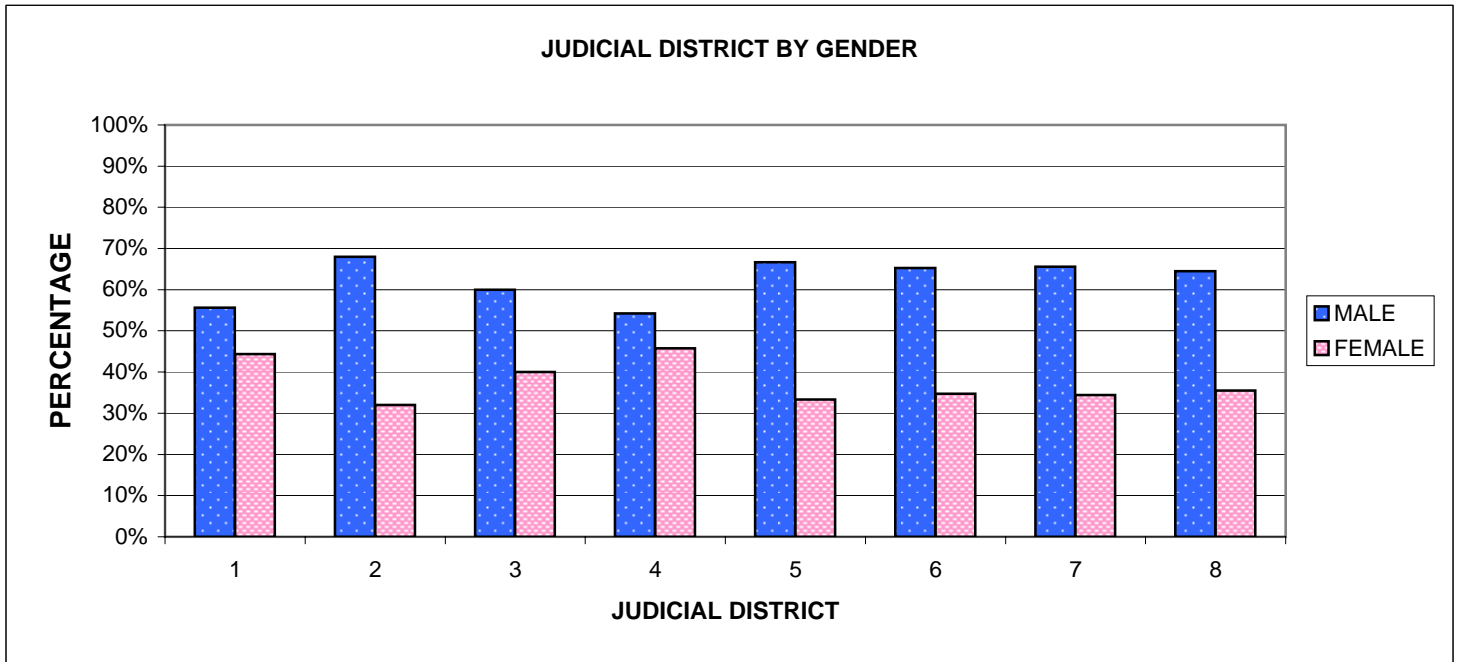
2005-2006
ACADEMIC YEAR
JUVENILE COURT SCHOOL-
BASED LIAISON
STATEWIDE DATA

Criminal and Juvenile Justice Planning
Fall 2006



JUVENILE COURT SCHOOL LIAISON STATISTICAL DATA - GRAPHS

JCSL Conference
September 25-26, 2006



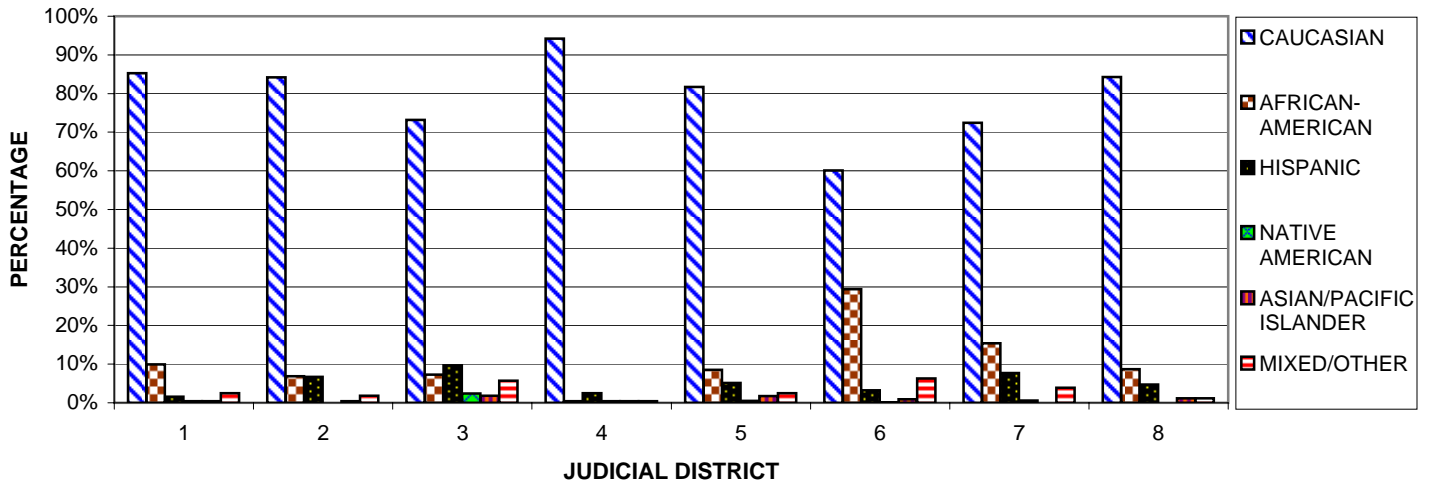
Gender	N	MALE	FEMALE
Statewide %	4,527	63.3%	36.7%

NOTE: Due to rounding, percentages may not add up to 100%.

Complete data tables available upon request.

*Prepared by the Division of Criminal and Juvenile Justice Planning, Iowa Department of Human Rights
 August 2006*

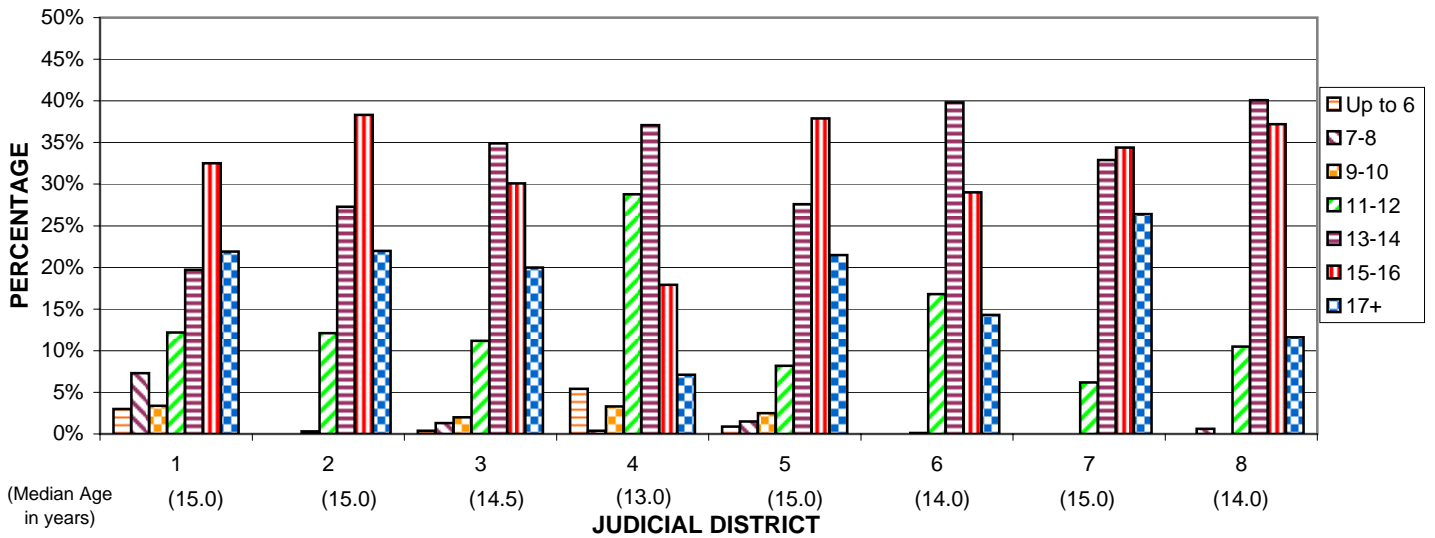
RACE BY JUDICIAL DISTRICT



RACE	N	CAUCASIAN	AFRICAN-AMERICAN	HISPANIC	NATIVE AMERICAN	ASIAN/PACIFIC ISLANDER	MIXED/OTHER
Statewide %	4,527	78.6%	11.6%	5.0%	0.5%	0.9%	3.2%

NOTE: Due to rounding, percentages may not add up to 100%.

AGE BY JUDICIAL DISTRICT

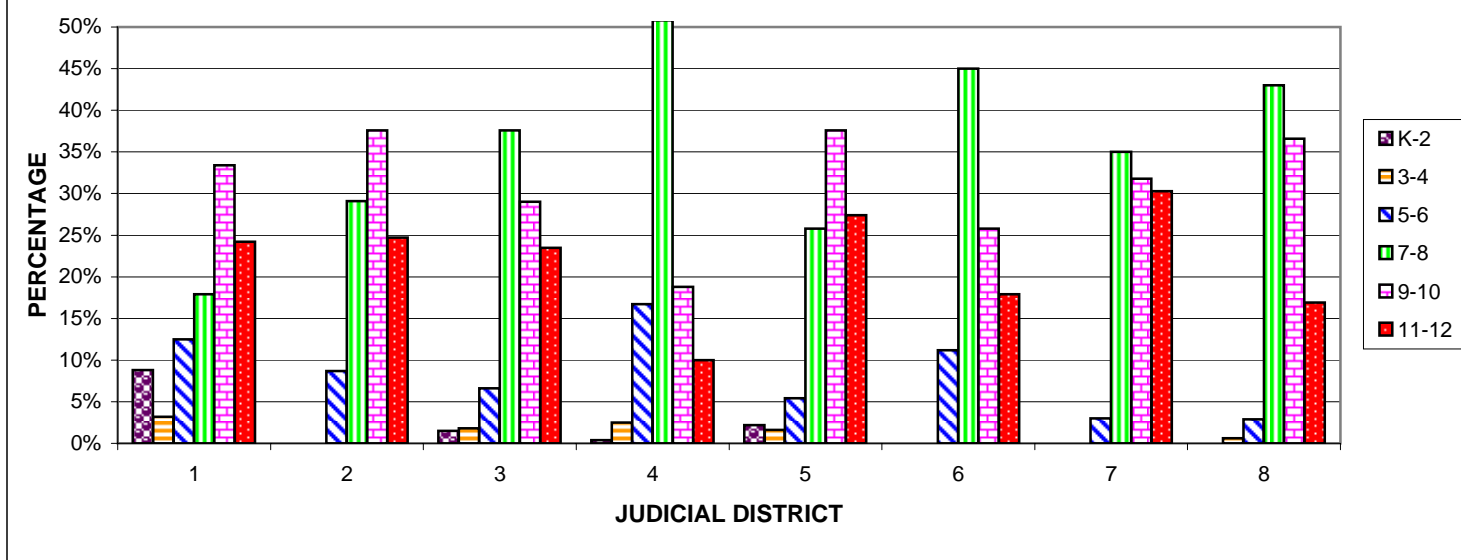


AGE	N	1-6	7-8	9-10	11-12	13-14	15-16
Statewide %	4,527	1.1%	1.8%	1.6%	12.1%	30.2%	33.6%
		17+					
		19.6%					

NOTE: Due to rounding, percentages may not add up to 100%.

Complete data tables available upon request.

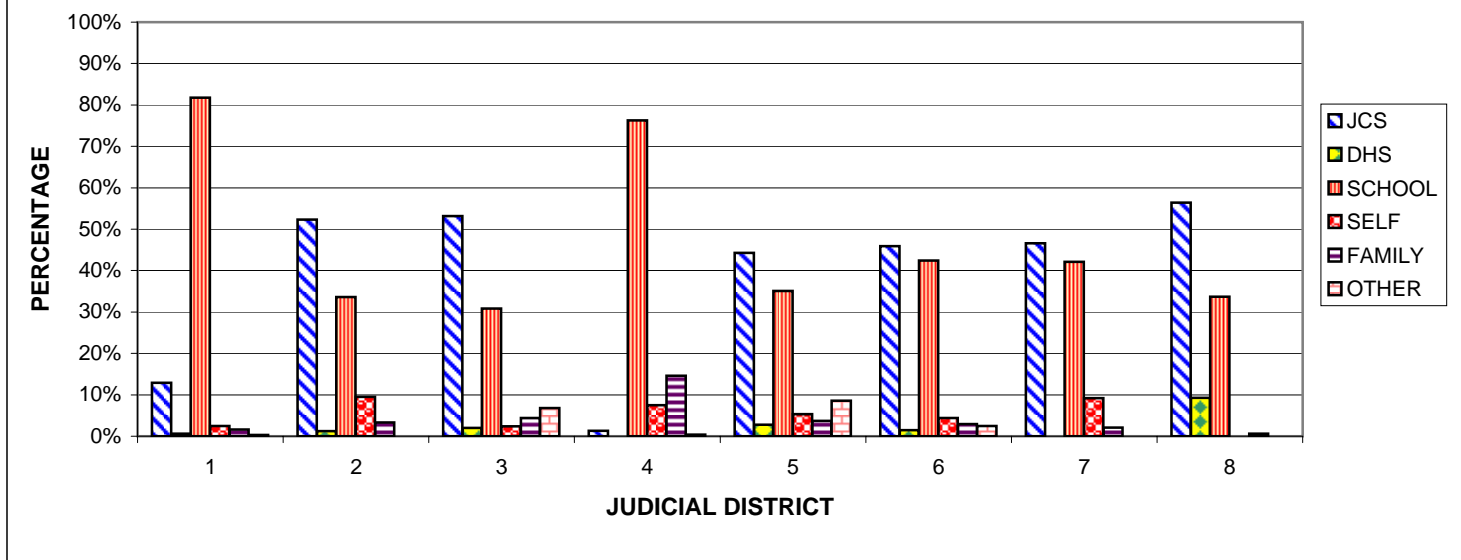
GRADE BY JUDICIAL DISTRICT



GRADE	N	K-2	3-4	5-6	7-8	9-10	11-12
Statewide %	4,527	2.2%	1.3%	8.5%	31.7%	32.8%	23.5%

NOTE: Due to rounding, percentages may not add up to 100%.

REFERRAL SOURCE BY JUDICIAL DISTRICT



REFERRAL SOURCE	N	JCS	DHS	SCHOOL	SELF	FAMILY	OTHER
Statewide %	4,527	39.7%	1.8%	46.1%	5.3%	3.6%	3.3%

NOTE: Due to rounding, percentages may not add up to 100%.

Complete data tables available upon request.

SCHOOL LIAISON PROGRAM STATEWIDE DATA
Pre and Post Performance Measures
JCSL Conference
 September 25-26, 2006

Type of Change	Attendance					Truancy					Tardiness				
	%					%					%				
	01-02	02-03	03-04	04-05	05-06	01-02	02-03	03-04	04-05	05-06	01-02	02-03	03-04	04-05	05-06
Worsened	40.1	35.4	38.3	42.9	48.5	15.1	13.1	16.0	18.1	23.5	27.7	26.9	30.3	34.4	36.4
Stayed the Same	13.1	24.4	15.5	12.7	13.5	65.7	71.3	66.1	63.2	59.2	35.7	40.5	31.7	31.7	32.0
Improved	46.7	40.2	46.2	44.4	38.0	19.2	15.6	17.8	18.7	17.3	36.6	32.3	38.0	34.0	31.6
N	4,672	5,003	4,628	4,515	4,527	4,617	5,128	4,628	4,515	4,527	4,612	5,209	4,628	4,515	4,527

Type of Change	Suspensions					Law Violations					GPA				
	%					%					%				
	01-02	02-03	03-04	04-05	05-06	01-02	02-03	03-04	04-05	05-06	01-02	02-03 ¹	03-04	04-05 ²	05-06 ³
Worsened	15.1	13.7	18.0	15.8	18.2	7.6	8.3	9.7	9.4	7.9	53.1	-	48.2	40.9	40.6
Stayed the Same	63.7	67.1	60.4	65.3	65.0	67.3	67.2	63.4	63.8	69.5	9.8	-	17.0	8.0	9.1
Improved	21.2	19.1	21.6	18.9	16.8	25.2	24.6	26.9	26.9	22.6	37.1	-	34.8	51.0	50.3
N	4,613	5,203	4,628	4,515	4,527	4,661	5,231	4,628	4,515	4,527	3,844	2,984	4,627	3,309	3,637

¹ Over 57% of the GPA data were missing for the 2002-2003 school year.

² Approximately 27% of the GPA data were missing for the 2004-2005 school year.

³ Approximately 20% of the GPA data were missing for the 2005-2006 school year.

NOTE: Due to rounding, percentages may not add up to 100%.

JUVENILE COURT SCHOOL LIAISON STATISTICAL DATA - TABLES
 2005-2006 Academic Year

GENDER BY JUDICIAL DISTRICT

JUDICAL DISTRICT	MAIN OFFICE	N	MALE	FEMALE
1	Waterloo	770	55.6%	44.4%
2	Mason City	726	68.0%	32.0%
3	Sioux City	455	60.0%	40.0%
4	Council Bluffs	240	54.2%	45.8%
5	Des Moines	1141	66.7%	33.3%
6	Cedar Rapids	686	65.3%	34.7%
7	Davenport	337	65.6%	34.4%
8	Burlington	172	64.5%	35.5%
Statewide Totals		4,527	2,866	1,661

NOTE: Due to rounding, percentages may not add up to 100%.

RACE BY JUDICIAL DISTRICT

JUDICAL DISTRICT	MAIN OFFICE	N	CAUCASIAN	AFRICAN-AMERICAN	HISPANIC	NATIVE AMERICAN	ASIAN/PACIFIC ISLANDER	MIXED/OTHER
1	Waterloo	770	85.3%	9.9%	1.6%	0.4%	0.4%	2.5%
2	Mason City	726	84.2%	6.9%	6.7%	0.0%	0.4%	1.8%
3	Sioux City	455	73.2%	7.3%	9.7%	2.4%	1.8%	5.7%
4	Council Bluffs	240	94.2%	0.4%	2.5%	0.4%	0.4%	0.4%
5	Des Moines	1141	81.7%	8.5%	5.1%	0.5%	1.7%	2.5%
6	Cedar Rapids	686	60.1%	29.4%	3.2%	0.1%	0.9%	6.3%
7	Davenport	337	72.4%	15.4%	7.7%	0.6%	0.0%	3.9%
8	Burlington	172	84.3%	8.7%	4.7%	0.0%	1.2%	1.2%
Statewide Totals		4,527	3,560	526	225	24	42	146

NOTE: Due to rounding, percentages may not add up to 100%.

AGE BY JUDICIAL DISTRICT

JUDICAL DISTRICT	MAIN OFFICE	N	Up to 6	7-8	9-10	11-12	13-14	15-16	17+
1	Waterloo	770	3.0%	7.3%	3.4%	12.2%	19.7%	32.5%	21.9%
2	Mason City	726	0.0%	0.0%	0.3%	12.1%	27.3%	38.3%	22.0%
3	Sioux City	455	0.4%	1.3%	2.0%	11.2%	34.9%	30.1%	20.0%
4	Council Bluffs	240	5.4%	0.4%	3.3%	28.8%	37.1%	17.9%	7.1%
5	Des Moines	1141	0.9%	1.5%	2.5%	8.2%	27.6%	37.9%	21.5%
6	Cedar Rapids	686	0.0%	0.0%	0.1%	16.8%	39.8%	29.0%	14.3%
7	Davenport	337	0.0%	0.0%	0.0%	6.2%	32.9%	34.4%	26.4%
8	Burlington	172	0.0%	0.6%	0.0%	10.5%	40.1%	37.2%	11.6%
Statewide Totals		4,527	48	81	74	550	1,366	1,519	889

NOTE: Due to rounding, percentages may not add up to 100%.

GRADE BY JUDICIAL DISTRICT

JUDICAL DISTRICT	MAIN OFFICE	N	K-2	3-4	5-6	7-8	9-10	11-12
1	Waterloo	770	8.8%	3.2%	12.5%	17.9%	33.4%	24.2%
2	Mason City	726	0.0%	0.0%	8.7%	29.1%	37.6%	24.7%
3	Sioux City	455	1.5%	1.8%	6.6%	37.6%	29.0%	23.5%
4	Council Bluffs	240	0.4%	2.5%	16.7%	50.8%	18.8%	10.0%
5	Des Moines	1141	2.2%	1.6%	5.4%	25.8%	37.6%	27.4%
6	Cedar Rapids	686	0.0%	0.0%	11.2%	45.0%	25.8%	17.9%
7	Davenport	337	0.0%	0.0%	3.0%	35.0%	31.8%	30.3%
8	Burlington	172	0.0%	0.6%	2.9%	43.0%	36.6%	16.9%
Statewide Totals		4,527	101	58	383	1,437	1,483	1,063

NOTE: Due to rounding, percentages may not add up to 100%.

REFERRAL SOURCE BY JUDICIAL DISTRICT

JUDICAL DISTRICT	MAIN OFFICE	N	JCS	DHS	SCHOOL	SELF	FAMILY	OTHER
1	Waterloo	770	12.9%	0.6%	81.8%	2.5%	1.6%	0.3%
2	Mason City	726	52.3%	1.2%	33.6%	9.5%	3.3%	0.0%
3	Sioux City	455	53.2%	2.0%	30.8%	2.4%	4.4%	6.8%
4	Council Bluffs	240	1.3%	0.0%	76.3%	7.5%	14.6%	0.4%
5	Des Moines	1141	44.3%	2.8%	35.1%	5.3%	3.7%	8.6%
6	Cedar Rapids	686	45.9%	1.5%	42.4%	4.4%	2.9%	2.5%
7	Davenport	337	46.6%	0.0%	42.1%	9.2%	2.1%	0.0%
8	Burlington	172	56.4%	9.3%	33.7%	0.0%	0.6%	0.0%
Statewide Totals		4,527	1,798	81	2,088	239	161	149

NOTE: Due to rounding, percentages may not add up to 100%.