



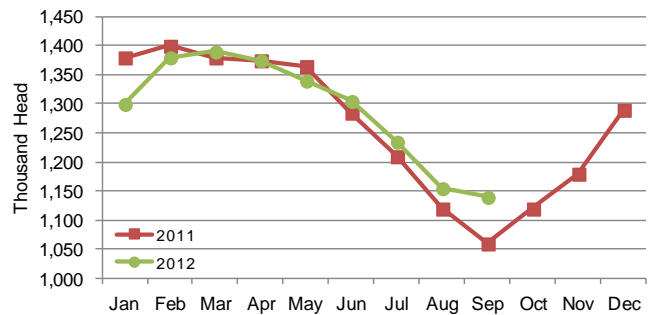
## CATTLE ON FEED

Cattle and calves on feed for slaughter market in Iowa for all feedlots totaled 1,140,000 on September 1, 2012 according to the USDA, National Agricultural Statistics Service, Iowa Field Office. The inventory is down 1 percent from August 1, 2012, but up 8 percent from September 1, 2011. Feedlots with a capacity greater than 1,000 head had 590,000 head on feed, down 2 percent from last month, but up 11 percent from last year. Feedlots with a capacity less than 1,000 head had 550,000 head on feed, down 1 percent from last month, but up 4 percent from last year.

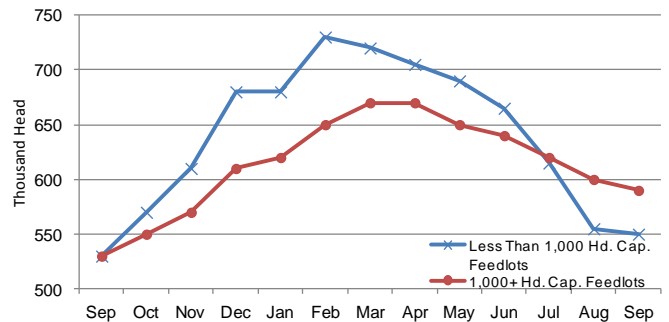
Placements during August totaled 159,000 head, an increase of 67 percent from last month and up 13 percent from last year. Feedlots with a capacity greater than 1,000 head placed 76,000 head, up 46 percent from last month, but down 1 percent from last year. Feedlots with a capacity less than 1,000 head placed 83,000 head. This is up 93 percent from last month and up 30 percent from last year.

Marketings for August were 169,000 head, down 1 percent from last month and down 13 percent from last year. Feedlots with a capacity greater than 1,000 head marketed 84,000 head, up 20 percent from last month, but down 12 percent from last year. Feedlots with a capacity less than 1,000 head marketed 85,000 head, down 15 percent from last month and last year. Other disappearance totaled 5,000 head.

**Cattle on Feed, Inventory on all Feedlots, Iowa: 2011-2012**



**Cattle on Feed, Inventory by Feedlot Capacity, Iowa: Past 12 Months**



### All Cattle on Feed, Iowa

Item	Lots 1,000+ Head (1,000 Head)	Lots Less than 1,000 Head (1,000 Head)	All Lots (1,000 Head)
Cattle on Feed, August 1, 2012 .....	600	555	1,155
August Placements .....	76	83	159
August Marketings .....	84	85	169
August Other Disappearance .....	2	3	5
Cattle on Feed, September 1, 2012 .....	590	550	1,140

### Cattle on Feed: Number on Feed, Placements, Marketings, and Other Disappearance by Month, 1,000+ Capacity Feedlots

[Cattle and calves on feed are animals for slaughter market being fed a ration of grain or other concentrates and are expected to produce a carcass that will grade select or better.]

State	Cattle on Feed September 1			Placements during August			Marketings during August			August Disappearance other than Slaughter <sup>1</sup>		
	2011 (1,000 Head)	2012 (1,000 Head)	'12 as % of '11 (Percent)	2011 (1,000 Head)	2012 (1,000 Head)	'12 as % of '11 (Percent)	2011 (1,000 Head)	2012 (1,000 Head)	'12 as % of '11 (Percent)	2011 (1,000 Head)	2012 (1,000 Head)	'12 as % of '11 (Percent)
Arizona .....	283	271	96	19	18	95	22	20	91	1	1	100
California .....	475	480	101	56	63	113	56	55	98	5	3	60
Colorado .....	990	930	94	230	190	83	205	195	95	5	5	100
Idaho .....	195	205	105	43	53	123	42	37	88	1	1	100
<b>Iowa .....</b>	<b>530</b>	<b>590</b>	<b>111</b>	<b>77</b>	<b>76</b>	<b>99</b>	<b>95</b>	<b>84</b>	<b>88</b>	<b>2</b>	<b>2</b>	<b>100</b>
Kansas .....	2,210	2,170	98	520	430	83	475	410	86	15	10	67
Nebraska .....	2,010	2,240	111	445	470	106	400	445	111	15	15	100
Oklahoma .....	365	325	89	75	67	89	67	60	90	3	2	67
South Dakota ...	190	185	97	45	34	76	48	38	79	2	1	50
Texas .....	2,890	2,620	91	620	495	80	540	510	94	20	15	75
Washington .....	193	208	108	48	47	98	44	48	109	1	1	100
Other States ....	369	413	112	68	59	87	59	58	98	2	5	250
United States ...	10,700	10,637	99	2,246	2,002	89	2,053	1,960	95	72	61	85

<sup>1</sup> Includes death loss, movement from feedlots to pasture, and shipments to other feedlots for further feeding.

## United States Cattle on Feed

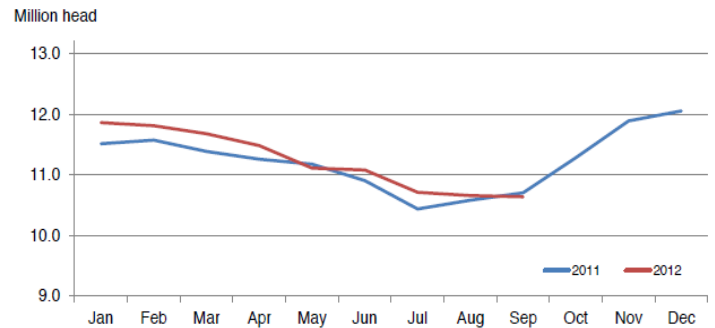
Cattle and calves on feed for slaughter market in the United States for feedlots with capacity of 1,000 or more head totaled 10.6 million head on September 1, 2012. The inventory was 1 percent below September 1, 2011.

Placements in feedlots during August totaled 2.00 million, 11 percent below 2011. This is the second lowest cattle placements for the month of August since the series began in 1996. Net placements were 1.94 million head. During August, placements of cattle and calves weighing less than 600 pounds were 482,000, 600-699 pounds were 385,000, 700-799 pounds were 475,000, and 800 pounds and greater were 660,000.

Marketings of fed cattle during August totaled 1.96 million, 5 percent below 2011.

Other disappearance totaled 61,000 during August, 15 percent below 2011.

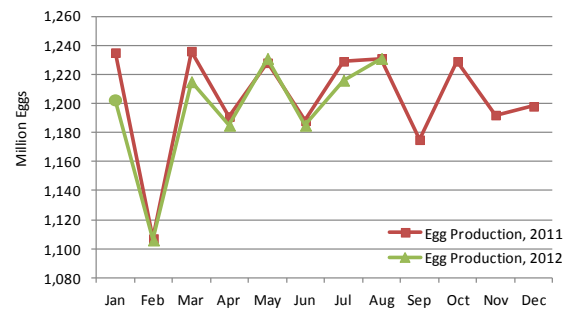
**Cattle on Feed Inventory on 1,000+ Capacity Feedlots – United States**



## CHICKENS & EGGS

**Egg production** in Iowa for August 2012 was 1.23 billion eggs, up fractionally from last month, but unchanged from last year, according to the latest *Chickens and Eggs* release from USDA's National Agricultural Statistics Service. The total number of layers on hand during August was 51.9 million, up fractionally from last month (51.8 million), but down 2 percent from the 52.9 million in August 2011. Eggs per 100 layers for the month of August were 2,371, up 1 percent from last month and up 2 percent from the 2,328 last year.

**Egg Production, Iowa, 2011-2012**



### All Layers and Egg Production: Selected States, August 2011 and 2012

[Data may not add to totals due to rounding. Data by type of flock not shown for some states to avoid disclosing individual operations, data included in United States totals.]

State	Table egg layers in flocks 30,000 & above		All layers on hand		Eggs per 100 layers		Total egg production		Table egg production	
	2011	2012	2011	2012	2011	2012	2011	2012	2011	2012
	(Thousands)	(Thousands)	(Thousands)	(Thousands)	(Number)	(Number)	(Million eggs)	(Million eggs)	(Million eggs)	(Million eggs)
Alabama .....	1,274	1,525	9,002	9,082	1,955	2,048	176	186	29	38
Arkansas .....	3,400	3,620	12,190	12,034	2,084	2,152	254	259	85	92
California .....	18,714	19,345	19,013	19,697	2,377	2,356	452	464	(D)	(D)
Colorado .....	4,055	3,770	4,511	4,221	2,283	2,511	103	106	(D)	(D)
Connecticut .....	2,191	2,238	2,263	2,305	2,475	2,516	56	58	(D)	(D)
Florida .....	9,085	8,188	9,473	8,507	2,354	2,363	223	201	217	196
Georgia .....	7,383	8,456	16,141	16,767	2,150	2,153	347	361	178	199
Illinois .....	4,098	3,936	4,310	4,197	2,390	2,383	103	100	100	96
Indiana .....	22,229	23,681	22,931	24,358	2,351	2,307	539	562	527	550
<b>Iowa .....</b>	<b>51,932</b>	<b>50,976</b>	<b>52,871</b>	<b>51,927</b>	<b>2,328</b>	<b>2,371</b>	<b>1,231</b>	<b>1,231</b>	<b>1,217</b>	<b>1,215</b>
Maine .....	3,506	3,475	3,561	3,530	2,303	2,295	82	81	(D)	(D)
Maryland .....	1,760	2,254	1,885	2,363	2,175	2,412	41	57	40	56
Michigan .....	9,839	11,814	9,991	11,964	2,452	2,424	245	290	(D)	(D)
Minnesota .....	9,584	9,741	10,081	10,163	2,331	2,411	235	245	226	238
Mississippi .....	1,359	1,461	5,783	5,545	2,092	2,128	121	118	35	37
Missouri .....	5,931	5,325	7,354	6,768	2,352	2,408	173	163	(D)	(D)
Nebraska .....	8,923	8,966	8,973	9,016	2,530	2,507	227	226	227	226
New York .....	4,130	4,168	4,365	4,400	2,474	2,523	108	111	(D)	(D)
North Carolina .....	5,458	5,734	12,491	12,595	2,090	2,048	261	258	130	135
Ohio .....	27,204	26,316	27,705	26,842	2,292	2,321	635	623	(D)	(D)
Oregon .....	2,235	2,146	2,380	2,304	2,437	2,648	58	61	56	58
Pennsylvania .....	24,090	22,700	25,250	23,778	2,436	2,481	615	590	595	572
South Carolina .....	3,183	2,984	4,420	4,206	2,308	2,330	102	98	80	76
South Dakota .....	2,341	2,207	2,381	2,247	2,604	2,537	62	57	62	57
Texas .....	14,036	14,934	18,101	18,685	2,282	2,301	413	430	(D)	(D)
Utah .....	3,527	3,614	3,557	3,644	2,390	2,415	85	88	85	88
Virginia .....	1,215	1,123	2,897	2,853	2,106	2,103	61	60	29	28
Washington .....	6,688	6,611	6,803	6,726	2,396	2,334	163	157	(D)	(D)
Wisconsin .....	3,986	4,341	4,559	4,946	2,369	2,406	108	119	(D)	(D)
Other States .....	11,818	12,221	20,170	19,827	2,181	2,204	440	437	306	317
United States .....	275,174	277,870	335,412	335,497	2,301	2,324	7,719	7,797	6,644	6,758