

A d d e n d u m

Iowa Department of Transportation
Office of Contracts

Date of Letting: September 18, 2012
Date of Addendum: September 12, 2012

B.O.	Proposal ID	Proposal Work Type	County	Project Number	Addendum
164	84-0181-079	HMA Paved Shoulder - New	Sioux	HSIPX-018-1(79)--3L-84	18sep164.a01

Notice: Only the bid proposal holders receive this addendum and responsibility for notifying any potential subcontractors or suppliers remains with the proposal holder.

Attached is a SCHEDULE OF PRICES for the following item:

Line No. 0231 2599-9999009 RETROFIT THRIE-BEAM BRIDGE RAIL

Bid this item as instructed and submit the bid for this item with the Bid Proposal.

Make the following changes to the PROPOSAL SCHEDULE OF PRICES:

Change Line No. 0120 2505-4008300 STEEL BEAM GUARDRAIL, from 430.400 LF to 300.000 LF.

If the quantity is not changed on the proposal form, the bid amount will be extended using the unit price times the correct quantity as shown here.

Make the following change to the Plan Sheets:

On Sheet C.4 Table 108-8A Steel Beam Guardrail column lines NO. 1, 4, 5, and 8 should have the quantity of 12.5

On Sheet C.4 Table 108-8A Steel Beam Guardrail column lines NO. 2, 3, 6, and 7 should have the quantity of 37.5.

Add the attached plan sheet U.1

PROPOSAL ADDENDUM - SCHEDULE OF PRICES

Proposal ID No.: 84-0181-079
 Primary Work Type: HMA PAVED SHOULDER - NEW
 Primary County: SIOUX

Bid Order No.: 164
 Letting Date: SEPTEMBER 18, 2012
 10:00 A.M.

ITEMS LISTED ON THIS PAGE ARE ADDED BY ADDENDUM 18sep164.a01

UNIT BIDS MUST BE TYPED OR SHOWN IN INK OR THE BID WILL BE REJECTED.

Line No	Item Number Item Description	Item Quantity and Unit	Unit Price		Bid Amount	
			Dollars	Cts	Dollars	Cts
Section 0001 (continued)						
ROADWAY ITEMS						
0231	2599-9999009 RETROFIT THRIE-BEAM BRIDGE RAIL	165.000 LF	.		.	
Total Bid					.	

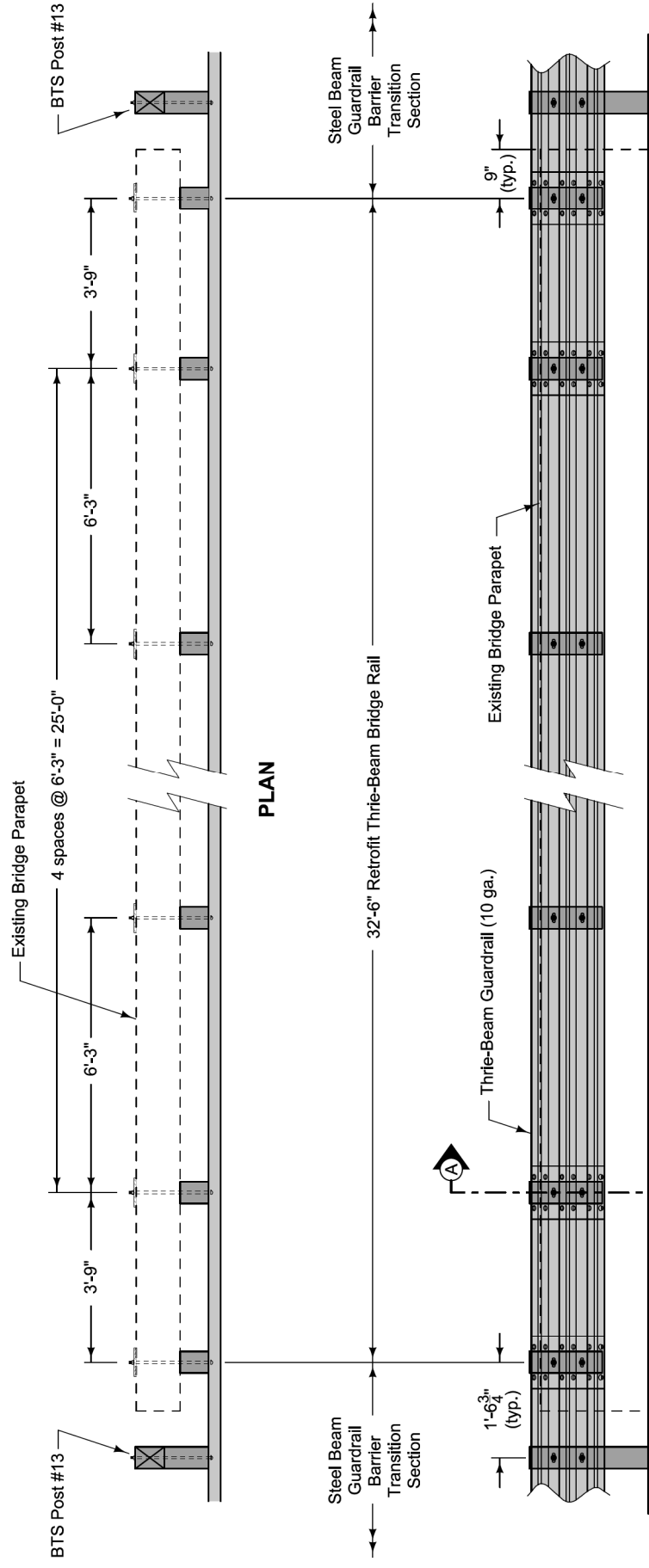
Drill holes in existing bridge parapet with a core bit.
Lap guardrail splices in the direction of adjacent traffic.
Use materials meeting the requirements of Section 4155.

Contract Item: Retrofit Thrie-Beam Bridge Rail

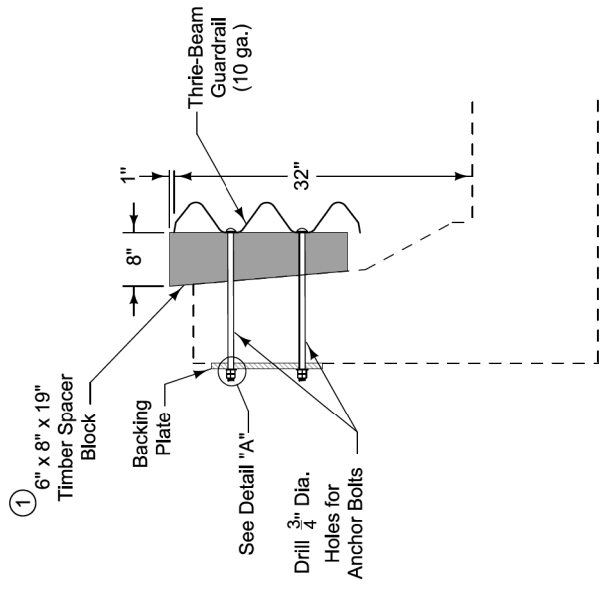
Item includes:
Thrie-Beam Guardrail (10 ga.)
6" x 8" x 19" Timber Spacer Blocks
Backing Plates
5/8" x sufficient length Anchor Bolts
5/8" Washers and Nuts

Measurement for Retrofit Thrie-Beam Bridge Rail will be linear feet shown in the contract documents. Payment will be the contract unit price per linear foot for furnishing all materials, equipment, and labor necessary to construct the retrofit rail as shown.

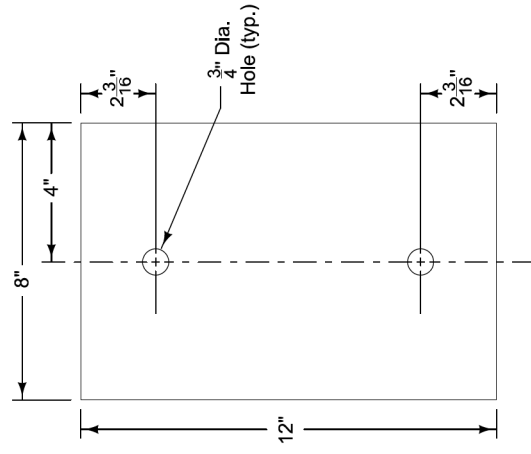
- ① Treated timber blocks meeting the requirements of Section 4164. Ensure guardrail is plumb by trimming back side of blocks to match slope of bridge parapet. Install blocks so that wood grain is vertical.



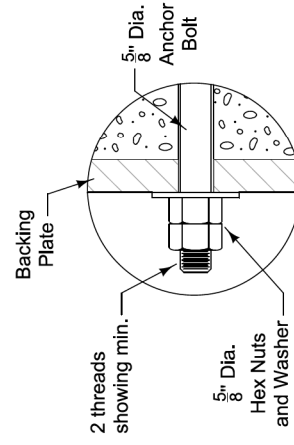
ELEVATION



SECTION A-A



BACKING PLATE
5/8" A36 Steel Plate



DETAIL "A"

RETROFIT THRIE-BEAM
BRIDGE RAIL