



CATTLE ON FEED

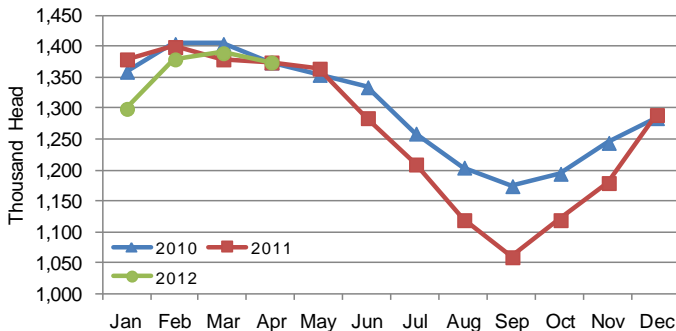
Cattle and calves on feed for slaughter in Iowa for all feedlots totaled 1,375,000 on April 1, 2012 according to the USDA, National Agricultural Statistics Service, Iowa Field Office. The inventory is down 1 percent from March 1, 2012 but unchanged from April 1, 2011. Feedlots with a capacity greater than 1,000 head had 670,000 head on feed, unchanged from last month but up 3 percent from last year. Feedlots with a capacity less than 1,000 head had 705,000 head on feed, down 2 percent from last month and down 3 percent from last year.

Placements during March totaled 133,000 head, a decrease of 1 percent from last month and down 17 percent from last year. Feedlots with a capacity greater than

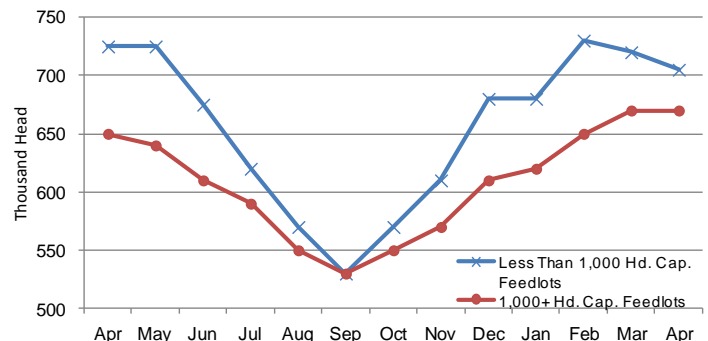
1,000 head placed 73,000 head, down 14 percent from last month and down 10 percent from last year. Feedlots with a capacity less than 1,000 head placed 60,000 head. This is up 20 percent from last month but down 25 percent from last year.

Marketings for March were 144,000 head, up 21 percent from last month but down 9 percent from last year. Feedlots with a capacity greater than 1,000 head marketed 71,000 head, up 15 percent from last month but down 9 percent from last year. Feedlots with a capacity less than 1,000 head marketed 73,000 head, up 28 percent from last month but down 9 percent from last year. Other disappearance totaled 4,000 head.

Cattle on Feed, Inventory on all Feedlots, Iowa: 2010-2012



Cattle on Feed, Inventory by Feedlot Capacity, Iowa: Past 12 Months



All Cattle on Feed, Iowa

Item	Lots 1,000+ Head (1,000 Head)	Lots Less than 1,000 Head (1,000 Head)	All Lots (1,000 Head)
Cattle on Feed, March 1, 2012	670	720	1,390
March Placements	73	60	133
March Marketings	71	73	144
March Other Disappearance	2	2	4
Cattle on Feed, April 1, 2012	670	705	1,375

Cattle on Feed: Number on Feed, Placements, Marketings, and Other Disappearance by Month, 1,000+ Capacity Feedlots

[Cattle and calves on feed are animals for slaughter market being fed a ration of grain or other concentrates and are expected to produce a carcass that will grade select or better.]

State	Cattle on Feed April 1			Placements during March			Marketings during March			March Disappearance other than Slaughter ¹		
	2011	2012	'12 as % of '11	2011	2012	'12 as % of '11	2011	2012	'12 as % of '11	2011	2012	'12 as % of '11
	(1,000 Head)	(1,000 Head)	(Percent)	(1,000 Head)	(1,000 Head)	(Percent)	(1,000 Head)	(1,000 Head)	(Percent)	(1,000 Head)	(1,000 Head)	(Percent)
Arizona	276	278	101	33	27	82	25	27	108	1	1	100
California	450	490	109	48	53	110	55	61	111	3	2	67
Colorado	1,090	1,070	98	215	160	74	190	175	92	5	5	100
Idaho	220	225	102	35	34	97	34	38	112	1	1	100
Iowa	650	670	103	81	73	90	78	71	91	3	2	67
Kansas	2,190	2,170	99	415	375	90	435	395	91	10	10	100
Nebraska	2,380	2,530	106	390	440	113	430	460	107	10	20	200
Oklahoma	355	320	90	75	56	75	78	74	95	2	2	100
South Dakota ..	265	255	96	46	45	98	44	48	109	2	2	100
Texas	2,770	2,780	100	490	430	88	540	470	87	10	20	200
Washington ...	207	233	113	33	37	112	28	36	129	3	1	33
Other States ..	404	461	114	53	62	117	53	63	119	3	3	100
United States .	11,257	11,482	102	1,914	1,792	94	1,990	1,918	96	53	69	130

¹Includes death loss, movement from feedlots to pasture, and shipments to other feedlots for further feeding.

Cattle on Feed: Number on Feed by Class, 1,000+ Capacity Feedlots by Quarter, State, and United States, 2011-2012

State	Steers & Steer Calves			Heifers & Heifer Calves			Cows & Bulls		
	April 1, 2011	January 1, 2012	April 1, 2012	April 1, 2011	January 1, 2012	April 1, 2012	April 1, 2011	January 1, 2012	April 1, 2012
	(1,000 Head)	(1,000 Head)	(1,000 Head)	(1,000 Head)	(1,000 Head)	(1,000 Head)	(1,000 Head)	(1,000 Head)	(1,000 Head)
Arizona	268	276	274	8	3	4	0	0	0
California	390	440	425	59	69	65	1	1	0
Colorado	740	745	730	345	400	335	5	5	5
Idaho	120	123	131	94	106	92	6	1	2
Iowa	460	450	480	190	170	189	0	0	1
Kansas	1,220	1,160	1,180	965	1,085	985	5	5	5
Nebraska	1,480	1,530	1,530	890	980	980	10	40	20
Oklahoma	210	215	200	145	160	120	0	0	0
South Dakota ..	135	131	138	114	101	100	16	28	17
Texas	1,680	1,730	1,610	1,090	1,209	1,169	0	1	1
Washington ...	135	150	143	68	80	88	4	2	2
Other States ..	281	331	333	122	133	127	1	1	1
United States .	7,119	7,281	7,174	4,090	4,496	4,254	48	84	54

Your Participation is Important!

With the 2012 planting season underway, USDA's National Agricultural Statistics Service (NASS) is conducting the **June Agricultural Survey**. This survey is vital to help provide the first clear indication of the potential production and supply of major commodities in the United States for the 2012 crop year. The data level the playing field for producers, giving them the same access to information as elevators, input suppliers, bankers and others with whom they do business.

Your participation is key, as the accuracy of our reports relies on the information you provide. Please help us serve you and your fellow producers by taking part in the June Agricultural Survey to ensure the agriculture industry has reliable data with which to make sound business decisions.

Commercial Red Meat Production, by State and U.S.

[Includes total beef, veal, pork, and lamb and mutton.
Data may not add to totals due to rounding]

State	2010	2011
----- million pounds -----		
Alabama.....	21.7	20.1
Alaska.....	0.6	0.6
Arizona.....	391.2	413.7
Arkansas.....	51.7	42.7
California.....	1,723.9	1,733.5
Colorado.....	2,130.9	2,150.1
Delaware-Maryland.....	38.0	35.9
Florida.....	113.9	118.1
Georgia.....	125.4	135.0
Hawaii.....	10.7	10.6
Idaho.....	204.1	93.2
Illinois.....	2,715.5	2,757.1
Indiana.....	1,742.4	1,753.4
Iowa.....	6,570.2	6,591.8
Kansas.....	5,380.0	5,341.1
Kentucky.....	560.7	553.6
Louisiana.....	5.9	6.0
Michigan.....	524.7	508.8
Minnesota.....	2,710.6	2,755.1
Mississippi.....	23.6	25.8
Missouri.....	1,697.9	1,755.5
Montana.....	17.5	16.1
Nebraska.....	7,135.7	7,163.9
Nevada.....	0.8	1.1
New Hampshire.....	16.3	17.4
New Jersey.....	54.3	54.8
New Mexico.....	4.8	4.6
New York.....	33.1	33.0
North Carolina.....	2,441.4	2,384.3
North Dakota.....	38.8	37.4
Ohio.....	302.6	297.0
Oklahoma.....	1,150.6	1,195.7
Oregon.....	58.7	68.8
Pennsylvania.....	1,284.0	1,271.7
South Carolina.....	243.1	245.1
South Dakota.....	990.2	1,043.5
Tennessee.....	235.2	233.1
Texas.....	5,060.1	5,143.2
Utah.....	455.0	453.7
Virginia.....	485.6	487.4
Washington.....	865.6	865.9
West Virginia.....	8.0	8.6
Wisconsin.....	1,408.1	1,397.8
Wyoming.....	6.1	6.3
United States.....	49,039.3	49,231.7

Commercial Livestock Slaughter, Iowa, 2010 - 2011

	Hogs	
	2010	2011
Number of Head	29,837.5	29,743.8
Total Live Weight (1,000 lbs)	8,144,471	8,177,329
Average Live Weight (lbs)	273	275
	Sheep	
	2010	2011
Number of Head	274.2	50.9
Total Live Weight(1,000 lbs)	40,494	7,625
Average Live Weight (lbs)	148	150

Federally Inspected Plants and Head Slaughtered, Iowa, 2010 - 2011

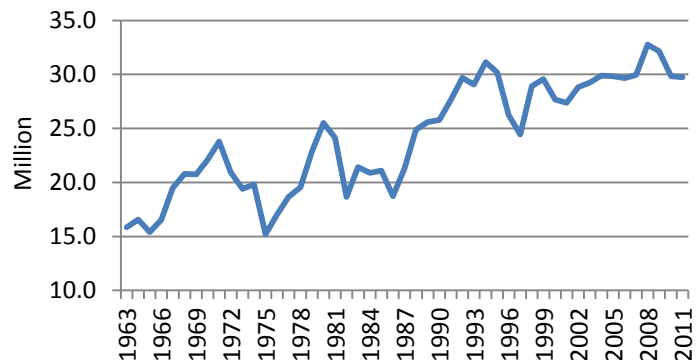
	Plants		Head	
	2010	2011	2010	2011
Cattle	(D)	(D)	(D)	(D)
Calves	(D)	1	(D)	3
Hogs	20	19	29,817,971	29,721,378
Sheep & Lambs	3	3	272,319	49,076
Goats	3	3	2,179	606
Bison	1	1	121	108

(D) Withheld to avoid disclosing data for individual operations.

Livestock Slaughter Plants, Number by Type of Inspection, Iowa, January 1, 2011 - 2012

	2011	2012
Under Federal Inspection	24	24
Other	119	122
Total	143	146

Commercial Hog Slaughter, Iowa, 1963 - 2011



Milk Cows and Production: By Selected States, March 2011 and 2012

State	Milk Cows ¹		Milk Per Cow ²		Milk Production ²		
	2011	2012	2011	2012	2011	2012	Change from 2011
	1,000 Head	1,000 Head	Pounds	Pounds	Million Pounds	Million Pounds	Percent
Illinois	98	100	1,715	1,770	168	177	5.4
Indiana.....	172	176	1,795	1,845	309	325	5.2
Iowa	209	204	1,825	1,900	381	388	1.8
Kansas	122	123	1,830	1,870	223	230	3.1
Michigan	364	375	1,985	2,070	723	776	7.3
Minnesota	469	465	1,660	1,710	779	795	2.1
Missouri	94	93	1,365	1,395	128	130	1.6
Ohio	269	270	1,660	1,710	447	462	3.4
Wisconsin	1,266	1,269	1,775	1,845	2,247	2,341	4.2
23-State Total ³	8,425	8,519	1,872	1,931	15,773	16,452	4.3

¹ Includes dry cows, excludes heifers not yet fresh. ² Excludes milk sucked by calves. ³ As of February 2009, the 23 States are Arizona, California, Colorado, Florida, Idaho, Illinois, Indiana, Iowa, Kansas, Michigan, Minnesota, Missouri, New Mexico, New York, Ohio, Oregon, Pennsylvania, Texas, Utah, Vermont, Virginia, Washington, and Wisconsin.

All Layers and Egg Production: Selected States, March 2011 and 2012

[Data may not add to totals due to rounding. Data by type of flock not shown for some states to avoid disclosing individual operations, data included in United States totals.]

State	Table egg layers in flocks 30,000 & above		All layers on hand		Eggs per 100 layers		Total egg production		Table egg production	
	2011	2012	2011	2012	2011	2012	2011	2012	2011	2012
	(Thousands)	(Thousands)	(Thousands)	(Thousands)	(Number)	(Number)	(Million eggs)	(Million eggs)	(Million eggs)	(Million eggs)
Indiana	22,854	23,959	23,959	23,599	2,394	2,296	565	567	551	553
Iowa	52,574	50,073	53,428	51,062	2,313	2,379	1,236	1,215	1,222	1,197
Minnesota	9,984	9,260	10,448	9,756	2,297	2,327	240	227	232	218
Nebraska	9,380	9,226	9,430	9,276	2,492	2,469	235	229	235	229
North Carolina	5,839	5,740	13,501	12,855	2,029	2,069	274	266	138	137
Ohio	26,783	27,334	27,316	27,870	2,372	2,318	648	646	(D)	(D)
United States	277,702	280,597	340,655	339,750	2,301	2,313	7,840	7,858	6,735	6,799

(D) Withheld to avoid disclosing data for individual operations.