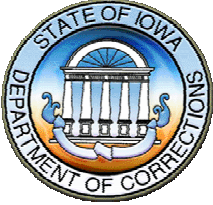
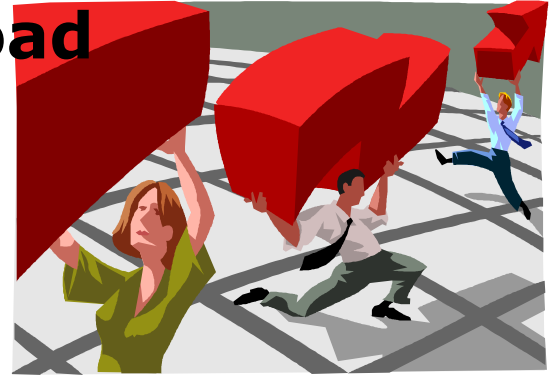


Lettie Prell
Director of Research

Curt Smith
Executive Assistant to the Director



Data Download



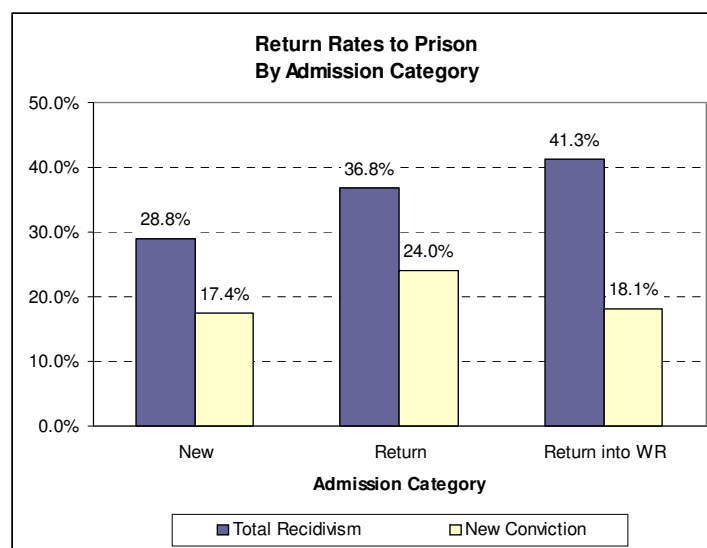
Halfway Back Works

In an effort to reduce the strain on limited prison beds, the Board of Parole – with the support of the Department of Corrections – instituted the Halfway Back revocation option. This option allows for selected parolees to be revoked to work release rather than to prison.

To measure the effectiveness of Halfway Back, DOC tracked all offenders leaving prison during FY 2007 for three years. Of those who returned to prison, we divided them into three categories according to how they *originally* came into the prison system:

- **New** – a new court commitment or probation revocation.
- **Return** – returned from prior parole, OWI, work release, etc.
- **Return to Work Release** – those offenders who, rather than be revoked to prison, were revoked to work release.

The graph below shows the total rate of return to prison and returns just for new conviction for each category:



The difference in overall recidivism rates between "Returns" and "Return into WR" is NOT statistically significant. **However, there IS a statistically significant difference in the rate of new conviction between the two groups, with the "Return into WR" group having a lower rate of new conviction than other returned offenders.**

In other words, Halfway Back works as a safe alternative to revocation to prison.

The number of offenders in the Return to WR group was 281. The next step is to calculate prison bed savings that were avoided by not revoking these offenders all the way back to prison. The savings will be substantial, given the offenders had been serving for crimes ranging all the way up to Class B felonies.