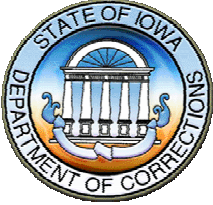
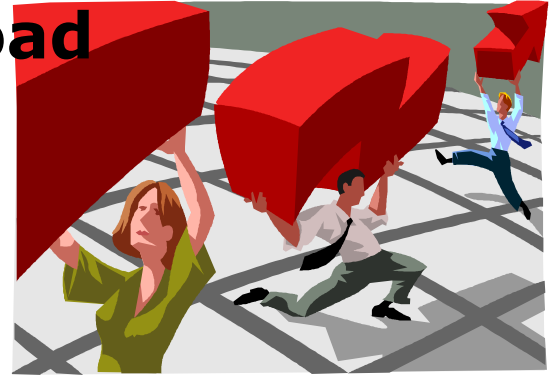


Lettie Prell  
Director of Research

Curt Smith  
Executive Assistant to the Director

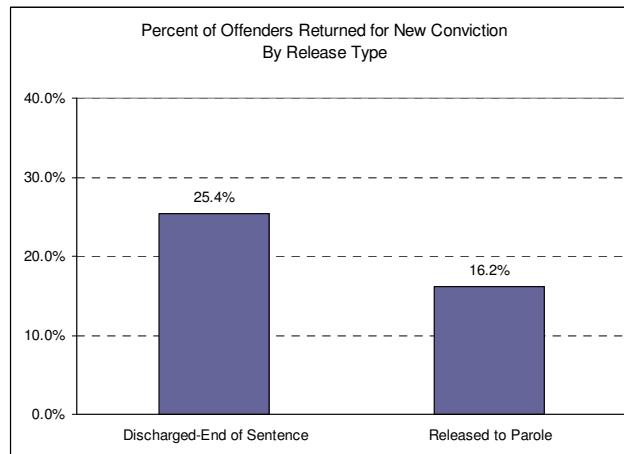


## Data Download



### Parole Reduces Crime and Victims

Iowa offenders paroled from prison are significantly less likely to return to prison for a new conviction than are those offenders who expire their sentence. Put another way, for every 100 offenders who are paroled rather than discharge by way of expiration of sentence, we can prevent 9 new convictions involving prison incarceration.



Actually, parolees have higher overall return rates to prison than offenders who discharge their sentences because the latter group receives no follow-up community supervision, so they can only be returned to prison for new convictions. However, supervised release provides structure, assistance and accountability for offenders transitioning to the community. Additionally, regular monitoring ensures that offenders who begin to destabilize in the community setting can be helped, or placed back in prison before they commit a new offense.

Early paroles have side benefits in that they ease prison overcrowding, and allows those offenders in prison access to a greater amount of fixed reentry services and resources.