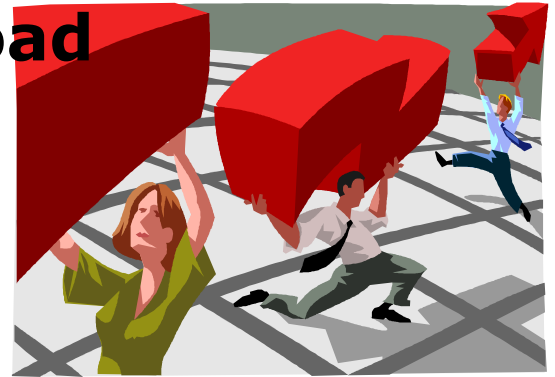


Lettie Prell
Director of Research

Data Download

Curt Smith
Executive Assistant to the Director

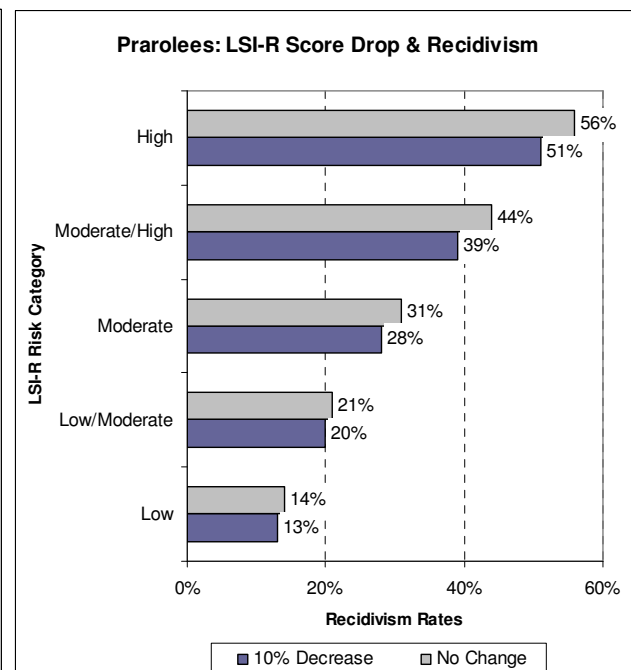
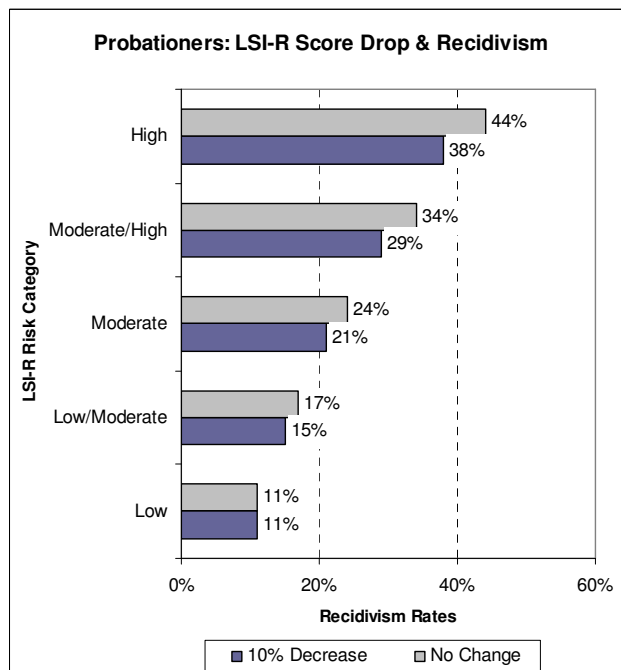


LSI-R Scores: Change Matters

Past studies have shown the LSI-R risk assessment tool to be accurate in assessing the risk level of Iowa offenders. A more recent study, conducted by the University of Cincinnati, showed that a reduction in the LSI-R score over time results in a lower risk that an Iowa offender will reoffend.

The study followed a sample of 2,849 Iowa offenders to whom the LSI-R had been administered at least twice over a five year period ending September 2005. Recidivism was defined as a new conviction for a felony or indictable misdemeanor.

The study found that for the highest risk category, a 10% drop in LSI-R scores leads to a 6% reduction in recidivism. However, a 10% drop in LSI-R scores for the lowest risk offenders resulted in only a 1% reduction in recidivism rates. The following charts show the results for probationers and parolees separately.



What this means

This research tells us our efforts to reduce offender LSI-R scores through correctional interventions do matter. The results are fewer crimes and victims.

How to act on this information

- Focus our limited correctional resources on programming for higher risk offenders, since that is the group that will benefit the most from our interventions. Reducing risk for Low and Low/Moderate offenders achieves little change in their already low recidivism rates.
- Administer the LSI-R multiple times for each offender, as a way to monitor an offender's rehabilitative progress. If no change in score is occurring, the offender may need a different intervention, or some other change in the case plan. On the other hand, if an offender's score has dropped significantly, a lower level of supervision or early discharge might be indicated.
- Continue to implement quality improvement plans to ensure interventions are more evidence-based. While as of 2005 our efforts lowered recidivism rates 6% for our highest risk offenders, improvements in interventions may result in even larger reductions in recidivism rates in the future.

We all would like to know that what we do is having an impact, that it is advancing successful offender reentry. Now we have a benchmark – a 10% drop in total LSI-R score – to work toward for our high risk offenders.

This issue of the ICON Data Download describes findings from *Assessing the Predictive Validity of the Level of Service Inventory-Revised: Recidivism Among Iowa Parolees and Probationers*, by Brenda Vose (University of Cincinnati, May 2008).

The mission of the Iowa Department of Corrections is to:
Advance Successful Offender Reentry to Protect the Public, the Employees, and the Offenders from Victimization.