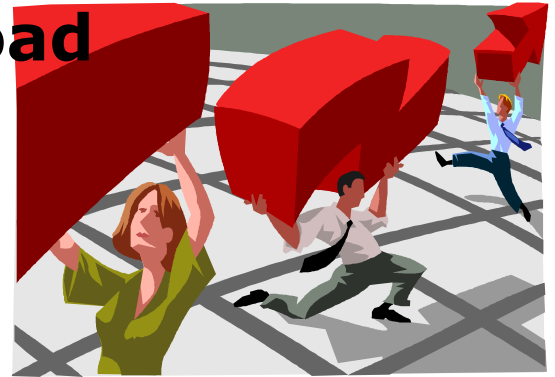


Lettie Prell
Director of Research

Data Download

Curt Smith
Executive Assistant to the Director

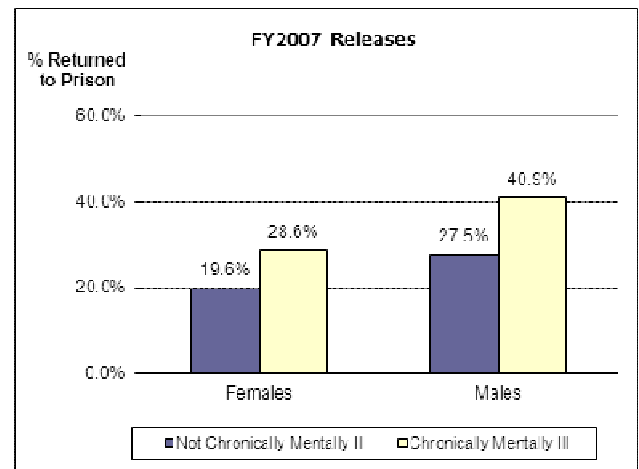
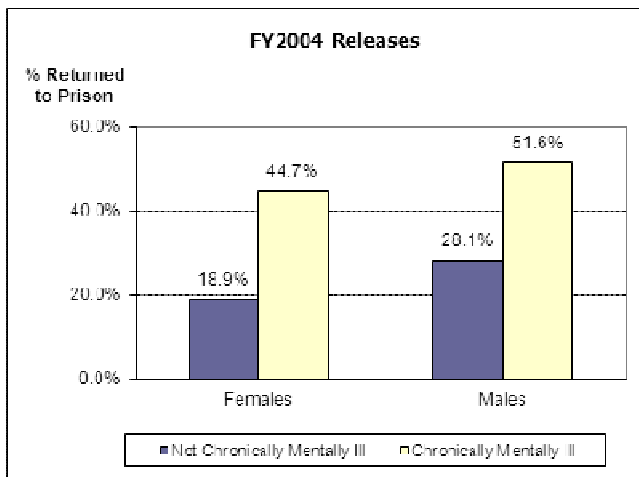


Improved Outcomes for Offenders with Chronic Mental Illness

Last month DOC released a study entitled *Iowa Recidivism Report: Prison Return Rates*. The study documents that Iowa's three-year return rate to prison for offenders released during FY 2007 decreased from 33.9% for the previous three-years period studied to 31.8% (and below our goal of 33.3%). More dramatic is the decrease in the percent of offenders with mental illness returning to prison.

Comparison between the two graphs below reveals return rates to prison for offenders released in FY2007 who had a chronic mental illness were significantly lower than rates for mentally ill offenders released in FY2004. However, return rates to prison for offenders who were not chronically mentally ill were not significantly different. "Chronic" mental illness is defined as conditions that are managed rather than "cured."

These improved outcomes involve a substantial number of offenders; 63% of female offenders and 40% of male offenders released in FY2007 had at least one chronic mental illness.



While much more needs to be done to improve the supervision and treatment of offenders with a mental illness in our institutions, it is heartening to establish that our efforts to date have made a difference.

The full report authored by Lettie Prell is available under www.doc.state.ia.us/research.asp