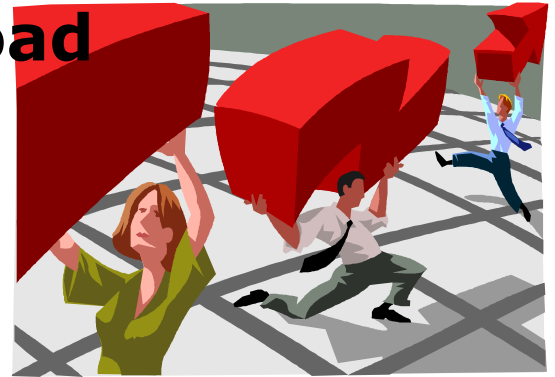


Lettie Prell
Director of Research

Data Download

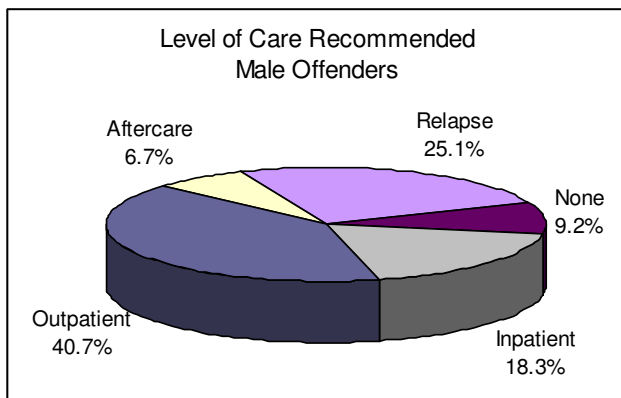
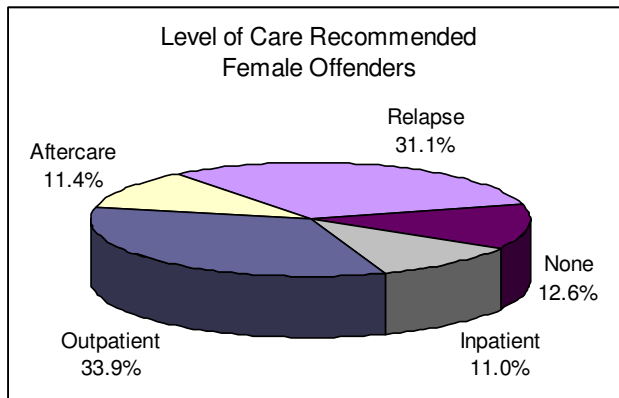
Curt Smith
Executive Assistant to the Director



Offender Assessments Help Guide Use of Treatment Resources

The Department of Corrections contracts with Spectrum Health Systems to conduct front-end substance abuse assessments at the inmate reception center – Iowa Medical and Classification Center. Such assessments are considered vital in so far as 80-85% of offenders in DOC institutions list alcohol/drug problems as one of their top three need areas.

These assessments not only identify whether or not substance abuse treatment is needed, but also the appropriate level of care. Below is a breakdown of the assessed level of care for men and women offenders.



Data based on most recent nine months (when offenders' gender was collected)

For both male and female offenders, the most common level of treatment needed is outpatient treatment. However, the data also show that substance abuse treatment needs differ between male and female offenders. Higher percentages of male offenders were identified as needing inpatient or outpatient treatment, while higher percentages of female offenders were identified as needing aftercare and relapse.

In response to this information, DOC has realigned its inmate interventions to increase outpatient substance abuse treatment, and reduce inpatient treatment slots. Specifically, the inpatient program at the Clarinda Correctional Facility has been discontinued and a new intensive outpatient treatment program called CHOICES has been implemented there. Additional changes could be made as warranted by the data.

The mission of the Iowa Department of Corrections is to:

Advance Successful Offender Reentry to Protect the Public, the Employees, and the Offenders from Victimization.