

A d d e n d u m

Iowa Department of Transportation
Office of Contracts

Date of Letting: July 17, 2012
Date of Addendum: June 20, 2012

B.O.	Proposal ID	Proposal Work Type	County	Project Number	Addendum
105	52-0806-306-A	PCC PAVEMENT - GRADE & REPLACE	JOHNSON	IM-080-6(276)244--13-52 IM-080-6(278)244--13-52 IM-080-6(306)244-13-52 IM-080-6(319)244-13-52	17JUL105.A01

Notice: Only the bid proposal holders receive this addendum and responsibility for notifying any potential subcontractors or suppliers remains with the proposal holder.

Make the following change to plan sheet A.1:

Replace plan sheet A.1 with attached plan sheet A.1

Make the following change to plan sheet J.9:

Replace plan sheet J.9 with attached plan sheet J.9

LETTING DATE
07-17-2012

JOHNSON Co.
PCC PAVEMENT - GRADE AND REPLACE
IM-80-6(306)244--13-52

No.	DESCRIPTION
A Sheets	Title Sheets
A.1	Title Sheet
B Sheets	Typical Cross Sections and Details
B.1 - 12	Typical Cross Sections and Details
C Sheets	Quantities and General Information
C.1	Project Description
C.1 - 3	Estimated Project Quantities
C.4	Estimate Reference Information
C.4	Standard Road Plans and Index of Tabulations
C.5	Pollution Prevention Plan
C.6	General Notes
C.6 - 13	Tabulations
C.14	Geotechnical Information
D Sheets	Mainline Plan and Profile Sheets
D.1 - 7	Dubuque St. Plan and Profiles
G Sheets	Survey Sheets
G.1 - 7	Reference Ties and Bench Marks
G.8 - 9	Horizontal Control Tab. for Mainline and Slide Roads
G.10 - 12	Alignment Coordinates, Curves, and Superelevations
J Sheets	Traffic Control and Staging Sheets
J.1	Traffic Control Plan and Staging Notes
J.1	Tabulation of Special Events
J.2	Staging Legend
J.2 - 20	Staging and Traffic Control Sheets
K Sheets	Interchange Sheets
K.1 - 2	Interchange Layout Sheets
K.3	RAMP "A" Plan and Profile Sheets
K.4	RAMP "B" Plan and Profile Sheets
K.5	RAMP "C" Plan and Profile Sheets
K.6	RAMP "D" Plan and Profile Sheets
L Sheets	Geometric, Staking and Jointing Sheets
L.1	Geometric & Staking Dubuque St., North of I-80
L.2 - 3	Jointing Dubuque St., North of I-80
L.4 - 5	Geometric & Staking Dub. St., A/C and B/D Intersections.
L.6 - 7	Jointing Dub. St., A/C and B/D Intersections.
L.8 - 11	Edge Profiles Dub. St., A/C and B/D Intersections.
M Sheets	Storm Sewer Sheets
M.1	Storm Sewer Tabulation
M.2	Storm Sewer Legend and Symbol Information Sheet
M.3 - 7	Storm Sewer Plan Sheets
M.8 - 9	Storm Sewer Profile Sheets
M.10	Modified 300-20 Continuous Trench Drain
N Sheets	Traffic Signal Sheets
N.1 - 7	Temporary Traffic Signal Sheets Dubuque St.
Q Sheets	Soils Sheets
Q.1 - 2	Soils Sheets Ramp C Plan and Profile
T Sheets	Earthwork Quantity Sheets
T.1 - 6	Earthwork Quantity Sheets
U Sheets	500 Series, Mod.Stds. and Detail Sheets
U.1 - 3	Modified Standards BA-108 and BA-104 and Detail Sheet
V Sheets	Bridge and Culvert Situation Plans
V.1 - 12	Bridge End Sections Situation Plans
W Sheets	Mainline Cross Sections
W.1	Cross Section Legged Sheet
W.2 - 14	Stg. 1 Dub. St., NB, Detour Shoulder Cross Sections
W.15 - 18	Stg. 1 Dub. St., S, Median Detour Cross Sections
W.19 - 23	Stg. 1 Dub. St., S, Median Detour Cross Sections
W.24 - 28	Stg. 1 Dub. St., N, Median Detour Cross Sections
W.29 - 41	Stg. 1 Ramp B Detour Shoulder Cross Sections
W.42 - 45	Stg. 2A Dub. St., S, N. of I-80 Cross Sections
W.46 - 57	Stg. 2A Dub. St., S, N. of I-80 Cross Sections
W.58 - 68	Stg. 2A Ramp B Lt. Side Cross Sections
W.69 - 74	Stg. 2B Dub. St., S, N. of I-80 Cross Sections
W.75 - 86	Stg. 2B Ramp B Rt. Side Cross Sections
W.87 - 97	Stg. 3 Dub. St., NB, S. of I-80 Cross Sections
W.98 - 108	Stg. 3 Dub. St., NB, N. of I-80 Cross Sections
W.109 - 122	Stg. 3 Ramp A Cross Sections
	* Color Plan Sheets

Iowa Department of Transportation
Highway Division

PLANS OF PROPOSED IMPROVEMENT ON THE

INTERSTATE ROAD SYSTEM

JOHNSON COUNTY

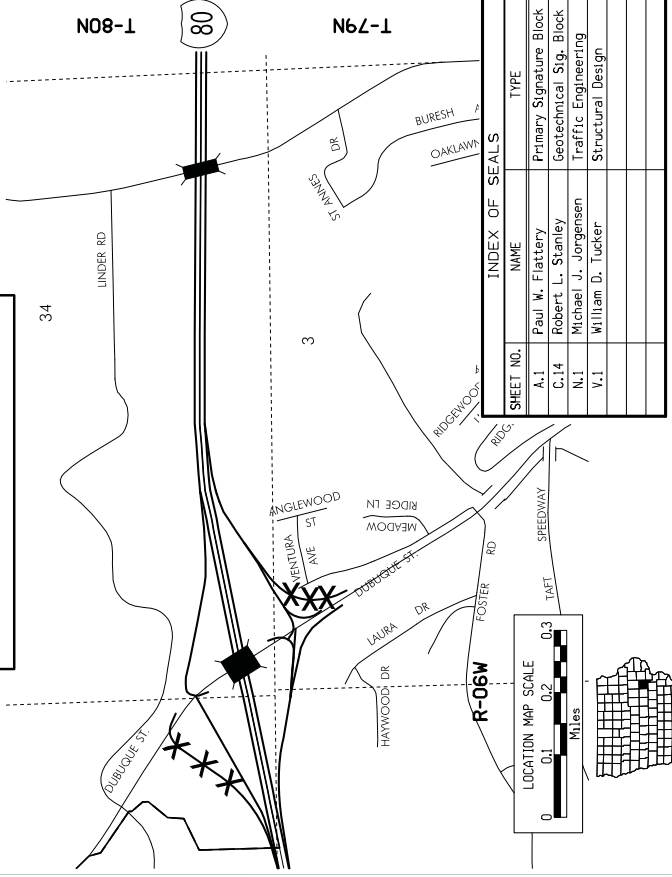
PCC PAVEMENT - GRADE AND REPLACE

Dubuque St. Interchange in Iowa City

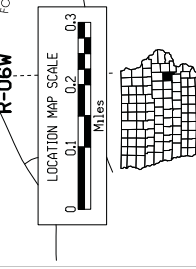
SCALE: As Noted

Refer to the Proposal Form for list of applicable specifications.
Value Engineering Specs. Refer to Article 1005.15 of the Specifications.

NO MILEAGE SUMMARY



SHEET NO.	NAME	TYPE
A.1	Paul W. Flattery	Primary Signature Block
C.14	Robert L. Stanley	Geotechnical Sig. Block
N.1	Michael J. Jorgensen	Traffic Engineering
V.1	William D. Tucker	Structural Design



REVISIONS	DATE	BY
PROJECT IDENTIFICATION NUMBER	98-52-080-010	
PROJECT NUMBER	IM-80-6(306)244--13-52	
R.O.W. PROJECT NUMBER		

DESIGN DATA RURAL	DESIGN DATA RURAL
2010 AADT 7550 V.P.D.	2010 AADT 2402 V.P.D.
2030 AADT 11219 V.P.D.	2030 AADT 3569 V.P.D.
2030 DHV 3 %	2030 DHV 5 %
TRUCKS	TRUCKS
Total Design ESALS	Total Design ESALS

DESIGN DATA URBAN
2010 AADT 11124 V.P.D.
2030 AADT 17674 V.P.D.
2030 DHV 3 %
TRUCKS
Total Design ESALS

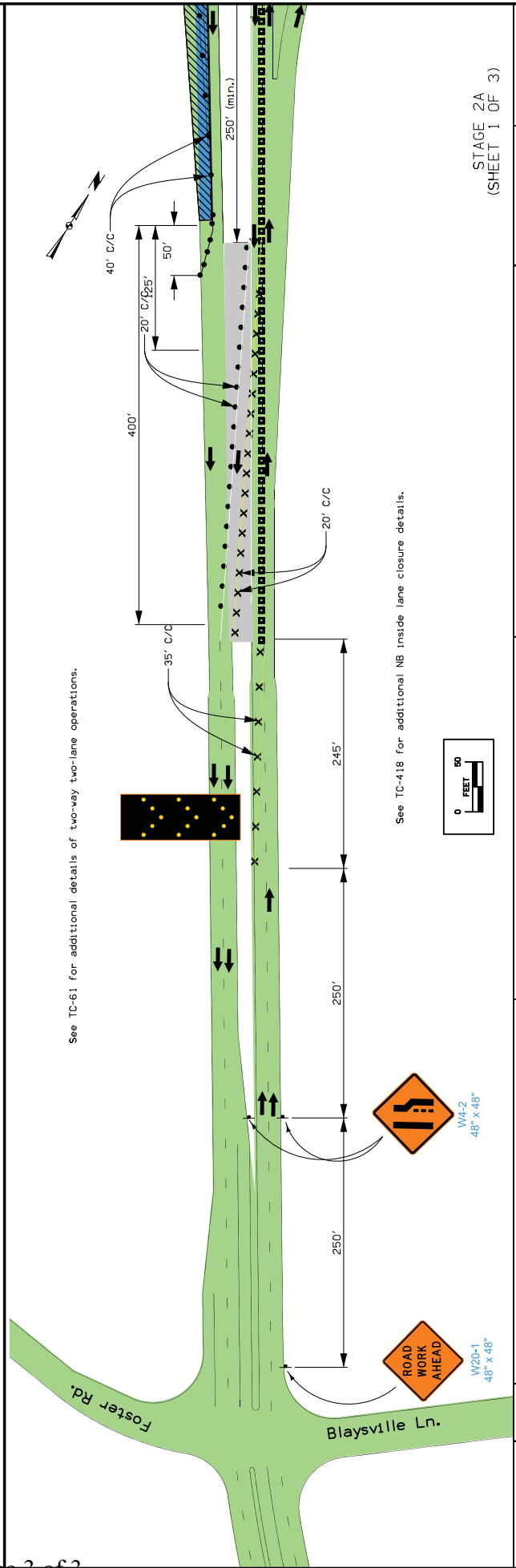
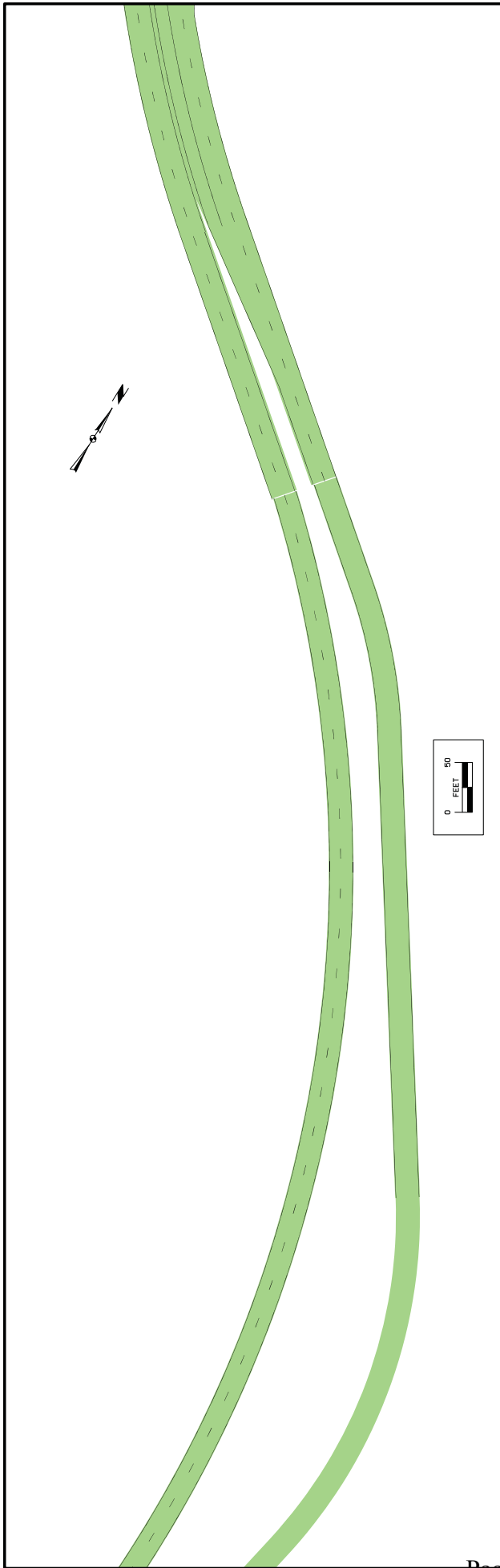
ROADWAY DESIGN

I hereby certify that this engineering document was prepared by me or under my direct professional supervision and that I am a duly licensed Professional Engineer under the laws of the State of Iowa.

Signature: *Paul W. Flattery*
 Paul W. Flattery
 Printed or "Typed" Name
 My license renewal date is December 31, 2013

Professional Engineer
 Paul W. Flattery
 License No. 12982
 State of Iowa
 Date: 06-07-2012

Pages or Sheets covered by this seal: A.1, B.1-B.12, C.1-C.13, D.1-D.7, E.1-E.12, J.1-J.20, K.1-K.6, L.1-L.11, M.1-M.10, N.1-N.3, O.1-O.3, W.1-W.12



STAGE 2A
(SHEET 1 OF 3)

ENGLISH	6/15/2012	jbutter	W:\Projects\20800\0098\Design\Project_308\520803063.dwg
FLATTERY BUTTOLPH	JOHNSON COUNTY	PROJECT NUMBER	IM-80-6(306)244--13-52
DOM DOT	DESIGN TEAM	SHEET NUMBER	J.9