

# A d d e n d u m

Iowa Department of Transportation  
Office of Contracts

Date of Letting: June 19, 2012  
Date of Addendum: June 1, 2012

<b>B.O.</b>	<b>Proposal ID</b>	<b>Proposal Work Type</b>	<b>County</b>	<b>Project Number</b>	<b>Addendum</b>
356	00-000S-560	Dynamic Message Signs	Statewide	ITS-000-S(560)--25-00	19jun356.a01

---

Notice: Only the bid proposal holders receive this addendum and responsibility for notifying any potential subcontractors or suppliers remains with the proposal holder.

---

Make the following changes to the PROPOSAL SCHEDULE OF PRICES:

Change Line No. 0290 2528-8445113 FLAGGERS from 120.000 EACH to 40.000 EACH and Bid Amount from 39,000.00 to 13,000.00.

Change Line No. 0300 2528-8445115 PILOT CARS from 60.000 EACH to 20.000 EACH and Bid Amount from 29,400.00 to 9,800.00.

If the quantities are not changed on the proposal form, the bid amounts will be extended using the unit price times the correct quantities as shown here. The Unit Price remains the same.

Make the following change to the Plan Sheet A.1:

Replace Tab.: STANDARD BRIDGE PLANS  
With Attached Tab.: STANDARD BRIDGE PLANS

Steel Overhead Sign Truss Standard Sheet SOST-01-11

Add the following text at the bottom of the list in the Index for Steel Overhead Sign Truss Standards: "SOST-18-11 Conduit Location Details"

Steel Overhead Sign Truss Standard Sheet SOST-06-11

Replace SOST-06-11 with a modified SOST-06-11 sheet that includes hand hole details, electrical inlet details and conduit location information. (See attached sheet.)

Steel Overhead Sign Truss Standard Sheet SOST-17-11

Replace SOST-17-11 with a modified SOST-17-11 sheet that includes a note stating that electrical conduit is required in footings supporting trusses with dynamic message signs. (See attached sheet.)

Steel Overhead Sign Truss Standard Sheet SOST-18-11

Add a new SOST-18-11 sheet that shows conduit location details in footings. (See attached sheet.)

STANDARD BRIDGE PLANS

The following Standard Bridge Plans shall be considered applicable to construction work on this project.

Number	Date
SOST-01-11	09/11
SOST-03-11	09/11
Modified SOST-06-11	06/12
SOST-08-11	09/11
SOST-09-11	09/11
Modified SOST-17-11	06/12
SOST-18-11	06/12





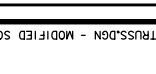
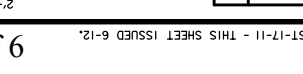
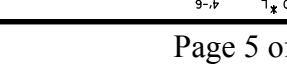
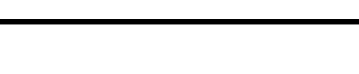
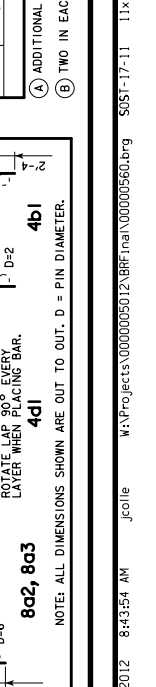
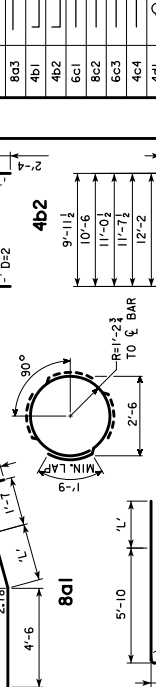
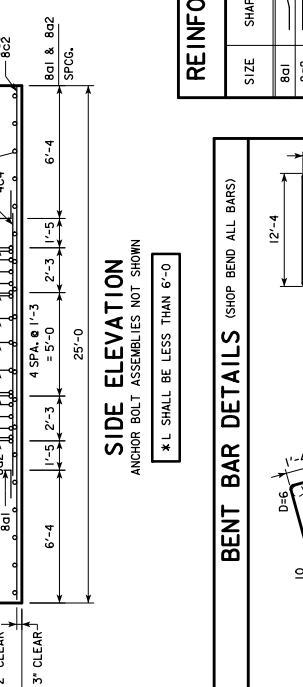
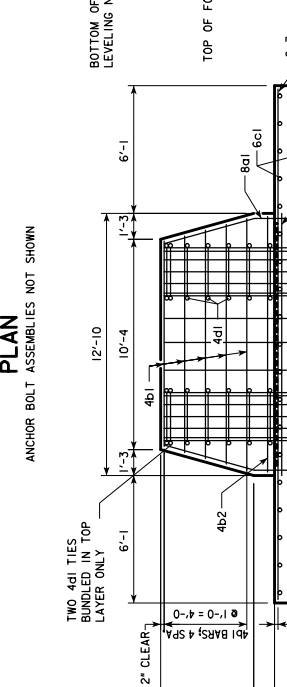
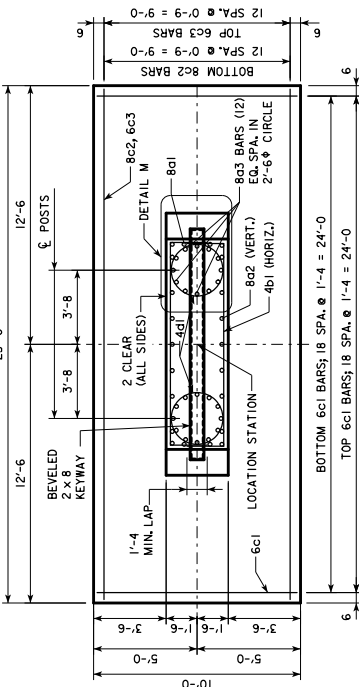
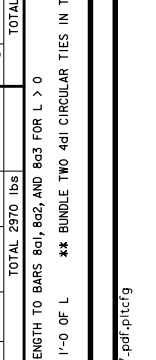
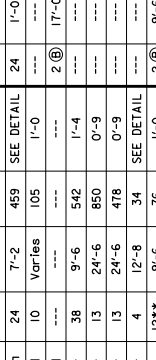
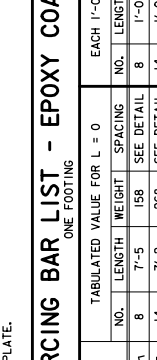
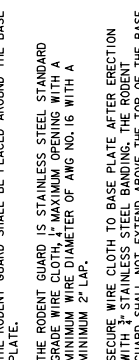
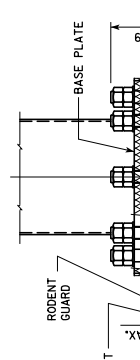
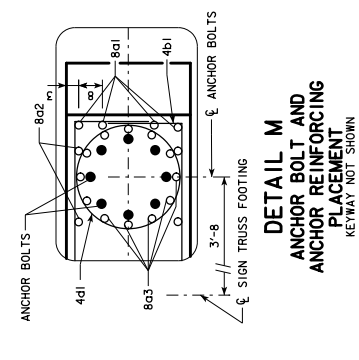
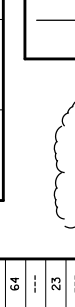
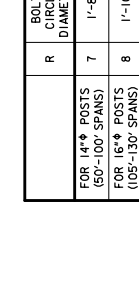
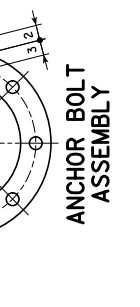
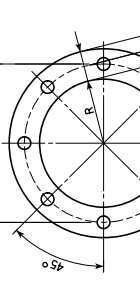
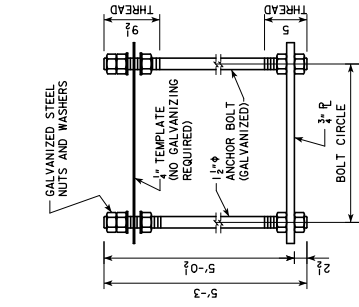
**GENERAL NOTES:**

STRUCTURAL CONCRETE, CLASS C, SHALL BE USED FOR THE FOOTING.  
 EXCAVATION FOR FOOTING SHALL BE TO NEAT LINES AND CONCRETE SHALL BE PLOTTED AGAINST THE UNDISTURBED MATERIAL. ALL EXCAVATION FOR THE FOOTING SHALL BE DISPOSED OF IN THE AREA ADJACENT TO THE FOOTING AND SHAPED TO NORMAL GROUND CONTOUR, UNLESS OTHERWISE NOTED. THE DESIGN SHALL BE TO PROVIDE MAXIMUM DESIGN BEARING CAPACITY IS 1.0 TONS PER SQUARE FOOT.

THE REQUIREMENTS PER FOOTING ARE TWO ANCHOR BOLT ASSEMBLIES INCLUDING SHIMS, NUTS (5 PER BOLT) AND WASHERS. REFER TO HARDWARE CLASSIFICATION TABLE FOR MATERIALS AND GALVANIZING REQUIREMENTS.  
 PRICE BID FOR CONTRACT ITEMS SHALL INCLUDE ALL LABOR AND MATERIALS NECESSARY TO CONSTRUCT OVERHEAD SIGN TRUSS ASSEMBLY. THE COST OF FURNISHING AND INSTALLING ANCHOR BOLT ASSEMBLIES, CONDUIT, AND RODENT GUARDS ARE TO BE INCLUDED IN THE UNIT PRICE BID FOR STRUCTURAL CONCRETE. CONTRACT ITEMS FOR OVERHEAD SIGN FOOTING CONSTRUCTION ARE:  
 EPOXY COATED REINFORCING STEEL POUNDS  
 STRUCTURAL CONCRETE (MISCELLANEOUS) CUBIC YARDS  
 EXCAVATION CUBIC YARDS OF CLASS SPECIFIED  
 ALL ANCHOR BOLT MATERIAL SHALL COMPLY WITH THE REQUIREMENTS OF IOWA DOT MATERIALS IM 453.08.

**FOR DMS TRUSSES ONLY**  
 ELECTRICAL CONDUIT IS REQUIRED IN FOOTINGS SUPPORTING TRUSSES WITH DYNAMIC MESSAGE SIGNS. SEE STANDARD SHEET SOST-17-11 FOR CONDUIT LOCATION DETAILS.

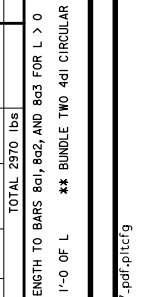
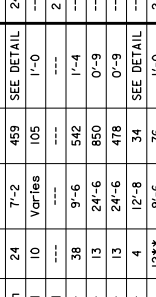
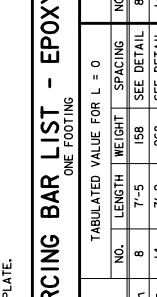
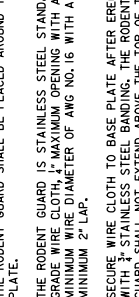
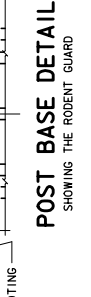
TOP-OF-WALL ELEVATION IS TO BE SHOWN AS HIGH POINT OF FOUNDATION AS DIRECTED BY THE ENGINEER.



**ANCHOR BOLT ASSEMBLY**

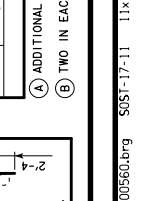
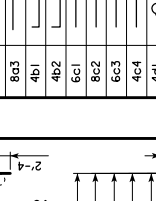
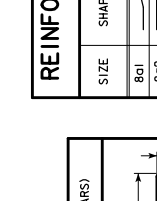
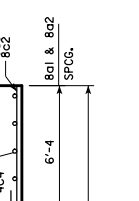
FOR DMS TRUSSES ONLY  
 ELECTRICAL CONDUIT IS REQUIRED IN FOOTINGS SUPPORTING TRUSSES WITH DYNAMIC MESSAGE SIGNS. SEE STANDARD SHEET SOST-17-11 FOR CONDUIT LOCATION DETAILS.

TOP-OF-WALL ELEVATION IS TO BE SHOWN AS HIGH POINT OF FOUNDATION AS DIRECTED BY THE ENGINEER.



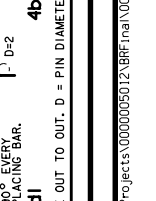
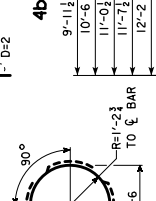
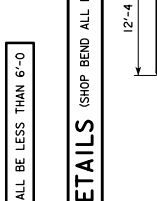
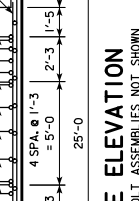
**DETAIL M ANCHOR BOLT AND ANCHOR REINFORCEMENT PLACEMENT**

KEYWAY NOT SHOWN



**POST BASE DETAIL**

SHOWING THE RODENT GUARD



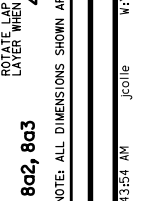
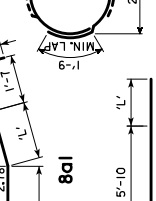
**REINFORCING BAR LIST - EPOXY COATED**

ONE FOOTING

SIZE	SHAPE	TABULATED VALUE FOR L = 0	EACH 1'-0" OF L
801	8	7'-5	158
802	14	7'-2	268
803	24	7'-2	459
4b1	10	Varies	105
4b2	38	9'-6	542
8c1	13	24'-6	850
8c2	13	24'-6	850
8c3	4	12'-8	34
4c4	12**	9'-6	76
4d1	2 @	17'-0	23
4d2	2 @	17'-0	23
TOTAL 2970 lbs			TOTAL 158 lbs

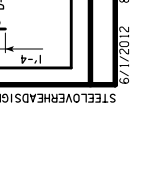
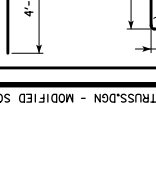
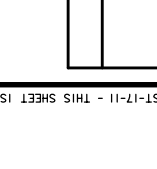
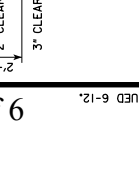
ADDITIONAL LENGTH TO BARS 801, 802, AND 803 FOR L > 0  
 \*\* TWO IN EACH 1'-0" OF L

REINFORCING BAR LIST - EPOXY COATED



**BENT BAR DETAILS**

(SHOP BEND ALL BARS)



**CONCRETE PLACEMENT QUANTITIES**

(ONE FOOTING)

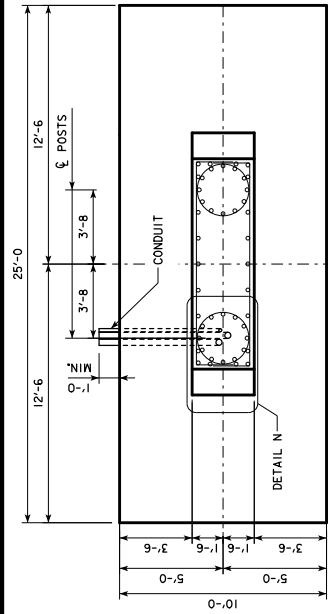
ITEM	L = 0	EACH 1'-0" OF L
WALL	5.71	1.41
FOOTING	18.52	---
TOTAL (C.Y.)	24.23	1.41

APPROVED BY BRIDGE ENGINEER

STANDARD DESIGN

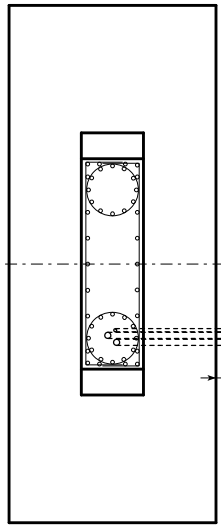
SEPTEMBER, 2011

MODIFIED SOST-17-11

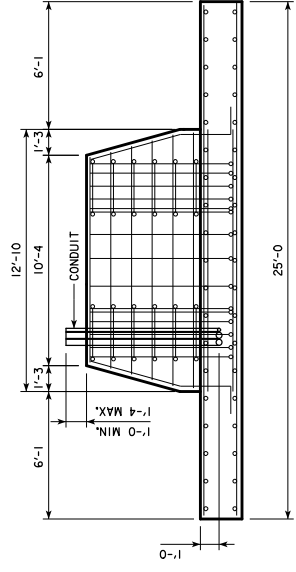


**FOOTING PLAN FOR LEFT TRUSS SUPPORT**  
 LOCATED AT MEDIAN FOR TYPICAL DESIGNS  
 ANCHOR BOLT ASSEMBLIES AND SELECTED REINFORCING BARS NOT SHOWN

TRAFFIC FLOW →



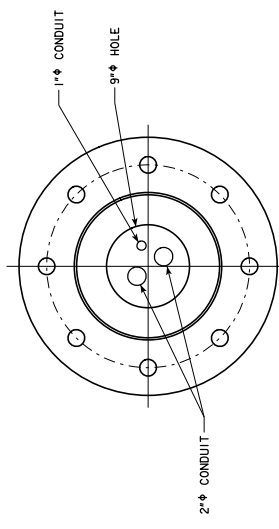
**FOOTING PLAN FOR RIGHT TRUSS SUPPORT**  
 LOCATED AT OUTSIDE SHOULDER FOR TYPICAL DESIGNS  
 ANCHOR BOLT ASSEMBLIES AND SELECTED REINFORCING BARS NOT SHOWN



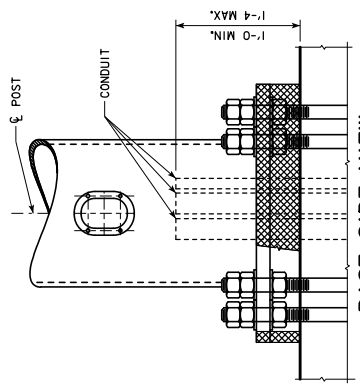
**SIDE ELEVATION**  
 ANCHOR BOLT ASSEMBLIES NOT SHOWN

**GENERAL NOTES:**

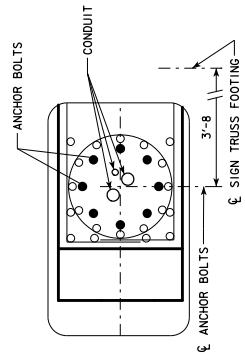
FOR FOOTINGS SUPPORTING TRUSSES WITH DYNAMIC MESSAGE SIGNS, PLACE ONE CONDUIT AND TWO 2" CONDUIT WITHIN THE ANCHOR BOLT ASSEMBLY. THE CONDUIT SHALL BE PLACED WITHIN THE ANCHOR BOLT ASSEMBLY AND SHALL BE PLACED WITHIN THE ANCHOR BOLT ASSEMBLY. THE CONDUIT SHALL BE PLACED WITHIN THE ANCHOR BOLT ASSEMBLY. THE CONDUIT SHALL BE PLACED WITHIN THE ANCHOR BOLT ASSEMBLY.



**BASE PLATE PLAN**  
 CONDUIT IS PRESENT ONLY IN POSTS WITH HAND HOLES



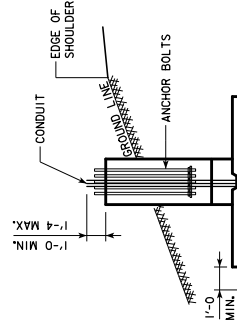
**BASE SIDE VIEW**  
 OPPOSITE OF TRAFFIC SIDE  
 NOT ALL ANCHOR BOLTS SHOWN



**DETAIL N**  
 LOCATION OF CONDUIT WITHIN ANCHOR BOLT CIRCLE

**THIS SHEET FOR DMS TRUSSES ONLY**  
 ELECTRICAL CONDUIT IS REQUIRED IN FOOTINGS SUPPORTING TRUSSES WITH DYNAMIC MESSAGE SIGNS.

NOTES: SEE THE FOLLOWING STANDARD SHEETS FOR ELECTRICAL ACCESS DETAILS IN SUPPORT POSTS FOR DMS TRUSS DESIGNS:  
 STANDARD SHEET SOST-06-11 FOR 14" POSTS (50'-100' TRUSS SPANS)  
 STANDARD SHEET SOST-07-11 FOR 18" POSTS (105'-130' TRUSS SPANS)



**END ELEVATION**  
 REINFORCING BARS NOT SHOWN

ADDENDUM:  
 THIS SHEET  
 ADDED

APPROVED BY BRIDGE ENGINEER  
*Thomas K. McQuinn*

LATEST REVISION DATE

Iowa Department of Transportation  
 Highway Division  
 STANDARD DESIGN  
**STEEL OVERHEAD SIGN TRUSS**  
 SEPTEMBER, 2011

CONDUIT LOCATION DETAILS  
 SOST-18-11  
 50'-130' SPANS