



## IOWA PROSPECTIVE PLANTINGS

The annual *Prospective Plantings* report published by USDA National Agricultural Statistics Service is based on the voluntary responses from nearly two thousand Iowa producers. Data collection began February 28, with final interviews completed on March 19. This report provides an indication of the acres farmers intend to plant. Actual plantings will depend greatly upon weather, economic conditions and the availability of production inputs at the time producers must make their final planting decisions.

**Corn:** As of March 1, Iowa farmers intend to plant 14.6 million acres of corn for all purposes in 2012. This is up 500,000 acres from 2011 and, if realized, would be the largest planted acreage on record. The previous record, 14.4 million acres, was set in 1981.

**Soybeans:** Producers intend to plant 8.80 million acres of soybeans in Iowa this year, down 6 percent from 2011. If realized this would be only the second time in 18 years Iowa farmers will plant less than 9.00 million acres of soybeans.

**Oats:** Farmers intend to plant 130,000 acres of oats for all purposes, up 10,000 acres from last year's record low. If realized, this would be the second smallest acreage on record.

**All Hay:** Farmers in Iowa expect to harvest 1.15 million acres of hay for the 2012 crop year, up 10,000 acres from last year. If realized, this will be the second lowest in state history, trailing only 1.14 million acres last year.

### Prospective Plantings, March 1, Iowa and United States

Crop	Iowa				United States			
	2010	2011	Indicated 2012	'12 as % of '11	2010	2011	Indicated 2012	'12 as % of '11
	<i>1,000 Acres</i>	<i>1,000 Acres</i>	<i>1,000 Acres</i>	<i>Percent</i>	<i>1,000 Acres</i>	<i>1,000 Acres</i>	<i>1,000 Acres</i>	<i>Percent</i>
Corn, all	13,400	14,100	14,600	104	88,192	91,921	95,864	104
Oats	180	120	130	108	3,138	2,496	2,863	115
Soybeans	9,800	9,350	8,800	94	77,404	74,976	73,902	99
Hay, all <sup>1</sup>	1,200	1,140	1,150	101	59,872	55,633	57,348	103
Wheat, all	15	22	25	114	53,593	54,409	55,908	103

<sup>1</sup> Acres for harvest.

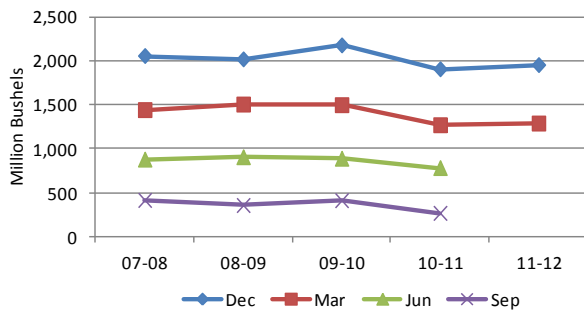
# IOWA GRAIN STOCKS

**Iowa corn stocks** in all positions on March 1, 2012 totaled 1.29 billion bushels, up 1 percent from last year according to the USDA National Agricultural Statistics Service – *Grain Stocks* report. Of the total stocks, 57 percent were stored on-farm. The December 2011 - February 2012 indicated disappearance totaled 666 million bushels, 5 percent more than the 636 million bushels used during the same period last year.

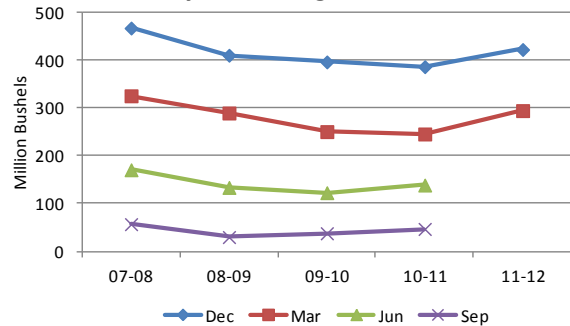
**Iowa soybeans** stored in all positions on March 1, 2012 totaled 295 million bushels, up 20 percent from the 246 million bushels on hand March 1, 2011. Of the total stocks, 41 percent were stored on-farm. Indicated disappearance for the December 2011 - February 2012 period was 128 million bushels, 9 percent less than the 141 million bushels used during the same quarter last year.

**Iowa oat stocks** stored in all positions on March 1, 2012 totaled 7.82 million bushels, up 15 percent from the 6.78 million bushels on hand March 1, 2011. Of the total stocks, 14 percent were stored on-farm.

**Corn Stocks  
by Marketing Year, Iowa**



**Soybean Stocks  
by Marketing Year, Iowa**



## Stocks of Grain, March 1, Iowa and United States

Position and Grain	Iowa			United States		
	March 1 2011	March 1 2012	'12 as % of '11	March 1 2010	March 1 2011	'12 as % of '11
	(1,000 Bushels)	(1,000 Bushels)	(Percent)	(1,000 Bushels)	(1,000 Bushels)	(Percent)
<b>On-Farm Stocks</b> .....						
Corn .....	680,000	740,000	109	3,384,000	3,192,000	94
Soybeans .....	94,000	120,000	128	505,000	555,000	110
Oats .....	1,150	1,100	96	26,950	19,750	73
Wheat .....	(D)	(D)	(X)	288,010	217,400	75
<b>Off-Farm Stocks</b> <sup>1</sup> .....						
Corn .....	590,213	548,599	93	3,139,228	2,817,260	90
Soybeans .....	152,397	175,109	115	743,800	817,258	110
Oats .....	5,634	6,720	119	59,361	52,788	89
Wheat .....	1,686	1,407	83	1,137,292	983,255	86
<b>Total Stocks</b> .....						
Corn .....	1,270,213	1,288,599	101	6,523,228	6,009,260	92
Soybeans .....	246,397	295,109	120	1,248,800	1,372,258	110
Oats .....	6,784	7,820	115	86,311	72,538	84
Wheat .....	(D)	(D)	(X)	1,425,302	1,200,655	84

(D) Withheld to avoid disclosing data for individual operations.

(X) Not applicable

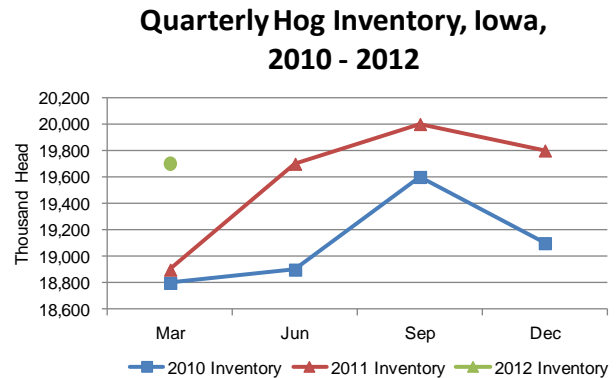
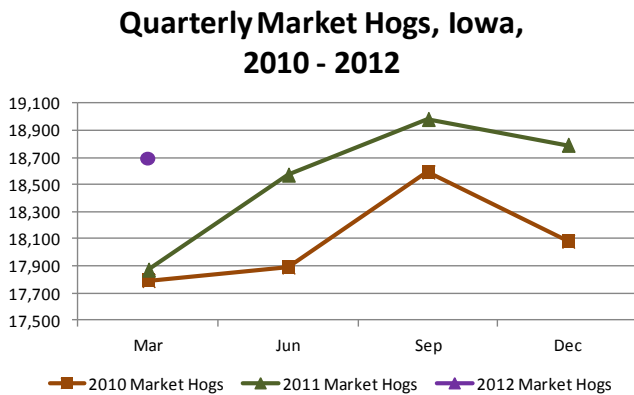
<sup>1</sup> Includes stocks at mills, elevators, warehouses, terminals, and processors.

## IOWA HOGS & PIGS

On March 1, 2012 there were 19.7 million hogs and pigs on Iowa farms according to the USDA National Agricultural Statistics Service –*Hogs and Pigs* report. The March 1 inventory was up 4 percent from a year ago and became the highest March 1 inventory on record.

The December 2011-February 2012 pig crop was 4.94 million head. A total of 480,000 sows farrowed with an average litter size of 10.3 pigs per sow.

As of March 1, producers planned to farrow 485,000 head of sows and gilts in the March-May 2012 quarter. Farrowing intentions for the June-August 2012 period were estimated at 480,000 as of March 1, 2012.



### Hogs and Pigs: Breeding, Market, and Total Inventory By Selected States and United States, March 1, 2011-2012

[Data may not add to totals due to rounding.]

State	Breeding			Market			Total		
	2011	2012	'12 as % of '11	2011	2012	'12 as % of '11	2011	2012	'12 as % of '11
	(1,000 Head)	(1,000 Head)	(Percent)	(1,000 Head)	(1,000 Head)	(Percent)	(1,000 Head)	(1,000 Head)	(Percent)
Illinois .....	470	510	109	3,930	4,140	105	4,400	4,650	106
<b>Iowa .....</b>	<b>1,030</b>	<b>1,010</b>	<b>98</b>	<b>17,870</b>	<b>18,690</b>	<b>105</b>	<b>18,900</b>	<b>19,700</b>	<b>104</b>
Minnesota .....	560	550	98	7,040	7,050	100	7,600	7,600	100
Missouri .....	360	360	100	2,490	2,290	92	2,850	2,650	93
Nebraska .....	370	390	105	2,730	2,710	99	3,100	3,100	100
North Carolina .....	850	860	101	7,650	7,740	101	8,500	8,600	101
United States .....	5,788	5,820	101	57,896	59,052	102	63,684	64,872	102

### Market Hogs and Pigs: Inventory Number by Weight Group, Selected States, and United States, March 1, 2011-2012

[Data may not add to totals due to rounding.]

State	Under 50 lbs.		50-119 lbs.		120-179 lbs.		180 lbs. and over	
	2011	2012	2011	2012	2011	2012	2011	2012
	(1,000 Head)	(1,000 Head)	(1,000 Head)	(1,000 Head)	(1,000 Head)	(1,000 Head)	(1,000 Head)	(1,000 Head)
Illinois .....	1,290	1,410	1,190	1,280	760	750	690	700
<b>Iowa .....</b>	<b>4,630</b>	<b>5,000</b>	<b>5,630</b>	<b>5,850</b>	<b>4,490</b>	<b>4,540</b>	<b>3,120</b>	<b>3,300</b>
Minnesota .....	2,440	2,360	2,150	2,180	1,430	1,570	1,020	940
Missouri .....	1,080	1,000	580	530	410	370	420	390
Nebraska .....	910	880	800	790	595	605	425	435
North Carolina .....	2,820	3,030	1,760	1,810	1,620	1,560	1,450	1,340
United States .....	18,863	19,332	16,060	16,456	12,361	12,569	10,612	10,695

**Prices Received Index Summary, United States**

Prices Received	Mar 2011	Feb 2012	Mar <sup>1</sup> 2012	Mar 2011	Feb 2012	Mar <sup>1</sup> 2012
	1910-14=100			1990-92=100		
All Products .....	1100	1148	1179	173	181	186
Crops .....	979	1018	1054	198	205	213
Oilseeds .....	1250	1208	1288	228	220	235
Feed Grains & Hay .....	820	955	984	230	268	276
Lvstk .....	1166	1208	1234	152	158	161
Meat Animals .....	1538	1694	1717	151	166	169
Dairy Prod. ....	1255	1089	1071	156	136	133

<sup>1</sup> Preliminary

**Prices Received by Farmers, Iowa**

Item	IOWA		
	March 2011	February 2012	March <sup>1</sup> 2012
	-----Dollars-----		
Corn .....Bu	5.32	6.21	6.40
Oats .....Bu	3.17	3.61	3.70
Soybeans .....Bu	12.40	12.10	13.10
Alfalfa, baled ..... Ton	118.00	152.00	149.00
All Hay, baled ..... Ton	110.00	139.00	140.00
Milk Cows <sup>2</sup> ..... Cwt	(NA)	(NA)	(NA)
Milk (whls) ..... Cwt	20.70	18.30	17.60

(NA) Not available.

<sup>1</sup>Preliminary <sup>2</sup> Prices published January, April, July, and October.

**Prices Received by Farmers, United States**

Item	March 2011	February 2012	March <sup>1</sup> 2012
	-----Dollars-----		
Corn ..... Bu	5.53	6.28	6.48
Oats ..... Bu	3.28	3.46	3.58
Soybeans ..... Bu	12.70	12.20	13.10
Alfalfa, bales .....Ton	142.00	198.00	201.00
All Hay, baled .....Ton	126.00	176.00	181.00
Hogs, all .....Cwt	62.90	65.50	65.70
Sows .....Cwt	58.00	58.30	60.40
Brw & Gilts .....Cwt	63.10	65.80	65.80
Beef Cattle .....Cwt	115.00	127.00	130.00
Cows .....Cwt	75.20	82.00	84.50
Strs & Hfrs .....Cwt	118.00	131.00	134.00
Calves .....Cwt	148.00	184.00	185.00
Milk Cows <sup>2</sup> ..... Hd	(NA)	(NA)	(NA)
Milk (whls) .....Cwt	20.40	17.70	17.40
Eggs (mkt) <sup>3</sup> ..... Doz	0.652	0.669	0.791

(NA) Not available. <sup>1</sup>Preliminary <sup>2</sup> Prices published January, April, July, and October. <sup>3</sup> Eggs are mid-month prices.

**Prices Paid Index Summary, United States**

Prices Paid	Mar 2011	Feb 2012	Mar 2012	Mar 2011	Feb 2012	Mar 2012
	1910-14=100			1990-92=100		
Prices Paid <sup>1</sup> .....	2674	2785	2793	201	209	210
Feed .....	1037	1092	1106	212	224	226
Lvstk/Poultry ..	2027	2367	2353	159	185	184
Fertilizer .....	1165	1224	1179	318	334	322
Chemicals .....	894	948	973	145	153	157
Fuels .....	2801	2782	2910	363	360	377
Ratio <sup>2</sup> .....	(NA)	(NA)	(NA)	86	87	89
Parity Ratio <sup>3</sup> ..	41	41	42	(NA)	(NA)	(NA)

(NA) Not available. <sup>1</sup>Prices paid by farmers for commodities and services, interest, taxes, and farm wage rates. <sup>2</sup> Received/Paid <sup>3</sup> Ratio of index of prices received to index of prices paid for commodities and services, interest, taxes, and farm wage rates.