

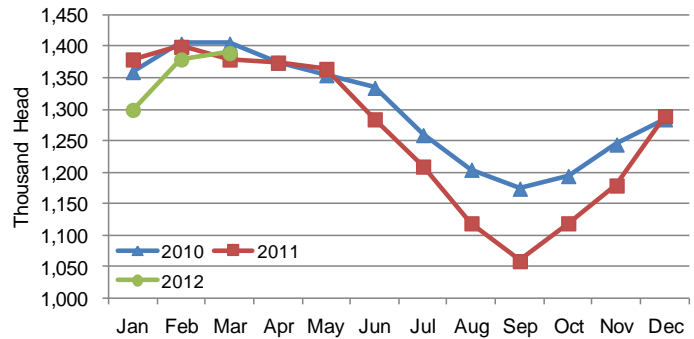
CATTLE ON FEED

Cattle and calves on feed for slaughter market in Iowa for all feedlots totaled 1.39 million on March 1, 2012 according to the USDA, National Agricultural Statistics Service, Iowa Field Office. The inventory is up 1 percent from February 1, 2012 and up 1 percent from March 1, 2011. Feedlots with a capacity greater than 1,000 head had 670,000 head on feed, up 3 percent from last month and up 3 percent from last year. Feedlots with a capacity less than 1,000 head had 720,000 head on feed, down 1 percent from last month and down 1 percent from last year.

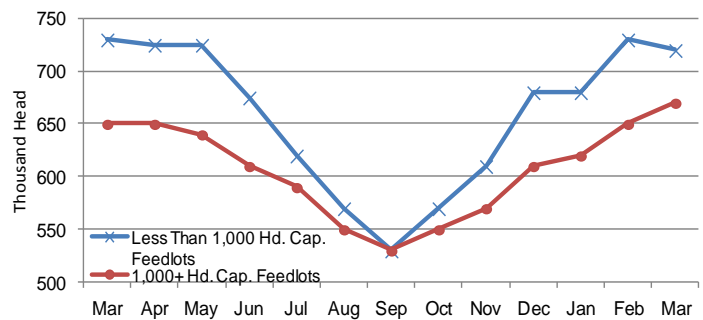
Placements during February totaled 135,000 head, a decrease of 39 percent from last month but up 6 percent from last year. Feedlots with a capacity greater than 1,000 head placed 85,000 head, down 17 percent from last month but up 20 percent from last year. Feedlots with a capacity less than 1,000 head placed 50,000 head. This is down 57 percent from last month and down 9 percent from last year.

Marketings for February were 119,000 head, down 10 percent from last month and down 15 percent from last year. Feedlots with a capacity greater than 1,000 head marketed 62,000 head, down 11 percent from last month and down 22 percent from last year. Feedlots with a capacity less than 1,000 head marketed 57,000 head, down 8 percent from last month and down 5 percent from last year. **Other disappearance** totaled 6,000 head.

Cattle on Feed, Inventory on all Feedlots, Iowa: 2010-2012



Cattle on Feed, Inventory by Feedlot Capacity, Iowa: Past 12 Months



All Cattle on Feed, Iowa

Item	Lots 1,000+ Head (1,000 Head)	Lots Less than 1,000 Head (1,000 Head)	All Lots (1,000 Head)
Cattle on Feed, February 1, 2012	650	730	1,380
February Placements	85	50	135
February Marketings	62	57	119
February Other Disappearance	3	3	6
Cattle on Feed, March 1, 2012	670	720	1,390

Cattle on Feed: Number on Feed, Placements, Marketings, and Other Disappearance by Month, 1,000+ Capacity Feedlots

[Cattle and calves on feed are animals for slaughter market being fed a ration of grain or other concentrates and are expected to produce a carcass that will grade select or better.]

State	Cattle on Feed March 1			Placements during February			Marketings during February			February Disappearance other than Slaughter ¹		
	2011	2012	'12 as % of '11	2011	2012	'12 as % of '11	2011	2012	'12 as % of '11	2011	2012	'12 as % of '11
	(1,000 Head)	(1,000 Head)	(Percent)	(1,000 Head)	(1,000 Head)	(Percent)	(1,000 Head)	(1,000 Head)	(Percent)	(1,000 Head)	(1,000 Head)	(Percent)
Arizona	269	279	104	29	25	86	25	21	84	1	1	100
California	460	500	109	43	50	116	50	53	106	3	2	67
Colorado	1,070	1,090	102	215	165	77	210	200	95	5	15	300
Idaho	220	230	105	31	37	119	40	41	103	1	1	100
Iowa	650	670	103	71	85	120	79	62	78	2	3	150
Kansas	2,220	2,200	99	365	370	101	405	385	95	10	15	150
Nebraska	2,430	2,570	106	350	410	117	365	390	107	15	20	133
Oklahoma	360	340	94	60	48	80	73	61	84	2	2	100
South Dakota ..	265	260	98	45	47	104	48	45	94	2	2	100
Texas	2,830	2,840	100	380	380	100	405	415	102	15	25	167
Washington ...	205	233	114	31	41	132	30	32	107	3	3	100
Other States ..	407	465	114	47	56	119	61	50	82	2	4	200
United States ..	11,386	11,677	103	1,667	1,714	103	1,791	1,755	98	61	93	152

¹Includes death loss, movement from feedlots to pasture, and shipments to other feedlots for further feeding.

MILK PRODUCTION

Milk production in Iowa during February 2012 totalled 359 million pounds, up 6 percent from February 2011, according to the USDA, National Agricultural Statistics Service – *Milk Production* report. The average number of milk cows, at 205,000 head, was down 1 percent from February 2011. Production per cow averaged 1,750 pounds, up 7 percent from February 2011. The monthly rate per cow is the highest on record for February and the production is the largest for February since 1970.

Milk Cows and Production: Selected States, February 2011 and 2012

State	Milk Cows ¹		Milk Per Cow ²		Milk Production ²		
	2011	2012	2011	2012	2011	2012	Change from 2011
	(1,000 Head)	(1,000 Head)	(Pounds)	(Pounds)	(Million Pounds)	(Million Pounds)	(Percent)
Illinois	98	100	1,530	1,630	150	163	8.7
Indiana	171	175	1,585	1,700	271	298	10.0
Iowa	208	205	1,630	1,750	339	359	5.9
Kansas	122	123	1,615	1,710	197	210	6.6
Michigan	364	374	1,790	1,910	652	714	9.5
Minnesota	470	465	1,485	1,585	698	737	5.6
Missouri	95	93	1,140	1,215	108	113	4.6
Ohio	271	270	1,500	1,570	407	424	4.2
Wisconsin	1,266	1,266	1,585	1,715	2,007	2,171	8.2
23-State Total ³	8,408	8,510	1,665	1,782	13,997	15,162	8.3

¹ Includes dry cows, excludes heifers not yet fresh. ² Excludes milk sucked by calves. ³ As of February 2009, the 23 States are Arizona, California, Colorado, Florida, Idaho, Illinois, Indiana, Iowa, Kansas, Michigan, Minnesota, Missouri, New Mexico, New York, Ohio, Oregon, Pennsylvania, Texas, Utah, Vermont, Virginia, Washington, and Wisconsin.

EGG PRODUCTION

Egg production in Iowa for February 2012 was 1.11 billion eggs, down fractionally from a year ago and down 8 percent from last month. The total number of layers on hand during February 2012 was 51.2 million, down from 53.1 million layers in February 2011. Eggs per 100 layers for the month of February were 2,160 eggs, up from 2,086 eggs the previous year.

All Layers and Egg Production: Selected States, February 2011 and 2012

[Data may not add to totals due to rounding. Data by type of flock not shown for some states to avoid disclosing individual operations, data included in United States totals.]

State	Table egg layers in flocks 30,000 & above		All layers on hand		Eggs per 100 layers		Total egg production		Table egg production	
	2011	2012	2011	2012	2011	2012	2011	2012	2011	2012
	(Thousands)	(Thousands)	(Thousands)	(Thousands)	(Number)	(Number)	(Million eggs)	(Million eggs)	(Million eggs)	(Million eggs)
Indiana	22,923	23,503	23,656	24,210	2,135	2,127	505	515	493	502
Iowa	52,180	50,231	53,056	51,196	2,086	2,160	1,107	1,106	1,094	1,090
Minnesota	9,968	9,474	10,445	9,975	2,011	2,105	210	210	203	202
Nebraska	9,309	9,176	9,359	9,226	2,244	2,320	210	214	210	214
North Carolina	5,887	5,768	13,528	12,613	1,863	1,895	252	239	128	121
Ohio	26,964	27,439	27,477	27,972	2,089	2,131	574	596	(D)	(D)
United States	277,146	279,950	339,787	338,219	2,064	2,140	7,013	7,237	6,022	6,249

(D) Withheld to avoid disclosing data for individual operations.

Want More Information?

The National Agricultural Statistics Service publishes U.S., State, and County agricultural statistics for many commodities and data series. Quick Stats is a web based application that gives you the ability to query the agricultural census and survey statistics based on the simple filtering rules of What, Where, and When.

- What refers to the ability to filter data based on a specific Commodity or subject area.

- Where refers to the ability to filter data based on Location; a geographic level such as the entire United States, one or more specific States, one or more districts, and one or more counties.

- When refers to the ability to filter data based on Time, such as the year or a specific point in time.

Visit our web page at http://www.nass.usda.gov/Quick_Stats/ to check out the new Quick Stats Lite!

