

A d d e n d u m

Iowa Department of Transportation
Office of Contracts

Date of Letting: April 17, 2012
Date of Addendum: April 12, 2012

B.O.	Proposal ID	Proposal Work Type	County	Project Number	Addendum
011	78-0293-080	BRIDGE NEW - STEEL GIRDER	POTTAWATTAMIE	IM-NHS-029-3(80)52--03-78 IM-NHS-029-3(81)52--03-78	17APR011.A02

Notice: Only the bid proposal holders receive this addendum and responsibility for notifying any potential subcontractors or suppliers remains with the proposal holder.

Make the following changes to the PROPOSAL SCHEDULE OF PRICES:

Change Line No. 0380 2404-7775000 REINFORCING STEEL from 510,081.000 LB to 508,739.000 LB.

Change Line No. 0390 2404-7775005 REINFORCING STEEL, EPOXY COATED from 1,000,400.000 LB to 1,000,410.000 LB.

If the quantities are not changed on the proposal form, the bid amounts will be extended using the unit price times the correct quantities as shown here.

Make the following changes to plan IM-NHS-029-3(81)52--03-78:

Sheet No. 2:

Item No. 5 – Reinforcing Steel Quantity changes from 510081 to 508739

Item No. 6 – Reinforcing Steel, Epoxy Coated Quantity changes from 1000400 to 1000410

Sheet No. 15:

Replace Detail C and Section E-E with Pile Uplift Anchor Detail at Piers.

Replace 24 - 9f6 bars with 36 – 8f7 bars and quantity changes from 490 lb. – 481 lb. Reinforcing Steel – Totals change from 38,724 to 38,715

Sheet No. 18:

Replace Detail C and Section E-E with Pile Uplift Anchor Detail at Piers Replace 24 - 9f6 bars with 36 – 8f7 bars and quantity changes from 530 lb. – 481 lb.

Reinforcing Steel – Totals change from 45,883 to 45,834

Sheet No. 21:

Replace Detail C and Section E-E with Pile Uplift Anchor Detail at Piers.
Replace 48 - 9f6 bars with 72 - 8f7 bars and quantity changes from 1387 lb. - 961 lb. Reinforcing Steel - Totals change from 98,622 to 98,196

Sheet No. 24:

Replace Detail C and Section E-E with Pile Uplift Anchor Detail at Piers.
Replace 24 - 9f6 bars with 36 - 8f7 bars and quantity changes from 530 lb. - 481 lb. Reinforcing Steel - Totals change from 27,029 to 26,980

Sheet No. 27:

Replace Detail C and Section E-E with Pile Uplift Anchor Detail at Piers.
Replace 24 - 9f6 bars with 36 - 8f7 bars and quantity changes from 571 lb. - 481 lb. Reinforcing Steel - Totals change from 28,911 to 28,821

Sheet No. 30:

Replace Detail C and Section E-E with Pile Uplift Anchor Detail at Piers.
Replace 32 - 9f6 bars with 48 - 8f7 bars and quantity changes from 707 lb. - 641 lb. Reinforcing Steel - Totals change from 14,342 to 14,276

Sheet No. 33:

Replace Detail C and Section E-E with Pile Uplift Anchor Detail at Piers.
Replace 24 - 9f6 bars with 36 - 8f7 bars and quantity changes from 530 lb. - 481 lb. Reinforcing Steel - Totals change from 44,555 to 44,506

Sheet No. 36:

Replace Detail C and Section E-E with Pile Uplift Anchor Detail at Piers.
Replace 24 - 9f6 bars with 36 - 8f7 bars and quantity changes from 530 lb. - 481 lb. Reinforcing Steel - Totals change from 76,580 to 76,531

Sheet No. 39:

Replace Detail C and Section E-E with Pile Uplift Anchor Detail at Piers.
Replace 56 - 9f6 bars with 84 - 8f7 bars and quantity changes from 1618 lb. - 1121 lb. Reinforcing Steel - Totals change from 49,637 to 49,140

Sheet No. 42:

Replace Detail C and Section E-E with Pile Uplift Anchor Detail at Piers.
Replace 24 - 9f6 bars with 36 - 8f7 bars and quantity changes from 530 lb. - 481 lb. Reinforcing Steel - Totals change from 48,195 to 48,146

Sheet No. 45:

Replace Detail C and Section E-E with Pile Uplift Anchor Detail at Piers.
Replace 24 - 9f6 bars with 36 - 8f7 bars and quantity changes from 490 lb. - 481 lb. Reinforcing Steel - Totals change from 37,603 to 37,594

Sheet No. 48:

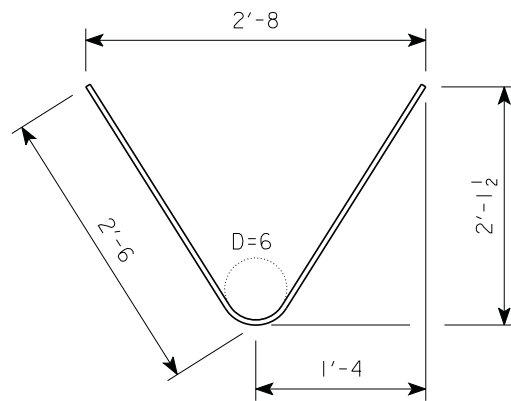
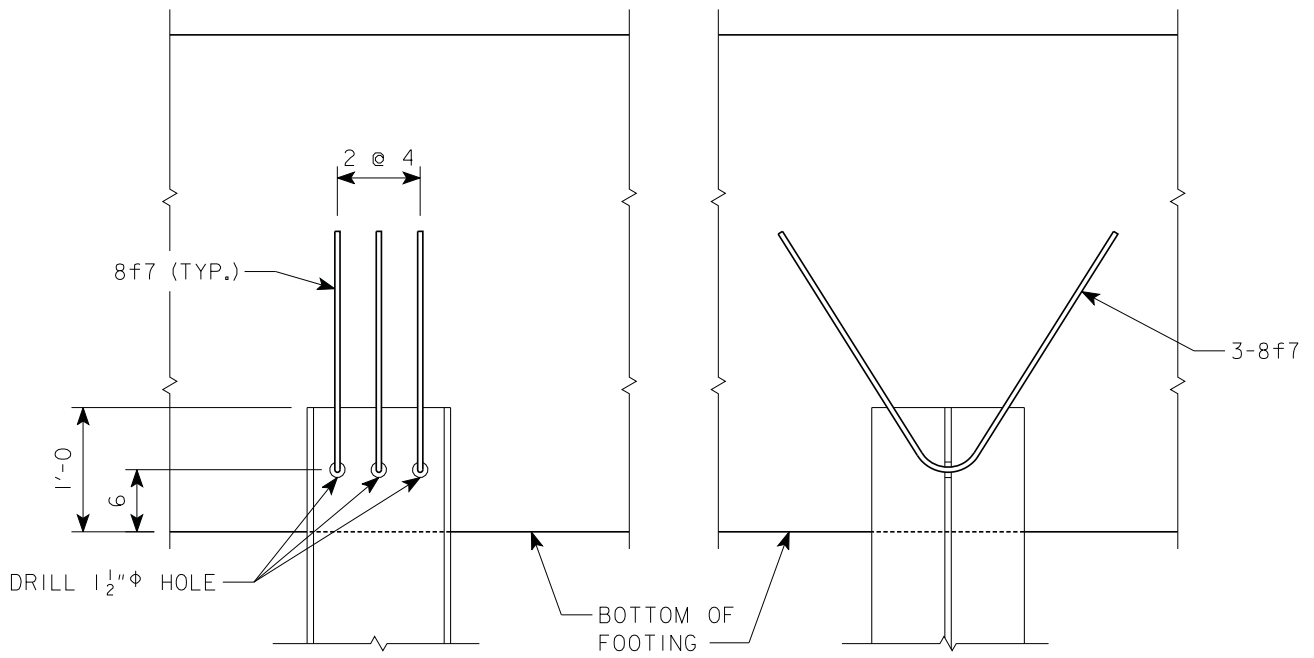
Replace Detail I and Section G-G with Pile Uplift Anchor Detail at Abutments

Sheet No. 51:

Replace Detail I and Section G-G with Pile Uplift Anchor Detail at Abutments

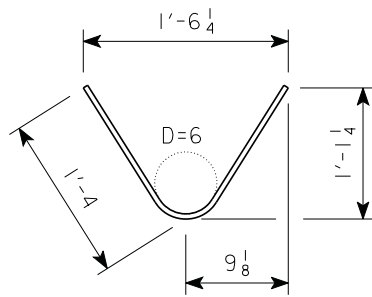
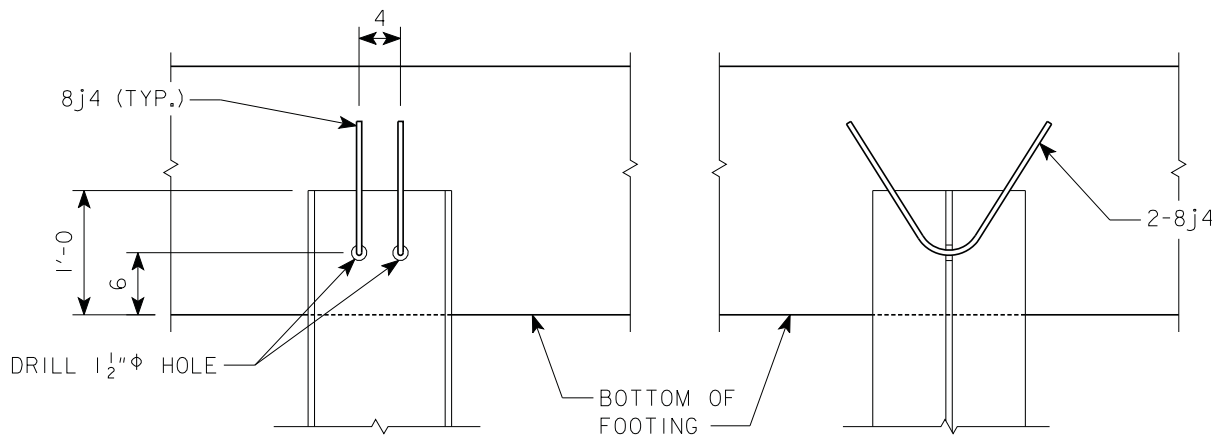
Sheet No. 54:

Replace 4 – 8j3 bars with 4 – 8j4 bars and quantity changes from 24lb. to 29lb. Reinforcing Steel, Epoxy Coated – Total at each Abutment changes from 9421 lb. to 9426 lb. *Reinforcing Steel, Epoxy Coated Total at each Abutment changes from 9479 lb. to 9484 lb. * Reinforcing Steel, Epoxy Coated Total for both Abutments changes from 18,958 lb. to 18,968 lb.



8f7

PILE UPLIFT ANCHOR DETAIL AT PIERS



8j4

PILE UPLIFT ANCHOR DETAIL AT ABUTMENTS