

A d d e n d u m

Iowa Department of Transportation
Office of Contracts

Date of Letting: April 17, 2012
Date of Addendum: April 12, 2012

B.O.	Proposal ID	Proposal Work Type	County	Project Number	Addendum
00A	78-0293-080-M	BRIDGE NEW - STEEL GIRDER	POTTAWATTAMIE	IM-NHS-029-3(80)52--03-78 IM-NHS-029-3(81)52--03-78 IM-NHS-029-3(86)52--03-78 IM-NHS-029-3(87)52--03-78 IM-NHS-029-3(94)52--03-78 IM-NHS-029-3(95)52--03-78	17APR00A.A02

Notice: Only the bid proposal holders receive this addendum and responsibility for notifying any potential subcontractors or suppliers remains with the proposal holder.

Make the following changes to the PROPOSAL SCHEDULE OF PRICES:

Change Line No. 0360 2404-7775000 REINFORCING STEEL from 510,081.000 LB to 508,739.000 LB.

Change Line No. 0370 2404-7775005 REINFORCING STEEL, EPOXY COATED from 1,000,400.000 LB to 1,000,410.000 LB.

Change Line No. 0640 2102-0425070 SPECIAL BACKFILL from 39,023.600 TON to 39,840.6 TON.

Change Line No. 0720 2111-8174100 GRANULAR SUBBASE from 58,974.000 SY to 55,266.000 SY.

Change Line No. 0740 2115-0100000 MODIFIED SUBBASE from 8,845.000 CY to 9,463.000 CY.

Change Line No. 0790 2301-1004120 STANDARD OR SLIP-FORM PORTLAND CEMENT CONCRETE PAVEMENT, QM-C, CLASS 3I DURABILITY, 12 IN. from 45,560.400 SY to 44,042.400 SY.

Change Line No. 0810 2301-9090000 QUALITY MANAGEMENT - CONCRETE (QM-C) from 15,186.800 CY to 14,680.800 CY.

Change Line No. 0820 2304-0100000 DETOUR PAVEMENT from 6,318.900 SY to 7,614.900 SY.

Change Line No. 1160 2505-4008400 STEEL BEAM GUARDRAIL BARRIER
TRANSITION SECTION from 7.000 EACH to 2.000 EACH.

For Line No. 1770 change the Item Number, Item Description and Item Quantity and
Unit from 2111-8174100 GRANULAR SUBBASE 7,600.100 SY to 2115-0100000
MODIFIED SUBBASE 1,266.700 CY.

If the quantities are not changed on the proposal form, the bid amounts will be extended using
the unit price times the correct quantities as shown here.

Make the following changes to plan IM-NHS-029-3(81)52--03-78:

Sheet No. 2:

Item No. 5 – Reinforcing Steel Quantity changes from 510081 to 508739
Item No. 6 – Reinforcing Steel, Epoxy Coated Quantity changes from 1000400 to
1000410

Sheet No. 15:

Replace Detail C and Section E-E with Pile Uplift Anchor Detail at Piers.
Replace 24 - 9f6 bars with 36 – 8f7 bars and quantity changes from 490 lb. – 481
lb.Reinforcing Steel – Totals change from 38,724 to 38,715

Sheet No. 18:

Replace Detail C and Section E-E with Pile Uplift Anchor Detail at Piers Replace
24 - 9f6 bars with 36 – 8f7 bars and quantity changes from 530 lb. – 481 lb.
Reinforcing Steel – Totals change from 45,883 to 45,834

Sheet No. 21:

Replace Detail C and Section E-E with Pile Uplift Anchor Detail at Piers.
Replace 48 - 9f6 bars with 72 – 8f7 bars and quantity changes from 1387 lb. – 961
lb. Reinforcing Steel – Totals change from 98,622 to 98,196

Sheet No. 24:

Replace Detail C and Section E-E with Pile Uplift Anchor Detail at Piers.
Replace 24 - 9f6 bars with 36 – 8f7 bars and quantity changes from 530 lb. – 481
lb. Reinforcing Steel – Totals change from 27,029 to 26,980

Sheet No. 27:

Replace Detail C and Section E-E with Pile Uplift Anchor Detail at Piers.
Replace 24 - 9f6 bars with 36 – 8f7 bars and quantity changes from 571 lb. – 481
lb. Reinforcing Steel – Totals change from 28,911 to 28,821

Sheet No. 30:

Replace Detail C and Section E-E with Pile Uplift Anchor Detail at Piers.
Replace 32 - 9f6 bars with 48 – 8f7 bars and quantity changes from 707 lb. – 641 lb. Reinforcing Steel – Totals change from 14,342 to 14,276

Sheet No. 33:

Replace Detail C and Section E-E with Pile Uplift Anchor Detail at Piers.
Replace 24 - 9f6 bars with 36 – 8f7 bars and quantity changes from 530 lb. – 481 lb. Reinforcing Steel – Totals change from 44,555 to 44,506

Sheet No. 36:

Replace Detail C and Section E-E with Pile Uplift Anchor Detail at Piers.
Replace 24 - 9f6 bars with 36 – 8f7 bars and quantity changes from 530 lb. – 481 lb. Reinforcing Steel – Totals change from 76,580 to 76,531

Sheet No. 39:

Replace Detail C and Section E-E with Pile Uplift Anchor Detail at Piers.
Replace 56 - 9f6 bars with 84 – 8f7 bars and quantity changes from 1618 lb. – 1121 lb. Reinforcing Steel – Totals change from 49,637 to 49,140

Sheet No. 42:

Replace Detail C and Section E-E with Pile Uplift Anchor Detail at Piers.
Replace 24 - 9f6 bars with 36 – 8f7 bars and quantity changes from 530 lb. – 481 lb. Reinforcing Steel – Totals change from 48,195 to 48,146

Sheet No. 45:

Replace Detail C and Section E-E with Pile Uplift Anchor Detail at Piers.
Replace 24 - 9f6 bars with 36 – 8f7 bars and quantity changes from 490 lb. – 481 lb. Reinforcing Steel – Totals change from 37,603 to 37,594

Sheet No. 48:

Replace Detail I and Section G-G with Pile Uplift Anchor Detail at Abutments

Sheet No. 51:

Replace Detail I and Section G-G with Pile Uplift Anchor Detail at Abutments

Sheet No. 54:

Replace 4 – 8j3 bars with 4 – 8j4 bars and quantity changes from 24lb. to 29lb. Reinforcing Steel, Epoxy Coated – Total at each Abutment changes from 9421 lb. to 9426 lb. *Reinforcing Steel, Epoxy Coated Total at each Abutment changes from 9479 lb. to 9484 lb. * Reinforcing Steel, Epoxy Coated Total for both Abutments changes from 18,958 lb. to 18,968 lb.

Make the following changes to plan IM-NHS-029-3(86)52--03-78:

Plan Sheet B.5:

For Typical I-80 EB to I-29 NB Ramp H - Grade & Pave, change 6" Granular Subbase to 6" Modified Subbase.

Plan Sheet B.12:

Change pavement width from 14' to 16'

Plan Sheet B.13:

Replace plan sheet B.13 with attached plan sheet B.13

Plan Sheet C.1:

For Item Code 2102-0425070 in the Description, change Mainline Interstate 29 Southbound quantity from 18,502.6 Tons to 19,319.6 Tons.

Plan Sheet C.2:

For Item Code 2301-1004120 in the Description, change Long Term Detour Pavement from 16,683.5 SY to 15,165.5 SY.

For Item Code 2304-0100000 add the following to the Description:

Detour pavement was designed utilizing 12" PCC. 15" HMA may be placed as an alternative to 12" PCC.

Includes 1,276.0 SY for shoulder strengthening.

Plan Sheet C.12:

Replace plan sheet C.12 with attached plan sheet C.12

Make the following changes to plan IM-NHS-029-3(87)52--03-78:

Plan Sheet B.1:

For Typical Ramp H - Grade & Pave, change 6" Granular Subbase to 6" Modified Subbase.

Plan Sheet B.2:

For Typical DET295, change 6" Granular Subbase to 6" Modified Subbase.

Plan Sheet C.2:

For Item Code 2304-0100000 add the following Description:

Detour pavement was designed with 12" PCC. 15" HMA may be placed as an alternative to 12" PCC.

Plan Sheet C.5, Tabulation 105-4:
Replace BA-205 Dated 10-18-11
with BA-206 Dated 10-18-11

Plan Sheet C.7, Tabulation 108-8A:
Delete entries in BA-205 column
For Location Station No.'s 1 and 2, Add entries of '1' in BA-206 column

Make the following change to plan IM-NHS-029-3(94)52--03-78:

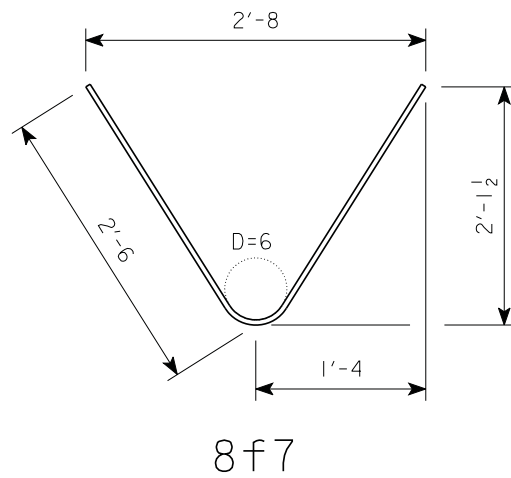
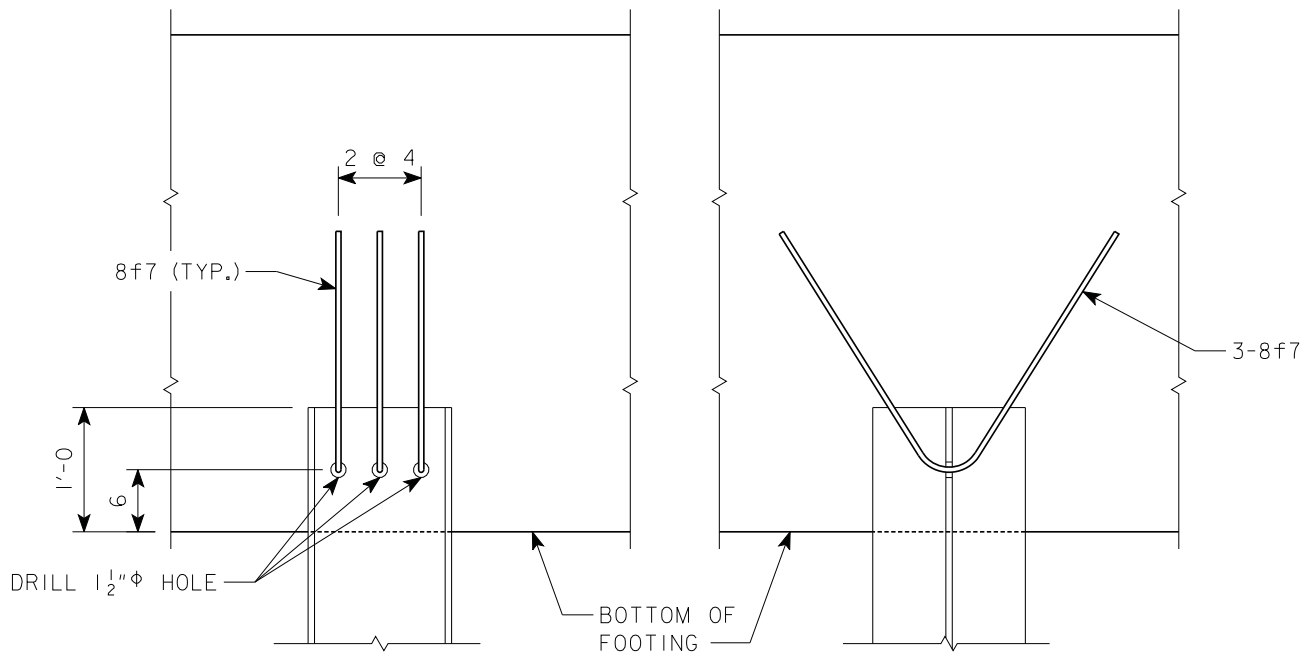
Add the following Sign Truss Standards:

SOST-01-11 09/11
SOST-03-11 09/11
SOST-06-11 09/11
SOST-08-11 09/11
SOST-09-11 09/11
SOST-11-11 09/11
SOST-13-11 09/11

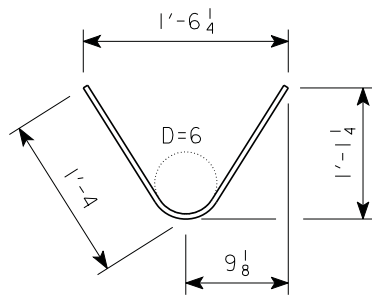
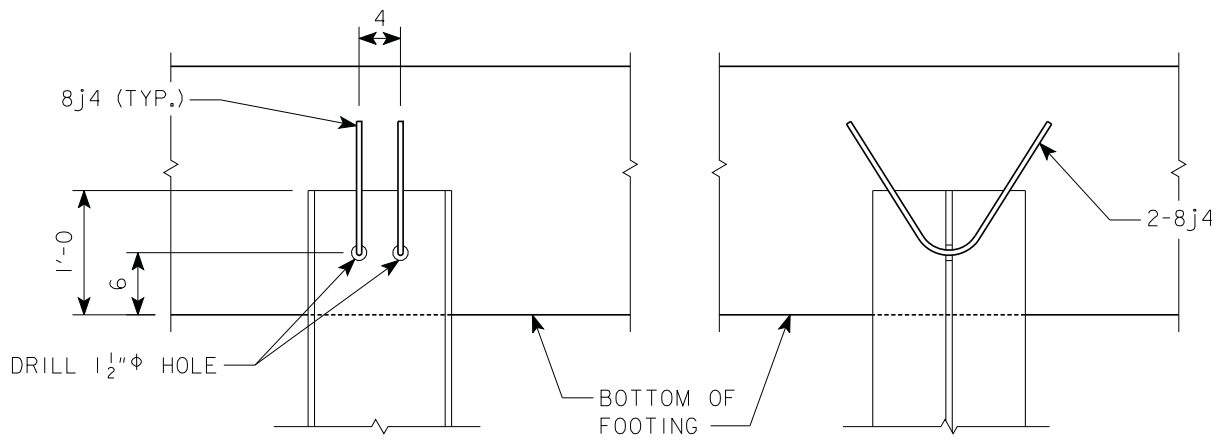
Plan Sheet N.7:
Replace plan sheet N.7 with attached plan sheet N.7

Make the following change to plan IM-NHS-029-3(95)52--03-78:

Plan Sheet C.02:
Replace Tabulation 108-1 with attached Tabulation 108-1



PILE UPLIFT ANCHOR DETAIL AT PIERS



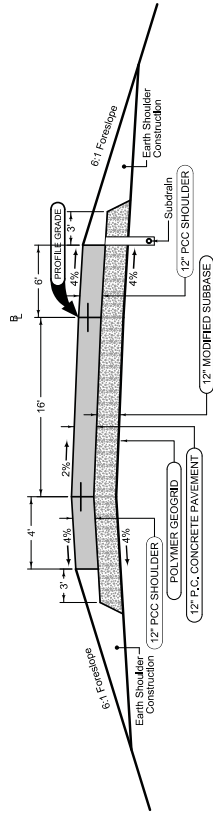
8j4

PILE UPLIFT ANCHOR DETAIL AT ABUTMENTS

Full Depth PCC Shoulder

Shoulder Jointing:
 Longitudinal joint: L-2 or KT-2
 Transverse joints: C at 20' spacing

Direction of Travel	BEGIN STATION	END STATION
	9299+00.00	9315+18.29



BEGIN STATION	END STATION
9299+00.00	9315+18.29

Section shown in the direction of traffic.
 Ramp Jointing:
 Transverse joints: CD at 20' spacing.

Full Depth PCC Shoulder

Shoulder Jointing:
 Longitudinal joint: L-2 or KT-2
 Transverse joints: C at 20' spacing

Direction of Travel	BEGIN STATION	END STATION
	9299+00.00	9315+18.29

See Tab 100-24 for pavement quantities.
 See Tab 112-9 for shoulder quantities.

DETOUR 299

ENGLISH | 4/9/2012 | 2:16:18 PM | zabramas

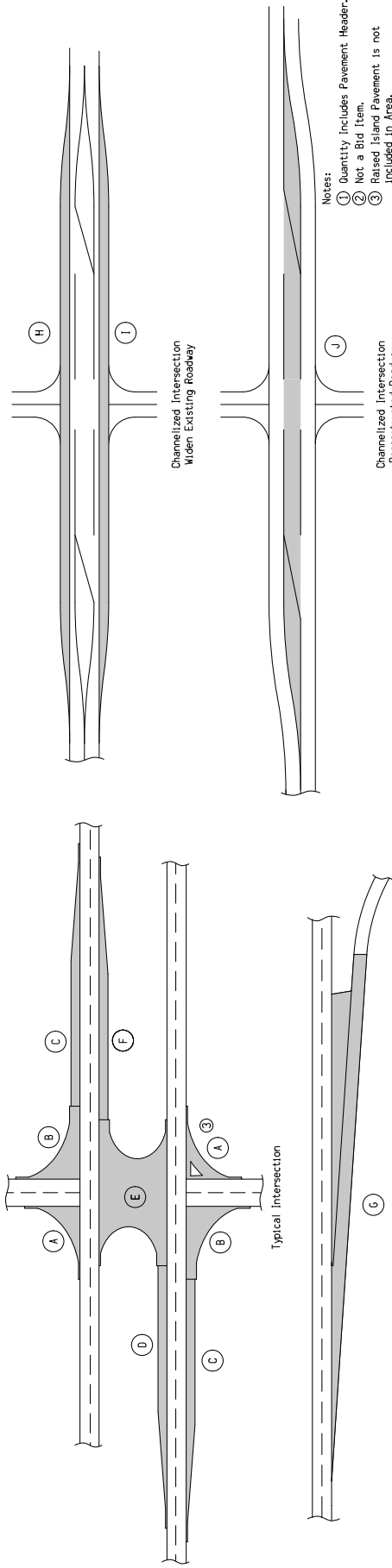
DESIGN TEAM: Skogerboe, Schoenrock & Abrams

COUNTY: POTTAWATTAMIE | PROJECT NUMBER: IM-NHS-29-3(86)52-03-78

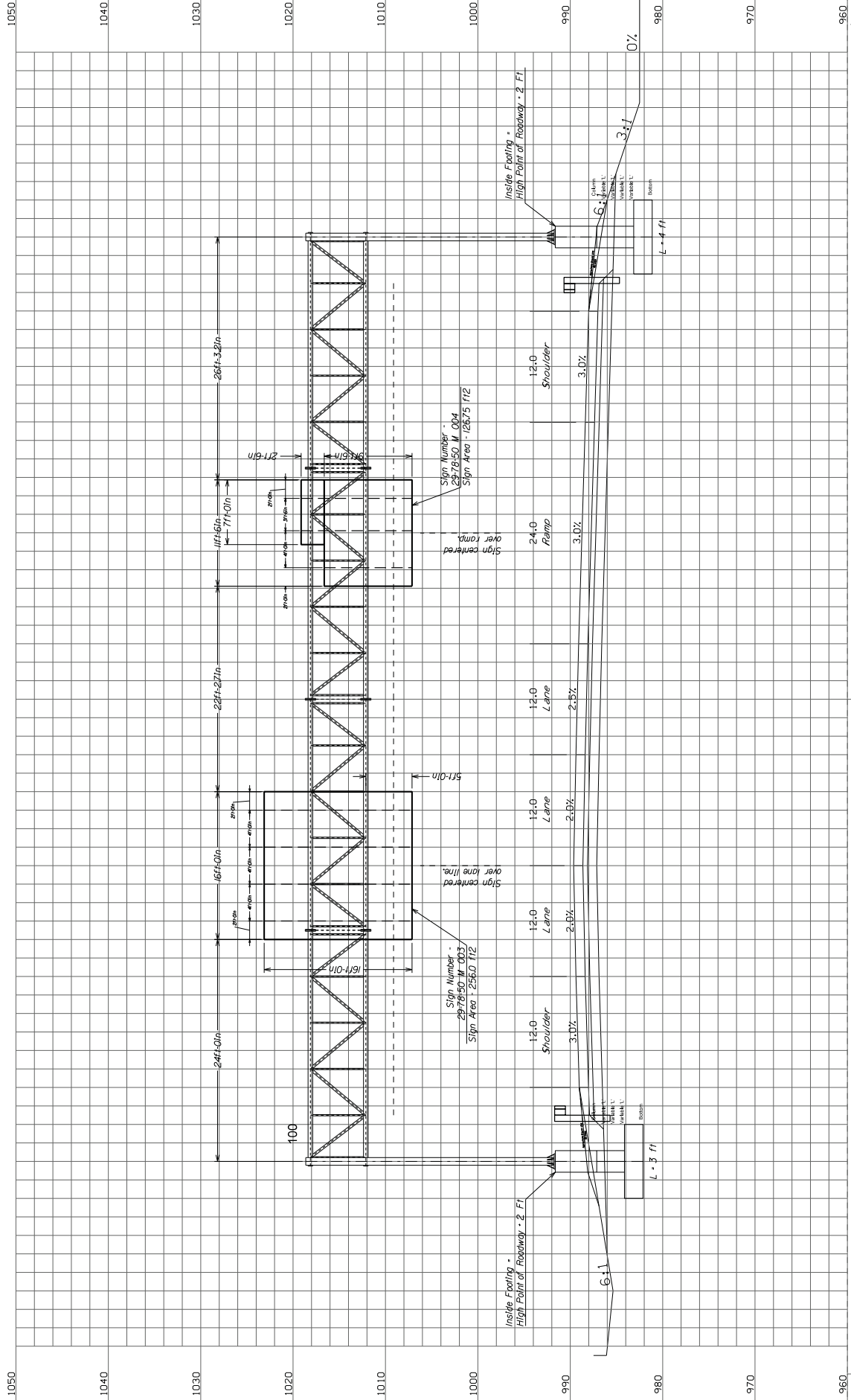
SHEET NUMBER: B.13

DETOUR 299

TABULATION OF PAVEMENT



Road Identification	Location		Length Ft.	Area Sq. Yds.	Area 1										Island Information		Subbase Sq. Yds.	Remarks
	Station to	Station			A	B	C	D	E	F	G	H	I	J	Island Sq. Yds.	Curb 2 Ft.		
DETOUR PAVEMENT																		
DET 203	207+73.4	211+74.3	1081.2														465	PAVED AND REMOVED
DET 204	205+13.0	220+08.9	3848.3														2183	PAVED AND REMOVED
DET 257			154.7															PAVED AND REMOVED
DET 280	26+465.7	272+56.5	1234.7															PAVED AND REMOVED
W029S	9469+85.00	9489+05.60	1296															SHOULDER STRENGTHENING
			7614.9															
LONG TERM DETOUR PAVEMENT																		
DET 206	220+76.0	247+19.6	5196.3															POSSIBLE LONG TERM
DET 292	277+46.8	289+60.0	5410.3															POSSIBLE LONG TERM
DET 293	303+02.9	314+03.7	1674.3															POSSIBLE LONG TERM
DET 299	9299+00.0	9316+18.3	2884.6															POSSIBLE LONG TERM
			15,185.5															
PERM. PAVEMENT																		
W029S	9485+60.0	9493+20.0	660.0	4326.9														6599
W029S	9516+34.1	9548+21.2	3197.1	1767.5														29276
W029B	3252+50.0	3259+42.8	1892.8	4514.0														2106
W029E	35505+07.6	35512+30.0	723.4	3399.0														5098
W029H	37506+40.0	37516+50.0	1010.0	1795.6														3708
24TH ST. B	42548+20.0	42558+09.7	989.7	3053.9														1334
			28,876.9															



1050
1040
1030
1020
1010
1000
990
980
970
960

100
20
30
40
50
60
70
80
90
100

1050
1040
1030
1020
1010
1000
990
980
970
960

9484+50
I-29 - Southbound
Proposed 100' Sign Truss

SIGN INSTALLATION DETAILS

TABULATION OF LIGHTING INSTALLATIONS

108-1

2-11-00

① RM-39 and RM-47

LOCATION		RM-31			FOOTING TYPE ①	REMARKS
NO.	STATION	TYPE	A	E		
R301	7405+91	1	6	9	RM-39	
R302	37507+45	1	6	9	RM-39	
R303	37509+00	1	6	9	RM-39	
W13	7413+71 LT116					
W11	7419+47 LT269					
W12	7413+14 RT179					
W10	7419+48 RT256					
W8	7422+16 RT276					
W7	7432+24 LT343					
W9	7426+74 LT258					
W4	7439+85 RT164					
W5	7433+95 RT216					
E501	42545+26	1	6	9	RM-47	
E502	42546+96	1	6	9	RM-47	
E503	42548+62	1	6	9	RM-47	
E504	42550+32	1	6	9	RM-47	
E505	42552+02	1	6	9	RM-47	
E506	42553+72	1	6	9	RM-47	
E507	42555+42	1	6	9	RM-47	
E508	42557+12	1	6	9	RM-47	
W19	1569+10 RT21					
W18	1574+91 RT60					
W17	9493+94 RT78					
W15	9499+17 RT111					
W2	7453+66 RT220					
W14	8502+15 LT257					