



## CATTLE ON FEED INVENTORY UP

**Cattle and calves on feed** for slaughter market in Iowa for all feedlots totaled 1.31 million head on December 1, 2011, according to the *Cattle on Feed* report released by USDA, National Agricultural Statistics Service. The inventory was up 11 percent from November 1, 2011 and up 2 percent from December 1, 2010. Feedlots with a capacity greater than 1,000 head had 610,000 head on feed, up 7 percent from last month but down 3 percent from last year. Feedlots with a capacity less than 1,000 head had 700,000 head on feed, up 15 percent from last month and up 7 percent from last year.

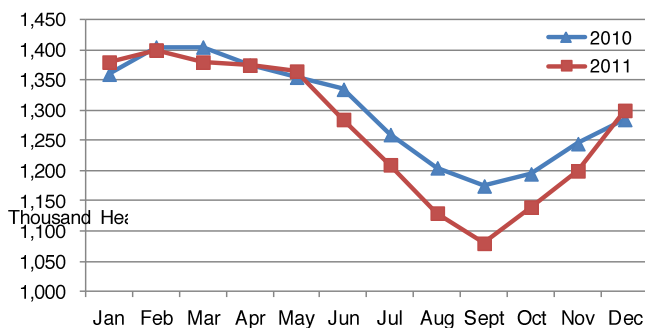
**Placements** during November totaled 318,000 head, an increase of 19 percent from last month and up 39 percent from last year. Feedlots with a capacity greater than 1,000 head placed 138,000 head, up 9 percent from last month and up 21 percent from last year. Feedlots with a capacity less than 1,000 head placed 180,000 head. This is up 29 percent from last month and up 57 percent from last year.

**Marketings** for November were 180,000 head, down 19 percent from last month but unchanged from last year. Feedlots with a capacity greater than 1,000 head marketed 95,000 head, down 24 percent from last month but up 6 percent from last year. Feedlots with a capacity less than 1,000 head marketed 85,000 head, down 13 percent from last month and down 6 percent from last year. **Other disappearance** totaled 8,000 head.

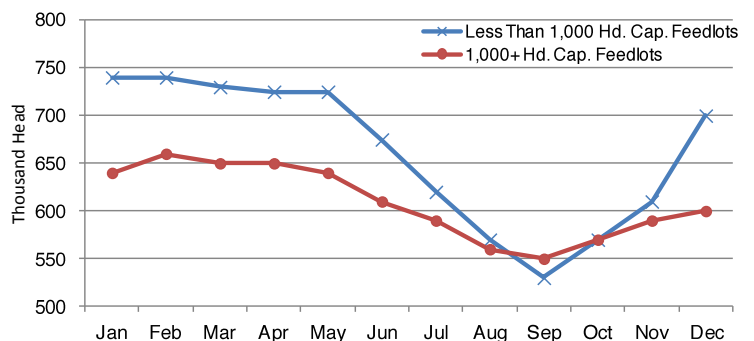
### All Cattle on Feed, Iowa

Item	Lots 1,000+ Head	Lots Less than 1,000 Head	All Lots
	(1,000 Head)	(1,000 Head)	(1,000 Head)
Cattle on Feed, November 1, 2011 .....	570	610	1,180
November Placements .....	138	180	318
November Marketings .....	95	85	180
November Other Disappearance .....	3	5	8
Cattle on Feed, December 1, 2011 .....	610	700	1,310

**Cattle on Feed, Inventory on all Feedlots, Iowa: 2010-2011**



**Cattle on Feed, Inventory by Feedlot Capacity, Iowa: 2011**



## Cattle on Feed: Number on Feed, Placements, Marketings, and Other Disappearance by Month, 1,000+ Capacity Feedlots

[Cattle and calves on feed are animals for slaughter market being fed a ration of grain or other concentrates and are expected to produce a carcass that will grade select or better.]

State	Cattle on Feed December 1			Placements during November			Marketings during November			November Disappearance other than Slaughter <sup>1</sup>		
	2010	2011	'11 as % of '10	2010	2011	'11 as % of '10	2010	2011	'11 as % of '10	2010	2011	'11 as % of '10
	(1,000 Head)	(1,000 Head)	(Percent)	(1,000 Head)	(1,000 Head)	(Percent)	(1,000 Head)	(1,000 Head)	(Percent)	(1,000 Head)	(1,000 Head)	(Percent)
Arizona .....	249	291	117	22	27	123	23	27	117	1	1	100
California .....	470	510	109	69	68	99	55	48	87	4	5	125
Colorado .....	1,090	1,160	106	155	175	113	150	145	97	5	10	200
Idaho .....	235	235	100	52	46	88	35	35	100	2	1	50
<b>Iowa .....</b>	<b>630</b>	<b>610</b>	<b>97</b>	<b>114</b>	<b>138</b>	<b>121</b>	<b>90</b>	<b>95</b>	<b>106</b>	<b>4</b>	<b>3</b>	<b>75</b>
Kansas .....	2,360	2,360	100	375	375	100	400	395	99	15	20	133
Nebraska .....	2,460	2,560	104	445	480	108	395	375	95	10	15	150
Oklahoma .....	380	385	101	60	60	100	63	61	97	2	4	200
South Dakota ..	255	265	104	62	70	113	36	41	114	1	4	400
Texas .....	2,840	3,010	106	475	475	100	440	450	102	15	35	233
Washington ...	214	236	110	54	54	100	36	43	119	1	1	100
Other States ..	437	459	105	76	71	93	51	55	108	2	3	150
United States ..	11,620	12,081	104	1,959	2,039	104	1,774	1,770	100	62	102	165

<sup>1</sup>Includes death loss, movement from feedlots to pasture, and shipments to other feedlots for further feeding.

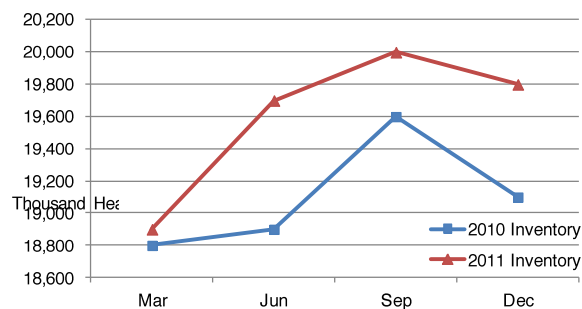
## HOGS AND PIGS INVENTORY UP FROM LAST YEAR

Iowa inventory of all hogs & pigs on December 1 was 19.8 million, according to the *Quarterly Hogs and Pigs* report released by USDA, National Agricultural Statistics Service. This was down 1 percent from the 20.0 million in September 2011, but up 700,000 head from December 2010.

The **September-November 2011 pig crop** was 4.99 million head. A total of 480,000 sows farrowed with an average litter size of 10.4 pigs per sow.

As of December 1, producers planned to farrow 475,000 head of sows and gilts in the December 2011 – February 2012 quarter. Farrowing intentions for the March - May 2012 period were estimated at 480,000 as of December 1, 2011.

Iowa Quarterly Hog Inventory



## Hogs and Pigs: Breeding, Market, and Total Inventory By Selected States and United States, December 1, 2010-2011

[Data may not add to totals due to rounding.]

State	Breeding			Market			Total		
	2010	2011	'11 as % of '10	2010	2011	'11 as % of '10	2010	2011	'11 as % of '10
	(1,000 Head)	(1,000 Head)	(Percent)	(1,000 Head)	(1,000 Head)	(Percent)	(1,000 Head)	(1,000 Head)	(Percent)
Illinois .....	480	480	100	3,920	4,120	105	4,400	4,600	105
<b>Iowa .....</b>	<b>1,020</b>	<b>1,010</b>	<b>99</b>	<b>18,080</b>	<b>18,790</b>	<b>104</b>	<b>19,100</b>	<b>19,800</b>	<b>104</b>
Minnesota .....	560	560	100	7,140	7,240	101	7,700	7,800	101
Missouri .....	355	355	100	2,545	2,395	94	2,900	2,750	95
Nebraska .....	375	385	103	2,775	2,765	100	3,150	3,150	100
North Carolina .....	840	850	101	8,160	7,950	97	9,000	8,800	98
United States .....	5,778	5,803	100	59,147	60,128	102	64,925	65,931	102

## Market Hogs and Pigs: Inventory Number by Weight Group, Selected States, and United States, December 1, 2010-2011

[Data may not add to totals due to rounding.]

State	Under 50 lbs.		50-119 lbs.		120-179 lbs.		180 lbs. and over	
	2010	2011	2010	2011	2010	2011	2010	2011
	(1,000 Head)	(1,000 Head)	(1,000 Head)	(1,000 Head)	(1,000 Head)	(1,000 Head)	(1,000 Head)	(1,000 Head)
Illinois .....	1,280	1,270	1,180	1,350	730	750	730	750
Iowa .....	4,600	5,000	5,600	5,850	4,330	4,540	3,550	3,400
Minnesota .....	2,430	2,450	2,160	2,180	1,380	1,440	1,170	1,170
Missouri .....	1,065	980	605	560	410	415	465	440
Nebraska .....	910	880	830	820	595	595	440	470
North Carolina .....	2,950	3,000	1,970	1,920	1,660	1,560	1,580	1,470
United States .....	18,864	19,271	16,519	16,895	12,233	12,472	11,531	11,490

## MONTHLY PRICES

Preliminary December prices received in Iowa for corn, oats, and soybeans decreased from November prices. According to the USDA, NASS, Iowa Field Office, corn prices dropped \$0.34, oat prices dropped \$0.26, and soybean prices dropped \$0.70 from November.

All hay prices increased \$3.00 to \$135.00, but alfalfa hay prices decreased \$1.00 to \$142.00.

### Average Crop Prices Received by Farmers, Iowa

Item	IOWA		
	Dec 2010	Nov 2011	Dec <sup>1</sup> 2011
	-----Dollars-----		
Corn ..... Bu	4.86	5.74	5.40
Oats ..... Bu	3.61	3.71	3.45
Soybeans ..... Bu	11.60	11.60	10.90
Alfalfa, baled ..... Ton	115.00	143.00	142.00
All Hay, baled ..... Ton	102.00	132.00	135.00

<sup>1</sup> Preliminary

### Prices Received Index Summary, United States

Prices Received	Dec 2010	Nov 2011	Dec <sup>1</sup> 2011	Dec 2010	Nov 2011	Dec <sup>1</sup> 2011
	1910-14=100			1990-92=100		
All Products .....	968	1167	1115	153	184	176
Crops .....	842	1020	947	170	206	191
Feed Grains & Hay ...	721	902	847	202	253	238
Oilseeds .....	1092	1179	1130	199	215	206
Lvstk .....	1026	1202	1209	134	157	158
Meat Animals .....	1295	1611	1607	127	158	158
Dairy Prod. ....	1028	1255	1218	128	156	152

<sup>1</sup> Preliminary

### Average Prices Received by Farmers, United States

Item	Dec 2010	Nov 2011	Dec <sup>1</sup> 2011
	-----Dollars-----		
Corn ..... Bu	4.82	5.84	5.44
Oats ..... Bu	2.94	3.36	3.31
Soybeans ..... Bu	11.60	11.70	11.10
Alfalfa, bales ..... Ton	121.00	198.00	199.00
All Hay, baled ..... Ton	111.00	176.00	177.00
Hogs, all ..... Cwt	52.30	64.40	64.00
Sows ..... Cwt	48.60	60.80	56.70
Brw & Gilts ..... Cwt	52.70	64.50	64.30
Beef Cattle ..... Cwt	98.10	120.00	121.00
Cows ..... Cwt	55.10	66.00	69.00
Strs & Hfrs ..... Cwt	104.00	126.00	128.00
Calves ..... Cwt	130.00	153.00	158.00
Milk Cows <sup>2</sup> ..... Hd	(NA)	(NA)	(NA)
Milk (whls) ..... Cwt	16.70	20.40	19.80
Eggs (mkt) <sup>3</sup> ..... Doz	0.919	0.862	1.100

NA = Information not available.

<sup>1</sup> Preliminary <sup>2</sup> Prices published January, April, July, and October.

<sup>3</sup> Eggs are mid-month prices.

### Prices Paid Index Summary, United States

Prices Paid	Dec 2010	Nov 2011	Dec <sup>1</sup> 2011	Dec 2010	Nov 2011	Dec <sup>1</sup> 2011
	1910-14=100			1990-92=100		
Prices Paid <sup>1</sup> .....	2522	2740	2736	189	206	205
Feed .....	974	1090	1077	200	223	221
Lvstk/Poultry ..	1811	2099	2132	142	164	167
Fertilizer .....	1049	1269	1281	286	346	350
Chemicals .....	887	909	899	144	147	145
Fuels .....	2387	2822	2754	309	366	357
Ratio <sup>2</sup> .....	(NA)	(NA)	(NA)	81	89	86
Parity Ratio <sup>3</sup> ..	38	43	41	(NA)	(NA)	(NA)

NA = Information not available.

<sup>1</sup> Prices paid by farmers for commodities and services, interest, taxes, and farm wage rates. <sup>2</sup> Received/Paid <sup>3</sup> Ratio of index of prices received to index of prices paid for commodities and services, interest, taxes, and farm wage rates.

## Milk Cows and Production: Selected States, November 2010 and 2011

State	Milk Cows <sup>1</sup>		Milk Per Cow <sup>2</sup>		Milk Production <sup>2</sup>		
	2010	2011	2010	2011	2010	2011	Change from 2010
	(1,000 Head)	(1,000 Head)	(Pounds)	(Pounds)	(Million Pounds)	(Million Pounds)	(Percent)
Illinois .....	98	98	1,550	1,580	152	155	2.0
Indiana .....	171	172	1,650	1,680	281	289	2.8
Iowa .....	<b>204</b>	<b>200</b>	<b>1,700</b>	<b>1,765</b>	<b>347</b>	<b>353</b>	<b>1.7</b>
Kansas .....	121	124	1,730	1,735	209	215	2.9
Michigan .....	360	369	1,840	1,865	662	688	3.9
Minnesota .....	470	471	1,525	1,520	717	716	-0.1
Missouri .....	96	94	1,180	1,190	113	112	-0.9
Ohio .....	270	269	1,560	1,560	421	420	-0.2
Wisconsin .....	1,265	1,265	1,630	1,655	2,062	2,094	1.6
23-State Total <sup>3</sup> .....	8,373	8,481	1,722	1,738	14,421	14,736	2.2

<sup>1</sup> Includes dry cows, excludes heifers not yet fresh. <sup>2</sup> Excludes milk sucked by calves. <sup>3</sup> As of February 2009, the 23 States are Arizona, California, Colorado, Florida, Idaho, Illinois, Indiana, Iowa, Kansas, Michigan, Minnesota, Missouri, New Mexico, New York, Ohio, Oregon, Pennsylvania, Texas, Utah, Vermont, Virginia, Washington, and Wisconsin.

## All Layers and Egg Production: Selected States, November 2010 and 2011

[Data may not add to totals due to rounding. Data by type of flock not shown for some states to avoid disclosing individual operations, data included in United States totals.]

State	Table egg layers in flocks 30,000 & above		All layers on hand		Eggs per 100 layers		Total egg production		Table egg production	
	2010	2011	2010	2011	2010	2011	2010	2011	2010	2011
	(Thousands)	(Thousands)	(Thousands)	(Thousands)	(Number)	(Number)	(Million eggs)	(Million eggs)	(Million eggs)	(Million eggs)
Indiana .....	22,387	22,120	23,101	22,778	2,277	2,243	526	511	515	500
Iowa .....	<b>51,745</b>	<b>52,256</b>	<b>52,632</b>	<b>53,193</b>	<b>2,210</b>	<b>2,241</b>	<b>1,163</b>	<b>1,192</b>	<b>1,150</b>	<b>1,176</b>
Minnesota .....	10,071	9,554	10,556	10,046	2,311	2,289	244	230	236	222
Nebraska .....	9,367	9,013	9,417	9,063	2,421	2,450	228	222	228	222
North Carolina .....	5,858	5,753	13,208	12,665	2,029	1,982	268	251	141	129
Ohio .....	27,853	27,510	28,318	27,998	2,267	2,304	642	645	(D)	(D)
United States .....	278,154	280,391	339,447	337,885	2,231	2,253	7,573	7,614	6,538	6,615

(D) Withheld to avoid disclosing data for individual operations.