

A d d e n d u m

Iowa Department of Transportation
Office of Contracts

Date of Letting: December 20, 2011
Date of Addendum: December 13, 2011

B.O.	Proposal ID	Proposal Work Type	County	Project Number	Addendum
007	37-0042-038	BRIDGE NEW - PPCB	GREENE	HDP-004-2(38)--71-37	20DEC007.A02

Notice: Only the bid proposal holders receive this addendum and responsibility for notifying any potential subcontractors or suppliers remains with the proposal holder.

Make the following change to the PROPOSAL SCHEDULE OF PRICES:

Change Line No. 0490 2301-1033100 STANDARD OR SLIP FORM PORTLAND CEMENT CONCRETE PAVEMENT, CLASS C, CLASS 3 DURABILITY, 10 IN. from 6,590.000 SY to 5,872.000 SY.

Change Line No. 0550 2412-0000100 LONGITUDINAL GROOVING IN CONCRETE from 6,269.000 SY to 6,197.000 SY.

If the quantities are not changed on the proposal form, the bid amounts will be extended using the unit price times the correct quantities as shown here.

Make the following change to the Proposal Special Provisions List and the Proposal Special Provisions Text:

Delete the following Special Provisions:

DS-09002 October 20, 2009

DEVELOPMENTAL SPECIFICATIONS FOR COLORED SEALER
COATING FOR STRUCTURAL CONCRETE

Make the following changes to the plan:

The following is to eliminate conflicting information in the plan:

CONCRETE RAILS SHALL BE CAST IN PLACE AND NOT SLIP FORMED

Sheet Number 3:

Delete the middle column, first paragraph:

~~“THE CONTRACTOR SHALL FURNISH THE CONSTRUCTION SURVEY NECESSARY FOR SURVEYS INVOLVED IN CONSTRUCTION OF ALL WORK AS INDICATED BY PROJECT PLANS. THESE SURVEYS SHALL INCLUDE SETTING ALL NECESSARY STAKES AND REFERENCE POINTS TO PROVIDE CORRECT VERTICAL AND HORIZONTAL ALIGNMENT AND ELEVATIONS FOR ALL PARTS OF THE STRUCTURE AS SHOWN ON THE PLANS. THE METHODS OF DETERMINING SUBSTRUCTURE LAYOUTS, ALIGNMENTS, AND ALL ELEVATIONS SHALL BE SUBJECT TO REVIEW AND APPROVAL BY THE ENGINEER, BUT THE APPROVAL SHALL NOT ACT TO RELIEVE THE CONTRACTOR OF THE RESPONSIBILITY FOR THE CORRECTNESS THEREOF.”~~

Add the following note:

"LONGITUDINAL GROOVING WILL BE PROVIDED ON THE BRIDGE, HOWEVER THE QUANTITY IS INCLUDED IN THE ROADWAY QUANTITIES SHOWN ELSEWHERE IN THESE PLANS."

Sheet Number 23:

Estimated Quantities table, change Steel HP from 12x53 to 10x53.

Sheet Number 64:

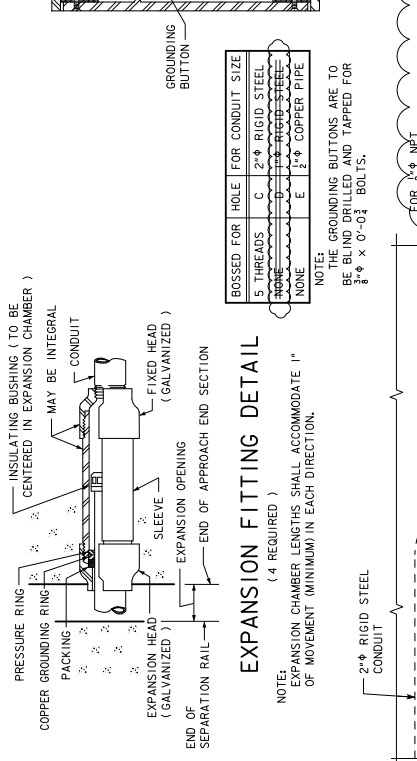
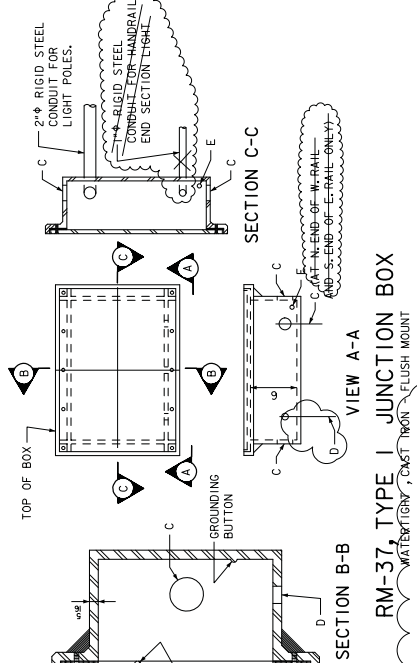
Replace Sheet Number 64 with the attached Sheet Number 64.

Sheets B.02 & B.03, Typicals 2209A, 2209B and 2212:

Change P.C. Concrete Pavement thickness from 7 Inches to 8 Inches.

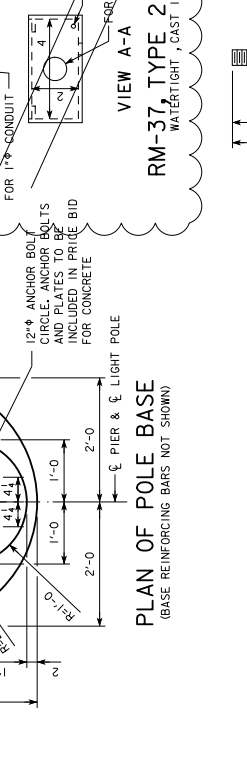
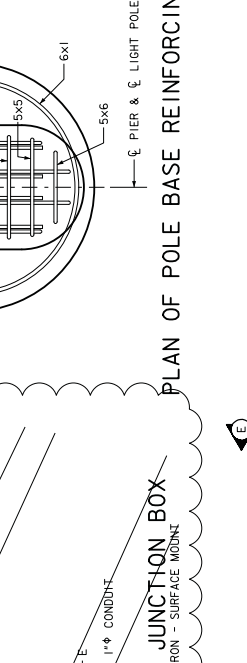
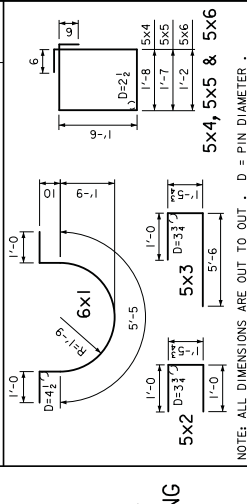
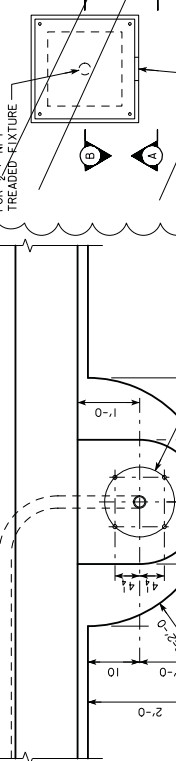
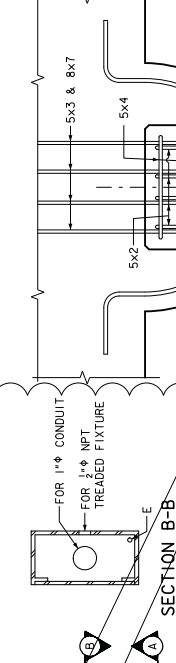
LIGHTING NOTES:

SEE RM-37 STANDARD ROAD PLAN FOR ADDITIONAL INFORMATION ON JUNCTION BOXES.
 CONSTRUCTION SHALL CONFORM TO THE CURRENT IOWA D.O.T. STANDARD AND SUPPLEMENTAL SPECIFICATIONS AND SPECIAL PROVISIONS. ELECTRICAL DUCTS SECTION 252.01 SHALL COMPLY WITH THE ARTICLE "ELECTRICAL DUCTS".
 ALL "C" ENTRANCE HOLES IN JUNCTION BOXES SHALL BE DRILLED AND TAPPED FOR THE SPECIFIED CONDUIT SIZE. ALL OTHER HOLES SHALL HAVE A CONCRETE - TIGHT SLIP FIT. CONDUIT ENDS SHALL NOT PROTRUDE INTO INSIDE SURFACE OF BOX. FOR TYPE 1, DRAIN PIPE END SHALL BE FLUSH WITH APPROXIMATE 3" FROM THE INSIDE SURFACE OF THE BOX WALL AND NOT FOR DRAIN PIPE SHALL BE PLACED IN THE LOW CORNER OF THE BOX WITH A MINIMUM CLEARANCE OF 1" BETWEEN THE EDGE OF THE HOLE AND THE INSIDE SURFACE OF THE BOX WALL. TYPICAL DETAILS ARE SHOWN ON THIS SHEET.
 THE RIGID STEEL CONDUIT, JUNCTION BOXES AND FITTINGS INCLUDING LABOR AND ANY ADDITIONAL WORK TO DO THE INSTALLATION IS CONSIDERED INCIDENTAL TO THE COST OF THE RAILING.
 SUPPLEMENTAL WEIGHT FOR CONCRETE AND REINFORCING STEEL IS INCLUDED IN THE COST OF FURNISHING AND INSTALLING POLES, LIGHTS AND LIGHTING EXPANSION IS NOT A PART OF THIS CONTRACT.
 EXPANSION FITTING SHALL BE AS SPECIFIED OR AS APPROVED BY THE ENGINEER. TYPICAL DETAILS ARE SHOWN ON THIS SHEET.
 ALL ANCHOR BOLT MATERIAL SHALL COMPLY WITH THE REQUIREMENTS OF IOWA DOT MATERIALS I.M. 453.08.
 ALL REINFORCING STEEL IS TO BE EPOXY COATED AND GRADE 60.



EPOXY REINFORCING STEEL-ONE BASE

BAR	LOCATION	SHAPE NO.	LENGTH	WEIGHT
6X1	SLAB ANCHORS	2	9'-1"	27
5X2	POLE BASE TO SLAB	4	3'-6"	15
5X3	POLE BASE TO SLAB	4	8'-0"	33
5X4	POLE BASE HOOP	2	7'-4"	15
5X5	POLE BASE HOOP	2	7'-2"	7
5X6	POLE BASE HOOP	1	6'-4"	7
8X7	SLAB TRANSVERSE	4	5'-8"	61
TOTAL WEIGHT (LB)				165

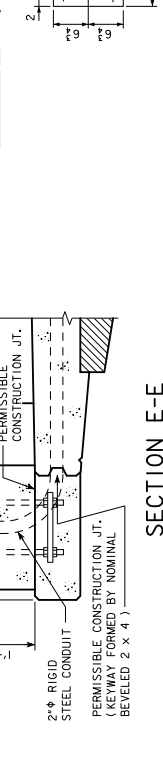
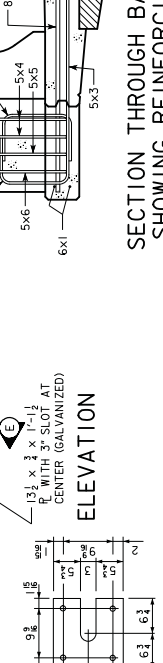
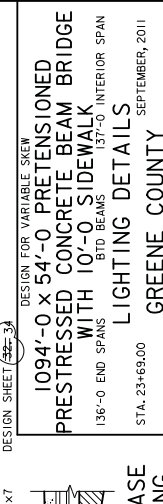
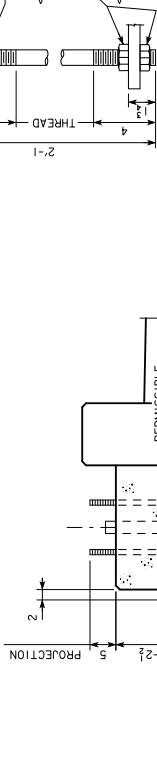
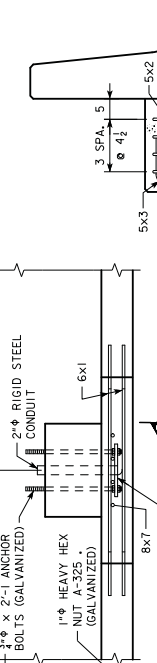
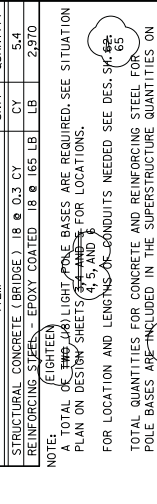


LIGHTING QUANTITIES

ITEM	UNIT	QUANTITY
STRUCTURAL CONCRETE (BRIDGE) 18 @ 0.3 CY	CY	5.4
REINFORCING STEEL - EPOXY COATED 18 @ 165 LB	LB	2,970

NOTE: ALL DIMENSIONS ARE OUT TO OUT. D = PIN DIAMETER.
 NOTE: (EIGHTEEN)
 A TOTAL OF 18 LIGHT POLE BASES ARE REQUIRED. SEE SITUATION PLAN ON DESIGN SHEETS 252-1 AND 252-2 FOR LOCATIONS.
 FOR LOCATION AND LENGTHS OF CONDUITS NEEDED SEE DES. SHEETS 65

TOTAL QUANTITIES FOR CONCRETE AND REINFORCING STEEL FOR POLE BASES ARE INCLUDED IN THE SUPERSTRUCTURE QUANTITIES ON DESIGN SHEET 252-3
 DESIGN FOR VARIABLE SKEW
 1094'-0 x 54'-0 PRETENSIONED
 PRESTRESSED CONCRETE BEAM BRIDGE
 WITH 10'-0 SIDEWALK
 136'-0 END SPANS
 137'-0 INTERIOR SPAN



REVISIONS
 12/12/2011
 SBI N:2006-Projects\138068\Cadd\B\Final\37004038.rpt
 4:30:57 PM
 DESIGN TEAM: SLICKERTON
 PROJECT NUMBER: HDP-004-2108A-71-37
 GREENE COUNTY
 SHEET NUMBER: 64

REVISIONS
 12/12/2011
 SBI N:2006-Projects\138068\Cadd\B\Final\37004038.rpt
 4:30:57 PM
 DESIGN TEAM: SLICKERTON
 PROJECT NUMBER: HDP-004-2108A-71-37
 GREENE COUNTY
 SHEET NUMBER: 64

REVISIONS
 12/12/2011
 SBI N:2006-Projects\138068\Cadd\B\Final\37004038.rpt
 4:30:57 PM
 DESIGN TEAM: SLICKERTON
 PROJECT NUMBER: HDP-004-2108A-71-37
 GREENE COUNTY
 SHEET NUMBER: 64