

# A d d e n d u m

Iowa Department of Transportation  
Office of Contracts

Date of Letting: November 15, 2011  
Date of Addendum: October 28, 2011

<b>B.O.</b>	<b>Proposal ID</b>	<b>Proposal Work Type</b>	<b>County</b>	<b>Project Number</b>	<b>Addendum</b>
006	83-C083-048	BRIDGE REPLACEMENT - PPCB	SHELBY	BRS-C083(48)--60-83	15NOV006.A01

---

Notice: Only the bid proposal holders receive this addendum and responsibility for notifying any potential subcontractors or suppliers remains with the proposal holder.

---

Make the following changes to the PROPOSAL DETAILS, Page 2:

CHANGE the CONTRACT PERIOD as follows:

Late Start Date from 06/11/12 to 04/16/12  
Working Days from 100 DAYS to 120 DAYS

Make the following change to the PROPOSAL SCHEDULE OF PRICES:

Change Line No. 0120 2408-7800000 STRUCTURAL STEEL from 4,377.000 LB to 11,106.000 LB.

Change Line No. 0150 2501-0201253 PILES, STEEL, HP 12 X 53 from 2.000 LF to 2,492.000 LF.

If the quantity is not changed on the proposal form, the bid amount will be extended using the unit price times the correct quantity as shown here.

Make the following changes to the Proposal Special Provisions List and the Proposal Special Provisions Text:

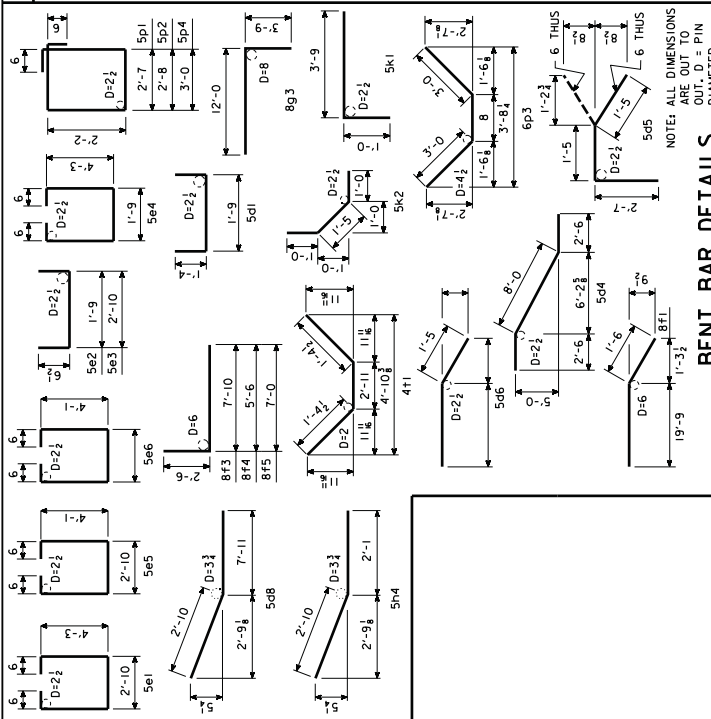
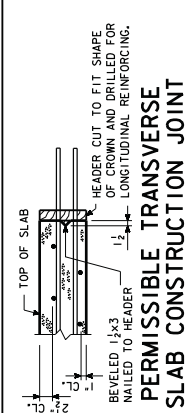
Delete the following:  
500.01

Add the following:  
500.07.2011 \*\*\* WINTER WORK \*\*\*

Winter work will be allowed during the winter of 2011/2012.  
No working days will be charged between November 15, 2011 and April 1, 2012.

Make the following change to the plan:

Replace plan sheet numbers 17 and 20 with the attached plan sheet numbers 17 and 20.



**BENT BAR DETAILS**

**CONC. PLACEMENT QUANTITIES**

LOCATION	ONE SUPER & TWO ABUTS.	QUANTITY
SECTION 1, SLAB & ABUT-DIAPH.	92.1	
SECTION 2, SLAB	83.2	
SECTION 3, SLAB & ABUT-DIAPH.	92.1	
SECTION 4, SLAB & PIER DIAPH.	43.3	
SECTION 5, SLAB & PIER DIAPH.	43.3	

**ESTIMATED QUANTITIES**

ITEM	UNIT	QUANTITY
STRUCTURAL CONCRETE (BRIDGE)	CU. YD.	402.4
PRECAST CONCRETE (PIERS)	CU. YD.	402.4
REINFORCING STEEL EPOXY COATED	LBS.	4377
REINFORCING STEEL	LBS.	10,347
PRESTRESSED CONCRETE BEAMS	EACH	8
CONCRETE BEAMS	EACH	4
CLASS 20 EXCAVATION (PIERS, APPROACH, ABUT.)	CU. YD.	1030
CLASS 10 CHANNEL EXCAVATION	CU. YD.	2039
PILES: HP10X42 (12 @ 70'-0" SO. & 12 @ 77'-0" NO.)	L.F.	1764
STRUCTURAL STEEL (BEARING)	LBS.	5664

TOTAL (CU. YDS.) 402.4

**REINFORCING**

BAR	LOCATION	SHAPE	NO.	LENGTH	WEIGHT
601	SLAB TRANSV. TOP & BOTT.	32'-10"	31267		
602	SLAB TRANSV. TOP ENDS	38	VARIABLES	925	
603	SLAB TRANSV. BOTT. ENDS	38	VARIABLES	973	
5b1	SLAB LONGIT. TOP & BOTT.	565	35'-11"	21915	
5b2	SLAB LONGIT. TOP & BOTT. @ PIERS	122	29'-8"	9664	
5d1	PIER DIAPH. ENDS	12	4'-5"	56	
5d2	PIER & ABUT-DIAPH. LONGIT.	54	6'-3"	521	
5d3	PIER & ABUT-DIAPH. LONGIT.	18	6'-11"	180	
5d4	PIER DIAPH. ENDS	12	5'-9"	72	
5d5	PIER DIAPH. LONGIT. B.F.	16	19'-10"	131	
5d6	PIER DIAPH. LONGIT.	8	20'-0"	167	
5d7	PAVING NOTCH LONGIT.	24	11'-0"	276	
5d8	ABUT-DIAPH. WING EXT. LONGIT.	24	11'-0"	276	
5e1	PIER DIAPH. HOOPS	21	12'-4"	271	
5e2	PIER DIAPH. TIES ENDS	4	2'-10"	12	
5e3	PIER DIAPH. TIES	43	4'-5"	199	
5e4	PIER DIAPH. HOOPS ENDS	2	11'-3"	24	
5e5	PIER DIAPH. HOOPS EXPANSION PIER	21	12'-0"	263	
5e6	PIER DIAPH. HOOPS EXPAN. PIER ENDS	2	10'-11"	23	
8f1	ABUT. FOOTING LONGIT. BOTH F.	36	21'-3"	2043	
8f3	ABUT. EXTENSION LONGIT.	16	10'-6"	449	
8f4	ABUT. EXTENSION LONGIT.	8	8'-0"	171	
8f5	ABUT. EXTENSION LONGIT.	8	9'-6"	203	
8g1	ABUT. VERT. BOTH F.	118	7'-10"	2468	
8g3	ABUT. DIAPH. VERT. B.F.	58	15'-9"	2440	
8g4	ABUT. DIAPH. VERT. VERT.	40	6'-2"	370	
5h1	ABUT. TO WING HORIZ.	56	6'-8"	389	
5h2	ABUT. TO WING ANCHOR	12	4'-8"	59	
5h4	ABUT. TO WING ANCHOR	12	4'-8"	59	
5j1	TOP OF SLAB TRANSV. (AT RAIL)	664	6'-3"	6234	
5k1	PAVING NOTCH	118	4'-9"	585	
5k2	PAVING NOTCH	118	3'-5"	421	
5p1	ABUT. HOOPS	16	10'-6"	1371	
5p2	ABUT. EXTENSION HOOPS	12	10'-9"	154	
5p3	ABUT. BOTT. PILES	40	6'-8"	401	
5p4	ABUT. HOOPS AT ENDS	4	11'-4"	48	
4t1	UNDER BEAMS AT ABUTMENTS	8	6'-0"	32	
18254	BARRIER RAIL & ABUT. WING - SEE DESIGN SHI. NO. 25-26				
18254	REINFORCING STEEL EPOXY COATED - TOTAL (LBS.)	103477			
18254	SPIRAL SPACERS, 1/4" x 1/4" x 0.70	72	1'-10"	56	
	REINFORCING STEEL - TOTAL (LBS.)	197			

**304 - 0 X 30' - 0 PRETENSIONED  
PRESTRESSED CONCRETE BEAM BRIDGE**  
(BTC BEAMS)  
122' - 0 INTERIOR SPAN

**SUPERSTRUCTURE DETAILS**

STA. 14+28.00  
SHELBY COUNTY  
SHEET 3 OF 4

30' SHELBY  
BRS-C083(48)-60-83

PROJECT NUMBER: BRS-C083(48)-60-83  
SHEET NUMBER 17

**ESTIMATED QUANTITIES**

ITEM	UNIT	QUANTITY
STRUCTURAL CONCRETE (BRIDGE)	CU. YD.	402.4
PRECAST CONCRETE (PIERS)	CU. YD.	402.4
REINFORCING STEEL EPOXY COATED	LBS.	4377
REINFORCING STEEL	LBS.	10,347
PRESTRESSED CONCRETE BEAMS	EACH	8
CONCRETE BEAMS	EACH	4
CLASS 20 EXCAVATION (PIERS, APPROACH, ABUT.)	CU. YD.	1030
CLASS 10 CHANNEL EXCAVATION	CU. YD.	2039
PILES: HP10X42 (12 @ 70'-0" SO. & 12 @ 77'-0" NO.)	L.F.	1764
STRUCTURAL STEEL (BEARING)	LBS.	5664

**CONC. PLACEMENT QUANTITIES**

LOCATION	ONE SUPER & TWO ABUTS.	QUANTITY
SECTION 1, SLAB & ABUT-DIAPH.	92.1	
SECTION 2, SLAB	83.2	
SECTION 3, SLAB & ABUT-DIAPH.	92.1	
SECTION 4, SLAB & PIER DIAPH.	43.3	
SECTION 5, SLAB & PIER DIAPH.	43.3	

**ESTIMATED QUANTITIES**

ITEM	UNIT	QUANTITY
STRUCTURAL CONCRETE (BRIDGE)	CU. YD.	402.4
PRECAST CONCRETE (PIERS)	CU. YD.	402.4
REINFORCING STEEL EPOXY COATED	LBS.	4377
REINFORCING STEEL	LBS.	10,347
PRESTRESSED CONCRETE BEAMS	EACH	8
CONCRETE BEAMS	EACH	4
CLASS 20 EXCAVATION (PIERS, APPROACH, ABUT.)	CU. YD.	1030
CLASS 10 CHANNEL EXCAVATION	CU. YD.	2039
PILES: HP10X42 (12 @ 70'-0" SO. & 12 @ 77'-0" NO.)	L.F.	1764
STRUCTURAL STEEL (BEARING)	LBS.	5664

REVISED: 10-28-11

JEO

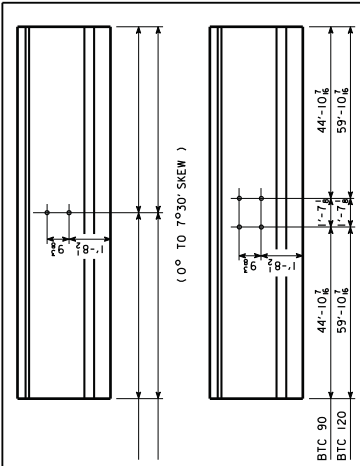
Engineering Architecture Surveying Planning

CADD FILE: P:\Engineering\110685.00 - Shelby County Bridge Design\Drawings\110685-SHEET 19-26.dgn

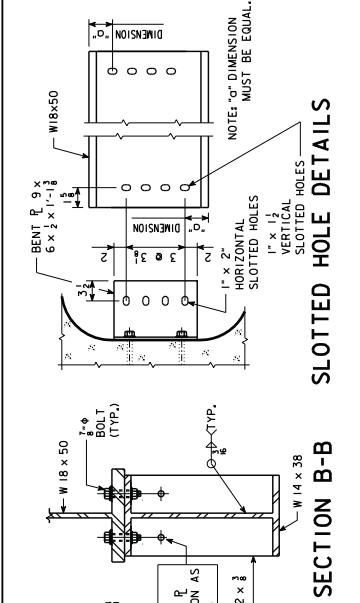
SHELBY COUNTY

PROJECT NUMBER: BRS-C083(48)-60-83

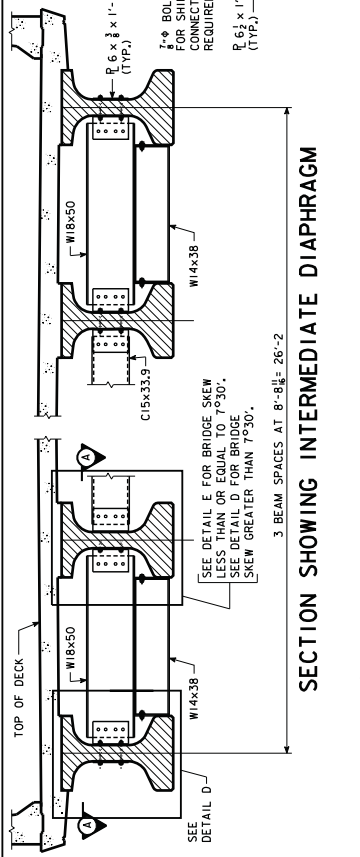
SHEET NUMBER 17



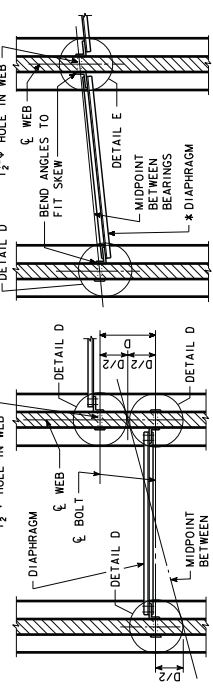
**INTERMEDIATE DIAPHRAGM BOLT HOLE LOCATIONS**



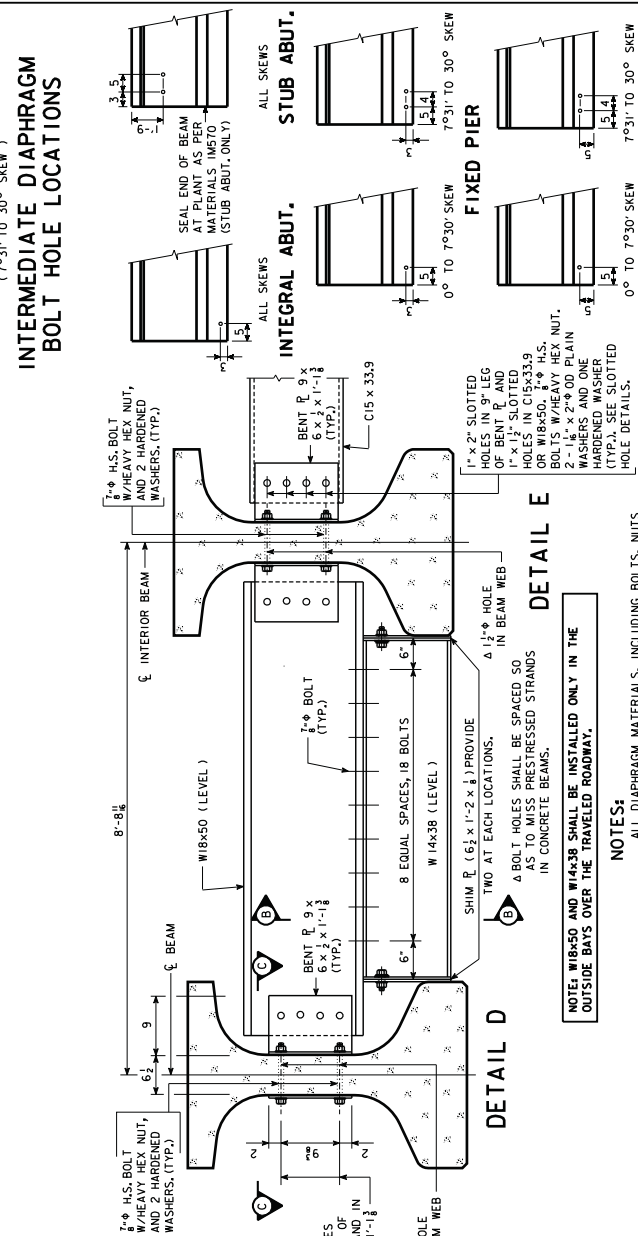
**SECTION B-B SLOTTED HOLE DETAILS**



**SECTION SHOWING INTERMEDIATE DIAPHRAGM**



**PART SECTION A-A**  
FOR BRIDGES SKEWED LESS THAN 7°30'  
\* NOTE: THE W14x38 WILL REQUIRE BEVELED ENDS TO MATCH THE SKEW.



**DETAIL E**

NOTE: W18x50 AND W14x38 SHALL BE INSTALLED ONLY IN THE OUTSIDE BAYS OVER THE TRAVELED ROADWAY.

**NOTES:**

ALL DIAPHRAGM MATERIALS, INCLUDING BOLTS, NUTS AND WASHERS SHALL BE GALVANIZED.  
SHOP DRAWINGS OF THE DIAPHRAGMS SHOWING LAYOUT AND DETAILS OF THE DIAPHRAGMS SHALL BE SUBMITTED FOR APPROVAL.  
INTERMEDIATE DIAPHRAGM SHALL BE INCLUDED IN THE PRICE BID FOR STRUCTURAL STEEL.  
THE 1 1/2" HOLES FOR THE 7/8" H.S. BOLTS SHALL BE CAST INTO THE WEB. DRILLING IS NOT ALLOWED.  
THE 7/8" H.S. BOLTS THROUGH THE WEB SHALL HAVE A THREAD LENGTH OF 3" MIN. AND 4" MAX. AND SHALL MEET THE REQUIREMENTS OF ASTM A449.  
ALL BOLTS ARE TO BE TIGHTENED PRIOR TO PLACING CONCRETE.  
BOLTS IN DIAPHRAGMS LOCATED UNDER LONGITUDINAL BRIDGE FLOOR CONSTRUCTION JOINTS SHALL NOT BE TIGHTENED UNTIL STAGE TWO OF THE BRIDGE FLOOR HAS BEEN PLACED.

ONE BEAM CONNECTION (DETAIL "D" AND/OR DETAIL "E")	NO. OF BEAM CONNECTIONS	WEIGHT
2 - 1" x 3/4" H.S. BOLTS WITH NUTS & WASHERS = 4.8 LBS.	18	87
ONE DETAIL "D"		
1 - BACKING 1/2" x 6" x 8" x 1'-1 1/2" = 6.5 LBS.	18	153
1 - BENT 1/2" x 6" x 3/4" x 1'-1 1/2" = 28.5 LBS.	18	513
<b>ONE DIAPHRAGM</b>	<b>NUMBER OF DIAPHRAGMS</b>	
8 - 1" x 2" x 2 1/2" H.S. BOLTS WITH NUTS & WASHERS = 10.3 LBS.	9	93
18 - 1" x 2" x 2 1/2" H.S. BOLTS WITH NUTS & WASHERS = 19.5 LBS.	3	58
4 - 1" x 2" x 2 1/2" H.S. BOLTS WITH NUTS & WASHERS = 4.0 LBS.	3	12
2 - 1" x 2" x 2 1/2" x 3/8" = 19.3 LBS.	3	58
4 - 1" x 2" x 2 1/2" x 3/8" = 12.9 LBS.	3	39
	<b>LENGTH OF MEMBER</b>	
1 - W18 x 50 = 50 LBS/FT	7'-6"	437
1 - C15 x 33.9 = 33.9 LBS/FT	7'-6"	262
1 - W14 x 38 = 38 LBS/FT	6'-1 1/2"	100
INTERMEDIATE DIAPHRAGM STRUCTURAL STEEL - TOTAL (LBS)		4377

REVISED: 10-26-11



ENGLISH

Planning

Structuring

Architectures

Engineering

Shelby County

CADD FILE: P:\Engineering\110685.00 - Shelby County Bridge Design\Drawings\110685-SHEET P-26.dgn

SHELBY COUNTY

PROJECT NUMBER: BRS-C083(48)-60-83

SHEET NUMBER 20

STA. 14+28.00

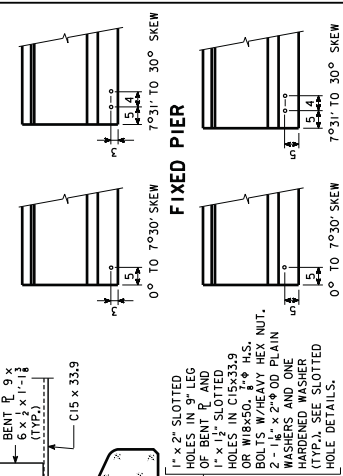
SHELBY COUNTY

BRS-C083(48)-60-83

30° SKEW/LA

**304 - 0 X 30' - 0 PRETENSIONED PRESTRESSED CONCRETE BEAM BRIDGE**  
(BTC BEAMS)  
90' - 0 END SPANS  
122' - 0 INTERIOR SPAN

**EXPANSION PIER BEAM COIL TIE LOCATIONS**



**INTEGRAL ABUT. STUB ABUT. FIXED PIER EXPANSION PIER**

**DETAIL D**

NOTE: W18x50 AND W14x38 SHALL BE INSTALLED ONLY IN THE OUTSIDE BAYS OVER THE TRAVELED ROADWAY.

ALL DIAPHRAGM MATERIALS, INCLUDING BOLTS, NUTS AND WASHERS SHALL BE GALVANIZED.

SHOP DRAWINGS OF THE DIAPHRAGMS SHOWING LAYOUT AND DETAILS OF THE DIAPHRAGMS SHALL BE SUBMITTED FOR APPROVAL.

INTERMEDIATE DIAPHRAGM SHALL BE INCLUDED IN THE PRICE BID FOR STRUCTURAL STEEL.

THE 1 1/2" HOLES FOR THE 7/8" H.S. BOLTS SHALL BE CAST INTO THE WEB. DRILLING IS NOT ALLOWED.

THE 7/8" H.S. BOLTS THROUGH THE WEB SHALL HAVE A THREAD LENGTH OF 3" MIN. AND 4" MAX. AND SHALL MEET THE REQUIREMENTS OF ASTM A449.

ALL BOLTS ARE TO BE TIGHTENED PRIOR TO PLACING CONCRETE.

BOLTS IN DIAPHRAGMS LOCATED UNDER LONGITUDINAL BRIDGE FLOOR CONSTRUCTION JOINTS SHALL NOT BE TIGHTENED UNTIL STAGE TWO OF THE BRIDGE FLOOR HAS BEEN PLACED.