

Iowa Department  
of Human Services  
Charles M. Palmer, Director

**Report Series F-1**  
*Administrative Use Only*

**Food Assistance Program - State Summary**  
July, 2011

				% of Change Over
	<u>July, 2011</u>	<u>June, 2011</u>	<u>July, 2010</u>	<u>Last Year</u>
<b>*Households</b>				
FIP Program	17,203	17,176	17,491	-1.6%
Food Assistance Only	58,790	58,249	52,115	12.8%
Other Programs	104,022	103,402	91,543	13.6%
Total Households	180,015	178,827	161,149	11.7%
<b>*Recipients</b>				
FIP Program	53,162	52,869	54,164	-1.8%
Food Assistance Only	72,176	71,155	64,406	12.1%
Other Programs	263,635	262,129	231,039	14.1%
Total Recipients	388,973	386,153	349,609	11.3%
<b>*Allotments</b>				
FIP Program	\$7,569,426	\$7,501,357	\$7,765,061	-2.5%
Food Assistance Only	\$10,400,456	\$10,299,831	\$9,677,066	7.5%
Other Programs	\$30,506,768	\$30,287,371	\$27,854,633	9.5%
Total Allotments	\$48,476,650	\$48,088,559	\$45,296,760	7.0%
<b>*Average Allotment per Household</b>				
FIP Program	\$440.01	\$436.73	\$443.95	-0.9%
Food Assistance Only	\$176.91	\$176.82	\$185.69	-4.7%
Other Programs	\$293.27	\$292.91	\$304.28	-3.6%
Overall Average per Household	\$269.29	\$268.91	\$281.09	-4.2%
<b>*Average Allotment per Recipient</b>				
FIP Program	\$142.38	\$141.89	\$143.36	-0.7%
Food Assistance Only	\$144.10	\$144.75	\$150.25	-4.1%
Other Programs	\$115.72	\$115.54	\$120.56	-4.0%
Overall Average per Recipient	\$124.63	\$124.53	\$129.56	-3.8%

**State Fiscal Year to Date**

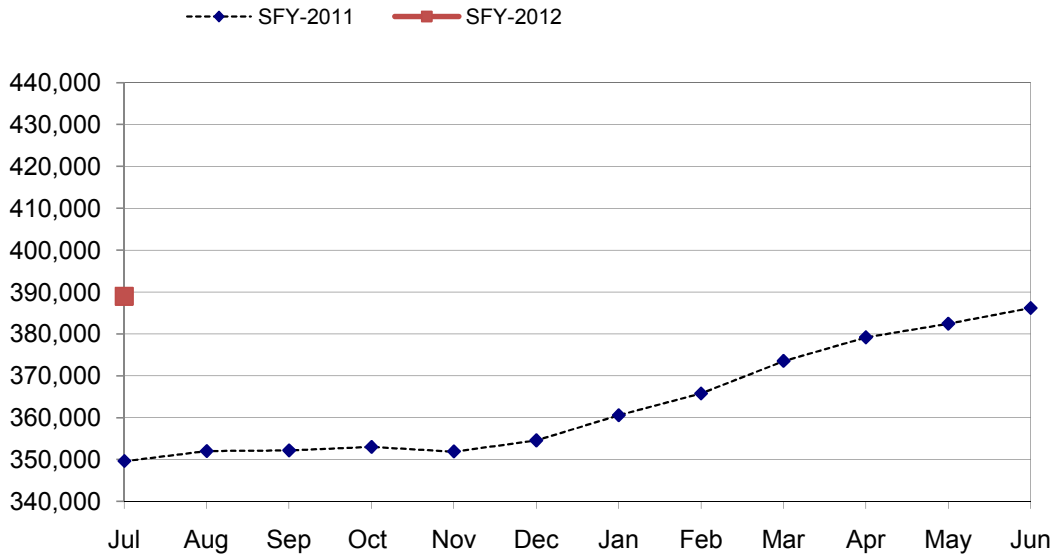
			% of Change over
	<u>SFY-2012</u>	<u>SFY-2011</u>	<u>Last Year</u>
<b>*Allotment</b>			
FIP Program	\$7,569,426	\$7,765,061	-2.52%
Food Assistance Only	\$10,400,456	\$9,677,066	7.48%
Other Programs	\$30,506,768	\$27,854,633	9.52%
Total Allotment	\$48,476,650	\$45,296,760	7.02%

\*All figures on the F-1 report (cases/individuals/expenditures) reflect only the Food Assistance Program.  
The categories of cases/individuals/expenditures are:  
FIP Program (receives food assistance and also receives assistance under the Family Investment Program)  
Food Assistance Only (receives food assistance and does not take part in either FIP or the Medicaid program)  
Other Programs (receives food assistance and takes part in the Medicaid program)

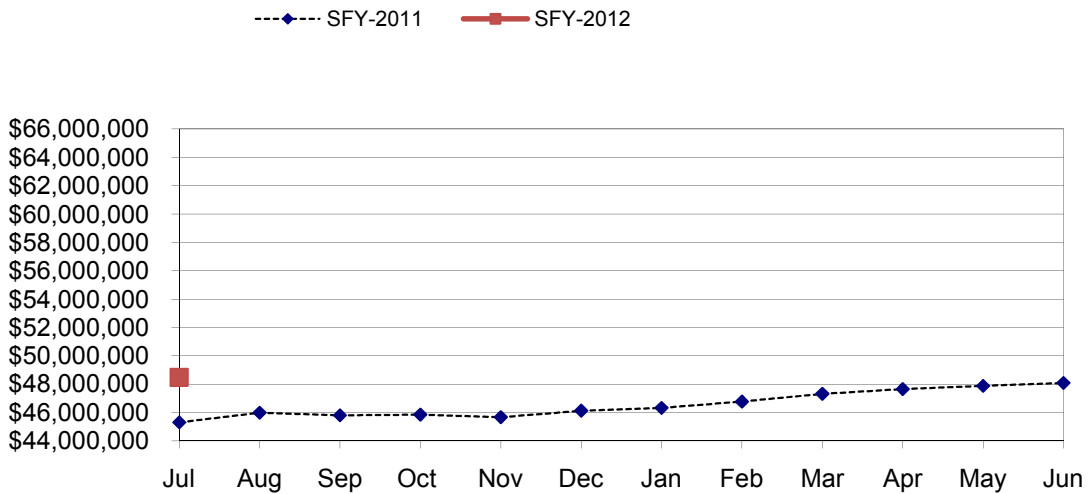
Prepared by:  
Jan Conrad  
Bureau of Planning and Research

Questions:  
Sandy Knudsen  
(515) 281-3093  
sknudse@dhs.state.ia.us

### Total Food Assistance Recipients



### Total Food Assistance Spending



**Food Stamp Participation by Case Type and County**

County	FIP Program			Food Assistance Only			Other Programs			TOTAL			PARTICIPATION RATE *
	Households	Recipients	Allotment	Households	Recipients	Allotment	Households	Recipients	Allotment	Households	Recipients	Allotment	
<b>Area 1 - Western</b>													
Audubon	16	48	6,917	49	65	8,804	142	382	42,951	207	495	58,672	32.2%
Buena Vista	106	345	48,829	167	205	28,136	677	1,978	216,136	950	2,528	293,101	52.0%
Carroll	65	213	27,870	211	273	40,016	541	1,279	138,799	817	1,765	206,685	42.5%
Cass	78	246	32,164	215	271	33,162	529	1,376	136,467	822	1,893	201,793	48.4%
Cherokee	27	77	10,165	95	114	14,228	338	903	89,405	460	1,094	113,798	52.4%
Clay	99	275	41,196	262	304	40,520	550	1,343	142,634	911	1,922	224,350	64.1%
Crawford	113	301	45,334	157	215	26,146	538	1,465	165,924	808	1,981	237,404	50.8%
Dickinson	40	120	15,456	153	180	24,733	432	993	109,052	625	1,293	149,241	44.5%
Emmet	61	193	29,256	128	164	22,920	269	754	77,912	458	1,111	130,088	53.7%
Fremont	23	78	9,707	100	143	16,161	277	702	73,902	400	923	99,770	68.2%
Greene	41	121	18,401	120	157	20,360	373	1,039	114,646	534	1,317	153,407	57.8%
Guthrie	19	63	9,475	94	139	18,490	326	851	94,564	439	1,053	122,529	52.6%
Harrison	55	159	22,820	201	257	31,460	515	1,318	141,984	771	1,734	196,264	57.2%
Ida	11	27	4,276	63	80	11,631	197	579	61,185	271	686	77,092	47.5%
Kossuth	54	161	22,655	138	168	21,222	341	911	94,765	533	1,240	138,642	45.5%
Lyon	17	55	7,539	47	76	8,074	189	554	55,489	253	685	71,102	37.4%
Mills	43	133	18,033	123	187	25,130	418	1,223	138,992	584	1,543	182,155	45.9%
Monona	23	67	8,359	225	352	45,053	313	848	83,426	561	1,267	136,838	53.3%
Montgomery	96	331	42,730	234	305	40,608	528	1,422	156,310	858	2,058	239,648	72.4%
O'Brien	65	190	28,009	99	162	18,860	344	908	93,503	508	1,260	140,372	43.0%
Osceola	15	49	6,419	31	35	4,695	111	274	24,632	157	358	35,746	24.7%
Page	81	259	32,894	262	335	45,091	687	1,776	193,217	1,030	2,370	271,202	66.1%
Palo Alto	31	104	12,667	111	134	15,065	234	632	65,105	376	870	92,837	40.3%
Plymouth	42	125	16,644	112	152	19,562	439	1,314	133,937	593	1,591	170,143	50.4%
Pottawattamie	702	2,202	303,203	1,829	2,280	335,962	4,653	11,839	1,400,576	7,184	16,321	2,039,741	81.4%
Sac	34	104	14,038	70	89	12,222	235	608	59,160	339	801	85,420	33.1%
Shelby	32	84	10,143	114	130	17,856	361	915	100,242	507	1,129	128,241	47.8%
Stoux	48	146	21,749	105	131	16,450	427	1,179	116,343	580	1,456	154,542	28.8%
Taylor	22	70	9,216	65	88	11,598	218	581	57,612	305	739	78,426	45.6%
Woodbury	667	2,055	287,328	2,381	3,045	444,418	4,974	13,325	1,539,911	8,022	18,425	2,271,657	69.7%
<b>Area Total</b>	<b>2,726</b>	<b>8,401</b>	<b>1,163,492</b>	<b>7,961</b>	<b>10,236</b>	<b>1,418,633</b>	<b>20,176</b>	<b>53,271</b>	<b>5,918,781</b>	<b>30,863</b>	<b>71,908</b>	<b>8,500,906</b>	<b>58.5%</b>
<b>Area 2 - Northern</b>													
Allamakee	92	294	41,707	162	189	26,328	472	1,157	132,308	726	1,640	200,343	44.6%
Black Hawk	1,076	3,264	446,924	2,827	3,331	464,823	5,240	12,142	1,385,303	9,143	18,737	2,297,050	55.5%
Bremer	48	144	21,882	186	264	29,887	334	903	93,467	568	1,311	145,236	36.5%
Buchanan	81	237	31,626	208	251	34,695	548	1,377	144,038	837	1,865	210,359	39.4%
Butler	55	175	21,295	133	161	19,318	333	938	90,809	521	1,274	131,422	40.3%
Calhoun	34	95	12,246	99	123	15,779	277	784	78,362	410	1,002	106,387	47.2%
Cerro Gordo	205	633	89,547	1,311	1,598	225,283	1,659	4,027	454,534	3,175	6,258	769,364	70.7%
Chickasaw	41	130	17,766	114	152	19,939	290	782	85,449	445	1,064	123,154	35.1%
Clayton	52	171	24,450	159	209	26,110	433	1,056	106,894	644	1,436	157,454	37.6%
Delaware	75	247	36,894	170	206	27,431	380	969	107,481	625	1,422	171,806	42.0%
Fayette	151	510	65,388	358	429	62,195	774	1,915	193,268	1,283	2,854	320,851	52.9%
Floyd	79	253	34,379	256	327	45,813	551	1,445	157,760	886	2,025	237,952	51.5%
Franklin	40	134	18,699	94	117	14,676	292	849	84,845	426	1,100	118,220	50.0%
Grundy	21	65	8,970	83	109	13,277	189	513	51,560	293	687	73,807	43.9%
Hamilton	64	213	29,343	201	302	38,253	456	1,227	134,689	721	1,742	202,285	56.8%
Hancock	27	83	12,361	98	143	19,762	272	780	85,306	397	1,006	117,429	43.6%
Hardin	101	334	43,777	250	412	49,927	548	1,494	151,994	899	2,240	245,698	54.4%
Howard	47	151	21,478	121	153	20,271	273	760	81,638	441	1,064	123,387	58.1%
Humboldt	40	115	16,472	101	132	15,231	294	760	71,093	435	1,007	102,796	47.3%
Marshall	298	936	153,979	771	903	153,656	1,835	4,706	588,418	2,904	6,545	896,053	64.2%
Mitchell	13	47	6,588	80	119	14,130	184	487	50,883	277	653	71,601	35.0%
Pocahontas	32	112	14,589	85	109	14,100	211	577	56,123	328	798	84,812	53.7%
Webster	309	911	129,743	963	1,219	166,901	1,683	4,149	459,724	2,955	6,279	756,368	63.9%
Winnebago	25	89	11,380	144	192	25,948	276	774	83,264	445	1,055	120,592	39.3%
Winneshiek	51	157	22,904	172	211	27,480	328	781	81,746	551	1,149	132,130	33.5%
Worth	12	38	5,499	105	138	16,413	197	558	54,934	314	734	76,846	44.9%
Wright	79	241	34,535	176	222	31,252	439	1,206	136,558	694	1,669	202,345	49.9%
<b>Area Total</b>	<b>3,148</b>	<b>9,779</b>	<b>1,374,421</b>	<b>9,427</b>	<b>11,721</b>	<b>1,618,878</b>	<b>18,768</b>	<b>47,116</b>	<b>5,202,448</b>	<b>31,343</b>	<b>68,616</b>	<b>8,195,747</b>	<b>52.3%</b>

**Food Stamp Participation by Case Type and County**

County	FIP Program			Food Assistance Only			Other Programs			TOTAL			PARTICIPATION RATE *
	Households	Recipients	Allotment	Households	Recipients	Allotment	Households	Recipients	Allotment	Households	Recipients	Allotment	
<b>Area 3 - Eastern</b>													
Cedar	53	166	23,396	161	213	26,823	426	1,220	133,526	640	1,599	183,745	62.1%
Clinton	447	1,330	188,316	1,586	1,889	270,962	2,300	5,477	631,815	4,333	8,696	1,091,093	83.3%
Des Moines	372	1,124	159,032	1,217	1,471	217,302	2,269	5,814	685,362	3,858	8,409	1,061,696	79.5%
Dubuque	555	1,661	231,108	1,748	2,183	296,617	2,594	6,587	750,712	4,897	10,431	1,278,437	65.2%
Henry	145	443	62,445	371	471	62,433	864	2,176	245,431	1,380	3,090	370,309	62.3%
Jackson	126	393	56,982	333	431	55,667	675	1,660	185,109	1,134	2,484	297,758	59.7%
Lee	303	916	132,475	916	1,143	159,845	1,787	4,507	509,225	3,006	6,566	801,545	77.2%
Louisa	73	225	30,012	141	175	24,496	426	1,179	127,011	640	1,579	181,519	49.9%
Muscatine	358	1,117	161,537	917	1,116	160,368	1,990	5,187	615,443	3,265	7,420	937,348	74.3%
Scott	1,622	5,108	731,529	4,713	5,578	870,796	7,924	19,474	2,391,704	14,259	30,160	3,994,029	89.1%
<b>Area Total</b>	<b>4,054</b>	<b>12,483</b>	<b>1,776,832</b>	<b>12,103</b>	<b>14,670</b>	<b>2,145,309</b>	<b>21,255</b>	<b>53,281</b>	<b>6,275,338</b>	<b>37,412</b>	<b>80,434</b>	<b>10,197,479</b>	<b>77.2%</b>
<b>Area 4 - Cedar Rapids</b>													
Appanoose	119	370	51,544	369	460	62,046	639	1,442	159,430	1,127	2,272	273,020	52.5%
Benton	95	299	49,283	332	429	64,358	672	1,793	221,405	1,099	2,521	335,046	59.3%
Davis	45	152	21,588	85	123	16,154	238	616	63,822	368	891	101,564	46.6%
Iowa	46	129	18,361	167	221	29,720	315	885	95,476	528	1,235	143,557	51.4%
Jasper	213	603	85,254	605	790	104,485	1,245	3,150	354,046	2,063	4,543	543,785	63.2%
Jefferson	131	377	53,989	656	738	109,009	629	1,438	164,647	1,416	2,553	327,645	63.8%
Johnson	506	1,628	231,687	2,049	2,316	356,180	2,809	6,630	816,125	5,364	10,574	1,403,992	32.5%
Jones	67	206	30,908	233	301	39,683	460	1,288	143,500	760	1,795	214,091	43.3%
Keokuk	47	144	18,187	218	273	33,573	336	907	93,545	601	1,324	145,305	57.1%
Linn	1,090	3,369	487,730	5,282	6,273	935,894	6,637	16,301	1,950,395	13,009	25,943	3,374,019	72.7%
Mahaska	179	540	77,237	674	789	117,873	1,000	2,522	279,843	1,853	3,851	474,953	78.0%
Monroe	48	147	20,496	142	189	22,838	261	681	74,048	451	1,017	117,382	51.7%
Poweshiek	117	375	53,856	179	231	30,003	506	1,255	134,227	802	1,861	218,086	54.6%
Tama	78	236	33,663	232	315	41,186	488	1,376	158,852	798	1,927	233,701	50.2%
Van Buren	41	138	18,419	116	161	20,699	259	676	68,790	416	975	107,908	49.5%
Wapello	469	1,410	204,876	1,436	1,723	256,726	2,021	4,563	542,138	3,926	7,696	1,003,740	74.8%
Washington	107	329	46,958	368	460	62,670	575	1,517	177,671	1,050	2,306	287,299	49.4%
<b>Area Total</b>	<b>3,398</b>	<b>10,452</b>	<b>1,504,036</b>	<b>13,143</b>	<b>15,792</b>	<b>2,303,097</b>	<b>19,090</b>	<b>47,040</b>	<b>5,497,960</b>	<b>35,631</b>	<b>73,284</b>	<b>9,305,093</b>	<b>56.4%</b>
<b>Area 5 - Des Moines</b>													
Adair	19	58	8,832	125	159	19,645	224	607	67,563	368	824	96,040	50.9%
Adams	18	56	8,505	51	65	9,143	130	381	36,479	199	502	54,127	60.2%
Boone	118	359	54,175	475	631	86,627	674	1,721	205,158	1,267	2,711	345,960	48.8%
Clarke	49	174	24,949	209	282	38,415	480	1,209	135,299	738	1,665	198,663	93.0%
Dallas	136	413	60,028	531	694	85,276	1,045	2,989	337,249	1,712	4,096	482,553	54.5%
Decatur	54	172	22,908	166	288	40,591	459	1,234	135,620	729	1,694	199,119	67.9%
Lucas	86	294	40,403	166	205	28,977	414	1,116	119,054	666	1,615	188,434	67.0%
Madison	42	128	17,895	183	255	30,316	317	949	106,464	542	1,332	154,675	53.0%
Marion	115	340	50,767	390	545	73,671	783	2,039	234,210	1,288	2,924	358,648	53.7%
Polk	2,696	8,379	1,218,765	11,429	13,758	2,078,654	16,693	41,412	5,154,493	30,818	63,549	8,451,912	86.2%
Ringgold	21	66	8,687	76	110	13,256	171	434	42,148	268	610	64,091	51.1%
Story	276	836	124,933	1,408	1,650	262,875	1,632	4,161	513,381	3,316	6,647	901,189	29.9%
Union	68	215	31,272	313	376	48,669	564	1,453	161,020	945	2,044	240,961	59.8%
Warren	135	416	59,278	471	604	79,213	899	2,556	294,555	1,505	3,576	433,046	53.9%
Wayne	44	141	19,248	113	135	19,211	248	666	69,548	405	942	108,007	46.2%
<b>Area Total</b>	<b>3,877</b>	<b>12,047</b>	<b>1,750,645</b>	<b>16,156</b>	<b>19,757</b>	<b>2,914,539</b>	<b>24,733</b>	<b>62,927</b>	<b>7,612,241</b>	<b>44,766</b>	<b>94,731</b>	<b>12,277,425</b>	<b>67.9%</b>
<b>State Total</b>	<b>17,203</b>	<b>53,162</b>	<b>7,569,426</b>	<b>58,790</b>	<b>72,176</b>	<b>10,400,456</b>	<b>104,022</b>	<b>263,635</b>	<b>30,506,768</b>	<b>180,015</b>	<b>388,973</b>	<b>48,476,650</b>	<b>62.0%</b>

\* Participation Rate is the percentage of individuals at or below 160%FPL who are receiving Food Assistance in a given area (County/SA/State).  
 It is calculated by dividing the number of Food Assistance Recipients in an area (county/SA/State) by the number of persons in that area at or below 160% of the Federal Poverty Level.  
 (As counted in the 2005-2009 American Community Survey)