



Agri-News

USDA – National Agricultural Statistical Service
Iowa Field Office

210 Walnut, Room 833 • Des Moines, Iowa 50309-2195
515-284-4340 • 1-800-772-0825 • FAX 515-284-4342 • nass-ia@nass.usda.gov
To access NASS reports - <http://www.nass.usda.gov>

Issued April 21, 2010

Vol 10-07

Iowa Prospective Plantings

Corn: Iowa farmers intend to plant 13.5 million acres of corn for all purposes as of March 1, 2010. This is down 200,000 acres from 2009.

All Hay: Iowa producers intend to harvest 1.25 million acres of hay, up 30,000 from last year.

Soybeans: Producers intend to plant 9.90 million acres of soybeans in Iowa this year. This is up 300,000 acres from the previous year's planted acres.

This report is based on the voluntary responses from nearly 2,000 Iowa producers. Data collection began February 26, with final interviews completed on March 16. This report provides only a preliminary indication of the acres farmers intend to plant. Actual plantings will depend greatly upon weather, economic conditions and the availability of production inputs at the time producers must make their final planting decisions.

Oats: Farmers intend to plant 195,000 acres of oats for all purposes, down 5,000 acres from last year.

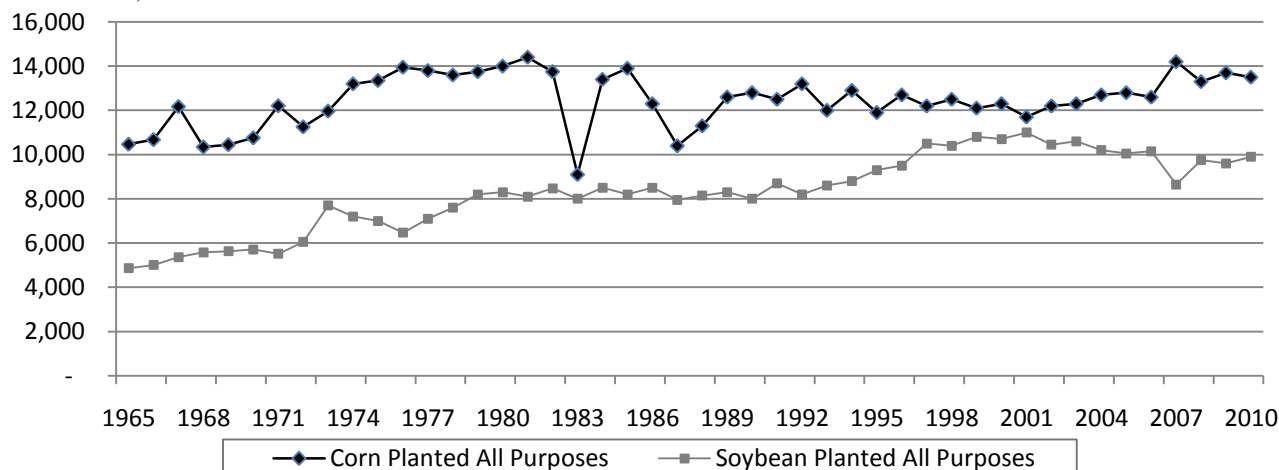
Prospective Plantings, May 1, Iowa and United States

Crop	Iowa				United States			
	2008	2009	Indicated 2010	'10 as % of '09	2008	2009	Indicated 2010	'10 as % of '09
	1,000 Acres	1,000 Acres	1,000 Acres	Percent	1,000 Acres	1,000 Acres	1,000 Acres	Percent
Corn, all	13,300	13,700	13,500	99	85,982	86,482	88,798	103
Oats	150	200	195	98	3,247	3,404	3,364	99
Soybeans	9,750	9,600	9,900	103	75,718	77,451	78,098	101
Hay, all ¹	1,550	1,220	1,250	102	60,152	59,755	60,460	101
Wheat, all	40	28	15	54	63,193	59,133	53,827	91

¹ Acres for harvest.

Corn and Soybean Acres Planted, Iowa, 1966-2010¹

(Thousand Bushels)



¹ 2010 figures are preliminary indications.

Grain Stocks

Iowa: Corn stocks in all positions on March 1, 2010 totaled 1.50 billion bushels, nearly unchanged from last year. Of the total stocks, 62 percent were stored on-farm. The December 2009 - February 2010 disappearance totaled 679 million bushels, 32 percent above the 516 million bushels used last year.

Soybeans stored in all positions on March 1, 2010 totaled 251 million bushels, down 13 percent from the 290 million bushels on hand March 1, 2009. Of the total stocks, 46 percent were stored on-farm. Indicated disappearance for the December 2009 - February 2010 period was 144 million bushels, 20 percent above the 120 million bushels used last year.

Oat stocks stored on the farm on March 1, 2010 totaled 1.40 million bushels, 18 percent below the 1.70 million bushels on hand March 1, 2009.

United States: Corn stocks in all positions on March 1, 2010 totaled 7.69 billion bushels, up 11 percent from March 1, 2009. Of the total stocks, 4.55 billion bushels are stored on farms, up 11 percent from a year earlier. Off-farm stocks, at 3.15 billion bushels, are up 10 percent

from a year ago. The December 2009 - February 2010 indicated disappearance is 3.23 billion bushels, compared with 3.12 billion bushels during the same period last year.

Soybeans stored in all positions on March 1, 2010 totaled 1.27 billion bushels, down 2 percent from March 1, 2009. Soybean stocks stored on farms are estimated at 609 million bushels, down 7 percent from a year ago. Off-farm stocks, at 661 million bushels, are up 2 percent from last March. Indicated disappearance for the December 2009 - February 2010 quarter totaled 1.07 billion bushels, up 10 percent from the same period a year earlier.

Oats stored in all positions on March 1, 2010 totaled 98.0 million bushels, 3 percent above the stocks on March 1, 2009. Of the total stocks on hand, 30.9 million bushels are stored on farms, up 2 percent from a year ago. Off-farm stocks totaled 67.1 million bushels, up 3 percent from the previous year. Indicated disappearance during December 2009 - February 2010 totaled 12.6 million bushels, down 35 percent from the same period a year ago.

Stocks of Grain, March 1, Iowa and United States

Position and Grain	Iowa			United States		
	March 1 2009	March 1 2010	'10 as % of '09	March 1 2009	March 1 2010	'10 as % of '09
	(1,000 Bushels)	(1,000 Bushels)	(Percent)	(1,000 Bushels)	(1,000 Bushels)	(Percent)
On-Farm Stocks						
Corn	940,000	930,000	99	4,085,000	4,548,000	111
Soybeans	150,000	115,000	77	656,500	609,200	93
Oats	1,700	1,400	82	30,200	30,900	102
Wheat	*	*	*	280,400	348,200	124
Off-Farm Stocks ¹						
Corn	565,251	568,433	101	2,869,145	3,145,940	110
Soybeans	139,912	136,325	97	645,289	660,806	102
Oats	5,851	*	*	65,250	67,126	103
Wheat	1,837	2,093	114	759,664	1,004,133	132
Total Stocks						
Corn	1,505,251	1,498,433	100	6,954,145	7,693,940	111
Soybeans	289,912	251,325	87	1,301,789	1,270,006	98
Oats	7,551	*	*	95,450	98,026	103
Wheat	*	*	*	1,040,064	1,352,333	130

¹ Includes stocks at mills, elevators, warehouses, terminals, and processors.

* Data not published to avoid disclosure of individual operations.

Alfalfa Hay: Area Harvested, Yield and Production Iowa by County, 2009

[Specific county level data not published to avoid disclosure of individual operations.]

County and District	Area Harvested	Yield	Production	County and District	Area Harvested	Yield	Production
	(Acres)	(Tons)	(Tons)		(Acres)	(Tons)	(Tons)
Buena Vista				Benton	9,650	3.95	38,200
Cherokee				Cedar	6,450	3.95	25,600
Clay				Clinton	9,100	3.95	36,000
Dickinson	3,400	3.40	11,500	Iowa	13,600	3.70	50,500
Emmet				Jackson	28,800	3.70	107,000
Lyon				Johnson	15,000	3.70	55,600
O'Brien				Jones	13,900	3.90	54,500
Osceola				Linn	11,200	3.65	40,800
Palo Alto				Muscatine			
Plymouth	9,700	4.10	39,800	Scott			
Pocahontas				Other counties	8,300	3.85	31,800
Sioux	8,700	4.50	39,000	East Central	116,000	3.80	440,000
Other counties	32,200	3.70	119,700	Adair	22,000	3.55	78,500
Northwest	54,000	3.90	210,000	Adams			
Butler	5,750	3.90	22,300	Cass	9,500	3.45	33,000
Cerro Gordo				Fremont			
Floyd	3,950	3.60	14,300	Mills	2,950	3.40	10,000
Franklin				Montgomery	6,950	3.20	22,200
Hancock				Page	8,700	3.35	29,300
Humboldt				Pottawattamie	7,800	3.60	28,000
Kossuth				Taylor	14,500	2.90	42,000
Mitchell				Other counties	10,600	3.50	37,000
Winnebago				Southwest	83,000	3.35	280,000
Worth	2,600	3.25	8,400	Appanoose	21,600	3.20	69,000
Wright				Clarke	21,200	2.60	55,500
Other counties	19,700	3.65	72,000	Decatur	17,900	3.20	57,000
North Central	32,000	3.65	117,000	Lucas	13,900	3.00	42,000
Allamakee	30,100	3.90	118,000	Madison	18,500	3.40	63,000
Black Hawk				Marion	11,000	3.45	38,000
Bremer	6,900	3.70	25,500	Monroe	17,200	3.10	53,000
Buchanan	7,550	3.95	30,000	Ringgold	21,900	2.85	62,500
Chickasaw	7,800	4.35	34,000	Union	17,000	3.75	64,000
Clayton	31,000	4.40	136,000	Warren	16,500	2.95	49,000
Delaware	16,900	4.30	73,000	Wayne	17,300	2.70	47,000
Dubuque	29,400	4.05	119,500	Other counties			
Fayette	16,200	4.05	66,000	South Central	194,000	3.10	600,000
Howard				Davis	23,000	3.25	74,400
Winneshiek	25,300	4.00	101,500	Des Moines	4,600	3.50	16,000
Other counties	11,850	3.90	46,500	Henry	7,800	3.45	27,000
Northeast	183,000	4.10	750,000	Jefferson	9,800	3.15	30,900
Audubon	5,950	3.55	21,000	Keokuk			
Calhoun	2,000	3.75	7,500	Lee	9,150	3.60	33,000
Carroll				Louisa	3,250	3.80	12,400
Crawford	8,400	4.10	34,500	Mahaska			
Greene	4,600	3.40	15,700	Van Buren	13,900	3.65	50,500
Guthrie				Wapello	12,300	2.90	35,700
Harrison				Washington	9,500	3.50	33,100
Ida				Other counties	18,700	3.60	67,000
Monona				Southeast	112,000	3.40	380,000
Sac				State	920,000	3.60	3,312,000
Shelby							
Woodbury	8,350	4.05	34,000				
Other counties	43,200	3.65	157,300				
West Central	72,500	3.70	270,000				
Boone	4,550	3.10	14,200				
Dallas	5,000	3.60	18,000				
Grundy							
Hamilton	2,300	3.05	7,000				
Hardin							
Jasper	13,800	3.70	51,000				
Marshall							
Polk							
Poweshiek	14,200	3.85	55,000				
Story							
Tama	10,800	3.80	40,800				
Webster	2,600	3.15	8,200				
Other counties	20,250	3.50	70,800				
Central	73,500	3.60	265,000				

Other Hay: Area Harvested, Yield and Production Iowa by County, 2009

[Specific county and district level data not published to avoid disclosure of individual operations.]

County and District	Area Harvested	Yield	Production	County and District	Area Harvested	Yield	Production
	(Acres)	(Tons)	(Tons)		(Acres)	(Tons)	(Tons)
Northwest	14,500	2.45	35,500	Adair	3,400	2.30	7,900
Floyd	1,660	3.05	5,100	Cass	2,600	2.05	5,300
Wright	900	2.35	2,100	Mills	1,700	2.30	3,900
North Central	11,500	2.65	30,500	Page	5,500	2.10	11,500
Allamakee	2,900	2.30	6,700	Southwest	29,500	2.20	65,000
Northeast	30,000	2.65	80,000	Appanoose	15,800	2.25	35,400
Greene	1,100	2.80	3,100	Lucas	11,000	2.00	21,900
Harrison	1,500	2.80	4,200	Marion	4,700	2.65	12,500
Sac	1,150	2.50	2,900	Ringgold	12,200	2.20	26,800
Shelby	1,140	2.30	2,600	Union	6,600	1.95	12,800
West Central	20,000	2.45	49,000	Warren	4,500	2.00	8,900
Boone	700	2.45	1,700	Wayne	13,000	2.15	28,000
Grundy	900	2.05	1,850	South Central	102,000	2.10	212,000
Poweshiek	2,200	3.20	7,000	Davis	16,500	2.10	35,000
Central	19,000	2.50	47,500	Des Moines	1,350	2.45	3,300
Iowa	3,700	2.30	8,500	Henry	2,800	2.30	6,500
East Central	26,500	2.55	67,500	Jefferson	3,100	2.10	6,500
				Lee	3,700	2.15	8,000
				Louisa	750	2.25	1,700
				Wapello	4,000	2.40	9,500
				Southeast	47,000	2.20	103,000
				State	300,000	2.30	690,000

PERMIT NO. G-38
USDA
POSTAGE & FEES PAID
PRESRT STD

AGRI NEWS IS PUBLISHED BY USDA NATIONAL AGRICULTURAL
STATISTICS SERVICE IOWA FIELDS OFFICE, 210 WALNUT ST. RM.
833, DES MOINES IA 50309. POSTMASTER: SEND ADDRESS
CHANGES TO AGRI-NEWS, C/O SD AGRICULTURAL STATISTICS,
PO BOX 5068 SIOUX FALLS, SD 57117.