



## 2011 Acreage

**Iowa:** Corn planted for all purposes increased 6 percent from 2010 to 14.2 million acres. Corn to be harvested for grain is forecasted at 13.8 million acres. Soybean acres planted is estimated at 9.20 million, down 600,000 from 2010, a 6 percent decrease. Soybean acres to be harvested is forecasted at 9.11 million acres. The acreage estimates in this report are based on data collected from May 29 through June 17.

Producers also reported the percent of genetically modified (GM) seed varieties used to plant the 2011 corn and soybean acres. The percent of corn acreage planted to insect resistant (Bt) varieties is estimated at 13 percent, herbicide resistant only varieties were planted on 16 percent of the acres, and stacked gene varieties were planted on 61 percent of the acres. Overall, 90 percent of the corn acreage was planted to GM seed. Ninety-seven percent of Iowa's soybean acreage was planted with herbicide resistant GM seed.

**United States:** Corn planted area for all purposes in 2011 is estimated at 92.3 million acres, up 5 percent from last year, and the second highest planted acreage in the United States since 1944, behind only

the 93.5 million acres planted in 2007. Growers expect to harvest 84.9 million acres for grain, up 4 percent from last year.

Soybean planted area for 2011 is estimated at 75.2 million acres, down 3 percent from last year. Area for harvest, at 74.3 million acres, is also down 3 percent from 2010. Record high planted acreage is estimated in New York and North Dakota.

All wheat planted area is estimated at 56.4 million acres, up 5 percent from 2010. The 2011 winter wheat planted area, at 41.1 million acres, is up 10 percent from last year. Of this total, about 29.1 million acres are Hard Red Winter, 8.3 million acres are Soft Red Winter, and 3.7 million acres are White Winter. Area planted to other spring wheat for 2011 is estimated at 13.6 million acres, down 1 percent from 2010. Of this total, about 12.9 million acres are Hard Red Spring wheat. Durum planted area for 2011 is estimated at 1.70 million acres, down 34 percent from the previous year. Flooding in the Dakotas reduced acres planted to other spring and Durum wheat.

### 2011 Crop Summary, June 1, Iowa and United States

Crop	Iowa				United States			
	Planted for All Purposes		Harvested for Grain <sup>1</sup>		Planted for All Purposes		Harvested for Grain <sup>1</sup>	
	2010	2011	2010	2011 <sup>2</sup>	2010	2011	2010	2011 <sup>2</sup>
	(1,000 Acres)	(1,000 Acres)	(1,000 Acres)	(1,000 Acres)	(1,000 Acres)	(1,000 Acres)	(1,000 Acres)	(1,000 Acres)
Corn, all .....	13,400	14,200	13,050	13,750	88,192	92,282	81,446	84,888
Oats .....	180	135	70	60	3,138	2,587	1,263	934
Soybeans .....	9,800	9,200	9,730	9,110	77,404	75,208	76,616	74,258
Hay, all .....	*	*	1,200	1,070	*	*	59,862	57,605
Alfalfa .....	*	*	880	730	*	*	19,956	19,329
All other .....	*	*	320	340	*	*	39,906	38,276
Winter Wheat ..	15	23	10	16	37,335	41,108	31,749	32,307

<sup>1</sup> Harvested for principal use of each crop.

<sup>2</sup> Forecasted.

\* Data not available.

## Grain Stocks

**Iowa:** Corn stocks in all positions on June 1, 2011 totaled 783 million bushels, down 12 percent from the 889 million bushels on hand June 1 of last year. Of the total stocks, 45 percent were stored on-farm. The March - May 2011 disappearance totaled 488 million bushels, 20 percent less than the 610 million bushels used last year.

Soybeans stored in all positions on June 1, 2011 totaled 139 million bushels, up 13 percent from the 123 million bushels on hand June 1, 2010. Of the total stocks, 36 percent were stored on-farm. Disappearance of soybean stocks for the March - May 2011 period was 107 million bushels, down 16 percent from the 128 million bushels used last year.

Oat stocks stored on the farm on June 1, 2011 totaled 630,000 bushels, up 5 percent from a year ago.

**United States:** Corn stocks in all positions on June 1, 2011 totaled 3.67 billion bushels, down 15 percent from June 1, 2010. Of the total stocks, 1.68 billion bushels are stored on farms, down 21 percent from a

year earlier. Off-farm stocks, at 1.99 billion bushels, are down 9 percent from a year ago. The March - May 2011 indicated disappearance is 2.85 billion bushels, compared with 3.38 billion bushels during the same period last year.

Soybeans stored in all positions on June 1, 2011 totaled 619 million bushels, up 8 percent from June 1, 2010. On-farm stocks totaled 218 million bushels, down 6 percent from a year ago. Off-farm stocks, at 401 million bushels, are up 19 percent from a year ago. Indicated disappearance for the March - May 2011 quarter totaled 630 million bushels, down 10 percent from the same period a year earlier.

Oats stored in all positions on June 1, 2011 totaled 67.6 million bushels, 16 percent below the stocks on June 1, 2010. Of the total stocks on hand, 14.6 million bushels are stored on farms, 17 percent lower than a year ago. Off-farm stocks totaled 53.0 million bushels, 15 percent below the previous year. Indicated disappearance during March - May 2011 totaled 18.7 million bushels, compared with 17.7 million bushels during the same period a year ago.

### Stocks of Grain, June 1, Iowa and United States

Position and Grain	Iowa			United States		
	June 1 2010	June 1 2011	'11 as % of '10	June 1 2009	June 1 2010	'11 as % of '10
	(1,000 Bushels)	(1,000 Bushels)	(Percent)	(1,000 Bushels)	(1,000 Bushels)	(Percent)
<b>On-Farm Stocks</b> .....						
Corn .....	430,000	350,000	81	2,131,400	1,681,500	79
Soybeans .....	49,000	50,000	102	232,600	217,700	94
Oats .....	600	630	105	17,600	14,580	83
Wheat .....	(D)	(D)	(X)	209,900	130,915	62
<b>Off-Farm Stocks</b> <sup>1</sup> .....						
Corn .....	458,814	432,594	94	2,178,671	1,988,654	91
Soybeans .....	74,024	89,225	121	338,523	401,382	119
Oats .....	(D)	5,926	(X)	62,716	53,025	85
Wheat .....	1,983	1,949	98	765,737	729,866	95
<b>Total Stocks</b> .....						
Corn .....	888,814	782,594	88	4,310,071	3,670,154	85
Soybeans .....	123,024	139,225	113	571,123	619,082	108
Oats .....	(D)	6,556	(X)	80,316	67,605	84
Wheat .....	(D)	(D)	(X)	975,637	860,781	88

<sup>1</sup> Includes stocks at mills, elevators, warehouses, terminals, and processors.

(D)Data not published to avoid disclosure of individual operations.

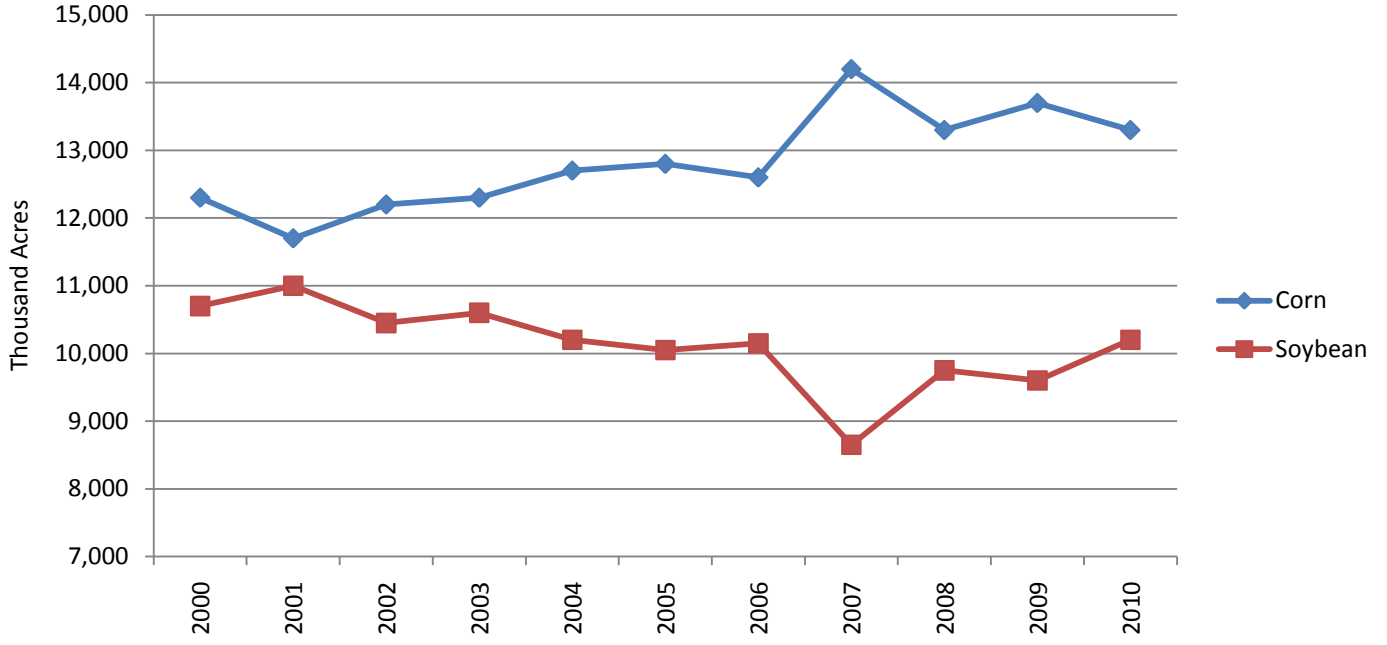
(X)Comparison to past year is not applicable.

## Number of Farms, Land in Farms, and Average Farm Size, Iowa by County, 2010

County and District	Number of Farms <sup>1</sup>	Land in Farms	Average Farm Size	County and District	Number of Farms	Land in Farms	Average Farm Size
	(Number)	(Acres)	(Acres)		(Number)	(Acres)	(Acres)
Buena Vista .....	910	360,000	396	Benton .....	1,250	400,000	320
Cherokee .....	830	310,000	373	Cedar .....	1,050	340,000	324
Clay .....	790	330,000	418	Clinton .....	1,300	390,000	300
Dickinson .....	560	230,000	411	Iowa .....	1,100	340,000	309
Emmet .....	530	250,000	472	Jackson .....	1,250	290,000	232
Lyon .....	1,100	320,000	291	Johnson .....	1,300	320,000	246
O'Brien .....	980	340,000	347	Jones .....	1,050	320,000	305
Osceola .....	660	250,000	379	Linn .....	1,400	330,000	236
Palo Alto .....	850	350,000	412	Muscatine .....	850	220,000	259
Plymouth .....	1,450	520,000	359	Scott .....	850	250,000	294
Pocahontas .....	790	360,000	456	<b>East Central .....</b>	<b>11,400</b>	<b>3,200,000</b>	<b>281</b>
Sioux .....	1,650	480,000	291	Adair .....	760	320,000	421
<b>Northwest .....</b>	<b>11,100</b>	<b>4,100,000</b>	<b>369</b>	Adams .....	610	230,000	377
Butler .....	1,200	360,000	300	Cass .....	760	320,000	421
Cerro Gordo .....	840	340,000	405	Fremont .....	490	250,000	510
Floyd .....	990	300,000	303	Mills .....	510	200,000	392
Franklin .....	920	360,000	391	Montgomery .....	550	220,000	400
Hancock .....	930	360,000	387	Page .....	800	280,000	350
Humboldt .....	620	270,000	435	Pottawattamie .....	1,150	490,000	426
Kossuth .....	1,400	600,000	429	Taylor .....	770	290,000	377
Mitchell .....	880	290,000	330	<b>Southwest .....</b>	<b>6,400</b>	<b>2,600,000</b>	<b>406</b>
Winnebago .....	680	250,000	368	Appanoose .....	730	210,000	288
Worth .....	670	230,000	343	Clarke .....	690	200,000	290
Wright .....	770	340,000	442	Decatur .....	730	240,000	329
<b>North Central .....</b>	<b>9,900</b>	<b>3,700,000</b>	<b>374</b>	Lucas .....	700	180,000	257
Allamakee .....	1,000	270,000	270	Madison .....	950	290,000	305
Black Hawk .....	960	280,000	292	Marion .....	950	250,000	263
Bremer .....	1,000	240,000	240	Monroe .....	660	210,000	318
Buchanan .....	1,150	360,000	313	Ringgold .....	720	270,000	375
Chickasaw .....	1,050	290,000	276	Union .....	670	220,000	328
Clayton .....	1,600	410,000	256	Warren .....	1,200	250,000	208
Delaware .....	1,400	330,000	236	Wayne .....	800	280,000	350
Dubuque .....	1,500	310,000	207	<b>South Central .....</b>	<b>8,800</b>	<b>2,600,000</b>	<b>295</b>
Fayette .....	1,400	420,000	300	Davis .....	920	220,000	239
Howard .....	890	280,000	315	Des Moines .....	650	180,000	277
Winneshiek .....	1,450	310,000	214	Henry .....	880	240,000	273
<b>Northeast .....</b>	<b>13,400</b>	<b>3,500,000</b>	<b>261</b>	Jefferson .....	770	200,000	260
Audubon .....	670	280,000	418	Keokuk .....	1,150	320,000	278
Calhoun .....	830	360,000	434	Lee .....	880	240,000	273
Carroll .....	980	360,000	367	Louisa .....	700	190,000	271
Crawford .....	850	430,000	506	Mahaska .....	1,050	290,000	276
Greene .....	820	350,000	427	Van Buren .....	800	220,000	275
Guthrie .....	980	350,000	357	Wapello .....	750	170,000	227
Harrison .....	800	360,000	450	Washington .....	1,250	330,000	264
Ida .....	620	270,000	435	<b>Southeast .....</b>	<b>9,800</b>	<b>2,600,000</b>	<b>265</b>
Monona .....	630	380,000	603	<b>State .....</b>	<b>92,400</b>	<b>30,800,000</b>	<b>333</b>
Sac .....	800	360,000	450				
Shelby .....	870	360,000	414				
Woodbury .....	1,150	440,000	383				
<b>West Central .....</b>	<b>10,000</b>	<b>4,300,000</b>	<b>430</b>				
Boone .....	930	330,000	355				
Dallas .....	910	310,000	341				
Grundy .....	800	310,000	388				
Hamilton .....	880	350,000	398				
Hardin .....	950	340,000	358				
Jasper .....	1,150	430,000	374				
Marshall .....	930	330,000	355				
Polk .....	750	250,000	333				
Poweshiek .....	950	320,000	337				
Story .....	1,050	350,000	333				
Tama .....	1,200	430,000	358				
Webster .....	1,100	450,000	409				
<b>Central .....</b>	<b>11,600</b>	<b>4,200,000</b>	<b>362</b>				

<sup>1</sup> A farm is any establishment from which \$1,000 or more of agricultural products were sold or would normally be sold during the year.

# Acres Planted: Iowa, 2000-2010



PRESRT STD  
 POSTAGE & FEES PAID  
 USDA  
 PERMIT NO. G-38

AGRI NEWS IS PUBLISHED BY USDA NATIONAL AGRICULTURAL  
 STATISTICS SERVICE IOWA FIELDS OFFICE, 210 WALNUT ST. RM  
 833, DES MOINES IA 50309, POSTMASTER: SEND ADDRESS  
 CHANGES TO AGRI-NEWS, C/O SD AGRICULTURAL STATISTICS,  
 PO BOX 5068 SIOUX FALLS, SD 57117.