



# Agri-News

USDA – National Agricultural Statistical Service  
Iowa Field Office

210 Walnut, Room 833 • Des Moines, Iowa 50309-2195  
515-284-4340 • 1-800-772-0825 • FAX 515-284-4342 • nass-ia@nass.usda.gov  
To access NASS reports - <http://www.usda.gov/nass/>

Vol 07-06

Issued April 10, 2007

## Iowa Prospective Plantings

**Corn:** Iowa farmers intend to plant 13.9 million acres of corn for all purposes as of March 1, 2007. This is up 1.30 million acres from 2006. The 1.30 million acre increase ties for the fifth largest year-to-year increase.

**Soybeans:** Producers intend to plant 9.20 million acres of soybeans in Iowa this year. This is down 950,000 acres from the previous year's planted acres. If realized, this would be the smallest soybean acreage since 1994 and would be the largest year-to-year drop in soybean acres.

**Oats:** Farmers intend to plant 140,000 acres of oats for all purposes, down 70,000 acres from last year.

**All Hay:** Iowa producers intend to harvest 1.40 million acres of hay, down 100,000 from last year.

*This report is based on the voluntary responses from nearly two thousand Iowa producers. Data collection began February 26, with final interviews completed on March 15. This report provides only a preliminary indication of the acres farmers intend to plant. Actual plantings will depend greatly upon weather, economic conditions and the availability of production inputs at the time producers must make their final planting decisions.*

Prospective Plantings, March 1, Iowa and United States

Crop	Iowa				United States			
	2005	2006	Indicated 2007	'07 as % of '06	2005	2006	Indicated 2007	'07 as % of '06
	<i>Thousand Acres</i>	<i>Thousand Acres</i>	<i>Thousand Acres</i>	<i>Percent</i>	<i>Thousand Acres</i>	<i>Thousand Acres</i>	<i>Thousand Acres</i>	<i>Percent</i>
Corn, all	12,800	12,600	13,900	110	81,779	78,327	90,454	115
Oats	210	210	140	67	4,246	4,168	4,029	97
Soybeans	10,050	10,150	9,200	91	72,032	75,522	67,140	89
Hay, all <sup>1</sup>	1,600	1,600	1,400	93	61,729	60,807	63,056	104
Wheat, all	20	25	40	160	57,229	57,344	60,303	105

<sup>1</sup> Acres for harvest.



## Grain Stocks

**Iowa:** Corn stocks in all positions on March 1, 2007 totaled 1.37 billion bushels, down 11 percent from last year. Of the total stocks, 61 percent were stored on-farm. The December 2006 - February 2007 disappearance totaled 513 million bushels, 12 percent above the 457 million bushels used last year.

Soybeans stored in all positions on March 1, 2007 totaled 377 million bushels, up 2 percent from the 370 million bushels on hand March 1, 2006. Of the total stocks, 52 percent were stored on-farm. Indicated disappearance for the December 2006 - February 2007 period was 122 million bushels, 8 percent above the 113 million bushels used last year.

Oat stocks stored on the farm on March 1, 2007 totaled 1.40 million bushels, 36 percent below the 2.20 million bushels on hand March 1, 2006. Oat stocks at off-farm facilities totaled 5.57 million bushels.

**United States:** Corn stocks in all positions on March 1, 2007 totaled 6.07 billion bushels, down 13 percent from March 1, 2006. Of the total stocks, 3.33 billion bushels are stored on farms, down 18 percent from a year earlier.

Off-farm stocks, at 2.74 billion bushels, are down 7 percent from a year ago. The December 2006 - February 2007 indicated disappearance is 2.86 billion bushels, compared with 2.83 billion bushels during the same period last year.

Soybeans stored in all positions on March 1, 2007 totaled 1.78 billion bushels, up 7 percent from a year ago and the largest March 1 stocks on record. Soybean stocks stored on farms are estimated at 910 million bushels, up 4 percent from a year ago. Off-farm stocks, at 874 million bushels, are up 10 percent from last March. Indicated disappearance for the December 2006 - February 2007 quarter totaled 917 million bushels, up 10 percent from the same period a year earlier.

Oats stored in all positions on March 1, 2007 totaled 71.0 million bushels, 5 percent below the stocks on March 1, 2006. Of the total stocks on hand, 33.9 million bushels are stored on farms, down 20 percent from a year ago. Off-farm stocks totaled 37.1 million bushels, up 14 percent from the previous year. Indicated disappearance during December 2006 - February 2007 totaled 27.9 million bushels, up 34 percent from the same period a year ago.

### Stocks of Grain, March 1, Iowa and United States

Position and Grain	Iowa			United States		
	March 1 2006	March 1 2007	'07 as % of '06	March 1 2006	March 1 2007	'07 as % of '06
	<i>1,000 Bushels</i>	<i>1,000 Bushels</i>	<i>Percent</i>	<i>1,000 Bushels</i>	<i>1,000 Bushels</i>	<i>Percent</i>
<b>On-Farm Stocks</b>						
Corn	950,000	830,000	87	4,055,000	3,330,000	82
Soybeans	200,000	195,000	98	872,000	910,000	104
Oats	2,200	1,400	64	42,200	33,900	80
Wheat	*	*	*	256,000	192,450	75
<b>Off-Farm Stocks <sup>1</sup></b>						
Corn	589,286	537,338	91	2,932,328	2,739,692	93
Soybeans	169,775	182,201	107	797,206	874,276	110
Oats	4,903	5,569	114	32,673	37,127	114
Wheat	*	1,942	*	716,215	663,320	93
<b>Total Stocks</b>						
Corn	1,539,286	1,367,338	89	6,987,328	6,069,692	87
Soybeans	369,775	377,201	102	1,669,206	1,784,276	107
Oats	7,103	6,969	98	74,873	71,027	95
Wheat	*	*	*	972,215	855,770	88

<sup>1</sup> Includes stocks at mills, elevators, warehouses, terminals, and processors.

\* Data not published to avoid disclosure of individual operations.

## Livestock Slaughter

**Iowa:** Commercial red meat production in Iowa during February 2007 totaled 486.7 million pounds, down 28.7 million pounds from February 2006. There were 2.2 million hogs slaughtered in February 2007, down from

2.3 million hogs in February 2006. The average live weight of hogs slaughtered was 270 pounds, down 4 pounds from last year.

### Commercial Red Meat Production: By State and United States <sup>1</sup>

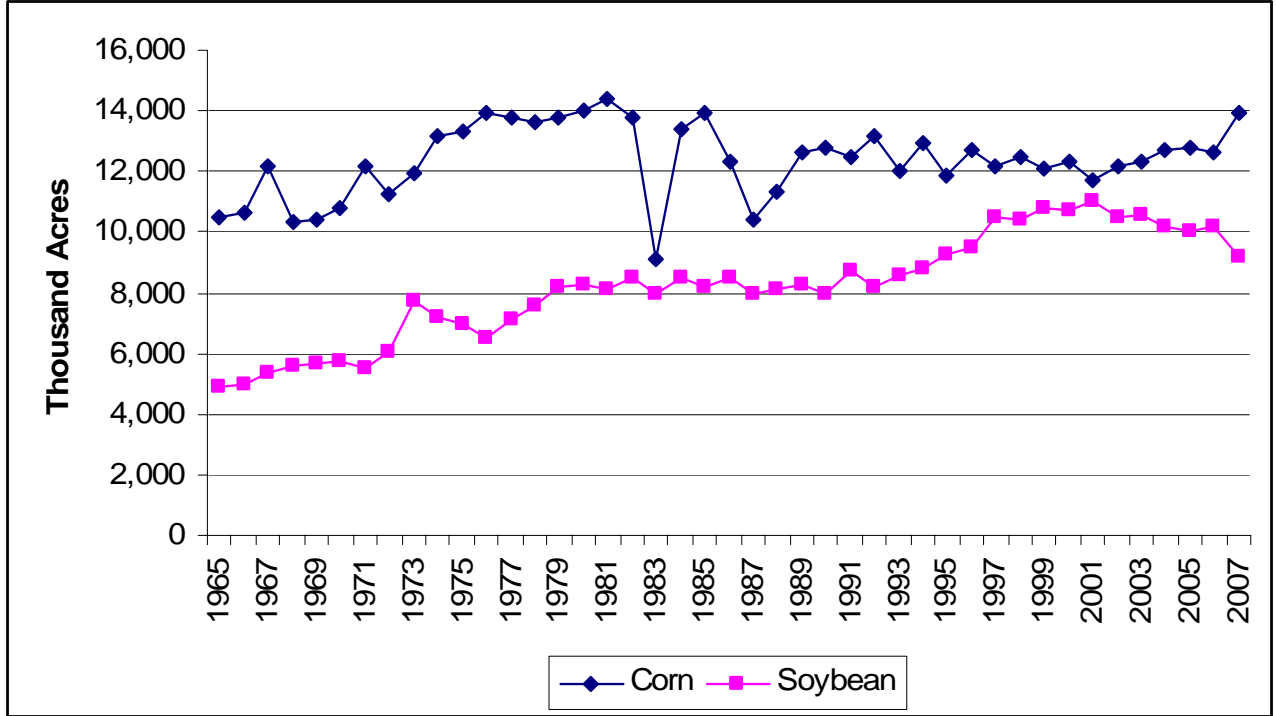
State	Feb 2006	Jan 2007	Feb 2007	Feb 07 as % of <sup>2</sup>	
				Feb 2006	Jan 2007
	<i>Million Pounds</i>	<i>Million Pounds</i>	<i>Million Pounds</i>	<i>Percent</i>	<i>Percent</i>
AL	2.6	2.8	2.2	84	77
AK		0.1		71	67
AZ	27.7	33.5	31.1	112	93
AR	4.2	4.4	4.2	101	96
CA	114.6	148.4	131.7	115	89
CO	137.7	147.7	141.5	103	96
DE-MD	2.9	3.8	3.1	108	84
FL	4.7	6.7	6.2	131	92
GA	9.4	15.8	13.3	141	84
HI	0.7	0.8	0.7	100	88
ID	23.8	4.2	7.8	33	186
IL	211.1	239.4	203.4	96	85
IN	115.6	138.5	114.6	99	83
IA	515.4	584.0	486.7	94	83
KS	414.0	502.0	452.9	109	90
KY	37.1	46.2	38.2	103	83
LA	0.8	0.7	0.7	92	106
MI	30.8	41.7	36.8	119	88
MN	179.8	222.8	188.1	105	84
MS	23.9	26.4	22.2	93	84
MO	55.6	122.5	108.8	196	89
MT	1.2	1.4	1.3	107	97
NE	527.2	604.2	536.9	102	89
NV	0.1	0.1	0.1	99	72
N ENG <sup>3</sup>	0.9	1.1	0.8	95	75
NJ	3.7	5.0	4.3	116	87
NM	0.5	0.6	0.5	115	91
NY	2.6	3.2	2.4	92	73
NC	178.9	205.6	181.0	101	88
ND	2.7	3.0	2.5	90	82
OH	21.8	25.7	21.5	99	84
OK	82.0	87.2	80.5	98	92
OR	3.6	4.5	4.1	113	92
PA	92.3	110.0	96.9	105	88
SC	19.3	21.4	19.5	101	91
SD	85.0	81.9	70.5	83	86
TN	15.2	18.1	16.0	105	89
TX	316.8	354.6	331.9	105	94
UT	39.6	34.5	34.2	86	99
VA	34.3	37.0	35.3	103	95
WA	57.5	69.6	70.7	123	102
WV	0.4	0.6	0.4	114	72
WI	91.3	130.0	109.5	120	84
WY	0.5	0.6	0.6	110	90
US	3,489.9	4,092.3	3,615.6	104	88

<sup>1</sup> Includes total beef, veal, pork, lamb, and mutton.

<sup>2</sup> Percentages based on unrounded data.

<sup>3</sup> N ENG includes CT, ME, MA, NH, RI, and VT.

## Corn and Soybean Acres Planted Iowa, 1965-2007



PRESRT STD  
 POSTAGE & FEES PAID  
 USDA  
 PERMIT NO. G-38

AGRICULTURAL STATISTICS SERVICE IOWA FIELD OFFICE, 210 WALNUT ST. RM  
 833, DES MOINES IA 50309. POSTMASTER: SEND ADDRESS  
 CHANGES TO AGRICULTURAL STATISTICS,  
 PO BOX 5068 SIOUX FALLS, SD 57117.