

A d d e n d u m

Iowa Department of Transportation
Office of Contracts

Date of Letting: July 19, 2011
Date of Addendum: July 6, 2011

B.O.	Proposal ID	Proposal Work Type	County	Project Number	Addendum
079	65-5341-068	BRIDGE NEW - OTHER	MILLS	NHSX-534-1(68)--3H-65	19jul079.a01

Notice: Only the bid proposal holders receive this addendum and responsibility for notifying any potential subcontractors or suppliers remains with the proposal holder.

Add the following to the Estimating Proposal, page 2, Proposal Notes:

To account for potential wet conditions when high water levels for the Missouri River would impede productive work on this contract, the Iowa DOT will allow a suspension of working days for any periods when the water surface elevation for the Missouri River exceeds Elev. 962.0 (NAVD 1988 Datum).

Make the following changes to the Proposal Special Provisions List and the Proposal Special Provisions Text:

Add the following:

SP-090142 July 19, 2011

SPECIAL PROVISIONS FOR EEO/AA REQUIREMENTS FOR
CONTRACTOR AND SUBCONTRACTORS

005.0012

PROTECTION OF MIGRATORY BIRD NESTS: NO
CONSTRUCTION WHERE ACTIVE NESTS ARE PRESENT.

SS-09011 July 20, 2010

MOBILIZATION FOR EROSION CONTROL

Replace DBE-110621 with the following:

DBE-110719

AMENDMENT TO THE 2011 ANNUAL DIRECTORY OF CERTIFIED
DBE'S

Make the following change to SP-090128:

In the second sentence of paragraph 090128.05.C.1, which describes the items included in payment for the lump sum price for Demonstration Piles, remove the words “~~reinforcing steel.~~”

Make the following changes to the plan:

On Design Sheet 2 of 194, replace the Clay Blanket Detail with the attached Clay Blanket Detail.

On Design Sheet 3 of 194, Estimate Reference Information, Item No. 8, add the following:

In accordance with Section 6.6.4.1.4.1 of the Iowa DOT Bridge Design Manual, the Concrete Seal Coat design for Pier Nos. 2-16 is based on a water surface elevation= 966.1 (NGVD 1929 datum) corresponding to a Q₂₅ event.

On Design Sheet 146 of 194, for the “Intermediate Diaphragm Bolt Hole Location” detail in the upper right corner, eliminate the diaphragm locations shown at centerline of beam for the BTE135 and BTE145 beams.

The following is required on this contract:

NEBRASKA TAX EXEMPTION:

Reference is made to the Nebraska Revenue Act of 1967, and amendments thereto, which imposed a "Sales and Use Tax".

The following information to obtain tax exemption on purchased materials is provided for use in submitting proposals.

The prime contractor will be issued a "Purchasing Agent Appointment" signed by the Director-State Engineer of the Nebraska Department of Roads, and an "Exempt Sale Certificate". The "Exempt Sale Certificate" should be reproduced, completed, and furnished to vendors by the Contractor or Subcontractor when making purchases as a purchasing agent of the Department.

The "Exempt Sale Certificate" is to be used by the Contractor (or Subcontractor) when purchasing tangible personal property to be actually incorporated into the completed project. It does not apply to either of the following:

- (1) The purchase of materials to be used or consumed but not incorporated into the contract work, including but not limited to, form lumber, scaffolding, etc.
- (2) The purchase or rental of machines, equipment, or tools owned or leased by the Contractor and used in performing the contract work.

Attached U.S. Army Corps of Engineers Individual Permit.

Attached U.S. Coast Guard Permit.

Attached Nebraska levee access plan sheet.

Attached Iowa Levee access plan sheet.

Attached pre-bid meeting PowerPoint presentation.

Attached pre-bid meeting minutes.

Attached pre-bid meeting attendees list.



Iowa Department of Transportation

**SPECIAL PROVISIONS
FOR
EEO/AA REQUIREMENTS FOR CONTRACTOR AND SUBCONTRACTORS**

**Mills County
NHSX-534-1(68)--3H-65**

**Effective Date
July 19, 2011**

THE STANDARD SPECIFICATIONS, SERIES 2009, ARE AMENDED BY THE FOLLOWING MODIFICATIONS AND ADDITIONS. THESE ARE SPECIAL PROVISIONS AND THEY SHALL PREVAIL OVER THOSE PUBLISHED IN THE STANDARD SPECIFICATIONS.

090142.01 DESCRIPTION.

- A.** The Contractor and subcontractors awarded a subcontract in excess of \$10,000 for construction work under the contract shall comply with the requirements of Executive Order 11246 as amended, Section 503 of The Rehabilitation Act of 1973 as amended and the Vietnam Era Veterans' Readjustment Assistance Act of 1974 as amended (38 U.S.C. 4212).
- B.** The Contractor shall provide written notification to the District Director, Office of Federal Contract Compliance Programs (OFCCP), U.S. Dept. of Labor, Hruska Federal Courthouse, 111 S. 18th Plaza, Suite 2231, Omaha, NE 68102 - phone: (402) 221-3381, fax: (402) 221-3379, within 10 working days of the award of any subcontract in excess of \$10,000 for construction work under the contract. This notification shall include name, address and telephone number of the subcontractor, employer identification number (EIN), dollar amount of the subcontract, and the estimated starting and completion date.
- C.** The Contractor and each subcontractor covered by this Special Provision are required to complete a monthly Utilization Report. The report will include the total number of work hours broken out by construction trade and classification (supervisor, journey or apprentice), race and gender. The report will also include the number of employees within each trade and classification by race and gender. Each subcontractor will forward the completed monthly Utilization Report to the Contractor.
- D.** The Contractor and each subcontractor covered by this Special Provision shall prepare and submit a monthly Hire Activity Report including name, trade (including breakout by supervisor, journey or apprentice), race, gender, hire date, rehire date and referral source. If there were no hires during the month, a statement indicating this must be submitted. This report will be submitted with the monthly Utilization Report.

- E. The Contractor shall prepare a monthly consolidated report and a project cumulative report from the monthly Utilization Reports. These reports, including the required reports under Articles C and D, are to be received by OFCCP from the Contractor no later than the 20th day of the following month.
- F. Each Wednesday, the Contractor shall submit to OFCCP a list of the names of all subcontractors covered by this Special Provision who worked on the project during the prior week.
- G. The Contractor is required to appoint an EEO/Affirmative Action (EEO/AA) Manager for the project. Each subcontractor covered by this Special Provision is required to appoint an EEO/AA Project Coordinator. The EEO/AA Manager shall have overall responsibility for the monitoring of EEO/AA compliance by the Contractor and by all subcontractors covered by this Special Provision.
- H. The Contractor shall establish a Special Project Affirmative Action Oversight Committee (SPAAOC) comprised of OFCCP, and other representatives from state/local Civil Rights Enforcement/Development Agencies, labor unions, community constituents representing minority and female groups and other government and non-government agencies as needed. The first meeting will be held as soon as possible prior to the start of the project. Thereafter, the SPAAOC shall meet periodically throughout the course of the contract to discuss EEO/AA issues.
- I. The designated EEO representatives of the Contractor and each subcontractor covered by this Special Provision must attend a technical assistance seminar sponsored by OFCCP to understand their obligations under these programs. If a contractor's EEO representative has attended an OFCCP technical assistance seminar during the previous 12 calendar months, they will be exempt from this requirement.
- J. The EEO/AA goals (good faith effort) for this contract are 5.3% of total work force hours by trade for Minorities and 6.9% of total work force hours by trade for Females.

090142.02 METHOD OF MEASUREMENT AND BASIS OF PAYMENT.

The cost of complying with this special provision will not be measured for payment, but shall be considered incidental to other work on the project.

*** 005.0012 PROTECTION OF MIGRATORY BIRD NESTS ***

To protect migratory birds, do not conduct construction activities where active nests are present between the dates of April 1 and July 15, inclusive or until the birds have fledged and left the nest.

Active nests are nests containing eggs or young of migratory birds.

The contractor shall remove all non-active, existing migratory bird nests and monitor to prevent the establishment of active nests.

If evidence of migratory bird nesting is discovered after beginning work, or in the event that migratory birds nests become established, immediately stop work and notify the Engineer. The contractor will not be compensated for any delays or costs associated with the presence of an active nest on the project.



Iowa Department of Transportation

SUPPLEMENTAL SPECIFICATIONS FOR MOBILIZATION FOR EROSION CONTROL

Effective Date
July 20, 2010

THE STANDARD SPECIFICATIONS, SERIES 2009, ARE AMENDED BY THE FOLLOWING MODIFICATIONS AND ADDITIONS. THESE ARE SUPPLEMENTAL SPECIFICATIONS AND THEY PREVAIL OVER THOSE PUBLISHED IN THE STANDARD SPECIFICATIONS.

09011.01 MOBILIZATIONS, EROSION CONTROL.

- A. Prior to the Preconstruction Conference, submit for approval an Erosion Control Implementation Plan (ECIP) for accomplishing all aspects of the erosion control work. In the ECIP include a description of additions or modifications to the project contract. Do not implement deviations from the approved ECIP without the Engineer's written permission. During the course of the project contract, review the ECIP with the Engineer and modify as needed.
- B. In the ECIP, include stages for erosion control work to address the Contractor's timetable and sequence for major activities on the project contract, including the number of Mobilizations, Erosion Control, anticipated for the project contract. In the consideration of the number of mobilizations consider, as a minimum:
 - Clearing and grubbing activities,
 - The number of earthwork balances for the project contract,
 - Sensitive areas requiring special consideration,
 - Anticipated suspension of work,
 - Compliance with the Pollution Prevention Plan (PPP), and
 - Separate mobilizations needed for different crews performing work such as silt fence, seeding, or ditch checks (however, multiple mobilizations will not be paid for a single crew performing different items of work that require the same equipment to be mobilized).
- C. Only one mobilization will be paid for each stage of work described in the ECIP. Within the scope of work defined for each single mobilization described in the ECIP, additional movement due to weather delays or at the option of the Contractor will not be counted as a mobilization.
- D. Additional mobilizations not outlined in the ECIP must be approved by the Engineer. Only one mobilization will be paid for each stage of additional work approved by the Engineer.
- E. Mobilize with sufficient labor, equipment, and materials to perform the erosion control included in the ECIP. If the Contractor fails to mobilize when erosion control work is needed to comply with the ECIP and the PPP, the Engineer will, by written order, direct the Contractor to mobilize within 72 hours of a written order.
- F. If the Contractor fails to mobilize within such time period, a deduction of \$750.00 per calendar day will be made from money due under the contract, except when the Engineer extends such time period.

- G.** Mobilizations, Erosion Control is not to include work provided under the item of Mobilizations, Emergency Erosion Control.

09011.02 MOBILIZATIONS, EMERGENCY EROSION CONTROL.

An emergency will be considered to be a sudden occurrence of a serious and urgent nature which requires work not included in the contract or is beyond normal maintenance of erosion control items and the mobilizations included in the erosion control implementation plan. Emergency work requires immediate mobilization and movement of necessary labor, equipment, and materials to the emergency site, followed by the immediate installation of temporary erosion control measures.

- A.** Mobilize with sufficient labor, equipment, and materials on the job site within eight hours of the Engineer's written order to install temporary erosion control items on an emergency basis. The Engineer's written order will include a description of the required work. Only one mobilization will be paid for the work described in the written order.
- B.** If the Contractor fails to mobilize within eight hours of the written order, a deduction of \$1500.00 per calendar day will be made from money due under the contract, except when the Engineer extends such time period.

09011.03 METHOD OF MEASUREMENT.

- A.** Mobilizations, Erosion Control: units. The quantity measured for payment will be the number of such mobilizations in the approved ECIP and acceptably performed, as well as all additional mobilizations approved by the Engineer and acceptably performed.
- B.** Mobilizations, Emergency Erosion Control: units. The quantity measured for payment will be the number of such mobilizations directed in writing by the Engineer and acceptably performed.

09011.04 BASIS OF PAYMENT.

Payment for Mobilizations, Erosion Control, and Mobilizations, Emergency Erosion Control will be according to Article 1109.03, B, 1, of the Standard Specifications, at the unit prices stipulated in this specification. Mobilization for Erosion Control costs are not included as part of the contract item for "Mobilization" described in Section 2533 of the Standard Specification.

A. Mobilizations, Erosion Control.

1. The quantity will be paid for at the unit price of \$500.00 each for Mobilizations, Erosion Control, which price is full compensation for the staged movement of labor, equipment, and materials; and for all labor, tools, equipment, and incidentals necessary to complete the movement.
2. Individual erosion control items provided for in the contract, and acceptably furnished and placed under the item of Mobilizations, Erosion Control, will be paid for separately at the contract unit price for the items.

B. Mobilizations, Emergency Erosion Control.

1. The quantity will be paid for at the unit price of \$1000 each for Mobilizations, Emergency Erosion Control, which price is full compensation for movement of labor, equipment and materials; and for all labor, tools, equipment, and incidentals necessary to complete the movement.
2. Individual temporary erosion control items provided for in the contract, and acceptably furnished and placed under the item of Mobilizations, Emergency Erosion Control, will be paid for separately at the contract unit price for the items.

AMENDMENT to the IOWA 2011 DIRECTORY of DBEs
The 2011 Directory of Certified Disadvantaged Business Enterprises
is amended by the following changes.

New changes to the amendment are in the shaded areas.

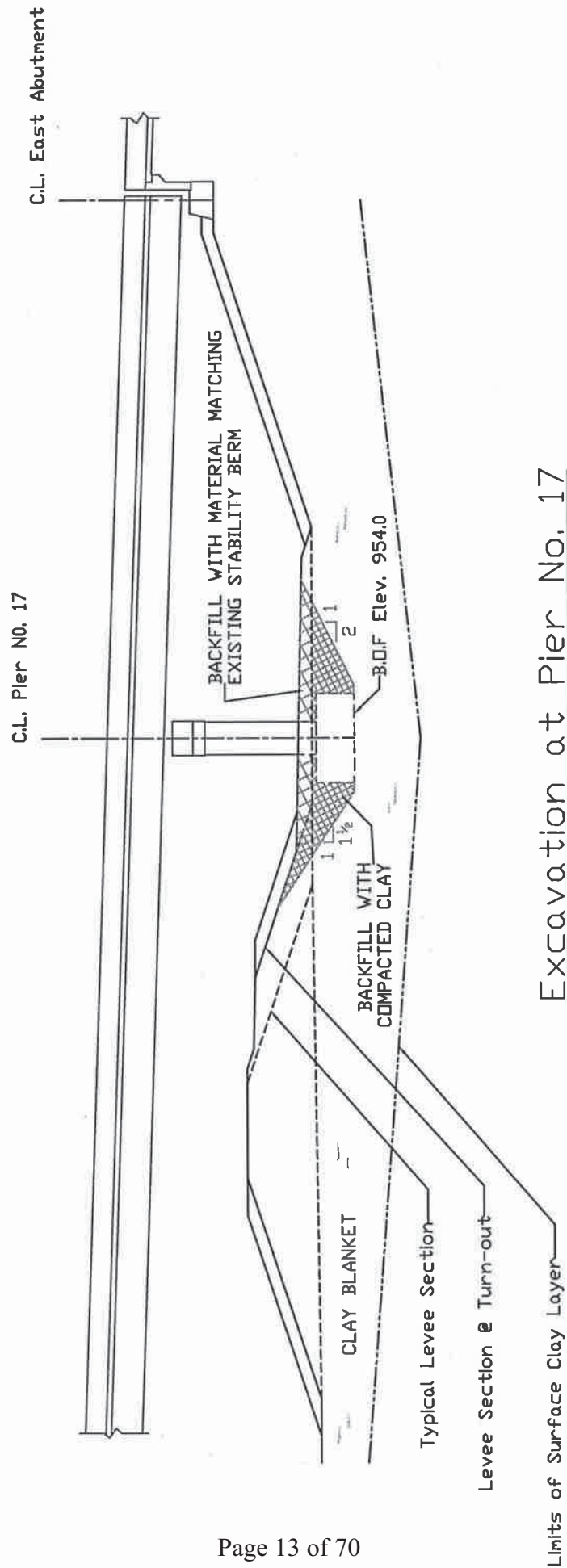
Add new Certified W/DBEs:	<p>Carlo Lachmansingh Sales, Inc. Carl Lachmansingh 4801 4th Avenue South Minneapolis, MN 55419 612-827-2211 Fax: 612-821-0161 E-mail: carlo@clsalesinc.com Web Site: www.clsalesinc.com Work Type: Supplier of Electrical Apparatus and Equipment: Electrical Apparatus and Equipment Wiring Supplies and Related Equipment Merchant Wholesaler (NAICS Code 423610)</p>
	<p>Chenhall's Staffing Services, Inc. Robert T. Hickman 526 W. 2nd Street Davenport, IA 52801 563-386-3800 Fax: 563-386-3899 E-mail: bhickman@hr-er.com Web Site: www.chenhallstaffing.com Work Type: Employment Services: Full Service Recruitment, HR Consulting and Payroll Transfer Firm (NAICS Code 561310); Employment Services and Temporary Help Services (NAICS Code 541612); Human Resources and Executive Search Consulting Services (NAICS Code 541214); and Payroll Services</p>
	<p>Classic Window Treatments Susan Genz 9317 Old Orchard Drive Norwalk, IA 50211 515-287-2426 Fax: 515-287-2426 E-mail: classicwindow@mchsi.com Web Site: www.classicwindow.net Work Type: Manufacturer: Professional Custom Drapery Fabrication, Made to Order Window Treatments and Bedding; Supplier/Reseller of Window Blinds and Shades</p>
	<p>Dieckman Trucking Megan L. Dieckman 1296 57th Street South Muscatine, IA 52761 563-506-0172 Fax: 563-264-8233 E-mail: dieckmantrucking@gmail.com Work Type: Trucking</p>

Add new Certified W/DBEs:	Flenker Land Architecture	Meg K. Flenker
	Consultants, LLC	
	29476 240th Avenue	
	Long Grove, IA 52756	
	563-225-2255/563-370-23236	Fax: 563-225-2254
	E-mail: wmkkm@netins.net	
	Work Type: Architecture: Landscape Architecture; Land Planning; Wetland Delineation;; Design, Monitoring & Permitting; Graphic Design; Storm Water Quality & Erosion Control Planning & Design	
	MAC Consulting, LLC	Julie Mattlin
	6368 Cook Road	
	Guilford, IN 47022	
	812-487-2547/513-616-1171	Fax: 812-487-2547
	E-Mail: jmattlin@macconsultingllc.com	
	Work Type: Administrative Management and General Management Consulting Services (NAICS Code: 541611)	
	Pinnacle Mapping Technologies, Inc.	Brenda R. King
	9084 Technology Drive, Suite 800	
	Fishers, IN 46038	
	317-585-2011	Fax: 317-585-2014
	E-mail: brking@pinnaclemapping.com	
	Web Site: www.pinnaclemapping.com	
	Work Type: Aerial Photography, Photogrammetric Mapping, Parcel Conversions, and Geographic Information Systems Services	
	Stokes Construction Company	Wallace Stokes
	2505 North 24th Street, Suite 101	
	Omaha, NE 68110	
	402-359-1506 Cell: 402-637-7898	Fax: 402-504-1889
	E-mail: jrwallace156@gmail.com	
	Work Type: Concrete (Driveways, Sidewalks, and Misc. Flatwork), Fencing, and Guardrail; Commercial and Residential Construction & Rehabilitation	

Remove From Directory:	Amy's Sign Design	
	EnReview Consulting	
	Erosion Runner Midwest, Inc.	
	JetBridge International, Inc.	
	Love's Enterprises, Inc.	
	Midwest Printing & Copy	
	Pauline Company, Inc.	
	Stokes Corporation	
	V Technologies	
	D. Wilson Consulting Group, LLC	
Other Changes:	A and B Contracting, LLC - Add Work Types: Concrete Sawing and Dowel Bar Drilling American Surveying & Engineering, P.C. - Remove all work types except for Construction Survey DeLong Construction, Inc. - Add Work Types: Erosion Control, Landscaping, and Mowing Paco Construction, LLC - Add Work Type: Milling Phoenix Corp. of the Quad Cities - Add Work Type: Concrete Barrier Rail	
Name, Address & Phone Changes:	Blackwell Construction Address: Use PO Box only P.O. Box 8172 Des Moines, IA 50301 Phone: 515-710-2544	Genova Technologies, Inc. a/k/a DEDE, Inc. Ownership Change: Dawn Ainger 100% Owner Name Change: Remove a/k/a DEDE, Inc.
	LT Leon Associates Address Change: 500 East Locust St., Ste. 201 Des Moines, IA 50309	Martinez Geospatial, Inc. Remove Texas Office information
	Pizano Trucking Fax # Change: 309-523-3435	Name Change from Our Tara Nursery, Garden Center, & Tree Service to: Tara Erosion Control, LLC
	Tallgrass Historians L.C. Add Mailing Address: P.O. Box 1975 Iowa City, IA 52244	TransSolutions, LLC Remove P.O. Box
	Trekk Design Group, LLC Address Correction: 1441 East 104 th St., Suite 105	Universal Concrete, Ltd. Street Address Correction: 1400 E 18 th Street

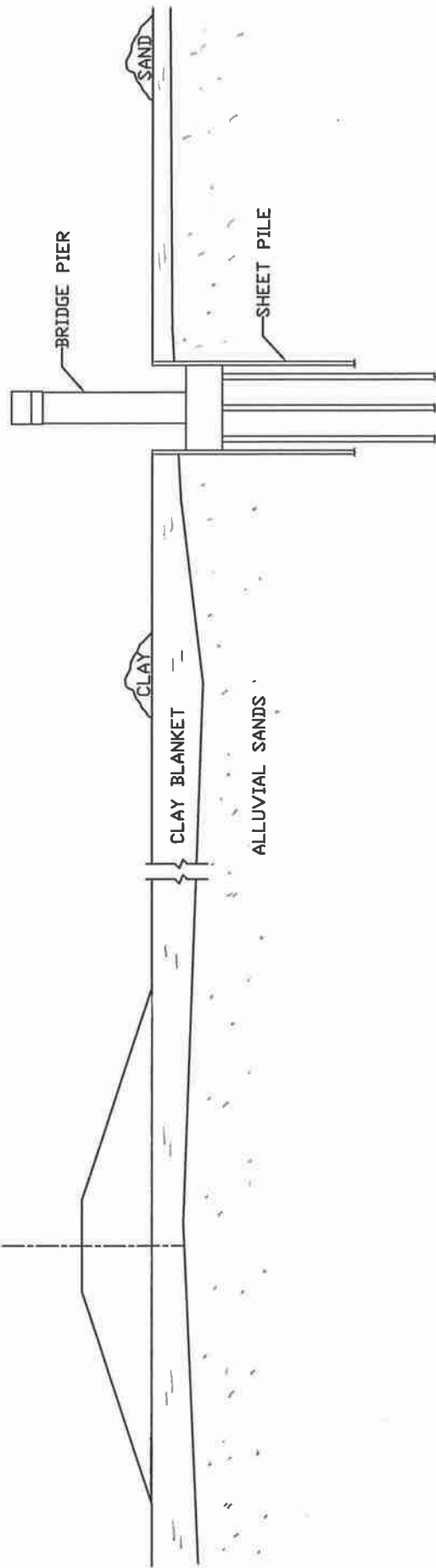
CLAY BLANKET DETAILS

1. THE WEST AND EAST ABUTMENTS AS WELL AS PIER NO. 1, 2, 3, 4, 14, 15, 16 AND 17 FALL WITHIN THE CRITICAL ZONES OF THE LEVEES, WHICH ARE DEFINED AS THE AREA SITUATED WITHIN 300-FOOT RIVERSIDE AND 500-FOOT LANDSIDE OF THE CENTERLINE OF THE LEVEES. THE VARIOUS TYPES OF SOILS (CLAY, SAND) THAT ARE ENCOUNTERED IN THE SITE EXCAVATION FOR THESE FOUNDATIONS SHALL BE PLACED IN SEPARATE STOCKPILES. DURING THE BACKFILLING OF THE EXCAVATIONS, THE SOILS SHALL BE PLACED AS THEY WERE ENCOUNTERED IN THE INITIAL EXCAVATIONS TO RESTORE THE ORIGINAL SOIL PROFILE AND THE CONTINUITY OF THE CLAY BLANKET.
2. DUE TO THE DEPTH TO THE BOTTOM OF THE CLAY BLANKET, SHEETPILE SUPPORT OF FOUNDATION EXCAVATIONS WILL NOT BE ALLOWED AT THE WEST ABUTMENT, EAST ABUTMENT, PIER NO. 1 OR PIER NO. 17 AND THESE FOUNDATION LOCATIONS WILL REQUIRE OPEN CUT. IF THE CONTRACTOR ELECTS TO USE SHEET PILES FOR TEMPORARY EXCAVATION SUPPORT AT PIER NO. 2, 3, 4, 14, 15 AND 16, THE SHEET PILES SHALL BE COMPLETELY EXTRACTED UPON COMPLETION OF THE FOUNDATIONS. THE UPPER LAYER OF CLAY SHALL BE EXCAVATED AND RECOMPACTED TO THE LIMITS SHOWN.
3. DURING CLAY BLANKET REPAIR OPERATIONS FOR INDIVIDUAL PIERS, THE CONTRACTOR SHALL BE RESPONSIBLE FOR KEEPING GROUNDWATER LEVELS A MINIMUM OF 2 FEET BELOW THE BASE OF THE CLAY BLANKET EXCAVATION AT ALL TIMES TO ALLOW FOR PROPER COMPACTION OF THE CLAY BLANKET. A SUFFICIENT NUMBER OF SUMPS, DEWATERING WELLS AND OBSERVATION WELLS SHALL BE INSTALLED AND MONITORED THROUGHOUT THE CLAY BLANKET REPAIR OPERATIONS.
4. ALL COSTS ASSOCIATED WITH THE STORAGE AND RECOMPACTION OF THE EXCAVATED MATERIAL SHALL BE INCIDENTAL TO THE ITEM "EXCAVATE AND DEWATER" FOR PIERS 2-16 OR TO THE ITEM "EXCAVATION, CLASS 20" FOR THE WEST ABUTMENT, EAST ABUTMENT, PIER NO. 1 AND PIER NO. 17.

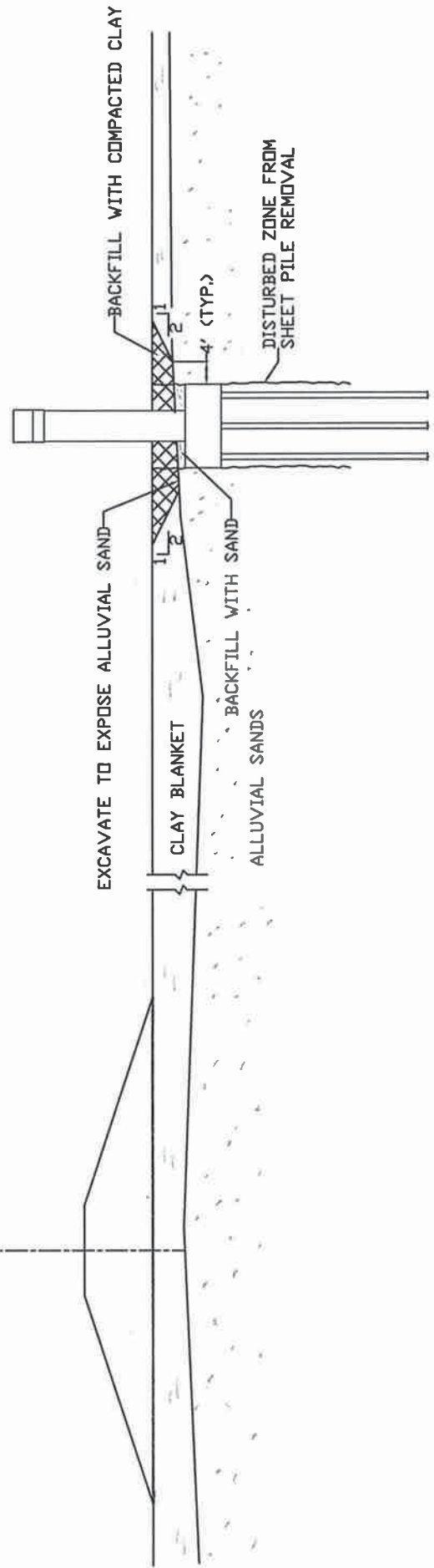


Excavation at Pier No. 17

CL LEVEE



CL LEVEE



EXCAVATION /BACKFILL AT PIERS IN CRITICAL ZONE WITH SHEET PILE SUPPORT

IOWA DEPARTMENT OF TRANSPORTATION

TO OFFICE: District 4
ATTENTION: George Feazell
FROM: Terri Abbett
OFFICE: Location and Environment – Water Resources Section
SUBJECT: Clean Water Act Section 404 Permit

DATE: May 20, 2010
REF.: Mills County
NHSX-034-1(63)—3H-65
PIN: 96-65-034-020

Please find enclosed the Department of Army Section 404 Permit authorizing the work in conjunction with the construction of US 34 and the Bellevue Bridge.

PERMIT INFORMATION

404 Permit Number: 2003-10140-WEH
Permit Type: Individual Permit
Effective Date: April 23, 2010
Expiration Date: March 31, 2013
Standard Notes for Plans: 281-1, 213-1
General Specifications: 1105.14, 2547

PERMIT CONDITIONS

General and Special Conditions of the Permit:

General Conditions specific to this project are in the attached permit on page 2, followed by Special Conditions on pages 2-5. Iowa Department of Natural Resources' (IDNR) 401 Water Quality Permit Conditions can be found in Attachment 2. Best management practices (BMP's) are listed in Attachment 3.

Please note the following Special Conditions—

Construction/RCE: Special conditions 2, 5, 9, 11, 12, and 13. Iowa DNR conditions 2, 3, 4, 5, 6, 7, 8, 9, 10, 12, 13, 14, 15, and 20. BMP's – all.

Design/Roadside Development/Bridge: Special conditions 4, 5, 11, 12, 13. Iowa DNR conditions 2, 3, 4, 5, 6, 7, 8, 9, 10, 11, 12, 13, 14, 15, and 20. BMP's – all. For many of the DNR conditions and BMP's, DOT already has standard notes or specifications addressing the issues. For others, it would be appropriate to include notes or reference information in the plans.

Contracts: Office of Contracts should consider the following date restrictions when determining start/finish and working days. Tree clearing is prohibited between the dates of December 15 through February 20. Work in the channel of the Missouri River will only occur from July 1 through January 31. Iowa DNR conditions 10, 15, and possibly 16 are applicable.

Because of the environmental sensitivity on this project, we recommend insertion of the actual permit into the contract documents.

Native Grass Seeding: Must be included for all disturbed areas.

Temporary Stream Crossings: To facilitate construction of bridge piers 5 and 6, temporary construction access will be required in the Missouri River. These temporary access measures will include barges, temporary slips, temporary work pads and temporary cofferdams.

Because the bridge girders will be constructed in segments, temporary supports (falsework) may be required. These supports would consist of temporary piers necessary to support girder segments prior to final assembly. All falsework will be removed from the Missouri River following girder assembly. All temporary fills shall be completely removed to an upland, non-wetland site and the area restored to pre-project conditions within 30 days of the end of their use.

Dredging: Dredging is authorized for this project. All dredging is subject to the following conditions:

- If dredging is needed around the temporary slips and the discharge will be placed back into the River, the Corps shall be notified of the location of dredging and amount to be dredged.
- If dredged material is to be used to construct temporary structures, the dredged material must first be tested and found to contain less than 5% fines that could pass through a #200 sieve. The material must be placed in such a way as to prevent its washing downstream.
- If hydraulic dredging is to be done the IDNR requires a modified elutriate test be performed before dredging is started.
- If dredged materials will be deposited on the shore before being hauled away, a silt fence, staked straw bales, or low berms will be required to prevent sediments from flowing back into the river.
- Dredged materials, with the exception of that authorized in the 404 Permit documents, will be placed on an upland, non-wetland site.

MITIGATION INFORMATION

To compensate for the wetland impacts, DOT will buy 4.83 acres of emergent wetland credits and 1.78 acres of forested wetland credits at the G. William Coulthard Trust Mitigation Bank in Harrison County.

Wetland Mitigation Site:

The G. William Coulthard Trust Mitigation Bank - Township 78 North, Range 45 West, Sections 3 and 4 in Harrison County, Iowa.

Wetland Mitigation Site Ownership: G. William Coulthard Trust, Acreage and Habitat Services, LLC.

Mitigation Site Agreement: A purchase agreement with the G. William Coulthard Trust, Acreage and Habitat Services, LLC. was executed on March 5, 2010.

Mitigation Site Maintenance: The Bank is managed by Thien Farm Management, Inc. No management or maintenance by DOT is necessary at this site.

George Feazell
Page 3
May 20, 2010

Please notify me immediately should the road design change or should wetland-related issues arise. Also notify me when the project work is complete. If there are any questions, please contact me by email at terri.abbett@dot.iowa.gov or by phone at 515-233-7748.

TA:sm

cc: M. J. Dillavou (Highway Division)
M. A. Swenson (Highway Division)
M. J. Kennerly (Design)
D. E. Ohman (Design)
N. L. McDonald (Bridges and Structures)
G. A. Novey (Bridges and Structures)
J. M. Smythe (Construction)
J. W. Smith (Contracts)
R. Bierbaum (Contracts)
M. Sankey (ROW)
J. P. Rost (Location and Environment)
R. A. Boydston (Location and Environment)
S. Larson (Location and Environment)
S. C. Marler (Location and Environment)
J. Selmer (District 4)
D. Stevens (District 4)
G. Feazell (District 4)
O. Lechnowsky (District 4)
M. LaPietra (Federal Highway Administration)



DEPARTMENT OF THE ARMY
CORPS OF ENGINEERS, OMAHA DISTRICT
NEBRASKA REGULATORY OFFICE - WEHRSPANN
8901 SOUTH 154TH STREET, SUITE 1
OMAHA, NEBRASKA 68138-3621

<https://www.nwo.usace.army.mil/html/od-rne/NEhome.html>

April 23, 2010

RECEIVED
APR 26 2010
OFFICE OF LOCATION & ENVIRONMENT

Mr. Jim Rost
Iowa Department of Transportation
IDOT Office of Location and Environment
800 Lincoln Way
Ames, Iowa 50010

Mr. Tim Weander
Nebraska Department of Roads
District 2 Engineer
4425 S. 108th Street
Omaha, Nebraska 68145

RE: 2003-10140-WEH—US-34 Bellevue Bridge

Dear Mr. Rost and Mr. Weander:

Enclosed is a Department of the Army Permit, Number 2003-10140-WEH. This project involves US-34 and construction of Bellevue Bridge. The project is located in Sections 7, 8, 17, and 18, Township 72 North, Range 43 West, and Sections 2, 11, 12, 13, and 14, Township 72 North, Range 44 West, Mills County Iowa. The project is located in Section 19, and 30, Township 13 North, Range 14 East, and Sections 23 and 24, Township 13 North, Range 13 East, Sarpy County, Nebraska. The bridge crossing the Missouri River is located at river mile 595.9.

Please note the special condition(s) on pages 2-5 of the permit.

The attached compliance certification form must be signed and returned to this office upon completion of the authorized work. A compliance inspection will be scheduled soon thereafter.

Should you, at any time, become aware that either an endangered and/or threatened species exists within the project area, you must immediately notify this office. In addition, you are responsible for all work accomplished in accordance with the terms and conditions of this permit. If a contractor or other authorized representative will be performing the work authorized by this permit on your behalf, we strongly recommend that they be provided a copy of this letter and the permit so that they are aware of the limitations of the permit. Any activity which fails to comply with all the terms and conditions of the permit will be considered unauthorized and subject to appropriate enforcement action.

If you have any questions regarding this permit, please write to the above address or call Matt Wray at (402) 896-0896 and refer to the above permit number.

Sincerely,


John L. Moesch
Nebraska State Program Manager

Enclosure

Copy Furnished:
NDEQ (Terry Hickman)
IDNR (Christine Schwake)
USACE-Rock Island
EPA Region VII (Eliodora Chamberlain)

DEPARTMENT OF THE ARMY PERMIT

Permittee: **Iowa Department of Transportation & Nebraska Department of Roads (US-34 Bellevue Bridge)**

Permit No.: **2003-10140-WEH**

Issuing Office: **WEHRSPANN REGULATORY OFFICE, OMAHA DISTRICT, U.S. CORPS OF ENGINEERS**

NOTE: The term "you" and its derivatives, as used in this permit, means the permittee or any future transferee. The term "this office" refers to the appropriate district or division office of the Corps of Engineers having jurisdiction over the permitted activity or the appropriate official of that office acting under the authority of the commanding officer.

You are authorized to perform work in accordance with the terms and conditions specified below.

Project Description: The western end of the project begins at the east end of the US-75 interchange with the relocated Platteview Road that is proposed as part of the NDOR US-75 Plattsmouth to Bellevue project. Four lanes extend eastward from the interchange, with a four-lane bridge across the Union Pacific Railroad and Burlington Northern Santa Fe Railway rail lines. The four lanes will continue east/southeast across the Missouri River. The Missouri River crossing includes a bridge that begins west of the U.S. Army Corps of Engineers (USACE) flood control levee on the Nebraska bank and continues across the river to the east side of the USACE flood control levee on the Iowa bank. The bridge layout includes a four-span Nebraska approach, three main spans over the Missouri River, and a 10-span Iowa approach. The span above navigation channel within the Missouri River will provide a minimum of 500 feet of horizontal clearance and 52 feet of vertical clearance. The pier layout for the bridge was developed in coordination with the United States Coast Guard (USCG) to minimize navigation impacts.

East of the Missouri River crossing, the alignment curves to the south and then to the east to the northern US-34 interchange with I-29 (the Glenwood exit). The project includes widening the existing US-34 from a two-lane roadway to a four-lane divided roadway through the existing interchange with I-29 (including the replacement of the existing diamond interchange with a partial cloverleaf interchange) to connect with the four-lane section of US-34 east of I-29. This proposed construction will impact 9.08 acres of wetlands (3.22 acres of PEMA/C and 0.89 acres of PFOA in Iowa, 4.97 acres of Riverine Floodplain PEMA/C in Nebraska).

Temporary Construction Access

Bridge piers 5 and 6 are proposed within the Missouri River channel. To facilitate construction of these piers, temporary construction access will be required in the Missouri River (all other piers will be constructed using conventional construction techniques). Temporary access measures would include an appropriate combination of barges, temporary slips, temporary work pads (located above the ordinary high water mark [OHWM]), and temporary cofferdams. The project does not involve construction of a causeway in the Missouri River. Anticipated accommodations for temporary construction access specific to piers 5 and 6 are as follows:

- Pier 5 – Due to the proximity of pier 5 to the Nebraska bank of the Missouri River all construction activities may be accomplished from the Nebraska bank; however, because barges will already be mobilized at the Project (for construction of pier 6, described below), the selected contractor may work from a barge placed near the Nebraska bank. A temporary cofferdam will also be required to facilitate pier foundation construction.
- Pier 6 – Barges will be necessary to construct pier 6 and its associated foundation due to its location in the channel. Additionally, a temporary cofferdam will be constructed surrounding pier 6 to facilitate construction.

Additionally, efforts to minimize pier placement in the navigational channel of the Missouri River have resulted in long bridge spans and associated girders. The substantial girder length requires the girders be constructed in segments; therefore, temporary supports (falsework) may be required. These supports would essentially consist of temporary piers necessary to support girder segments prior to final assembly. All falsework will be promptly removed from the Missouri River following final girder assembly.

- Attachments:
- 1/ Project Location Map
 - 2/ Water Quality Certifications
 - 3/ BMP's
 - 4/ Compensatory Mitigation Plan
 - 5/ Recommended Procedures for Compliance with Migratory Bird Treaty Act

Project Location:

The project is located in Sections 7, 8, 17, and 18, Township 72 North, Range 43 West, and Sections 2, 11, 12, 13, and 14, Township 72 North, Range 44 West, Mills County Iowa. The project is located in Section 19, and 30, Township 13 North, Range 14 East, and Sections 23 and 24, Township 13 North, Range 13 East, Sarpy County, Nebraska. The bridge crossing the Missouri River is located at river mile 595.9.

Permit Conditions:

General Conditions:

1. The time limit for completing the work authorized ends on **March 31, 2013**. If you find that you need more time to complete the authorized activity, submit your request for a time extension to this office for consideration at least one month before the above date is reached.
2. You must maintain the activity authorized by this permit in good condition and in conformance with the terms and conditions of this permit. You are not relieved of this requirement if you abandon the permitted activity, although you may make a good faith transfer to a third party in compliance with General Condition 4 below. Should you wish to cease to maintain the authorized activity or should you desire to abandon it without a good faith transfer, you must obtain a modification of this permit from this office, which may require restoration of the area. ENG Form 1721,
3. If you discover any previously unknown historic or archeological remains while accomplishing the activity authorized by this permit, you must immediately notify this office of what you have found. We will initiate the Federal and state coordination required to determine if the remains warrant a recovery effort or if the site is eligible for listing in the National Register of Historic Places.
4. If you sell the property associated with this permit, you must obtain the signature of the new owner in the space provided and forward a copy of the permit to this office to validate the transfer of this authorization.
5. If a conditioned water quality certification has been issued for your project, you must comply with the conditions specified in the certification as special conditions to this permit. For your convenience, a copy of the certification is attached if it contains such conditions.
6. You must allow representatives from this office to inspect the authorized activity at any time deemed necessary to ensure that it is being or has been accomplished in accordance with the terms and conditions of your permit.
7. The list of BMP's attached (attachment 3) shall be adhered to the maximum extent possible for this authorization to remain valid.

Special Conditions:

- 1) **After a detailed and careful review of all of the conditions contained in this permit, the permittee does acknowledge that, although said conditions were required by the Corps of Engineers, nonetheless, the permittee agreed to those conditions voluntarily to facilitate issuance of the permit and the permittee will comply fully with all the terms of the permit conditions.**
- 2) **Prior to the commencement of construction activities the following shall be provided to the above Regulatory Office address: construction start date, project manager's or point of contact's name and the project manager's or point of contact's phone number.**

- 3) This project shall be constructed in accordance with project plans received on July 10, 2009 and September 14, 2009. If project plans change, the USACE shall be notified with changes and any additional waters of the United States impacts that may occur due to the change.
- 4) Clearing of vegetation shall be limited to that which is absolutely necessary for construction of the project. All areas disturbed by construction shall be revegetated to appropriate perennial, native grasses and forbs and maintained in this condition. The disturbed areas shall be reseeded concurrent with the project or immediately upon completion. Revegetation shall be acceptable when ground cover of desirable species reaches 75%.
- 5) Concurrently with construction, silt curtains and other sediment control measures will be employed as needed to protect waters of the U.S. Upon completion of the project, uplands adjacent to wetland and channel crossings, and relocated channels must be seeded with a native upland seed mixture by September 15. Reed Canary Grass (*Phalaris arundinacea*), Purple Loosestrife (*Lythrum salicaria*), and Smooth Brome (*Bromus inermis*) are NOT appropriate choices of vegetation. If this seeding cannot be accomplished by September 15 erosion blanket must then be placed on the disturbed slopes adjacent to wetland and channel crossings and relocated channels. The erosion blanket will remain in place until native upland vegetation is established. Disturbed areas adjacent to wetland and channel crossing areas are not to remain bare through the fall, winter and spring months.
- 6) The Section 401 Water Quality Certification from Iowa Department of Natural Resources issued February 2, 2010 shall be adhered to for this authorization to remain valid.
- 7) The Section 401 Water Quality Certification from Nebraska Department of Environmental Quality issued March 4, 2010 shall be adhered to for this authorization to remain valid.
- 8) A survey for active bald eagle nests will be completed 60 to 90 days before construction of the project if construction is planned to occur between February 15 and July 15. If active nest(s) are found within 0.5 mile or line of sight of the project, all construction activities within 0.5 mile or line of sight of the nest would cease and FHWA would consult with USFWS.
- 9) Any barges used for construction activities, shall be inspected for the presence of zebra mussels prior to placing the barges into the Missouri River. Barges shall be completely out of the water for 10 days with all compartments opened that could potentially contain water and therefore harbor adult, larval or juvenile zebra mussel. This will ensure proper drying of the barge(s) and reduction of potential infestation. If the barge is obtained from a local source, United States Fish and Wildlife Service, Nebraska Game and Parks Commission and Iowa Department of Natural Resources staff must still be contacted to discuss previous locations at which the barge has been used.
- 10) The proposed project is subject to regulations of the Migratory Bird Treaty Act (MBTA). Under the MBTA (16 U.S.C. 703-712: Ch. 128 as amended), construction activities in grassland, wetland, stream, and woodland habitats, and those that occur on bridges (e.g., which may affect swallow nests on bridge girders) that would otherwise result in the taking of migratory birds, eggs, young, and/or active nests should be avoided. Although the provisions of MBTA are applicable year-round, most migratory bird nesting activity in Nebraska occurs during the period of April 1 to July 15. However, some migratory birds are known to nest outside of the aforementioned primary nesting season period. For example, raptors can be expected to nest in woodland habitats during February 1 through July 15, whereas sedge wrens which occur in some wetland habitats normally nest from July 15 to September 10. If the proposed project is planned to occur during the primary nesting season or at any other time that may result in the take of nesting migratory birds, NDOR and IDOT should refer to the Recommended Procedures for Compliance With the Migratory Bird Treaty Act document that is attached (See Attachment 11 on attached CD).
- 11) Removal and replacement of any revetment stone placed as part of the Navigation and Banks Stabilization Project should yield a structure with no significant change in gradation. Any damaged stone shall be replaced with new stone to ensure proper gradation. If the revetment opening is much greater than ten feet, or if stone fracturing appears severe, the applicant shall obtain sound replacement stone.

- 12) A plan for all temporary construction needed shall be submitted to and approved by the USACE prior to installation. The plan must include but is not limited to the location identified on an aerial photo, the dimensions, construction methods and duration of use.
- 13) Temporary construction in the Missouri River shall include an appropriate combination of barges, temporary slips, temporary supports (falsework), temporary work pads (located above the OHW), and temporary cofferdams. An elevated earthen work platform (causeway) shall not be used for temporary construction. The USACE shall be notified when the temporary work is constructed and removed from the river. If dredging is needed around the temporary slips to convey barges and the discharge will be placed back into the Missouri River, the USACE shall be notified of the location of dredging, amount to be dredged, and any required Section 401 water quality testing prior to any discharge of dredged material. All temporary construction required shall be removed from the Missouri River in its entirety once it is no longer needed for construction of the project.
- 14) Approximately, 9.08 acres of wetlands (3.22 acres of PEMA/C and 0.89 acres of PFOA in Iowa, 4.97 acres of Riverine Floodplain PEMA/C in Nebraska) will be impacted by this project.
 - a. Therefore, Iowa DOT will offset 4.11 acres (3.22 acres of PEMA/C and 0.89 acres of PFOA) of unavoidable wetland impact through the purchase of 6.61 ($4.83+1.78=6.61$) certified wetland mitigation credits from the G. William Coulthard Trust Wetland Mitigation Bank (Bank) at a mitigation ratio of 1.5 credit purchase per 1.0 acre of emergent wetland impact ($1.5:(3.22*1.5=4.83)$), and a mitigation ratio of 2.0 credit purchase per 1.0 acre of forested wetland impact ($2:(0.89*2=1.78)$). The Bank is owned by G. William Coulthard Trust and Acreage and Habitat Services, LLC (Banker), managed by Thien Farm Management, Inc. (Manager), and was authorized by the Rock Island District Corps of Engineers under CEMVR-OD-P-2005-733. The Bank is located along Young's Ditch in Sections 3 and 4, Township 78 North, Range 45 West, Harrison County, Iowa. Both the Bank and the project are located in HUC 10230006: Missouri – Little Sioux (102300), Big Papillion – Mosquito (06). An updated wetland mitigation bank ledger and appropriate documentation shall be provided to the USACE to verify certificated credits where purchased prior to commencement of filling activities.
 - b. Therefore, NDOR will offset 4.97 acres of PEMA/C riverine floodplain wetland impacts through the construction of a compensatory wetland mitigation site at the Oreapolis Wetland Mitigation Site. The site would be constructed on an approximately 50-acre parcel in the northeast $\frac{1}{4}$ of the north $\frac{1}{2}$ of Section 1, Township 12 North, Range 13 East, in Cass County, Nebraska. NDOR at a minimum will construct through restored hydrology to approximately 9.94 acres of PEMA/C riverine floodplain wetlands. All wetlands restored on the site would be PEMA/C riverine floodplain wetlands. The Oreapolis wetland mitigation plan is located in attachment 10 on the attached CD. Should the mitigation fail to produce the type and level of compensation necessary, the permittee shall comply with the Corps' directives to provide the required mitigation. The Corps must be notified with documentation verifying the mitigation site was constructed and seeded by June 1, 2011. This documentation may include but is not limited to dates of construction and seeding, planting list, tags from seed bags, and receipts from seed and planting of the seed.
- 15) Buffer strips measuring 50-feet wide will consist of existing timber on the south side of the wetland, the existing stream and berms on the north side and a proposed mitigation site on the west side.
- 16) The mitigation plan submitted by NDOR on March 8, 2010 is approved by the USACE and shall be incorporated by reference into this permit. The Corps must be notified by documentation, verifying the mitigation site was constructed and seeded concurrently with any filling activities, no later than June 1, 2011.
- 17) The permittee shall be responsible for providing a complete copy of this permit document to each individual lot owner or lessee and any future lot or property owner that may be affected by the terms and conditions of this authorization. The permittee shall notify the Wehrspann Regulatory Office prior to any transfer of this authorization. The notification shall include the permit number (2003-10140-WEH), previous owner and future owner to ensure proper transfer of this authorization.

18) The conservation easement for the mitigation site and buffers must include the following use restrictions:

- a. There shall be no construction or placement of structures or mobile homes, fences, signs, billboards or other advertising material, or other structures, whether temporary or permanent, on the land.**
- b. There shall be no filling, draining, excavating, dredging, mining, drilling or removal of topsoil, loam, peat, sand, gravel, rock, minerals or other materials.**
- c. There shall be no building of roads or paths for vehicular or pedestrian travel or any change in the topography of the land.**
- d. There shall be no removal, destruction, or cutting of trees or plants, spraying with biocides, insecticides, or pesticides, grazing of animals, farming, tilling of soil, or other agricultural activity. Maintenance activities are acceptable upon approval from the Corps. Noxious weed control is allowed, but must be documented in monitoring.**
- e. There shall be no operation of all-terrain vehicles or any other type of motorized vehicle on the land, except for pre-existing access roads at the mitigation site. All-terrain vehicles may be used for maintenance and monitoring.**
- f. This Covenant of Dedication may be changed, modified or revoked only upon written approval of the District Engineer of the Omaha District of the U.S. Army Corps of Engineers. To be effective, such approval must be witnessed, authenticated, and recorded pursuant to the law of the State of Nebraska. This Covenant needs to be reviewed by the Corps of Engineers prior to signature to assure compliance with permit conditions.**

COE representative's initial _____

- g. This Covenant is made in perpetuity such that the present owner and its heirs and assigns forever shall be bound by the terms and conditions set forth herein.**

19) Monitoring reports of the Oreapolis Wetland Mitigation Site shall be submitted to the Wehrspann Regulatory Office to ensure the mitigation site is developing properly. The emergent wetland will be monitored for a minimum of five years. The mitigation site shall be delineated using the 1987 Corps of Engineers Wetland Delineation Manual. Besides the delineation information, the monitoring reports shall include, but are not limited to, the following:

- a) A set of as-built plans of the mitigation site which contains photo reference points and sampling locations, etc. marked on the plans. Representative photos, taken in the growing season, showing all areas of the mitigation site must be clearly marked on the plans. Due to the cyclic nature of wetlands, we recommend that photos be taken two or more times a year.**
- b) The monitoring reports shall be due December 1 of 2011, 2012, 2013, 2014 and 2015. Please contact the Wehrspann Regulatory Office if construction of the mitigation site is not completed by September 1, 2010, to ensure a proper monitoring schedule.**
- c) Should the mitigation fail to produce the type and level of compensation necessary at any time or after a period of five years, the permittee shall comply with the Corps' directives to provide the required mitigation. The permittee shall assume all liability for accomplishing corrective work should the Corps of Engineers determine that the compensatory mitigation has not been fully satisfactory. Remedial work may include, but is not limited to, regarding and/or replanting the site.**

Further Information:

1. Congressional Authorities: You have been authorized to undertake the activity described above pursuant to:

- ☐ Section 10 of the River and Harbors Act of 1899 (33 U.S.C. 403).
- ☒ Section 404 of the Clean Water Act (33 U.S.C. 1344).
- ☐ Section 103 of the Marine Protection, Research and Sanctuaries Act of 1972 (33 U.S.C. 1413).

() Section 103 of the Marine Protection, Research and Sanctuaries Act of 1972 (33 U.S.C. 1413).

2. Limits of this authorization.

- a. This permit does not obviate the need to obtain other Federal, state, tribal, or local authorizations required by law.
- b. This permit does not grant any property rights or exclusive privileges.
- c. This permit does not authorize any injury to the property or rights of others.
- d. This permit does not authorize interference with any existing or proposed Federal project.

3. Limits of Federal Liability. In issuing this permit, the Federal Government does not assume any liability for the following:

- a. Damages to the permitted project or uses thereof as a result of other permitted or unpermitted activities or from natural causes.
- b. Damages to the permitted project or uses thereof as a result of current or future activities undertaken by or on behalf of the United States in the public interest.
- c. Damages to persons, property, or to other permitted or unpermitted activities or structures caused by the activity authorized by this permit.
- d. Design or construction deficiencies associated with the permitted work.

Damage claims associated with any future modification, suspension, or revocation of this permit.

4. Reliance on Applicant's Data: The determination of this office that issuance of this permit is not contrary to the public interest was made in reliance on the information you provided.

5. Reevaluation of Permit Decision. This office may reevaluate its decision on this permit at any time circumstances warrant. Circumstances that could require a reevaluation include, but are not limited to, the following:

- a. You fail to comply with the terms and conditions of this permit.
- b. The information provided by you in support of your permit application proves to have been false, incomplete, or inaccurate (See 4 above).
- c. Significant new information surfaces which this office did not consider in reaching the original public interest decision.

Such a reevaluation may result in a determination that it is appropriate to use the suspension, modification, and revocation procedures contained in 33 CFR 325.7 or enforcement procedures such as those contained in 33 CFR 326.4 and 326.5. The referenced enforcement procedures provide for the issuance of an administrative order requiring you to comply with the terms and conditions of your permit and for the initiation of legal action where appropriate. You will be required to pay for any corrective measures ordered by this office, and if you fail to comply with such directive, this office may in certain situations (such as those specified in 33 CFR 209.170) accomplish the corrective measures by contract or otherwise and bill you for the cost.

6. Extensions. General condition 1 establishes a time limit for the completion of the activity authorized by this permit. Unless there are circumstances requiring either a prompt completion of the authorized activity or a reevaluation of the public interest decision, the Corps will normally give favorable consideration to a request for an extension of this time limit.

Your signature below, as permittee, indicates that you accept and agree to comply with the terms and conditions of this permit.

James Rost for IADOT 3/16/10
(PERMITTEE) (DATE)

Wally Wendt NSOR 4/22/10
(PERMITTEE) (DATE)

This permit becomes effective when the Federal official, designated to act for the Secretary of the Army, has signed below.

John Moeschen 4/23/10
(DISTRICT ENGINEER) (DATE)

Robert J. Ruch
Colonel, Corps of Engineers
District Engineer

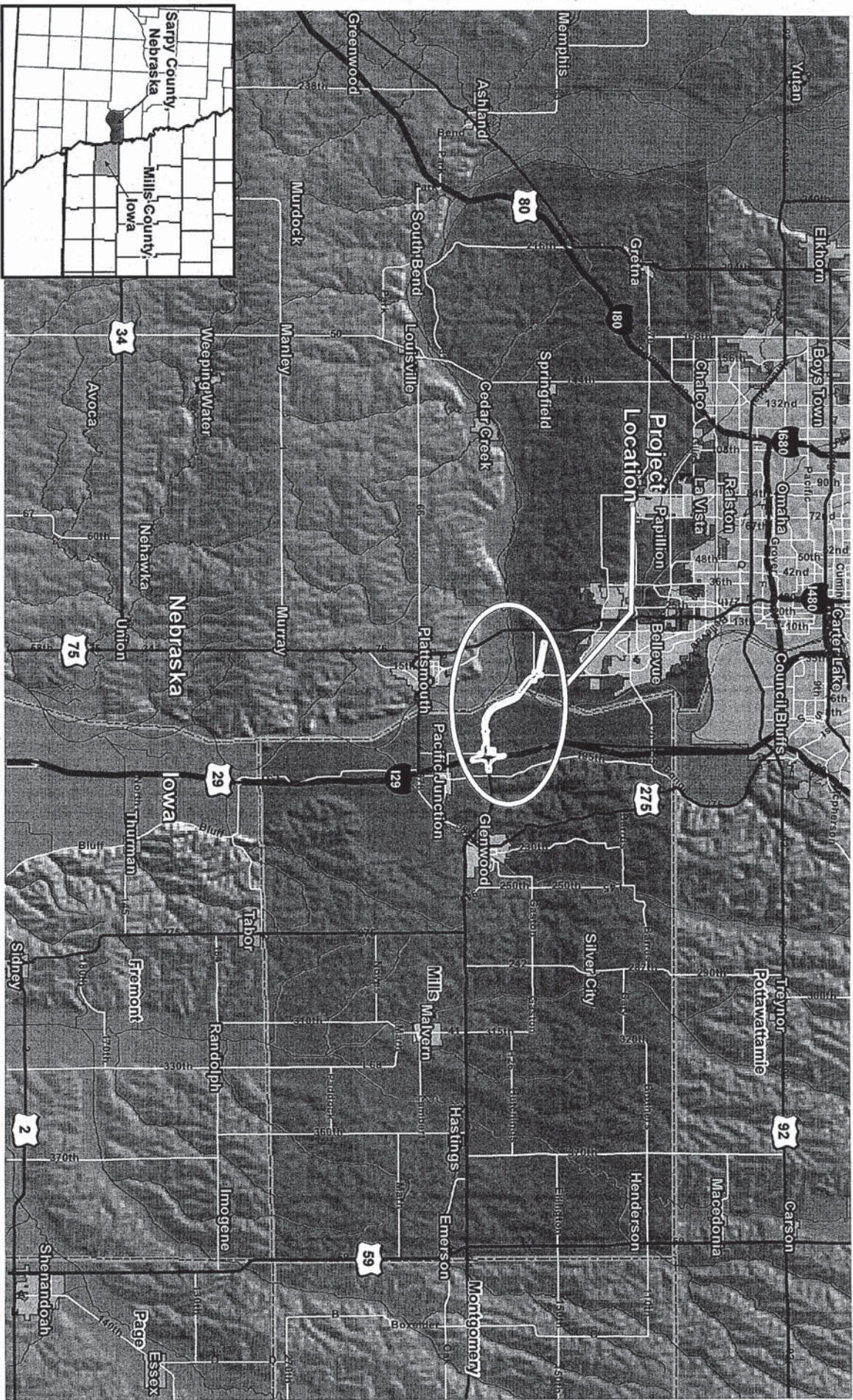
By:
John Moeschen
Nebraska State Program Manager

When the structures or work authorized by this permit are still in existence at the time the property is transferred, the terms and conditions of this permit will continue to be binding on the new owner(s) of the property. To validate the transfer of this permit and the associated liabilities associated with compliance with its terms and conditions, have the transferee sign and date below.

(TRANSFEREE)

(DATE)

IDR:OmahaS:\temp\Talbitzer\US34_ReAlignment\map_docs\mxd\Report_Figures_Aug08.tct



HDR

Project Location

U.S. Highway 34 - Bellevue Bridge
Mills County, Iowa and Sarpy County, Nebraska
Pre-Construction Notification



DATE
July 2009

FIGURE

1



Dave Heineman
Governor

STATE OF NEBRASKA

DEPARTMENT OF ENVIRONMENTAL QUALITY

Michael J. Linder

Director

Suite 400, The Atrium

1200 'N' Street

P.O. Box 98922

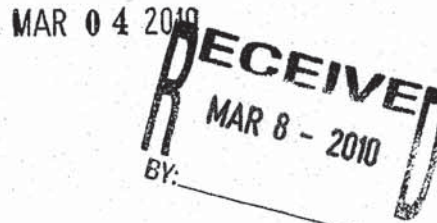
Lincoln, Nebraska 68509-8922

Phone (402) 471-2186

FAX (402) 471-2909

website: www.deq.state.ne.us

Tim Weander
Nebraska Department of Roads
4425 South 108th Street
Omaha, NE 68145



RE: State Water Quality Certification for Section 404 Application 2003-10140-WEH, Construct bridge across Missouri River at Highway 34, Sarpy County, NE.

Dear Mr. Weander:

We have reviewed the information received regarding the above-referenced application and feel the activity will comply with Section 401 of the Clean Water Act of 1977, as amended by the Water Quality Act of 1987, subject to meeting the following conditions:

Construction activities should employ controls to reduce the sediment concentration of any water returning to the stream or river. This includes re-vegetating the banks and maintaining this condition.

Wetland habitat lost due to the placement of fill shall be mitigated by restoring or creating equivalent in-kind wetland habitat at a minimum ratio of 1.5 restored or created acres for every 1.0 acre of affected area.

If the area of disturbance will be greater than 1.0 acre, we remind the applicant that a National Pollution Discharge Elimination System construction stormwater permit may be required under § 402 of the Clean Water Act.

We therefore, by this letter, provide Section 401 Water Quality Certification. This certification does not constitute authorization to conduct your project. It is a statement of compliance with Surface Water Quality Standards only, which is one requirement to gain authorization from the U.S. Army Corps of Engineers in the form of a Section 404 permit. If you have any questions, please feel free to call Terry Hickman on my staff, at (402) 471-2875.

Sincerely,

Marty Link
Associate Director,
Water Quality Division

cc: Matt Wray, US Army Corps of Engineers
John Cochnar, US Fish & Wildlife Service
Carey Grell, Nebraska Game & Parks Commission
Eliodora Chamberlain, US Environmental Protection Agency



STATE OF IOWA

CHESTER J. CULVER, GOVERNOR
PATTY JUDGE, LT. GOVERNOR

DEPARTMENT OF NATURAL RESOURCES
RICHARD A. LEOPOLD, DIRECTOR

February 2, 2010

Mr. James Rost
Iowa Department of Transportation
800 Lincolnway
Ames, IA 50010

Mr. Tim Weander
Nebraska Department of Roads
4425 S. 108th Street
Omaha, NE 68145

Dear Messrs. Rost and Weander:

After reviewing your request for an amended State 401 Water Quality Certification, the Iowa Department of Natural Resources (IDNR) has issued the enclosed amended Certification. Please read the attached conditions carefully before beginning work on the project.

A copy of this Certification has been forwarded to the office of the Army Corps of Engineers as indicated below. You are advised to contact that office upon receipt of this certification.

A copy of this Certification has also been forwarded to the U.S. Coast Guard as indicated below. The IDNR is in support of a US Coast Guard bridge permit at Missouri River mile 595.9.

If you have any questions or comments about the certification or any conditions contained therein, please contact me at the address shown below or call (515) 281-6615.

Sincerely,

Christine M. Schwake

Christine M. Schwake
Environmental Specialist

cc: Mr. Matt Wray, Nebraska Regulatory Office – Wehrspann, 8901 South 154th Street, Suite 1, Omaha, NE 68138-3621

Mr. David Orzechowski, U.S. Coast Guard Commander (OBR), 8th Coast Guard District, Room 2, 107F, 1222 Spruce Street, St. Louis, MO 63103

502 EAST 9th STREET / DES MOINES, IOWA 50319-0034
515-281-5918 FAX 515-281-8895 WWW.IOWADNR.GOV

IOWA DEPARTMENT OF NATURAL RESOURCES
AMENDED SECTION 401 WATER QUALITY CERTIFICATION

Certification issued to:

Effective: February 2, 2010

Iowa Department of Transportation
800 Lincolnway
Ames, IA 50010

Nebraska Department of Roads
4425 South 108th Street
Omaha, NE 68145

Project certified: US Army Corps of Engineers, Joint Public Notice No. 2003-10140-WEH
State 401 Water Quality Certification, Application Log No.: 09-W-129-12-03-S

Project Description: Construct a new U.S. Highway 34 Bridge over the Missouri River in S7,8, 17, & 18, T72N, R43W and S2, 11-14, T72N, R44W, in Mills County, Iowa as well as S19 & 30, T13N, R14E and S23-24, T13N, R13E, in Sarpy County, Nebraska. The bridge is located at Missouri River mile 595.9. The U.S. 34 Bellevue Bridge will link U.S. 75 in Nebraska to I-29 in Iowa. The project will be approximately 6 miles in length and will impact 3.22 acres of emergent wetland and 0.89 acre of forested wetland in Iowa as well as 4.97 acre of riverine floodplain in Nebraska. To compensate for wetland impacts in Iowa, the Iowa Department of Transportation will purchase 6.61 acres of wetland mitigation credits from the G. William Coulthard Trust Wetland Mitigation Bank (S3-4, T78N, R45W, Harrison County, Iowa). To compensate for wetland impacts in Nebraska, the Nebraska Department of Roads will restore emergent wetlands at the Oreapolis Wetland Mitigation Site (S1, T12N, R13E, Cass County, Nebraska).

Water quality use designation:

This reach of the Missouri River is designated as Class A1 Primary contact recreational use. These are waters in which recreational or other uses may result in prolonged and direct contact with the water, involving considerable risk of ingesting water in quantities sufficient to pose a health hazard. The Missouri River is also designated as Class B(WW-1) which are waters in which temperature, flow and other habitat characteristics are suitable to maintain warm water game fish populations along with a resident aquatic community that includes a variety of native nongame fish and invertebrate species. The Missouri River is also designated as Class HH, human health, which are waters in which fish are routinely harvested for human consumption or waters both designated as a drinking water supply and in which fish are routinely harvested for human consumption. All surface waters in Iowa, including wetlands and those designated for Class "A", "B", and/or "C" are classified for the following general uses: livestock and wildlife watering, noncontact recreation, crop irrigation, and industrial, agricultural, domestic, and other incidental withdrawal uses.

The Iowa Department of Natural Resources (IDNR) has issued this State 401 Water Quality Certification pursuant to Section 401 of the Clean Water Act. The Army Corps of Engineers (Corps) requires state Certification before a Section 404 permit can be issued. Section 401 Certification represents the IDNR's concurrence that the project certified is consistent with the Water Quality Standards of the state of Iowa as set forth in Chapter 61, Iowa Administrative Code.

Subject to the attached conditions, incorporated by reference herein, the IDNR has determined that there is reasonable assurance the proposed activities will be conducted in a manner that will not violate water quality standards of the state of Iowa.

Prepared By: Christine M. Schwake Date Executed: February 2, 2010
Christine M. Schwake, IDNR, Wallace State Office Building, Des Moines, IA 50319-0034 (515) 281-6615

GENERAL CONDITIONS

1. Permittee is responsible for securing and for compliance with such other permits or approvals as may be required by the IDNR, federal, state, or local governmental agencies for the project activities described.
2. You are encouraged to conduct your construction activities during a period of low flow.
3. Clearing of vegetation, including trees located in or immediately adjacent to waters of the state, shall be limited to that which is absolutely necessary for construction of the project. All vegetative clearing material shall be removed to an upland, non-wetland disposal site.
4. All construction debris shall be disposed of on land in such a manner that it cannot enter a waterway or wetland. Construction equipment, activities, and materials shall be kept out of the water to the maximum extent possible. Equipment for handling and conveying materials during construction shall be operated to prevent dumping or spilling the material into waterbodies, streams or wetlands except as approved herein. Care shall be taken to prevent any petroleum products, chemicals, or other deleterious materials from entering waterbodies, streams or wetlands.
5. Spill protection materials (i.e., spill kit) will be readily available at the project site to contain and absorb accidental spills of fluids from construction equipment. Personnel trained in the implementation of the spill kit will be readily available onsite to respond to accidental spills.
6. Erosion control features (i.e., silt fences, silt ditches, silt dikes, silt basins, etc.) must be installed to provide continuous erosion control throughout the construction and post construction period as well as the revegetation of all disturbed areas upon project completion. Where siltation control features have been reduced in capacity by 50% or more, the features shall be restored to their original condition with a minimum of delay.
7. All disturbed areas not covered with riprap shall be seeded with native grasses, excluding Reed Canarygrass (*Phalaris arundinacea*) or any aggressive or invasive species, during an optimal seeding period. If excavation and construction are completed outside an optimal seeding period, temporary erosion control protection shall be implemented immediately upon completion of excavation and construction and shall be maintained until such time as seeding can be completed during an optimal period. The applicant shall monitor revegetated areas continuously to assure success of revegetation. If rye is initially planted to stabilize the soil then native warm season grasses shall be planted during the following growing season.
8. If temporary crossings are needed for the project, then the temporary structures and fills shall involve the least damaging and minimum amount of disturbance/impacts to waters of the state and appropriate measures must be taken to maintain near normal downstream flows, allow the passage of fish, and minimize flooding. If dredged material is to be used, it must first be tested and found to contain less than five percent fines that would pass through a #200 sieve. The material must be placed in such a way to prevent its washing downstream. All temporary fills shall be completely removed to an upland, nonwetland site and the area restored to pre-project conditions within 30 days of the end of their use.
9. Riprap shall consist of clean native fieldstone, clean quarry run rock or clean broken concrete. If broken concrete is used all reinforcement material shall be completely removed from it; if removal is not possible, said reinforcement material shall be cut flush with the flat surface of the concrete. It shall be the applicant's responsibility to maintain the riprap such that any reinforcement material that becomes exposed in the future is removed. The concrete pieces shall be appropriately graded and no piece shall be larger than 3 feet across the longest flat surface. No asphalt or petroleum based material shall be used as or included in riprap material.

10. Activities occurring in the Missouri River (i.e., cofferdam installation/removal, pile-driving activities, dredging, driving/vibrating of barge anchor spuds) will only occur July 1 through January 31 to avoid impacts on the pallid sturgeon.
11. A minimum of 500' of clear span (no piers in the river) will be maintained. The single river pier and 1st landward pier on the Nebraska side of the Missouri River will be constructed to minimize scouring of small pool areas above and below the bridge location to avoid creating wintering habitat for the pallid sturgeon in the area of the mixing zone of the wastewater treatment plant.
12. Prior to commencement of hydraulic dredging, the applicant shall perform a modified elutriate test procedure to predict the effluent quality or the total concentration of contaminants in the effluent. This test simulates the processes occurring during confined disposal and provides information on the dissolved and particulate contaminant concentrations. A copy of this procedure is enclosed for the applicant's information. Results of the elutriate test shall be forwarded to the Department when available. Should test results prove unsatisfactory, the Department may amend this Certification to assure that effluent water quality requirements are met. Please note that if mechanical dredging is performed, the testing will not be required.
13. Should the dredged materials be deposited on the shore before being hauled away, a silt fence, staked bales of straw, or low berms shall be required to limit the reentry of sediments into the lake or river.
14. It is the goal of the Water Quality Standards that all uses of the river be maintained and protected. The dredging will cease if the water quality standards of either the State of Iowa or the State of Nebraska are violated.
15. Tree clearing will not occur during the Bald eagle/*Haliaeetus leucocephalus* wintering period (December 15 through February 20) and will be minimized during the remainder of the year.
16. If construction of the project is planned to occur during the Bald eagle nesting period (April 1 through July 15), a survey for active Bald eagle nests will be completed 60-90 days before construction of the project. The survey will be conducted within an area of 1 mile upstream and 1 mile downstream of the project site. If active nest(s) are found within ½ mile or within the line of sight of the project, all construction will cease and FHWA will consult with the USFWS (308-382-6468). Attached to this certification is a map showing the location of a known eagle nest.
17. As of August 9, 2007 the Bald eagle is no longer included on the list of federally threatened and endangered species. It will remain protected under the Bald and Golden Eagle Protection Act and the Migratory Bird Treaty Act. For more information go to <http://www.fws.gov/midwest/eagle/guidelines/index.html>.
18. A reconnaissance survey for Interior least terns/*Sterna antillarum* (Iowa, Nebraska, & Federal Endangered) and Piping plovers/*Charadrius melodus* (Iowa Endangered, Nebraska & Federal Threatened) within a 0.25-mile radius of the project area will be completed prior to any construction activities. If nesting birds are found, the USFWS (308-382-6468), the IDNR (515-281-8524) and the Nebraska Games and Park Commission (NGPC 402-471-0641) will be contacted to determine whether construction activities may adversely affect the nesting birds. If USFWS determines that construction may adversely affect the nesting birds, construction activities will cease until the chicks fledge (leave the nest) or until the construction activities no longer will affect nesting or brooding birds.
19. Prior to construction, areas within the project right-of-way will be surveyed for the presence of Western Prairie Fringed Orchid/*Platanthera praeclara* (Iowa, Nebraska & Federal Threatened), Small White Lady's Slipper/*Cypripedium candidum* (Nebraska Threatened, Iowa Special Concern), and American Ginseng/*Panax quinquefolium* (Nebraska Threatened). The IDNR (515-281-3891), NGPC, and USFWS will be contacted if these species are found.

20. Appropriate measures will be taken to ensure that the project does not facilitate the spread of zebra mussels. Barges will be inspected for the presence of zebra mussels, washed and dried as appropriate prior to placement in the Missouri River.
21. As compensation for the wetland impacts associated with this project, the IDOT will purchase 6.61 acres of wetland credits at the G. William Coulthard Trust Wetland Mitigation Bank in Harrison County, Iowa. This 401 Water Quality Certification is contingent upon the purchase of 6.61 acres of wetland mitigation credits. Documentation of this purchase with signatures of the IDOT and mitigation banker must be provided to the DNR and Corps as soon as possible, but no later than one year after the date the Corps issues the 404 permit.

BMPs

The permittee agrees to make every reasonable effort to prosecute the construction or work authorized herein in a manner so as to minimize any adverse impact of the construction or work on fish, wildlife, and natural environmental values.

All construction debris will be disposed of on land in such a manner that it cannot enter a waterway or wetland.

The permittee shall establish and carry out a program for immediate removal of debris during construction in order to prevent the accumulation of unsightly, deleterious and/or potentially polluted materials.

Equipment for handling and conveying materials during construction shall be operated to prevent dumping or spilling the materials into wetlands or the waterway, except as approved herein.

All dredged or excavated materials, with the exception of that authorized herein, shall be placed on an upland site above the ordinary high water line in a confined area, not classified as a wetland, to prevent the return of such materials to the waterway.

Steps will be taken to prevent materials spilled or stored on site from washing into the wetlands or waterway as a result of cleanup activities, natural runoff, or flooding, and that, during construction, any materials, which are accidentally spilled into these areas, will be retrieved.

All earthwork operations on shore will be carried out in such a manner that sediment runoff and soil erosion to the river are controlled.

Care will be taken to prevent any petroleum products, chemicals, or other deleterious materials from entering the water.

The use of machinery in the waterway will be kept to a minimum.

When the District Engineer has been notified that a dredging or filling activity is adversely affecting fish or wildlife resources or the harvest thereof and the District Engineer subsequently directs remedial measures, the permittee will comply with such directions as may be received to suspend or modify the activity to the extent necessary to mitigate or eliminate the adverse effect as required.

All trees and shrubbery which are not specifically required to be cleared or removed for construction or operations purposes shall be preserved and shall be protected from any damage by construction operations and equipment.

The clearing of vegetation will be limited to that which is absolutely necessary for construction and operation of the project.

Measures will be employed to prevent wet concrete from entering the waterway or wetlands.

Concrete trucks will be washed at the site and in such a manner that washwater cannot enter the waterway or wetlands.

Turbidity controls in the form of silt curtains or similar type cloth material shall be installed downstream from the activity authorized herein and shall remain in place and maintained until construction is complete.

All erosion and sediment control practices shall be in place prior to any grading or filling operations and installation of proposed structures or utilities. They shall remain in place and maintained until construction is completed and the area is stabilized.

All fill material shall be free of fines, oil and grease, debris, wood, general refuse, plaster, and other pollutants, and shall contain no broken asphalt.

All temporary fill shall be removed in their entirety and the area restored to its preconstruction contours.

Instream work shall be timed to avoid the major fish spawning period of April 15 to June 1.

Adequate pipes shall be installed in the temporary crossing to carry normal flows and prevent the restriction of expected high flows during construction.

No tributaries, oxbows or other backwater areas will be "cut off".

The cross-sectional area of the channel will not be reduced.

No more than half of the stream channel shall be blocked at any one time so as not to diminish the flow downstream of the project.

The permittee shall be fully responsible for signage, fencing or other precautions necessary to discourage unauthorized access to the project site and promote public safety.



United States Department of the Interior

FISH AND WILDLIFE SERVICE
Washington, Washington, D C 20240

MBPM-2
Date: APR 15, 2003

MIGRATORY BIRD PERMIT MEMORANDUM

SUBJECT: Nest Destruction

PURPOSE: The purpose of the memorandum is to clarify the application of the Migratory Bird Treaty Act (MBTA) to migratory bird nest destruction, and to provide guidance for advising the public regarding this issue.

POLICY: The MBTA does not contain any prohibition that applies to the destruction of a migratory bird nest alone (without birds or eggs), provided that no possession occurs during the destruction. To minimize MBTA violations, Service employees should make every effort to inform the public of how to minimize the risk of taking migratory bird species whose nesting behaviors make it difficult to determine occupancy status or continuing nest dependency.

The MBTA specifically protects migratory bird nests from *possession, sale, purchase, barter, transport, import, and export, and take*. The other prohibitions of the MBTA – *capture, pursue, hunt, and kill* – are inapplicable to nests. The regulatory definition of *take*, as defined by 50 CFR 10.12, *means to pursue, hunt, shoot, wound, kill, trap, capture, or collect, or attempt to pursue hunt, shoot, wound, kill, trap, capture, or collect*. Only *collect* applies to nests.

While it is illegal to collect, possess, and by any means transfer possession of any migratory bird nest, the MBTA does not contain any prohibition that applies to the destruction of a bird nest alone (without birds or eggs), provided that no possession occurs during the destruction. The MBTA does not authorize the Service to issue permits in situations in which the prohibitions of the Act do not apply, such as the destruction of unoccupied nests. (Some unoccupied nests are legally protected by statutes other than the MBTA, including nests of threatened and endangered migratory bird species and bald and golden eagles, within certain parameters.)


However, the public should be made aware that, while destruction of a nest by itself is not prohibited under the MBTA, nest destruction that results in the unpermitted take of migratory birds or their eggs, is illegal and fully prosecutable under the MBTA.

Due to the biological and behavioral characteristics of some migratory bird species, destruction of their nests entails an elevated degree of risk of violating the MBTA. For example, colonial nesting birds are highly vulnerable to disturbance; the destruction of unoccupied nests during or near the nesting season could result in a significant level of take. Another example involves

ground nesting species such as burrowing owls and bank swallows, which nest in cavities in the ground, making it difficult to detect whether or not their nests are occupied by eggs or nestlings or are otherwise still essential to the survival of the juvenile birds. The Service should make every effort to raise public awareness regarding the possible presence of birds and the risk of violating the MBTA, the Endangered Species Act (ESA), and the Bald and Golden Eagle Protection Act (BGEPA), and should inform the public of factors that will help minimize the likelihood that take would occur should nests be destroyed (i.e., when active nesting season normally occurs).

The Service should also take care to discern that persons who request MBTA permits for nest destruction are not targeting nests of endangered or threatened species or bald or golden eagles, so that the public can be made aware of the prohibitions of the ESA and the BGEPA against nest destruction.

In situations where it is necessary (i.e., for public safety) to remove (destroy) a nest that is occupied by eggs or nestlings or is otherwise still essential to the survival of a juvenile bird, and a permit is available pursuant to 50 CFR parts 13 and 21, the Service may issue a permit to take individual birds.



Director

Recommended Procedures for Compliance With the Migratory Bird Treaty Act

Introduction

Migratory bird species are protected under the Migratory Bird Treaty Act (MBTA) (16 U.S.C. 703-712: Ch. 128 *as amended*). The MBTA prohibits the take of any migratory bird without authorization from the U.S. Fish and Wildlife Service (Service). Section 703 of MBTA provides: "Unless and except as permitted by regulations...it shall be unlawful at any time, by any means or in any manner, to...take, capture, kill, attempt to take, capture, or kill, possess...any migratory bird, any part, nest, or eggs of any such bird..." Birds protected under MBTA include all birds with the exception of non-migratory upland game birds (e.g., quail, grouse, pheasant, turkey, etc.) and non-native birds (e.g., European starling, pigeon (rock dove), English house sparrow, etc.). In addition, some species of migratory birds and their nests are further protected by the Bald and Golden Eagle Protection Act (BGEPA) (16 U.S.C. 688-688d (a and b)) and/or the Endangered Species Act (ESA) of 1973 (87 Stat. 884, as amended; 16 U.S.C. 1531 *et seq.*). Notwithstanding the applicability of BGEPA and ESA, any unauthorized take of migratory birds is a violation of MBTA and does not require intent to be proven, regardless of whether such take is due to direct or indirect means. As mentioned above, the destruction or disturbance of a migratory bird nest that results in the unpermitted take of migratory birds or eggs is also a violation of MBTA. The attached copy of the Service's Migratory Bird Permit Memorandum (MBPM-2), signed by Director Steve Williams on April 15, 2003, provides additional information regarding the applicability of MBTA to migratory bird nest destruction.

Executive Order (EO) 13186, "Responsibilities of Federal Agencies to Protect Migratory Birds," defines the responsibility of federal agencies to protect migratory birds and their habitats. The intent of the EO is to strengthen migratory bird conservation by identifying and implementing strategies that promote conservation and minimize the take of migratory birds through consideration in land use decisions and collaboration with the Service. The EO requires federal agencies to ensure that the environmental analyses of their actions evaluate the effects of such actions and agency plans on migratory birds, with emphasis on species of concern.

In the past, the Service's Division of Migratory Bird Coordination (DMBC) in the Denver Regional Office has issued special permits under MBTA. The DMBC has recently determined that, under most circumstances, there will no longer be any special permits issued for the take of active migratory bird nests (eggs/young) as a result of projects or activities by various federal, State, local, or private entities. However, the Service recognizes that on occasion there will be conflicts between nesting migratory birds and such projects or activities. Thus, to avoid possible law enforcement action by Service Special Agents, it is recommended that the following procedures be adhered to in the order that they are presented.

1. Avoidance

Under MBTA, construction/demolition activities in grassland, wetland, stream, and woodland habitats, and those occurring on bridges or other structures (e.g., which may impact swallow nests on bridge structures) that would otherwise result in the take of migratory birds, eggs, young, and/or active nests should be avoided. Although the provisions of MBTA are applicable year-round, most migratory bird nesting activity in Nebraska occurs during the period of April 1 through July 15. To prevent impacts to active nests, land-clearing activities, including the removal of structures as well as vegetation, should be scheduled to occur prior to or after the migratory bird nesting season (i.e., April 1 through July 15). All active nests should be left in place until the eggs have hatched and the young have fledged.

2. Migratory Bird Surveys and Reporting Procedures

In light of the above procedure, some migratory birds are known to nest outside of the aforementioned primary nesting season period. For example, raptors can be expected to nest in woodland habitats during February 1 through July 15, whereas sedge wrens which occur in some wetland habitats normally nest from July 15 to September 10. If a proposed project or activity is planned to occur during the primary nesting season or at any other time which may result in the take of nesting migratory birds, the Service recommends that the project proponent (and/or construction contractor) arrange to have a qualified biologist conduct a field survey of the affected habitat(s) and structure(s) to determine the absence or presence of nesting migratory birds. Surveys must be conducted during the nesting season.

The Service further recommends that field surveys for nesting birds, along with information regarding the qualifications of the biologist(s) performing the surveys, be thoroughly documented and that such documentation be maintained on file by the project proponent (and/or construction contractor) until such time as the project or activity has been completed. Refer to the attached information for "Recommended Bird Surveyor Qualifications." A list of people who are qualified and interested in conducting nesting migratory bird surveys in Nebraska is available upon request from the Service's Nebraska Ecological Services Field Office (NEFO) by calling 308-382-6468.

The Service requests that if a field survey reveals the presence of one or more active migratory bird nests (i.e., containing one or more eggs or young birds), prior to commencement of work at a project site, the following documentation should be submitted to the NEFO at the following address: U.S. Fish and Wildlife Service, 203 West Second Street, Federal Building – Second Floor, Grand Island, Nebraska 68801, or FAX 308-384-8835:

- a) A copy of the report documenting the results of a survey for migratory birds done in conjunction with a proposed project. As a minimum, the survey report should provide detailed information regarding identification of the bird surveyor and that person's qualifications, survey methods used, date/time/location of the survey, weather conditions at the time of the survey, species observed/heard relative to the proposed project site, and the location and number of active bird nests; and

- b) A written description of all the avoidance measures that have either been attempted or are planned to be implemented at the proposed project site to avoid the take of migratory birds (e.g., survey efforts, inactive nest removal attempts outside of the primary nesting season, clearing/grubbing of vegetation, establishment of buffer zones around active nest sites, other work-around efforts, etc.); or
- c) A written description of the proposed project and the circumstances whereby the project proponent believes that the take of one or more active bird nests cannot be avoided by the planned work activities, with appropriate justification as to why avoidance measures have failed or cannot be implemented.

The purpose of the requested documentation is to aid the Service in helping the project proponent avoid any potential take of migratory birds. If a field survey does not reveal the presence of any active migratory bird nests on the project site, it is unnecessary for the project proponent to report such a finding to the NEFO. However, it is advisable that the project proponent retain a copy of any negative or positive survey report (including bird surveyor qualifications information) on file until all work on the project has been completed as recommended above.

3. Migratory Bird Take

Immediately after receiving a formal survey report accompanied by a description of a scenario whereby the take of migratory birds seems unavoidable, the NEFO will coordinate with the project proponent and confirm whether all practical means have been pursued to avoid any such take. If the NEFO determines that the project proponent has taken all appropriate measures to avoid the take of nesting migratory birds, yet continuation of the project will likely result in minimal take, the NEFO will subsequently notify DMBC and the Service's Office of Law Enforcement (OLE) about the matter. If OLE concurs that the project proponent has taken the necessary measures to avoid or minimize take, and that the project proponent is continuing to work with the Service to resolve any migratory bird issues, the OLE will exercise law enforcement discretion and not refer the information regarding the take to the U.S. Attorney's Office for possible prosecution. The OLE's decision regarding the matter will be provided to the project proponent and may include special conditions. In the event this recommended procedure is not followed and the take of migratory birds occurs, the OLE may refer that take to the U.S. Attorney's Office for possible prosecution.

Attachments

Attachments

Recommended Bird Surveyor Qualifications

It is recommended that a person possess the following qualifications to conduct a nesting bird survey in support of a proposed federal/state project or activity:

1. A degree in a biological science, ecology, natural resource management, or related discipline appropriate to the position. The degree must be obtained from an accredited college or university. Courses taken should include ornithology, population biology, ecology, botany, and statistics. Transcripts should be provided to the employer. *
-OR-
A combination of formal education and field experience equivalent to a major in one of the above mentioned fields, plus appropriate experience or additional education. Transcripts or certificates of courses completed should be provided to the employer along with description of duties performed for field experience qualifications.
2. Evidence is provided to the employer that the person conducting ornithological surveys has knowledge in the fields of either biology, ecology, wildlife management, or ecology and special knowledge and understanding of pertinent terrestrial and aquatic ecosystems, especially Great Plains ecosystems, particularly Nebraska.
3. Evidence of knowledge, skills, and ability is provided to the employer that demonstrates the person's experience to successfully perform the duties required. This evidence must show the person's ability to identify birds by sight, sound, and nests, including cavity nesters. Examples include: experience in the performance of research or other professional or scientific work involving birds, their abundance and distribution, characteristics, life processes and adaptations, and ecological relationships.
4. Evidence of knowledge, skills, and ability to identify method of bird survey to conduct (e.g., point counts, line transects, etc.), design of survey, data collection and analysis, and reporting.
5. Provide a list of projects or events to the employer, including the name of previous employers, their address and telephone numbers, where bird surveys were conducted and the surveyor's involvement. Include a list of publications if projects that were submitted and approved by scientific journals for inclusion.
6. Provide a list of references of those people who would be able testify to the bird surveyor's knowledge, skills, and abilities to conduct surveys for nesting birds. This list should include names, addresses, telephone numbers, and relationship to the subject surveyor.

* It is anticipated that the employer could be either the lead federal/state action agency or more likely, one of the action agency's contractors/sub-contractors performing work in support of the proposed project or activity.

MAY 24 2010

U.S. Department of
Homeland Security

United States
Coast Guard



Commander
Eighth Coast Guard District

1222 Spruce Street
St. Louis, MO 63103-2832
Staff Symbol: dwb
Phone: (314) 269-2382
Fax: (314) 269-2737
Email: david.a.orzechowski@uscg.mil
www.uscg.mil/d8/westernriversbridges

16593.22/595.9 MOR
May 19, 2010

Mr. Norm McDonald
Iowa Department of Transportation
Office of Bridges and Structures
800 Lincoln Way
Ames, IA 50010

To Ron
From Norm

Subj: PROPOSED U.S. 34 HIGHWAY BRIDGE, MILE 595.9, MISSOURI RIVER

Dear Mr. McDonald:

Your application requesting approval of the location and plans for a proposed bridge at mile 595.9 over the Missouri River has been approved. Bridge Permit (8-10-8) dated May 13, 2010, is enclosed.

It is essential that we be kept informed of any events that could affect navigation during construction of the pier protection cells. A representative from your office should be specifically instructed to keep our office informed of the progress of construction with particular reference to any and all events that may have an effect on navigation. The information received regarding the work will be disseminated to mariners by radio and written notices.

Your attention is directed to Condition (2) of the permit that requires plans for cofferdams, temporary causeways, or any other temporary structures that will be placed in the water to facilitate construction of the pier protection cells to be approved by this office. Construction of the pier protection cells must be accomplished with minimal interference to navigation. To this end, construction schedules, plans and erection schemes should be submitted to us at the earliest possible time so that approval can be assured prior to commencing work.

Navigation lights and retro-reflective panels for the bridge are prescribed in enclosure (2a). The lights and reflective panels, prescribed in accordance with Title 33, Code of Federal Regulations, Part 118, shall be installed at the locations and in the manner shown in enclosure (2b), which is a marked-up copy of the permit drawings.

You are required by Condition (5) of the Permit to install vertical clearance gauges. The gauges shall be installed as prescribed in enclosure (3) which is a copy of Coast Guard instructions for installing vertical clearance gauges on bridges.

Subj: PROPOSED U.S. 34 HIGHWAY BRIDGE,
MILE 498.0, MISSOURI RIVER

16593 22/595 9 MOR
May 19, 2010

Please acknowledge receipt of the Permit. If you have any questions concerning our jurisdiction or requirements, you can contact David Orzechowski at 314-269-2382.

Sincerely,



ERIC A. WASHBURN
Bridge Administrator
By direction of the District Commander

Enclosures: (1) USCG Bridge Permit (8-10-8), dtd May 13, 2010 w/approved drwgs
(2) a. Navigation Lights Narrative
b. Navigation Lighting Scheme
(3) Vertical Clearance Gauge Requirement

Copy: USCGC GASCONADE w/o encls
Sector UMR w/o encls
CDRUSAED Omaha District w/encl (1)



BRIDGE PERMIT

(8-10-8)

MAY 13 2010

WHEREAS by Title V of an act of Congress approved August 2, 1946, entitled "General Bridge Act of 1946," as amended (33 U.S.C. 525-533), the consent of Congress was granted for the construction, maintenance and operation of bridges and approaches thereto over the navigable waters of the United States;

AND WHEREAS the Secretary of Homeland Security has delegated the authority of Section 502(b) of that act to the Commandant, U. S. Coast Guard by Department of Homeland Security Delegation Number: 0170.1;

AND WHEREAS before construction is commenced, the Commandant must approve the location and plans of any such bridge and may impose any specific conditions relating to the construction, maintenance and operation of the structure deemed necessary in the interest of public navigation, such conditions to have the force of law;

AND WHEREAS the - STATES OF IOWA AND NEBRASKA - have submitted for approval the location and plans of a bridge to be constructed across the Missouri River near Bellevue, Nebraska, and Mills County, Iowa;

NOW THEREFORE, This is to certify that the location and plan sheet 1 (of 3) dated February 2010 and sheets 2 and 3 dated January 2010 are hereby approved by the Commandant, subject to the following conditions:

1. No deviation from the approved plans may be made either before or after completion of the structure unless the modification of said plans has previously been submitted to and received the approval of the Commandant.

2. The construction of falsework, pilings, cofferdams or other obstructions, if required, and the scheme for constructing the bridge shall be in accordance with plans submitted to and approved by the Commander, Eighth Coast Guard District, prior to construction of the bridge. All work shall be so conducted that the free navigation of the waterway is not unreasonably interfered with and the present navigable depths are not impaired. Timely notice of any and all events that may affect navigation shall be given to the District Commander during construction of the bridge. The channel or channels through the structure shall be promptly cleared of all obstructions placed therein or caused by the construction of the bridge to the satisfaction of the District Commander, when in the judgment of the District Commander the construction work has reached a point where such action should be taken, but in no case later than 90 days after the bridge has been opened to traffic.

**Bridge across the Missouri River near Bellevue, Nebraska,
and Mills County, Iowa**MAY 13 2010
BRIDGE PERMIT
(8-10-8)

3. Issuance of this permit does not relieve the permittee of the obligation or responsibility for compliance with the provisions of any other law or regulation as may be under the jurisdiction of any federal, state or local authority having cognizance of any aspect of the location, construction or maintenance of said bridge.

4. A bridge fendering system shall be installed and maintained in good condition by and at the expense of the owner of the bridge when so required by the District Commander. Said installation and maintenance shall be for the safety of navigation and be in accordance with plans submitted to and approved by the District Commander prior to its construction.

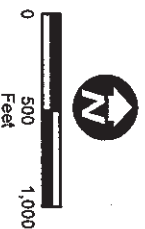
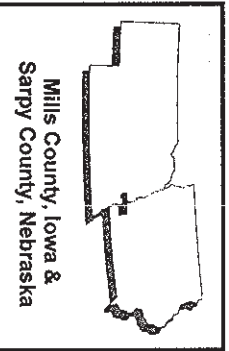
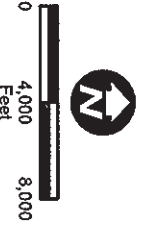
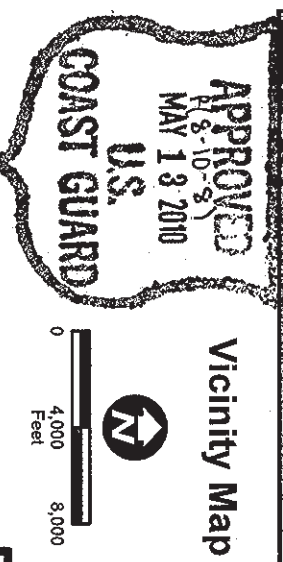
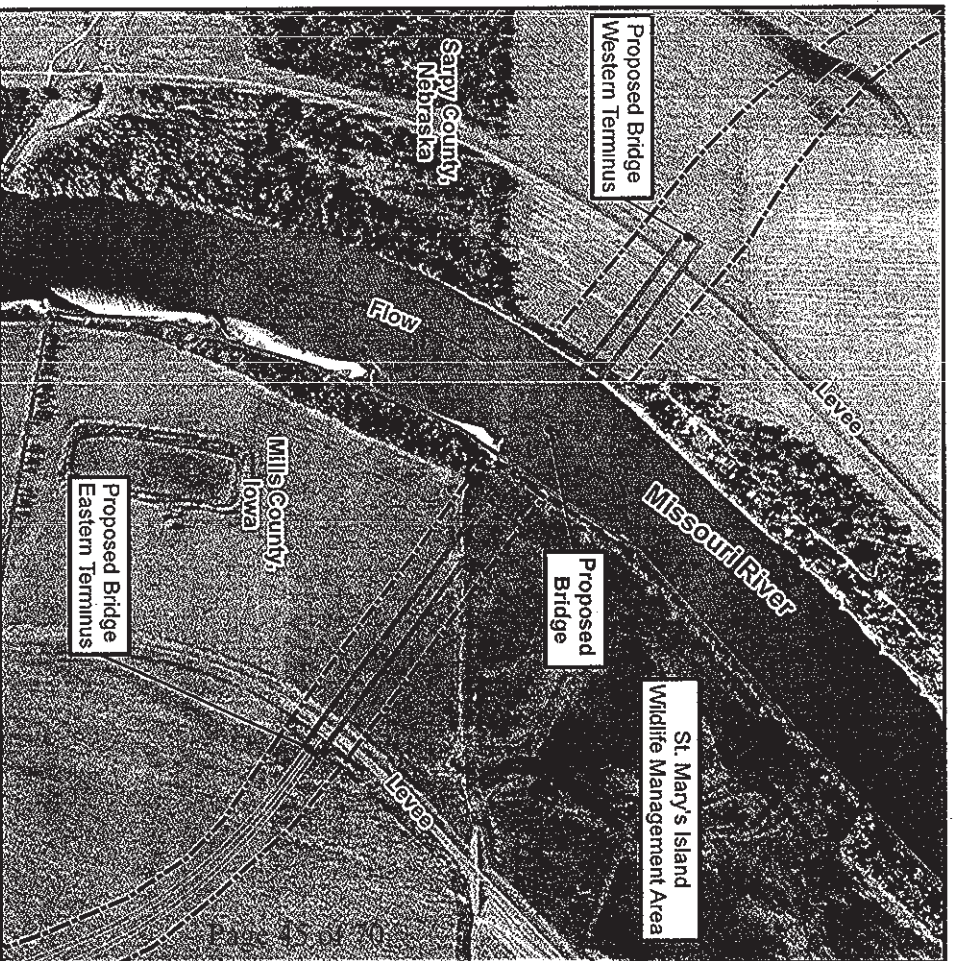
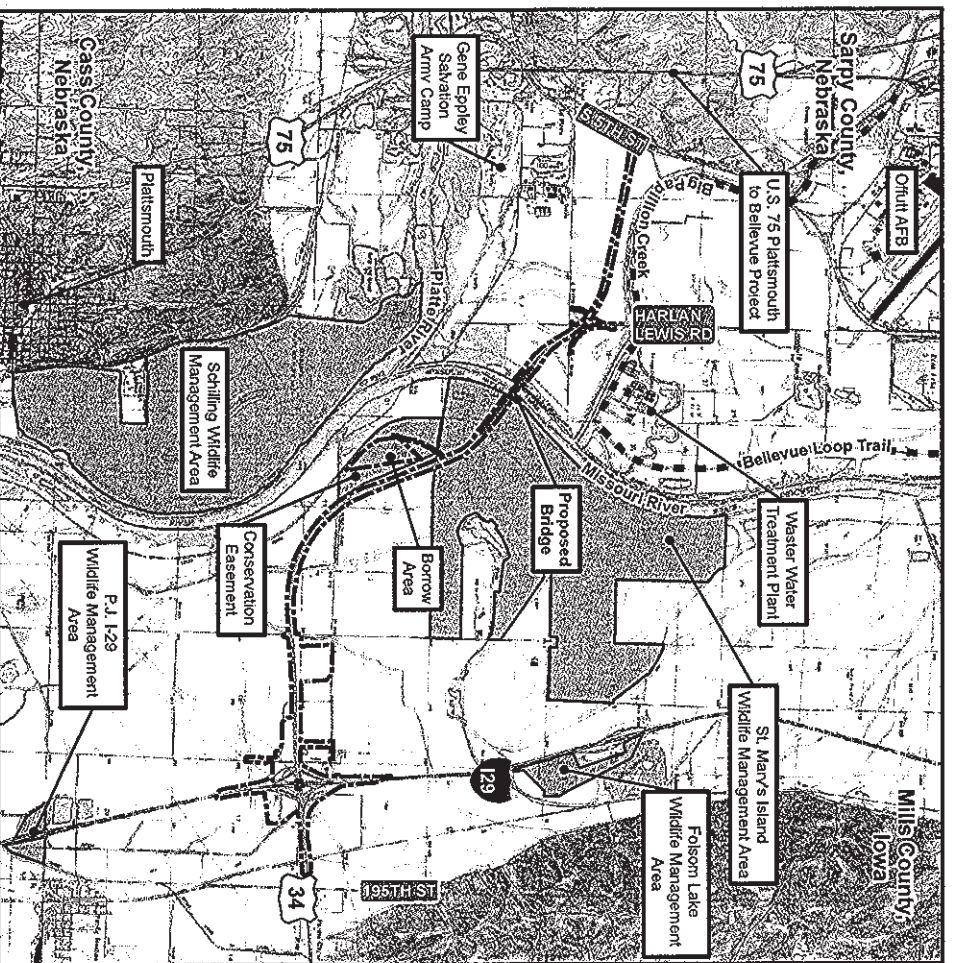
5. Clearance gauges shall be installed and maintained in a good and legible condition by and at the expense of the owner of the bridge when so required by the District Commander. The type of gauges and the locations in which they are to be installed will be submitted to the District Commander for approval.

6. When the proposed bridge is no longer used for transportation purposes, it shall be removed in its entirety or to an elevation deemed appropriate by the District Commander and the waterway cleared to the satisfaction of the District Commander. Such removal and clearance shall be completed by and at the expense of the owner of the bridge upon due notice from the District Commander.

7. The approval hereby granted shall cease and be null and void unless construction of the bridge is commenced within five years and completed within eight years after the date of this permit.

A handwritten signature in black ink, appearing to read 'Hala Elgaaly', with the letters 'For' written in smaller script to the right of the signature.

HALA ELGAALY, P.E.
Administrator, Bridge Program
U. S. Coast Guard
By direction of the Commandant



Legend

- Proposed Bridge
- Proposed Alignment
- Limits of Construction
- Recreational Trail
- Wildlife Management Area

Base Map: USDA-NRCS-NCGC Digital Raster
Graphic: MxSD Mosaic, Mills County, Iowa, Aerial Imagery: Bing Maps

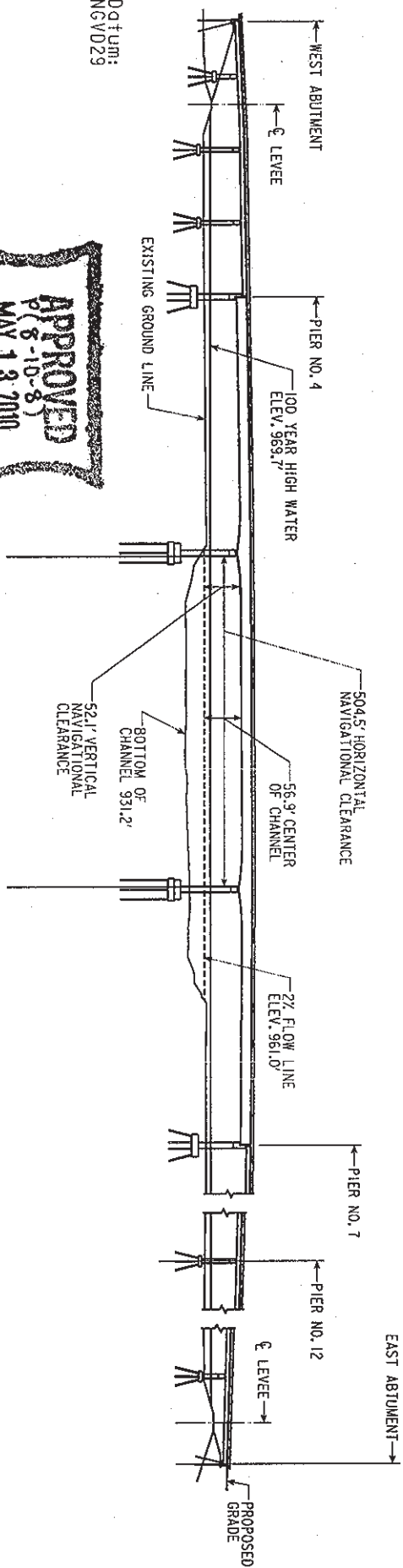
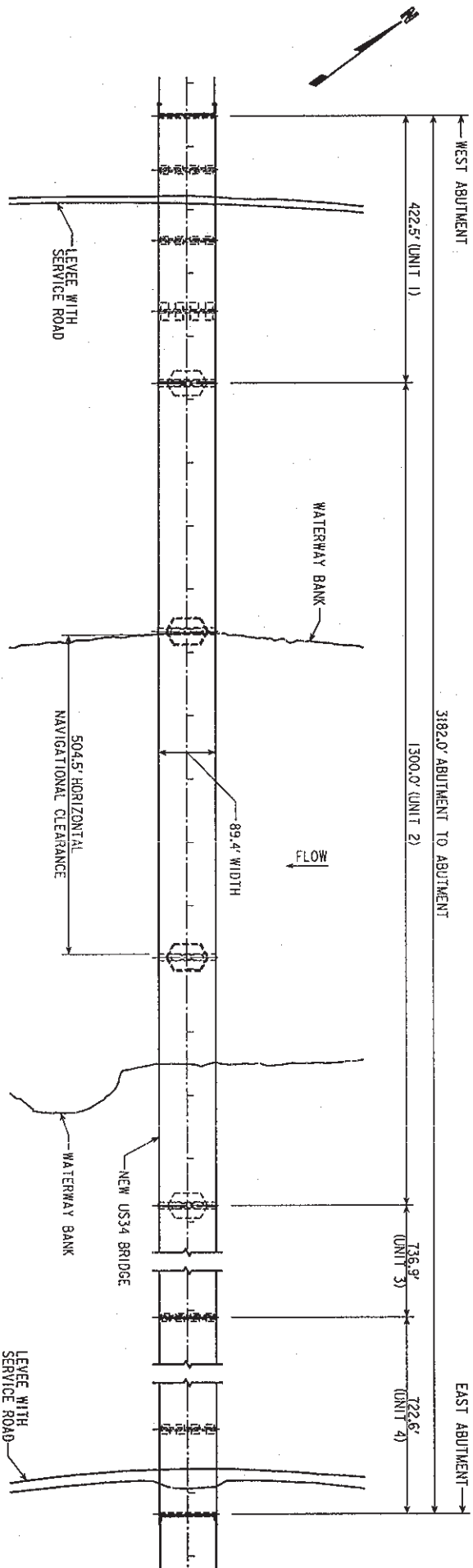


Project Location Map

Proposed US 34 Missouri River Bridge
River Mile 595.9, Missouri River
Near Bellevue, Sarpy County, Nebraska & Mills County, Iowa
Application by Iowa Department of Transportation



DATE	February 2010
SHEET	1 of 3



0 125 250
SCALE IN FEET

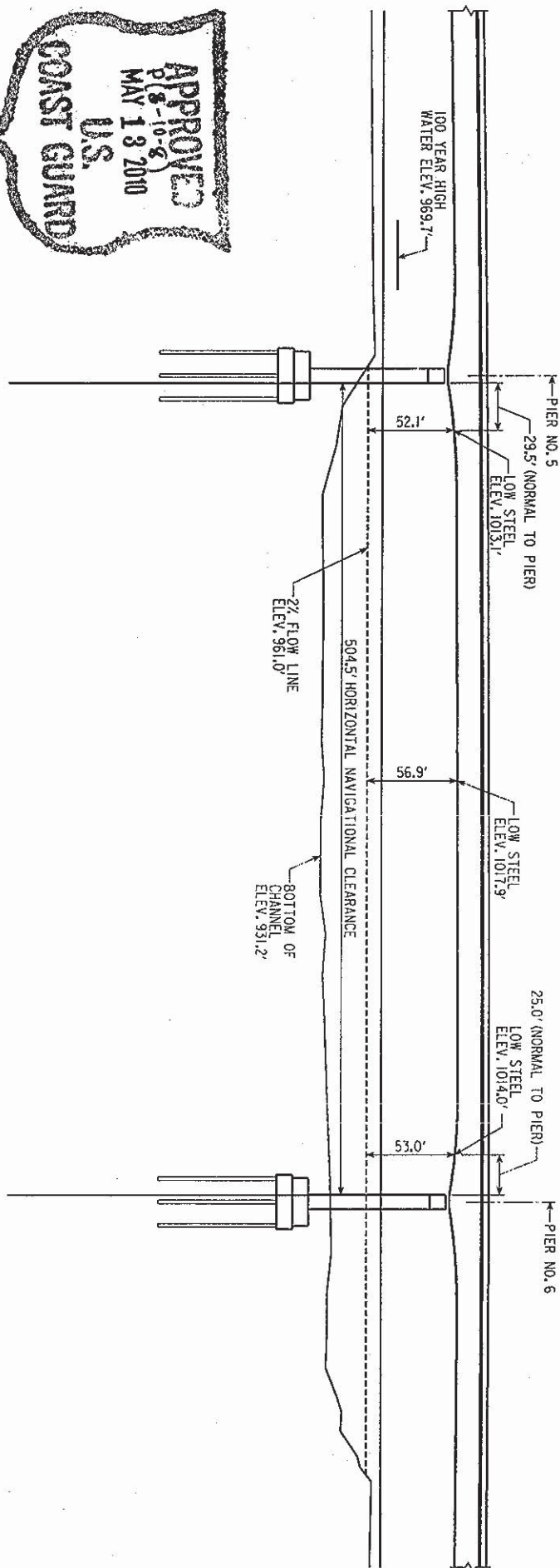


ELEVATION VIEW



0 100 200
SCALE IN FEET

ELEVATION VIEW NAVIGATIONAL CHANNEL



Datum:
NGVD29

NAVIGATION LIGHTS
FOR
U.S. 34 HIGHWAY BRIDGE
NEAR BELLEVUE, NEBRASKA
MILE 595.9, MISSOURI RIVER

The center of the navigation channel span shall be marked by a range of two green lights. Each green light shall show through a horizontal arc of 360 degrees and shall be securely mounted just below the outermost edge of the bridge span structure in line with the axis of the channel so as to be visible from an approaching vessel.

Each margin of the channel shall be marked with two red lights, one on the upstream side and one on the downstream side of the bridge span structure. Each red light shall show through a horizontal arc of 180 degrees and shall be securely mounted just below the outermost edge of the bridge to show 90 degrees on either side of a line parallel to this axis of the channel so as to be visible from an approaching vessel.

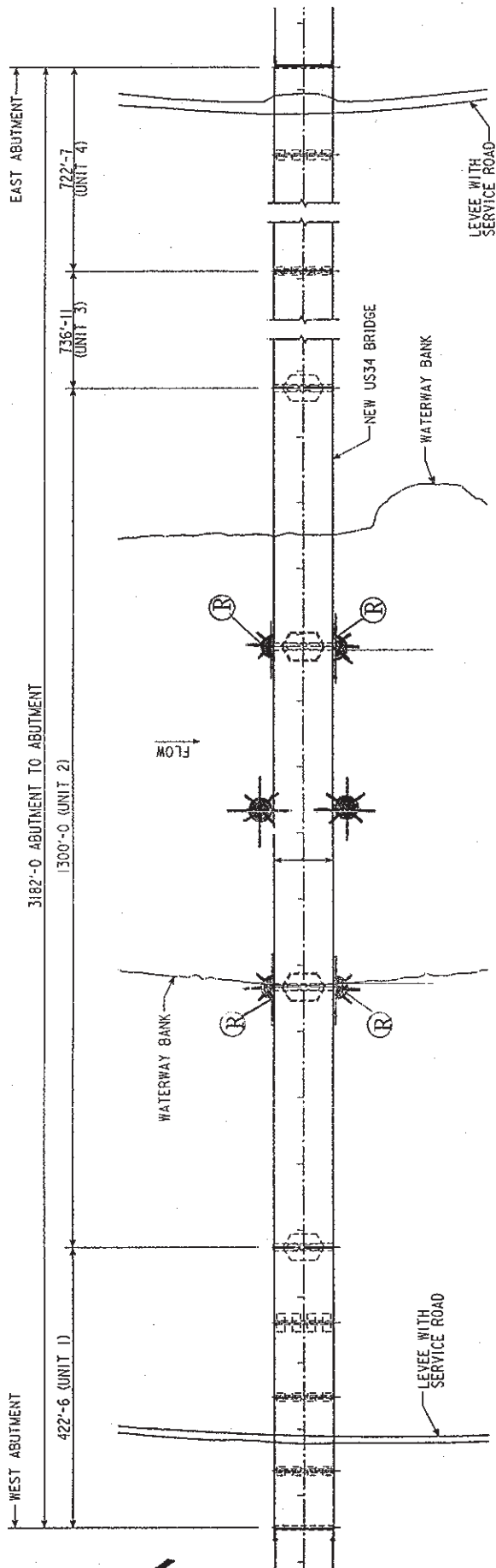
Each margin of the channel, one on the upstream side and one on the downstream side shall be marked with high intensity red retro-reflective material, which measures two feet per side. The high intensity red retro-reflective panels should be placed near the top of the red navigation lights so as to effectively reflect the searchlight of an approaching vessel but not positioned so as to obscure the red navigation lights.

The lights and retro-reflective panels prescribed above shall be displayed from sunset to sunrise each night of the year and at other times when the visibility is less than one mile. The lights shall be of sufficient candlepower as to be visible against the background lighting at a distance of at least 2,000 yards 90% of the nights of the year.

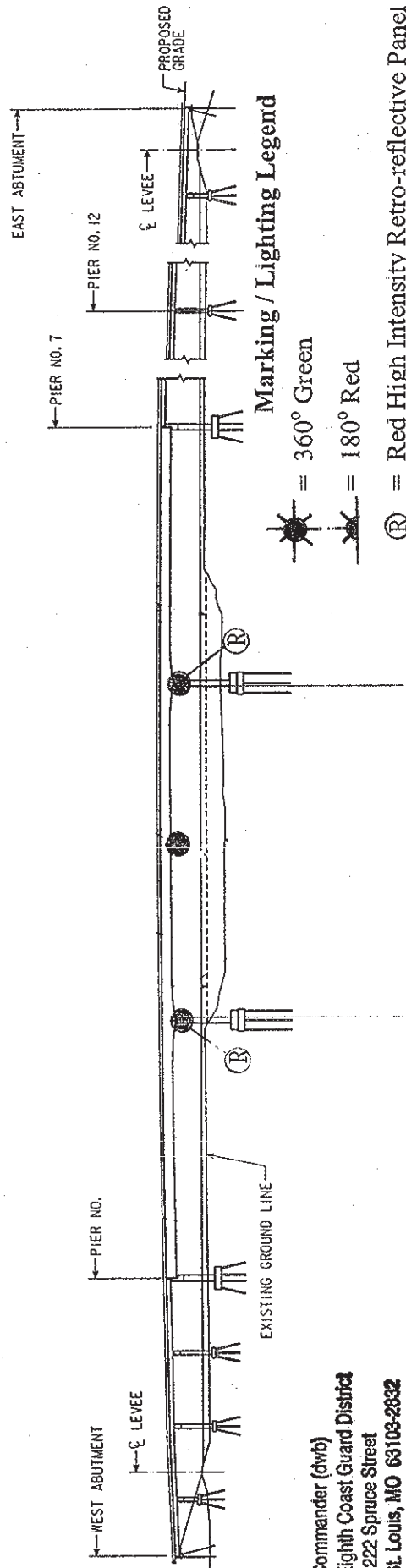
Responsibility of the owner does not cease upon installation of the prescribed lights and retro-reflective panels. Provisions for maintaining all lights and reflectors prescribed herein should be included in the planning for initial installation. A continuing program of inspection and maintenance is necessary to insure that the lights and reflectors are properly displayed.

This is enclosure (2a) to CGD8 (dwb) ltr dated May 19, 2010

NAVIGATION LIGHTING PLAN U.S. 34 HIGHWAY BRIDGE MILE 595.9, MISSOURI RIVER



PLAN VIEW



Marking / Lighting Legend

- = 360° Green
- = 180° Red
- Ⓡ = Red High Intensity Retro-reflective Panel

ELEVATION VIEW

PROPOSED US34 BRIDGE
RIVER MILE 595.9, MISSOURI RIVER
NEAR BELLEVUE, NEBRASKA
SARPY COUNTY, NEBRASKA
MILLS COUNTY, IOWA
APPLICATION BY
IOWA DEPARTMENT OF TRANSPORTATION

Commander (dwb)
Eighth Coast Guard District
1222 Spruce Street
St. Louis, MO 63103-2832

Navigational lights and/or other signals
prescribed per Title 33 CFR part 118

5/19/10
Roger K. Wieseman, Bridge Administrator Date
S.A. Winkler

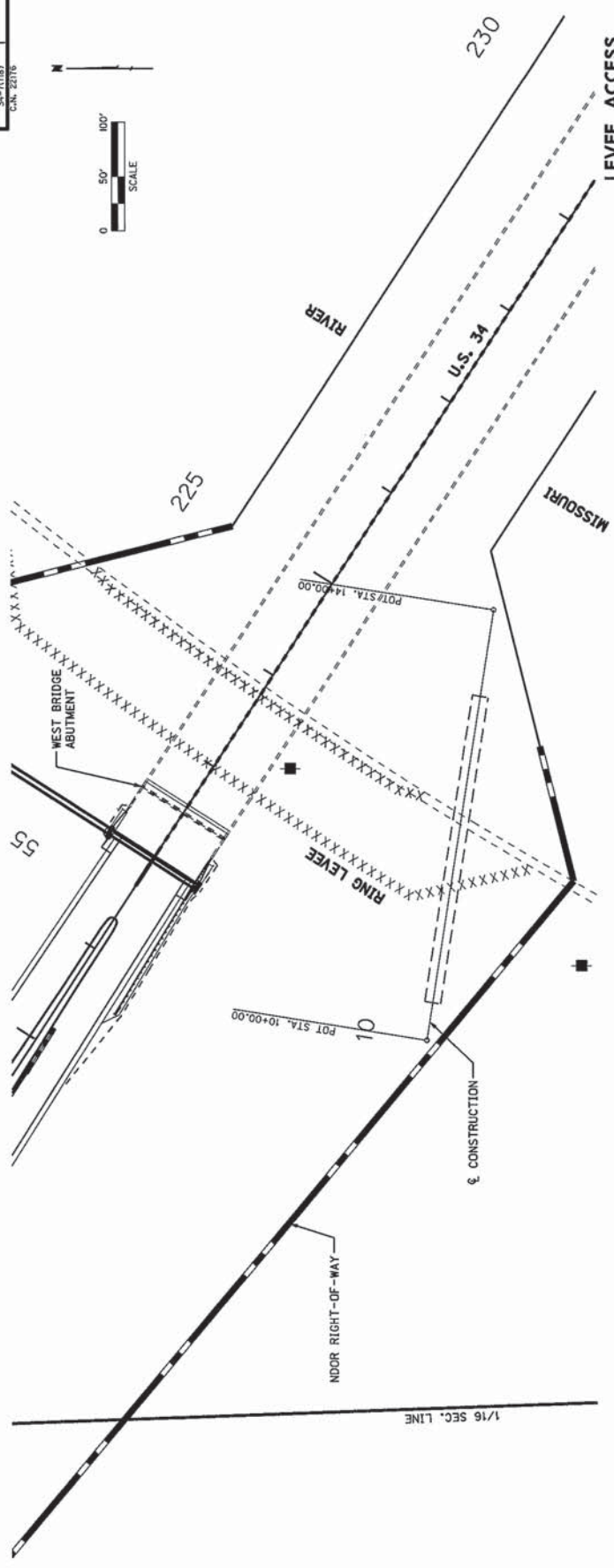
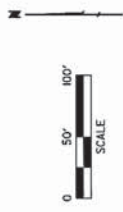
VERTICAL CLEARANCE GAUGE
FOR THE
U S. 34 HIGHWAY BRIDGE
NEAR BELLEVUE, NEBRASKA
MILE 595.9, MISSOURI RIVER

Vertical clearance gauges shall be installed on the upstream and downstream sides of the left descending channel pier. The E Series, 30-inch standard numerals shall be used unless the width of the pier will not accommodate this size gauge, in which case the largest numeral compatible with the width of the pier shall be used. The line indicating the topmost numeral of the gauge shall be at least 40 feet below low steel of the bridge. The line indicating the bottom numeral shall be at least 50 feet below low steel of the bridge.

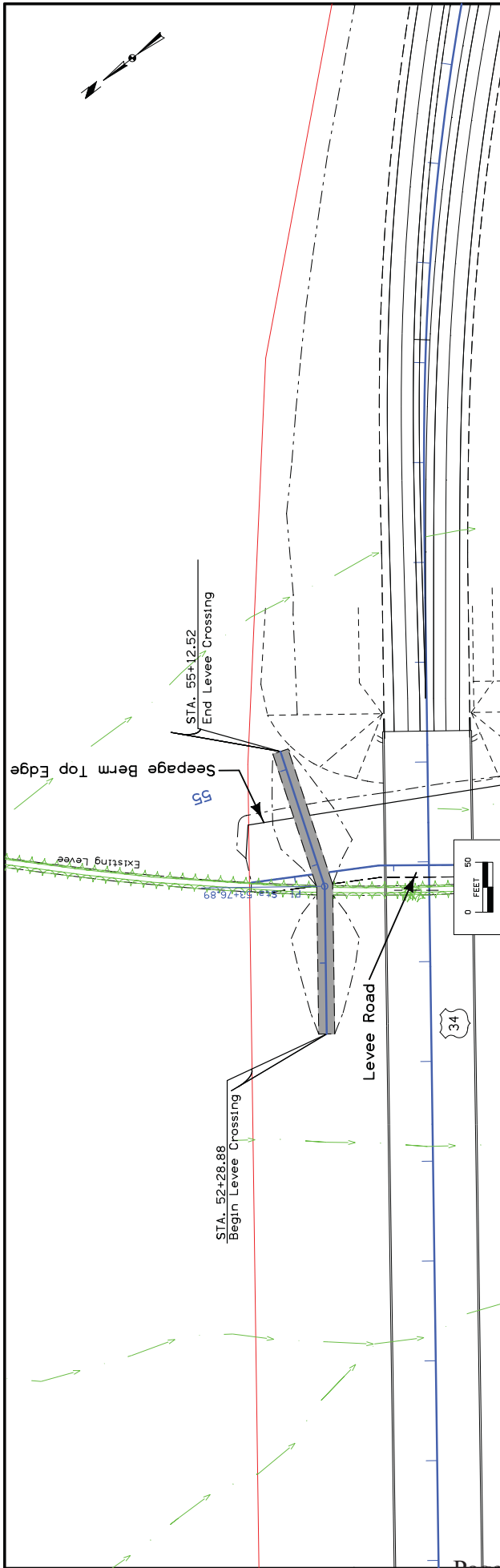
The gauge prescribed herein shall read from top to bottom and measure the distance from low steel to the bottom of the foot marks.

Responsibility of the owner does not cease upon installation of the prescribed clearance gauge. Provision for maintaining the clearance gauge prescribed herein should be included in the planning for initial installation. A continuing program of inspection and maintenance is necessary to ensure that the clearance gauge is accurate and properly displayed.

This is enclosure (3) to CGD8 (dwb) ltr dated May 19, 2010

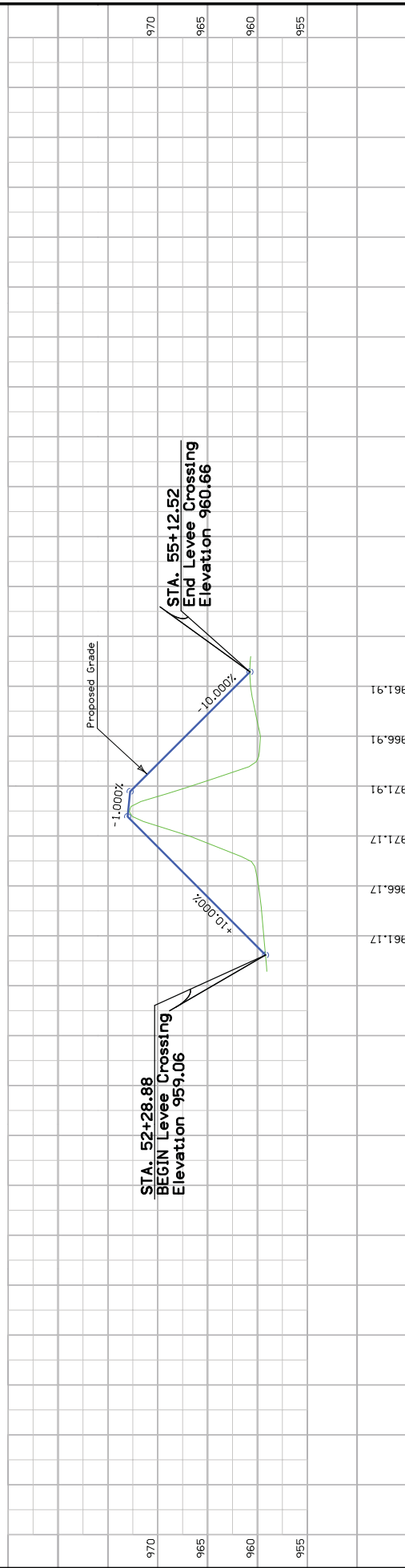


Station	Elevation	Notes
10+00	958.32	
10+20	958.29	
10+40	960.12	
10+60	965.12	
10+80	961.61	
11+00	970.12	
11+20	970.49	
11+40	970.94	
11+60	966.57	
11+80	959.39	
12+00	958.96	
12+20	959.19	
12+40	959.57	
12+60	959.19	
12+80	959.57	
13+00	959.19	
13+20	959.57	
13+40	959.19	
13+60	959.57	
13+80	959.19	
14+00	959.57	



TEMPORARY LEVEE CROSSING

From Sta. 52+28 to Sta. 55+12			
Select Sand Fill + 25%	1,777 CY	Cut	0 CY
Total	1,777 CY	Select Sand from Borrow	1,777 CY
		Total	1,777 CY



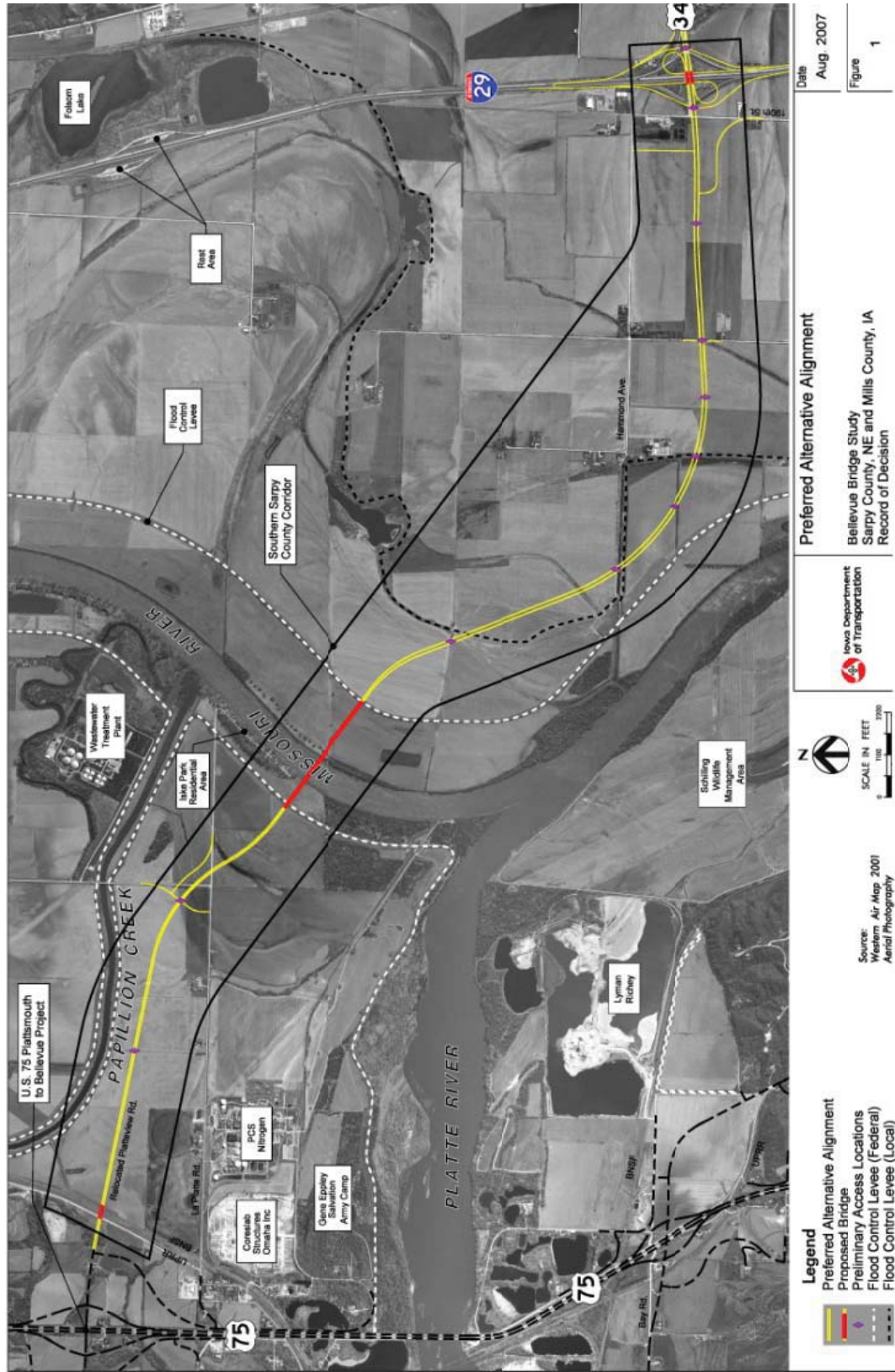
ENGLISH	IDW DOT	DESIGN TEAM	Skogerboe/Holst/Ross	MILLS	COUNTY	PROJECT NUMBER	NHSX-534-1(80)--3H-65	SHEET NUMBER	F.01
---------	---------	-------------	----------------------	-------	--------	----------------	-----------------------	--------------	------

US-34 Bridge Construction Pre-Bid Meeting

Project Numbers NHSX - 534 - 1(68) - - 3H - 65
NHSX 534 - I(84) - - 3H - 65

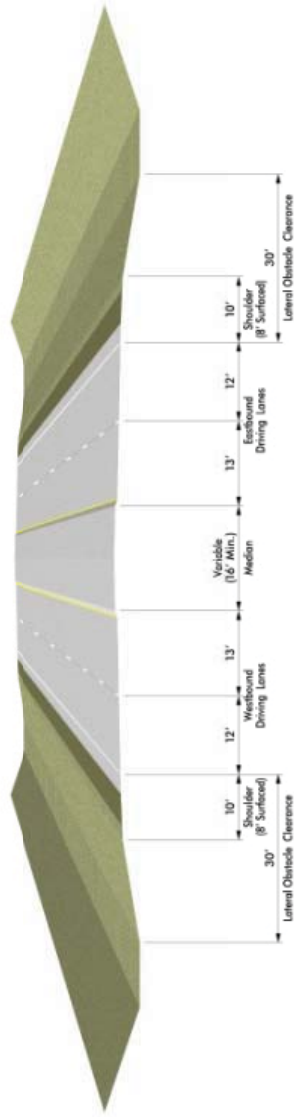
June 20, 2011

Project Alignment

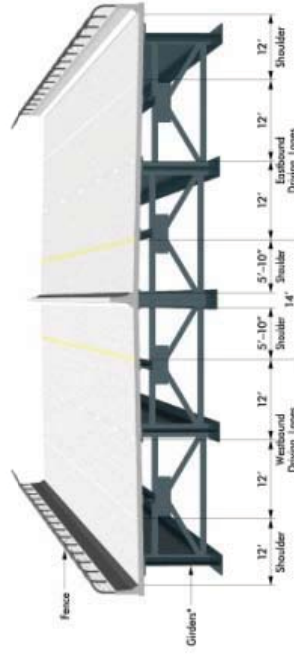


Missouri River Bridge

Typical Section – River Unit



West Terminus at U.S. 75 to the Missouri River (Nebraska)



* Girders type and spacing have not been determined. Shown for illustration purposes only.

Bridge over the Missouri River

Typical Sections - Nebraska Bellevue Bridge Study Sarpy County, NE and Mills County, IA Record of Decision	Date Aug. 2007
	Figure 2

Missouri River Bridge

- Tangent Alignment; Normal Skew; 89'-5" Wide x 3276'-1" Long
- Unit 1 - Four-span Prestressed Beam Nebraska Approach
- Unit 2 - Three-span Haunched Steel Girders Over River
- Unit 3 - Five-span Prestressed Beam Iowa Approach
- Unit 4 - Six-span Prestressed Beam Iowa Approach
- Concrete Seal Coats (tremie seals) for all piers between levees
- Inspection Catwalk for Haunched Steel Girder River Unit
- Washdown Piping In Unit 2
- Solar Navigation Lighting
- HP14 x 89 piles for Approach Piers and Abutments
- 48" Diameter Open Ended Pipe (OEP) Piles at River Piers 5 & 6
- Compliance with Environmental "Green Sheet" requirements

Missouri River Bridge

Special Provisions /Developmental Specification List

- DS for High Performance Concrete for Structures (Council Bluffs System)
- SP for Mass Concrete – Control of Heat of Hydration
- SP for Maintenance Water Line
- SP for Electronic Submittals
- SP for Open Ended Pipe Piles
- SP for Environmental Protection

Missouri River Bridge

Haunched Steel Girder River Unit

- 391' - 515' - 391' Spans
- Girder and Substringer System
- Maximum 24' deep girders at piers; 16'-8" deep otherwise

Missouri River Bridge

Open Ended Pipe (OEP) Piles

- Pay items for “Demonstration Pile”, “Open Ended Pipe Piles, 48” Diameter” and “OEP Dynamic Testing”
- Demonstration Pile near Pier No. 5 will determine pile order lengths
- Dynamic Pile Driving Analyzer and CAPWAP on Demonstration and Production Piles to determine bearing capacity
- Submittals include:
 - Submittal of proposed hammer data & wave equation analysis
 - Demonstration Pile Report
 - Dynamic Pile Driving / CAPWAP reports
- OEP Piles will require partial removal of soil within piles, placing of reinforcing steel and backfilling with concrete
- No driving of piles within 50’ of another pile for 12 hours after concrete placement

Missouri River Bridge

Work adjacent to Levees

- West Abutment Piles require 60 day delay after fills placed (by others)
- East Abutment Piles require 120 day delay after fills placed (by others)
- Critical zone of levees is 300 foot (wet side) and 500' (dry side)
- Clay layer repair required for excavations within critical zone
- Access ramps over levees will be constructed and removed by grading contractors.

Missouri River Bridge

Environmental “Green Sheet” Requirements

- Cofferdam Installation / removal & pile driving in Missouri River restricted to July 1st through January 31st (pallid sturgeon).
- Spill kits & trained personnel required on site to contain accidental spills during construction.
- Tree clearing may not occur from December 15th through February 20th to minimize impacts to bald eagles or from April 15th – September 15th in Iowa to protect Indiana Bat habitat. Tree clearing shall be minimized to the extent possible.
- No construction activities from April 1st – July 15th where active bald eagle nests are present.
- Any clearing and grubbing or earthwork scheduled between February 15th and July 15th will require a survey for active bald eagle nests conducted 60-90 days before beginning construction.
- Drainage borrow pits in Nebraska require consultation with USFWS.

Missouri River Bridge

Other Environmental Requirements

- All work barges inspected for zebra mussels
- No temporary earthen causeway allowed in river
- Notify US Army Corps of Engineers prior to construction / removal of temporary works (falsework towers, cofferdams etc.)
- Temporary dredging is allowed for temporary barge slips subject to water quality testing.
- Native materials may be returned to cofferdams; any other new fill must be clean (less than 10% fines passing the # 200 sieve).

US 34 Eastbound over I-29

- Aesthetic enhancements include wall piers with planter and terrace wall at east abutment
- Terrace wall utilizes lightweight expanded polystyrene backfill
- 4-span Prestressed Concrete Beam construction
- Tapered deck
- Staged w/ existing bridge



US 34 Eastbound over I-29

Special Provision / Developmental Specification List

- DS for High Performance Concrete for Structures (Council Bluffs System)
- SP for Mass Concrete – Control of Heat of Hydration
- Special Provision for Expanded Polystyrene Fill
- Special Provision for Imperveous Geomembrane

Questions??

Minutes for Relocated US 534 over the Missouri River Bridge Pre-Bid Meeting

- Letting Date is July 19, 2011. Bids must be received 10:00 AM and may only be submitted at the Office of Contracts in Ames.
- Requests for bidding documents must be submitted by noon the day before the letting, July 18, 2011 to the Contracts Engineer or the Assistant Contracts Engineer.
- There are currently 10 bid holders for bid order 079:
 1. AMES CONSTRUCTION, INC.
 2. CRAMER AND ASSOC., INC.
 3. HAWKINS CONSTRUCTION CO.
 4. KIEWIT INFRASTRUCTURE CO.
 5. WALSH CONSTRUCTION COMPANY
 6. ARCHER WESTERN CONTRACTORS, LTD.
 7. CLARKSON CONSTRUCTION CO.
 8. JENSEN CONSTRUCTION CO.
 9. MASSMAN CONSTRUCTION CO.
 10. TRAYLOR BROS., INC.

There is 2.5% DBE Goal.

- The Contract Period on page 2 of the Proposal Details
- Design Information – Phil Rossbach of HDR

Questions and Answers:

1. How close to the bridge can an eagle's nest be located? If an eagle's nest is found "within the active work area" of the bridge, work will be affected.
2. Clarify restriction for cofferdam installation. The restriction for pallid sturgeon begins July 1 through January 31. Piers 5 and 6 are included.
3. What constitutes in the Missouri River? From bank to bank.
4. What are the restrictions on clearing trees? For eagles, from December 15 through February 20. For Indiana bats, from April 15 through September 15.
5. How long is concrete required to cure? 96 hours for everything.
6. Comment - Stay in place forms should be considered by Iowa.
7. Will horizontal splice joints be allowed for the main steel girder spans? No, for cost reasons and other technical reasons as well.
8. Where is the bridge approach tabulation for the Nebraska side? Nebraska doesn't have a tabulation for bridge approaches. Use the Nebraska DOR's standards for their bridge approach construction.

9. Is the clay blanket information complete? Pier 17 will be added by addendum. New notes will be added also.
10. Concrete seal coat thickness seems over-designed? See addendum.
11. Can language be added that says if the water elevation is over a certain height, working days will be suspended? See addendum.
12. In the SP-090128 on page 7, reinforcing steel is listed in the payment section, is this correct? See addendum.
13. Can the COE and Coast Guard permits be added to the addendum? Yes.
14. Can you include access ramp details for levees on both sides of the river in the addendum? Yes.

**MILLS COUNTY
RELOCATED US 34 OVER MISSOURI RIVER
NHSX-534-1(68)--3H-65**

NAME	COMPANY	E-Mail Address	PHONE #
ROGER BIERBAUM	IOWA DOT	ROGER.BIERBAUM@DOT.IOWA.GOV	515-239-1414
JERRY EGAN	ARCHER WESTERN Contractors	jegan@walshgroup.com	312-563-5400
Bruce Williams	Walsh Construction Company	bwilliams@walshgroup.com	312-563-5400
KELE SMITH	AMBASSADOR		515-262-2000
Tim Polk	ARCHER WESTERN CONTRACTORS	TPOLK@WALSH GROUP.COM	312-563-5400
SCOTT TURNPAUGH	TRAYLOR BROS., INC	stturnpaugh@traylor.com	281-549-4475
Kurt Estrem	IDOT	Kurt.estrem@dot.iowa.gov	515-239-7740
STEVE SANDQUIST	UNITED CONTRACTORS	STEVESANDQUIST@UNITEDCONTRACTORS.NET	515-276-6162
CHUCK KADLECEK	UNITED CONTRACTORS	CHUCKKADLECEK@UNITEDCONTRACTORS.NET	515-276-6162
Robert Cramer	Cramer + Assoc. Inc	rcramer@cramerandassociatesinc.com	515-265-1447

**MILLS COUNTY
RELOCATED US 34 OVER MISSOURI RIVER
NHSX-534-1(68)--3H-65**

NAME	COMPANY	E-Mail Address	PHONE #
STEVE MAIFIELD	IA DOT	STEVE.MAIFIELD @DOT.IOWA.GOV LOWRY	
RYAN CHEESEMAN	JENSEN CONSTRUCTION	R.CHEESEMAN @ JENSENCONST.COM	515-266-5173
DAVID DUKE	Ames Construction	Davidduke @ Amesco.com	612-360-4849
Dennis Drews	Coreslab Structures	delnews @ Coreslab.com	402-291-0733
Jim Gregory	Hawkins Const	JGREGORY@ HAWKINS1- COM	402-221-2625
ROD OTO	AGC IOWA	rott@agcia. org	515-283-2424
Ahmad Abu-Hawash	Iowa DOT	ahmad.abu-hawash @dot.iowa.gov	239-1393
SCOTT MACIEWICZ	KLEINFELDER	Smackiewicz@ Kleinfelder.com	816-289-9292
Ron MEYER	IA DOT	Ronald.Meyer @dot.iowa.gov	239-1737
Jason Strum	IA DOT	Jason.strum @dot.iowa.gov	233-7867

**MILLS COUNTY
RELOCATED US 34 OVER MISSOURI RIVER
NHSX-534-1(68)--3H-65**

NAME	COMPANY	E-Mail Address	PHONE #
GEO. FENZEL	IOWA DOT	george.fenzel@dot.iowa.gov	712-243-7628
PHIL ROSSBACH	HDR	phil.rossbach@hdrinc.com	402-399-1065
KYLE ALLEN	MASSMAN CONSTRUCTION CO	KALLEN@MASSMAN.NET	816-523-1000
Wayne Sunday	IOWA DOT	wayne.sunday@dot.iowa.gov	515-239-1185
Ron Spooner	P.D.M. BRIDGE	@D.W.X.COM rspooner	515-331-1482
DAN TIMMONS	JENSEN CONST	dtimmons@jensenconst.com	515-266-5173
JEFF KOVAR	ISC BRIDGE	JKOVAR@ISCBRIDGE.COM	708-922-6167
Mike Ronning	Danny's Construction	mronning@dannysconstruction.com	612-812-3126
Bob Stanley	IA DOT Soils Design	Robert.Stanley@dot.iowa.gov	515-239-1026
BRUCE FLIPPIN	IA DOT Council Bluffs REC	bruce.flippin@dot.iowa.gov	712-366-0568