



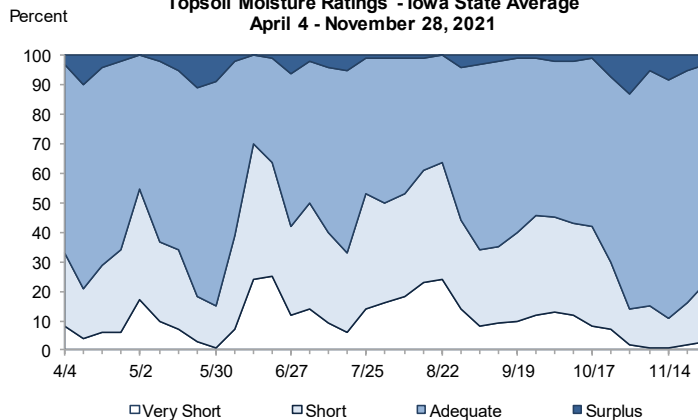
2021 IOWA CROP PROGRESS REVIEW

The Crop Progress and Condition Report is made possible by the dedication of the many farmers, FSA, NRCS, Extension, and agribusiness personnel who provide information each week. Thank you for your help!

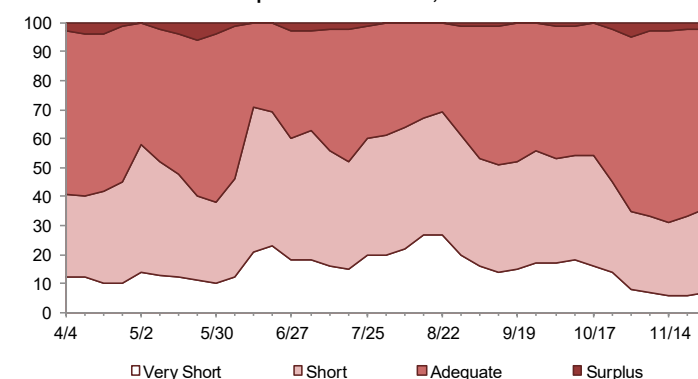
Review of the 2021 Crop Year:

Precipitation and cool temperatures in April delayed fieldwork and planting activities; however, by early May farmers had made significant progress in field work. Much of Iowa needed additional precipitation at this point in the season. Planting of corn was virtually complete by May 23 with 97 percent of the expected crop in the ground, two weeks ahead of the 5-year average. By the end of May, soybean planting was nearing completion at 93 percent, 12 days ahead of average. For most stages, corn development remained ahead of average throughout the season. Soybean development was ahead of the five-year average at every stage of the season. Many parts of the State saw drier than normal conditions for much of the growing season. By August 17, large areas of central and northern Iowa were experiencing severe or extreme drought, according to the U.S. Drought Monitor. Widespread precipitation the week ending September 7 improved conditions. Northern Iowa received well above normal precipitation in the latter half of August and early September which lessened the severity of drought conditions in the area. Iowa corn for grain and soybean harvests began during the week ending September 19. Soybean harvest reached 70 percent complete by October 17, one week ahead of the average. More than half of the corn for grain was harvested by October 24, reaching 60 percent. By the last week of November only scattered fields across the State remained to be harvested. With harvest complete, farmers were busy with fall tillage, fertilizer or manure applications, hauling grain and starting to put machinery away for the winter.

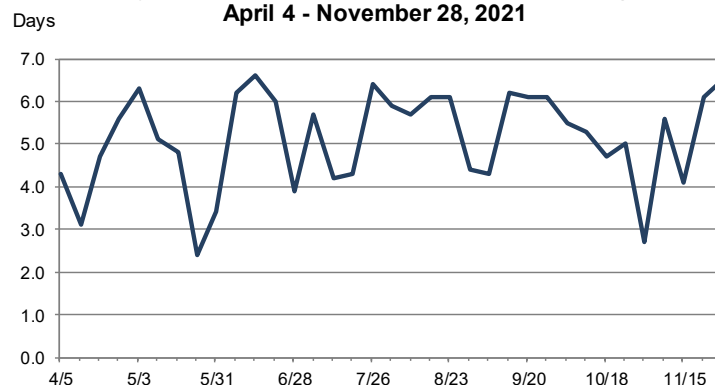
Topsoil Moisture Ratings - Iowa State Average
April 4 - November 28, 2021



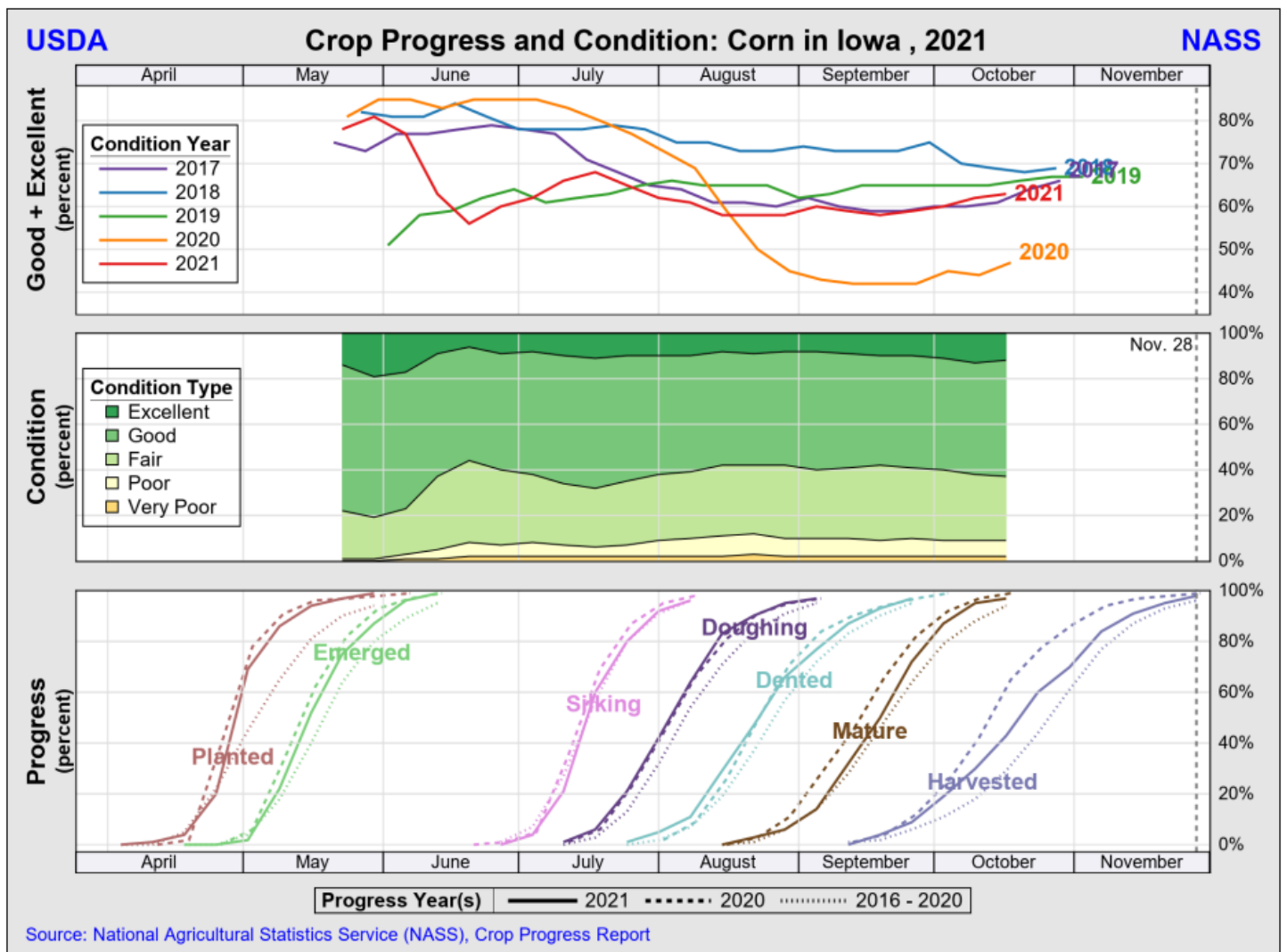
Subsoil Moisture Ratings - Iowa State Average
April 4 - November 28, 2021



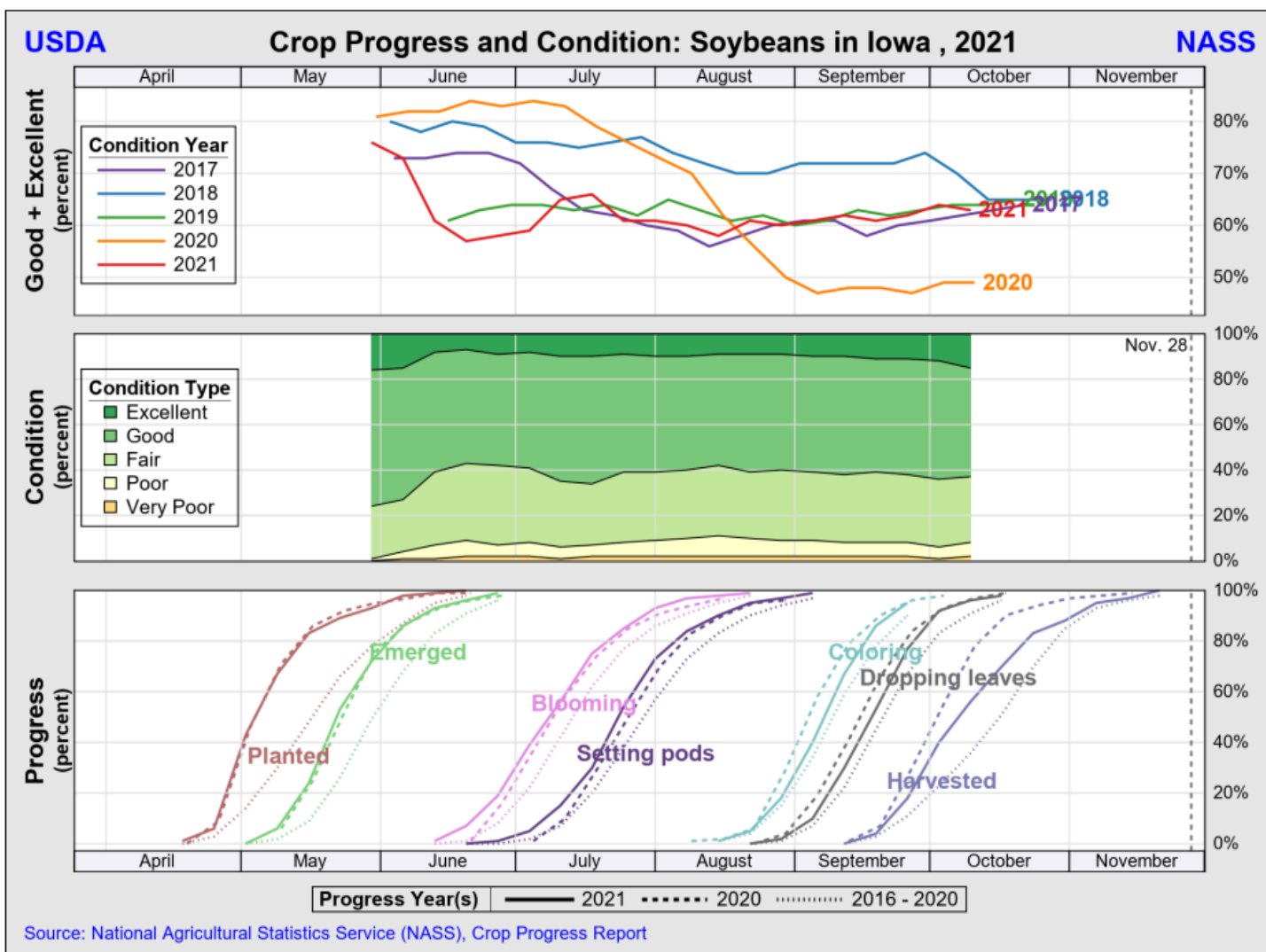
Days Suitable for Fieldwork - Iowa State Average
April 4 - November 28, 2021



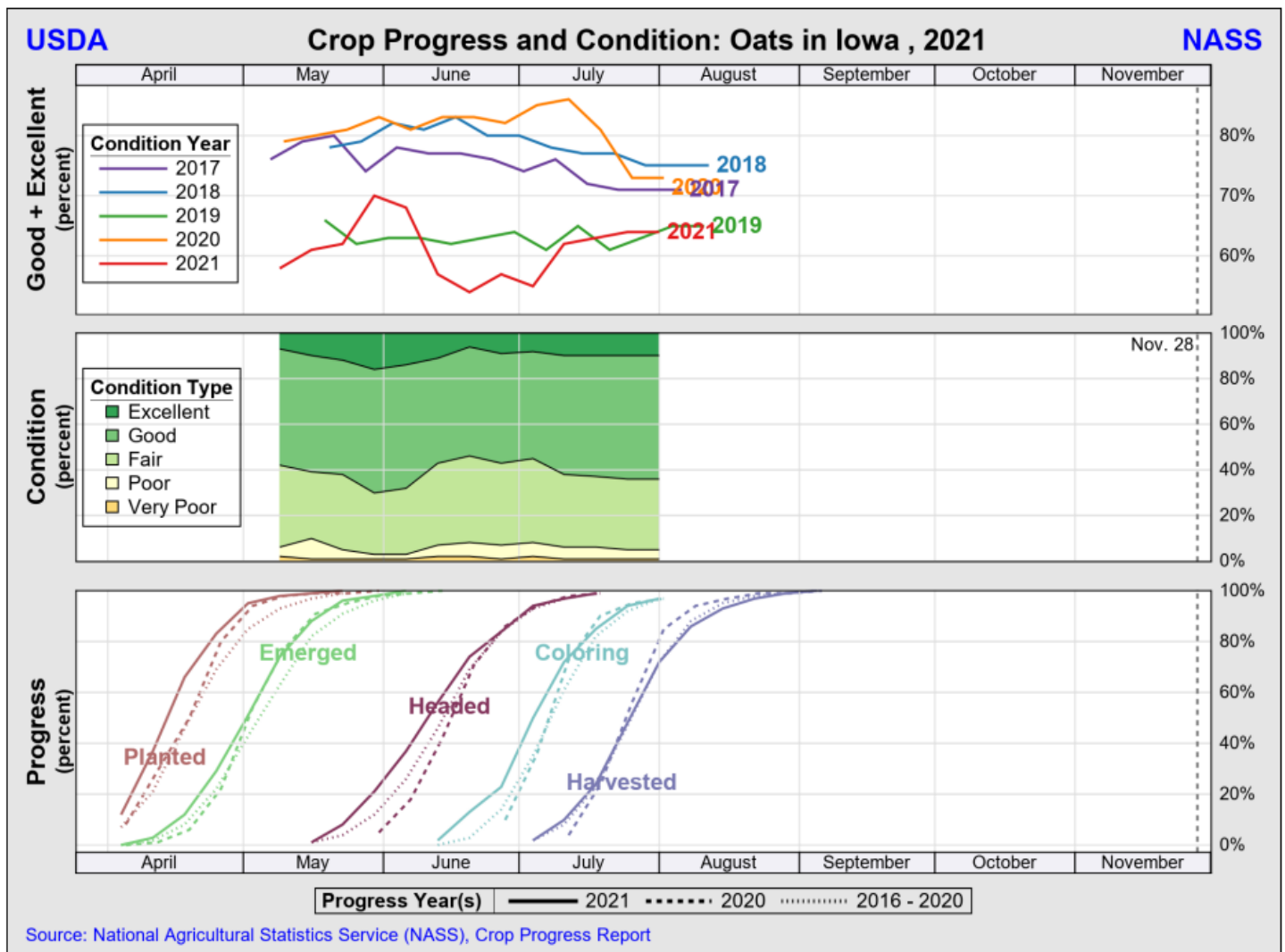
Corn planting in Iowa began in early April. Almost half of the State's expected corn crop was planted during the week ending May 2, reaching 69 percent planted. By the end of May planting was nearly complete and emergence was not far behind at 87 percent. Ninety-nine percent of the corn crop had emerged by June 13. Corn silking was slightly ahead of the five-year average at 60 percent by July 18. The percent of corn in or beyond the dough stage was ahead of average throughout the stage. Dent was also ahead of average throughout the stage. Dent was also ahead of average throughout the stage. Virtually all of the corn crop had reached maturity by October 17, at 97 percent. Corn for grain harvest began in mid-September. Dry conditions enabled corn harvest to proceed ahead of the five-year average throughout the season in most areas of the State. By mid-November 91 percent of the corn crop was harvested and only farmers in south central Iowa had over 20 percent of their corn for grain remaining to be harvested. As November came to a close 98 percent of the State's corn crop had been harvested. Corn moisture levels for field corn being harvested were reported at 23 percent the last week in September, gradually falling to 16 percent by November 21. The first condition rating of the corn crop on May 23 was 78 percent good to excellent. Corn condition declined to 61 percent good to excellent by the second week of August, then remained fairly consistent through the remainder of the crop season, ending at 63 percent good to excellent on October 17.



Soybean planting began in late April and made rapid progress during the last week of the month with over one-third of the soybean crop planted by May 2, 12 days ahead of the five-year average. Soybean planting was virtually complete by the first week of June. The week ending May 23 saw soybean emergence jump 29 percentage points to 53 percent, nine days ahead of the average. Nearly all of the crop had emerged by June 20, one week ahead of the average. By July 18, 75 percent of soybeans had started to bloom and 30 percent of the crop was setting pods, both several days ahead of the average. Leaves turning color reached 67 percent on September 12, three days ahead of the average. Harvest began in mid-September and by October 10 more than half of Iowa's soybean crop had been harvested, 9 days ahead of the average. Soybean harvest was virtually complete, at 97 percent, on November 14. As of May 30, the first condition rating of the soybean crop was 76 percent good to excellent. Crop conditions declined slightly but then remained fairly steady with around 60 percent rated good to excellent throughout much of the growing season. The final crop condition rating of the season was rated 63 percent good to excellent on October 10.



Oat seeding began in late March and by April 4 twelve percent of the expected oat crop had been planted, 4 days ahead of the 5-year average. By mid-April, two-thirds of the oat seeding had been completed. Seeding was virtually complete by May 16. By May 9 almost three-quarters of the oat crop had emerged. The oat crop was fully emerged by June 6. By mid-June more than half the oat crop had headed, 3 days ahead of normal. Oats turning color began 6 days ahead of average and remained ahead until August 1 when it dropped to 1 day behind average, at 97 percent complete. Twenty-four percent of oats for grain had been harvested by July 18, 1 day ahead of average. By August 29, virtually all oats had been harvested for grain at 99 percent complete statewide. Oat condition remained fairly consistent throughout the growing season, beginning with 58 percent rated good to excellent on May 9, and ending the season on July 25 with 64 percent rated good to excellent.



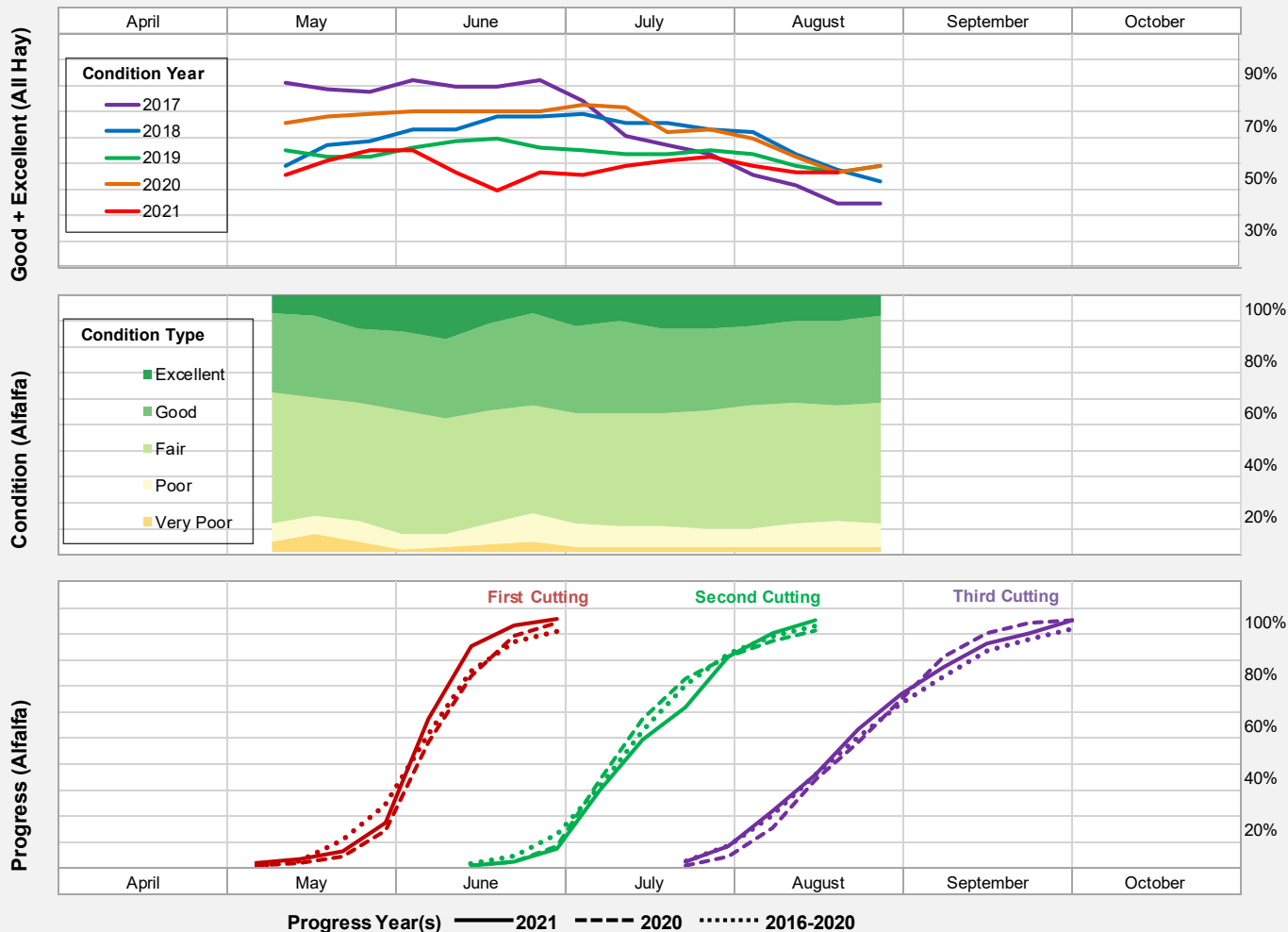
The first cutting of **alfalfa hay** was more than halfway complete by June 6, reaching 58 percent, 2 days ahead of the 5-year average. By June 27, the first cutting was nearly complete, 8 days ahead of average. The second cutting was 97 percent complete by August 8, four days ahead of average. The third cutting of alfalfa was more than two-thirds complete by August 22, three days ahead of average. By September 19, nearly all of the third cutting of alfalfa had been harvested at 97 percent complete statewide. Also by September 19, in some areas of the State, a fourth and fifth cutting of alfalfa hay was underway. During the season, hay condition averaged 57 percent good to excellent, with a high of 62 percent in late May and early June. The last crop condition rating of the season rated 55 percent good to excellent on August 15.



USDA

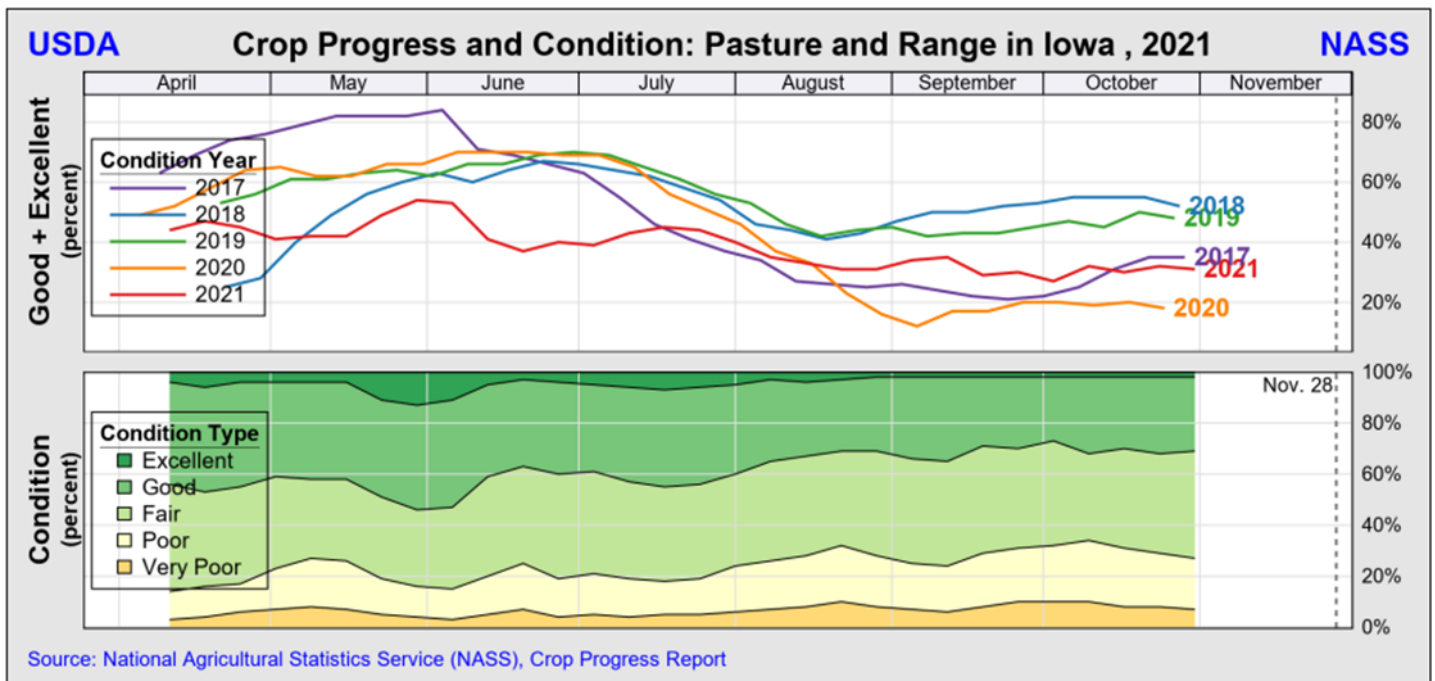
Crop Progress and Condition: Hay in Iowa, 2021

NASS



Source: National Agricultural Statistics Service (NASS), Crop Progress Report

Iowa's pastures were starting to green by early April. With adequate precipitation from mid- to late May, pasture condition reached a season high of 54 percent good to excellent as of May 30. June saw pasture conditions decline early in the month due to spotty rains. Pasture conditions averaged 43 percent good to excellent throughout July due to variable precipitation. Although the average pasture condition in August rated 33 percent good to excellent, by August 15 pastures stopped growing in some parts of the State due to lack of rain. The lowest rating of the season came on October 3 with 27 percent good to excellent. The final rating of the season on October 31 showed 31 percent good to excellent.



USDA-NASS Upper Midwest Regional Office

Phone: 800-772-0825

Fax: 855-271-9802

E-Mail: nassrfoumr@usda.gov

Greg Thessen, Director
Cindy Adamson, Deputy Director
Steve Maliszewski, Deputy Director

USDA is an equal opportunity provider and employer.

