

# IOWA OUTDOORS

THE DNR'S MAGAZINE OF CONSERVATION AND RECREATION

NOVEMBER / DECEMBER 2016



A SEASON FOR ALL

# KEOKUK

IOWA

Iowa's Only National Cemetery  
Winter Home for Bald Eagles  
Mark Twain Historic Sites  
Year-round Birding Trail  
Architectural Splendor  
Hunt Keokuk Geodes  
Historic Lock & Dam  
Museums



Sons of the  
Pioneers  
The Grand Theatre  
Jan. 21, 2017  
7:30 PM



33rd Bald Eagle  
Appreciation Days  
Jan. 21-22, 2017  
Fun for the  
Entire Family!

A large concentration of Bald Eagles call Keokuk their winter home. View eagles feeding and roosting along the banks of the Mississippi River.

KEOKUK AREA CONVENTION  
& TOURISM BUREAU  
[www.KeokukIowaTourism.org](http://www.KeokukIowaTourism.org)  
319.524.5599

# Experience Carroll!



LOOKING FOR FUN? CARROLL HAS FISHING,  
CAMPING, HUNTING, SNOWMOBILING, SWIMMING,  
BALL GAMES, AND TENNIS COURTS... JUST TO NAME A FEW!

BIKE OR HIRE THE SAUK RAIL TRAIL,  
A 33 MILE PAVED TRAIL THAT WINDS  
THROUGH SCENIC SWAN LAKE STATE PARK.



Carroll  
Chamber  
of Commerce  
712-792-4383

[WWW.CARROLLIOWA.COM](http://WWW.CARROLLIOWA.COM)

## Cruising the Heartland of America

### 1 & 2-Day Mississippi River Cruises

The Twilight is the most richly appointed Riverboat to be launched in a hundred years. Reminiscent of the Riverboats Mark Twain called "Floating Palaces", the Victorian steamboat architecture inside and out pleases the eye. Let our Captain be your guide to discovering the Upper Mississippi River; home to Eagles, Pelicans, towering bluffs, and historic river towns. Come aboard and step back into time when the riverboat was the most elegant and relaxing way to travel.

Call 1-800-331-1467  
[www.RiverboatTwilight.com](http://www.RiverboatTwilight.com)

**2-DAY CRUISE**  
Departs Quad Cities, Overnight  
in Dubuque, IA & Return

**1-DAY CRUISE**  
Departs Dubuque North to  
Guttenberg, IA & Return

ABOARD THE RIVERBOAT  
**TWILIGHT**  
Cruising May through October



BILL  
...  
\$24 FE  
...  
Federal  
...  
To cons  
with ind  
...  
We striv  
of Iowa  
and exp  
citizens  
...  
DNR vol  
waters  
...  
Charitab  
enhance  
...  
Support  
and vehi  
pleasur  
...  
I. Public  
Published  
Minn. IA  
50119-9  
502 E. 9th  
10-Owner  
ers Owni  
Issue Date  
...  
Each Issue  
Circulation  
No. Copies  
Subscriptions  
No. Copies  
USPS Post  
or (4) Other  
Nearest to  
12 Months  
other fr  
Published  
of Single  
Months: 0  
No. Copies  
ion (Sum  
1.356. I  
Published  
of Single  
41.958. No  
Issue Dur  
Ownership  
or Own

# IOWA OUTDOORS

NOVEMBER / DECEMBER 2016 • VOLUME 75 • ISSUE 6

## STAFF

Brian Button - **EDITOR-IN-CHIEF** • Alan Foster - **MANAGING EDITOR**  
Jacob Zweibohmer - **ART DIRECTOR** • Jessie Brown - **COPY EDITOR**  
Julie Tack - **MARKETING AND PUBLICITY**

**SUBSCRIBER SERVICES 800.361.8072**

## ADVERTISING OFFICE

Associations Inc, Tonya Vitzthum at 515-669-3010 or TVITZTHUM@ASSOCIATIONSINC.US

## DNR EXECUTIVE STAFF

Chuck Gipp - **DIRECTOR** • Bruce Trautman - **DEPUTY DIRECTOR**

## DIVISION ADMINISTRATORS

Bill Ehm - **ENVIRONMENTAL SERVICES** • Kelley Myers - **CONSERVATION AND RECREATION**

DNR Central Office, 515.725.8200 • TTY users contact Relay Iowa, 800.735.2942

Iowa Outdoors (ISSN 0021-0471) is published bimonthly by the Department of Natural Resources, 502 E. 9th St., Des Moines, IA 50319. Periodicals postage paid Des Moines, IA. **SUBSCRIPTION RATES: \$15 FOR ONE YEAR, \$24 FOR TWO YEARS AND \$30 FOR THREE YEARS. PRICES SUBJECT TO CHANGE WITHOUT NOTICE.** Include mailing label for renewals and address changes. **POSTMASTER:** Send changes to Iowa Outdoors, P.O. Box 37831, Boone, IA 50037-0831.

Federal and state regulations prohibit discrimination on the basis of race, color, national origin, sex or disability. State law also prohibits discrimination on the basis of creed, sexual orientation, gender identity, religion, pregnancy or public accommodation. If you believe that you have been discriminated against in any program, activity, or facility as described above, or for more information, write: Director, DNR, 502 E. Ninth St., Des Moines, IA 50319-0034 or the Equal Employment Opportunity Commission, Washington, D. C. 20240.

## DNR MISSION

To conserve and enhance our natural resources in cooperation with individuals and organizations to improve the quality of life for Iowans and ensure a legacy for future generations.

## EDITORIAL MISSION

We strive to open the door to the beauty and uniqueness of Iowa's natural resources, inspire people to get outside and experience Iowa and to motivate outdoor-minded citizens to understand and care for our natural resources.

## MAKE A DIFFERENCE

DNR volunteer programs help Iowans give back to lands, waters and skies. 515-725-8261 or [keepersoftheland.org](http://keepersoftheland.org).

## HOW TO DONATE

Charitable giving of land, funds, goods and services greatly enhances Iowa's outdoors. Call Kim Rasler at 515-725-8440.

## SHOW YOUR SUPPORT

Support wildlife diversity and REAP. Take your license plates and vehicle registration to your county treasurer's office to buy a pheasant, eagle, goldfinch, deer or trout natural resources plate.

## SUBSCRIBER SERVICES

To subscribe, or for any subscription issues or questions, call 1.800.361.8072 Monday through Friday from 7 a.m. to 11 p.m. or weekends 8 a.m. to 6 p.m. For ease in processing, please have an issue with a mailing label available at time of call. To purchase a single copy for \$5, call 515-725-8200.

## LEARN MORE

Buy licenses, reserve campsites or learn about our environment at [iowadnr.gov](http://iowadnr.gov). See our magazine television show at [iptv.org](http://iptv.org).



[facebook.com/iowadnr](https://www.facebook.com/iowadnr)  
[twitter.com/iowadnr](https://twitter.com/iowadnr)  
[pinterest.com/iowadnr](https://www.pinterest.com/iowadnr)



## United States Postal Service Statement of Ownership, Management, and Circulation.

1. Publication Title: Iowa Outdoors. 2. Publication Number: 268-780. 3. Filing Date: 9/30/16. 4. Issue Frequency: Bi-monthly. 5. Number of Issues Published Annually: 6. 6. Annual Subscription Price: \$15. 7. Complete Mailing Address of Known Office of Publication: (Not printer): 502 E. 9th, Des Moines, IA 50319. 8. Complete Mailing Address of Headquarters or General Business Office of Publisher (Not printer): 502 E. 9th, Des Moines, IA 50319. 9. Full Names and Complete Mailing Addresses of Publisher, Editor, and Managing Editor: Publisher, State of Iowa Dept. Natural Resources, 502 E. 9th, Des Moines, IA 50319; Editor, Brian Button, 502 E. 9th, Des Moines, IA; Managing Editor, Alan Foster, 502 E. 9th, Des Moines, IA 50319. 10. Owner: State of Iowa Dept. Natural Resources, 502 E. 9th, Des Moines, IA 50319. 11. Known Bondholders, Mortgagees, and Other Security Holders Owning or Holding 1 Percent or More of Total Amount of Bonds, Mortgages or Other Securities: None. 12. Publication Title: Iowa Outdoors. 13. Issue Date for Circulation Data Below: September/October 2016. 14. Extent and Nature of Circulation: a. Total Number of Copies: Average No. Copies Each Issue During Preceding 12 Months: 41,958; No. Copies of Single Issue Published Nearest to Filing Date: 42,000. b. Paid and/or Requested Circulation (1) Paid/Requested Outside-County Mail Subscriptions Stated on Form 3541 (Include advertiser's proof and exchange copies): Average No. Copies Each Issue During Preceding 12 Months: 38,759; No. Copies of Single Issue Published Nearest to Filing Date: 39,070. (2) Paid In-County Subscriptions Stated on Form 3541 (Include advertiser's proof and exchange copies): Average No. Copies Each Issue During Preceding 12 Months: 0; No. Copies of Single Issue Published Nearest to Filing Date: 0. (3) Sales Through Dealers and Carriers, Street Vendors, Counter Sales, and Other Non-USPS Paid Distribution: Average No. Copies Each Issue During Preceding 12 Months: 0; No. Copies of Single Issue Published Nearest to Filing Date: 0. (4) Other Classes Mailed Through the USPS: Average No. Copies Each Issue During Preceding 12 Months: 0; No. Copies of Single Issue Published Nearest to Filing Date: 0. c. Total Paid and/or Requested Circulation [Sum of 15b. (1), (2), (3), and (4)]: Average No. Copies Each Issue During Preceding 12 Months: 38,759; No. Copies of Single Issue Published Nearest to Filing Date: 39,070. d. Free Distribution by Mail (Samples, complimentary, and other free): (1) Outside-County as Stated on Form 3541: Average No. Copies Each Issue During Preceding 12 Months: 0; No. Copies of Single Issue Published Nearest to Filing Date: 0. (2) In-County as Stated on Form 3541: Average No. Copies Each Issue During Preceding 12 Months: 0; No. Copies of Single Issue Published Nearest to Filing Date: 0. (3) Other Classes Mailed Through the USPS: Average No. Copies Each Issue During Preceding 12 Months: 0; No. Copies of Single Issue Published Nearest to Filing Date: 0. (4) Free Distribution Outside the Mail (Carriers of other means): Average No. Copies Each Issue During Preceding 12 Months: 1,453; No. Copies of Single Issue Published Nearest to Filing Date: 1,356. e. Total Free Distribution (Sum of 15d.): Average No. Copies Each Issue During Preceding 12 Months: 1,453; No. Copies of Single Issue Published Nearest to Filing Date: 1,356. f. Total Distribution (Sum of 15c. and 15e.): Average No. Copies Each Issue During Preceding 12 Months: 40,212; No. Copies of Single Issue Published Nearest to Filing Date: 40,426. g. Copies not Distributed: Average No. Copies Each Issue During Preceding 12 Months: 1,746; No. Copies of Single Issue Published Nearest to Filing Date: 1,574. h. Total (Sum of 15f. and 15g.): Average No. Copies Each Issue During Preceding 12 Months: 41,958; No. Copies of Single Issue Published Nearest to Filing Date: 42,000. i. Percent Paid and/or Requested Circulation: Average No. Copies Each Issue During Preceding 12 Months: 96.3%; No. Copies of Single Issue Published Nearest to Filing Date: 96.6%. 15. Publication of Statement of Ownership Publication: Will be printed in the Nov./Dec. 2016 issue of this publication. 17. Signature and Title of Editor, Publisher, Business Manager, or Owner: Alan Foster—Managing Editor. Date: 9/30/16. I certify that all information furnished on this form is true and complete.

# Contributors

**GREG PUNELLI** lives in Saylorville Township in Polk County and is an avid photographer who loves photographing wildlife, nature and landscapes.



"I want to explore everything the state of Iowa has to offer. For me it's all about being outdoors and sharing my love of photography."

**JEFF TISL** has spent 29 years working with various agencies, most recently with the Iowa Department of Agriculture & Land Stewardship, to assist Iowans in conserving our soil and water resources. And after participating in a few photography workshops, Jeff, like many Iowans, has learned to also enjoy our state's natural beauty through the lens of a camera.

**BOB BUMAN** of Breda started photography in 1979 for enjoyment and relaxation. In the last eight years, he has focused on improving his skills of capturing landscape images. He has photographed flowers,



insects and landscapes across the north central and western states. Photography allows him to be inspired by nature. Bob works at Agren, Inc., an agricultural and environmental consulting firm.

**RON HUELSE** of Knoxville has spent twelve years photographing wildlife, insects and birds near Lake Red Rock when not cycling, hiking or volunteering. An avid paddler, he also helps find sponsors to reintroduce osprey locally and raises awareness of siltation issues at the reservoir. He's a recent retiree with "more hobbies than I have time for."



**YOUTH VARANGKOUNH** of Humboldt enjoys spending time outdoors while golfing, riding motorcycles, running and cycling. He stays busy with three young daughters and their activities. One of his favorite ways to relax is by spending time with his family on the lake. If they're not on the water, they're usually fishing on the dock. He works at Hy-Capacity, a tractor parts manufacturer also recognized as a zero-landfill waste company.



To further lower their environmental footprint, the company collects rainwater from the roof to wash and clean parts.

# State Record Fish



SPECIES	WEIGHT (LBS.-OZ.)	LENTH (IN.)	WATERBODY	COUNTY	DATE TAKEN	ANGLER	CITY
Bass (Largemouth)	10-12	23.5	Lake Fisher	Davis	5/1/1984	Patricia Zaerr	Davenport
Bass (Ocean Striped)	9-4	29	Rathbun Reservoir	Appanoose	7/1/1983	Richard Pauley	Centerville
Bass (Rock)	1-8	10.5	Pool 11, Mississippi	Dubuque	6/1/1973	Jim Driscoll	Dubuque
Bass (Smallmouth)	7-12	22.75	West Okoboji Lake	Dickinson	9/1/1990	Rick Gray	Dickinson
Bass (Spotted)	2-0	16.0	Coralville Reservoir	Johnson	5/7/2013	James Steffen	Solon
Bass (White)	4-3	18.7	Big Spirit Lake	Dickinson	5/7/2011	Josh Zylstra	Laurens
Bass (Wiper)	19-10	33	Saylorville Reservoir	Polk	8/29/2005	Youa Lovan	Des Moines
Bass (Yellow)	1-9	12.7	Siems County Park	Kossuth	2/14/2015	Justin Friedrich	Algona
Bass (Yellow)	1-9	14.5	Lake Manawa	Pottawattamie	4/1/1991	Bill Campbell	Council Bluffs
Bass (Yellow)	1-9	13.5	Lake Anita	Cass	5/1/2000	Michael Gradick	Underwood
Bowfin/Dogfish	11-9	31.5	Pool 10, Mississippi	Clayton	5/1/1994	Bill Greten	Blue Grass
Buffalo (Bigmouth)	64-6	41.5	Lake Manawa	Pottawattamie	4/18/2007	Ronald Anderson	Omaha, NE
Buffalo (Black)	63-6	48.5	Pool 9, Mississippi	Allamakee	8/14/1999	Jim Winters	Jesup
Buffalo (Smallmouth)	8-3	24.6	Pool 11, Mississippi	Dubuque	8/13/2015	Miranda Eipperle	Peosta
Bullhead (Black)	5-8	22	Farm Pond	Hamilton	6/1/1986	Michael Hurd	Ellsworth
Bullhead (Brown)	1-4	12.5	Pool 9, Mississippi	Allamakee	8/24/2015	Dick Newcomer	Harpers Ferry
Bullhead (Yellow)	1-10	13.5	Twelve Mile Lake	Union	4/16/2016	Xavier Jones	Ankeny
Carp (Bighead)	93-8	56	Rathbun Reservoir	Appanoose	6/15/2012	Larry Sparks	Mystic
Carp (Common)	67-0	48.5	Viking Lake	Montgomery	7/8/2006	Mike Miller	Council Bluffs
Carp (Silver)	40	42.5	Farm Pond	Wapello	5/10/2016	Randy Conover	Eldon
Catfish (Blue)	101-0	53	Missouri River	Mills	6/8/2004	Mike Rush	Bellevue, NE
Catfish (Channel)	38-2	40	Missouri River	Pottawattamie	6/11/2005	Dustin Curtis	Omaha, NE
Catfish (Flathead)	81-0	52	Ellis Lake	Lucas	6/1/1958	Joe Baze	Chariton
Crappie (Black)	3-14	18	Three Mile Lake	Union	6/5/2013	Dale Klein	Omaha, NE
Crappie (White)	4-9	21.25	Green Castle Lake	Marshall	5/1/1981	Ted Trowbridge	Marshalltown
Freshwater Drum	46-0	38.5	Big Spirit Lake	Dickinson	10/1/1962	R.F. Farran	Clarion
Gar (Longnose)	20-13	57.25	Pool 13, Mississippi	Jackson	7/19/2014	Doug Griebel	Bellevue
Gar (Shortnose)	7-2	34	Roberts Creek Lake	Marion	4/9/2012	Pat Antelman	Altoona
Goldeye	2-15	20	Pool 10, Mississippi	Clayton	8/20/2004	Scott Kinkead	Central City
Mooneye	11 oz.	13	Upper Iowa River	Allamakee	9/25/2015	Royce Bowman	Bellevue



# State Record Fish *(continued)*



SPECIES	WEIGHT (LBS.-OZ.)	LENGTH (IN.)	WATERBODY	COUNTY	DATE TAKEN	ANGLER	CITY
Muskellunge	50-6	52.5	Big Spirit Lake	Dickinson	8/21/2000	Kevin Cardwell	Spirit Lake
Muskellunge (Tiger)	27-2	47	West Okoboji Lake	Dickinson	8/1/1989	Shannon Green	Spencer
Northern Pike	25-5	45	West Okoboji Lake	Dickinson	2/1/1977	Allen Forsberg	Albert City
Paddlefish	107-0	69.5	Missouri River	Pottawattamie	3/1/1981	Robert Pranschke	Onawa
Redhorse (Silver)	4-8	22	Des Moines River	Boone	5/5/2014	Jarrad Pike	Boone
Sauger	6-8	25	Missouri River	Pottawattamie	10/1/1976	Mrs. W. Buser	Sloan
Saugeye	12-4	29.5	Des Moines River	Polk	3/1/2000	Don Ostergaard	Des Moines
Sturgeon (Shovelnose)	12-0	33	Des Moines River	Van Buren	4/1/1974	Randy Hemm	Douds
Sucker (Blue)	15-6	33.25	Iowa River	Johnson	4/11/2011	Steven Jones	Iowa City
Sucker (Northern Hogsucker)	15.6 oz.	13.5	Upper Iowa River	Winneshiek	8/11/2015	Dick Newcomer	Harpers Ferry
Sucker (White)	2-14	19	Big Creek Lake	Polk	6/27/2011	Kurt Brugioni	Ankeny
Sunfish (Bluegill)	3-2	12.88	Farm Pond	Madison	7/1/1986	Phil Algreen	Earlham
Sunfish (Green)	2-1	12.5	Farm Pond	Marion	7/29/2000	Ralph Mayer	Knoxville
Sunfish (Pumpkinseed)	12.8 oz.	10	Farm Pond	Pottawattamie	7/15/2016	Heather Schoening	Council Bluffs
Sunfish (Redear)	2-1	13.13	Farm Pond	Wapello	9/27/2013	Jeff Kokemiller	Ottumwa
Sunfish (Warmouth)	11.8 oz.	9.0	Farm Pond	Taylor	7/26/2016	Travis Cavin	Bedford
Trout (Brook)	7-0	19.75	Fountain Springs	Delaware	7/1/1996	Doug Korvarik	Marion
Trout (Brown)	15-6	29	North Prairie Lake	Black Hawk	6/1/1995	Gerold Lewis	Gladbrook
Trout (Rainbow)	19-8	35	French Creek	Allamakee	7/1/1984	Jack Renner	Waterloo
Walleye	14-8	30.5	Des Moines River	Polk	9/1/1986	Gloria Eoriatti	Ankeny
White Amur (Grass Carp)	85-8	48	Greenfield Lake	Adair	5/1/2007	Jesse Lane	Greenfield
Yellow Perch	2-7	16	Pool 12, Mississippi	Dubuque	3/13/2012	Travis Peterson	Dubuque





IOWA

December

# December 2016

# IOWA OUTDOORS

THE DNR'S MAGAZINE OF CONSERVATION AND RECREATION

SUNDAY	MONDAY	TUESDAY	WEDNESDAY	THURSDAY	FRIDAY	SATURDAY
	<p><b>ON THE COVER:</b> A wary ringnecked pheasant casts an eye for danger. Populations the last two years are similar to 2007 when 630,000 roosters were harvested, says DNR biologist Todd Bogenschutz. "Last year we harvested 270,000 roosters, the difference is we had twice the hunters in '07." The birds are there, the hunters aren't, so get a license and get out. BY RON HUELSE</p>				1	2
4	5	6	<p>Give Iowa Outdoors as a holiday gift—order at <a href="http://iowaoutdoorsmagazine.com">iowaoutdoorsmagazine.com</a>.</p>	<p>Muskie season closed on all Minnesota border lakes, including the Iowa Great Lakes</p>	<p>Fall turkey gun/bow season closes Archery only turkey and deer seasons close</p>	<p>First shotgun deer season opens</p>
			7	8	9	10
			<p>Pearl Harbor Remembrance Day First shotgun deer season closes</p>			<p>Second shotgun deer season begins</p>
11	12		13	14	15	16
		<p>Geminid meteor shower peaks Dec. 13-14 with up to 120 meteors per hour</p>	<p>Christmas Bird Count through Jan. 5; <a href="http://audubon.org">audubon.org</a></p>	<p>2017 hunting and fishing licenses go on sale</p>		17
18	19		20	21	22	23
<p>Second shotgun deer season closes</p>	<p>Late split deer and fall turkey bow season reopens Late muzzleloader deer season begins</p>		<p>Winter solstice—first day of winter</p>			<p>Nonresident antlerless deer holiday season, Dec. 24 – Jan. 2.</p>
25	26	27	28		29	30
<p>Christmas Hanukkah begins</p>		<p>Ring in the New Year at Honey Creek Resort. For event details call 877-677-3344.</p>				<p>New Year's Eve</p>
31						



A Cooper's hawk rests after pursuing prey in front of the bird observation blind at Walnut Woods State Park in West Des Moines last January. These marvels of aviation can speed through dense forests in pursuit of small birds—their favorite meal.  
BY GREG PUNELLI

Give a gift magazine subscription! [IOWADNR.GOV](http://IOWADNR.GOV)



6 GREAT ISSUES FOR ONLY \$15

NOVEMBER

S	M	T	W	T	F	S
		1	2	3	4	5
6	7	8	9	10	11	12
13	14	15	16	17	18	19
20	21	22	23	24	25	26
27	28	29	30			

JANUARY 2017

S	M	T	W	T	F	S
1	2	3	4	5	6	7
8	9	10	11	12	13	14
15	16	17	18	19	20	21
22	23	24	25	26	27	28
29	30	31				

# 14th Annual Project AWARE - 2016

## Lower Des Moines River Watershed

### Volunteer Cleanup

**52 miles**  
on the Lower  
Des Moines River

**40 Tons**  
of trash (77% of  
which was recycled)

**82 sponsors**

**329 participants**



*Appreciated. Inspired. Fantastic. Worthwhile.*  
You have made a difference. That's how your generosity makes us feel.

**A BIG THANK YOU** TO THESE SPONSORS AND  
TO OUR VOLUNTEERS! WE COULDN'T DO IT WITHOUT ALL OF YOU!

#### PLATINUM PADDLE SPONSORS

Alliant Energy Foundation • Bridgestone Americas One Team, One Planet Spent Tire Program • Community Foundation of Van Buren County • Firestone Complete Auto Care • Flint Hills Resources IHR - Hydroscience & Engineering at The University of Iowa Iowa DNR - IOWATER, Rivers Programs • Iowa Flood Center State Hygienic Laboratory at The University of Iowa • Villages of Van Buren • Zanfel Laboratories, Inc.

#### GOLDEN YOKE SPONSORS

Ansell Protective Products • River Valley Lodge and Campground Rockwell Collins • University of Iowa Office of the State Archaeologist

#### SILVER STERN SPONSORS

Bug Soother • Eaton Corporation Community Involvement Team, Shenandoah Plant • Hy-Vee, Inc. • Iowa Whitewater Coalition Jefferson County Conservation Board • Lee County Conservation Board • Nathan and Jamie Lein • Paddle, Pedal & More • Prottzman Sanitation • River Basin Canoe & Kayak • Upper Iowa University Wapello County Fairgrounds



Mark your calendar for next year's event:  
**July 10-14, 2017**



[www.iowadnr.gov/aware](http://www.iowadnr.gov/aware)





**EXPLORE** what's happening in Iowa's Outdoors

**FOLLOW US ON**  
Facebook,  
Twitter and *Pinterest!*



[facebook.com/iowadnr](https://facebook.com/iowadnr)  
[twitter.com/iowadnr](https://twitter.com/iowadnr)  
[pinterest.com/iowadnr](https://pinterest.com/iowadnr)



**605.660.6566**  
[antelopecreekwp.com](http://antelopecreekwp.com)

**Wildlife, Habitat,  
Pond, Fishery & Land  
Management**



*Expert Service from Brett Kleinschmit*

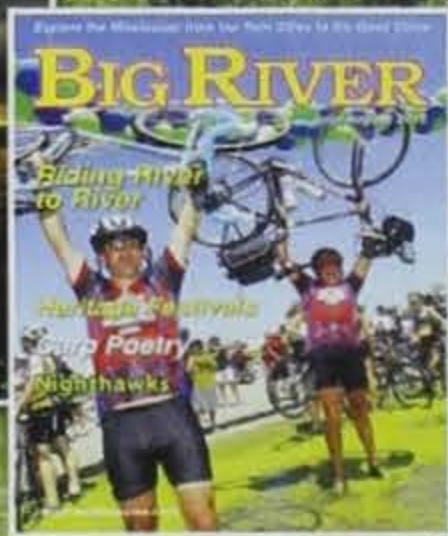
**TRAVEL IOWA  
ENJOY THE RIDE**



515.963.0606  
[iowaconcretepaving.org](http://iowaconcretepaving.org)

515.965.4575  
[iowareadymix.org](http://iowareadymix.org)

**Bring the Mississippi River  
to your door all year!**

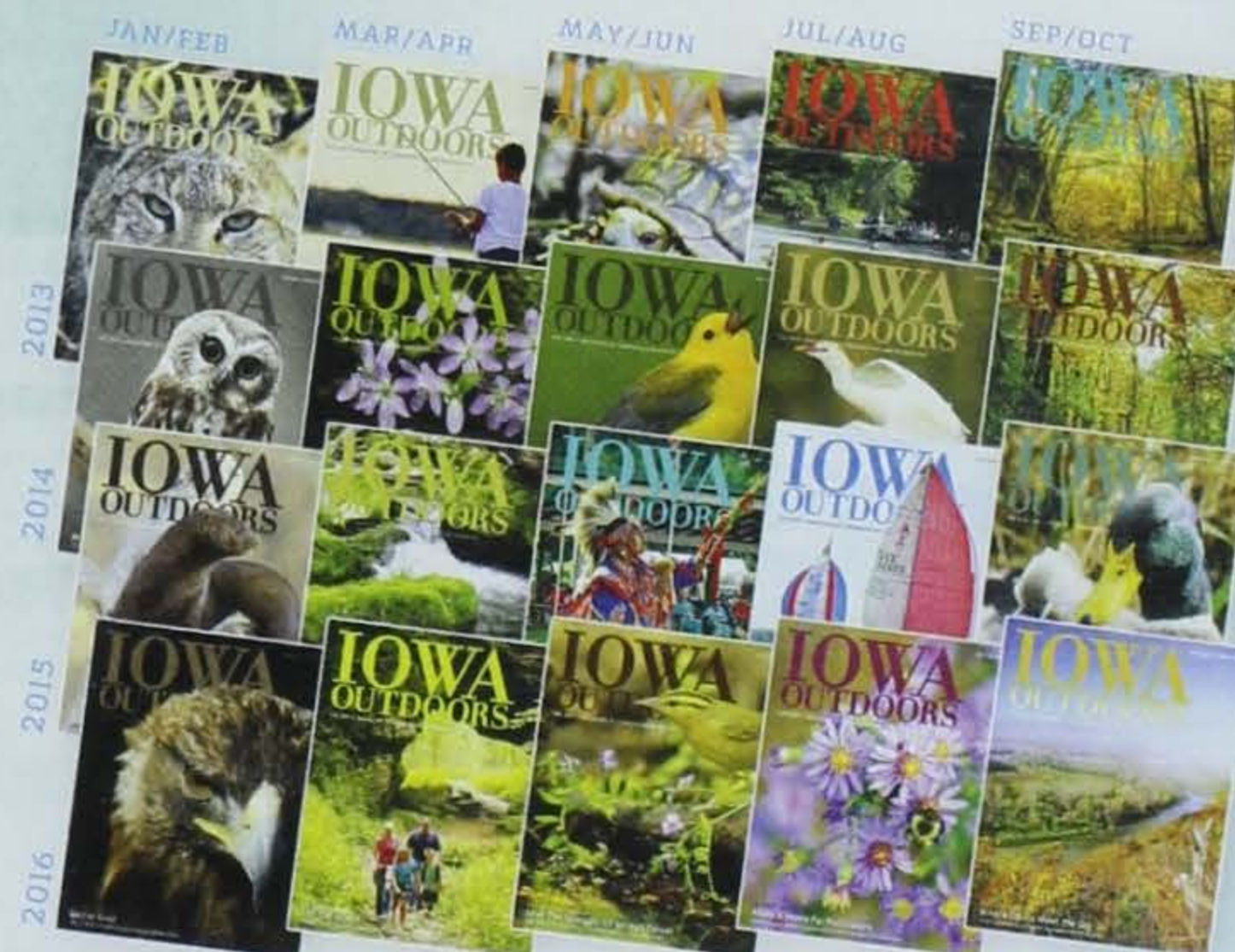


- Hiking • Biking • Paddling & Boating Adventures
- History • Rivertowns • Environmental News
- Local Food & more!

**Subscribe** to Big River on our website [BigRiverMagazine.com](http://BigRiverMagazine.com), or call our toll-free number 1-800-303-8201.

**IOWA  
OUTDOORS**

**BACK ISSUES AVAILABLE  
FOR ONLY \$5.00 EACH**



**TO ORDER YOUR ISSUES TODAY  
CALL 515-725-8200**



IOWA

January

# January 2017

# IOWA OUTDOORS

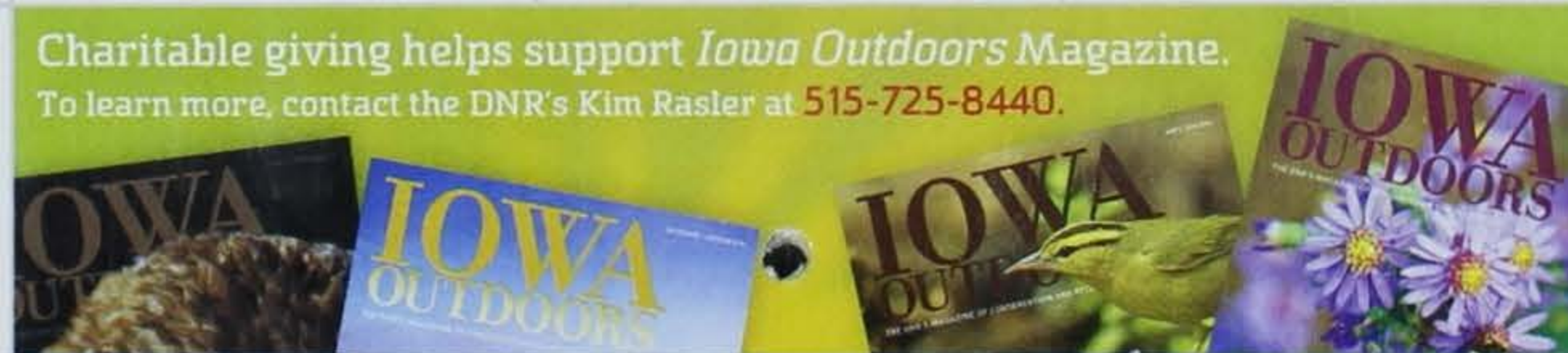
THE DNR'S MAGAZINE OF CONSERVATION AND RECREATION

SUNDAY	MONDAY	TUESDAY	WEDNESDAY	THURSDAY	FRIDAY	SATURDAY
1  New Year's Day Hanukkah ends	2	3  <i>Quadrantids meteor shower peaks Jan. 3-4</i>	4  <i>Perihelion—Earth at closest orbit to Sun Canada, brant and white-fronted goose season closes in north zone</i>	5 	6	7
8  <i>Look for bald eagles feeding below dams and open water areas</i>	9  <i>2016 hunting and fishing licenses expire tomorrow</i>	10  <i>Pheasant, late muzzleloader deer, archery deer and archery turkey seasons close</i>	11  <i>Fox squirrels begin to mate</i>	12 	13  <i>1912 State record low temperature set in Washta, -47°</i>	14  <i>Light goose season closes in north zone</i>
15  <i>Fox and coyote mating season begins (mid- to late January)</i>	16  Martin Luther King Jr. Day	17  <i>Domestic rainbow trout spawning peaks</i>	18  <i>Canada, white-fronted and brant goose season closes in south and Missouri River zones.</i>	19 	20  <i>Mid-winter bald eagle and migratory bird counts begin</i>	21
22	23	24	25  <i>Registration for DNR hunting and conservation camps begins; <a href="http://towa.dnr.gov">towa.dnr.gov</a></i>	26	27 	28  <i>Light goose Conservation Order begins</i>
29	30	31  <i>Quail, partridge, ruffed grouse, squirrel and trapping (excluding beaver) seasons close</i>	  <i>Search woods for shed antlers</i>			



A set of ski tracks vanishes into a snowy cave-like entrance to a wintry wonderland.  
by RON HUELSE

Charitable giving helps support *Iowa Outdoors* Magazine.  
To learn more, contact the DNR's Kim Rasler at 515-725-8440.



DECEMBER 2016

S	M	T	W	T	F	S
				1	2	3
4	5	6	7	8	9	10
11	12	13	14	15	16	17
18	19	20	21	22	23	24
25	26	27	28	29	30	31

FEBRUARY

S	M	T	W	T	F	S
				1	2	3
4	5	6	7	8	9	10
11	12	13	14	15	16	17
18	19	20	21	22	23	24
25	26	27	28			



February  
IOWA

# February 2017

# IOWA OUTDOORS

THE DNR'S MAGAZINE OF CONSERVATION AND RECREATION

SUNDAY	MONDAY	TUESDAY	WEDNESDAY	THURSDAY	FRIDAY	SATURDAY																																										
			1	2	3	4																																										
			<i>Great horned owls are on the nest in early February</i>	<i>1934 work began on the Zebulon Pike Lock and Dam in Dubuque</i>	<i>1996 State record low temperature tied in Elkader, -47°</i>																																											
5	6	7	8	9	10	11																																										
	<i>Bald eagles are staking territories and building nests</i>		<i>Cardinals and chickadees begin singing mating calls</i>			<i>Bobcat mating begins</i>																																										
12	13	14	15	16	17	18																																										
<i>1875 Meteor strikes near Amana, leaving 800 pounds of meteorites</i>		<i>Valentine's Day</i> <i>Walleye season closes at end of day on Iowa Great Lakes</i>		<i>2010 Earthquake felt in eastern Iowa</i>	<i>Great Backyard Bird Count runs today through the 20th. <a href="http://birdssource.org/gbbc">birdssource.org/gbbc</a></i>	<i>1909 Wallace Stegner, prominent author and conservation voice, born at Lake Mills</i>																																										
19	20	21	22	23	24	25																																										
<i>Although ice fishing slows, river fishing is excellent for walleyes in open water below dams</i>	<i>Permanent ice fishing shelters must be removed from state lakes unless deadline is extended</i> <i>Presidents Day</i>																																															
26	27	28																																														
<i>1846 William F. "Buffalo Bill" Cody born near LeClaire</i> <i>Can reserve campsites for Memorial Day weekend; 1-877-IAPARKS or <a href="http://iowastateparks.reserveamerica.com">iowastateparks.reserveamerica.com</a></i>	<i>Turkey vultures return when snow melts and carcasses become visible</i>	<i>Cottontail hunting season ends</i> <i>Mardi Gras</i>																																														
	<i>Late afternoon light illuminates the iridescent colors of an eastern wild turkey in stark contrast to the freshly fallen powder.</i> <i>BY RON HUELSE</i>																																															
					<p>JANUARY</p> <table border="1"> <tr><td>S</td><td>M</td><td>T</td><td>W</td><td>T</td><td>F</td><td>S</td></tr> <tr><td>1</td><td>2</td><td>3</td><td>4</td><td>5</td><td>6</td><td>7</td></tr> <tr><td>8</td><td>9</td><td>10</td><td>11</td><td>12</td><td>13</td><td>14</td></tr> <tr><td>15</td><td>16</td><td>17</td><td>18</td><td>19</td><td>20</td><td>21</td></tr> <tr><td>22</td><td>23</td><td>24</td><td>25</td><td>26</td><td>27</td><td>28</td></tr> <tr><td>29</td><td>30</td><td>31</td><td></td><td></td><td></td><td></td></tr> </table>		S	M	T	W	T	F	S	1	2	3	4	5	6	7	8	9	10	11	12	13	14	15	16	17	18	19	20	21	22	23	24	25	26	27	28	29	30	31				
S	M	T	W	T	F	S																																										
1	2	3	4	5	6	7																																										
8	9	10	11	12	13	14																																										
15	16	17	18	19	20	21																																										
22	23	24	25	26	27	28																																										
29	30	31																																														
					<p>MARCH</p> <table border="1"> <tr><td>S</td><td>M</td><td>T</td><td>W</td><td>T</td><td>F</td><td>S</td></tr> <tr><td></td><td></td><td></td><td>1</td><td>2</td><td>3</td><td>4</td></tr> <tr><td>5</td><td>6</td><td>7</td><td>8</td><td>9</td><td>10</td><td>11</td></tr> <tr><td>12</td><td>13</td><td>14</td><td>15</td><td>16</td><td>17</td><td>18</td></tr> <tr><td>19</td><td>20</td><td>21</td><td>22</td><td>23</td><td>24</td><td>25</td></tr> <tr><td>26</td><td>27</td><td>28</td><td>29</td><td>30</td><td>31</td><td></td></tr> </table>		S	M	T	W	T	F	S				1	2	3	4	5	6	7	8	9	10	11	12	13	14	15	16	17	18	19	20	21	22	23	24	25	26	27	28	29	30	31	
S	M	T	W	T	F	S																																										
			1	2	3	4																																										
5	6	7	8	9	10	11																																										
12	13	14	15	16	17	18																																										
19	20	21	22	23	24	25																																										
26	27	28	29	30	31																																											



March  
IOWA

# March 2017

# IOWA OUTDOORS

THE DNR'S MAGAZINE OF CONSERVATION AND RECREATION

SUNDAY	MONDAY	TUESDAY	WEDNESDAY	THURSDAY	FRIDAY	SATURDAY
			1	2	3	4
	<i>Iowa income taxes due April 30: Support wildlife—check the Fish and Wildlife Fund box on your tax form.</i>		<i>Paddlefish season runs through April 15 on the Mississippi, Missouri and Big Sioux rivers; additional regulations apply.</i>	<i>REAP education grants due May 15, iowareap.com</i>	<i>Chorus frogs begin singing as soon as ice goes out</i>	<i>Search "camps and workshops" at iowadnr.gov for the spring Becoming an Outdoors Woman weekend, or call 515-725-8200</i>
5	6	7	8	9	10	11
<i>Look for returning robins and bluebirds</i>				<i>Woodcock mating display flights begin</i>	<i>Northern pike netting begins after ice-out on Mississippi River and Iowa Great Lakes</i>	<i>Cottontails may be seen courting—jumping airborne and chasing mates under the moonlight</i>
12	13	14	15	16	17	18
<i>Daylight saving time starts</i>	<i>Look for blooming pasque flowers</i>		<i>Dogs prohibited on all state-owned game management areas through July 15</i>	<i>Spring tree planting can begin if frost is gone from ground</i>	<i>St. Patrick's Day Spring peeper frogs may begin calling in eastern and southeast Iowa</i>	<i>In 2012, 34 morel mushrooms found near Keokuk, about a month earlier than expected</i>
19	20	21	22	23	24	25
<i>Owls will be on nestlings</i>	<i>Vernal equinox - first day of spring</i>	<i>1961 Iowa Legislature chooses the oak as Iowa's official tree</i>		<i>Watch for coyote pups in wild areas</i>	<i>Listen for gobbling wild turkeys</i>	<i>Take photos of woodland Dutchman's breeches and dogtooth violets in bloom</i>
26	27	28	29	30	31	
	<i>After ice-out, migratory waterfowl return</i>		<i>Beavers begin making scent mounds of piled mud, grass and sticks coated with scent oils near ponds</i>		<i>1933 President Franklin Roosevelt signs the bill to create the Civilian Conservation Corps</i>	



*As if posing for a holiday card, a male northern cardinal sits in a snowy evergreen. This is one beautiful sight that residents of the mountain and Pacific west don't see—the species is largely an eastern dweller and a year-round Iowa inhabitant.*  
BY RON HUELSE

FEBRUARY

S	M	T	W	T	F	S
			1	2	3	4
5	6	7	8	9	10	11
12	13	14	15	16	17	18
19	20	21	22	23	24	25
26	27	28				

APRIL

S	M	T	W	T	F	S
						1
2	3	4	5	6	7	8
9	10	11	12	13	14	15
16	17	18	19	20	21	22
23	24	25	26	27	28	29
30						



April 2017



IOWA



# April 2017

# IOWA OUTDOORS

THE DNR'S MAGAZINE OF CONSERVATION AND RECREATION

SUNDAY	MONDAY	TUESDAY	WEDNESDAY	THURSDAY	FRIDAY	SATURDAY																																																																																				
	<p>Like many squirrels, the eastern gray is a scatter-hoarder—hiding food in small caches for later. If watched by another squirrel, they may pretend to bury a nut while secretly hiding it in their mouth to deceive competitors. They make several thousand caches each season and use highly accurate spatial memory using distant and nearby landmarks to retrieve them.</p> <p>BY RON HUELSE</p>	<p>Running water available in campgrounds around mid-month, after threat of frost gone</p>	<p>Hunter safety education classes begin; check out <a href="http://www.iowadnr.gov">www.iowadnr.gov</a> for dates and locations</p>	<p>In April, deer and raccoon spotlight surveys typically begin, as does weekly trout stocking. Full waterfowl migration typically underway.</p>		1 April Fools' Day																																																																																				
2 Walleye gill-netting underway	 <p>Gosling hatch begins</p>	3	4 Deer shed winter coats	5	6 1982 Iowa's latest subzero temperature recorded, -9°F at Manchester	7 Jupiter at closest approach to Earth. Use binoculars to see Jupiter's four largest moons, which appear as bright dots next to the planet.																																																																																				
9 Blizzard of 1973 dumps up to 20.3 inches of snow in eastern Iowa. Gusts of 65 mph create snow drifts that suffocate over 100,000 cattle and 200,000 domestic turkeys.	10 Watch water areas for return of shorebirds	 <p>1954 Iowa Conservation Commission launches first-in-the-nation TV show "Outdoor Shop Talk" produced by staff Look for fox pups in wild areas</p>	11 Eagle hatch begins	12 American toad begins singing	13	14 2010 Wisconsin meteor lights up northern Iowa skies																																																																																				
16 Easter Sunday	17 First turkey season runs through the 20th Hike southern Iowa woods for morels	18 Federal taxes due Plant native milkweeds for monarchs	 <p>19 Turkeys on nests incubating eggs</p>	20 Lyrids meteor shower peaks April 22-23	21 1980 Iowa's earliest official 100' day recorded at Fort Dodge and Waterloo Second turkey season runs through the 25th	22 47th Earth Day Around wetlands, look for return of garter snakes from hibernation																																																																																				
23	24 Catfish begin biting on dead fish in warm, shallow waters	25 Pheasants and quail begin nesting	26 Third turkey season runs through May 2	27 Save money and reduce electric use—install LED lighting	28 Arbor Day	29 Reserve campsites and cabins; <a href="http://iowastateparks.reserveamerica.com">iowastateparks.reserveamerica.com</a> or 1-877-IAPARKS																																																																																				
30					<p>MARCH</p> <table border="1"> <tr><td>S</td><td>M</td><td>T</td><td>W</td><td>T</td><td>F</td><td>S</td></tr> <tr><td></td><td></td><td>1</td><td>2</td><td>3</td><td>4</td><td></td></tr> <tr><td>5</td><td>6</td><td>7</td><td>8</td><td>9</td><td>10</td><td>11</td></tr> <tr><td>12</td><td>13</td><td>14</td><td>15</td><td>16</td><td>17</td><td>18</td></tr> <tr><td>19</td><td>20</td><td>21</td><td>22</td><td>23</td><td>24</td><td>25</td></tr> <tr><td>26</td><td>27</td><td>28</td><td>29</td><td>30</td><td>31</td><td></td></tr> </table>	S	M	T	W	T	F	S			1	2	3	4		5	6	7	8	9	10	11	12	13	14	15	16	17	18	19	20	21	22	23	24	25	26	27	28	29	30	31		<p>MAY</p> <table border="1"> <tr><td>S</td><td>M</td><td>T</td><td>W</td><td>T</td><td>F</td><td>S</td></tr> <tr><td></td><td>1</td><td>2</td><td>3</td><td>4</td><td>5</td><td>6</td></tr> <tr><td>7</td><td>8</td><td>9</td><td>10</td><td>11</td><td>12</td><td>13</td></tr> <tr><td>14</td><td>15</td><td>16</td><td>17</td><td>18</td><td>19</td><td>20</td></tr> <tr><td>21</td><td>22</td><td>23</td><td>24</td><td>25</td><td>26</td><td>27</td></tr> <tr><td>28</td><td>29</td><td>30</td><td>31</td><td></td><td></td><td></td></tr> </table>	S	M	T	W	T	F	S		1	2	3	4	5	6	7	8	9	10	11	12	13	14	15	16	17	18	19	20	21	22	23	24	25	26	27	28	29	30	31			
S	M	T	W	T	F	S																																																																																				
		1	2	3	4																																																																																					
5	6	7	8	9	10	11																																																																																				
12	13	14	15	16	17	18																																																																																				
19	20	21	22	23	24	25																																																																																				
26	27	28	29	30	31																																																																																					
S	M	T	W	T	F	S																																																																																				
	1	2	3	4	5	6																																																																																				
7	8	9	10	11	12	13																																																																																				
14	15	16	17	18	19	20																																																																																				
21	22	23	24	25	26	27																																																																																				
28	29	30	31																																																																																							



LOWYA

May

# May 2017

# IOWA OUTDOORS

THE DNR'S MAGAZINE OF CONSERVATION AND RECREATION

SUNDAY	MONDAY	TUESDAY	WEDNESDAY	THURSDAY	FRIDAY	SATURDAY
	1	2	3	4	5	6
Peak camping rates begin May 1; make reservations at 1-877-IAPARKS or iowastateparks.reserveamerica.com	Bike to work month—www.bikeiowa.com	1890 Large meteorite strikes 11 miles northwest of Forest City	1986 Inaugural convention of the National Rivers Hall of Fame, Dubuque Fourth turkey season runs through May 21	Best month to fish for most species. Fish are near shore and spawning. River fishing success depends on water clarity. Fish feeder streams or canals where water is warmer.	Peak neo-tropical bird migration—including hummingbirds, warblers and orioles—through the month	Walleye season opens on Iowa Great Lakes
7	8	9	10	11	12	13
1897 General Assembly chooses wild rose as Iowa's official flower	Yellow-headed blackbirds arrive		Register now for Outdoor Journey for Girls at Hickory Hills near Dysart in July 515-725-8200 or iowadnr.gov		Watch water areas for beaver kits	
14	15	16	17	18	19	20
Mother's Day	REAP Conservation Education grants due DNR begins mourning dove surveys	Bluebirds hatch first of two broods	Mourning doves cooing and mating	Bobolinks return from Argentina		Armed Forces Day
21	22	23	24	25	26	27
Muskie season runs through Nov. 30 on all Minnesota border lakes, including the Iowa Great Lakes	1955 Goldfinch designated Iowa State Bird	Red-tailed hawks nesting Look for return of whip-poor-wills	Look for fireflies in central and southern Iowa	Pheasant hatch begins Fawns born through first week of June	Frank Lloyd Wright-designed Cedar Rock house near Quasqueton opens this weekend for season	Ramadan Begins
28	29	30	31			
1920 Backbone dedicated as Iowa's first state park 1947 Snow falls over northwest two-thirds of state with 10 inches at Le Mars	1955 Rock Creek Lake near Newton and Green Valley Lake near Creston open to fishing; limits of bass taken in 15 minutes. Almost 5,000 anglers at Green Valley. Memorial Day	State Forest Nursery stops taking seedling orders				



A woodland violet blooms in the spring. The flowers of the common edible plant are sometimes used to dress up fancy cakes and salads.

BY ROBERT BUMAN

APRIL

S	M	T	W	T	F	S
						1
2	3	4	5	6	7	8
9	10	11	12	13	14	15
16	17	18	19	20	21	22
23	24	25	26	27	28	29
30						

JUNE

S	M	T	W	T	F	S
						1
				2	3	4
5	6	7	8	9	10	11
12	13	14	15	16	17	18
19	20	21	22	23	24	25
26	27	28	29	30		



LOWA

June 2017

# June 2017

# IOWA OUTDOORS

THE DNR'S MAGAZINE OF CONSERVATION AND RECREATION

SUNDAY	MONDAY	TUESDAY	WEDNESDAY	THURSDAY	FRIDAY	SATURDAY
				1	2	3
		Peak of songbird nesting is June through July	Heron nesting	1833 Iowa Territory opened for settlement Can reserve campsites for Labor Day weekend; 1-877-IAPARKS or iowastateparks.reserveamerica.com	Youth Hunter Education Challenge June 2-4; 515-205-8709 or iowadnr.gov Free Fishing Days through Sunday	1860 Worst tornado in Iowa history kills 141, injures 329 from Hardin to Clinton counties Get started on REAP private cost-share grants for city and county conservation
4	5	6	7	8	9	10
Channel catfish and largemouth bass spawning; fish near riprap with a ball of nightcrawlers for catfish	Listen for singing bullfrogs and tree frogs Quail and turkeys hatching	DNR biologists begin breeding bird surveys	Watch urban skies for return of night hawks		Lewis and Clark Festival June 9-11 at Lewis and Clark State Park in Onawa	
11	12	13	14	15	16	17
Save energy and money—have air conditioners serviced		2008 Cedar River at Cedar Rapids shatters previous record floods of 1929 and 1851	Flag Day 1998 Official one-day precipitation record set with 13.18-inch rain in Atlantic Outdoor Journey for Girls at Springbrook Conservation Education Center, June 14-16; 515-725-8200 or twinnr.com	Saturn closest to Earth. See rings and moons with a medium-sized telescope. Turtles begin laying eggs		1673 Marquette and Joliet paddle into the Mississippi River
18	19	20	21	22	23	24
Father's Day		Summer solstice—first day of summer Canada goose banding begins through early July	Hunting and Conservation Camp for boys at Springbrook Conservation Education Center June 21-23; 641-747-8383 or iowadnr.gov			
25	26	27	28	29	30	
	Ramadan Ends			Make sure to clean boats, trailers and equipment after outings to prevent spread of aquatic nuisance species		Lakes begin to stratify by temperature. In lakes 20 feet deep, a thermocline will form around 10 feet devoid of oxygen below that line. In deeper lakes, the thermocline will be around 15 feet. Fishing below the thermocline is fruitless. TIP: Contour maps and depth finders will help locate the thermocline.



A whitelined sphinx moth, commonly called a hummingbird moth (*Hyles lineata*), can hover mid-air for extended periods to sip nectar.

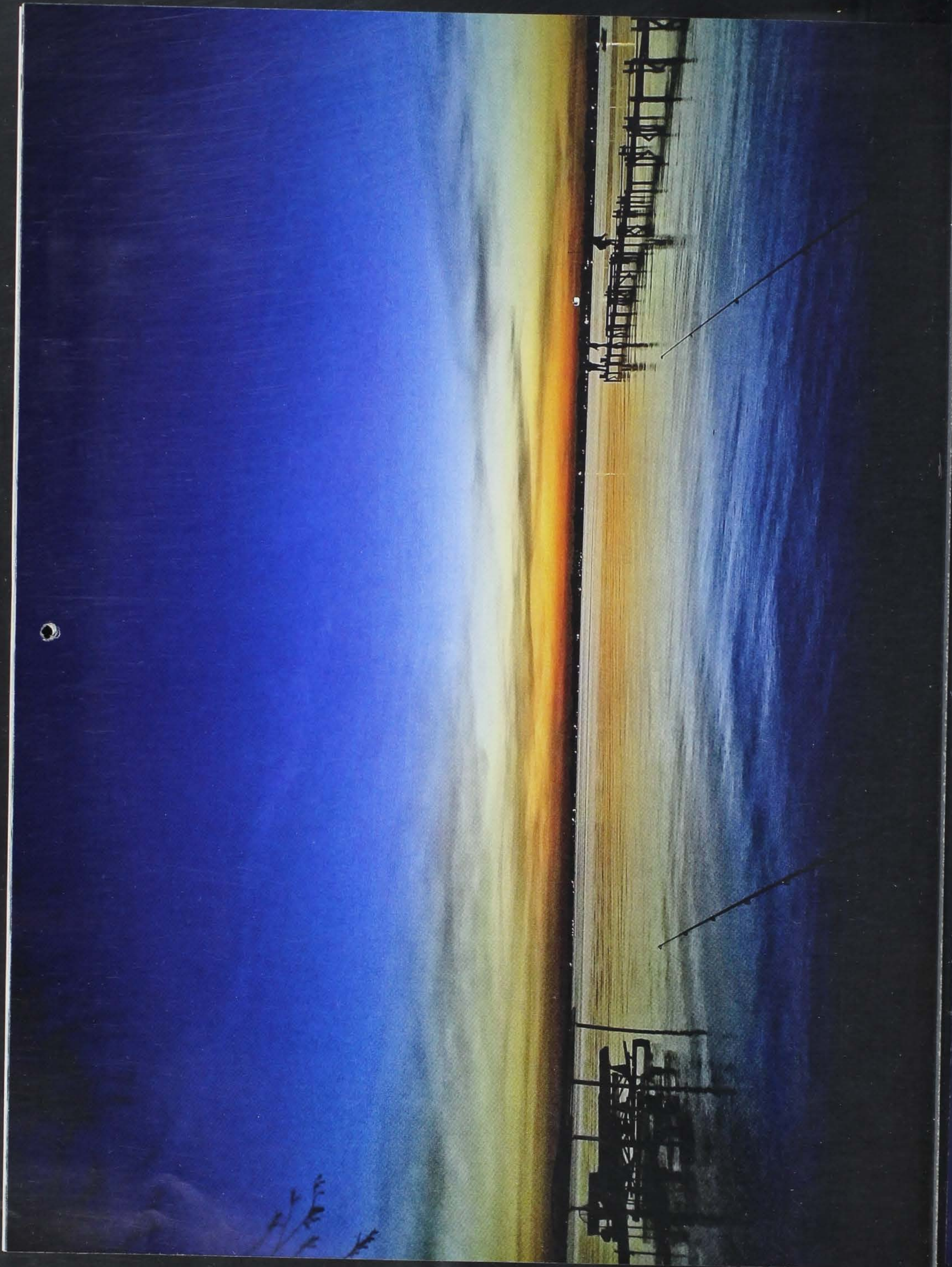
BY RON HUELSE

MAY

S	M	T	W	T	F	S
	1	2	3	4	5	6
7	8	9	10	11	12	13
14	15	16	17	18	19	20
21	22	23	24	25	26	27
28	29	30	31			

JULY

S	M	T	W	T	F	S
						1
2	3	4	5	6	7	8
9	10	11	12	13	14	15
16	17	18	19	20	21	22
23	24	25	26	27	28	29
30	31					



JULY 2017

IOWA

# July 2017

# IOWA OUTDOORS

THE IOWA MAGAZINE OF CONSERVATION AND RECREATION

SUNDAY	MONDAY	TUESDAY	WEDNESDAY	THURSDAY	FRIDAY	SATURDAY
 <p>The photographer captured this Clear Lake sunset image while fishing with his daughters and nephew. BY VOUTH VARANGKOUNH</p>		<p>July is peak nesting time for goldfinch, the state bird</p>	<p>Cut cooling bills—close curtains on sunny sides of house</p>		<p>Turkey brood survey begins through August</p>	1
2	3	4	5	6	7	8
	<p>Aphelion—Earth at farthest distance from Sun</p>	<p>Independence Day</p>	<p>Save fuel by checking vehicle tire pressure</p>			
9	10	11	12	13	14	15
<p>Take kids hiking to look for fawns</p>	<p>Project AWARE river clean-up July 10-14; location TBA; iowaprojectaware.com</p>	<p>Outdoor Journey for Girls at Hickory Hills near Dysart, July 11-13; 515-725-8200 or iowdnr.com</p>		<p>Check out what's going on at Mines of Spain State Recreation Area, 563-556-0620</p>	<p>Christmas in July at Ledges State Park in Boone County through Sunday</p>	<p>Dogs allowed back on state-owned game management areas tomorrow</p>
16	17	18	19	20	21	22
	<p>Eighty percent of game fish can be found in 20 percent of a stream; move often to find fish</p>			<p>Take kids streamwalking</p>		
23	24	25	26	27	28	29
	<p>2010 Lake Delhi Dam fails on Maquoketa River after 10- to 13-inch rainfall within 24 hours</p>	<p>1936 State record high temperature set in Atlantic and Logan at 117°F. Low stream flows; catfishing easiest in streams using cheese baits</p>	<p>Hunting and Conservation Camp for Boys, Springbrook Conservation Education Center, July 22-28; 641-747-8383 or iowadnr.gov</p>	<p>Search prairies for blazing stars in bloom</p>		
30	31					

JUNE

S	M	T	W	T	F	S
				1	2	3
4	5	6	7	8	9	10
11	12	13	14	15	16	17
18	19	20	21	22	23	24
25	26	27	28	29	30	

AUGUST

S	M	T	W	T	F	S
		1	2	3	4	5
6	7	8	9	10	11	12
13	14	15	16	17	18	19
20	21	22	23	24	25	26
27	28	29	30	31		





# August 2017

# IOWA OUTDOORS

SUNDAY	MONDAY	TUESDAY	WEDNESDAY	THURSDAY	FRIDAY	SATURDAY
		1	2	3	4	5
		State Forest Nursery begins accepting seedling orders for spring planting August roadside survey begins Dove and duck banding begins	Outdoor Journey for Girls at Springbrook Conservation Education Center Aug. 2-4, 515-725-8200 or iowadnr.gov Shorebirds begin migrating south	REAP city, county and private grants due Aug. 15, www.iowareap.com	Search "camps and workshops" at iowadnr.gov for the fall Becoming an Outdoors Woman weekend, or call 515-725-8200	Watch for muskrats building huts and storing food
6	7	8	9	10	11	12
Watch skies for swallows in large flocks	Hummingbirds prepare for migration by using feeders for the next 3-4 weeks	1915 Last log raft used by the lumber industry seen in Dubuque	Buy a magazine subscription at the DNR Building during the state fair Aug. 10-20 and receive a free t-shirt	Waterfowl seasons presented to Iowa Natural Resource Commission Iowa State Fair begins	1867 Hordes of grasshoppers reported in western Iowa Perseid meteor shower peaks Aug. 12-13	Deer start to shed antler velvet; fawns start to lose spots
13	14	15	16	17	18	19
		Deer tags on sale			1963 Dutch Elm disease blamed for the deaths of thousands of trees in Iowa	
20	21	22	23	24	25	26
1804 The only death on the Lewis and Clark Expedition occurs in Iowa 1950 Earliest freeze record set across northern Iowa with 30°F in Britt and Sibley Iowa State Fair ends	Total solar eclipse (moon completely blocks the sun) across much of the nation today, first since 1979.		Blue-winged teal and doves congregating for migration		1916 National Park Service established by U.S. Congress	
27	28	29	30	31		
			Pelican migration begins. Watch for flocks on reservoirs and large lakes		Locust songs peak during August	



Insects emerging from the Turkey River at Vernon Springs County Park south of Cresco in northeast Iowa attracted huge swarms of cedar waxwings. "During their feeding frenzy, they paid very little attention to me as I wandered slowly among them," said photographer Jeff Tisl. BY JEFF TISL

Buy a subscription at the DNR Building at the Iowa State Fair and get a **FREE T-SHIRT!**



JULY

S	M	T	W	T	F	S
						1
2	3	4	5	6	7	8
9	10	11	12	13	14	15
16	17	18	19	20	21	22
23	24	25	26	27	28	29
30	31					

SEPTEMBER

S	M	T	W	T	F	S
						1
2	3	4	5	6	7	8
9	10	11	12	13	14	15
16	17	18	19	20	21	22
23	24	25	26	27	28	29
30						



September 2017

IOWA

# September 2017

# IOWA OUTDOORS

THE DNR'S MAGAZINE OF CONSERVATION AND RECREATION

SUNDAY	MONDAY	TUESDAY	WEDNESDAY	THURSDAY	FRIDAY	SATURDAY
					1	2
		Squirrels start cutting acorns from trees	REAP education grants due Nov. 1, <a href="http://www.iowareap.com">www.iowareap.com</a>		Dove season opens Take a family outing to view monarchs as they congregate for migration to Mexico	Rabbit and squirrel seasons open
3	4	5	6	7	8	9
A magnitude 5.6 earthquake last year in Oklahoma is felt across much of Iowa.	1890 The Morrison Electric auto introduced to Iowans in a parade in Des Moines Labor Day	Take a child to the woods to watch squirrels, bluejays and chipmunks caching acorns	Wood duck migration begins Neotropical birds start to head south through end of month	1953 Old Oscar, the 5-foot, 100-plus pound giant lake sturgeon always on display at the Iowa State Fair, dies Fall colors begin in northern Iowa	Plant conifers Sept. 10-30	
10	11	12	13	14	15	16
	Patriot Day					1881 Earliest measurable snowfall set with 6-inch snowfall in western Iowa Youth/disabled hunter season for deer begins
17	18	19	20	21	22	23
1950 Ding Darling, famed cartoonist and conservationist, helps open Lake Darling State Park near Washington	1926 Unofficial one-day precipitation record set with 21.70-inch rain in Boyden Fall colors begin in southern Iowa			Clad your kids in buckskin and head to the Fort Atkinson Rendezvous held this weekend in Winneshiek County	Autumnal equinox - first day of autumn	
24	25	26	27	28	29	30
First killing frost averages this date in extreme northern Iowa			1909 Earthquake felt in eastern Iowa	1953 Iowa's latest official 100°F temperature day with 103°F at Glenwood		Peak season camping fees end



Two big-bodied bucks don't seem to mind one another's company, but in a couple of months during the rut, they may be butting heads.  
BY GREG PUNELLI

AUGUST

S	M	T	W	T	F	S
		1	2	3	4	5
6	7	8	9	10	11	12
13	14	15	16	17	18	19
20	21	22	23	24	25	26
27	28	29	30	31		

OCTOBER

S	M	T	W	T	F	S
1	2	3	4	5	6	7
8	9	10	11	12	13	14
15	16	17	18	19	20	21
22	23	24	25	26	27	28
29	30	31				



October 2017 IOWA

# October 2017

# IOWA OUTDOORS

THE DNR'S MAGAZINE OF CONSERVATION AND RECREATION

SUNDAY	MONDAY	TUESDAY	WEDNESDAY	THURSDAY	FRIDAY	SATURDAY
1 <i>Fall deer and turkey archery season begins Youth/disabled deer season ends</i>	2	3 <i>1838 Chief Black Hawk dies at his home in Davis County Campgrounds start shutting off water for the season</i>	4	5	6	7 <i>Ruffed grouse season opens Bowhunter observation survey begins</i>
8 <i>Quail form into coveys</i>	9 <i>Columbus Day</i>	10 <i>Fall colors peak Oct. 10-20</i>	11	12	13	14 <i>Early muzzleloader deer season begins Lacey Keosauqua Scenic Drive Festival this weekend, 319-293-3502</i>
15 <i>Plant broadleaf trees mid-October until the ground freezes</i>	16 <i>Fall turkey gun/bow season begins</i>	17 <i>Compost instead of burning leaves</i>	18	19	20	21 <i>Youth pheasant season Oct. 21-22</i>
22 <i>Early muzzleloader deer season closes</i>	23	24 <i>Squirrels begin building leaf nests</i>	25 <i>1949 Effigy Mounds National Monument designated by President Truman</i>	26	27	28 <i>1925 Earliest subzero temperature with -5°F at Little Sioux Pheasant and quail seasons begin</i>
29	30	31 <i>1991 Halloween blizzard and ice storm lasts until Nov. 1, leaving 16 inches of snow in northwest Iowa with 60 mph gusts. Catastrophic ice storm from Clarinda to Forest City followed by bitter cold. Halloween</i>				



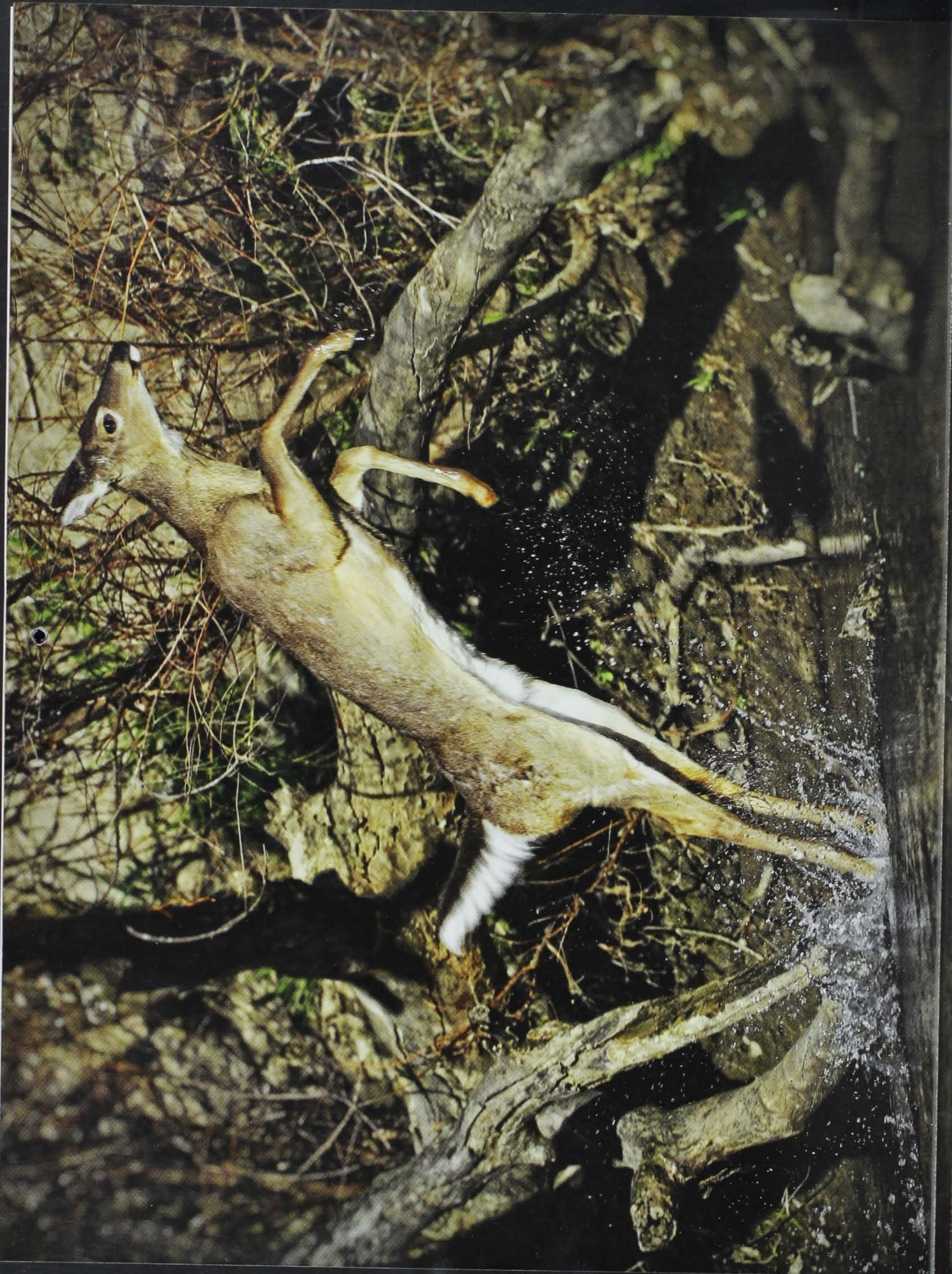
At Dolliver Memorial State Park in Webster County, hike past the Copperas Beds—unique sandstone formations that rise 100 feet above Prairie Creek, then past oak-covered hillsides.  
BY ROBERT BUMAN

SEPTEMBER

S	M	T	W	T	F	S
					1	2
3	4	5	6	7	8	9
10	11	12	13	14	15	16
17	18	19	20	21	22	23
24	25	26	27	28	29	30

NOVEMBER

S	M	T	W	T	F	S
			1	2	3	4
5	6	7	8	9	10	11
12	13	14	15	16	17	18
19	20	21	22	23	24	25
26	27	28	29	30		



November

LOWA

# November 2017

# IOWA OUTDOORS

THE DNR'S MAGAZINE OF CONSERVATION AND RECREATION

SUNDAY	MONDAY	TUESDAY	WEDNESDAY	THURSDAY	FRIDAY	SATURDAY
			1	2	3	4
			<i>Peak flights of duck migration</i>	<i>Turn in poachers to TIP Hotline: 1-800-532-2020 or iowadnr.gov/tip</i>		<i>Furbearer hunting and trapping seasons begin</i>
5	6	7	8	9	10	11
<i>Daylight saving time ends</i>		<i>Election Day</i>		<i>Peak of the deer rut begins</i>	<i>Save energy by replacing furnace filter</i>	<i>1940 blizzard kills duck hunters along Mississippi River, killing 160 across the Midwest</i> <i>Veterans Day</i>
12	13	14	15	16	17	18
	<i>Venus and Jupiter extremely close together in eastern sky before sunrise</i>	<i>Leonid meteor shower peaks Nov. 17-18</i>			<i>Mentored Outdoor Experience deer hunt, Springbrook Conservation Education Center, Nov. 17-19</i>	
19	20	21	22	23	24	25
				<i>Thanksgiving Day</i>	<i>Give Iowa Outdoors as a holiday gift; order at iowadnr.gov</i>	<i>Take a family outing to watch eagles along rivers</i>
26	27	28	29	30		



*A spooked whitetail displays near vertical leaping ability...and yes, it cleared the hurdle.*  
by RON HUELSE

OCTOBER

S	M	T	W	T	F	S
1	2	3	4	5	6	7
8	9	10	11	12	13	14
15	16	17	18	19	20	21
22	23	24	25	26	27	28
29	30	31				

DECEMBER

S	M	T	W	T	F	S
						1
2	3	4	5	6	7	8
9	10	11	12	13	14	15
16	17	18	19	20	21	22
23	24	25	26	27	28	29
30	31					



December 2017

IOWA



# December 2017

# IOWA OUTDOORS

THE DNR'S MAGAZINE OF CONSERVATION AND RECREATION

SUNDAY	MONDAY	TUESDAY	WEDNESDAY	THURSDAY	FRIDAY	SATURDAY
 <p>A coyote prances off into the cold, frost-laden day while searching for its next meal. BY RON HUELSE</p>			<p>Give Iowa Outdoors as a holiday gift—order at <a href="http://iowaoutdoorsmagazine.com">iowaoutdoorsmagazine.com</a>.</p>		<p>1</p> <p>Muskie season closed on all Minnesota border lakes, including the Iowa Great Lakes Fall turkey gun/bow season closes Archery only turkey and deer seasons close</p>	<p>2</p> <p>First shotgun deer season opens</p>
<p>3</p>	<p>4</p>	<p>5</p>	<p>6</p> <p>First shotgun deer season closes</p>	<p>7</p> <p>Pearl Harbor Remembrance Day</p>	<p>8</p>	<p>9</p> <p>Second shotgun deer season begins</p>
<p>10</p>	<p>11</p>	<p>12</p> <p>Geminid meteor shower peaks Dec. 13-14 with up to 120 meteors per hour</p>	<p>13</p> <p>Hanukkah begins</p>	<p>14</p> <p>Christmas Bird Count through Jan. 5; <a href="http://audubon.org">audubon.org</a></p>	<p>15</p> <p>2018 hunting and fishing licenses go on sale</p>	<p>16</p>
<p>17</p> <p>Second shotgun deer season closes</p>	<p>18</p> <p>Late split deer and fall turkey bow season reopens Late muzzleloader deer season begins</p>	<p>19</p>	<p>20</p> <p>Hanukkah ends</p>	<p>21</p> <p>Winter solstice—first day of winter</p>	<p>22</p>	<p>23</p>
<p>24</p> <p>Nonresident antlerless deer holiday season, Dec. 24–Jan. 2</p>	<p>25</p> <p>Christmas</p>	<p>26</p> <p>Ring in the New Year at Honey Creek Resort. For event details call 877-677-3344.</p>	<p>27</p>	<p>28</p>	<p>29</p>	<p>30</p>
<p>31</p> <p>New Year's Eve</p>						

Give a gift magazine subscription! [IOWADNR.GOV](http://IOWADNR.GOV)



**6 GREAT ISSUES FOR ONLY \$15**

NOVEMBER

S	M	T	W	T	F	S
		1	2	3	4	
5	6	7	8	9	10	11
12	13	14	15	16	17	18
19	20	21	22	23	24	25
26	27	28	29	30		

JANUARY 2018

S	M	T	W	T	F	S
	1	2	3	4	5	6
7	8	9	10	11	12	13
14	15	16	17	18	19	20
21	22	23	24	25	26	27
28	29	30	31			

# IOWA STATE FOREST NURSERY

Our purpose at the state forest nursery is to provide quality, affordable native trees to landowners for timber production, wildlife habitat, erosion control and aesthetics.

Native trees are one of the keys to having a healthy woodland. To improve quality we are continuing to identify additional locations for seed collection from native forests and wildlife areas.

START YOUR NATIVE FOREST TODAY!  
ORDERS PLACED BY PHONE OR ONLINE  
1-800-865-2477  
WWW.IOWATREEPLANTING.COM

Try ordering ONLINE with real time inventory updates! It's easy! Simply create an account with your contact and order information and it will be saved for future orders.

Orders can be placed **August 1 - May 31**.

Please do not send payment at this time.  
*Some restrictions apply and are listed on our website.*

For free tree planting advice, planting plans, and assistance with cost share contact your district forester today for more information.



Name: \_\_\_\_\_  
Address: \_\_\_\_\_  
City: \_\_\_\_\_  
State: \_\_\_\_\_ Zip: \_\_\_\_\_  
Email: \_\_\_\_\_  
Daytime Phone: \_\_\_\_\_  
Pick up  Ship  | Fall  Spring   
Week you would like seedlings: \_\_\_\_\_  
Order Last Year: Yes  No   
County where Planted: \_\_\_\_\_  
Alternative Shipping Address Yes  No

HARDWOODS	SIZES	PRICE PER 100 TREES	QUANTITY /SIZE
Black Cherry	8-16"	\$65	
	17-24"	\$90	
Black Walnut	8-16"	\$65	
	17-24"	\$90	
Cottonwood	14" Cutting	\$65	
	12" Rooted Cutting	\$90	
Hackberry	8-16"	\$65	
	17+"	\$90	
Hickory Shagbark	6-12"	\$65	
	17+"	\$90	
Hickory Shellbark	6-12"	\$65	
Hybrid Poplar	14" Cutting	\$65	
	12" Rooted Cutting	\$65	
Hybrid Willow	14" Cutting	\$65	
	12" Rooted Cutting	\$65	
Kentucky Coffeetree	8-16"	\$65	
	17-24"	\$90	
Maple, Hard	8-16"	\$65	
Maple, Silver	8-16"	\$65	
	17-24"	\$90	
Northern Pecan	8-16"	\$65	
	17-24"	\$90	
Oak, Black	8-16"	\$65	
	17-24"	\$90	
Oak, Bur	8-16"	\$65	
	17-24"	\$90	
Oak, Pin	8-16"	\$65	
	17-24"	\$90	
Oak, Red	8-16"	\$65	
	17-24"	\$90	
Oak, Swamp White	8-16"	\$65	
	17-24"	\$90	
Oak, White	8-16"	\$65	
	17-24"	\$90	
River Birch	8-16"	\$65	
	17-24"	\$90	
Sycamore	8-16"	\$65	
	17-24"	\$90	

EVERGREENS	SIZES	PRICE PER 100 TREES	QUANTITY /SIZE
Bald Cypress	8-16"	\$50	
	17-24"	\$80	
Norway Spruce	8-16"	\$50	
White Spruce	8-16"	\$50	
Eastern White Pine	8-16"	\$50	
	17-24"	\$80	
Jack Pine	8-16"	\$50	
Red Pine	8-16"	\$50	
Scotch Pine	8-16"	\$50	
	17-24"	\$80	
Concolor Fir	8-16"	\$50	

**Shortages:** We do our best to estimate a saleable inventory but due to the nature of a natural product we may run short. We reserve the right to offer you a refund or substitution.

**WATCH OUR WEBSITE** for monthly specials on unique packets offered for the month!

SMALL TREES AND SHRUBS	SIZES	PRICE PER 100 TREES	QUANTITY /SIZE
Arrowwood	8-16"	\$65	
	17-24"	\$90	
Aroniaberri	8-16"	\$65	
	17-24"	\$90	
Buttonbush	8-16"	\$65	
	17-24"	\$90	
Chokecherry	8-16"	\$65	
	17-24"	\$90	
Dogwood, Gray	8-16"	\$65	
	17-24"	\$90	
Dogwood, Redosier	8-16"	\$65	
	17-24"	\$90	
Elderberry	8-16"	\$65	
	17-24"	\$90	
Hazelnut	8-16"	\$65	
	17-24"	\$90	
Lilac, Common	8-16"	\$65	
	17-24"	\$90	
Nannyberry	8-16"	\$65	
	17-24"	\$90	
Ninebark	8-16"	\$65	
	17-24"	\$90	
Redbud, American	8-16"	\$65	
	17-24"	\$90	
Serviceberry	8-16"	\$65	
	17-24"	\$90	
Wild Plum	8-16"	\$65	
	17-24"	\$90	

PACKET TYPE	PRICE	QUANTITY
Turkey Packet	\$190	
Pheasant Packet	\$190	
Quail Packet	\$190	
Pollinator Packet	\$190	
Songbird Packet	\$45	
Create-a-Packet	\$190	1.
		2.
		3.
		4.

### Shipping Cost:

8-16" - \$5 per 100	17-24" - \$10 per 100
Out of state orders may require additional shipping charges.	

Fall shipments start the last week in October and spring start the first week in April. We reserve the right to limit the amount of trees shipped per week. Orders must be paid in full before shipping.

**Payment:** An invoice will be sent by Mail. Payment for fall orders is due by **October 15** and payment for spring orders is due by **March 1**. We accept **MasterCard, Visa and Discover over the phone and checks by mail.**


Claims for any cause must be made to the nursery manager and may require a local forester to inspect the tree planting. We give no warranty, expressed or implied, as to the success rate of the seedlings. Claims are handled on a case by case basis.

### IOWA STATE FOREST NURSERY

2404 South Duff Ave. | Ames, IA 50010-8037

P: 800.865.2477 | F: 515.233.1131

[iowadnr.gov/nursery](http://iowadnr.gov/nursery)



# Sommerfeld OUTFITTERS

A PASSION FOR THE OUTDOORS

THE HOME OF

The  
Snare Shop

YOUR COMPLETE  
**OUTFITTER**

TRAPPING, FISHING, HUNTING,  
FIREARMS, APPAREL, CAMPING,  
PREPPING AND MORE



330 S. Main Street • Lidderdale, Iowa  
712-822-5780 • [www.snareshop.com](http://www.snareshop.com)

# 2017 CALENDAR



DECEMBER 2016



JANUARY



FEBRUARY



MARCH



APRIL



MAY



JUNE



JULY



SEPTEMBER



OCTOBER



August 2017

IOWA OUTDOORS MAGAZINE

SUNDAY	MONDAY	TUESDAY	WEDNESDAY	THURSDAY	FRIDAY	SATURDAY
		1	2	3	4	5
6	7	8	9	10	11	12
13	14	15	16	17	18	19
20	21	22	23	24	25	26
27	28	29	30	31		

www.iowaoutdoorsmagazine.com

www. [iowaoutdoorsmagazine](http://iowaoutdoorsmagazine.com) .COM



NOVEMBER



DECEMBER