



THE ASYLUM FOR THE INSANE AT CHEROKEE.

## SECOND REPORT

OF THE

# BOARD OF COMMISSIONERS

FOR THE ERECTION OF

## The Hospital for the Insane AT CHEROKEE.

---

PUBLISHED BY ORDER OF THE GENERAL ASSEMBLY.

---

DES MOINES: ✓  
F. R. CORAWAY, STATE PRINTER.  
1867.

# MEMBERS OF THE BOARD OF COMMISSIONERS.

---

JED LAKE, <i>President</i> .....	Independence
WILLIAM G. KENT, <i>Secretary</i> .....	Fort Madison
*Edwin H. CONGER, <i>Treasurer</i> .....	Des Moines
†LEONARD L. KELLOGG, <i>Treasurer</i> .....	Sioux City
H. A. GILMAN, <i>Superintendent of Hospital</i> .....	Mt. Pleasant
GERSHOM H. HILL, <i>Superintendent of Hospital</i> .....	Independence
FRANK C. HOYT, <i>Superintendent of Hospital</i> .....	Clarinda

---

\* Resigned June 4, 1897.

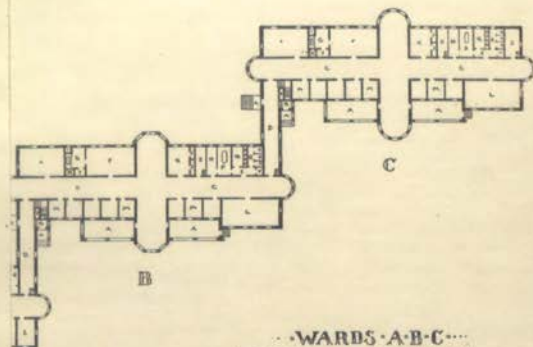
† Succeeded Major Conger June 30, 1897.

# REAR-CENTER BLDG

- A PORCHES
- B ENTRY
- C CORRIDOR
- D CONNECTING CORRIDOR
- E DINING ROOM
- F SCULLERY
- G SITTING ROOM
- H MATRON'S OFFICE
- I CHAMBER
- J CLOSETS
- K TOILETS
- L STORAGE ROOM
- M ICE CHAMBER
- N UPPER PART OF MORGUE
- O RECEPTION ROOM
- P RECEIVING PLACE

# BOILER HOUSE

- A PORCH
- B ENTRY
- C MACHINE SHOP
- D TANK ROOM
- E ENGINE ROOM
- F BOILER ROOM
- G COAL
- H SMOKE STACK
- I TOILET



# WARDS A-B-C

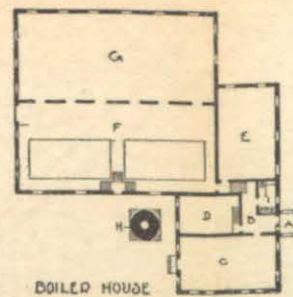
- A-PORCHES
- B-BATH ROOM
- B-ENTRY
- Q-LAVATORY
- C-CORRIDORS
- R-WATER CLOSET
- D-CONNECTING COR'DS
- S-BOILED CLOTHES CHUTE
- E-PASSAGES
- T-DUST CHUTE
- F-DINING ROOM
- U-VENT SHAFT
- G-SCULLERY
- V-MOP CLOSET
- H-DUMPS WAITER
- W-ELEVATOR
- I-DRYING CLOSET
- X-SUPERVISOR'S R'M
- J-CLOSETS
- Y-MARKING ROOM
- K-ATTENDANT'S R'M
- Z-PATIENTS RECP RM
- L-DORMITORIES
- S-TOILET ROOM
- M-SINGLE ROOMS
- N-CLOTHES ROOM
- O-LINEN ROOM

TAYLOR CO

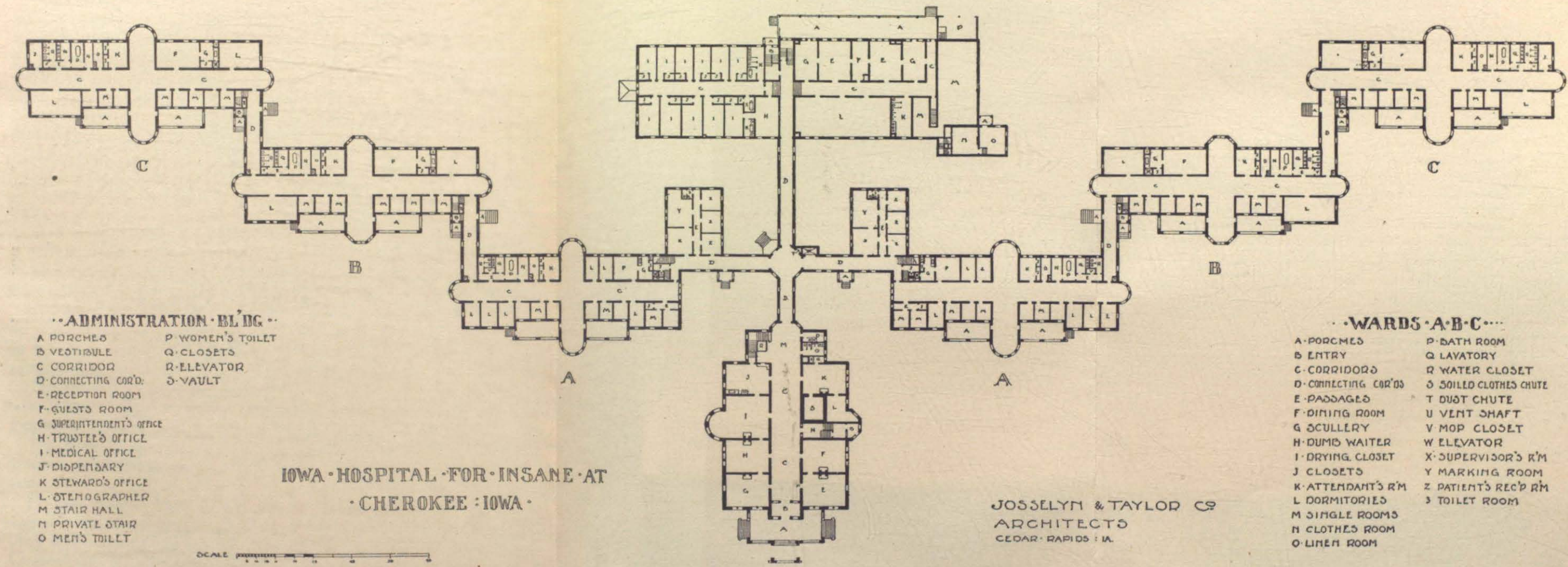
CTO

MA





- REAR-CENTER BLDG
- A PORCHES
  - B ENTRY
  - C CORRIDOR
  - D CONNECTING CORRIDOR
  - E DINING ROOM
  - F SCULLERY
  - G SITTING ROOM
  - H MATRON'S OFFICE
  - I CHAMBER
  - J CLOSETS
  - K TOILETS
  - L STORAGE ROOM
  - M ICE CHAMBER
  - N UPPER PART OF MORGUE
  - O RECEPTION ROOM
  - P RECEIVING PLACE
- BOILER HOUSE
- A PORCH
  - B ENTRY
  - C MACHINE SHOP
  - D TANK ROOM
  - E ENGINE ROOM
  - F BOILER ROOM
  - G COAL
  - H SMOKE STACK
  - I TOILET



- ADMINISTRATION BLDG
- A PORCHES
  - B VESTIBULE
  - C CORRIDOR
  - D CONNECTING COR'D
  - E RECEPTION ROOM
  - F GUESTS ROOM
  - G SUPERINTENDENT'S OFFICE
  - H TRUSTEE'S OFFICE
  - I MEDICAL OFFICE
  - J DISPENSARY
  - K STEWARD'S OFFICE
  - L STENOGRAPHER
  - M STAIR HALL
  - N PRIVATE STAIR
  - O MEN'S TOILET
  - P WOMEN'S TOILET
  - Q CLOSETS
  - R ELEVATOR
  - S VAULT

IOWA HOSPITAL FOR INSANE AT  
CHEROKEE IOWA

SCALE 1" = 20'

JOSELYN & TAYLOR CO  
ARCHITECTS  
CEDAR RAPIDS IA

- WARDS A-B-C
- A PORCHES
  - B ENTRY
  - C CORRIDORS
  - D CONNECTING COR'DS
  - E PASSAGES
  - F DINING ROOM
  - G SCULLERY
  - H DUMB WAITER
  - I DRYING CLOSET
  - J CLOSETS
  - K ATTENDANT'S R'M
  - L DORMITORIES
  - M SINGLE ROOMS
  - N CLOTHES ROOM
  - O LINEN ROOM
  - P BATH ROOM
  - Q LAVATORY
  - R WATER CLOSET
  - S SOILED CLOTHES CHUTE
  - T DUST CHUTE
  - U VENT SHAFT
  - V MOP CLOSET
  - W ELEVATOR
  - X SUPERVISOR'S R'M
  - Y MARKING ROOM
  - Z PATIENTS REC'D R'M
  - 3 TOILET ROOM

ADMINISTRATION BLDG



## REPORT.

*To His Excellency, F. M. Drake, Governor of Iowa:*

SIR—We, the commissioners of the Iowa Hospital for the Insane at Cherokee, beg leave to submit the following report:

In pursuance to authority granted by the Twenty-fifth General Assembly, your commissioners on the 18th of December, 1895, prepared proposals for grading, excavating and furnishing materials and constructing the foundations and basements for the administration building, the rear center building and the three sections, A, B and C, of the south wing and sections A, B and C of the north wing, and corridors connecting the same, for said Cherokee hospital.

Said proposals were duly advertised for the period of thirty days, as prescribed by law, in four daily papers published in the state and for the same period in two papers published out of the state.

Bids were received, opened and read February 18, 1896, in presence of the full board.

The contract was let to J. F. Atkinson & Bro., of Marshalltown, for the sum of seventy-six thousand dollars (\$76,000).

On the 18th of December, 1896, the work was turned over to the commission with additional cost of \$960.56 to contract price, as certified to by the architect as being correct in regard to certain changes in the construction.

The work was received and settled for, less five hundred dollars (\$500) retained by the commission until April, 1897, as guarantee against damage from frost.

We desire to say that the foundation of Sioux Falls jasper is a model of excellence and not surpassed by any building in the state.

Proposals for erecting and inclosing the superstructure were duly advertised for in accordance with law, and on December 1, 1896, bids were opened and read. Owing to the fact that two hundred and fifty thousand dollars (\$250,000) of the appropriation was not available until the years 1898 and 1899 your commission was fortunate in being able to let the contract, payments to be made as the money became due to Butler-Ryan

company of St. Paul. By so doing we have saved money for the state and gained two years' time in the completion of the work.

The amount of said contract on the superstructure is three hundred and five thousand one hundred and seventy-three dollars (\$305,173), to be completed by December 1, 1898; but we are now assured that the work will be turned over to the commission by May 1, 1898. This amount includes the supervisors' buildings in a supplemental contract made after the commission were satisfied the appropriation would be sufficient after paying other incidental expenses.

The resignation of Maj. E. H. Conger, as a member of the commission, was sent to your excellency in June, and Hon. L. L. Kellogg, of Sioux City, was duly commissioned to fill said vacancy and was chosen treasurer of the board.

We feel that it has been economy for the state to push forward the work in the manner above recited, and the next legislature should make sufficient appropriation to complete and furnish the hospital ready for occupancy by 1900.

Without casting any reflection, we wish to call attention to the fact that the other hospitals were built section at a time, as it were, consuming thirty-eight years for Mt. Pleasant, twenty-eight years for Independence and fourteen years for Clarinda.

With these institutions crowded beyond their capacity and 1,600 insane in the poorhouses of the state, can this commonwealth now afford to be parsimonious in providing for the care of these unfortunates?

We hope the next legislature will go forward. The charitable institutions of the state rank with the best in the land. The responsibility of each legislator is greater than in years past. The population is increasing and the institutions of the state need more watchful care.

On business principles, aside from any humane sentiment, an enterprise of this kind should be completed as rapidly as possible, and for this purpose we ask the following appropriations to complete the two wings and central buildings of this hospital as now under roof, and for heat, light and power plant, with necessary outbuildings and requisite equipment and furnishings to put the buildings in condition for occupancy.

Plastering and mason work.....	\$ 54,000
Carpenter work and painting.....	44,000
Stair and vault doors.....	8,000
Plumbing and sewerage.....	24,000

Heating and ventilating apparatus.....	\$ 29,000
Elevators and dumb waiters.....	5,000
Water tanks, cisterns, piping, etc.....	9,000
Boiler, coal, and power house, smoke stack and tunnels.....	26,000
Laundry building, cow and horse barns, vegetable cellar, and slaughter house.....	30,000
Power, electric light and refrigerating plant, and laundry machinery.....	50,000
Total.....	\$279,000

The above amounts are from estimates furnished by our architects, Josselyn & Taylor, of Cedar Rapids. We purchased the 240 acres of land upon which the state had an option, as provided by the appropriation made by the Twenty-sixth General Assembly, making 600 acres for the hospital farm.

The commission will have full possession of the farm March 1, 1898, and we desire to state that a committee has been appointed to rent the land for a period of two years, excepting so much as will be used for building purposes, also reserving five acres for nursery grounds, to be used in starting evergreens, plants, shrubbery, etc., for the use of the institution.

We invite your inspection of the work now in progress, in person, or by committees duly appointed for that purpose, and also call attention to the general plan of the institution for the purpose for which it is designed.

When completed it will surpass our other hospitals in the matter of light, ventilation, and perfect security from fire.

We desire to commend the honest, careful, and vigilant manner in which our architects and superintendent of construction, R. A. Lewis, have discharged their duties in looking after the interest of the state in the construction of this building. In such construction the statute has been complied with as fully as practicable. The contract provides for a fireproof building. All material used was of the best quality. Iron joists were used with hollow tile for fireproofing. The walls are built of good hard brick, with stone trimmings. The administration building is roofed with Ludvici tile, and the sections of the wings with best Bangor slate.

Signed:

JED LAKE,  
L. L. KELLOGG,  
WILLIAM G. KENT,  
H. A. GILMAN, M. D.,  
GERSHOM H. HILL, M. D.,  
FRANK C. HOYT, M. D.

Board of Commissioners.