



Epi Update for Friday, June 4, 2021

Office of the Public Health Medical Director
Center for Acute Disease Epidemiology (CADE)
Bureau of HIV, STD, and Hepatitis

Iowa Department of Public Health (IDPH)

Items for this week's Epi Update include:

- Iowa identifies first variant influenza case of 2020-21 season
- CDC HIV surveillance reports released, Iowa continues to perform well
- In the news: China reports first human case of H10N3 bird flu
- In the news: Vampire bats socially distance when they feel sick
- Infographic: Flu can spread between pigs and people

Iowa identifies first variant influenza case of 2020-21 season

IDPH recently investigated an influenza A(H1N1) variant, or A(H1N1)v, identified in an Iowa resident with illness onset in a previous month. The investigation revealed the person has regular swine contact. No other human cases were identified.

This is the first novel influenza A virus identified in Iowa during the 2020-21 influenza season. Four other human infections with a novel influenza A virus have been reported in the US this season, including in nearby states Wisconsin and Ohio. All cases involved swine contact or close proximity to swine.

There are a number of steps people can take to reduce the spread of influenza between pigs and people, including not drinking or eating in animal care areas, avoiding contact with ill pigs, washing hands before and after contact with pigs, and avoiding contact with other humans or animals if you are sick.

For more information, visit www.cdc.gov/flu/swineflu/variant-flu-in-humans.htm.

CDC HIV surveillance reports released, Iowa continues to perform well

A number of national HIV surveillance reports were released by CDC last week. These include the [2019 HIV Surveillance Report](#) and two supplemental reports: [Estimated HIV Incidence and Prevalence in the United States, 2015-2019](#), and [Monitoring HIV Prevention and Care Objectives Using Surveillance Data, 2019](#). Associated slide sets can be found [here](#).

Iowa continues to perform exceptionally well on many measures of HIV prevention and care. Iowa was again among the top five states for linkage to HIV medical care within a month of diagnosis (91.0%, avg. = 81.3%); receipt of medical care among people aged ≥ 13 years living with HIV infection (88.0%, avg. = 76.0%); and viral suppression among people aged ≥ 13

years living with HIV infection (81.7%, avg. = 65.5%). Iowa's viral suppression rate was second only to Montana. We also continue to perform well at identifying people at risk and getting them on HIV pre-exposure prophylaxis (PrEP), with 30.9% of Iowans deemed to be at risk on PrEP (avg. = 23.4%).

We struggled a bit more with the following measures: viral suppression within 6 months of HIV diagnosis (73.0%, avg. = 68.3%), late HIV diagnoses among people aged ≥ 13 years living with HIV infection (21.0%, avg. = 20.4%), and age-adjusted rates of death among people aged ≥ 13 years living with HIV infection (16.1 per 1,000, avg. = 12.0 per 1,000 people with diagnosed HIV infection).

The best news is that our efforts have resulted in reducing diagnoses and estimated incidence by nearly 30% from 2015 to 2019! In fact, Iowa's HIV incidence has fallen to a level that CDC can no longer estimate with the methods they currently use. These statistics reinforce the concepts that treatment is prevention and that people with undetectable viral loads cannot transmit HIV sexually (known as Undetectable = Untransmittable).

Iowa's 2020 End-of-Year Surveillance Report should be released shortly. While COVID-19 impacted some measures of care, the effect was not overly strong. We hope to report those findings to you soon.

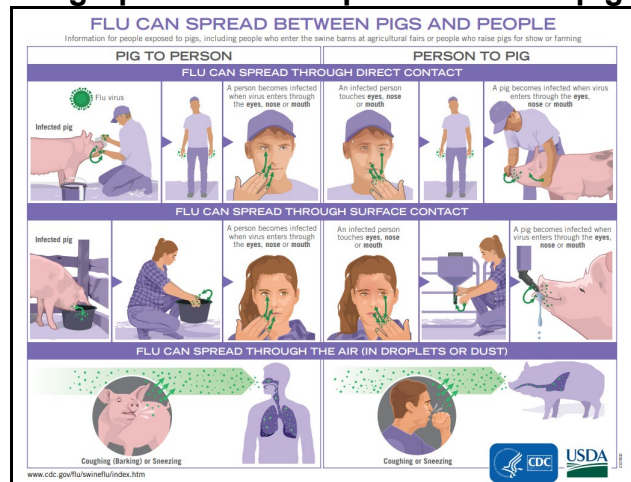
In the news: China reports first human case of H10N3 bird flu

www.reuters.com/business/healthcare-pharmaceuticals/china-reports-human-case-h10n3-bird-flu-2021-06-01/

In the news: Vampire bats socially distance when they feel sick

www.popsci.com/story/science/bats-social-distancing/

Infographic: Flu can spread between pigs and people



To view in full size, visit www.cdc.gov/flu/pdf/swineflu/transmission-between-pigs-people.pdf.

Have a healthy and happy week!

Center for Acute Disease Epidemiology
800-362-2736

Bureau of HIV, STD, and Hepatitis
515-281-6801