

NOVEMBER/DECEMBER 2006

CONSERVATIONIST

IOWA

IOWA'S PREMIER OUTDOOR MAGAZINE



LOOK FOR

IOWA
OUTDOORS
IN JANUARY 2007

2007 IOWA CALENDAR



January



Winter robin and snowy solitude | by Ty Smedes

Close to 100 bird species call Iowa home through the winter months. However, early- and late-season snows sometimes catch regular migrants, like the American robin, off guard.

Sunday	Monday	Tuesday	Wednesday	Thursday	Friday	Saturday
	1 New Year's Day	2	3	4	5	6
7	8	9	10	11	12	13
14	15 Martin Luther King Jr. Day	16	17	18	19	20
21	22	23	24	25	26	27
28	29	30	31	<div> <div>December</div> <div> 1 2 3 4 5 6 7 8 9 10 11 12 13 14 15 16 17 18 19 20 21 22 23 24 25 26 27 28 29 30 31 </div> </div> <div> <div>February</div> <div> 1 2 3 4 5 6 7 8 9 10 11 12 13 14 15 16 17 18 19 20 21 22 23 24 25 26 27 28 </div> </div>		





February

Since the peregrine's formal reintroduction to Iowa in 1989, nesting pairs continue to increase around the state. Last spring, ten pairs were reported with four producing young. However, the real success story for the peregrine is the fact it has returned to its native nesting areas on the river bluffs of northeast Iowa.



Sunday	Monday	Tuesday	Wednesday	Thursday	Friday	Saturday
				1	2	3
4	5	6	7	8	9	10
11	12	13	14 Valentine's Day	15	16	17
18	19 Presidents' Day	20	21 Ash Wednesday	22	23	24
25	26	27	28	<div>January</div> <div> 1 2 3 4 5 6 7 8 9 10 11 12 13 14 15 16 17 18 19 20 21 22 23 24 25 26 27 28 29 30 31 </div> <div>March</div> <div> 1 2 3 4 5 6 7 8 9 10 11 12 13 14 15 16 17 18 19 20 21 22 23 24 25 26 27 28 29 30 31 </div>		





March



Sandhill cranes | by Ty Smedes

Sandhill cranes, with their seven-foot wingspans and distinctive red head patches, migrate through Iowa. While flocks of thousands attract tourists to Nebraska and Wisconsin each March, small groups can be regularly seen in eastern Iowa. In 1992, the first successful Iowa sandhill nest since 1894 was recorded.

Sunday	Monday	Tuesday	Wednesday	Thursday	Friday	Saturday
February 1 2 3 4 5 6 7 8 9 10 11 12 13 14 15 16 17 18 19 20 21 22 23 24 25 26 27 28		April 1 2 3 4 5 6 7 8 9 10 11 12 13 14 15 16 17 18 19 20 21 22 23 24 25 26 27 28 29 30		1	2	3 ○
4	5	6	7	8	9	10
11	● 12	13	14	15	16	17
18	● 19	20	21	22	23	24
25	● 26	27	28 Spring Begins	29	30	31





April



Redbuds at Red Haw | by Clay Smith

Like the beautiful redbuds that ring the lake at Red Haw State Park in Lucas County, each state park has unique features. Take time to explore Iowa's state parks. Campsites, cabins and day-use lodges can be reserved online at www.reserveiaparks.com or by calling 1-877-IAPARKS (427-2757).

Sunday	Monday	Tuesday	Wednesday	Thursday	Friday	Saturday
1 Daylight Savings Time Begins Palm Sunday	2	3 Passover	4	5	6 Good Friday	7
8 Easter	9	10	11	12	13	14
15	16	17	18	19	20	21
22 Earth Day	23	24	25	26	27 Arbor Day	28
29	30			<div>March</div> <div> <div>1 2 3</div> <div>4 5 6 7 8 9 10</div> <div>11 12 13 14 15 16 17</div> <div>18 19 20 21 22 23 24</div> <div>25 26 27 28 29 30 31</div> </div> <div>May</div> <div> <div>1 2 3 4 5</div> <div>6 7 8 9 10 11 12</div> <div>13 14 15 16 17 18 19</div> <div>20 21 22 23 24 25 26</div> <div>27 28 29 30 31</div> </div>		





May



Trout fishing | by **Clay Smith**

May and fly rods go hand-in-hand. Mayfly and caddis fly hatches around this time make matching the hatch easy and trout fishing a lot of fun. More than 300,000 trout are stocked each year in Iowa, and habitat and water quality improvements are allowing native brook trout to reproduce naturally.

Brown trout | by **Lowell Washburn**



Sunday	Monday	Tuesday	Wednesday	Thursday	Friday	Saturday
April 1 2 3 4 5 6 7 8 9 10 11 12 13 14 15 16 17 18 19 20 21 22 23 24 25 26 27 28 29 30		1	2	3	4	5
6	7	8	9	10	11	12
Free Camping Weekend					Free Camping Weekend	Free Camping Weekend
13	14	15	16	17	18	19
Mother's Day						Armed Forces Day
20	21	22	23	24	25	26
27	28	29	30	31	June 1 2 3 4 5 6 7 8 9 10 11 12 13 14 15 16 17 18 19 20 21 22 23 24 25 26 27 28 29 30	
	Memorial Day Observed					



The great spangled fritillary is just one of almost 100 butterfly species found in Iowa. Some butterflies, like the great spangled fritillary, show strong preferences to certain plants or landscapes. The abundance and diversity of these butterflies may provide valuable information regarding impacts on our environment.

June



Sunday	Monday	Tuesday	Wednesday	Thursday	Friday	Saturday
<div>May</div> <div>1 2 3 4 5</div> <div>6 7 8 9 10 11 12</div> <div>13 14 15 16 17 18 19</div> <div>20 21 22 23 24 25 26</div> <div>27 28 29 30 31</div>		<div>July</div> <div>1 2 3 4 5 6 7</div> <div>8 9 10 11 12 13 14</div> <div>15 16 17 18 19 20 21</div> <div>22 23 24 25 26 27 28</div> <div>29 30 31</div>			1	2
					Free Fishing Days	Free Fishing Days
3	4	5	6	7	8	9
Free Fishing Days						
10	11	12	13	14	15	16
				Flag Day		
17	18	19	20	21	22	23
Father's Day				Summer Begins		
24	25	26	27	28	29	30





IOWA OUTDOORS

THE DNR'S MAGAZINE OF CONSERVATION AND RECREATION



*Take a new look
at Iowa's outdoors!*

UNVEILING JANUARY 2007

COMING SOON, your *Iowa Conservationist* magazine will become...

IOWA OUTDOORS

WE CAN'T WAIT TO SHOW YOU:

- **Lost in Iowa:** The best nature destinations and hidden gems to explore.
- **Outdoor Skills:** Secret tips to improve techniques from Iowa experts.
- **Myth Busters:** Crack the truth on common nature-related tall tales.
- **Flora and Fauna:** Interesting facts about Iowa critters and plants.
- **Old Favorites:** Warden's Diary, beautiful photography and informative stories on conservation and Iowa's environment.

PLUS MUCH MORE!

WILD CUISINE ~ KITCHENSIDE
Martin's
Wardens Diary

Whitetail Sorties
How Airborne Biologists Watch
BY JOE WILKINSON PHOTOS BY CLAY SMITH

MY BACKYARD
2
SECOND CUT
removes branch
branch bark ridge
branch collar
PULLING SH
Unit 1000
1/1/10

FLORA & FAUNA
NORTHERN SHRIKE
The Latin name for the northern shrike is *Lanius excubitor*, meaning butcher witchman, a fitting term for their hunting and feeding techniques. That, along with the shrike's habit of impaling prey for future meals earned it the nickname "Butcher Bird".
THE HUNTER
Solitary hunters, they perch high and scan for food. When prey is sighted, they swoop down and knock their prey to the ground. Shrikes have also been known to impale their prey on thorns or similar sharp objects and return to finish their meal days, weeks and even months later.
EYESIGHT AND HOOKED BILL
The shrike's eyesight is comparable to that of diurnal raptors, however they lack the powerful talons to kill their prey. Instead, they kill their prey with a series of bites to the neck from their hooked bills and tooth-like appendages on their upper beak. When insects are on the menu, shrikes will remove the wings, spines and stingers before digesting.
SHRIKE DIET
Although large shrikes make up as much as 25 percent of the shrike's diet in season, small birds and rodents make up the bulk. Shrikes are the only songbirds that consistently prey on vertebrate animals. About the size of a robin, northern shrikes have been known to take prey as large as blue jays and downy woodpeckers.
FOOD STORAGE
Shrikes don't always strike only when they are hungry. When prey is abundant, shrikes will impale their catch on a thorn, barb wire strand or similar sharp object and return to finish their meal days, weeks and even months later.

LOST IN IOWA ~ ROAD TRIP
CAPITAL CITY HIGH
TRACK HUNDREDS OF VORACIOUS RAPTORS AS THEY HUNT AND ALONG THE DES MOINES RIVER—WITHOUT EVER LEAVING YOUR

WINTER WONDERLAND
LOST IN IOWA

READY. SET. EXPLORE.
DON'T MISS AN ISSUE! Subscribe today at www.iowadnr.com or call 800-361-8072



Gift Catalog



Proceeds go to Iowa's State Parks

IOWA OUTDOORS

T-shirt, 100% pre-shrunk
heavyweight cotton.

Available in Maroon and
Pine Green

\$15.00



IOWA OUTDOORS

Long-sleeve shirt, 100%
pre-shrunk heavyweight
cotton.

Available in Maroon
\$17.00 for adults and
youth



IOWA OUTDOORS

Hooded sweatshirt with
muff pocket, 80:20
cotton/polyester for
adults and 50:50 for
youth.

Available in Dark Green
\$29.95 for adults
\$19.95 for youth



To Order

go online 24 hours at

www.iowanaturestore.com

or call toll-free 8 a.m. - 6 p.m. Monday-Friday

866.410.0230



EXPLORE IOWA RIVERS

T-shirt, 100% pre-shrunk heavyweight cotton. Available in Cardinal Red and Military Green \$15.00



EXPLORE IOWA RIVERS

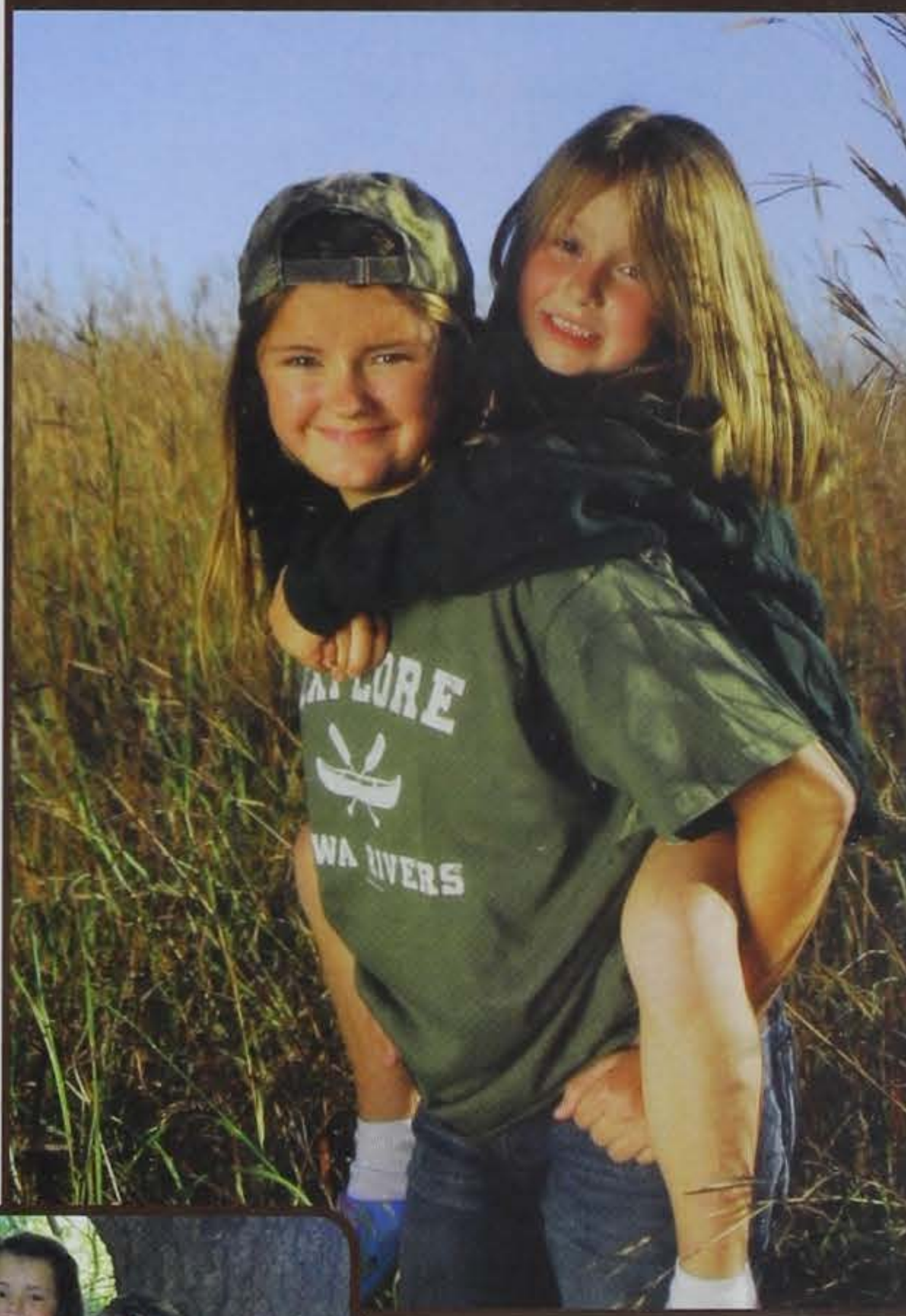
Long-sleeve shirt, 100% pre-shrunk heavyweight cotton. Available in Cardinal Red for adults and Navy Blue for youth \$17.00



EXPLORE IOWA RIVERS

Hooded sweatshirt with muff pocket, 80:20 cotton/polyester for adults and 50:50 for youth. Available in Maroon \$29.95 for adults \$19.95 for youth

Explore Iowa Rivers Apparel



CATFISH CLUB CAP

This structured mid-profile, 6-panel cap is made of soft-brushed cotton. The fabric backstrap has a brass buckle and a stitched-slit tuck to give a clean polished look. Available in Olive and Tan \$18.00



HUNT IOWA CAP BLAZE ORANGE (certified)

This unstructured, low-profile, 6-panel cap is made of polyester. The visor is pre-curved and has a green undervisor. This cap has an adjustable tuck strap with side closure, one size fits most. \$15.00

Now Featuring



Apparel for DNR volunteers, now available for everyone.



HUNT IOWA CAP ADVANTAGE™ TIMBER

This unstructured, low-profile, 6-panel cap is made of garment washed brushed cotton/polyester twill. The visor is pre-curved. This cap has an adjustable tuck strap with side closure, one size fits most. \$15.00

BUCK MASTER

T-shirt, 100% heavyweight cotton.

Available in Gray and Navy

Cotton/polyester blend

Available in a Woodland

Camouflage Pattern

\$15.00



BUCK MASTER

Hooded sweatshirt, 50:50 cotton/polyester; muff pocket; softer feel without pilling.

Available in Sports Gray

\$29.95



HUNT IOWA

BLAZE ORANGE (certified)

Zippered hooded thermal-lined sweatshirt. Certified blaze orange cotton/polyester outershell, thermal lining, 2 front pockets and metal zipper.

\$29.95



DUCK CLUB

Hooded sweatshirt, 50:50 cotton/polyester, heavyweight with muff pocket. Available in Navy

\$29.95



PROPERTY OF IOWA OUTDOORS CLUB

Bag, 100% cotton, heavy enzyme-washed canvas. Cotton webbing straps, main compartment zippered front pocket.

Available in Light Tan and Gold.

\$18.00



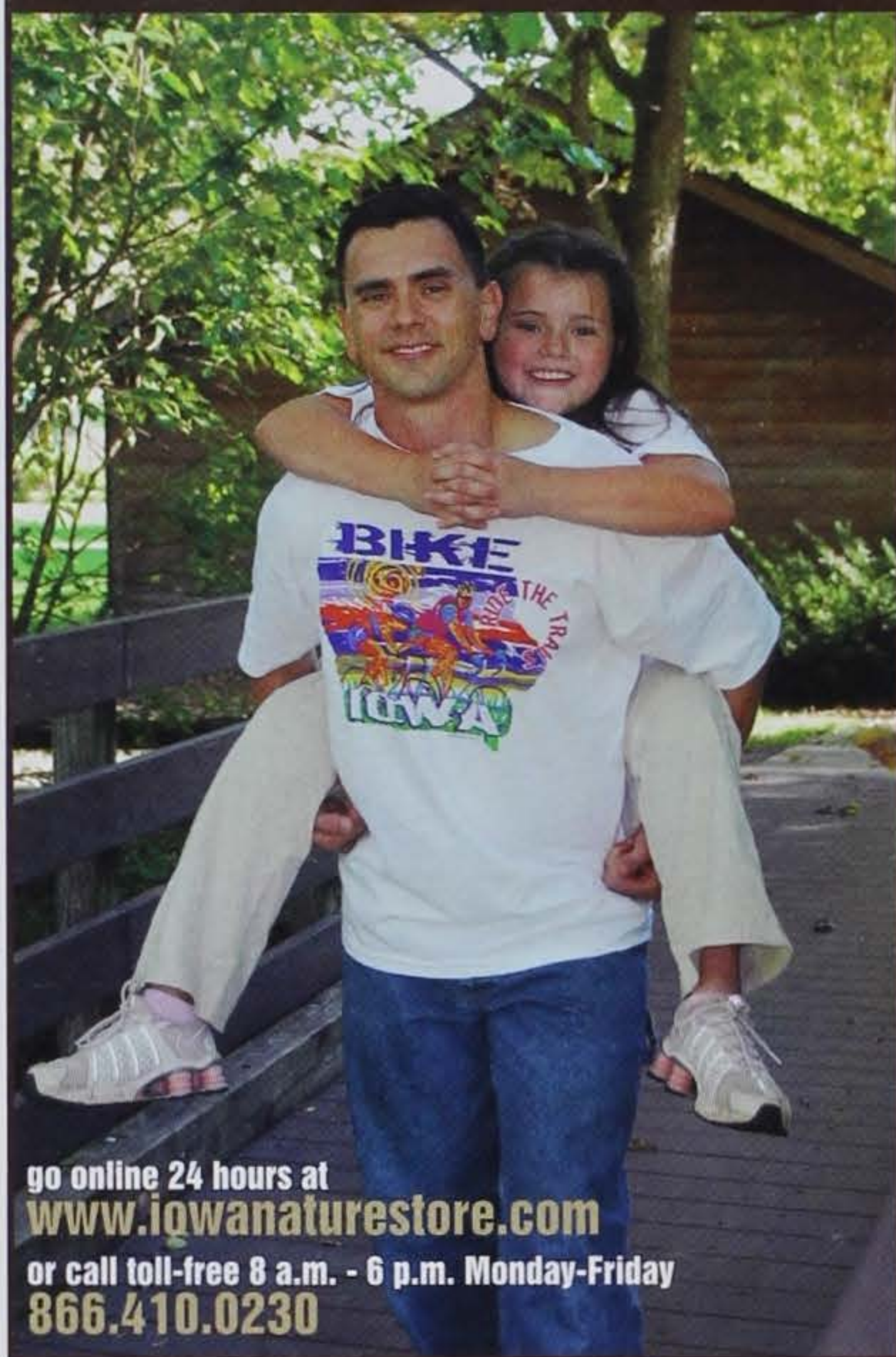
Iowa Outdoor Apparel For The Whole Family



go online 24 hours at
www.iowanaturestore.com

or call toll-free 8 a.m. - 6 p.m. Monday-Friday
866.410.0230

Ready. Set. Explore Iowa.



go online 24 hours at
www.iqwanaturestore.com
 or call toll-free 8 a.m. - 6 p.m. Monday-Friday
866.410.0230

IOWA FISH. HUNT. LIVE

Athletic-cut T-shirt,
 100% Champion™
 heavyweight cotton.
 Available in White
\$15.00



FISH IOWA

T-shirt, 100% cotton.
 Available in White
\$ 9.95 for adult and youth



Shipping costs will vary depending on amount ordered.
 Shipping cost examples
 1 T-shirt - US Postal Service is about \$4.05
 2 T-shirts - US Postal Service is about \$5.30
 1 T-shirt - UPS is about \$6.23
 2 T-shirts - UPS is about \$7.00



BIKE IOWA

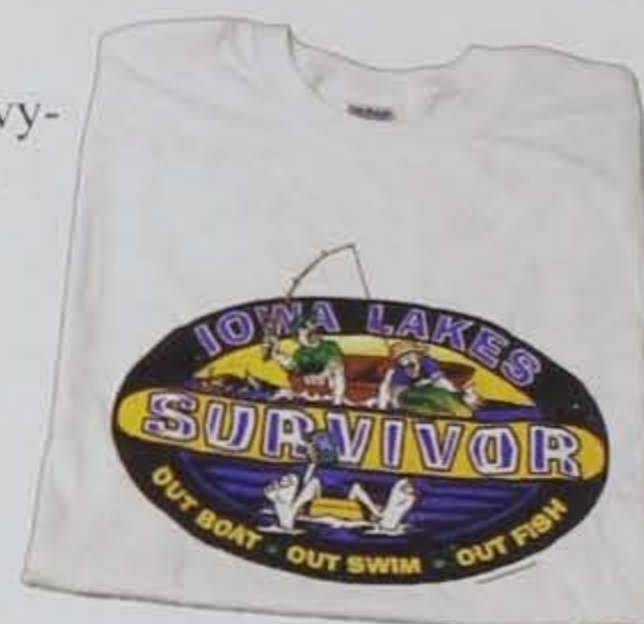
T-shirt, 100% pre-shrunk heavy-weight cotton. Bike routes on back.

Available in White
\$18.00

IOWA SURVIVOR

T-shirt, 100% pre-shrunk heavyweight cotton.

Available in White
\$15.00 for adult and youth



REAP

T-shirt, 100% pre-shrunk heavyweight cotton. Logo for the original Iowa natural resource license plate, new designs coming soon.

Available in Moss Green
\$15.00



Iowa Sportsman's Atlas

All county maps with all public lands; hardsurface, gravel and dirt roads; railroads, rivers, creeks and lakes. Iowa's most accurate outdoor guide. Includes outdoor official contacts in each county. 13 1/2 x 11 1/2, spiral bound; just updated.
 Price is \$21.95

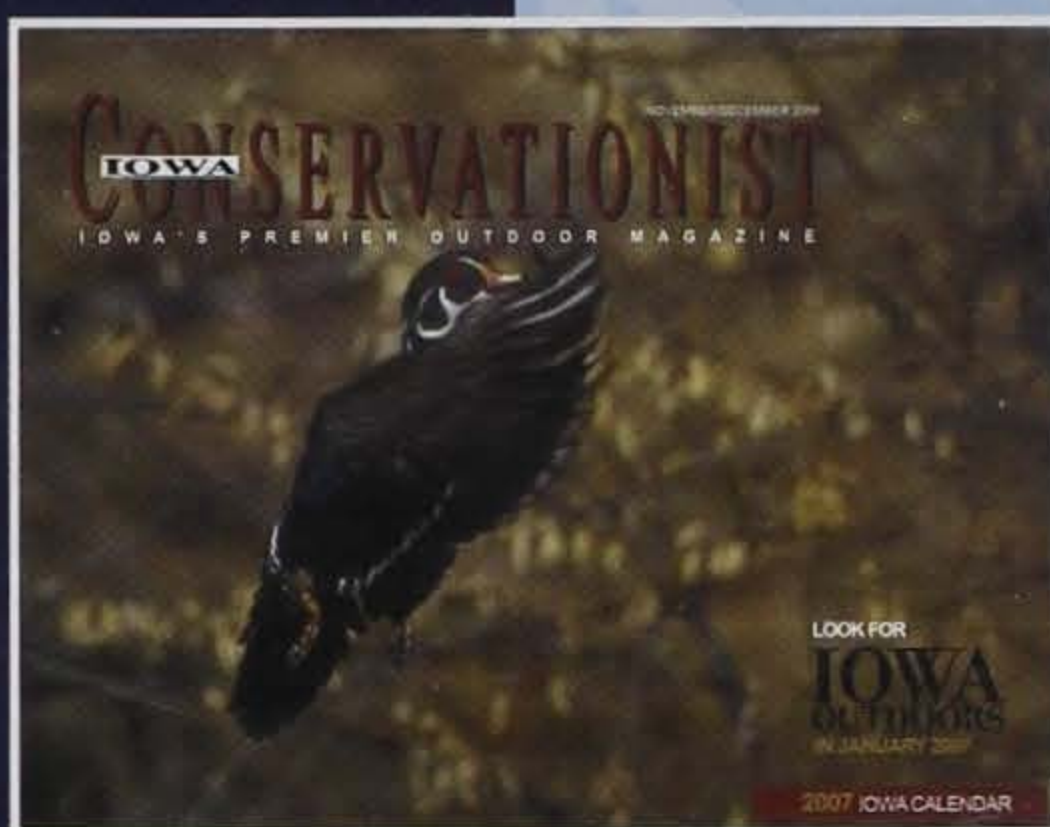


LURE OF IOWA

T-shirt, 100% cotton. Pocketed featuring the "Lure of Iowa"
 Available in Royal Blue
\$12.95

PURCHASE ADDITIONAL 2007 CALENDARS FOR ONLY \$3

WHILE SUPPLIES LAST



TO
ORDER



Call:

(515) 281-5918
8 a.m. - 4:30 p.m. M-F or

Send payment to:

Conservationist Calendar
Wallace State Office Building
502 E. Ninth Ave.
Des Moines, IA 50319-0034

NEED A CHANGE OF SCENERY?



AFFORDABLE TREES! Its worth looking into!

STATE FOREST NURSERY

800-865-2477

www.iowadnr.com/forestry/





Congratulations to Our 2006 Volunteers

Each year our most outstanding volunteers are recognized and honored for their contributions. We are pleased to announce this year's winners and nominees. To learn more about volunteer opportunities with the DNR and to read more about the specific accomplishments of this year's recognized volunteers go to: www.keepersoftheland.org

OUTSTANDING YOUTH VOLUNTEER

Award Winner

McCombs Middle School, 6th Grade Class (Teacher, Becky Victor-Baker), Des Moines School Campus Tree Landscape Project

Nominees

Ben Blatz, Dubuque Mines of Spain State Park Stone Park Entrance Project
Nick Glynn, Dubuque Mines of Spain Recreation Area Savannah Habitat Project
Nick Sisler, Dubuque Mines of Spain Recreation Area Visitors Observation Site Project

OUTSTANDING INDIVIDUAL VOLUNTEER

Award Winner

Robert Simonton, Davenport Greenway Habitat Project

Nominees

Mike Alkire, Onawa Lewis and Clark State Park Construction Projects
Larry Bennett, Knoxville Elk State Park Campground Hosting
Don and Janet Duncan, Muscatine Wildcat Den State Park Friends of Melpine School Initiative
Dennis Ethington, Boone Wildlife Diversity Program Electronic Image Library Project
Dennis Gabler, Adel Green Valley State Park Campground Hosting
Jill Kirchner, Atlantic Elk Rock State Park Campground Hosting
Linda and Carl Kurtz, St. Anthony Wildlife Diversity Program Marketing and Promotions Initiative
Michael Lamp, Muscatine Fairport Recreation Area Maintenance and Enhancement

Projects

Dana Livingston, Dubuque Mines of Spain Recreation Area Prairie and Savannah Preservation and Rehabilitation Initiative
Brett Maynes, Orient Green Valley State Park Campground Hosting
Hugh McFadden, Dubuque Mines of Spain Recreation Area Maintenance and Enhancement Projects
Phil Petersen, Okoboji Boating/Water Safety and Water Quality Initiatives
Judy Pooler, Bellevue Bellevue State Park Butterfly Garden Project
Bill Ritchie, Des Moines Union Park Neighborhood Urban Tree Initiative
Bill Schaefer, Des Moines Stephens State Forest Backpacking Trail Project
Mary Sellers, Council Bluffs Lake Manawa State Park Clean-up Day Initiative
Kathy Shannon, Madrid Hunter Safety Education and Outdoor Skills Development Initiative
Mike and Carol Stites, Kimberling, Missouri Red Haw State Park Campground Hosting
Michael Thalman, Earlham Jackrabbit Research Project
Warren Trotter, Fairbank Volga River State Park Maintenance and Enhancement Projects
Erwin "Willy" Wackerbath, Spirit Lake Spirit Lake State Hatchery Walleye, Muskellunge, and Northern Pike Spawning Initiatives
Al Wagner, Muscatine Aquatic Nuisance Species Watercraft Inspections Initiative

OUTSTANDING GROUP VOLUNTEER AWARD

Award Winner

Friends of the Mines of

Spain, Dubuque

Mines of Spain Recreation Area Maintenance, Enhancement, and Improvement Projects and Initiatives

Nominees

Bellevue State Park Butterfly Garden Volunteers, Bellevue Bellevue State Park Butterfly Garden Project
Friends of Becoming an Outdoors-Woman, Des Moines Hunter Safety Education and Outdoor Skills Development Initiative
Friends of Fort Defiance State Park, Estherville Fort Defiance State Park Maintenance, Enhancement, and Improvement Projects and Initiatives
Friends of Melpine School, Muscatine Wildcat Den State Park Melpine School Restoration and Public Education Initiative
Iowa Duckmen, Cedar Rapids Pleasant Creek Recreation Area Maintenance, Enhancement, and Improvement Projects and Initiatives

OUTSTANDING SMALL PROJECT VOLUNTEER

Award Winner

Diane Jacobs, Nodaway Bluebird Project

Nominees

Cornman Triathlon, Gladbrook Union Grove State Park Maintenance, Enhancement, and Improvement Projects and Initiatives
Lake Park and Holding Corporation, Garwin Union Grove State Park Maintenance, Enhancement, and Improvement Projects and Initiatives
Mineral Creek Watershed

Storm Stenciling Project,

Onslow Storm Sewer Water Quality Initiative

OUTSTANDING LARGE PROJECT VOLUNTEER

Award Winner

Friends of Stone State Park, Sioux City Stone State Park Maintenance, Enhancement, and Improvement Projects and Initiatives

Nominee

Friends of Lake Darling State Park, Brighton Friends of Lake Darling State Park Maintenance, Enhancement, and Improvement Projects and Initiatives

OUTSTANDING DNR STAFF VOLUNTEER SUPPORT

Award Winner

Pat Schlarbaum, Natural Resources Technician, Wildlife Diversity Program Lake Red Rock Osprey Volunteer Project Support

Nominees

Kim Bogenschutz, Aquatic Nuisance Species Program Coordinator
 Aquatic Invasive Species Watercraft Inspections Volunteer Initiative Support
 Seed Harvest Unit
Bill Johnson, Biologist, Boone Wildlife Research Station, Brushy Creek State Park
Steve Espeland, Technician, Saylorville Wildlife Unit, Boone Wildlife Research Station
Scott Peterson, Biologist, Saylorville Wildlife Unit, Boone Wildlife Research Station
 Des Moines Area Community College Urban Campus Native Plant Communities Restoration Volunteer Project Support

July

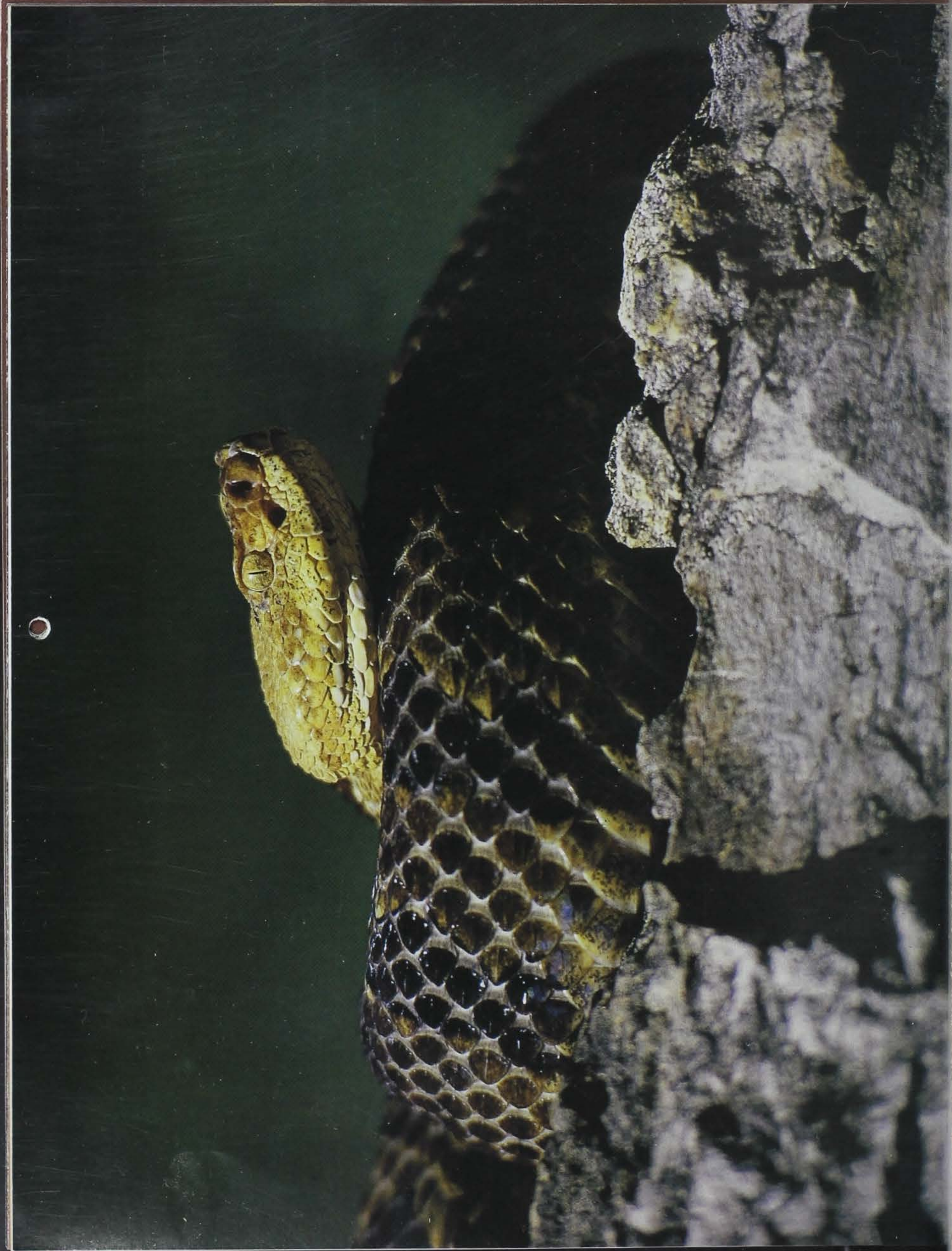


Red fox pups | by Roger A. Hill

Red fox pups are usually born in late March to early April. Typically foxes remodel abandoned dens of other animals to rear their young, but will also use drainage ditches, pond banks, road culverts or abandoned farm buildings.

Sunday	Monday	Tuesday	Wednesday	Thursday	Friday	Saturday
1	2	3	4 Independence Day	5	6	7
8	9	10	11	12	13	14
15	16	17	18	19	20	21
22	23	24	25	26	27	28
29	30	31	<div> <div>June</div> <div> 1 2 3 4 5 6 7 8 9 10 11 12 13 14 15 16 17 18 19 20 21 22 23 24 25 26 27 28 29 30 </div> </div> <div> <div>August</div> <div> 1 2 3 4 5 6 7 8 9 10 11 12 13 14 15 16 17 18 19 20 21 22 23 24 25 26 27 28 29 30 31 </div> </div>			





August



Timber rattlers | by Lowell Washburn

Three species of rattlesnakes can be found in Iowa — the prairie, massasauga and timber. All are either endangered or in a state of decline, each having specific habitat needs. Chances of seeing these snakes are small because they are found in very limited regions of the state.

Sunday	Monday	Tuesday	Wednesday	Thursday	Friday	Saturday
<div><div>July</div><div>12345678910111213141516171819202122232425262728293031</div></div> <div><div>September</div><div>123456789101112131415161718192021222324252627282930</div></div>			1	2	3	4
5	6	7	8	9	10	11
				Iowa State Fair Begins		
12	13	14	15	16	17	18
19	20	21	22	23	24	25
Iowa State Fair Ends						
26	27	28	29	30	31	





September



Canoeing the Upper Iowa River | by **Lowell Washburn**

Take a "road" less traveled and experience Iowa's fall colors from the seat of a canoe or kayak. Iowa has more than 15,000 miles of floatable streams just waiting to be explored. The Upper Iowa River is one of five rivers designated "protected" for its exceptional quality and beauty.

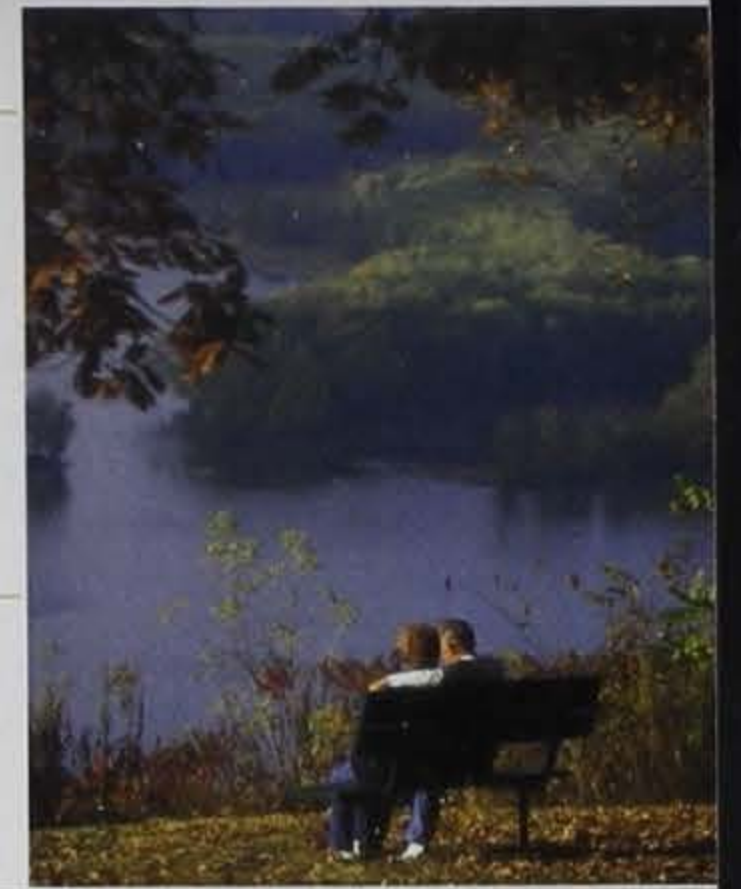


Sunday	Monday	Tuesday	Wednesday	Thursday	Friday	Saturday
August 1 2 3 4 5 6 7 8 9 10 11 12 13 14 15 16 17 18 19 20 21 22 23 24 25 26 27 28 29 30 31		October 1 2 3 4 5 6 7 8 9 10 11 12 13 14 15 16 17 18 19 20 21 22 23 24 25 26 27 28 29 30 31				1
2	3 Labor Day	4	5	6	7	8
9	10	11	12	13 Rosh Hashana	14	15
16	17	18	19	20	21	22
23 Autumn Begins	24	25	26	27	28	28 Yom Kippur
30						



October

Pikes Peak State Park is a favorite destination year-round, but especially in the fall. Stunning color coupled with outstanding views of the Mississippi rival any natural vistas in the country. Make it a point to visit an Iowa state park this fall.



Sunday	Monday	Tuesday	Wednesday	Thursday	Friday	Saturday
	1	2	3	4	5	6
7	8 Columbus Day Observed	9	10	11	12	13
14	15	16	17	18	19	20
21	22	23	24	25	26	27
28 Daylight Savings Time Ends	29	30	31 Halloween	<div><div>September</div><div><div>1</div><div>2345678</div><div>9101112131415</div><div>16171819202122</div><div>23242526272829</div><div>30</div></div><div>November</div><div><div>123</div><div>45678910</div><div>11121314151617</div><div>18192021222324</div><div>252627282930</div></div></div>		





A slight chill in the air, a little crunch of dry grass under foot, the flurry of a covey rise or the cackle of a rooster — it's the makings of a perfect fall day, especially with a loyal hunting companion at your side. Each year, more than 180,000 hunters pursue upland gamebirds in Iowa.



Bobwhite quail | by Roger A. Hill

November

Sunday	Monday	Tuesday	Wednesday	Thursday	Friday	Saturday
October 1 2 3 4 5 6 7 8 9 10 11 12 13 14 15 16 17 18 19 20 21 22 23 24 25 26 27 28 29 30 31		December 1 2 3 4 5 6 7 8 9 10 11 12 13 14 15 16 17 18 19 20 21 22 23 24 25 26 27 28 29 30 31		1	2	3
4	5	6 Election Day	7	8	9	10
11 Veterans' Day	12	13	14	15	16	17
18	19	20	21	22 Thanksgiving	23	24
25	26	27	28	29	30	



White-tailed deer by Roger A. Hill

December

Early in the last century, many Iowans, including some wildlife biologists, felt we would never see deer abundant enough to hunt. Today, thanks to fertile soils and the science-based management of our deer herd, Iowa offers a harvest of more than 200,000 deer annually and world-renowned trophy buck hunting.



Sunday	Monday	Tuesday	Wednesday	Thursday	Friday	Saturday
November 1 2 3 4 5 6 7 8 9 10 11 12 13 14 15 16 17 18 19 20 21 22 23 24 25 26 27 28 29 30		January 1 2 3 4 5 6 7 8 9 10 11 12 13 14 15 16 17 18 19 20 21 22 23 24 25 26 27 28 29 30 31				1
2	3	4	5	6	7	8
9	10	11	12 Hanukkah	13	14	15
16	17	18	19	20	21	22
23	24	25	26	27	28	28 Winter Begins
30	31 New Year's Eve	Christmas				





Cover: Wood duck by Ty Smedes
Left: Iowa sharptail by Roger A. Hill

CONSERVATIONIST

November/December 2006 Volume 65, Number 6

STAFF

Kevin Baskins, Bureau Chief
Julie Sparks, Editor
Alan Foster, Managing Editor
Lowell Washburn, Writer/Photographer
Clay Smith, Photographer
Kati Bainter, Graphic Artist
Circulation, (800) 361-8072
Ad Sales, (515) 440-2810

NATURAL RESOURCE COMMISSION

Joan Schneider, Chair, Okoboji
Randy Duncan, Vice Chair, Des Moines
Elizabeth Garst, Secretary, Coon Rapids
Janice Marcantonio, Council Bluffs
R. Kim Francisco, Lucas
Carol Kramer, Newton
Lennis Moore, Mt. Pleasant

ENVIRONMENTAL PROTECTION COMMISSION

Jerry Peckum, Chair, Jefferson
Francis Thicke, Vice Chair, Fairfield
Lisa Davis Cook, Secretary, West Des Moines
Darrell Hanson, Manchester
Donna Buell, Spirit Lake
Mary Gail Scott, Cedar Rapids
David Petty, Eldora
Suzanne Morrow, Storm Lake
Henry Marquard, Muscatine

DIRECTOR

Jeffrey R. Vonk

DEPUTY DIRECTOR

Liz Christiansen

DIVISION ADMINISTRATORS

Linda Hanson, Management Services
Ken Herring, Conservation and Recreation
Wayne Gieselman, Environmental Services

WEB ADDRESS

www.iowadnr.com

SPECIAL PHONE NUMBERS

Waste Management and Recycling (515) 281-8941
Emergency Spill Response (515) 281-8694
Energy (515) 281-5918
Main Number (515) 281-5918
Turn-In-Poachers (TIP), (800) 532-2020
TTD (515) 242-5967

2008Calendar

January

	1	2	3	4	5
6	7	8	9	10	11
12	13	14	15	16	17
18	19	20	21	22	23
24	25	26	27	28	29
30	31				

February

				1	2
3	4	5	6	7	8
9	10	11	12	13	14
15	16	17	18	19	20
21	22	23	24	25	26
27	28	29			

March

						1
2	3	4	5	6	7	8
9	10	11	12	13	14	15
16	17	18	19	20	21	22
23	24	25	26	27	28	29
30	31					

April

				1	2	3
4	5	6	7	8	9	10
11	12	13	14	15	16	17
18	19	20	21	22	23	24
25	26	27	28	29	30	31

May

			1	2	3
4	5	6	7	8	9
10	11	12	13	14	15
16	17	18	19	20	21
22	23	24	25	26	27
28	29	30	31		

June

						1
2	3	4	5	6	7	8
9	10	11	12	13	14	15
16	17	18	19	20	21	22
23	24	25	26	27	28	29
30	31					

July

				1	2	3
4	5	6	7	8	9	10
11	12	13	14	15	16	17
18	19	20	21	22	23	24
25	26	27	28	29	30	31

August

					1	2
3	4	5	6	7	8	9
10	11	12	13	14	15	16
17	18	19	20	21	22	23
24	25	26	27	28	29	30
31						

September

						1
2	3	4	5	6	7	8
9	10	11	12	13	14	15
16	17	18	19	20	21	22
23	24	25	26	27	28	29
30	31					

October

			1	2	3	4
5	6	7	8	9	10	11
12	13	14	15	16	17	18
19	20	21	22	23	24	25
26	27	28	29	30	31	

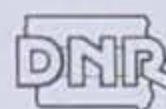
November

						1
2	3	4	5	6	7	8
9	10	11	12	13	14	15
16	17	18	19	20	21	22
23	24	25	26	27	28	29
30						

December

						1
2	3	4	5	6	7	8
9	10	11	12	13	14	15
16	17	18	19	20	21	22
23	24	25	26	27	28	29
30	31					

Federal regulations prohibit discrimination on the basis of race, color, national origin, sex or disability. If you believe that you have been discriminated against in any program, activity, or facility as described above, or if you desire further information, please write to: Director, Iowa Department of Natural Resources, Wallace State Office Building, 502 E. Ninth Ave., Des Moines, Iowa 50319-0034 or the Equal Employment Opportunity Commission, Washington, D. C. 20240





January



February



March



April



May



June



July



August



September



October



November



December

IOWA DEPARTMENT OF NATURAL RESOURCES



WALLACE STATE OFFICE BUILDING
502 E 9TH ST.
DES MOINES, IOWA 50319-0034

Presorted Standard
U.S. Postage
PAID
Des Moines, IA
Permit No. 1195