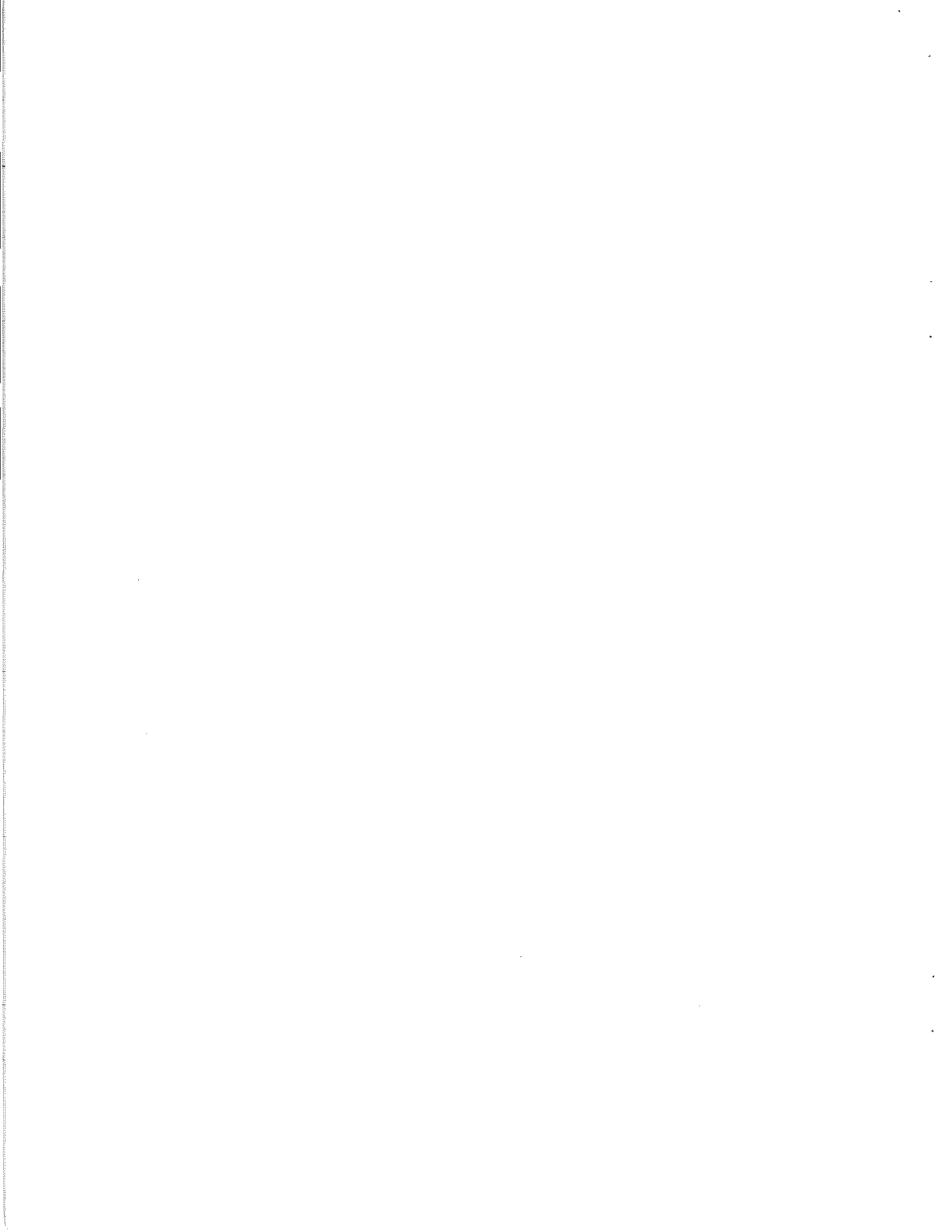


**HD
5710.5
.V46
1979**



Employer Directory

Cedar Rapids, Iowa



A-1 Disposal

Diesel Engine Mechanic - (1) 5.00 hr.
Snow Shoveler - (4) 4.50 hr.
Truck Driver - (2) 4.00 hr.

AAA Motor Club of Iowa

Furniture Mover - (1) 3.00 hr.
Laborer - (1) 5.00 hr.

A & H Home Builders

Laborers - (2) 3.50 hr.

Aamco Transmissions

Mechanic - (1) 4.00 hr.
Part Chaser - (1) 2.90 hr.

Ackerman Roofing

Laborer - (4) 4.50 hr.

Advent Electronics

File Clerk - (1) 3.00 hr.

Air Products & Chemicals

Driver - (1) 5.87 hr.

Alfalfas

Counter Worker - (3) 3.00 hr.

Allen Motor Company

Auto Mechanic - (3) 5.75 hr.
Car Jockey - (1) 3.00 hr.
Car Polisher - (1) 3.00 hr.
Janitor - (1) 3.00 hr.
Steam Cleaner - (1) 3.00 hr.
Undercoater - (1) 3.00 hr.

Allen Supply Co.

Ship & Receiving Clerk - (1) 3.50 hr.

Allen Tire Center

Drive Attendant - (1) 2.90 hr.

Allied Glass

Bookkeeper - (1) 3.25 hr.
Secretary - (1) 3.25 hr.
Switchboard Operator - (1) 3.10 hr.
Telephone Receptionist - (1) 3.15 hr.

Allied Van Lines

Furniture Mover - (9) 5.00 hr.
Laborer - (3) 4.50 hr.

Alta Jacobson

Furniture Mover - (1) 5.00 hr.

Amana Refrigeration

Assembler - (2) 5.43 hr.
Assembler, Air Conditioners - (2) 5.36 hr.
Factory Worker - (11) 5.43 hr.
Industrial Truck Driver - (1) 5.70 hr.

American Red Cross

Director Disaster Svc. - (1) 6.73 hr.

American Travel & Tour

Travel Agent - (1) 4.90 hr.

Americana Health Center

Kitchen Helper - (1) 2.90 hr.

Answer Iowa

Telephone Operator (1) 2.90 hr.

Applegate Landing

Kitchen Supervisor - (1) 3.00 hr.

Approved Lighting

Fixture Washer - (2) 3.00 hr.

Aquarium Lounge

Cocktail Server - (2) 3.00 hr.

Ardan's

Cashier - (4) 2.75 hr.

Inventory Clerk - (7) 2.90 hr.

Laborer - (2) 2.90 hr.

Armstrong & Associates

Office Worker - (1) 3.75 hr.

Athletes Foot

Assistant Store Manager - (1) 2.90 hr.

B & F Transfer

Laborer - (8) 5.00 hr.

B & H Tank

Welder Trainee - (1) 3.50 hr.

Babcock & Wilcox

Office Clerk - (1) 5.50 hr.

Banks of Iowa Inc.

Computer Operator - (2) 4.50 hr.

Key Punch Operator - (1) 3.50 hr.

Sorter Operator - (1) 3.15 hr.

Barbers Excavating

Laborer - (1) 4.00 hr.

Barker Shoe Store

Shoe Sales - (2) 2.65 hr.

Barnard & Leas

Receptionist - Swbd. Opr. - (1) 3.45 hr.

Welder - (5) 5.00 hr.

Welder - Production Arc - (1) 5.30 hr.

Bartels Standard

Drive Attendant - (2) 3.00 hr.

Batesville Caskets

Driver - (1) 5.50 hr.

Bausch & Lomb

Precision Lens Grinder - (1) 3.30 hr.

Bedford Tire Company

Tire Mounter - (1) 2.65 hr.

Bekins Van Lines

Laborer - (2) 4.25 hr.

Bentley Machine Company

Machinist - (1) 4.00 hr.

Beldon Hill

Warehouse Worker - (1) 3.25 hr.

Best Rental

Bookkeeper - (5) 2.90 hr.
Rental Clerk - (1) 3.00 hr.

Big Yellow House

Food Server - (1) 3.00 hr.
Waiter - (2) 2.90 hr.
Waitress - (1) 3.00 hr.

Borst Upholstery

Sewing Machine Operator - (1) 3.00 hr.
Upholsterer - (1) 3.00 hr.

Burroughs Corporation

Electronic Service Tech, - (1) 5.00 hr.
Machine Repair - (1) 5.00 hr.

Bush Hog-Kraus

Parts Clerk - (1) 5.00 hr.
Parts Clerk Utility - (1) 5.00 hr.

Butterfly Cafe

Waiter-Waitress - (1) 2.00 hr.

Byers & Happs

Bookkeeper - (1) 4.00 hr.

C. R. S. T.

File Clerk - (1) 3.25 hr.

Cedar Rapids Arts Center

Gallery Attendant - (1) 2.65 hr.

Cedar Rapids Art Gallery

Programs Assistant - (1) 4.35 hr.

Cedar Rapids Block Company

Industrial Truck Operator - (1) 6.40 hr.

Cedar Rapids Community Schools

Food Service Asst. - (1) 2.72 hr.
Food Service Worker - (1) 2.90 hr.
Teacher Aide - (3) 3.30 hr.
Teacher Associate - (1) 3.40
Teacher Elementary Sub. - (1) 3.70 hr.

Cedar Rapids Community Theatre

Performer-Child. Thtr. (3) 3.75 hr.

CR. Hide & Fur

Hide Handler - (1) 4.00 hr.

CR. Roofing

Laborer - (14) 5.90 hr.

CR. Street Department

Maintenance Worker I - (1) 4.19 hr.

CR. Transmission

Auto Mechanic - (1) 4.00 hr.

Cargill

Computer Operator - (1) 3.06 hr.
Laborer - (2) 6.27 hr.
Material Handler - (1) 6.27 hr.
Plant Clerk Typist I - (1) 3.75 hr.
Processor Helper - (1) 6.27 hr.
Technical Secretary - (1) 4.33 hr.

Carney & Hancock

Laborer - (6) 3.25 hr.

Carpet King

Backroom Worker - (1) 3.00 hr.

Cedar Apartments

Snow Remover - (2) 4.00 hr.

Cedar Memorial

Secretary - Bookkeeper - (2) 4.04 hr.

Cedar Manufacturing

Fiberglass Machine Tender - (6) 4.60 hr.

Cedar Rapids Dodge

Cleaner - (1) 3.00 hr.
Clerical Worker - (1) 3.65 hr.
Lot Worker - (1) 3.00 hr.
Title Clerk - (1) 3.50 hr.

Cedar Rapids Honda

Service Manager - (1) 5.00 hr.

Cedar Rapids School

Cafeteria Worker - (2) 2.90 hr.
Food Service Worker - (2) 2.74 hr.
Teacher Aide - (3) 3.25 hr.
Teacher Aide - (5) 3.30 hr.
Teacher Aide - (3) 4.25 hr.
Teacher Aide - (2) 3.50 hr.
Teacher Assoc. - (3) 3.40 hr.

Cedar Service

Construction Worker - (1) 5.00 hr.

Cedar Terrace

Bldg. & Grounds Worker - (1) 4.00 hr.

CEI Truck & Agric. Equip.

Laborer - (1) 3.50 hr.

Century Engineering

Accounting Clerk - (1) 3.50 hr.
Assembler - (11) 5.54 hr.
Keypunch Operator - (1) 3.45 hr.
Machine Operator - (1) 5.89 hr.
Welder - (1) 6.05 hr.

Ceta Operations

Asst. Team Manager - (1) 6.05 hr.
Carpenter - (9) 3.50 hr.
Communication Tech. - (1) 4.30 hr.
Day Program Aide - (1) 3.00 hr.
Inventory Clerk - (1) 2.90 hr.
Library Materials Proc. - (1) 3.69 hr.
Maintenance Worker I - (4) 4.19 hr.
Office Manager - (1) 3.00 hr.
Program Director - (1) 4.34 hr.

Chandler Co.

Warehouse Worker - (1) 5.91 hr.

Chappies Lounge

Cook - (1) 3.00 hr.

Charter Coaches

Dispatcher - (1) 2.90 hr.
Van Driver - (1) 2.90 hr.

Cherry Burrell

Accounting Clerk - (1) 3.00 hr.
Data Flow Controller - (1) 3.20 hr.
General Clerk - (1) 3.00 hr.
Keypunch Clerk - (2) 3.40 hr.
Machine Operator - (6) 5.50 hr.
Office Worker - (1) 3.35 hr.
Plater - (1) 5.34 hr.
Polisher - (3) 5.56 hr.
Public Relations - (1) 3.89 hr.
Secretary - (1) 4.00 hr.
Sheet Metal Worker - (1) 5.59 hr.
Welder - (3) 5.69 hr.

Chesapeake Investigators

Guard - (8) 3.00 hr.

Chicago Northwestern

Laborer - (4) 4.25 hr.

Childrens Home of C.R.

Secretary - (1) 4.04 hr.

Chipokas & Koehler

Legal Secretary - (1) 3.46 hr.

Cimino Distributing Co.

Sales Representative - (1) 5.00 hr.

City Bus Lines

Bus Driver - (4) 5.80 hr.

City of Cedar Rapids

Asst. EEOC Officer - (1) 5.81 hr.
Auto Equip. Mechanic III - (1) 6.92 hr.
Bldg. Maint. Wkr. I - (3) 4.32 hr.
Ceta Monitor - (1) 5.57 hr.
Clerk Typist - (1) 3.80 hr.
Clerk Typist - (1) 3.00 hr.
Clerk Typist II - (1) 4.11 hr.
Employment Analyst - (1) 5.35 hr.
Equipment Svc. Wkr. - (1) 5.68 hr.
Human Rights Officer - (1) 5.13 hr.
Interviewer - (1) 5.63 hr.
Janitor - (1) 5.06 hr.
Lab Analyst - (2) 5.52 hr.
Laborer - (2) 4.00 hr.
Maint. Repair Wkr. I - (1) 5.08 hr.
Maint. Repair Wkr. III - (1) 5.57 hr.
Maint. Wkr. - (1) 4.49 hr.
Parking Attendant - (2) 3.72 hr.
Police Records Tech. - (1) 3.75 hr.
Sewer Maint. Wkr. III - (1) 4.49 hr.
Snow Plow Operator - (1) 5.00 hr.
Store Keeper Transit - (1) 4.53 hr.
Water Meter Reader - (2) 4.96 hr.

Clark & Sons

Construction Wkr. - (1) 5.00 hr.

Clark Station

Attendant - (2) 2.65 hr.
Auto Self-serve Attnd. - (1) 2.90 hr.

Coast To Coast

Sales Clerk - (1) 2.90 hr.
Small Engine Mech. - (1) 2.90 hr.

Coca - Cola Bottling Co.

Cleaner - (1) 3.90 hr.
Diesel Mech. Helper - (1) 4.50 hr.
Night Loader - (1) 3.90 hr.
Truck Mechanic - (1) 4.60 hr.

Cody Plumbing & Heating

Plumbers Helper - (1) 3.00 hr.

Coe College

Secretary - (1) 3.50 hr.

Cold Stream Poultry Farm

Truck Driver - (1) 3.50 hr.

College Community School

Clerical Aide - (1) 3.10 hr.
Cook - (1) 2.90 hr.
Custodial Trainee - (3) 3.50 hr.
Custodian I - (1) 4.03 hr.
Paraprofessional - (1) 2.97 hr.

Rockwell International - Collins

Assembler - (1) 4.69 hr.
Assembler - (1) 4.16 hr.
Assembly Operator - (1) 4.16 hr.
Clerk, General - (3) 3.55 hr.
Clerk, General - (1) 3.08 hr.
Clerk, General - (1) 3.95 hr.
Clerk Typist - (2) 3.50 hr.
Clerk Typist - (2) 3.55 hr.
Clerk Typist - (2) 2.90 hr.
Clerk Typist - (1) 4.58 hr.
Clerk Typist I - (1) 3.25 hr.
Clerk Typist II - (1) 3.08 hr.
Custodian - (3) 4.86 hr.
Deburrer - (8) 4.34 hr.
Designer - (1) 9.25 hr.
Electrical Engineer - (1) 7.50 hr.
Electronics Technician - (1) 7.00 hr.
Finishing Dept. Opr. - (2) 4.16 hr.
Management Analyst - (2) 5.63 hr.
Numerical Records Clerk - (1) 2.90 hr.
Numerical Records Clerk - (1) 3.08 hr.
Packer - (1) 4.16 hr.
Payroll Clerk - (1) 3.55 hr.

Rockwell International - Collins Cont.

Planer Assembly - (1) 4.16 hr.
Punch Press Operator - (4) 5.20 hr.
Purchase Modular Clerk - (1) 3.23 hr.
Records Clerk II - (2) 3.08 hr.
Secretary - (1) 3.95 hr.
Secretary - (1) 4.03 hr.
Secretary - (1) 3.25 hr.
Secretary - (1) 3.55 hr.
Secretary - Bkcp. - (1) 3.83 hr.
Technical Illustrator - (1) 5.20 hr.
Test Operator - (1) 5.20 hr.
Test Equip. Design Eng. - (1) 8.33 hr.
Test Technician - (1) 7.00 hr.
Test Technician - (20) 5.86 hr.
Typist - (1) 3.08 hr.

Colonial Baking Co.

Office Worker - (1) 3.40 hr.

Colorado Depot

Cook - (1) 3.75 hr.

Cookman Security

Security Guard - (3) 2.85 hr.

Coors Distributing Co.

Warehouse Worker - (1) 5.63 hr.

Community Correction Center

Corrections Worker - (1) 4.90 hr.
Worker - (2) 3.15 hr.

Compositors

Typist - (1) 4.00 hr.

Corn Sweetners

Office Worker - (1) 3.50 hr.

Cornell College

Security Guard - (1) 3.50 hr.

Council on Aging

Director Vol. Service - (1) 5.53 hr.

Country Kitchen

Cook - (2) 2.90 hr.
Dishwasher - (2) 2.90 hr.
Food Server - (5) 1.50 hr.
Waiter - Waitress - (4) 1.50 hr.

Courthouse Cafeteria

Bus Person - (1) 2.50 hr.
Kitchen Helper - (1) 2.50 hr.

Crandic Railway

Backcoupler - (1) 3.98 hr.

Cryovac

Laborer, Plastics - (1) 6.00 hr.
Molder - (2) 6.00 hr.

Cummins Great Plains

Ship & Recvc. Worker - (3) 5.77 hr.

Curtiss Industries

Sales Representatives - (3) 5.77 hr.

Custom Components

Carpenter - (1) 5.27 hr.

Custom Floor Covering

Bookkeeper - (1) 3.00 hr.

Cutler Williams

Programmer Analyst - (1) 5.77 hr.

D & E Distributing

Material Handler - (1) 4.00 hr.

Dahl Motors

Lot Worker - (1) 3.00 hr.

Danish Maid Bakery

Baker - (1) 3.00 hr.

Sales Clerk - (1) 2.55 hr.

Dearborn Brass

Sales Secretary - (1) 3.40 hr.

Debolt

Snow Shoveler - (1) 3.00 hr.

Deeco

Billing Clerk - (1) 3.00 hr.

Billing Clerk - (1) 4.62 hr.

Inside Salesperson - (1) 5.00 hr.

Purchasing Secretary - (1) 3.03 hr.

Ship & Receiving Clerk - (1) 3.03 hr.

Dept. Adult Correction

Correction Worker - (1) 4.96 hr.

Demuth Detective Agency

Janitor - (6) 3.00 hr.

Receptionist - (1) 2.90 hr.

Dept. Correctional Services

Worker - (2) 3.15 hr.

Dept. of Social Services

Social Worker Group - (1) 5.10 hr.

Dept. of Transportation

Eng. Asst. Mech. Equip. - (1) 5.00 hr.

Des Moines Register

Carrier Supervisor - (1) 5.00 hr.

Dewild Grant Rechart

Surveyor Helper Rod - (1) 2.75 hr.

Diamond V Mills

Mill Hand - (2) 4.90 hr.

Divine Engineering

General Maint. Worker - (1) 5.00 hr.
Janitor - (1) 4.75 hr.

Dolly Madison Cake

Sales Clerk (1) 3.48 hr.

Donutland

Baker (1) 3.80 hr.

Dot

Maint. Transportation (1) 4.39 hr.

Dx Oil Company

Material Handler - (1) 3.00 hr.

Edgewood Manor

Nurse Aide - (1) 2.90 hr.

Elks Club

Dishwasher - (1) 2.90 hr.

Ellis YMCA

Program Director - (1) 4.71 hr.

Era Water Treatment

Secretary - (1) 3.00 hr.

Erbs Office Services

Office Mach. Server - (1) 4.50 hr.

Executive Realtors

Office Worker - (1) 3.46 hr.

F.M.C.

Accountant - (1) 9.25 hr,
Clerk Typist - (2) 4.00 hr.
Drafter - (1) 5.20 hr.
Lab Tech. Testing Clk. - (1) 6.25 hr.
Machinist - (2) 7.40 hr.
Mail Clerk - (1) 3.25 hr.

F & W Truck

Mechanic - (2) 3.50 hr.
Mechanic - (1) 4.00 hr.
Parts Runner - (1) 3.00 hr.

Farmland Industries

Warehouse Person - (1) 5.95 hr.

Farmers State Bank

Head Bookkeeper - (1) 3.30 hr.
Receptionist - (1) 2.90 hr.
Teller - (1) 2.90 hr.

First Lutheran Church

Custodial, Security Wkr. - (1) 3.50 hr.

First Mid America

General Office Clerk - (1) 3.46 hr.

First Trust & Savings

Teller - (1) 3.25 hr.

Flame Room

Cocktail Waitress - (1) 1.75 hr.
Dishwasher - (1) 2.70 hr.

Flavor Kist

Sales Represenative - (1) 5.00 hr.

Fogarty, Dr. Gerald

Laborer - (1) 7.50 hr.
Receptionist - (1) 3.46 hr.

Frank Magid Associates

Proofreader - (1) 3.50 hr.

G & S Organ Specialist

Secretary - (1) 3.00 hr.

Gab Business Service

Secretary - (1) 3.32 hr.

Gail Industries

Drafter - (1) 5.29 hr.
Towel Folder - (10) 2.65 hr.

Gallery Lanzberg

Framer - (2) 3.50 hr.

Gatsbys

Light & Sound Operator - (1) 4.00 hr.

General Growth

Maintenance Person - (1) 2.65 hr.

Gazette Co.

Press Room Janitor - (1) 3.50 hr.
Proof Dispatch Clerk - (1) 3.00 hr.

General Maintenance

Laborer - (2) 3.00 hr.

General Mills

Maintenance Mechanic - (1) 8.38 hr.
Production Helper - (1) 6.51 hr.
Production Worker - (1) 6.61 hr.

Genes Import Service

Parts Inventory Clerk - (1) 3.00 hr.
Parts Sales Trainee - (1) 3.00 hr.

Gephart Construction

Laborer - (2) 4.00 hr.
Laborer - (1) 4.50 hr.

Gibson Realtors

Receptionist - (1) 2.95 hr.

Globe Machinery

Sales Bldg. Materials - (1) 9.00 hr.

Global Van Lines

Furniture Mover - (2) 4.00 hr.

Goodwill

Platescraper - (1) 2.90 hr.

Goss Co.

Assembler - (1) 7.80 hr.
Assembler - (3) 7.50 hr.
Keypunch Opt. - (1) 3.54 hr.
Laborer - (1) 3.89 hr.
Laborer - (1) 7.50 hr.
Machine Operator - (1) 8.32 hr.
Machinist - (1) 7.80 hr.
Machinist - (1) 9.35 hr.
Production Scheduler - (1) 5.72 hr.

Granger W W Inc.

Warehouse Worker - (2) 4.27 hr.

Grantwood AEA

Clerk Typist - (1) 3.37 hr.

Green Square Tavern

Bartender - (1) 3.25 hr.
Laborer - (1) 5.00 hr.

Gregory's

Bartender - (1) 3.00 hr.
Bookkeeper - (1) 3.75 hr.
Bookkeeper - (1) 3.46 hr.
Bus Person - (2) 2.90 hr.
Cook - (1) 2.90 hr.
Dishwasher - (1) 2.65 hr.
Food Server - (5) 2.05 hr.

Ground Round

Janitor - (1) 2.90 hr.

Guaranty Bank

Janitor - (1) 3.50 hr.
Messenger - (1) 3.00 hr.
Secretary - (1) 3.75 hr.
Teller - (3) 3.00 hr.

HACAP

Carpenter - (1) 3.50 hr.
Clerk Typist - (1) 2.90 hr.
Energy Worker - (1) 3.50 hr.
Office Assistant - (1) 3.25 hr.
Operations Manager - (1) 6.05 hr.

Hall Home Furnishings

Warehouse Person - (1) 3.50 hr.

Hamilton Co.

Laborer - (2) 3.50 hr.

Hamm, Dr. John

Medical Assistant - (1) 4.00 hr.

Handler Co.

Sales Representative - (1) 5.00 hr.

Hanson Construction Co.

Laborer - (1) 7.86 hr.

Harnischfeger

Clerk Typist - (1) 3.17 hr.
Fab Machine Operator - (1) 6.56 hr.
General Factory Wkr. - (12) 7.49 hr.
Laborer - (1) 7.50 hr.
Machine Helper - (1) 6.31 hr.
Machine Opt. Trainee - (2) 6.87 hr.
Material Control Clerk - (1) 3.55 hr.
Metal Finisher Asst. - (1) 6.53 hr.
Welder - (1) 7.80 hr.
Welder - (2) 6.56 hr.

Harper & McIntire

Adjustment Clerk - (1) 3.00 hr.
Buyers Assistant - (1) 3.20 hr.
Laborer - (1) 4.35 hr.
Material Handler - (1) 4.35 hr.

Harvestall

Construction Wkr. - (1) 4.50 hr.

Hauk, Lyle

Driver - (1) 2.90 hr.

Hawk Bilt Co.

Secretary - (1) 3.50 hr.

Hawkeye Movers

Furniture Movers - (1) 4.00 hr.

Hawkeye Oil Co.

Office Worker - (1) 3.00 hr.

Hawkeye Rubber

Factory Worker - (3) 4.20 hr.
Laborer - (1) 4.20 hr.

Hawkeye Seed

General Clerk - (1) 2.90 hr.
Laborer - (29) 3.00 hr.
Material Handler - (1) 3.00 hr.

Health Hut

Salesperson - (1) 3.00 hr.

Highway Equipment

Accountant - (1) 7.25 hr.
Office Worker - (1) 3.00 hr.
Welder Trainee - (2) 3.50 hr.

Hillcrest Family Service

Secretary, Office Mgr. - (1) 3.50 hr.

Holley's

General Office Mgr. - (1) 3.46 hr.

Holmes Serum Co.

Warehouse Worker - (1) 3.00 hr.

House of Carpet

Laborer - (2) 3.00 hr.

Laborer - (2) 5.00 hr.

Hy Vee Bakery

Baker - (1) 6.00 hr.

I.B.M.

Admin. Accounts Spec. - (1) 4.04 hr.

Customer Engineer - (2) 3.85 hr.

Ideal Floors

Carpet Layer Helper - (1) 3.00 hr.

Iltens

Delivery Helper - (1) 4.00 hr.

Indian Creek Nature Center

Building Renovator - (1) 3.75 hr.

Industrial Engineer Equipment

Secretary - (1) 3.46 hr.

International Harvester

Service Center Clerk - (1) 3.95 hr.

Interstate Collection Bureau

Clerical Worker - (1) 3.17 hr.

Iowa Electric Light & Power Co.

Clerk - (1) 2.90 hr.

Clerk Typist - (2) 4.13 hr.

Dept. Secretary - (1) 5.25 hr.

Personnel Records Clerk - (3) 4.00 hr.

Security Guard - (7) 4.62 hr.

Temp. Printing Clerk - (1) 3.25 hr.

Utility Worker - (1) 6.10 hr.

Iowa Machinery & Supply

Sales, Inside - (1) 4.04 hr.

Iowa Manufacturing Co.

Asst. Parts Editor - (1) 6.00 hr.

Controller - (1) 3.75 hr.

Cost Clerk - (1) 5.00 hr.

Detailer - (2) 5.00 hr.

Hydraulic Press Operator - (1) 7.42 hr.

Insp. Records Clerk - (1) 4.00 hr.

Key Punch Operator - (2) 3.55 hr.

Machine Burner - (1) 7.12 hr.

Machine Operator - (1) 7.40 hr.

Machinist - (2) 7.20 hr.

Machinist - (1) 7.42 hr.

Machinist - (1) 7.53 hr.

Mail Clerk - (1) 3.00 hr.

Messenger - (1) 3.00 hr.

Oiler - (1) 7.30 hr.

Parts Cataloger - (1) 7.00 hr.

Sales Engineer - (1) 5.75 hr.

Screw Machine Operator - (1) 7.42 hr.

Senior Drafter - (2) 4.00 hr.

Shear Helper - (1) 7.20 hr.

Shear Operator - (1) 7.33 hr.

Tacker - (2) 7.42 hr.

Turret Lathe Operator - (3) 7.42 hr.

Utility Worker - (3) 7.20 hr.

Welder - (1) 7.00 hr.

Welder - (3) 7.42 hr.

Iowa Mens Reformatory

Guard - (1) 3.38 hr.

Iowa Midland Supply

Billing Clerk - (1) 3.25 hr.

Receptionist - (1) 3.25 hr.

Iowa National Mutual Insurance

Accounting Clerk - (1) 3.46 hr.

Dictaphone Operator - (1) 3.69 hr.

Iowa News

Accounts Payable Clerk - (1) 3.61 hr.

Bookkeeper - (1) 3.61 hr.

Laborer - (2) 3.00 hr.

Laborer - (1) 3.30 hr.

Material Handler - (3) 2.90 hr.

Material Handler - (4) 3.30 hr.

Packager Hand - (2) 3.30 hr.

Secretary - (1) 3.61 hr.

Warehouse Worker - (1) 3.30 hr.

Iowa Precision Industries

Office Worker - (1) 3.75 hr.

Iowa Rivet Tool Co.

Sheet Metal Worker - (1) 6.00 hr.

Iowa State Liquor Store

Liquor Store Clerk - (2) 3.23 hr.

Iowa Steel & Iron Works

Grinder - (10) 6.39 hr.

Milling Machine Operator - (1) 7.50 hr.

Iseman Mobile Homes

Salesperson - (1) 3.46 hr.

J & F Roofing

Snow Shoveler - (2) 4.00 hr.

J.N. Fauver

Secretary, Clerk Typist - (1) 3.00 hr.

J.W. Phares Co.

Warehouse Worker - (1) 3.00 hr.

Jacobson Construction

Laborer - (2) 4.00 hr.

Janda Electric Motor Service

Electric Motor Repairer - (1) 4.00 hr.

Truck Driver - (1) 4.00 hr.

Jansen Imports

Body Repairperson - (1) 2.65 hr.

Jensen Construction

Form Setter Trainee - (1) 7.00 hr.

Job Service of Iowa

Clerk, General - (1) 3.15 hr.

Jo E Dos

Waiter - Waitress - (3) 1.75 hr.

Jorm Micro Laboratory

Laborer - (2) 5.00 hr.

Judys

Cashier Kitchen Worker - (1) 2.90 hr.

Ju-It Corp.

Manager Trainee - (6) 4.13 hr.

Junior Achievement

Secretary - (1) 2.79 hr.

K Mart West

Loader - (2) 3.00 hr.

Keith Debolt

Material Handler - (1) 3.00 hr.

Plumber Helper - (1) 3.00 hr.

Kellys Inc.

Front Office Person - (1) 4.00 hr.

Kelly Services

Clerk, General - (5) 3.25 hr.

Kelty Radiator Co.

Milling Machine Operator - (1) 6.00 hr.

Kenwood Animal Clinic

Dog Groomer - (1) 3.00 hr.

Kenwood Moving

Laborer - (1) 5.00 hr.

Kenwood Phillip 66

Gas Station Attendant - (1) 2.90 hr.

Kilborn Photo Products

Laboratory Assistant - (1) 4.13 hr.

Killians Kitchen

Food Server - (1) 2.90 hr.

Sales Person - (1) 2.90 hr.

Kings Guard Cleaners

Alternation Tailor - (1) 3.25 hr.

Kirkwood Community College

Academic Advisor Aide - (1) 3.75 hr.

Accounts Payable Bk. - (1) 3.25 hr.

Animal Caretaker - (2) 2.90 hr.

Archival Clerk - (1) 3.61 hr.

Archival Coordinator - (1) 4.33 hr.

Assistant Professor - (1) 6.25 hr.

Associate Superintendant - (1) 8.65 hr.

Athletic Equipment Attd. - (1) 2.90 hr.

Kirkwood Community College - Con't.

Book Clerk - (1) 2.90 hr.
Clean Up Worker - (1) 2.90 hr.
Clerk - (1) 3.23 hr.
Clerk Typist - (1) 3.26 hr.
Community Education Area
 Head Monitor - (1) 5.77 hr.
Computer Operator - (1) 4.74 hr.
Counselor, Veteran
 Up Bound - (2) 6.25 hr.
Data Process. Clerk - (5) 2.90 hr.
Data Process. Sec. - (1) 5.53 hr.
Distribution Clerk - (1) 2.90 hr.
Electronics Tech. - (1) 4.38 hr.
Farm Worker - (1) 2.90 hr.
File Clerk - (1) 2.90 hr.
Film Clerk - (1) 2.90 hr.
Finan. Aide Bookkeeper - (4) 3.51 hr.
General Secretary - (1) 2.90 hr.
Grants Secretary - (1) 2.90 hr.
Grants Develop. Off. - (1) 6.97 hr.
Graphic Artist - (1) 2.90 hr.
Horticultural Technician
 Assistant - (1) 4.35 hr.
Instructional Aid - (1) 2.90 hr.
Janitor - (2) 2.90 hr.
Lab. Assistant - (5) 2.90 hr.
Lab. Supervisor - (1) 3.56 hr.
Lead Instructor, Semi - (1) 5.77 hr.
Lead Systems Prog. - (1) 5.48 hr.
Library Clerk - (1) 2.90 hr.
Library Clerk - (8) 3.05 hr.
Media Assistant - (1) 3.90 hr.
Media Production
 Assistant - (1) 3.90 hr.
Medical Records Clerk - (1) 2.90 hr.
Messenger - (1) 2.90 hr.
Nursery Worker - (3) 2.90 hr.
Office Clerk - (3) 2.90 hr.
Placement Clerk - (1) 3.05 hr.
Printer Helper - (1) 2.90 hr.
Program Producer - (1) 4.05 hr.
Psychology Instructor - (1) 6.73 hr.
Sales Clerk - (3) 2.90 hr.
Secretary - (4) 2.90 hr.
Secretary, Business
 Education - (1) 3.76 hr.
Secretary, Community
 College - (1) 3.36 hr.
Secretary, Graphics - (1) 2.90 hr.
Secretary, Media - (1) 3.49 hr.
Shipping & Receiving Clk. - (1) 2.90 hr.
Teacher Aide - (1) 2.90 hr.
Traffic Clerk - (1) 3.50 hr.

Kleen Leen

CRT Operator - (1) 3.25 hr.

Klinger Paint

Lab Worker - (1) 3.00 hr.
Labeler - (1) 3.00 hr.
Laborer - (11) 3.00 hr.
Material Handler - (2) 3.00 hr.
Utility Worker - (1) 3.00 hr.

Kock Bros.

Customer Ser, Rep. - (1) 4.09 hr.

Kool RJ Co.

Secretary - (1) 3.46 hr.

Kwik-Way Mfg. Co.

Data Entry Clerk - (1) 3.00 hr.
Drill Press Oper. - (1) 5.72 hr.
Laborer - (1) 5.73 hr.
Laborer - (3) 4.05 hr.
Mechanical Engineer - (1) 9.62 hr.
Office Worker - (1) 3.13 hr.
Snow Shoveler - (1) 4.50 hr.
Surface Grinder - (1) 6.80 hr.

Langer Manufacturing

Laborer - (14) 4.00 hr.

Lee Painting & Const.

Carpenter Laborer - (2) 2.75 hr.

Lefebure

Assembler - (7) 6.53 hr.
Assembler Fitter - (1) 6.36 hr.
Bookkeeper - (1) 3.52 hr.
Cleaner, Industrial - (1) 6.22 hr.
File Clerk - (2) 3.00 hr.
Janitor, Industrial - (1) 6.65 hr.
Laborer - (17) 5.73 hr.
Laborer - (4) 5.00 hr.
Material Handler - (1) 5.73 hr.
Material Handler - (2) 6.53 hr.
Programmer - (1) 5.77 hr.
Snow Shoveler - (4) 5.20 hr.
Utility Worker - (1) 6.54 hr.

Life Investors

Clerk, General - (1) 3.32 hr.
Clerk Typist - (1) 3.25 hr.
Programmer - (1) 3.38 hr.

Lilly Printing

Offset Dup. Mach. - (1) 3.00 hr.

Linn Coop. Oil Co.

Secretary, Sales - (1) 4.00 hr.
Tire Repairer - (1) 4.50 hr.

Linn County Court House

Activities Coord. - (1) 4.93 hr.
Clerk Typist I - (3) 3.18 hr.
Clerk Typist II - (4) 3.50 hr.
Clerk Typist I - (3) 3.18 hr.
Communications Aide - (1) 3.50 hr.
Comb. Inspector Trainee - (1) 5.44 hr.
Cook - (1) 3.50 hr.
Custodian - (1) 3.50 hr.
Counselor - (1) 4.81 hr.
Day Care Instructor - (1) 3.33 hr.
Driver, Custodian - (2) 3.50 hr.
Investigator I - (1) 5.18 hr.
Laborer - (6) 3.50 hr.
Nurse Aide - (3) 3.28 hr.

Outreach Worker - (1) 3.50 hr.
Project Director - (1) 6.73 hr.
Radio Dispatcher - (2) 4.13 hr.
Secretary III - (1) 3.75 hr.
Social Services Assoc. - (1) 4.26 hr.
Youth Counselor II - (1) 4.70 hr.
Youth Worker I - (1) 3.86 hr.

Linn County Extension Service

Family Food Aid - (3) 3.18 hr.

Linn County Psychiatric Clinic

Medical Records Clerk - (1) 3.21 hr.
Office Manager - (1) 5.00 hr.

Linn County Social Service

Caseworker - (1) 5.59 hr.

Loftus Distribution Co.

Office Worker - (1) 3.50 hr.

Lone Star Life Insurance

Branch Secretary - (1) 4.04 hr.

Long John Silvers

Manager Trainee - (1) 4.25 hr.

Long Metal Products

Welder - (5) 5.00 hr.

Long's Repair Service

Mechanic - (1) 3.00 hr.

Louisiana Purchase

Dishwasher Mach. Opr. - (2) 2.90 hr.

Luedemans Hauling

Truck Driver & Helper - (1) 4.00 hr.

Lyle Hank

Driver - (1) 2.90 hr.

MGD Graphic System

Machinist - (1) 8.32 hr.

M & J Feeds

Laborer - (1) 3.00 hr.

Maaco

Auto Body Repairer - (1) 3.75 hr.

Mack, F W

Driver - (1) 3.75 hr.

Manpower Services

Laborer - (1) 3.50 hr.

March of Dimes

Executive Director - (1) 3.94 hr.

Martin Marietta

Accounting Clerk - (2) 3.45 hr.

Engineer - (2) 6.25 hr.

Planning & Development

Engineer - (1) 6.25 hr.

Matson Truck Line

Truck Mechanic - (1) 4.50 hr.

Mayflower Van

Laborer - (12) 5.00 hr.

McCoy, Paul & Co.

Office Worker - (2) 3.50 hr.

McDonalds

Cashiers - (6) 2.65 hr.

Kitchen Help - (4) 2.65 hr.

Maintenance Person - (1) 3.15 hr.

McGrath Pontiac

Car Jockey - (1) 2.90 hr.

Warranty Clerk - (1) 3.00 hr.

McKesson & Robbins

Accounts Receivable

Clerk - (1) 3.50 hr.

McNamara Oil

Warehouse Worker - (1) 3.50 hr.

McWhinney, Dr. Jon C.

Dental Assistant - (1) 3.17 hr.

Merit Employment Department:

Merit Beer & Liquor Commission

Liquor Store Clerk - (4) 3.94 hr.

Department of Social Services

Claims Specialist I - (1) 5.03 hr.

Clerk IV - (1) 4.21 hr.

Clerk Steno II - (2) 3.55 hr.

Clerk Typist II - (3) 3.55 hr.

Clerk Typist III- (3) 5.30 hr.

Community Correctional

Service Worker II - (1) 6.10 hr.

Motor Vehicle Off. I - (1) 3.71 hr.

Social Worker II - (4) 5.51 hr.

Social Worker III - (2) 5.51 hr.

Iowa Department of Transportation

Engineering Aid I - (2) 4.05 hr.

Engineering Aid II - (3) 4.21 hr.

Equipment Operator II - (3) 4.05 hr.

Equipment Operator III- (2) 4.72 hr.

Iowa Department of Job Service

Emergency Employment Act

Intern - (1) 5.03 hr.

Menards

Carpet Salesperson - (1) 4.35 hr.

Cashier, General - (1) 4.13 hr.

Mental Health Association

Secretary - (1) 2.90 hr.

Mental Health Association

Secretary - (1) 2.90 hr.

Merchants National Bank

Cafeteria Worker - (3) 2.90 hr.

Messenger - (4) 3.15 hr.

Parking Lot Attendant - (1) 2.90 hr.

Teller - (1) 2.90 hr.

Mercy Hospital

Care Giver - (1) 3.22 hr.

Cataloger - (1) 3.55 hr.

Clerk, General - (1) 3.50 hr.

Painter, Repairer - (1) 5.19 hr.

Salad Maker - (1) 3.22 hr.

Security Guard - (1) 4.33 hr.

Social Worker - (1) 5.29 hr.

MGD Goss

Lathe Machine Operator -(1) 8.00 hr.

Mid Continent Bottlers

Driver, Sales Route - (1) 7.50 hr.

Mid Iowa Tools

Office Worker - (1) 2.90 hr.

Midland Forge

Drop Hammer Operator - (2) 6.20 hr.

Drop Hammer Operator - (1) 7.12 hr.

Order Processor - (1) 4.24 hr.

Secondary Machine Set-Up - (1) 5.53 hr.

Midwest Home Distributers

Truck Driver - (1) 5.16 hr.

Midwest Janitor

Janitor - (2) 2.90 hr.

Midwestern Paper Co.

Delivery Worker - (1) 3.25 hr.

Miller Automotive Service

Wrecker Driver - (4) 3.00 hr.

Mimm's

Dishwasher - (2) 2.75 hr.

Kitchen Helper - (1) 2.90 hr.

Money Shop

Manager - (1) 5.77 hr.

Montgomery Ward

Cashier - (1) 3.00 hr.

Catalog Salesperson - (1) 2.65 hr.

Repair Service Clerk - (1) 2.65 hr.

Sales Audit Person - (1) 3.00 hr.

Salesperson - (2) 2.90 hr.

Mr. Comfort

Gutter Installer - (2) 5.00 hr.

Insulation Installer - (2) 5.00 hr.

Sales Reipresenative - (2) 5.00 hr.

Siding Applicator - (1) 5.00 hr.

Mt. Mercy College

Coordinator of Printing - (1) 3.50 hr.

Housekeeper - (1) 2.90 hr.

Multiple Sclerosis

Coordinator - (1) 4.33 hr.

Office Worker - (1) 3.00 hr.

Nash Finch

Warehouse Supervisor - (1) 6.50 hr.

National Oats

Laborer - (14) 6.20 hr.

Mailroom Clerk - (1) 2.93 hr.

Machine Operator - (1) 6.20 hr.

Material Handler - (2) 6.20 hr.

Production Helper - (1) 6.20 hr.

Secretary, Export - (1) 2.93 hr.

Nelson Manufacturing Co.

Machine Operator - (1) 5.00 hr.

Nesbitt Bottling Co.

Driver - (1) 5.00 hr.

Nesper Sign

Utility Sign Worker - (1) 4.40 hr.

New Harvest Seeds

Sales Reipresenative - (1) 6.25 hr.

New Horizons Care Center

Child Development
Worker - (4) 2.75 hr.

New Mires

Shoveler - (17) 5.90 hr.

New Process Laundry

Cashier - (2) 2.90 hr.
Family Marker - (2) 2.90 hr.
Janitor - (1) 2.90 hr.
Laundry Worker - (2) 2.90 hr.
Wash Person - (1) 2.90 hr.

Nissen Corp.

Credit Dept. Clerk - (1) 3.25 hr.
Drill Press Operator - (2) 5.73 hr.
General Clerk - (3) 3.25 hr.
Mechanical Drafter - (1) 4.00 hr.
Production Clerk - (1) 3.25 hr.
Regional Secretary - (1) 4.00 hr.
Supervisor - (3) 7.69 hr.
Wire Welder - (1) 5.95 hr.

Norland Corp.

Assembler - (1) 4.03 hr.
Electronics Assembler - (2) 4.03 hr.
Field Engineer - (1) 4.43 hr.
Material Handler - (1) 4.03 hr.
Service Operator - (1) 3.05 hr.

Norman Scott

Machinist - (1) 4.20 hr.

Northbrook Manor

Cook - (2) 3.30 hr.
Dishwasher - (3) 3.30 hr.
Orderly - (1) 3.00 hr.

Northtowne Apartment

Apartment Maintenance
Trainee - (2) 3.25 hr.

Northwest Computer

Data Control Clerk - (1) 3.75 hr.
Peripheral Operator - (1) 3.17 hr.

Northwestern Bell

Sales Representative - (1) 3.80 hr.
Service Representative - (1) 3.80 hr.
Toll Terminac Technician - (3) 4.36 hr.

Northwest Fabrics

Janitor - (1) 2.90 hr.
Salesperson - (4) 2.90 hr.

Northwood Knolls DX

Mechanic - (2) 3.50 hr.

Oakhill Engineering

Assembler - (15) 2.90 hr.
Braiding Machine Operator - (2) 3.00 hr.
Supervisor - (1) 6.25 hr.

Ogden & Adams

Truck Driver - (2) 5.06 hr.

Old Ironside

Bus Person - (1) 2.65 hr.
Fry Cook - (1) 2.65 hr.

Original Rock Replicas

Plant Worker - (1) 3.75 hr.

Orkin

Bookkeeper - (1) 3.50 hr.

Sales Person - (1) 4.33 hr.

P & H

Flame Cutting Machine

Operator - (1) 6.28 hr.

Receptionist - (1) 3.40 hr.

Park Towne Apartments

Apartment Complex

Maintenance Worker - (2) 3.00 hr.

Patterson, Dr. Donald

Office Worker - (1) 3.75 hr.

Paul Harris

Stock Clerk - (3) 2.90 hr.

Paul Norris

Laborer - (1) 3.00 hr.

Penick & Ford

Assistant Plant Mgr. - (1) 10.39 hr.

Penny Co.

Salesperson - (30) 2.65 hr.

Penny Saver

Paste Up Worker - (2) 2.90 hr.

Sales Advertising - (2) 3.75 hr.

Sales Advertising - (1) 4.38 hr.

Peoples Bank

Custodian - (1) 5.05 hr.

Office Worker - (1) 3.38 hr.

Perkins

Night Manager - (1) 2.65 hr.

Pester Derby

Manager - (1) 7.50 hr.

Petroleum Service & Equipment

Construction Worker - (1) 4.00 hr.

Service Worker - (1) 4.00 hr.

Phares J W Co.

Warehouse Worker - (1) 3.00 hr.

Pickwick Club

Waiter- Waitress - (1) 2.90 hr.

Pickwick Co.

Estimator, Sales - (1) 6.78 hr.

Sheet Metal Worker - (1) 5.00 hr.

Pidgeons

Furniture Mover - (2) 3.00 hr.

Laborer - (6) 3.00 hr.

Pierson Florist

Truck Driver - (10) 2.65 hr.

Pine Inn

Dishwasher - (1) 2.65 hr.

Pittsburgh Paints

Inside Salesperson - (1) 4.90 hr.

Material Handler - (1) 3.12 hr.

Pizza Hut

Assistant Manager

Trainee - (1) 3.50 hr.

Food Server - (2) 2.65 hr.

Polycell Industries

Assembler - (1) 3.55 hr.

Laborer - (1) 3.25 hr.

Prince Albert Formal

Alternation Tailor - (1) 2.65 hr.

Professional Chemist

Warehouse Worker - (1) 3.50 hr.

Prudential Insurance Co.

Clerical Worker - (1) 2.65 hr.

Psychiatric Association

Accounting Clerk - (1) 4.50 hr.

Medical Typist - (1) 3.46 hr.

Quaker Oats

Electrician - (1) 7.75 hr.

Extruder Operator - (1) 6.20 hr.

Keypunch Operator - (1) 5.05 hr.

Porter - (1) 3.14 hr.

Weight Coordinator - (1) 5.75 hr.

Welder - (1) 7.95 hr.

Ramada Inn

Relief Auditor - (1) 3.50 hr.

Room Cleaner - (4) 2.90 hr.

Host- Hostess - (1) 3.00 hr.

Randalls Handyman

Truck Driver - (1) 5.00 hr.

Rapids Chevrolet

Auto Mechanic - (1) 3.50 hr.

Red Roof Inn

Room Cleaner - (7) 2.90 hr.

Reeder Radio & Tv

Technician - (1) 3.00 hr.

Refrigeration Equipment

Office Worker - (1) 3.75 hr.

Regis High School

Custodian (!) 3.00 hr.

Reliable Machine Shop

Bookkeeper - (1) 3.25 hr.
Punch Press Operator - (1) 4.25 hr.

Renu Battery

Laborer - (4) 3.00 hr.

Rescar Inc.

Welder - (1) 4.50 hr.

Richard Raymon

Laborer - (2) 4.00 hr.
Material Handler - (1) 4.00 hr.

Rinderknect Associates

Arch Drafter - (1) 7.21 hr.
Estimator - (1) 7.21 hr.
Office Worker - (1) 4.04 hr.

Road Maintenance Co.

Laborer - (2) 4.00 hr.

Robertson Tv

Tv Technician - (1) 4.00 hr.

Ron Miller - (1) 6.25 hr.

Rons Wrecker Service

Wrecker Driver - (2) 2.90 hr.

Roosevelt Royale

Asst. Housekeeper - (1) 3.50 hr.
Desk Clerk - (4) 3.00 hr.
Housekeeping Manager - (1) 4.04 hr.
Maintenance Trainee - (1) 3.50 hr.
Night Auditor - (1) 2.90 hr.
Room Cleaner - (1) 2.90 hr.

Roundhouse Paper

Laborer - (4) 3.00 hr.
Truck Driver - (1) 3.00 hr.

Roy Arp

Janitor - (1) 2.90 hr.

Saga Food Service

Lead Cook - (1) 4.50 hr.
Stock Person - (1) 3.00 hr.
Vending Machine Server - (1) 3.25 hr.

Sales Agency

Janitor - (1) 3.00 hr.

Salvation Army

Bell Ringer - (1) 2.90 hr.
Salesperson - (1) 2.65 hr.

Sambo's

Kitchen Helper - (1) 2.90 hr.

Sanfords

Camera Salesperson - (1) 2.90 hr.

Sani Clean

Janitor - (1) 3.00 hr.

Satellite Industries

Route Ser. Worker - (1) 4.50 hr.

Sears

Credit Contact Person - (1) 3.45 hr.

Securities Corporation

Secretary - (1) 4.18 hr.

Seiferts

Sales, Ladies App. - (1) 2.90 hr.

Selfridge Hiedt

Carpet Layer Helper - (2) 3.75 hr.

Service Master

Floor Cleaner - (4) 3.00 hr.

Janitor - (1) 3.00 hr.

Seven Eleven Food

Figure Clerk - (1) 3.60 hr.

Shakey's Pizza Parlor

Bartender - (1) 2.90 hr.

Food Service Worker - (2) 2.90 hr.

Sheraton

Bus Person - (1) 2.45 hr.

Building Maintenance - (1) 3.75 hr.

Cocktail Server - (2) 1.50 hr.

Desk Clerk - (2) 3.00 hr.

Night Auditor - (1) 2.90 hr.

Salad Maker - (1) 2.90 hr.

Snow Shoveler - (4) 3.50 hr.

Waiter - Waitress - (3) 1.60 hr.

Sherwin Williams

Warehouse Worker - (1) 2.90 hr.

Shive- Hattery

Accounting Clerk - (1) 3.50 hr.

Simmons Skelly Service

Drive Attendant - (1) 2.50 hr.

Mechanic - (1) 3.00 hr.

Sinclair

Station Attendant - (1) 2.65 hr.

Site Service Station

Station Attendant - (1) 2.95 hr.

Skogman Realty

Accountant Staff - (1) 4.81 hr.

Smulekoffs

Laborer - (1) 3.75 hr.

Material Handlers - (2) 3.75 hr.

Warehouse Worker - (1) 2.73 hr.

Square D

Clerical Worker - (1) 3.75 hr.
Programmer - (1) 6.64 hr.
Receptionist - (1) 3.81 hr.
Scheduler - (1) 6.64 hr.

St. Patrick School

Janitor - (1) 4.50 hr.

Sta Fed

Adding Machine Operator - (4) 2.90 hr.
Janitor - (1) 3.50 hr.

Stamats Publishing Co.

Office Worker - (1) 3.00 hr.
Photo Typesetting Opr. - (1) 4.75 hr.

Stamy, John Insurance

Office Worker - (1) 3.50 hr.

Standard Body Fender

Laborer - (1) 3.00 hr.

Stepping Stones

Teachers Aide - (1) 2.90 hr.

Stouffers

Banquet Captain - (1) 4.38 hr.
Food Service Worker - (1) 2.90 hr.
Hotel Housekeeper - (2) 2.90 hr.
Maintenance Person - (1) 2.90 hr.
Night Auditor Trainee - (1) 3.75 hr.
Switchboard Operator - (1) 2.95 hr.

Stuber Body & Fender

Laborer - (2) 5.00 hr.

Suburban Lumber

Laborer - (1) 4.00 hr.
Truck Driver - (2) 5.60 hr.

Sun Oil Co.

Laborer - (1) 3.00 hr.

Supreme Auto Body

Auto Body Helper - (2) 2.65 hr.
Auto Body Repair - (1) 3.00 hr.

Sutherland Square

Snow Shoveler (2) 3.50 hr.

Swiss Valley Farms

Dairy Helper (1)
Laborer - (1) 6.90 hr.
Loader - (1) 6.73 hr.

Taco Johns

Day Help - (1) 2.65 hr.
Night Supervisor - (1) 3.00 hr.

Target

Night Janitor - (1) 3.30 hr.

Thermal Co.

Warehouse Worker - (2) 4.00 hr.

Three Eagle Production
Bookkeeper - (1) 4.00 hr.
Secretarial Worker - (1) 2.75 hr.

Thorarc
Truck Driver - (3) 5.00 hr.

Times Camera Center
Sales Clerk - (1) 2.95 hr.

Torrance Electric
Lift Truck Mechanic - (1) 4.50 hr.

Trausch Baking Co.
Delivery Person - (1) 3.15 hr.
Route Salesperson - (2) 5.00 hr.

Triangle Bandag
Retread Tire Specialist - (2) 3.75 hr.

Triple E Mfg. Co.
Machinist - (1) 5.00 hr.

Tuff Kote Dinol
Rust Proofer - (2) 3.50 hr.

Turner Co.
Accounting Clerk - (1) 3.50 hr.
Clerk Typist - (1) 3.50 hr.
Export Admin. Clerk - (2) 3.50 hr.

U Hual Company
Dispatcher - (1) 2.90 hr.

United Cerebral Palsy
Program Coordinator II - (1) 3.61 hr.

United Parcel Service
Material Handler - (8) 6.79 hr.
Truck Washer - (1) 6.79 hr.

United State Bank
Messenger - (1) 3.00 hr.

Universal Engineering
Assembler - (2) 7.70 hr.
Engine Lathe Operator - (2) 7.73 hr.
General Laborer - (1) 7.46 hr.
Grinder - (2) 7.63 hr.
Janitor - (1) 7.46 hr.
Layout Helper - (1) 7.46 hr.
Machinist Trainee - (1) 7.73 hr.
Milling Machine
Operator - (1) 7.73 hr.
Office Worker - (1) 3.75 hr.
Painter - (1) 7.70 hr.
Pricing Clerk - (1) 3.50 hr.
Production Machine
Operator - (1) 7.83 hr.
Shear Operator - (1) 7.89 hr.
Turret Lathe Operator - (1) 7.73 hr.
Welder - (2) 7.83 hr.
Yard Helper - (2) 7.56 hr.

Van Dyke
Parts Worker - (2) 3.00 hr.

Van Meter

Laborer - (10) 3.00 hr.
Material Handler - (2) 3.00 hr.
Warehouse Worker - (1) 4.00 hr.

Vector Corp.

Machine Designer - (2) 6.73 hr.

Verhulst Agency

President Secretary
Trainee - (1) 3.25 hr.

Vernon Inn

Waiter - (1) 2.90 hr.

Vernon Heights Standard

Night Mechanic - (1) 4.00 hr.

Vigortone

Dock Worker - (1) 6.80 hr.
Printer Offset - (1) 4.00 hr.
Sales, Feed - (1) 5.50 hr.
Typist - (1) 3.25 hr.

Village Inn

Cook - (1) 2.65 hr.

Vincent Brass

Warehouse Worker - (1) 5.40 hr.

W.M.T.

Assistant Secretary - (1) 3.50 hr.
Technical Equipment
Operator - (2) 4.00 hr.
Tv Camera Operator - (1) 3.50 hr.
Tv Production Assistant - (1) 3.05 hr.
WeatherCaster - (1) 5.19 hr.

Wards Truck Center

Tire Mounter - (2) 3.50 hr.

Warren Feed Laboratories

Pharmaceutical Sales - (1) 6.25 hr.

Wayne's Excavating

Laborer - (1) 4.00 hr.

Welty Way

Assembler - (1) 3.50 hr.

Wenceslaus Grill

Bartender - (1) 3.00 hr.
Dishwasher - (2) 2.65 hr.
Dishwasher - (1) 3.00 hr.

Western Sizzlin' Steak

Waiter-Waitress - (2) 2.65 hr.

Western Stores

Salesperson - (2) 3.10 hr.

Zimmerman Ford

Body Shop Helper - (1) 3.00 hr.
Office Helper - (1) 3.75 hr.
Payroll Clerk - (1) 3.75 hr.

Zubers Sound Around

Salesperson - (1) 2.65 hr.

1st Ave. Development

Laborer - (2) 3.50 hr.

5 Seasons

Usher - (1) 3.25 hr.

7 Eleven

Accounting Clerk - (1) 3.60 hr.



3 1723 02115 6922

Weyerhaeuser

Branch Secretary - (1) 3.61 hr.
 Corrugator - (1) 5.57 hr.
 Corrugator Helper - (2) 5.54 hr.
 Corrugator Operator - (3) 5.57 hr.

Wholesale Sports

Assistant Manager - (1) 7.21 hr.
 Outboard Motor Mechanic
 Trainee - (1) 5.77 hr.

Wilson Foods

Accountant - (1) 5.00 hr.
 Accountant Clerk - (1) 4.09 hr.
 Guard - (1) 6.00 hr.
 Laborer - (8) 7.06 hr.
 Maint. Mech. Spvr. - (1) 6.73 hr.
 Messenger - (1) 3.00 hr.
 Quality Control Insp. - (1) 7.60 hr.
 R.N. - (1) 4.81 hr.
 Spicer Mixer - (1) 4.25 hr.
 Supervisor - (1) 6.30 hr.
 Supervisor Cured Meats - (2) 6.63 hr.

Wilson Truck Service

Mechanic Trainee - (1) 4.00 hr.

Wolverton Tree Care

Laborer - (1) 2.90 hr.
 Tree Trimmer - (1) 3.50 hr.

Woodward State Hospital

Receptionist - (1) 3.00 hr.

Woolworths

Inventory - (1) 2.90 hr.
 Salesperson - (7) 2.90 hr.

Wyerhaeuser

Office Worker - (1) 3.25 hr.

YMCA

Clerical Worker - (1) 3.15 hr.
 Main Desk Clerk - (1) 3.00 hr.

YWCA

Maintenance Worker - (1) 2.65 hr.

Yellow Cab Co.

Taxi Cab Driver - (2) 3.00 hr.

Younkers

Sales Women Apparel - (1) 2.90 hr.

Zachar Realtors

Receptionist - (1) 3.50 hr.

Ziebart Rust Proofing

Rust Proofer - (1) 3.25 hr.

Zila Josephine

Laborer - (1) 3.50 hr.