

Food Assistance Report Series F-1
(Revised Effective July 2016)
Report for March, 2018



Effective with the July 2016 Report.

Changes have been made to this report to provide more complete and accurate information about the households and individuals in Iowa receiving Food Assistance benefits through the federal Supplemental Nutrition Assistance Program (SNAP).

Categories for households have been renamed or added and the method used to assign households to categories changed to better reflect other types of assistance received from the Iowa Department of Human Services:

- * If one or more individuals receiving Food Assistance also receives FIP, the household is categorized as **FA/FIP**.

- * If no one receives FIP, but at least one individual also receives Medical Assistance, the household is categorized as **FA/Medical Assistance**.

- * If no one receives FIP or Medical Assistance, but at least one individual receives Healthy and Well Kids in Iowa or *hawk-i* benefits, the household is categorized as **FA/hawk-i**.

- * If no one receives FIP, Medical Assistance or *hawk-i*, the household is categorized as **FA Only**.

Categories for individuals have likewise been renamed or added. Using the same categories above, individuals are assigned based on their own circumstances. Previously, the household category was assigned to all members of the Food Assistance household, regardless of individual status. This change provides a more accurate individual count by category.

Finally, the timing for the report has changed. Previously produced at or near the end of the month, the report missed cases that were closed for any number of reasons when the report was created, only to shortly re-open. Now the report is produced mid-month after the report month. As a result, it may appear that caseloads have increased. Instead, the new report provides more complete and accurate counts by including cases missed by the old report.

Note that data for the corresponding month from the prior year was also categorized as described above allowing for an equivalent comparison to the current report month.

Food Assistance Report Series F-1
Report for March, 2018

Food Assistance Program - State Summary

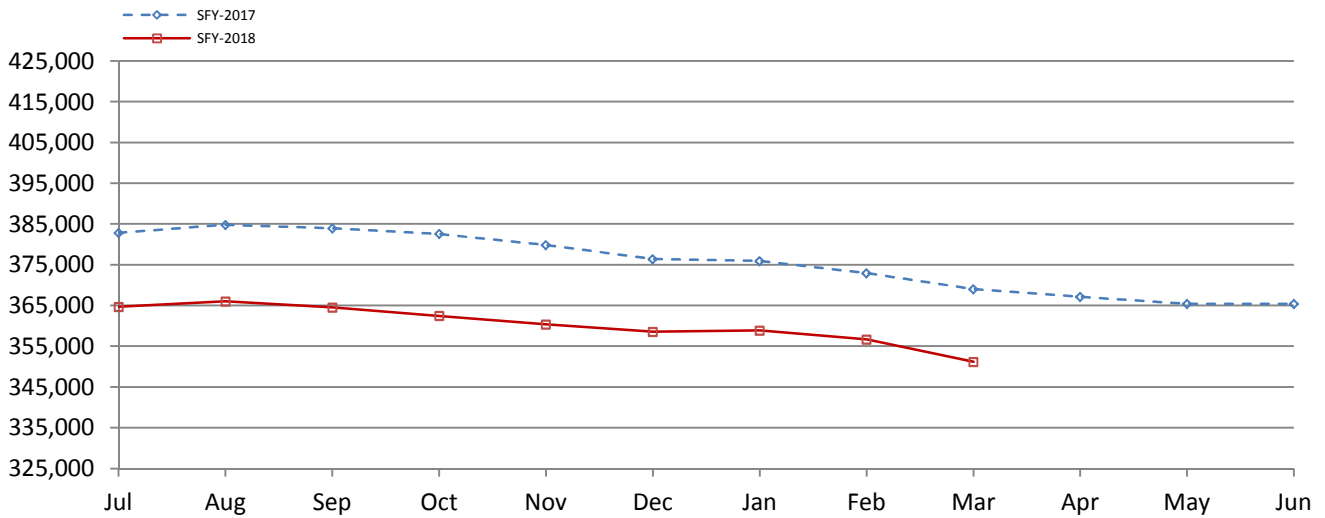
	<u>March, 2018</u>	<u>February, 2018</u>	<u>March, 2017</u>	<u>% of Change Over Last Year</u>
*Households				
FA/FIP	7,239	7,527	8,199	-11.7%
FA/Medical Assistance	141,524	143,234	146,529	-3.4%
FA/ <i>hawk-i</i>	752	732	573	31.2%
FA Only	18,522	19,776	19,279	-3.9%
Total Households	168,037	171,269	174,580	-3.7%
*Recipients				
FA/FIP	18,619	19,406	21,232	-12.3%
FA/Medical Assistance	286,773	289,359	298,441	-3.9%
FA/ <i>hawk-i</i>	2,493	2,418	2,090	19.3%
FA Only	43,320	45,524	47,237	-8.3%
Total Recipients	351,205	356,707	369,000	-4.8%
*Allotments				
FA/FIP	\$2,932,043	\$3,070,166	\$3,396,051	-13.7%
FA/Medical Assistance	\$31,205,127	\$31,596,580	\$33,329,713	-6.4%
FA/ <i>hawk-i</i>	\$176,685	\$175,686	\$130,106	35.8%
FA Only	\$2,919,518	\$3,173,911	\$3,079,624	-5.2%
Total Allotments	\$37,233,373	\$38,016,343	\$39,935,494	-6.8%
*Average Allotment per Household				
FA/FIP	\$405.03	\$407.89	\$414.20	-2.2%
FA/Medical Assistance	\$220.49	\$220.59	\$227.46	-3.1%
FA/ <i>hawk-i</i>	\$234.95	\$240.01	\$227.06	3.5%
FA Only	\$157.62	\$160.49	\$159.74	-1.3%
Overall Average per Household	\$221.58	\$221.97	\$228.75	-3.1%
*Average Allotment per Recipient				
FA/FIP	\$157.48	\$158.21	\$159.95	-1.5%
FA/Medical Assistance	\$108.81	\$109.20	\$111.68	-2.6%
FA/ <i>hawk-i</i>	\$70.87	\$72.66	\$62.25	13.8%
FA Only	\$67.39	\$69.72	\$65.20	3.4%
Overall Average per Recipient	\$106.02	\$106.58	\$108.23	-2.0%

State Fiscal Year to Date

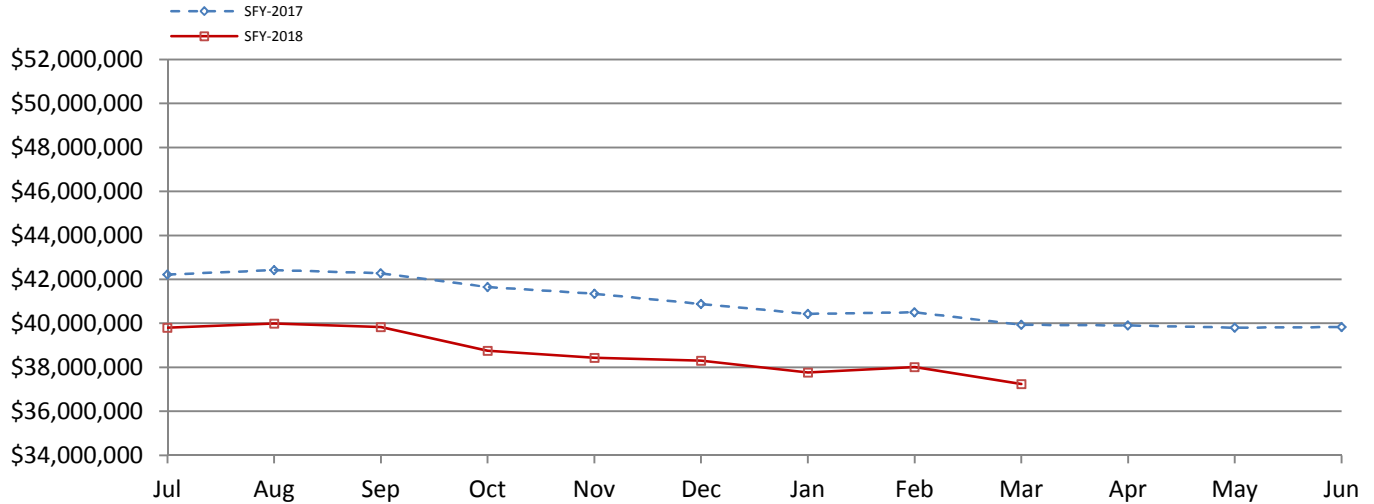
*Allotment	SFY 2018	SFY 2017	% of Change over Last Year
FA/FIP	\$28,772,429	\$32,932,652	-12.63%
FA/Medical Assistance	\$288,512,302	\$306,927,697	-6.00%
FA/ <i>hawk-i</i>	\$1,422,752	\$1,236,716	15.04%
FA Only	\$29,435,893	\$30,531,145	-3.59%
Total Allotment	\$348,143,376	\$371,628,210	-6.32%

Food Assistance Report Series F-1
Report for March, 2018

Total Food Assistance Recipients



Total Food Assistance Benefits



Food Assistance Report Series F-1
Report for March, 2018

Food Assistance Participation by Case Type and County

County	FA/FIP			FA/Medical Assistance			FA/hawk-i			FA Only			Total			Participation Rate*
	Households	Recipients	Allotment	Households	Recipients	Allotment	Households	Recipients	Allotment	Households	Recipients	Allotment	Households	Recipients	Allotment	
Area 0 - DHS																
DHS	0	0	\$0	7	17	\$2,336	0	0	\$0	1	2	\$15	8	19	\$2,351	0.0%
Area Total	0	0	\$0	7	17	\$2,336	0	0	\$0	1	2	\$15	8	19	\$2,351	

Food Assistance Participation by Case Type and County

County	FA/FIP			FA/Medical Assistance			FA/hawk-i			FA Only			Total			Participation Rate*
	Households	Recipients	Allotment	Households	Recipients	Allotment	Households	Recipients	Allotment	Households	Recipients	Allotment	Households	Recipients	Allotment	
Area 1 - Western																
Audubon	8	16	\$2,538	194	413	\$45,430	1	5	\$640	39	87	\$4,517	242	521	\$53,125	42.1%
Buena Vista	36	107	\$15,640	782	1,833	\$176,642	3	24	\$871	85	266	\$13,851	906	2,230	\$207,004	42.0%
Carroll	33	96	\$14,425	662	1,377	\$137,822	7	21	\$1,186	82	220	\$13,230	784	1,714	\$166,663	43.0%
Cass	26	66	\$10,817	692	1,409	\$136,098	3	18	\$392	79	192	\$10,311	800	1,685	\$157,618	45.1%
Cherokee	15	42	\$5,772	376	726	\$74,131	0	0	\$0	36	105	\$6,346	427	873	\$86,249	33.9%
Clay	21	53	\$8,597	698	1,415	\$134,735	5	18	\$1,308	101	221	\$15,111	825	1,707	\$159,751	45.1%
Crawford	65	170	\$26,183	644	1,508	\$153,065	3	15	\$470	86	232	\$12,900	798	1,925	\$192,618	35.3%
Dickinson	12	24	\$3,743	542	1,020	\$104,557	3	9	\$877	58	148	\$7,064	615	1,201	\$116,241	47.5%
Emmet	25	66	\$11,014	390	819	\$80,749	0	0	\$0	64	124	\$9,248	479	1,009	\$101,011	41.2%
Fremont	16	33	\$5,291	338	746	\$73,319	0	0	\$0	38	111	\$5,926	392	890	\$84,536	56.6%
Greene	18	39	\$7,206	432	961	\$94,278	3	11	\$691	48	132	\$8,036	501	1,143	\$110,211	48.7%
Guthrie	14	31	\$5,067	356	777	\$81,424	3	12	\$132	61	144	\$6,897	434	964	\$93,520	39.0%
Harrison	23	48	\$8,730	629	1,256	\$132,594	5	25	\$1,034	64	181	\$8,592	721	1,510	\$150,950	48.9%
Ida	5	12	\$1,965	231	467	\$48,628	0	0	\$0	26	59	\$2,419	262	538	\$53,012	31.8%
Kossuth	13	31	\$3,920	433	861	\$93,044	3	12	\$701	58	146	\$9,391	507	1,050	\$107,056	34.3%
Lyon	15	40	\$5,731	194	456	\$40,955	1	3	\$246	24	84	\$2,121	234	583	\$49,053	34.4%
Mills	25	57	\$9,256	518	1,138	\$130,135	4	12	\$928	59	193	\$10,991	606	1,400	\$151,310	47.9%
Monona	15	46	\$6,345	413	884	\$81,318	0	0	\$0	49	103	\$6,620	477	1,033	\$94,283	39.8%
Montgomery	35	94	\$14,250	677	1,377	\$146,715	3	9	\$482	78	185	\$12,047	793	1,665	\$173,494	51.4%
O'Brien	18	44	\$8,037	415	877	\$85,661	3	10	\$1,129	54	149	\$7,575	490	1,080	\$102,402	39.1%
Osceola	7	23	\$3,876	168	359	\$34,479	1	8	\$563	27	56	\$2,981	203	446	\$41,899	35.4%
Page	38	96	\$15,628	788	1,618	\$164,990	1	11	\$115	83	228	\$12,663	910	1,953	\$193,396	45.4%
Palo Alto	15	29	\$4,708	328	678	\$64,641	4	15	\$702	33	113	\$4,620	380	835	\$74,671	38.4%
Plymouth	16	46	\$7,044	580	1,310	\$135,411	4	18	\$1,194	73	186	\$10,357	673	1,560	\$154,006	36.2%
Pottawattamie	302	771	\$120,614	6,256	12,192	\$1,318,509	20	53	\$5,522	883	1,895	\$136,605	7,461	14,911	\$1,581,250	72.6%
Sac	7	9	\$1,747	294	650	\$62,262	1	11	\$167	44	107	\$4,781	346	777	\$68,957	40.6%
Shelby	10	23	\$3,934	403	855	\$83,142	2	10	\$117	47	124	\$6,181	462	1,012	\$93,374	38.0%
Sioux	10	15	\$2,645	505	1,160	\$120,995	7	24	\$1,246	56	164	\$7,459	578	1,363	\$132,345	22.8%
Taylor	7	16	\$2,287	263	541	\$55,881	2	4	\$529	35	93	\$6,911	307	654	\$65,608	36.8%
Woodbury	380	1,014	\$157,057	6,182	13,234	\$1,447,300	29	113	\$8,170	769	1,900	\$131,228	7,360	16,261	\$1,743,755	56.3%
Area Total	1,230	3,157	\$494,067	25,383	52,917	\$5,538,910	121	471	\$29,412	3,239	7,948	\$496,979	29,973	64,493	\$6,559,368	48.8%

Food Assistance Report Series F-1
Report for March, 2018

Food Assistance Participation by Case Type and County

County	FA/FIP			FA/Medical Assistance			FA/hawk-i			FA Only			Total			Participation Rate*
	Households	Recipients	Allotment	Households	Recipients	Allotment	Households	Recipients	Allotment	Households	Recipients	Allotment	Households	Recipients	Allotment	
Area 2 - Northern																
Allamakee	46	115	\$18,245	459	1,114	\$109,716	7	12	\$1,124	61	170	\$9,964	573	1,411	\$139,049	41.5%
Black Hawk	558	1,420	\$215,803	7,453	14,130	\$1,512,455	42	109	\$8,827	1,023	2,285	\$156,041	9,076	17,944	\$1,893,126	51.0%
Bremer	24	59	\$9,939	484	982	\$102,297	4	13	\$634	71	178	\$9,405	583	1,232	\$122,275	34.0%
Buchanan	33	78	\$12,078	659	1,277	\$124,591	6	20	\$1,878	60	182	\$9,910	758	1,557	\$148,457	41.2%
Butler	23	59	\$9,322	453	968	\$93,941	4	17	\$589	55	157	\$6,463	535	1,201	\$110,315	46.0%
Calhoun	11	26	\$3,524	332	726	\$72,409	0	0	\$0	38	120	\$3,965	381	872	\$79,898	34.3%
Cerro Gordo	93	252	\$41,216	2,271	4,150	\$427,842	11	40	\$1,750	300	617	\$41,071	2,675	5,059	\$511,879	48.4%
Chickasaw	10	28	\$4,427	297	630	\$60,444	1	6	\$760	55	143	\$9,413	363	807	\$75,044	27.3%
Clayton	13	28	\$3,878	483	954	\$86,831	0	0	\$0	70	156	\$8,252	566	1,138	\$98,961	27.5%
Delaware	24	77	\$11,424	476	943	\$93,453	0	0	\$0	44	124	\$6,771	544	1,144	\$111,648	28.1%
Fayette	47	114	\$18,397	986	1,974	\$190,105	6	17	\$1,888	122	345	\$17,051	1,161	2,450	\$227,441	48.2%
Floyd	50	137	\$20,113	730	1,509	\$151,776	2	15	\$859	91	236	\$14,615	873	1,897	\$187,363	43.2%
Franklin	21	64	\$9,690	370	791	\$77,958	5	12	\$678	35	117	\$5,764	431	984	\$94,090	37.5%
Grundy	12	37	\$5,874	249	513	\$52,156	2	8	\$227	24	80	\$3,822	287	638	\$62,079	32.4%
Hamilton	25	66	\$10,903	502	999	\$104,426	2	8	\$760	57	137	\$8,564	586	1,210	\$124,653	34.3%
Hancock	23	58	\$8,580	280	611	\$59,656	1	5	\$568	28	86	\$4,570	332	760	\$73,374	35.8%
Hardin	22	56	\$8,485	688	1,513	\$142,414	6	19	\$2,114	83	233	\$10,550	799	1,821	\$163,563	51.1%
Howard	13	38	\$5,087	245	468	\$45,516	3	11	\$761	40	88	\$5,758	301	605	\$57,122	25.2%
Humboldt	13	31	\$4,718	304	614	\$62,001	2	10	\$562	34	100	\$6,378	353	755	\$73,659	29.2%
Marshall	104	276	\$41,009	2,039	4,412	\$458,498	13	47	\$1,748	256	740	\$41,914	2,412	5,475	\$543,169	56.4%
Mitchell	13	29	\$4,663	257	523	\$54,222	0	0	\$0	33	90	\$5,877	303	642	\$64,762	28.6%
Pocahontas	8	24	\$3,011	291	693	\$65,496	4	16	\$1,797	36	97	\$5,387	339	830	\$75,691	43.1%
Webster	162	390	\$61,324	2,494	4,769	\$520,915	11	36	\$2,919	267	607	\$37,833	2,934	5,802	\$622,991	60.7%
Winnebago	15	34	\$5,566	335	717	\$76,801	1	4	\$312	44	104	\$7,182	395	859	\$89,861	38.0%
Winneshiek	14	32	\$4,290	393	770	\$72,882	4	12	\$1,477	50	127	\$5,728	461	941	\$84,377	30.7%
Worth	10	35	\$5,007	189	419	\$38,332	2	4	\$205	31	86	\$4,848	232	544	\$48,392	31.2%
Wright	42	103	\$15,497	594	1,335	\$147,476	2	7	\$245	56	161	\$9,334	694	1,606	\$172,552	52.6%
Area Total	1,429	3,666	\$562,070	24,313	48,504	\$5,004,609	141	448	\$32,682	3,064	7,566	\$456,430	28,947	60,184	\$6,055,791	44.7%

Food Assistance Report Series F-1
Report for March, 2018

Food Assistance Participation by Case Type and County

County	FA/FIP			FA/Medical Assistance			FA/hawk-i			FA Only			Total			Participation Rate*
	Households	Recipients	Allotment	Households	Recipients	Allotment	Households	Recipients	Allotment	Households	Recipients	Allotment	Households	Recipients	Allotment	
Area 3 - Eastern																
Cedar	11	26	\$3,955	418	903	\$95,009	1	6	\$489	41	135	\$6,163	471	1,070	\$105,616	34.6%
Clinton	159	373	\$62,917	3,143	6,044	\$669,829	9	41	\$2,727	321	729	\$48,532	3,632	7,187	\$784,005	61.3%
Des Moines	181	442	\$70,917	2,855	5,705	\$640,731	10	29	\$3,578	346	837	\$57,594	3,392	7,013	\$772,820	61.6%
Dubuque	245	645	\$99,871	3,884	7,872	\$863,601	21	83	\$4,936	535	1,162	\$85,945	4,685	9,762	\$1,054,353	50.8%
Henry	51	144	\$22,622	939	1,982	\$205,262	7	17	\$1,124	78	248	\$12,041	1,075	2,391	\$241,049	47.6%
Jackson	46	114	\$18,725	844	1,751	\$174,534	2	6	\$53	83	217	\$11,737	975	2,088	\$205,049	43.8%
Lee	130	318	\$50,005	2,379	4,877	\$528,375	6	12	\$1,086	248	635	\$42,761	2,763	5,842	\$622,227	59.0%
Louisa	21	50	\$8,654	369	776	\$79,925	4	9	\$627	40	110	\$6,739	434	945	\$95,945	35.4%
Muscatine	109	288	\$45,810	2,452	4,982	\$553,058	11	37	\$1,442	234	665	\$39,633	2,806	5,972	\$639,943	59.2%
Scott	625	1,536	\$245,954	10,761	21,520	\$2,506,165	29	80	\$7,055	1,566	3,300	\$268,315	12,981	26,436	\$3,027,489	72.7%
Area Total	1,578	3,936	\$629,430	28,044	56,412	\$6,316,489	100	320	\$23,117	3,492	8,038	\$579,460	33,214	68,706	\$7,548,496	60.2%

Food Assistance Participation by Case Type and County

County	FA/FIP			FA/Medical Assistance			FA/hawk-i			FA Only			Total			Participation Rate*
	Households	Recipients	Allotment	Households	Recipients	Allotment	Households	Recipients	Allotment	Households	Recipients	Allotment	Households	Recipients	Allotment	
Area 4 - Cedar Rapids																
Appanoose	36	99	\$15,861	840	1,520	\$156,134	5	9	\$1,240	94	200	\$13,998	975	1,828	\$187,233	51.7%
Benton	26	64	\$9,067	803	1,593	\$174,667	5	18	\$1,078	103	225	\$12,666	937	1,900	\$197,478	43.3%
Davis	6	17	\$2,868	246	508	\$54,615	0	0	\$0	26	81	\$4,797	278	606	\$62,280	21.0%
Iowa	8	20	\$3,137	366	755	\$77,166	3	6	\$666	41	119	\$6,761	418	900	\$87,730	30.9%
Jasper	65	135	\$23,799	1,669	3,317	\$354,358	8	21	\$1,792	215	484	\$33,077	1,957	3,957	\$413,026	55.1%
Jefferson	33	82	\$12,424	947	1,653	\$175,504	2	14	\$287	114	234	\$16,446	1,096	1,983	\$204,661	43.7%
Johnson	239	689	\$105,733	4,173	8,603	\$954,620	24	73	\$4,989	558	1,183	\$85,018	4,994	10,548	\$1,150,360	30.5%
Jones	32	89	\$14,741	623	1,349	\$137,864	3	9	\$1,460	78	192	\$12,283	736	1,639	\$166,348	43.2%
Keokuk	19	55	\$8,534	417	897	\$90,611	1	3	\$398	40	122	\$5,265	477	1,077	\$104,808	39.9%
Linn	612	1,591	\$249,607	10,973	21,658	\$2,429,137	57	199	\$12,127	1,430	3,106	\$219,252	13,072	26,554	\$2,910,123	65.7%
Mahaska	49	121	\$18,748	1,090	2,060	\$224,934	7	24	\$1,756	191	405	\$29,134	1,337	2,610	\$274,572	44.4%
Monroe	24	62	\$9,414	307	644	\$63,431	0	0	\$0	42	108	\$4,841	373	814	\$77,686	38.0%
Poweshiek	13	28	\$3,846	551	1,123	\$118,739	1	2	\$37	80	176	\$14,217	645	1,329	\$136,839	36.9%
Tama	30	76	\$11,369	632	1,450	\$145,429	8	14	\$3,095	81	220	\$11,397	751	1,760	\$171,290	48.4%
Van Buren	15	34	\$5,479	312	624	\$62,501	2	5	\$490	29	79	\$3,452	358	742	\$71,922	38.1%
Wapello	165	395	\$62,173	2,600	4,899	\$537,446	5	31	\$649	283	649	\$44,835	3,053	5,974	\$645,103	53.1%
Washington	25	55	\$7,911	728	1,554	\$159,425	7	36	\$1,167	75	232	\$11,392	835	1,877	\$179,895	42.9%
Area Total	1,397	3,612	\$564,711	27,277	54,207	\$5,916,581	138	464	\$31,231	3,480	7,815	\$528,831	32,292	66,098	\$7,041,354	47.3%

Food Assistance Report Series F-1
Report for March, 2018

Food Assistance Participation by Case Type and County

County	FA/FIP			FA/Medical Assistance			FA/hawk-i			FA Only			Total			Participation Rate*
	Households	Recipients	Allotment	Households	Recipients	Allotment	Households	Recipients	Allotment	Households	Recipients	Allotment	Households	Recipients	Allotment	
Area 5 - Des Moines																
Adair	10	22	\$3,435	288	576	\$58,432	2	3	\$133	31	84	\$4,062	331	685	\$66,062	44.9%
Adams	5	11	\$1,660	143	307	\$28,979	2	3	\$148	24	55	\$3,081	174	376	\$33,868	48.5%
Boone	32	75	\$12,855	885	1,772	\$196,764	4	16	\$1,083	126	295	\$20,445	1,047	2,158	\$231,147	34.9%
Clarke	14	35	\$5,433	532	1,142	\$122,425	2	8	\$201	57	156	\$8,899	605	1,341	\$136,958	49.7%
Dallas	36	98	\$14,863	1,347	2,909	\$316,844	15	57	\$3,545	169	489	\$30,380	1,567	3,553	\$365,632	38.1%
Decatur	16	33	\$5,914	475	974	\$102,413	5	17	\$888	74	167	\$11,643	570	1,191	\$120,858	43.2%
Lucas	19	46	\$9,082	448	965	\$97,279	0	0	\$0	55	145	\$9,813	522	1,156	\$116,174	56.5%
Madison	13	43	\$5,749	411	869	\$93,203	2	6	\$586	53	157	\$8,462	479	1,075	\$108,000	37.2%
Marion	34	81	\$14,410	1,095	2,349	\$257,804	5	11	\$640	132	382	\$19,688	1,266	2,823	\$292,542	47.3%
Polk	1,250	3,388	\$538,375	26,413	53,980	\$6,183,296	185	531	\$46,531	3,799	8,382	\$625,433	31,647	66,281	\$7,393,635	66.8%
Ringgold	5	15	\$2,392	199	379	\$36,300	0	0	\$0	13	51	\$2,066	217	445	\$40,758	36.5%
Story	93	219	\$35,814	2,058	3,947	\$437,868	15	36	\$3,681	428	808	\$66,062	2,594	5,010	\$543,425	19.0%
Union	36	81	\$12,788	720	1,414	\$151,704	4	15	\$589	83	214	\$15,488	843	1,724	\$180,569	50.4%
Warren	34	82	\$14,924	1,215	2,567	\$279,553	7	23	\$1,359	173	492	\$28,400	1,429	3,164	\$324,236	43.4%
Wayne	12	26	\$4,071	292	607	\$63,338	4	12	\$859	30	78	\$3,881	338	723	\$72,149	42.6%
Area Total	1,609	4,255	\$681,765	36,521	74,757	\$8,426,202	252	738	\$60,243	5,247	11,955	\$857,803	43,629	91,705	\$10,026,013	52.9%
State Total	7,243	18,626	\$2,932,043	141,545	286,814	\$31,205,127	752	2,441	\$176,685	18,523	43,324	\$2,919,518	168,063	351,205	\$37,233,373	50.6%

* Participation Rate is the percentage of individuals at or below 160% FPL who are receiving Food Assistance in a given area (County/SA/State). It is calculated by dividing the number of Food Assistance Recipients in an area (County/SA/State) by the number of persons in that area at or below 160% of the Federal Poverty Level (as counted in the 2015 American Community Survey).