

Status of the

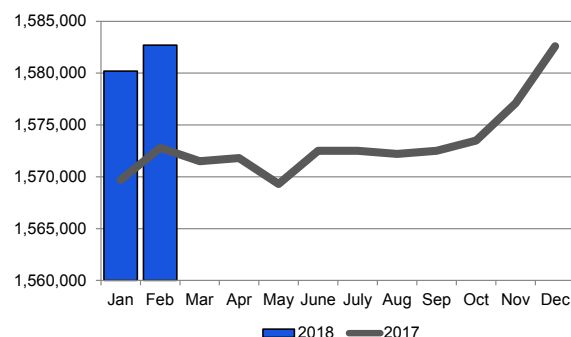
Iowa Workforce and Economy

Upcoming 2018 News Release Schedule

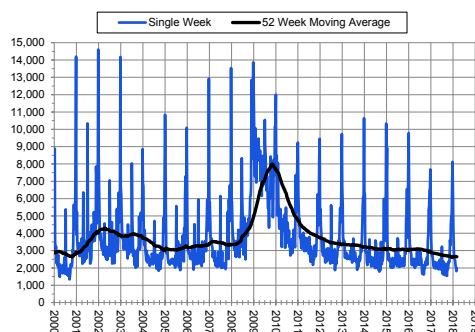
Reference Month	Statewide News Release	Local Area News Release
Jan	Mar 12	Mar 12
Feb	Mar 23	Mar 27
Mar	Apr 20	Apr 24
Apr	May 18	May 22
May	Jun 15	Jun 19
Jun	Jul 20	Jul 24
Jul	Aug 17	Aug 21
Aug	Sep 21	Sep 25
Sep	Oct 19	Oct 23
Oct	Nov 16	Nov 20
Nov	Dec 21	Dec 27
Dec	Jan 18	Jan 23

- Iowa's unemployment rate held steady at 2.9 percent in February. The state's jobless rate was 3.4 percent one year ago.
- The state's unemployment level dropped to 47,900 in February from 48,300 in January.
- The U.S. unemployment rate was 4.1 percent in February and has not changed since September of 2017.

Iowa Total Nonfarm Employment January 2017 - February 2018



Initial Claims for Unemployment Insurance



Source: Iowa Workforce Development

- Weekly UI initial claims averaged 2,648 for 52 weeks ending 3/3/2018. This represents a decrease of 200 claims from the same period in 2017.
- Wages for production workers in construction averaged \$864.83 in February. By contrast, production workers in manufacturing averaged \$823.75 per week.

- Total nonfarm gained 2,500 jobs in February following a loss in January. Private services was responsible for all of the job growth this month.
- Administrative support and waste management added the most jobs this month (+1,000). This was the first gain since November.
- Durable goods factories added 600 jobs in January, offsetting a slight loss in nondurable goods shops. Manufacturing has gained jobs in every month stretching back to last February.
- Annually, 9,900 jobs have been added since last February. Manufacturing continues to lead all sectors for growth (+10,400). Losses have been greatest in education services (-3,200) and retail (-3,100).

Iowa Nonfarm Employment by Quarter

		Average Employment	Percent Change from Prior Qtr
2016	Qtr 1	1,570,100	0.4%
	Qtr 2	1,569,100	-0.1%
	Qtr 3	1,573,900	0.3%
	Qtr 4	1,571,700	-0.1%
2017	Qtr 1	1,571,300	0.0%
	Qtr 2	1,571,200	0.0%
	Qtr 3	1,572,400	0.1%
	Qtr 4	1,577,700	0.3%

Iowa Workforce Development

Information Prepared by the Labor Market Information Division

1000 East Grand Avenue
Des Moines, Iowa 50319-0209

Phone: 515-242-5862
Fax: 515-281-8203

Donna Burkett, Bureau Chief
Iowa Workforce Development

- The Des Moines Metro had the highest average weekly wage of all Metropolitan areas in February with \$936.71 averaged per week. Iowa City had the lowest average weekly earnings at \$689.23.
- U.S. total nonfarm payroll advanced by 313,000 jobs in February. This was the largest gain since July 2016.

Iowa and U.S. Unemployment Rates for 2018

