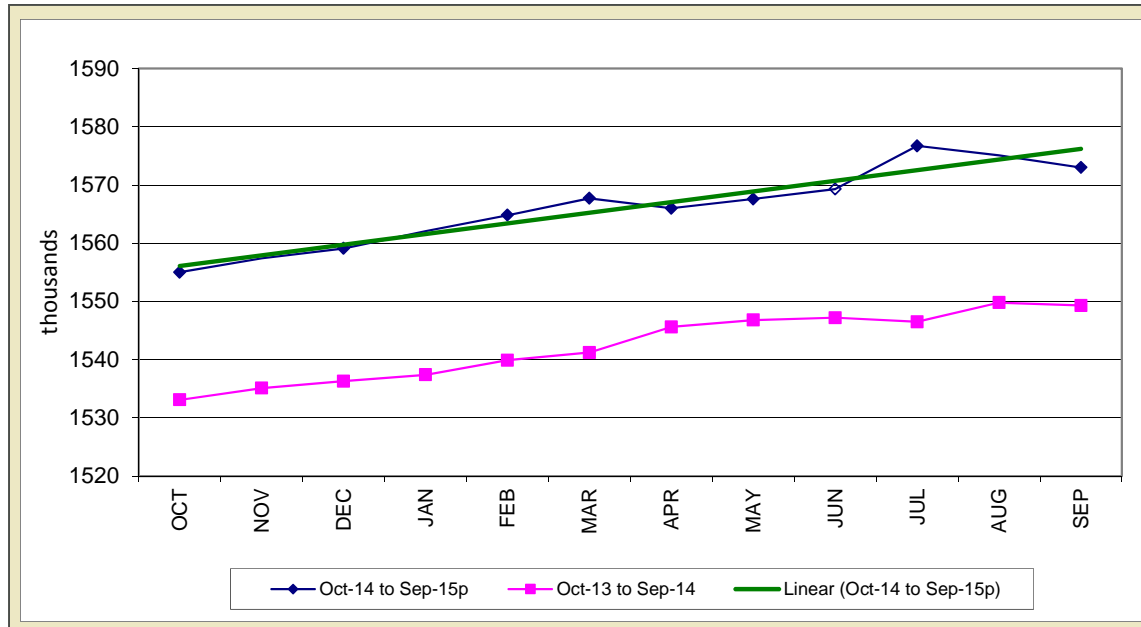


# STATE OF IOWA NONFARM EMPLOYMENT WORKFORCE DEVELOPMENT

SEPTEMBER 2015  
LMR MONTHLY

## SEASONAL FLUCTUATION INFLUENCES SECOND EMPLOYMENT DECLINE OF YEAR



Iowa's nonfarm employment decreased by 2,100 jobs in September and now rests at 1,573,000. This month's drop is the second consecutive loss for the state and fueled by a drop of 1,800 jobs in the private sector. Government was down a slight 300 jobs as seasonal summer employment losses were mitigated by early hiring at the state's universities. Overall, government has added 1,200 jobs annually due to state government education hiring, while private industries remain up 22,000 jobs despite recent losses.

Leisure and hospitality added the most jobs in September (+1,500) and was bolstered by growth in accommodations and food services (+500). These industries have steadily trended up since 2010. Education and health care services also added jobs this month (+600), as did professional and business services (+200). Job losses in

September were largest in manufacturing (-2,000) and split between durable and nondurable goods factories. This month's drop marks the second consecutive loss for durable goods manufacturing, while prior to this month, nondurable goods factories actually added jobs in eight of the last nine months and remain up 1,800 jobs annually. Construction pared seasonal employment early this year (-1,500), while trade and transportation shed jobs primarily in wholesale trade (-600).

Since last September, Iowa's total nonfarm is up 23,700 jobs (+1.5 percent). The largest gains have been in education and health services (+5,500) with both health care and private educational services advancing. Trade and transportation is second in terms of jobs growth (+4,700) thanks to hiring in both wholesale and retail trade. Construction has gained jobs (+4,600)

despite the early seasonal paring. The only sectors to trail last year's level are manufacturing (-1,300) and information services (-1,000).

Nationally, total nonfarm employment added 142,000 jobs in September. The increase was markedly lower than the prior twelve month average and follows a modest gain of 136,000 in August. The largest increases were in health care, professional and business services, and retail trade. The U.S.'s nonfarm growth rate annually is 0.5 percent higher than Iowa's rate (2.0 percent versus 1.5 percent).

*For additional information, contact James Morris (515-281-8515)*

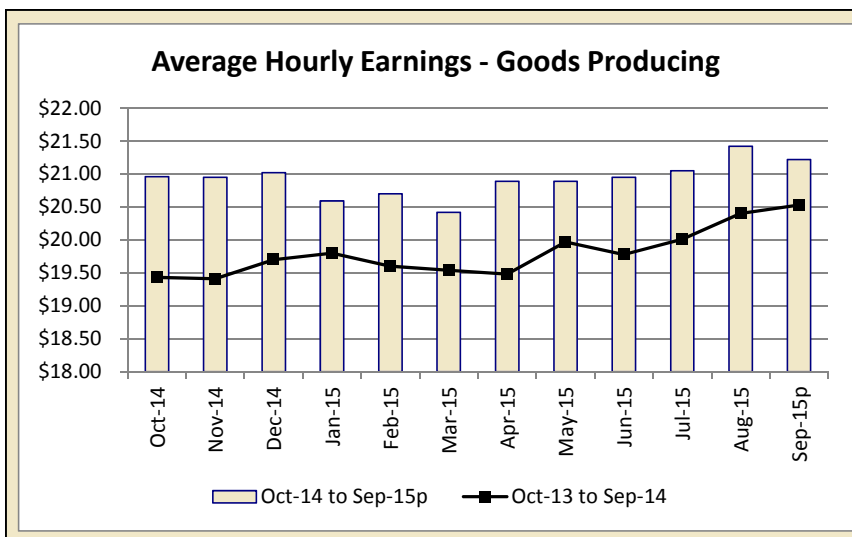
For additional information, contact James Morris (515-281-8515)

**METROPOLITAN STATISTICAL AREA  
SEASONALLY ADJUSTED NONFARM EMPLOYMENT (TOTAL NONFARM)**

MSA	Sep-14	Oct-14	Nov-14	Dec-14	Jan-15	Feb-15	Mar-15	Apr-15	May-15	Jun-15	Jul-15	Aug-15	Sep-15p
AMES	52.3	52.3	52.9	52.8	52.7	53.0	53.4	52.8	52.9	51.9	52.4	52.2	52.6
CEDAR RAPIDS	141.9	141.1	140.6	140.5	141.1	141.3	140.7	141.2	141.7	141.3	141.1	142.2	141.4
DES MOINES/W. DES MOINES	344.3	345.2	346.0	347.1	348.0	348.2	348.5	348.5	350.4	351.5	352.4	354.5	356.8
DUBUQUE	59.0	59.5	59.8	59.8	60.1	59.9	60.3	60.2	60.2	59.1	60.2	60.2	59.7
IOWA CITY	97.6	98.0	98.0	98.0	99.3	98.9	98.3	98.6	96.5	99.6	101.7	101.4	99.1
SIOUX CITY *													
WATERLOO/CEDAR FALLS	92.3	92.1	92.2	92.2	93.9	93.1	92.6	92.3	92.2	91.5	92.4	91.6	91.5

\* Seasonally adjusted data for the Sioux City MSA is not available due to redefinition of the metropolitan area to now include Plymouth County

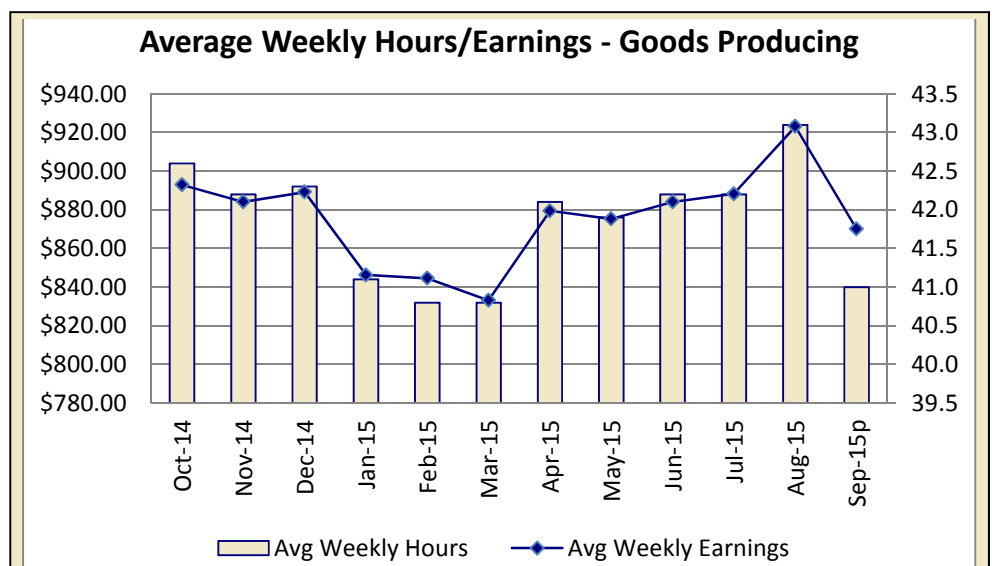
**IOWA'S HOURS & EARNINGS**



Goods-producing Hours & Earnings	
Average Weekly Earnings	\$870.02
Average Hourly Earnings	\$21.22
Average Weekly Hours	41.0

Production workers in Iowa's goods-producing sectors averaged \$870.02 in September, down \$53.18 compared to last month and up \$4.40 versus one year ago. The primary reason for the drop this month was the seasonal paring of hours worked in the construction sector. Construction workers still averaged \$30.15 more than one year ago in weekly pay, while manufacturing workers have shed \$9.23 versus last September.

Retail production workers averaged \$365.82 in September, down \$4.39 versus last month, but up \$18.16 since last year. Finance workers saw little change versus last month and averaged \$888.87 a week in September, up \$30.07 annually.



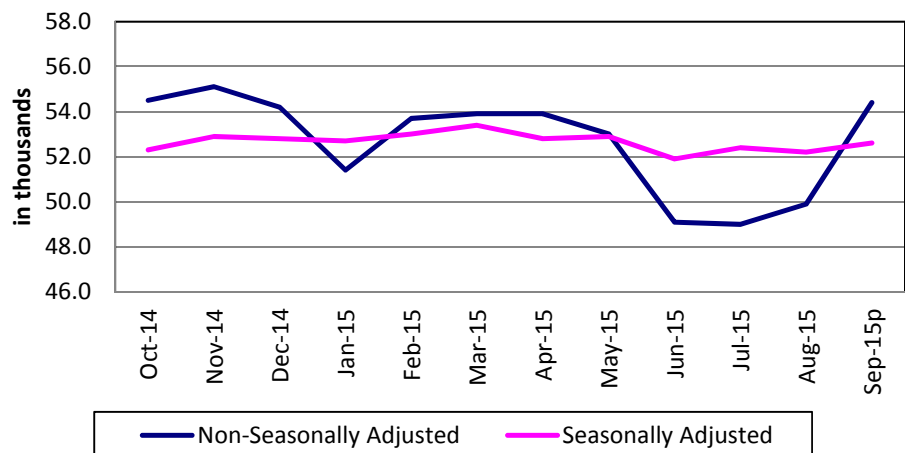
METROPOLITAN STATISTICAL AREAS

[CLICK TABLE FOR DATA](#)

Ames MSA Employment	
Total Nonfarm 15p	54,400
Total Nonfarm 14	53,900
% Change 1 Yr	0.93%
Noteworthy Expanding and Contracting Industries (1 yr)	
Pvt Service Provide	2.49%
Goods Producing	-5.48%

p - preliminary data

Ames - Nonfarm Employment



The Ames Metro area gained 4,500 jobs in September, lifting nonfarm employment to 54,400 jobs. Growth this month was heavily seasonal and the result of state government education resuming following the summer hiatus. To that end, government added 4,500 jobs. Goods producing and private service industries essentially cancelled each other out (-200 and +200, respectively).

Annually, Ames is up 500 jobs. State government education fueled a gain of 300 in government. Private services have added 600 jobs, and goods producing industries have combined for a loss of 400 jobs.

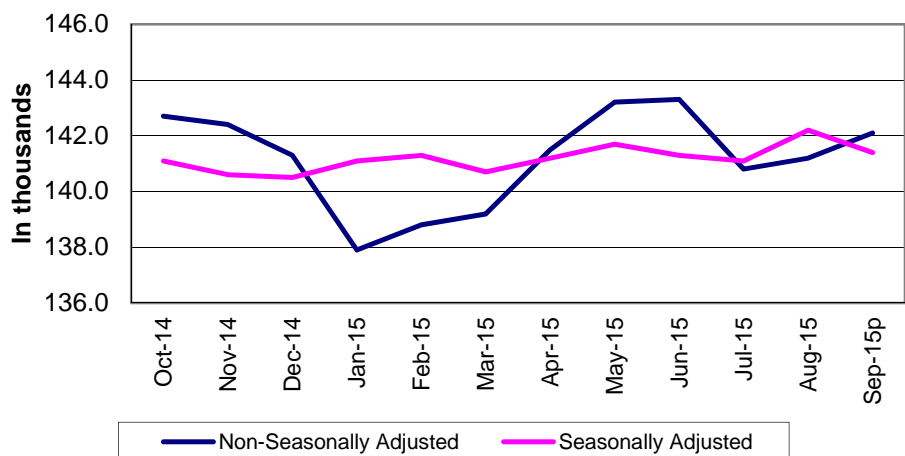
For additional information, contact James Morris (515-281-8515)

[CLICK TABLE FOR DATA](#)

Cedar Rapids MSA Employment	
Total Nonfarm 15p	142,100
Total Nonfarm 14	142,100
% Change 1 Yr	0.00%
Noteworthy Expanding and Contracting Industries (1 yr)	
Financial Activities	2.83%
Information	-4.26%

p - preliminary data

Cedar Rapids - Nonfarm Employment



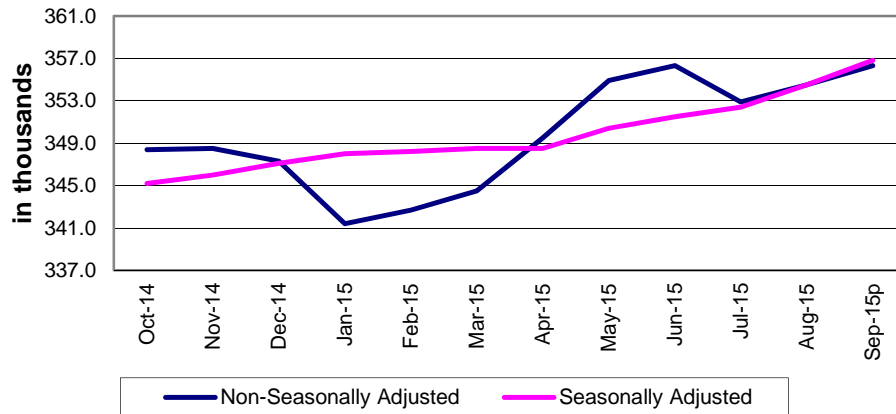
The Cedar Rapids metropolitan statistical area added 900 nonfarm jobs from August, bringing employment to 142,100. Local government led all industries, adding 1,400 jobs as a result of seasonal gains in education. Educational and health services, also boosted by seasonal increases, added 400 jobs. State government was the only other industry with a jobs gain, with 100 additional jobs.

Leisure and hospitality experienced a seasonal decline of 400 jobs and was followed closely by professional and business services which shed 300 jobs. Other industries with employment losses were trade, transportation and warehousing, manufacturing, and other services, each paring 100 jobs from last month.

Over the year, manufacturing has reduced employment by 600 jobs and professional and business services has shed 500 jobs. Several industries helped offset these losses but none as much as the gain of 400 jobs in trade, transportation and warehousing. Total nonfarm employment in the metro area is unchanged from one year ago.

For additional information, contact Dennis Schwartz (515-281-5754)

**Des Moines/West Des Moines -  
Nonfarm Employment**



[CLICK TABLE FOR DATA](#)

Des Moines MSA Employment	
Total Nonfarm 15p	356,300
Total Nonfarm 14	344,800
% Change 1 Yr	3.34%
Noteworthy Expanding and Contracting Industries (1 yr)	
Prof & Business	7.80%
Information	-4.55%

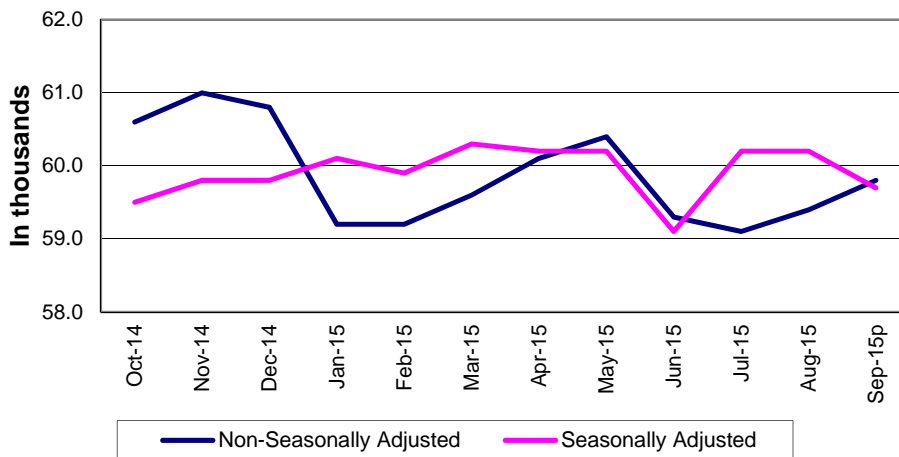
p - preliminary data

The Des Moines Metropolitan added 1,800 jobs in September, lifting nonfarm employment to 356,300 jobs. This month's gain is higher than average, but does follow an anemic seasonal gain last month partially due to seasonal education employment being added one month later this fall. Accordingly, government added 2,800 jobs in September. A majority of the jobs gained were in local government (+2,400), although state government increased also (+400). Education and health services also seasonally advanced this month (+1,100) although this increase was partially tempered by a contraction in health care. Losses this month were led by leisure and hospitality (-700) and fueled by seasonal layoffs in temporary summer employment. Trade and transportation experienced an unexpected loss this month (-600) followed closed by a loss in professional and business services (-500).

Annually, the Des Moines metro is up 11,500 jobs (+3.3 percent) and leads all Iowa metro areas by growth percentage. The professional and business services sector is responsible for much of the annual growth (+3,500). Financial services has also fared well over the last twelve months and continues to trend up (+2,400), as does leisure and hospitality (+2,300). Only information services trails last year's level (-300).

For additional information, contact James Morris (515-281-8515)

**Dubuque - Nonfarm Employment**



[CLICK TABLE FOR DATA](#)

Dubuque MSA Employment	
Total Nonfarm 15p	59,800
Total Nonfarm 14	59,300
% Change 1 Yr	0.67%
Noteworthy Expanding and Contracting Industries (1 yr)	
Local Government	9.30%
Pvt Service Provide	-0.94%

p - preliminary data

The Dubuque Metro area increased by 400 jobs in September and now rests at 59,800 jobs. The seasonal gain this month is small compared to the prior ten years but keeps the Dubuque area up 500 jobs annually. Government added 600 jobs this month due to seasonal gains in local government. Both goods producing and private service industries pared 100 jobs this month.

Compared to last year, goods producing industries have gained a healthy 500 jobs, more than offsetting a loss of 400 in private services. Government is up 400 jobs due to hiring in local government.

For additional information, contact James Morris (515-281-8515)

METROPOLITAN STATISTICAL AREAS

[CLICK TABLE FOR DATA](#)

Iowa City MSA Employment	
Total Nonfarm 15p	99,800
Total Nonfarm 14	98,700
% Change 1 Yr	1.11%
Noteworthy Expanding and Contracting Industries	
Goods Producing	4.90%
Federal Government	-5.00%

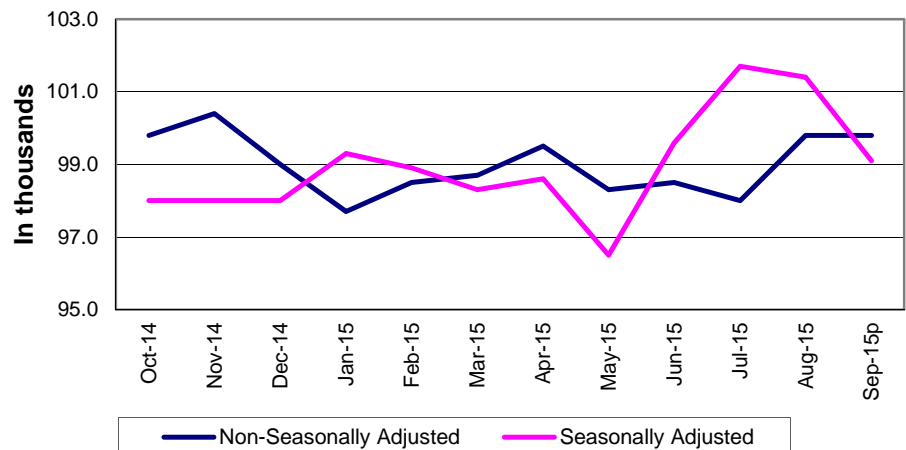
p - preliminary data

Nonfarm employment in the Iowa City metropolitan statistical area is unchanged from last month as a result of gains in government (+700) and losses in private service (-500) and goods producing (-200) sectors. Trade, transportation and warehousing pared 300 jobs, making the industry's employment level 200 below one year ago. Goods producing industries remain 500 above one year ago.

Gains from one year ago totaled 1,100 jobs and were fueled by nearly equal employment increases in service-providing industries (+600) and goods producing industries (+500).

For additional information, contact Dennis Schwartz (515-281-5754)

Iowa City - Nonfarm Employment



[CLICK TABLE FOR DATA](#)

Sioux City MSA Employment	
Total Nonfarm 15p	89,100
Total Nonfarm 14	88,300
% Change 1 Yr	0.91%
Noteworthy Expanding and Contracting Industries	
Leisure & Hospitality	5.81%
Local Government	-6.45%

p - preliminary data

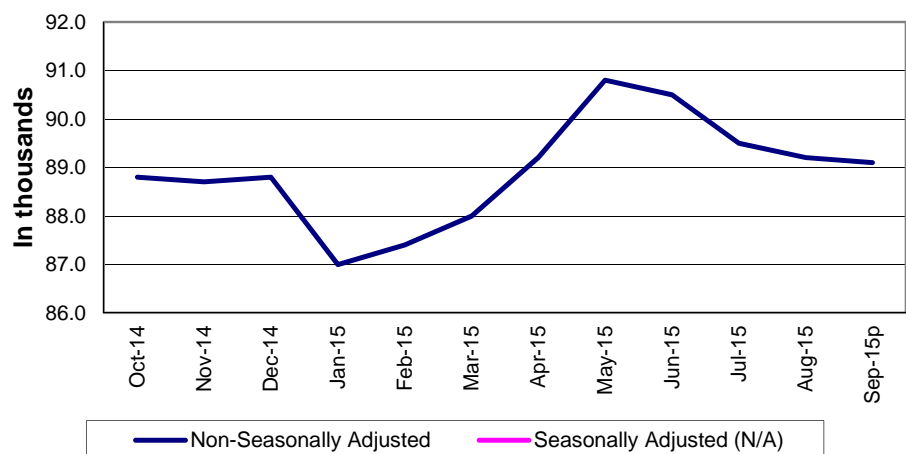
The Sioux City MSA has been redefined. It now includes: Dixon and Dakota Counties in Nebraska, Union County in South Dakota, and Woodbury and Plymouth Counties in Iowa.

Employment in the Sioux City MSA shed 100 jobs from August, making this the fourth consecutive month of employment losses. Gains in government employment (+800) were centered in local government and were seasonal in nature. A seasonal decline in leisure and hospitality (-600) as well as smaller losses in manufacturing, trade, transportation and warehousing, and professional and business services more than offset the gains in government.

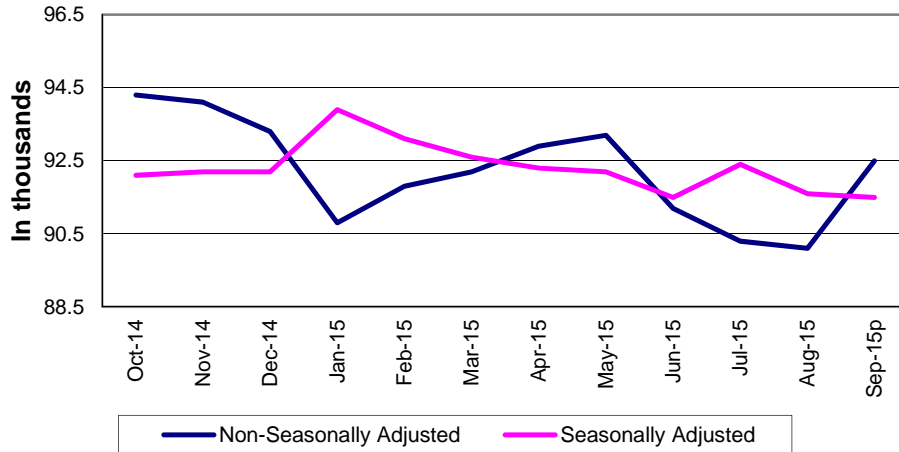
Overall, the area has added 800 jobs from one year ago. Leisure and hospitality has enjoyed the greatest employment gain, adding 500 jobs. Trade, transportation and warehousing added 400 jobs. Manufacturing and professional and business services have each shed 100 jobs.

For additional information, contact Dennis Schwartz (515-281-5754)

Sioux City - Nonfarm Employment



**Waterloo/Cedar Falls - Nonfarm Employment**



[CLICK TABLE FOR DATA](#)

<b>Waterloo/Cedar Falls MSA Employment</b>	
Total Nonfarm 15p	92,500
Total Nonfarm 14	93,200
% Change 1 Yr	-0.75%
Noteworthy Expanding and Contracting Industries	
Retail Trade	4.72%
Goods Producing	-6.51%

*p - preliminary data*

The Waterloo/Cedar Falls metropolitan statistical area's total nonfarm employment gained 2,400 jobs from the previous month. The gain is almost entirely contributed to seasonal job additions in education, with government adding 1,600 jobs and educational and health services gaining 700 jobs. Trade, transportation and warehousing is the only other industry with a jobs gain (+100). Manufacturing and leisure and hospitality each pared 200 jobs. Financial activities shed 100 jobs.

The over-the-year employment change is -700 with a mixture of gains and losses in various industries. Most notably, manufacturing pared 400 jobs and trade, transportation and warehousing trimmed 500 jobs. Government remains 300 below one year ago.

*For additional information, contact Dennis Schwartz (515-281-5754)*

**LINKS TO ADDITIONAL INFORMATION**

Click on a link below to visit web page

[Worker Adjustment & Retraining Notification Act \(WARN\)](#)

[U.S. Bureau of Labor Statistics](#)

[Unemployment Insurance Benefit Payments](#)

[Consumer Price Index \(CPI\)](#)

[Unemployment Insurance Benefit Paid by County](#)

[Employment Statistics for Canada](#)

**Current Employment Statistics**

Each month the **Current Employment Statistics** program surveys about 143,000 businesses and government agencies, representing approximately 588,000 individual worksites, in order to provide detailed industry data on employment, hours, and earnings of workers on nonfarm payrolls for all 50 States, the District of Columbia, Puerto Rico, the Virgin Islands, and about 450 metropolitan areas and divisions.

**Contact Information**

Iowa Workforce Development  
Employment Statistics Bureau  
1000 East Grand Avenue  
Des Moines, IA 50319-0209  
Tel: 515-281-8515  
Tel: 800-532-9793  
Fax: 515-281-8195  
Email: trends@iowa.gov  
www.iowaworkforce.org

*Equal opportunity employer/program. Auxiliary aids and services are available upon request to individuals with disabilities. For deaf and hard of hearing, use Relay 711*