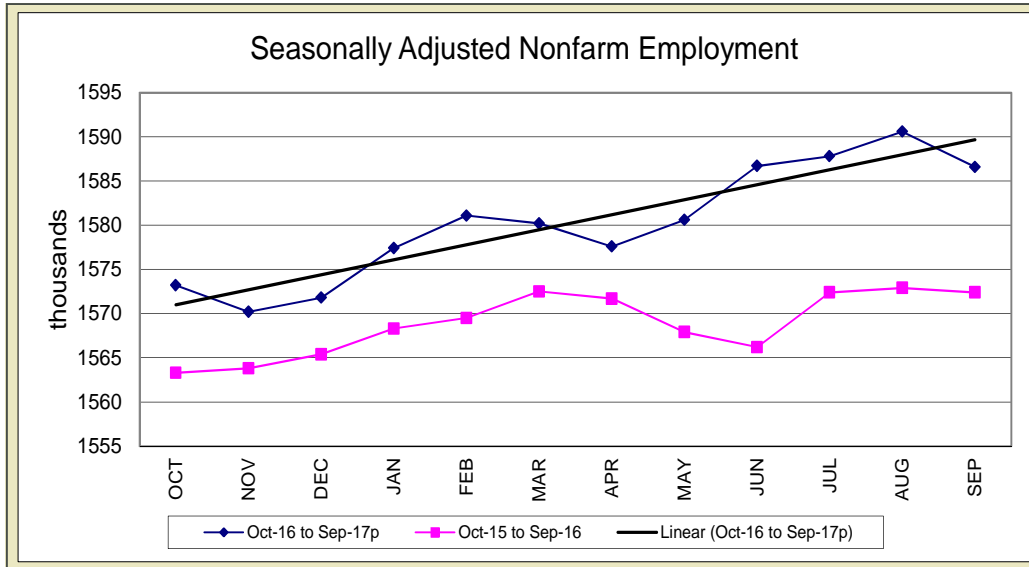


STATE OF IOWA NONFARM EMPLOYMENT WORKFORCE DEVELOPMENT

SEPTEMBER 2017
LMR MONTHLY

PRIVATE SERVICES MAJOR CONTRIBUTOR TO FIRST JOBS LOSS SINCE APRIL



Iowa establishments shed 4,000 jobs in September, lowering total nonfarm employment down to 1,586,600 jobs. This was the state's first loss since April and only the third decline this year. Private services were responsible for the majority of the losses this month (-3,300). Government pared 900 jobs, primarily within state government, and is now down 1,300 jobs versus last year. On the other hand, private industries have combined for 15,500 jobs added over the past twelve months.

Education and health services pared 4,500 jobs since August to lead all super sectors. Losses were nearly identical between healthcare and social assistance and educational services. This is the first time since last year that this combined super sector has shed jobs monthly. The loss is partially the result of weaker than expected seasonal hiring in

education. Professional and business services shed 1,500 jobs, marking the third loss in the last four months. The professional, scientific, and technical services sector has been responsible for the majority of the losses during that span. Other losses this month were smaller in nature and included trade and transportation (-500) and construction (-400). Conversely, Iowa businesses experienced strong hiring in accommodations and food services this month leading to a gain of 2,100 in leisure and hospitality. Financial activities also rebounded following an unexpected decline last month and added 1,200 jobs. The only other sector to add jobs this month was manufacturing (+600) which was mostly fueled by hiring in nondurable goods factories.

Since last September, no sector has fared better than education and healthcare services (+4,900). All of

the annual growth has been in healthcare and social assistance. The financial activities sector has also continued to trend upward and now stands 4,200 jobs above last year's mark. Leisure and hospitality has gained 4,000 jobs due entirely to strong hiring in accommodations and food services. Private sector losses have been limited to construction (-6,600) and information services (-1,600).

Nationally, total nonfarm employment shed 33,000 jobs in September. Much of the loss could be attributed to Hurricanes Irma and Harvey affecting the Southeastern parts of the U.S. this month. Those industries most affected were those in leisure and hospitality (-111,000). Most other sectors showed relatively small movement.

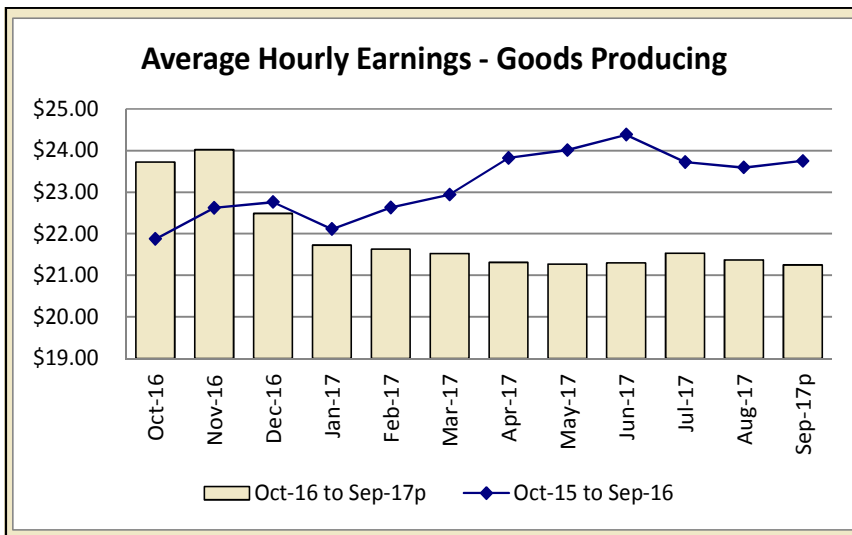
For additional information, contact James Morris (515-281-8515)

For additional information, contact James Morris (515-281-8515)

**METROPOLITAN STATISTICAL AREA
SEASONALLY ADJUSTED NONFARM EMPLOYMENT (TOTAL NONFARM)**

MSA	Sep-16	Oct-16	Nov-16	Dec-16	Jan-17	Feb-17	Mar-17	Apr-17	May-17	Jun-17	Jul-17	Aug-17	Sep-17p
AMES	52.7	52.6	52.7	52.8	53.8	53.9	53.6	53.7	53.1	53.4	53.4	54.3	53.7
CEDAR RAPIDS	143.9	143.6	143.5	144.1	144.8	144.3	144.8	144.3	143.6	144.4	144.0	145.2	144.9
DES MOINES/W. DES MOINES	358.9	359.1	360.9	361.6	361.9	363.2	362.1	365.1	364.2	370.3	371.2	369.8	366.2
DUBUQUE	59.3	59.8	59.8	60.0	59.7	59.9	60.0	59.7	60.2	59.8	59.6	59.5	59.8
IOWA CITY	101.3	101.6	101.4	100.9	102.5	102.1	102.4	103.2	102.8	103.4	103.7	104.1	104.8
SIoux CITY	88.1	87.5	87.7	87.8	88.2	88.5	88.4	88.2	89.3	88.2	87.9	87.9	88.0
WATERLOO/CEDAR FALLS	91.0	91.0	90.8	91.1	91.2	91.2	90.8	90.6	90.6	90.5	90.0	90.6	91.1

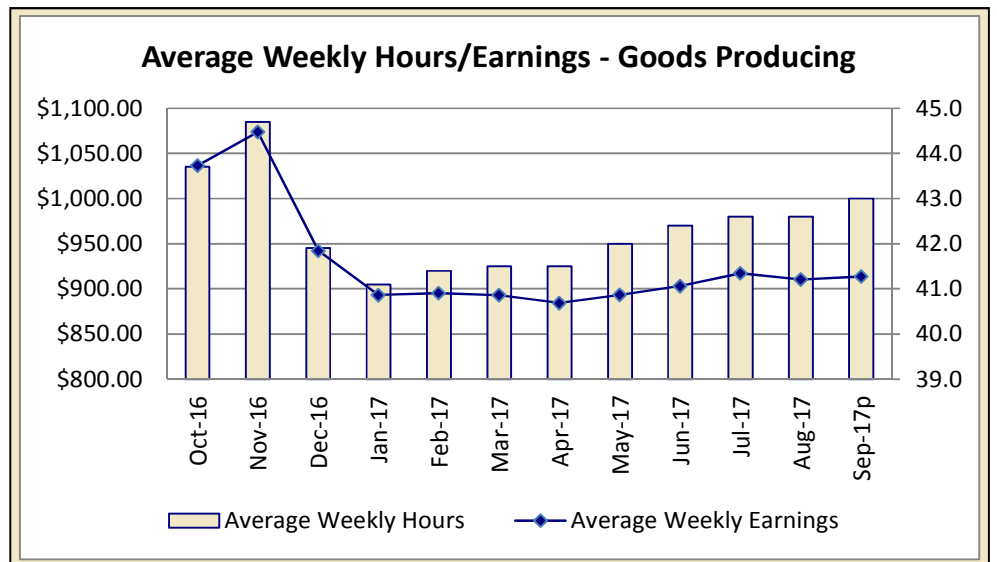
IOWA'S HOURS & EARNINGS



Goods-producing Hours & Earnings	
Average Weekly Earnings	\$913.75
Average Hourly Earnings	\$21.25
Average Weekly Hours	43.0

Production workers in Iowa's goods-producing sector averaged \$910.35 a week in September, little changed versus August, but down \$124.13 versus last year. The average weekly hours have been scaled back by 42 minutes and the average hourly earnings have been trimmed by \$2.50. Much of the decline is due to a large drop in weekly schedules for construction workers. Despite this drop, production workers in construction are still averaging \$1,063.39 a week, substantially higher than the \$817.49 per week averaged for manufacturing workers.

Within retail establishments, production workers averaged \$392.95 in September, up \$29.57 versus last year. The gain was primarily due to an increase in average weekly hours. Finance workers averaged \$879.68 in September, down \$15.92 compared to last year.



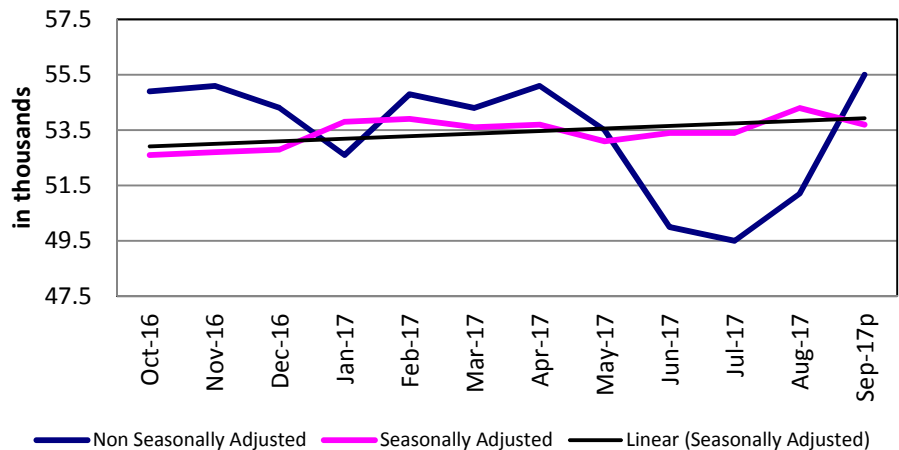
METROPOLITAN STATISTICAL AREAS

[CLICK TABLE FOR DATA](#)

Ames MSA Employment	
Total Nonfarm 15 ^p	55,500
Total Nonfarm 14	54,300
% Change 1 Yr	2.21%
Noteworthy Expanding and Contracting Industries (1 yr)	
Goods Producing	2.99%
Fed Government	0.00%

p - preliminary data

Ames - Nonfarm Employment



The Ames metropolitan statistical area seasonally gained 4,300 jobs in September. This month's increase is average compared to prior years and lifts total nonfarm employment to 55,500 jobs. Government was responsible for most of the gain (+4,200), although private services added 100 jobs. Goods-producing industries were unchanged since August.

Annually, nonfarm employment is up 1,200 jobs. Government has bolstered staffing in state and local government and rests 600 jobs over last September. Private services are up 400 and goods-producing industries have added 200 jobs.

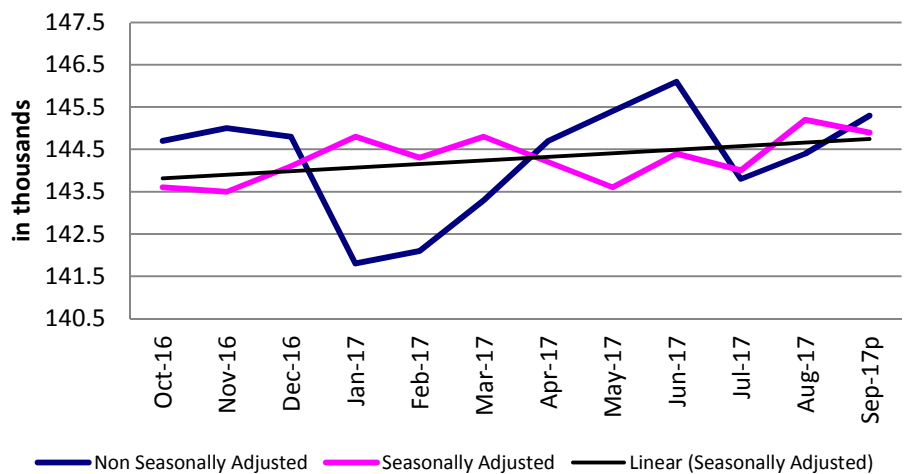
For additional information, contact James Morris (515-281-8515)

[CLICK TABLE FOR DATA](#)

Cedar Rapids MSA Employment	
Total Nonfarm 15 ^p	145,300
Total Nonfarm 14	143,600
% Change 1 Yr	1.18%
Noteworthy Expanding and Contracting Industries (1 yr)	
Prof & Business	4.26%
Information	-4.88%

p - preliminary data

Cedar Rapids - Nonfarm Employment



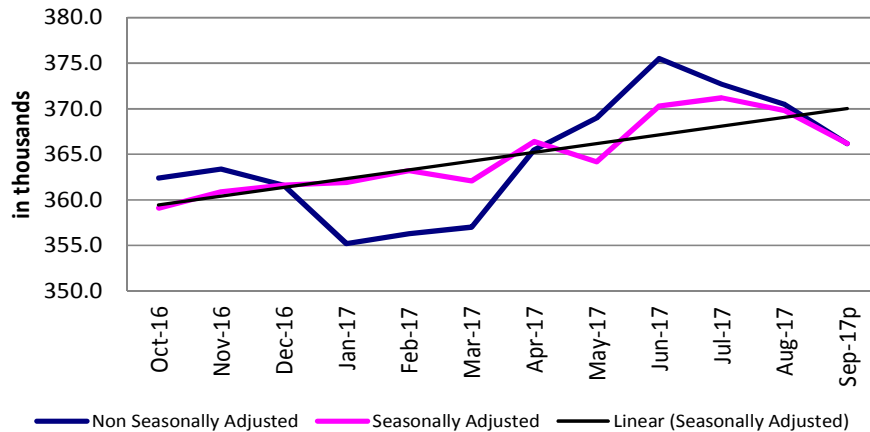
The Cedar Rapids metropolitan statistical area experienced its second consecutive increase, adding 900 jobs. Total nonfarm employment is 145,300.

Local government and educational and health services were the only super-sectors with employment increases this month, with gains of 1,800 and 200, respectively. Goods producing sectors shed 300 jobs, all in manufacturing. Leisure and hospitality also shed 300 jobs. Trade, transportation and warehousing pared 200 jobs while information and professional and business services each pared 100 jobs.

Over the year the area added 1,700 jobs with the largest gain in professional and business services (+600). Trade, transportation and warehousing, financial activities and educational and health services have each gained 200 jobs from one year ago. Employment in the information sector has trimmed 200 jobs from one year ago.

For additional information, contact Dennis Schwartz (515-281-5754)

Des Moines/West Des Moines - Nonfarm Employment



[CLICK TABLE FOR DATA](#)

Des Moines MSA Employment	
Total Nonfarm 15p	366,200
Total Nonfarm 14	359,700
% Change 1 Yr	1.81%
Noteworthy Expanding and Contracting Industries (1 yr)	
Prof & Business	6.22%
Information	-6.06%

p - preliminary data

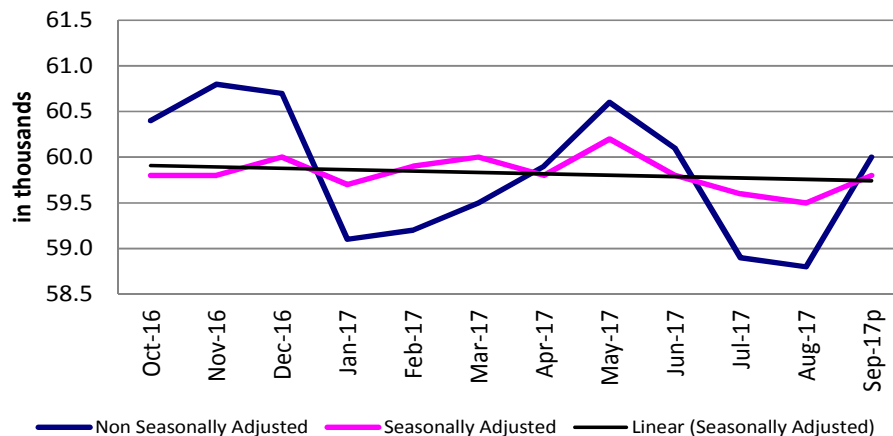
The Des Moines Metro area lost 4,300 jobs in September, lowering total nonfarm down to 366,200 jobs. This loss is large compared to the prior ten-year history and was entirely due to losses in private industries. September is generally a time when the economy starts to release summer employment, so job losses are common in most industries. Goods-producing sectors shed 400 jobs while private services shed 5,600 jobs. Government seasonally added 1,700 jobs primarily at the local level yet remains down 900 jobs versus this time last year.

Leisure and hospitality decreased by 2,500 jobs in September to lead all sectors. This decline marks the second consecutive drop for this sector that added a larger than expected number of temporary summer employees this year. Professional and business services also decreased this month following several months gains (-1,500). The majority of the losses this month were in professional, scientific, and technical services. Trade, transportation, and utilities pared 900 jobs due to layoffs in retail trade.

Annually, the Des Moines metro remains up 6,500 jobs despite recent losses. No sector has fared better than professional and business services (+3,000). Leisure and hospitality has added 1,600 jobs despite the recent declines. Construction and education and health services each are up 1,200 jobs annually. Private sector losses have been limited to just information services and trade, transportation, and utilities, each down 400 jobs.

For additional information, contact James Morris (515-281-8515)

Dubuque - Nonfarm Employment



[CLICK TABLE FOR DATA](#)

Dubuque MSA Employment	
Total Nonfarm 15p	60,000
Total Nonfarm 14	59,900
% Change 1 Yr	2.04%
Noteworthy Expanding and Contracting Industries (1 yr)	
Local Government	2.33%
Pvt Service Providing	-0.46%

p - preliminary data

Total nonfarm employment in Dubuque gained 1,200 jobs and now rests at 60,000 jobs. This month's seasonal increase is average versus the prior ten-year history. Government added 900 jobs as local schools resumed classes following the summer reprieve. Private services added 500 jobs this month, slightly lower than seasonally expected for September. Goods-producing industries shed 200 jobs primarily within construction industries.

Annually, the Dubuque metro area remains up 100 jobs. Both goods-producing industries and government have added 200 and 100 jobs, respectively. Private services are down 200 jobs compared to last year.

For additional information, contact James Morris (515-281-8515)

METROPOLITAN STATISTICAL AREAS

CLICK TABLE FOR DATA

Iowa City MSA Employment	
Total Nonfarm 15p	105,100
Total Nonfarm 14	102,000
% Change 1 Yr	3.04%
Noteworthy Expanding and Contracting Industries	
Local Government	6.15%
Trade & Transport	-2.98%

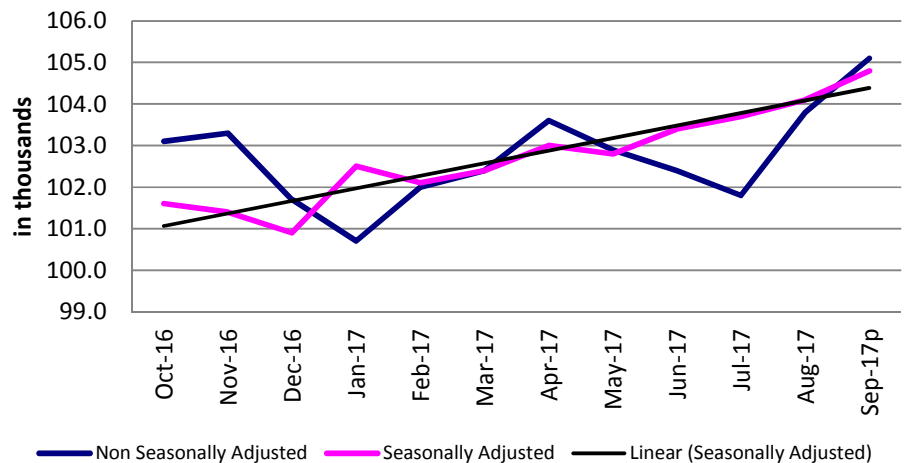
p - preliminary data

Nonfarm employment in the Iowa City metropolitan statistical area added 1,300 jobs from last month mostly due to seasonal gains in state and local government employment (+500 each). Leisure and hospitality also experienced a gain, adding 200 jobs. Trade, transportation and warehousing and professional and business services each pared 100 jobs. There are no sectors with a jobs decrease for the month.

The metro area has added 3,100 jobs from one year ago, boosted by gains of 1,600 in government and 1,600 in private service-providing sectors. Leisure and hospitality added 200 jobs and professional and business services added 100 jobs. Trade, transportation and warehousing pared 500 jobs and goods producing industries are down just 100 jobs.

For additional information, contact Dennis Schwartz (515-281-5754)

Iowa City - Nonfarm Employment



CLICK TABLE FOR DATA

Sioux City MSA Employment	
Total Nonfarm 15p	88,200
Total Nonfarm 14	88,100
% Change 1 Yr	0.11%
Noteworthy Expanding and Contracting Industries	
Trade & Transport	3.59%
Prof & Business	-2.47%

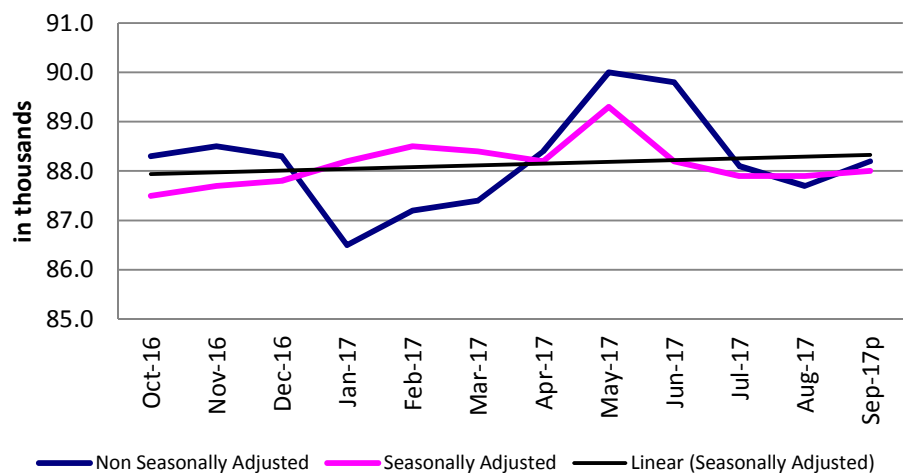
p - preliminary data

Employment in the Sioux City MSA is up 500 jobs from August. The gain is attributed entirely to local government which added 900 jobs. Professional and business services and leisure and hospitality each pared 200 jobs. Manufacturing shed 100 jobs and trade, transportation and warehousing is unchanged.

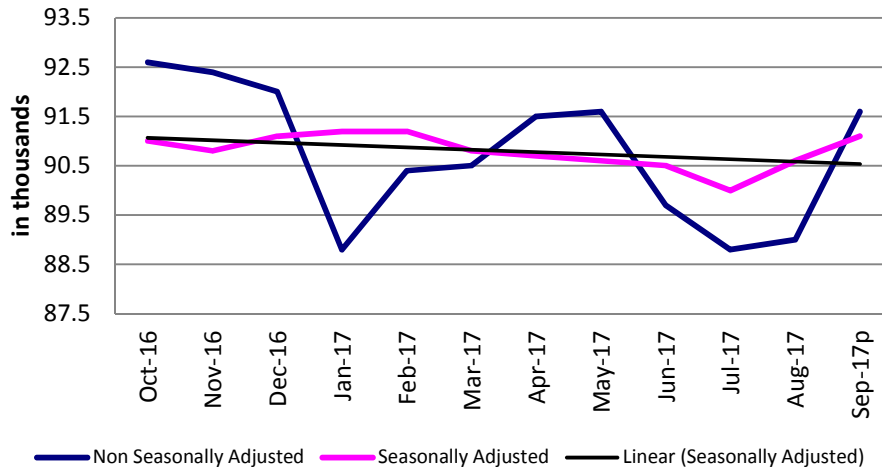
Overall, area employment is 100 above one year ago. Goods producing industries have added 300 jobs, led by a gain of 200 in manufacturing. Trade, transportation and warehousing has added 700 jobs. Professional and business services shed 200 jobs. Government employment is down 100 jobs from one year ago.

For additional information, contact Dennis Schwartz (515-281-5754)

Sioux City - Nonfarm Employment



Waterloo/Cedar Falls - Nonfarm Employment



[CLICK TABLE FOR DATA](#)

Waterloo/Cedar Falls MSA Employment	
Total Nonfarm 15p	91,600
Total Nonfarm 14	91,500
% Change 1 Yr	0.11%
Noteworthy Expanding and Contracting Industries	
State Government	8.00%
Retail Trade	-4.50%

p - preliminary data

The Waterloo/Cedar Falls metropolitan statistical area's total nonfarm employment increased 2,600 jobs from the previous month and stands at 91,600. State government experienced a seasonal gain of 1,600 jobs while local government added 700 jobs. Educational and health services also added 500 jobs. Leisure and hospitality pared 200 jobs with an adjustment that is also seasonal in nature. Trade, transportation and warehousing and professional and business services each pared 100 jobs.

Over the year, employment is up 100 jobs due to a mixed bag of small gains and losses with the most significant being a gain of 400 jobs in government. Manufacturing is unchanged from one year ago.

For additional information, contact Dennis Schwartz (515-281-5754)

[LINKS TO ADDITIONAL INFORMATION](#)

Click on a link below to visit web page

[Worker Adjustment & Retraining Notification Act \(WARN\)](#)

[U.S. Bureau of Labor Statistics](#)

[Unemployment Insurance Benefit Payments](#)

[Consumer Price Index \(CPI\)](#)

[Unemployment Insurance Benefit Paid by County](#)

[Employment Statistics for Canada](#)

[Current Employment Statistics](#)

Each month the **Current Employment Statistics** program surveys about 143,000 businesses and government agencies, representing approximately 588,000 individual worksites, in order to provide detailed industry data on employment, hours, and earnings of workers on nonfarm payrolls for all 50 States, the District of Columbia, Puerto Rico, the Virgin Islands, and about 450 metropolitan areas and divisions.

[Contact Information](#)

Iowa Workforce Development
Employment Statistics Bureau
1000 East Grand Avenue
Des Moines, IA 50319-0209
Tel: 515-281-8515
Tel: 800-532-9793
Fax: 515-281-8195
Email: trends@iowa.gov
www.iowaworkforce.org

Equal opportunity employer/program. Auxiliary aids and services are available upon request to individuals with disabilities. For deaf and hard of hearing, use Relay 711