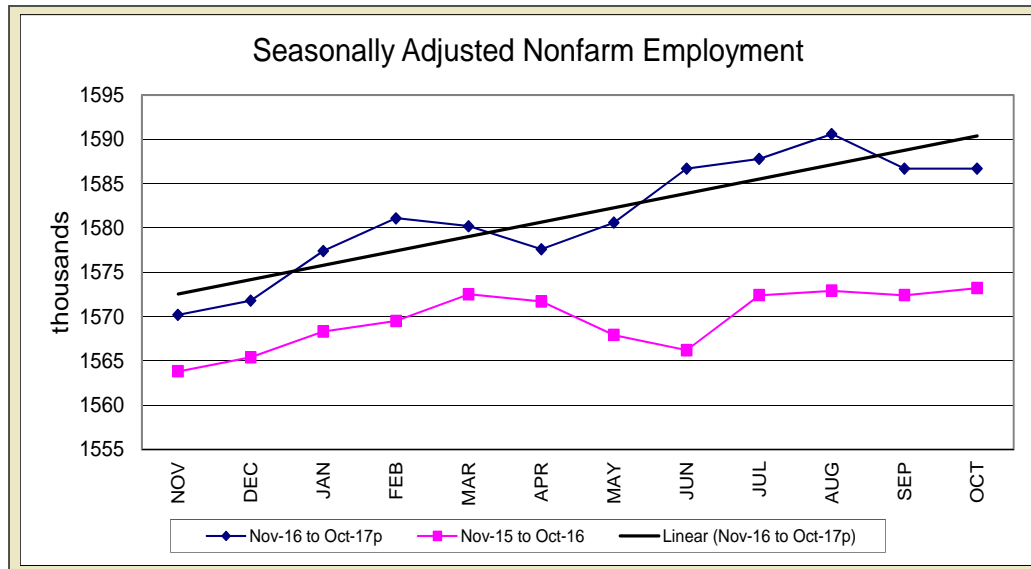


STATE OF IOWA NONFARM EMPLOYMENT WORKFORCE DEVELOPMENT

OCTOBER 2017
LMR MONTHLY

NONFARM EMPLOYMENT UNCHANGED FROM LAST MONTH



Employment in Iowa establishments was little changed compared to last month and held at 1,586,700 jobs in October. Gains in Iowa's goods-producing sectors were exactly matched by losses in service industries. Private industries pared jobs for the second-consecutive month and were led by losses in trade. On the other hand, government added 1,100 jobs due to growth at the state and local levels. Following this month's report, total nonfarm employment is now up 13,500 jobs versus last year's mark, a gain of 0.9 percent.

Manufacturing led all sectors in jobs added in October (+2,200). This month's gain for manufacturing is the second consecutive, and the fifth in the last six months. The majority of the jobs gained were in nondurable goods factories. Firms involved in food production and fabricated metal production added staff in October. Leisure and hospitality also added jobs in October (+1,800) with all of the

growth stemming from accommodations and food services. Construction increased slightly in October (+500), snapping a streak of losses stretching back to April. Alternatively, trade, transportation, and utilities pared the most jobs of any super sector in October (-2,300). The losses were sharpest in retail trade (-1,000) which has shown some signs of weakness throughout the year. Annual losses have been evident in both food and beverage stores along with general merchandise retailers. Other services shed 1,300 jobs in October and professional and business services lost 1,200 jobs. Within this sector, administrative and support and waste management alone lost 1,400 jobs since September but remains up 900 jobs annually. Other sectors posting small losses this month included education and healthcare, information, and financial activities.

Compared to last October, no sector has added more jobs in Iowa than

manufacturing (+6,000) with the majority of the gains stemming from nondurable goods factories (+4,100). The annual growth in manufacturing marks a substantial turnaround for the sector that had lost jobs annually as recently as June of this year. Education, health care, and social assistance follows closely behind with 5,800 jobs added and leisure and hospitality is third with 4,400 jobs gained. Losses have been greatest in construction (-5,300) following a record-setting year last year that included several large-scale industrial projects.

Nationally, total nonfarm employment gained 261,000 jobs in October. The largest gains were in food services and drinking establishments (+89,000) which rebounded following the decline due to inclement weather. Professional and business services and education and healthcare also fared well this month, gaining 50,000 and 41,000 jobs, respectively.

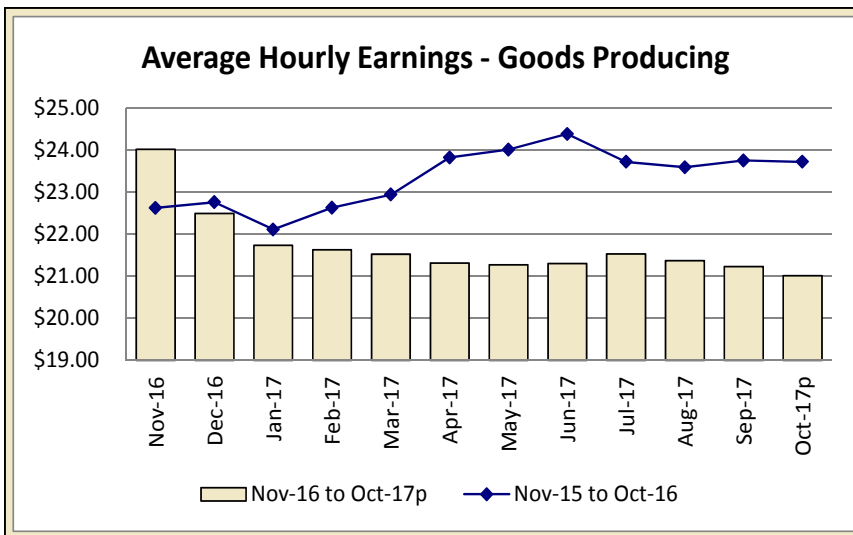
For additional information, contact James Morris (515-281-8515)

For additional information, contact James Morris (515-281-8515)

**METROPOLITAN STATISTICAL AREA
SEASONALLY ADJUSTED NONFARM EMPLOYMENT (TOTAL NONFARM)**

MSA	Oct-16	Nov-16	Dec-16	Jan-17	Feb-17	Mar-17	Apr-17	May-17	Jun-17	Jul-17	Aug-17	Sep-17	Oct-17p
AMES	52.6	52.7	52.8	53.8	53.9	53.6	53.7	53.1	53.4	53.4	54.3	53.8	53.8
CEDAR RAPIDS	143.6	143.5	144.1	144.8	144.3	144.8	144.3	143.6	144.4	144.0	145.2	145.2	145.2
DES MOINES/W. DES MOINES	359.1	360.9	361.6	361.9	363.2	362.1	365.1	364.2	370.3	371.2	369.8	366.4	367.2
DUBUQUE	59.8	59.8	60.0	59.7	59.9	60.0	59.7	60.2	59.8	59.6	59.5	59.7	59.7
IOWA CITY	101.6	101.4	100.9	102.5	102.1	102.4	103.2	102.8	103.4	103.7	104.1	104.6	103.7
SIOUX CITY	87.5	87.7	87.8	88.2	88.5	88.4	88.2	89.3	88.2	87.9	87.9	87.9	87.5
WATERLOO/CEDAR FALLS	91.0	90.8	91.1	91.2	91.2	90.8	90.6	90.6	90.5	90.0	90.6	91.0	90.5

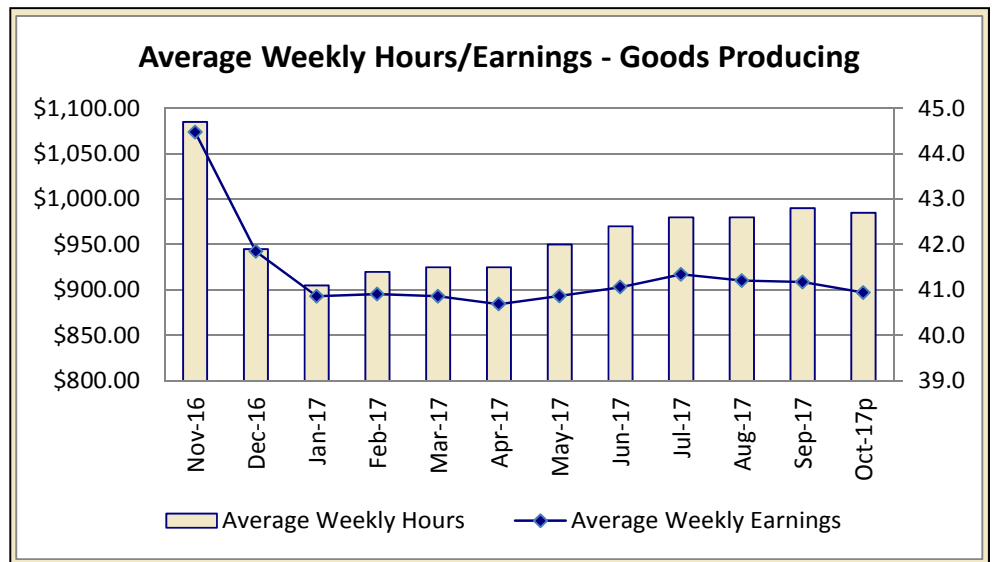
IOWA'S HOURS & EARNINGS



Goods-producing Hours & Earnings	
Average Weekly Earnings	\$897.13
Average Hourly Earnings	\$21.01
Average Weekly Hours	42.7

Production workers in Iowa's goods-producing sector averaged \$897.13 in October, down \$11.51 compared to September and \$139.43 lower than one year ago. Much of the loss in weekly wages versus last year stems from the paring of overtime from weekly schedules for construction workers. Manufacturing employees have had their wages increase versus last year and averaged \$828.51 a week. Production workers in construction averaged \$976.14 in weekly wages.

Within service sectors, production workers in Iowa's retail sector have added \$31.46 versus last year's level equating to \$392.14 in weekly wages. Finance workers earned \$938.35 in October, little changed since one year ago.



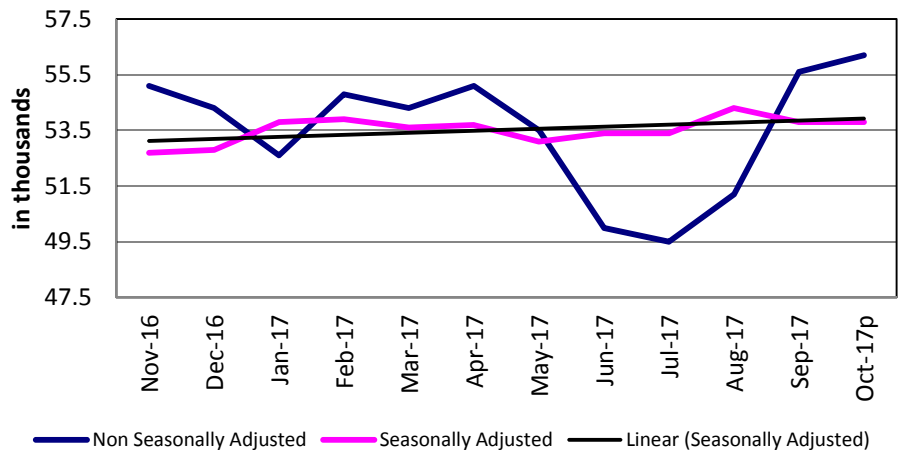
METROPOLITAN STATISTICAL AREAS

[CLICK TABLE FOR DATA](#)

Ames MSA Employment	
Total Nonfarm 15 ^p	56,200
Total Nonfarm 14	54,900
% Change 1 Yr	2.37%
Noteworthy Expanding and Contracting Industries (1 yr)	
Goods Producing	4.55%
Local Government	0.00%

p - preliminary data

Ames - Nonfarm Employment



Nonfarm employment in Ames increased by 600 jobs in October and now rests at 56,200 jobs. Government drove the job gains this month (+400) with most of the growth being in state government education. Private services also gained jobs this month (+200) and good producing industries were unmoved.

Since last October, the Ames Metro has added 1,300 jobs. Both private services and goods producing industries have advanced (by 500 and 300 jobs, respectively). Government is up 500 jobs at the state-level.

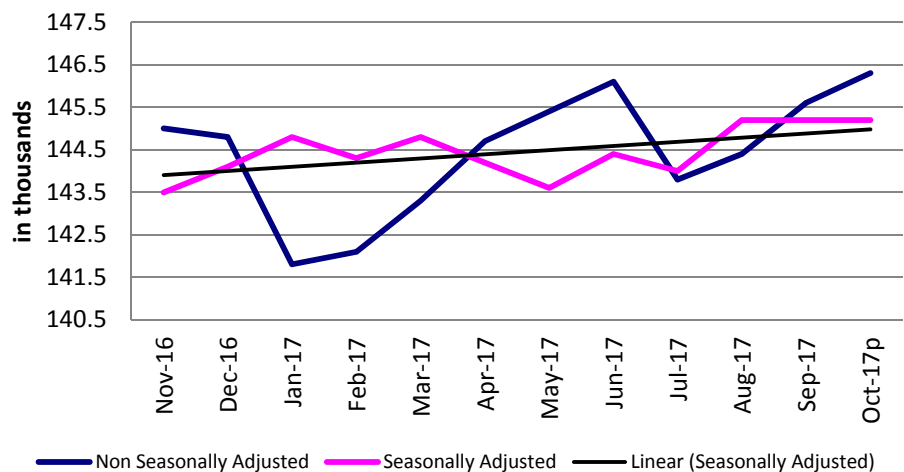
For additional information, contact James Morris (515-281-8515)

[CLICK TABLE FOR DATA](#)

Cedar Rapids MSA Employment	
Total Nonfarm 15 ^p	146,300
Total Nonfarm 14	144,700
% Change 1 Yr	1.11%
Noteworthy Expanding and Contracting Industries (1 yr)	
Prof & Business	2.78%
Information	-4.88%

p - preliminary data

Cedar Rapids - Nonfarm Employment



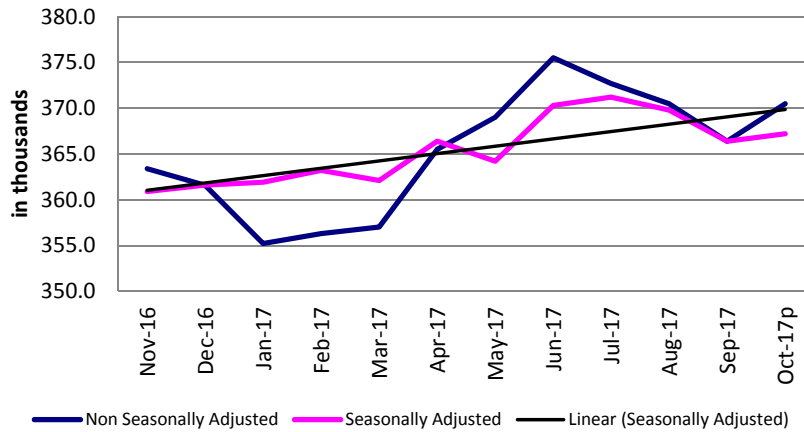
The Cedar Rapids metropolitan statistical area added jobs for the third consecutive month, gaining 700 jobs and bringing total nonfarm employment to 146,300.

Educational and health services added 500 jobs to lead all sectors. Local government gained 300 jobs and professional and business services added 200 jobs. Leisure and hospitality and natural resources and construction were the only super-sectors with employment decreases this month, paring 200 and 100 jobs, respectively. Overall, manufacturing was unchanged, however durable goods manufacturing added 100 jobs.

Over the year the area added 1,600 jobs with the largest gain in professional and business services (+400). Manufacturing, financial activities, leisure and hospitality and educational and health services have each gained 200 jobs from one year ago. Employment in the information sector has trimmed 200 jobs from one year ago.

For additional information, contact Dennis Schwartz (515-281-5754)

Des Moines/West Des Moines - Nonfarm Employment



[CLICK TABLE FOR DATA](#)

Des Moines MSA Employment	
Total Nonfarm 15p	370,500
Total Nonfarm 14	362,400
% Change 1 Yr	2.24%
Noteworthy Expanding and Contracting Industries (1 yr)	
Prof & Business	6.13%
Information	-4.62%

p - preliminary data

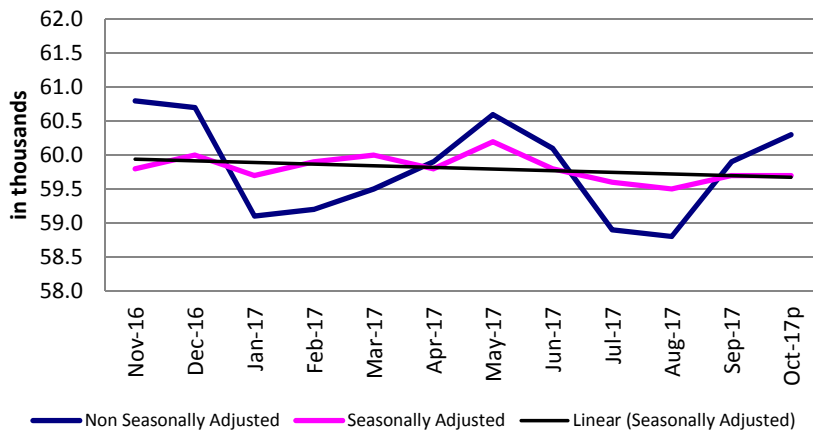
The Des Moines Metro area added 4,100 jobs in October, raising the total number of jobs to 370,500. This month's gain is more than expected, but follows two months of larger than expected declines. At least some of this month's growth, and large decline last month, could be explained by a seasonal shift in local government education. Seasonal school hiring was relatively late this year. This shift equated to a gain of 2,200 in government which is now up 700 jobs annually. The metro area combined is up 8,100 jobs.

Within private sectors, the largest monthly gain was in professional and business services (+1,000). Education, healthcare and social assistance rose by 700 jobs. Most of this monthly increase was seasonal and due to a gain in private educational services. Retail trade advanced this month (+500) and fueled all of the gain in trade, transportation and utilities. The only losses this month were in leisure and hospitality (-400). This loss is seasonal and average for this time of year as demand for these services wanes with the colder weather.

Annually, professional and business services leads all sectors in jobs gained (+3,000). Administrative and support and waste management services has added the bulk to these job gains (+2,000). Smaller annual gains were seen in education, healthcare and social assistance (+1,700) and leisure and hospitality (+1,500). Losses have been limited to just two sectors: trade, transportation, and utilities (-500) and information (-300).

For additional information, contact James Morris (515-281-8515)

Dubuque - Nonfarm Employment



[CLICK TABLE FOR DATA](#)

Dubuque MSA Employment	
Total Nonfarm 15p	60,300
Total Nonfarm 14	60,400
% Change 1 Yr	0.67%
Noteworthy Expanding and Contracting Industries (1 yr)	
Goods Producing	2.61%
Trade & Transport	-1.60%

p - preliminary data

Establishments added 400 jobs in October in Dubuque, raising the total number of jobs to 60,300. This month's increase is average compared to the seasonal patterns over the past ten years. Private services were responsible for all of the gains this month (+500) as goods-producing industries pared 100 jobs. Government remains at the same level as last month and October of last year.

Annually, nonfarm employment is down 100 jobs. Private services are down 400 jobs but have been partially offset by a gain of 300 jobs in goods producing industries.

For additional information, contact James Morris (515-281-8515)

[CLICK TABLE FOR DATA](#)

Iowa City MSA Employment	
Total Nonfarm 15p	105,200
Total Nonfarm 14	103,100
% Change 1 Yr	2.04%
Noteworthy Expanding and Contracting Industries	
State Government	2.93%
Trade & Transport	-2.98%

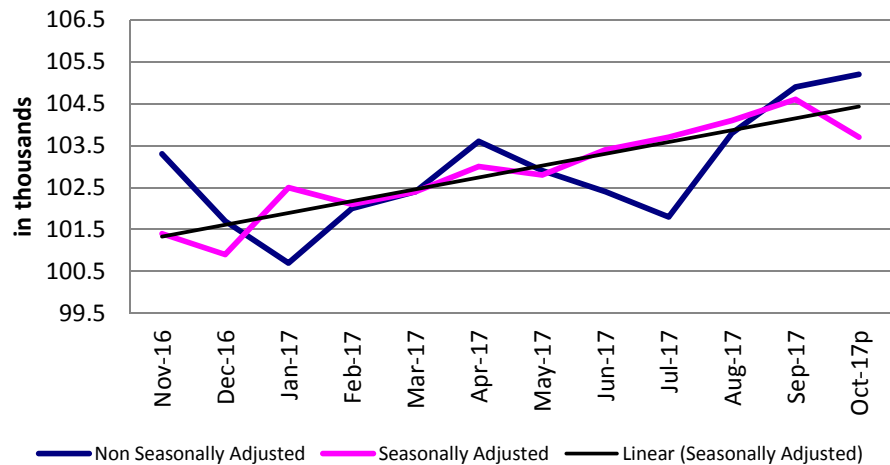
p - preliminary data

Nonfarm employment in the Iowa City metropolitan statistical area added 300 jobs from last month due to gains in service providing industries. Government added 200 jobs, all in state government. Leisure and hospitality and trade, transportation and warehousing each pared 100 jobs.

The metro area has added 2,100 jobs from one year ago, boosted by gains of 1,000 in government and 1,200 in private service-providing sectors. Leisure and hospitality added 200 jobs and professional and business services is unchanged. Trade, transportation and warehousing pared 500 jobs and goods producing industries are down just 100 jobs.

For additional information, contact Dennis Schwartz (515-281-5754)

Iowa City - Nonfarm Employment



[CLICK TABLE FOR DATA](#)

Sioux City MSA Employment	
Total Nonfarm 15p	88,300
Total Nonfarm 14	88,300
% Change 1 Yr	0.00%
Noteworthy Expanding and Contracting Industries	
Manufacturing	2.00%
Retail Trade	-2.70%

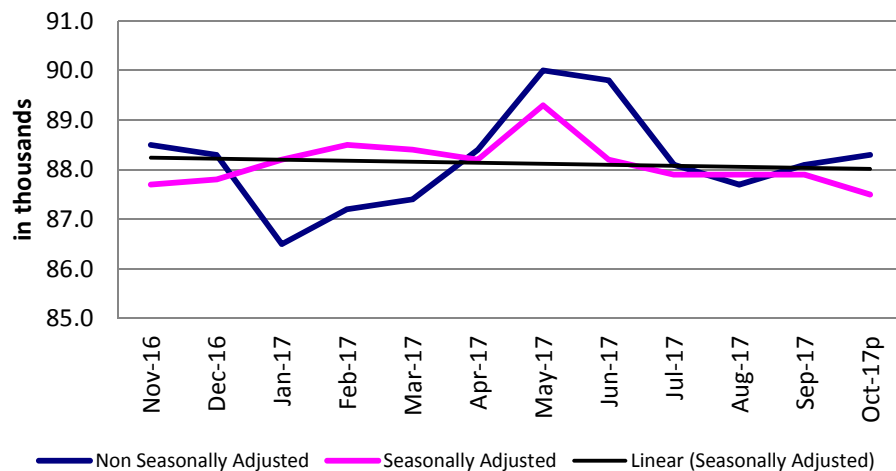
p - preliminary data

Employment in the Sioux City MSA is up 200 jobs from September. The gain is attributed to goods producing (+200) as a gain of 100 in professional and business services was offset by a loss of 100 in trade, transportation and warehousing. In addition, a gain in government (+200) was offset by a loss in leisure and hospitality (-200).

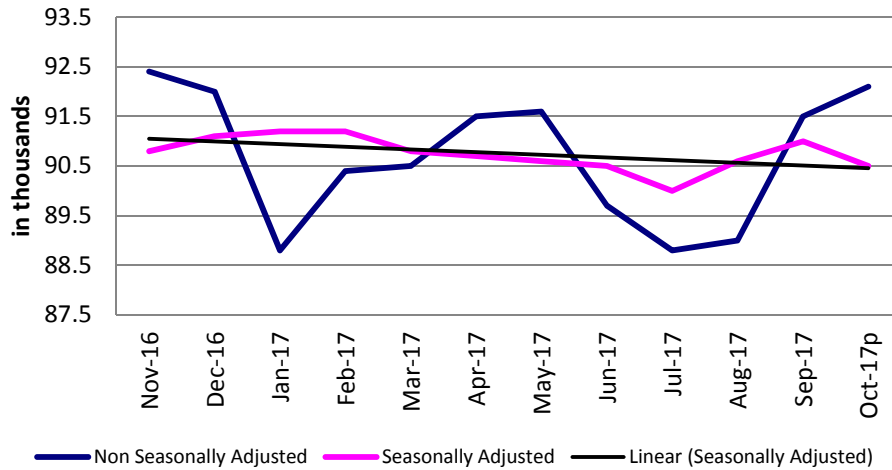
Overall, area employment is unchanged from one year ago. Goods producing industries have added 200 jobs, boosted by a gain of 300 in manufacturing. Trade, transportation and warehousing added 300 jobs. Professional and business services shed 200 jobs. Government employment is unchanged from one year ago at every level.

For additional information, contact Dennis Schwartz (515-281-5754)

Sioux City - Nonfarm Employment



Waterloo/Cedar Falls - Nonfarm Employment



[CLICK TABLE FOR DATA](#)

Waterloo/Cedar Falls MSA Employment	
Total Nonfarm 15p	92,100
Total Nonfarm 14	92,600
% Change 1 Yr	-0.54%
Noteworthy Expanding and Contracting Industries	
Non-durable Mfg	4.26%
Retail Trade	-8.77%

p - preliminary data

The Waterloo/Cedar Falls metropolitan statistical area's total nonfarm employment increased 600 jobs from the previous month and stands at 92,100. Gains in state and local government represent half of this month's gain, adding 200 and 100 jobs, respectively. Educational and health services also contributed with an expansion of 100 jobs. Leisure and hospitality pared 200 jobs and trade, transportation and warehousing shed 100 jobs.

Over the year, employment is down 500 jobs due to a mixed bag of gains and losses, most notably a loss of 800 jobs in trade, transportation and warehousing. Retail trade alone has pared 1,000 jobs from one year ago. Manufacturing and educational and health services are the only super-sectors with job gains, adding 300 jobs each.

For additional information, contact Dennis Schwartz (515-281-5754)

LINKS TO ADDITIONAL INFORMATION

Click on a link below to visit web page

Worker Adjustment & Retraining Notification Act (WARN)

U.S. Bureau of Labor Statistics

Unemployment Insurance Benefit Payments

Consumer Price Index (CPI)

Unemployment Insurance Benefit Paid by County

Employment Statistics for Canada

Current Employment Statistics

Each month the **Current Employment Statistics** program surveys about 143,000 businesses and government agencies, representing approximately 588,000 individual worksites, in order to provide detailed industry data on employment, hours, and earnings of workers on nonfarm payrolls for all 50 States, the District of Columbia, Puerto Rico, the Virgin Islands, and about 450 metropolitan areas and divisions.

Contact Information

Iowa Workforce Development
Employment Statistics Bureau
1000 East Grand Avenue
Des Moines, IA 50319-0209
Tel: 515-281-8515
Tel: 800-532-9793
Fax: 515-281-8195
Email: trends@iowa.gov
www.iowaworkforce.org

Equal opportunity employer/program. Auxiliary aids and services are available upon request to individuals with disabilities. For deaf and hard of hearing, use Relay 711