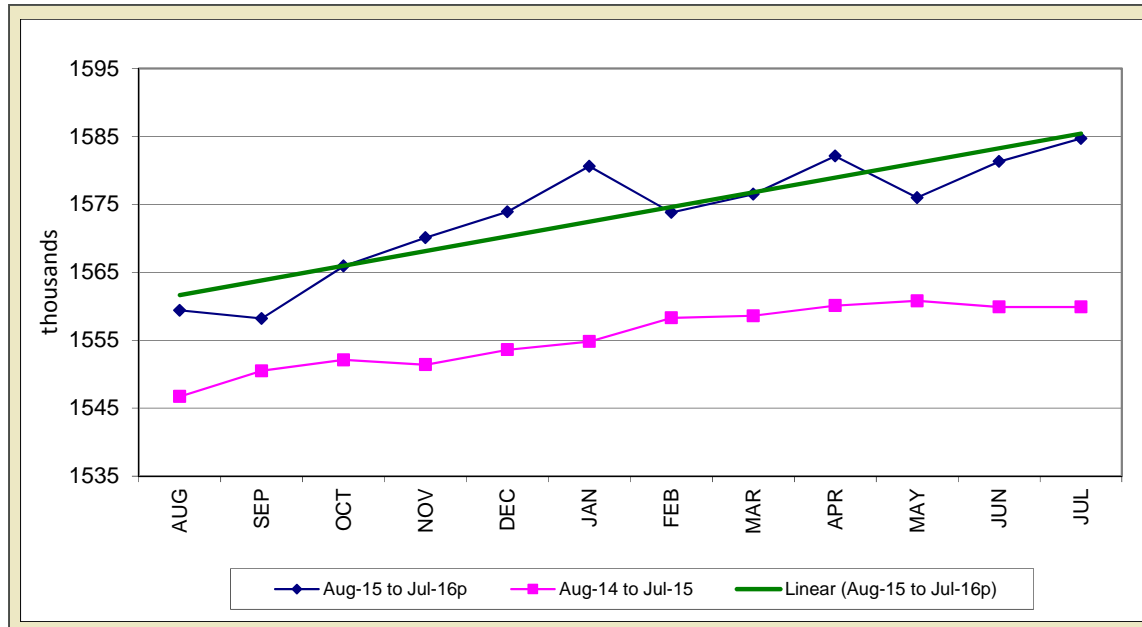


STATE OF IOWA NONFARM EMPLOYMENT WORKFORCE DEVELOPMENT

JULY 2016
LMR MONTHLY

EDUCATION AND HEALTH CARE FACILITATES INCREASE IN NONFARM EMPLOYMENT



Total nonfarm employment in Iowa added 3,400 jobs in July and now rests at 1,584,700. This is the second-consecutive gain for the establishment survey and the fifth for 2016. Monthly declines occurred only twice so far in 2016, in February and May. Service industries added all of the jobs this month; goods-producing sectors shed 200 jobs. Government added 700 jobs in state government, although this segment of government trails last year's level by 600 jobs. Combined, government is up 4,200 jobs due to hiring at the local level.

Education and health care added 1,700 jobs to lead all sectors. Health care alone added 1,200 jobs due mostly to hiring in ambulatory health care services, including dental offices and clinics. Education services also advanced this month, erasing a slight decline last month of 200 jobs. Professional and business services snapped a two-month decline by

adding 1,500 jobs in July. Gains this month were mostly focused in professional, scientific, and technical services. Administrative support and waste management pared jobs for the third-consecutive month (-400). The other services sector gained jobs for the second straight month (1,100) and has rebounded following four consecutive declines from February through May. Sector losses were limited to leisure and hospitality (-600), trade and transportation (-600), manufacturing (-400), and financial activities (-300).

Compared to last July, total nonfarm employment remains up 23,700 jobs. Construction continues to sustain job growth in Iowa and is up 12,800 jobs alone. Education and health care also remains markedly up (+4,800) due to unwavering, inelastic demand for these essential services. Other annual gains included leisure and hospitality (+4,700), other services (+4,100), and

financial activities (+2,900). Losses continue to plague the manufacturing sector (-7,100) which has lost more jobs than all other super sectors combined. Professional and business services has also pared jobs related to cutbacks (-1,900), and information services continues to trend down due to streamlining processes and reduced demand for print media (-1,200).

Nationally, nonfarm employment added 255,000 jobs in July. This is the second-consecutive large increase following a stagnant May which saw just 24,000 jobs added. The annual growth rate of 1.7 percent is 0.2 percent higher than Iowa's 1.5 percent growth rate.

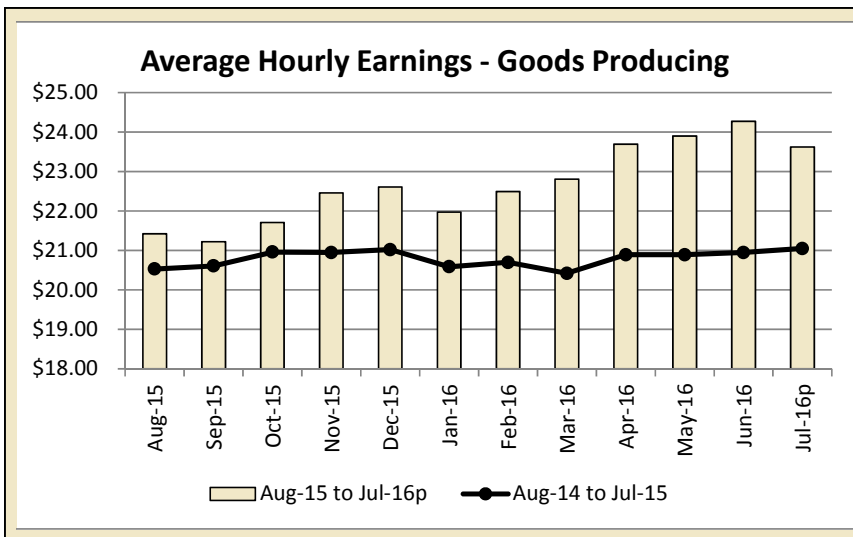
For additional information, contact James Morris (515-281-8515)

For additional information, contact James Morris (515-281-8515)

**METROPOLITAN STATISTICAL AREA
SEASONALLY ADJUSTED NONFARM EMPLOYMENT (TOTAL NONFARM)**

MSA	Jul-15	Aug-15	Sep-15	Oct-15	Nov-15	Dec-15	Jan-16	Feb-16	Mar-16	Apr-16	May-16	Jun-16	Jul-16p
AMES	52.1	52.6	52.8	52.8	52.8	52.8	53.1	53.2	52.7	53.6	53.4	53.5	53.5
CEDAR RAPIDS	143.5	144.0	143.1	142.7	143.0	143.1	144.9	144.0	144.5	144.1	143.4	145.0	144.5
DES MOINES/W. DES MOINES	350.6	350.1	349.2	349.2	349.8	350.0	352.0	349.6	349.0	352.1	354.8	357.0	357.8
DUBUQUE	59.8	59.8	60.1	60.2	60.1	60.3	60.5	60.3	60.6	60.4	60.6	61.1	60.8
IOWA CITY	98.6	98.6	98.4	98.9	98.9	99.2	99.1	99.4	99.6	99.9	98.6	100.9	101.9
SIOUX CITY *													
WATERLOO/CEDAR FALLS	91.1	91.1	90.7	90.5	90.6	90.7	91.4	90.7	90.7	90.9	90.4	90.6	89.8

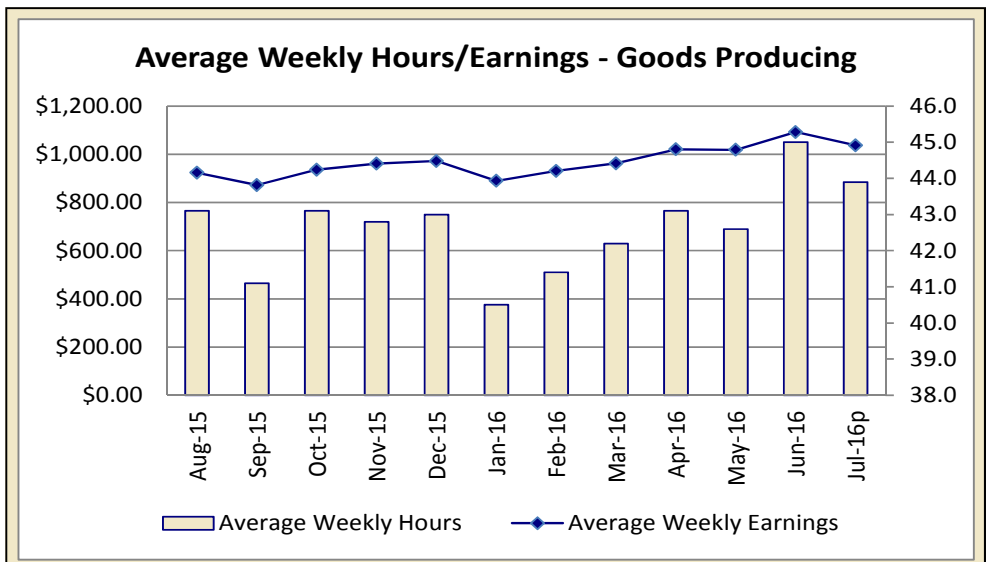
IOWA'S HOURS & EARNINGS



Goods-producing Hours & Earnings	
Average Weekly Earnings	\$1,036.92
Average Hourly Earnings	\$23.62
Average Weekly Hours	43.9

Production workers in Iowa's goods-producing sectors averaged \$1,036.92 a week in July, up \$148.61 compared to last year. Virtually all of the annual gain stems from construction and is primarily due to a substantial gain in overtime hours worked for production and nonsupervisory workers. Manufacturing workers averaged \$768.53 a week, \$29.05 less than one year ago.

Among service sectors, retail trade workers added \$16.19 per week and averaged \$370.50 in weekly earnings. This weekly earnings increase is mostly due to a gain of 57 cents per hour. Financial production workers averaged \$877.49 in July, up \$15.19 compared to one year ago.



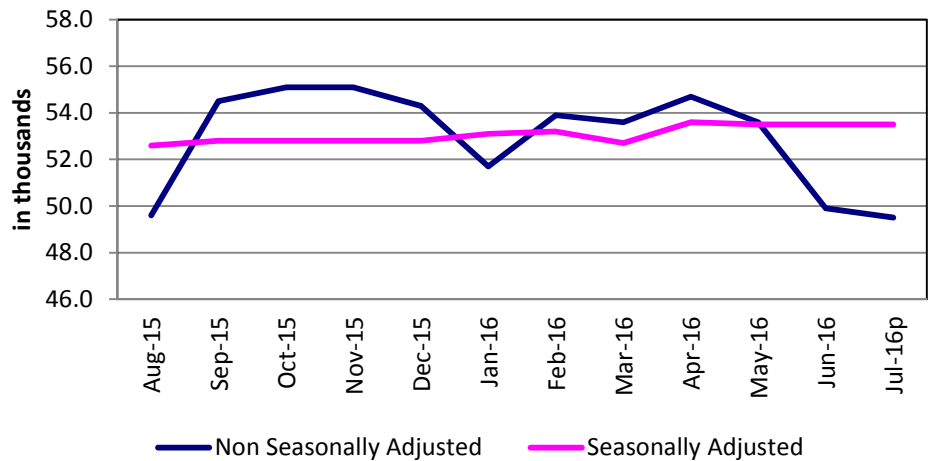
METROPOLITAN STATISTICAL AREAS

[CLICK TABLE FOR DATA](#)

Ames MSA Employment	
Total Nonfarm 15 ^p	49,500
Total Nonfarm 14	48,500
% Change 1 Yr	2.06%
Noteworthy Expanding and Contracting Industries (1 yr)	
Pvt Service Provide	3.29%
Local Government	0.00%

p - preliminary data

Ames - Nonfarm Employment



The Ames Metro area pared 400 jobs in July and now rests at 49,500 jobs. Government drove most of the movement this month with 400 jobs seasonally pared in state government and 200 jobs shed in local government. In both cases, these losses were primarily related to education. Goods-producing industries were unmoved since June.

Annually, nonfarm employment in the Ames area has added 1,000 jobs. Private services fueled most of the gain (+800), although gains of 100 jobs were found in both goods-producing industries and government.

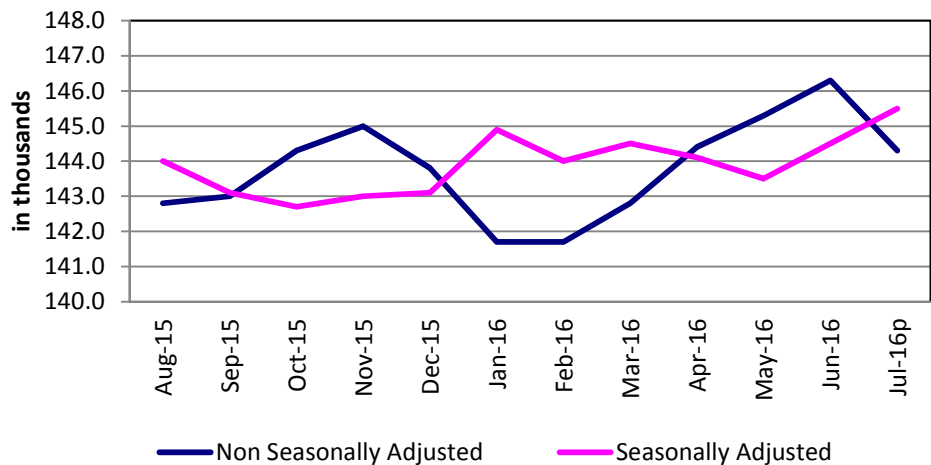
For additional information, contact James Morris (515-281-8515)

[CLICK TABLE FOR DATA](#)

Cedar Rapids MSA Employment	
Total Nonfarm 15 ^p	144,300
Total Nonfarm 14	142,600
% Change 1 Yr	1.19%
Noteworthy Expanding and Contracting Industries (1 yr)	
Prof & Bus Services	7.41%
Information	-4.55%

p - preliminary data

Cedar Rapids - Nonfarm Employment



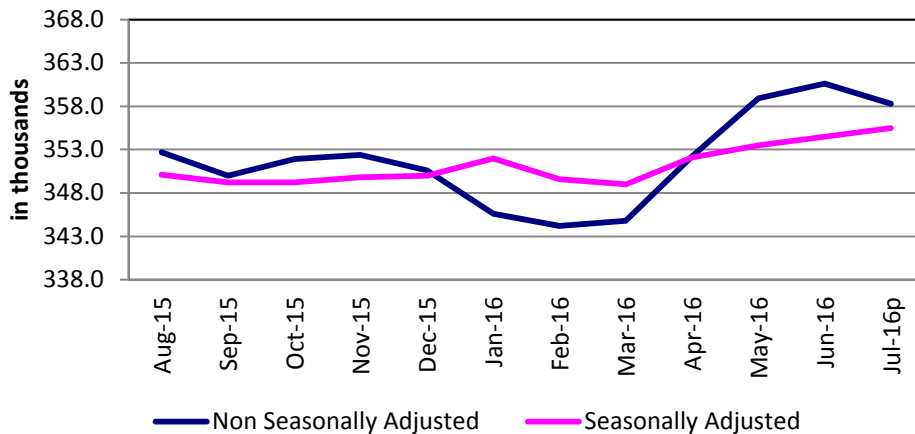
The Cedar Rapids metropolitan statistical area shed 2,000 nonfarm jobs from June, and now stands at 144,300. Total nonfarm employment in the metro area is 1,700 above one year ago.

Employment increases this month were few and far between with only two sectors realizing employment increases. Natural resources and construction added 300 jobs and manufacturing gained 200 jobs, all in non-durable goods manufacturing. Employment losses were largely centered around education-related services with the bulk of the losses in local government, which experienced a seasonal paring of 2,100 jobs. Educational and health services shed 100 jobs and trade, transportation and warehousing trimmed 200 jobs.

Over the year, government and information are the only two sectors with employment losses, each paring 200 jobs. Professional and business services has added 1,000 jobs, accompanied by several smaller gains of 300 or less.

For additional information, contact Dennis Schwartz (515-281-5754)

**Des Moines/West Des Moines -
Nonfarm Employment**



[CLICK TABLE FOR DATA](#)

Des Moines MSA Employment	
Total Nonfarm 15p	358,300
Total Nonfarm 14	351,100
% Change 1 Yr	2.05%
Noteworthy Expanding and Contracting Industries (1 yr)	
Mining & Construct	6.95%
State Government	-6.41%

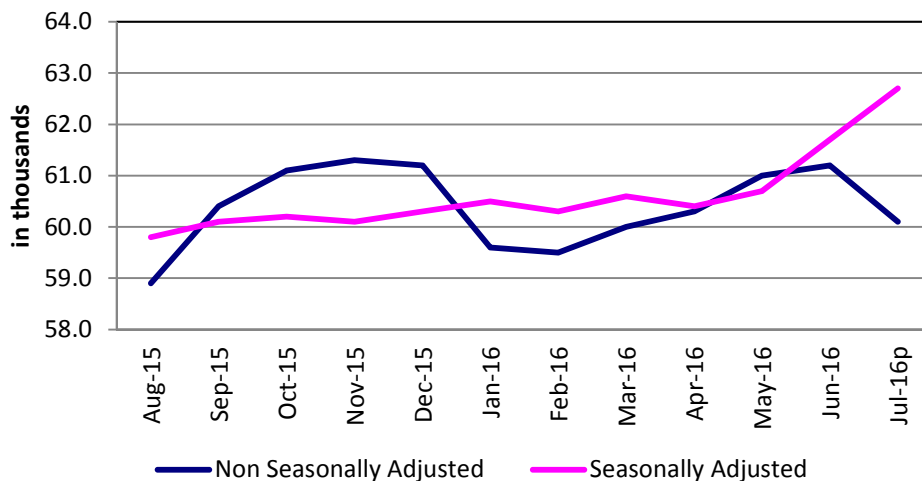
p - preliminary data

The Des Moines metro area pared 2,300 jobs in July and now rests at 358,300 jobs. Seasonal declines are not unexpected in July and this month's drop is smaller than average. Local government education fueled most of the decline this month as schools released employees for the summer. In total, government pared 2,700 jobs in the Des Moines area. Private education also fueled a drop of 400 in the education and health services sector. Other losses this month included trade and transportation and leisure and hospitality. Monthly gains were concentrated in professional and business services (+700) and mostly due to hiring in professional, scientific, and technical services. The only other sectors to gain jobs this month were mining, logging, and construction (+400) and financial activities (+200).

Compared to last July, the Des Moines metro area has added 7,200 jobs. The largest gains have been in financial activities (+3,000), followed by leisure and hospitality (+2,000) and construction (+1,300). The only private sectors to shed employment annually were manufacturing (-300) and information (-200).

For additional information, contact James Morris (515-281-8515)

Dubuque - Nonfarm Employment



[CLICK TABLE FOR DATA](#)

Dubuque MSA Employment	
Total Nonfarm 15p	60,100
Total Nonfarm 14	59,000
% Change 1 Yr	-1.80%
Noteworthy Expanding and Contracting Industries (1 yr)	
Pvt Service Provide	2.58%
Trade & Transport	-0.80%

p - preliminary data

The Dubuque Metro shed seasonally shed 1,100 jobs in July, lowering the total to 60,100 jobs. Most of the movement this month stemmed from government education shedding 1,100 jobs for the summer break. Private sectors were unmoved as private service losses (-300) were exactly offset by goods-producing gains (+300).

Annually, nonfarm employment is up 1,100 jobs (+1.9 percent). Private services have accounted for all of the growth annually as both goods producing sectors and government are unchanged versus one year ago.

For additional information, contact James Morris (515-281-8515)

[CLICK TABLE FOR DATA](#)

Iowa City MSA Employment	
Total Nonfarm 15p	99,500
Total Nonfarm 14	96,800
% Change 1 Yr	2.79%
Noteworthy Expanding and Contracting Industries	
Goods Producing	6.19%
Fed Government	0.00%

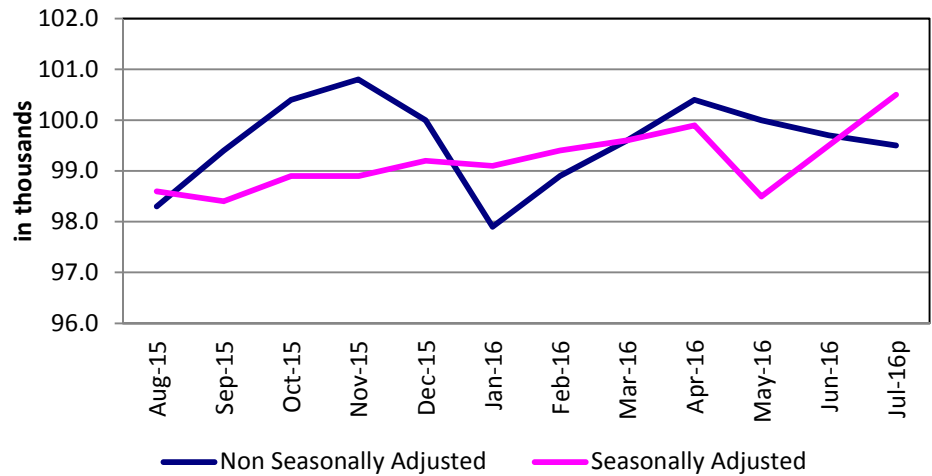
p - preliminary data

Nonfarm employment in the Iowa City metropolitan statistical area is down 200 jobs from last month. Overall, government shed just 100 jobs, with a loss of 800 in local government and state government adding 700 jobs. Trade, transportation and warehousing added 200 jobs. Goods producing industries increased employment by 100.

The metro area has added 2,700 jobs from one year ago with gains in nearly every sector. Goods producing added 600 jobs from one year ago, the best over-the-year increase the industry has seen since late 2013.

For additional information, contact Dennis Schwartz (515-281-5754)

Iowa City - Nonfarm Employment



[CLICK TABLE FOR DATA](#)

Sioux City MSA Employment	
Total Nonfarm 15p	88,300
Total Nonfarm 14	87,900
% Change 1 Yr	0.46%
Noteworthy Expanding and Contracting Industries	
Leisure & Hospitality	7.06%
Manufacturing	-2.61%

p - preliminary data

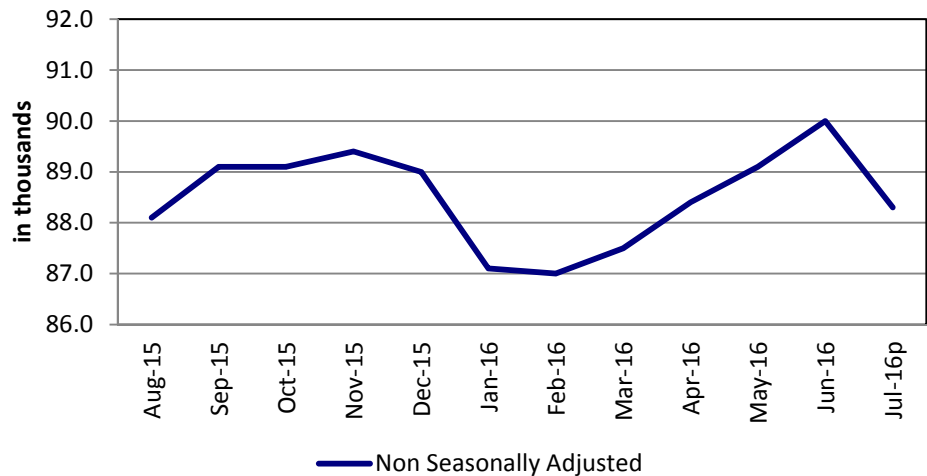
The Sioux City MSA has been redefined. It now includes: Dixon and Dakota Counties in Nebraska, Union County in South Dakota, and Woodbury and Plymouth Counties in Iowa.

Employment in the Sioux City MSA trimmed 1,700 jobs from June, driven by seasonal declines in local government. There were no sectors with a jobs gain. Goods producing shed 500 jobs, with 200 of those jobs in the manufacturing sector. Leisure and hospitality is unchanged from one year ago.

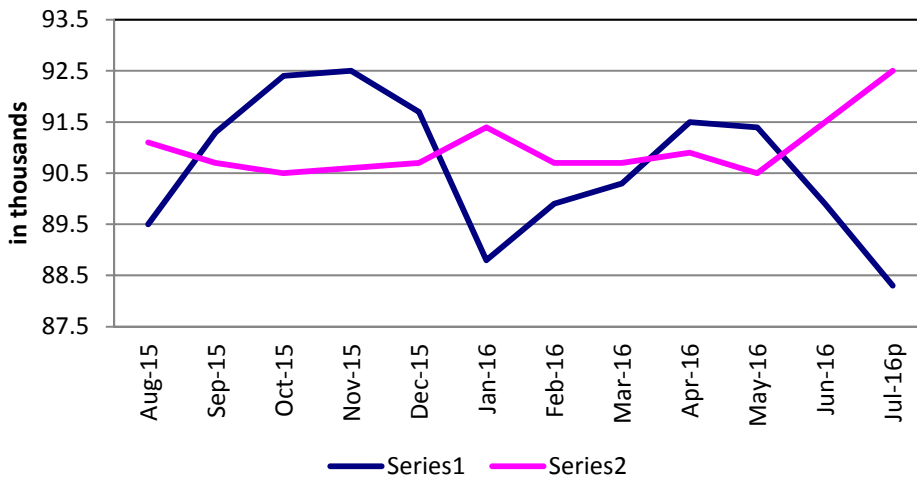
Overall, the area has added 400 jobs from one year ago. Manufacturing has pared 400 jobs from one year ago and is the only sector with an over-the-year loss. Leisure and hospitality added 600 jobs and trade, transportation and warehousing and government are unchanged.

For additional information, contact Dennis Schwartz (515-281-5754)

Sioux City - Nonfarm Employment



Waterloo/Cedar Falls - Nonfarm Employment



[CLICK TABLE FOR DATA](#)

Waterloo/Cedar Falls MSA Employment	
Total Nonfarm 15p	88,300
Total Nonfarm 14	89,300
% Change 1 Yr	-1.12%
Noteworthy Expanding and Contracting Industries	
Loc Gov Education	2.17%
State Government	-9.68%

p - preliminary data

The Waterloo/Cedar Falls metropolitan statistical area's total nonfarm employment is down 1,600 jobs from the previous month and stands at 88,300. The only two sectors not affected by the jobs losses were leisure and hospitality and financial activities. The bulk of the jobs pared were education related with a loss of 600 in local government and 300 in educational and health services.

Over the year, employment is down 1,000 jobs, with manufacturing experiencing the greatest loss (-700). Other sectors paring jobs include; trade, transportation and warehousing (-400), and government (-300).

For additional information, contact Dennis Schwartz (515-281-5754)

LINKS TO ADDITIONAL INFORMATION

Click on a link below to visit web page

Worker Adjustment & Retraining Notification Act (WARN)

U.S. Bureau of Labor Statistics

Unemployment Insurance Benefit Payments

Consumer Price Index (CPI)

Unemployment Insurance Benefit Paid by County

Employment Statistics for Canada

Current Employment Statistics

Each month the **Current Employment Statistics** program surveys about 143,000 businesses and government agencies, representing approximately 588,000 individual worksites, in order to provide detailed industry data on employment, hours, and earnings of workers on nonfarm payrolls for all 50 States, the District of Columbia, Puerto Rico, the Virgin Islands, and about 450 metropolitan areas and divisions.

Contact Information

Iowa Workforce Development
 Employment Statistics Bureau
 1000 East Grand Avenue
 Des Moines, IA 50319-0209
 Tel: 515-281-8515
 Tel: 800-532-9793
 Fax: 515-281-8195
 Email: trends@iowa.gov
 www.iowaworkforce.org

Equal opportunity employer/program. Auxiliary aids and services are available upon request to individuals with disabilities. For deaf and hard of hearing, use Relay 711