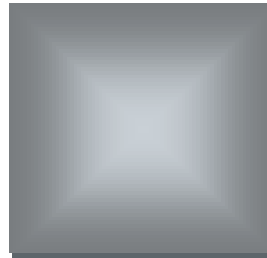


2016 IOWA INDUSTRY PROFILE

AGRICULTURE, FORESTRY, FISHING & HUNTING

IOWA WORKFORCE DEVELOPMENT



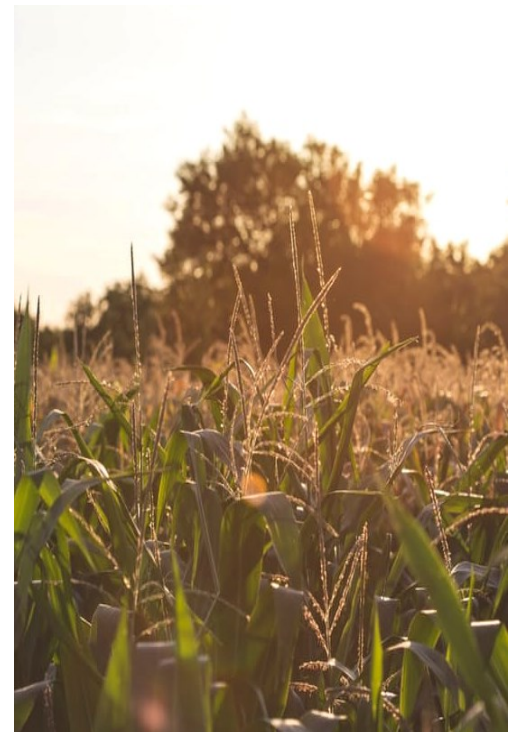
Executive Summary

In 2015, the **Agriculture, Forestry, Fishing and Hunting** sector comprised 1.3 percent of all covered public and private employment in Iowa. This sector reported an average annual wage of \$37,929 for 2015, which was 14.0 percent lower than the statewide average of \$44,094 for all industries.

This sector increased employment by 36.4 percent between 2006 and 2015, adding 5,155 jobs in that time. While many industries lost jobs during the recession, employment in this sector grew every year in the last decade.

Animal production, the largest subsector within this industry, employed 10,961 workers, or 56.8 percent of all sector employment. **Crop production** employed 4,866 workers in 2015, a substantial portion of sector employment in an industry that has become more reliant on machinery than labor. However, this sector still employs a large number of seasonal workers.

The employment in the Agriculture, Forestry, Fishing and Hunting sector does not include self-employed farmers and operations that have less than 10 workers or that have a payroll of less than \$20,000 per quarter.





AGRICULTURE, FORESTRY, FISHING, AND HUNTING IOWA INDUSTRY PROFILE

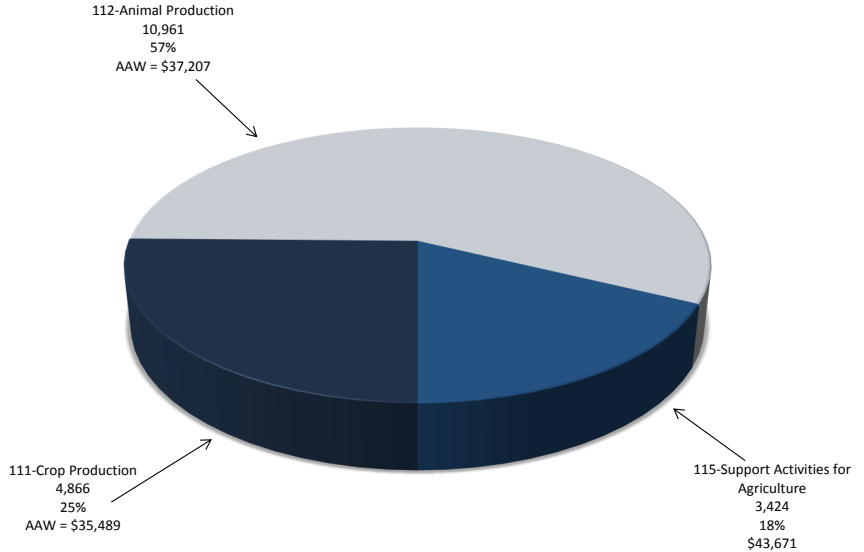
What is Agriculture, Forestry, Fishing, and Hunting?

This sector comprises establishments primarily engaged in growing crops, raising animals, harvesting timber, and harvesting fish and other animals from a farm, ranch, or their natural habitats.

The sector distinguishes two basic activities: agricultural production and agricultural support activities. Agricultural production includes establishments performing the complete farm or ranch operation, such as farm owner-operators, tenant farm operators, and sharecroppers. Agricultural support activities include establishments that perform one or more activities associated with farm operation, such as soil preparation, planting, harvesting, and management, on a contract or fee basis.

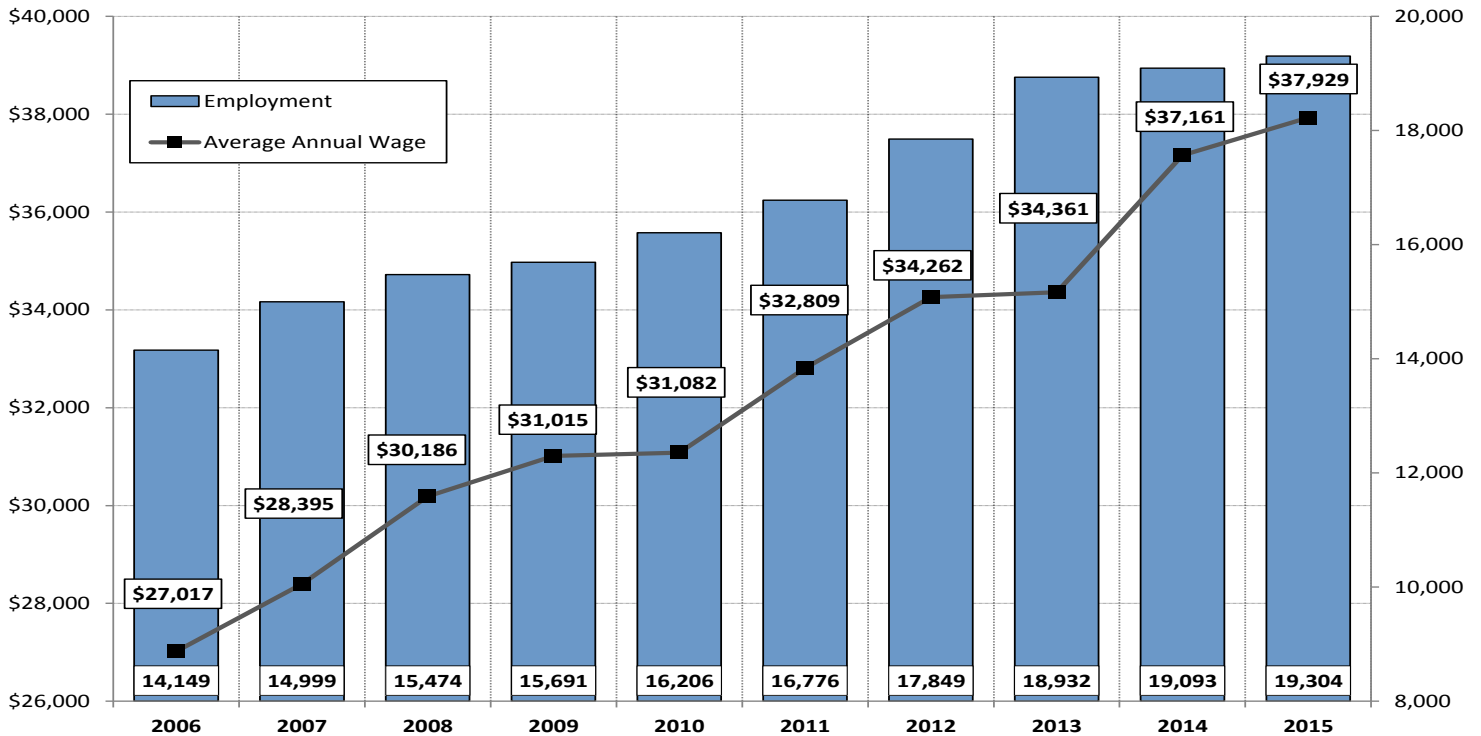
Source: www.bls.gov/cew/bls_naics/bls_naics_app.htm

2015 Industry Breakout by Employment in Iowa Agriculture, Fishing, Forestry, & Hunting NAICS Industry Coding Percentage Employed and Average Annual Wage by Sub-Sector



Source: Quarterly Census of Employment and Wages (QCEW), Iowa Workforce Development

2006-2015 Employment in Agriculture, Fishing, Forestry, & Hunting in Iowa



Source: Quarterly Census of Employment and Wages (QCEW), Iowa Workforce Development

AGRICULTURE, FORESTRY, FISHING, AND HUNTING IOWA INDUSTRY PROFILE



Examples of Major Agriculture, Forestry, Fishing, & Hunting Employers

Name of Company	Industry
Centrum Valley Farms	Poultry and Egg Production
Hy-Line International	Poultry and Egg Production
Red Oak Greenhouse	Greenhouse, Nursery, and Floriculture Production
Reicks View Farms	Hog and Pig Farming
Rose Acre Farms Inc	Poultry and Egg Production

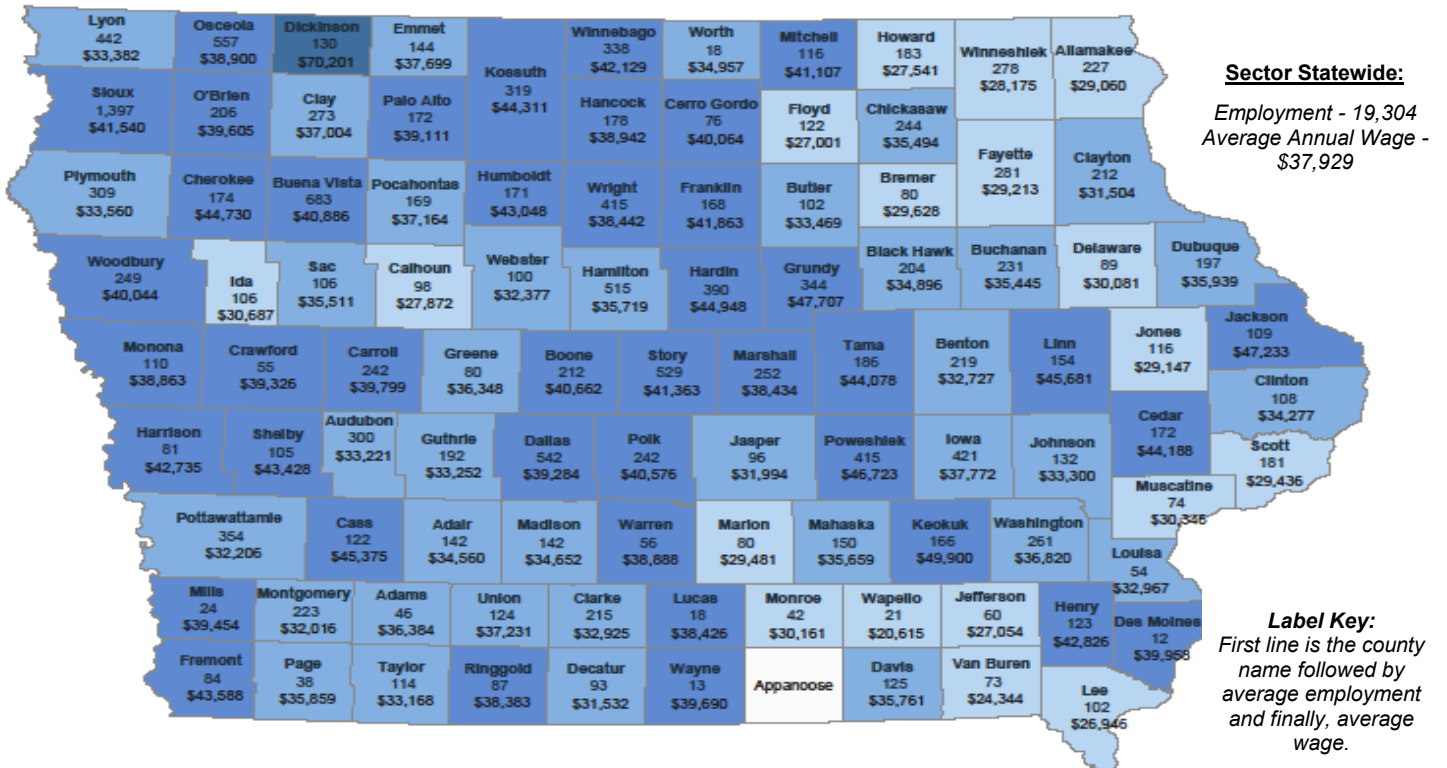
Source: www.iowaworkforcedevelopment.gov/employer-database

Employers

In 2015, there were 2,459 **agriculture, forestry, fishing, and hunting industry** locations across Iowa. **Animal production** has the most establishments in Iowa with 1,017 followed closely by **Crop production** with 984 locations across the state. **Support activities for agriculture and forestry** is third with 435 establishments.

The employers listed to the left are classified in the sub-sector that reflects their primary industry, although each company may be engaged in other economic activities.

2015 Covered Employment in Agriculture, Forestry, Fishing, & Hunting by County



Sector Statewide:
Employment - 19,304
Average Annual Wage - \$37,929

Label Key:
First line is the county name followed by average employment and finally, average wage.



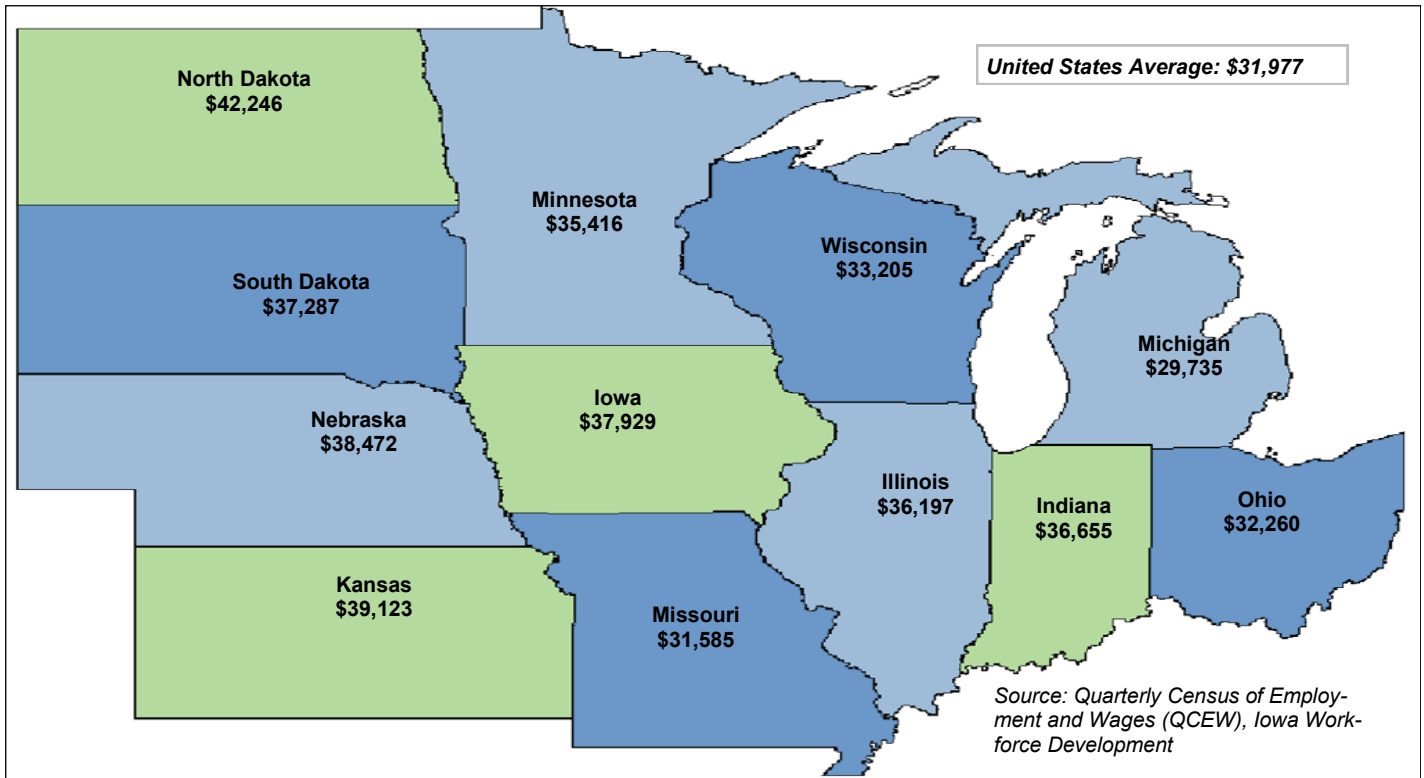
Source: Quarterly Census of Employment and Wages (QCEW), Iowa Workforce Development



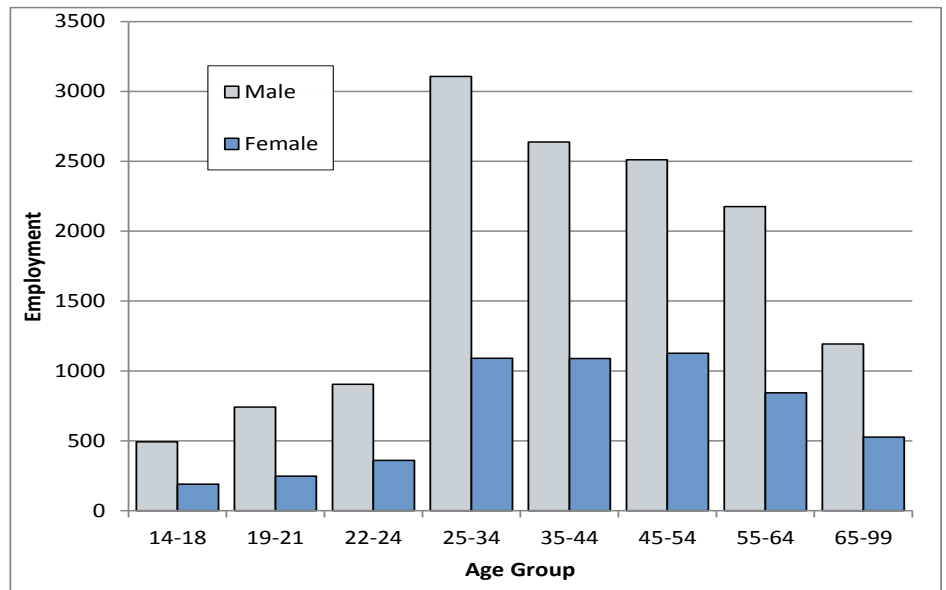
AGRICULTURE, FORESTRY, FISHING & HUNTING IOWA INDUSTRY PROFILE

2015 Average Annual Wage for Covered Employment in Agriculture, Forestry, Fishing, & Hunting

State Comparisons by Private Ownership



Industry Distribution by Age and Gender 4th Qtr. 2015



Source: Local Employment Dynamics, Iowa Workforce Development and U.S. Census Bureau
<http://lehd.did.census.gov>

Contact Information

Iowa Workforce Development, Employment Statistics Bureau

1000 E Grand Ave
Des Moines, IA 50319
800-532-1249
Fax: 515-281-8195
lwd.lmi@iwd.iowa.gov
www.iowaworkforcedevelopment.gov

*Equal opportunity employer/program.
Auxiliary aids and services are available
upon request to individuals with disabilities.*

TTY 515-281-4748
1-800-831-1399

