

**Little Lick Creek Watershed  
1323-011  
Final Report**

**Sponsored by the  
Van Buren Soil and Water Conservation District**

Report prepared by Jerry Neppel

Introduction

Little Lick Creek is a 14,600 acre priority sub watershed located in Van Buren County. It is one of three sub watersheds that make up the greater 51,810 acre Lick Creek Watershed. It is not a 303(d) listed waterbody. However land use activities in this sub-watershed contribute to the deteriorated condition of the Des Moines River and Gulf of Mexico. Little Lick Creek watershed is intensively row-cropped with a predominate rotation of corn and soybeans. Significant soil erosion from these acres causes non-point source pollution to the Creek. Excessive soil loss and sedimentation chokes vital spawning habitat and feeding areas, impacting fish and other aquatic wildlife. The nutrients that are lost to the Des Moines River and contributing to the Gulf Hypoxic impairment stem from the phosphorous that is bound to the eroded soil as well as nitrogen loss which is inherent in the lack of active roots during the fall and spring seasons. The Van Buren SWCD’s goal of this project is to install 39% of planned grade stabilization structures, 20% of planned sediment basins and 14% of planned cover crops in the watershed. The SWCD will prioritize state cost share (IFIP) dollars for terraces which will help achieve 75% of its goal over this three-year project. Additional funding partners include landowners, NRCS-EQIP, SIDCA, Van Buren County, and Pheasants Forever. A total of 830 priority acres will be treated and 6,112 tons of sediment and 7,945 pounds of phosphorous will be trapped by this project. Attachments 1 and 2 show the location of Little Lick Creek within Van Buren County and nearby towns.

Financial Accountability

Table 1 summarizes how funds awarded by the WIRB were utilized in the project.

**Table 1: Watershed Improvement Funds**

<b>Grant Agreement Budget Line Item</b>	<b>Total Funds Approved (\$)</b>	<b>Total Funds Approved—Amended (\$)</b>	<b>Total Funds Expended (\$)</b>	<b>Available Funds (\$)</b>
Salary and Benefits	78,812	28,812	16,838.13	11,973.87
Information and Outreach	2,250	2,250	1,461.42	788.58
Grade Stabilization Structures	99,000	169,000	116,347.42	52,652.58
Water and Sediment Control Basins	43,200	23,200	13,801.77	9,398.23
Cover Crops	47,500	47,500	1,325.00	46,175.00
<b>Totals</b>	<b>\$270,762</b>	<b>\$270,762</b>	<b>\$149,773.74</b>	<b>\$120,988.26</b>

Table 2 summarizes contributions from all of the funding sources and partners.

**Table 2: Total Project Funding**

Funding Source	Approved Application Budget (\$)	Approved Application— Amended (\$)	Actual (\$)
WIRB	270,762	270,762	149,773.74
IFIP	14,000	14,000	54,647.93
SIDCA	37,500	37,500	-0-
Van Buren County	12,500	12,500	-0-
EQIP	9,000	9,000	39,564.31
Pheasants Forever	600	600	-0-
Landowners	183,100	198,634	235,077.18
<b>Totals</b>	<b>\$527,462</b>	<b>\$542,996</b>	<b>\$479,063.16</b>

Watershed Improvement Fund contribution: Approved application budget: 51%  
 Actual: 31%

Environmental Accountability

Environmental goals for this project were to reduce sediment delivery to Little Lick Creek by 6,112 tons per year and reduce phosphorus delivery by 7,945 pounds per year. With the practices installed, an estimated 3,815 tons of sediment and 4,969 pounds of phosphorus are not delivered to Little Lick Creek per year. These reductions are approximately 62% of the established goal. These pollutant load reduction estimated were calculated using the Pollutant Load Reduction Calculator developed by Iowa Department of Natural Resources and the Iowa Department of Agriculture and Land Stewardship

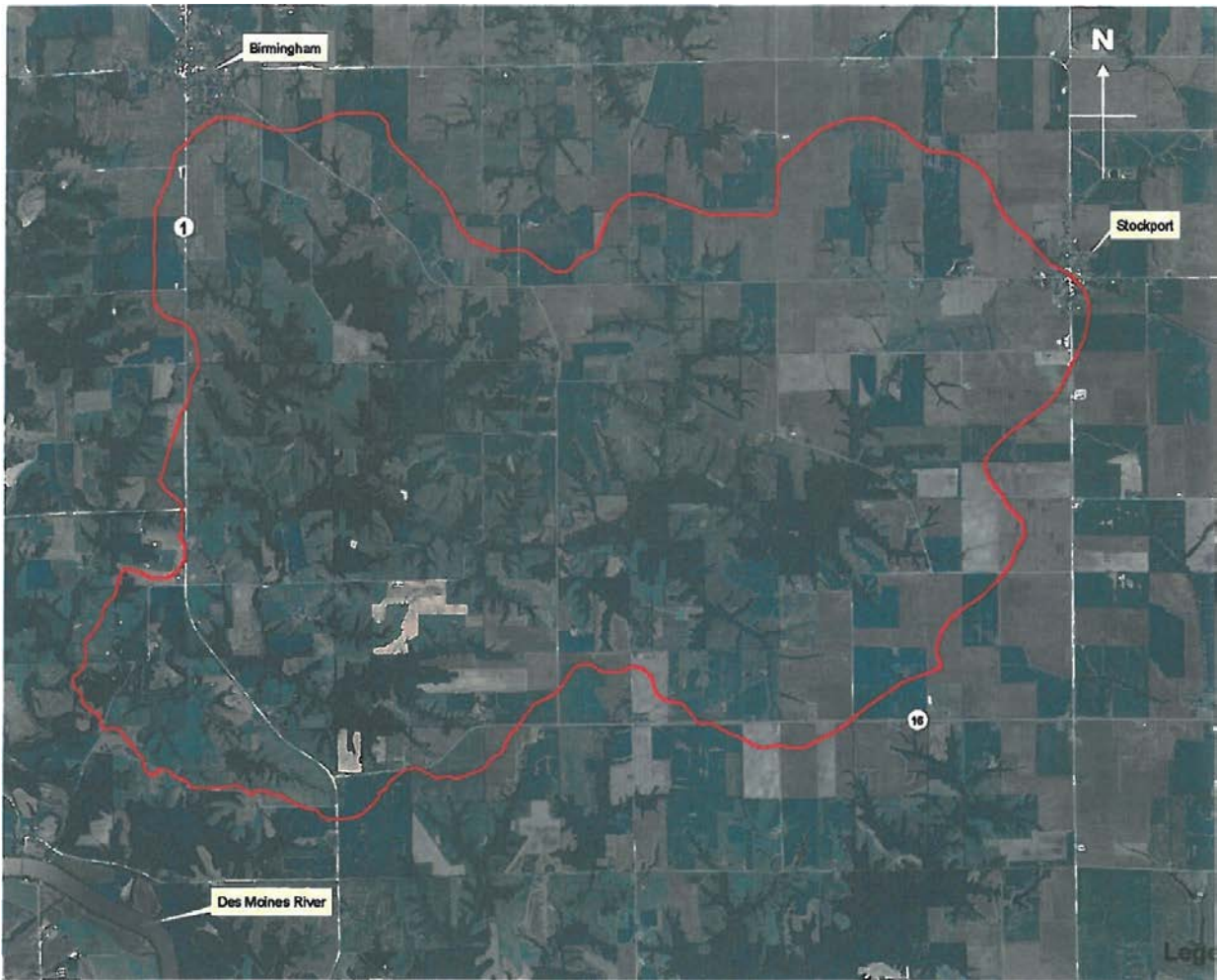
**Table 3: Practices**

Practice or Activity	Unit	Approved Amended Application Goal	Accomplishments	Percent Completion %
Grade Stabilization Structures	Number	9	7	78
Water and Sediment Control Basins	Number	3	6	200
Terraces	Feet	6,000	8,400	140
Wildlife Habitat	Acres	10	-0-	0
Cover Crops	Acres	1,000	53	5

Program Accountability

An information, education and outreach program was developed and implemented. A full-color information brochure describing the watershed project objectives and available resources was developed and mailed to all watershed residents. Two press releases was also distributed to the media. Eight creek signs were placed at major road bridges that crossed the creek as well as 10 watershed boundary signs designating entering/leaving Little Lick Creek on all state and paved county roads in the watershed. One hundred twenty-three landowner and producer contacts and on-farm visits were completed

Attachment 1. Little Lick Creek Watershed



Attachment 2. Lick Creek Watershed and Sub Watersheds

