

Iowa Acute Disease Monthly Update

Center for Acute Disease Epidemiology
January
2018



Iowa Department of Public Health

TABLE OF CONTENTS

Introduction.....	3
Iowa County Boundaries and Population.....	4
December Case Counts	5
YTD Case Counts – Counties A-J.....	6
YTD Case Counts – Counties K-W	7
Campylobacteriosis Summary.....	8
Cryptosporidiosis Summary.....	9
E. coli (STEC) Summary.....	10
Mumps Summary.....	11
Pertussis Summary.....	12
Salmonellosis Summary.....	13
Shigellosis Summary.....	14
Center for Acute Disease Epidemiology (CADE) Staff.....	15

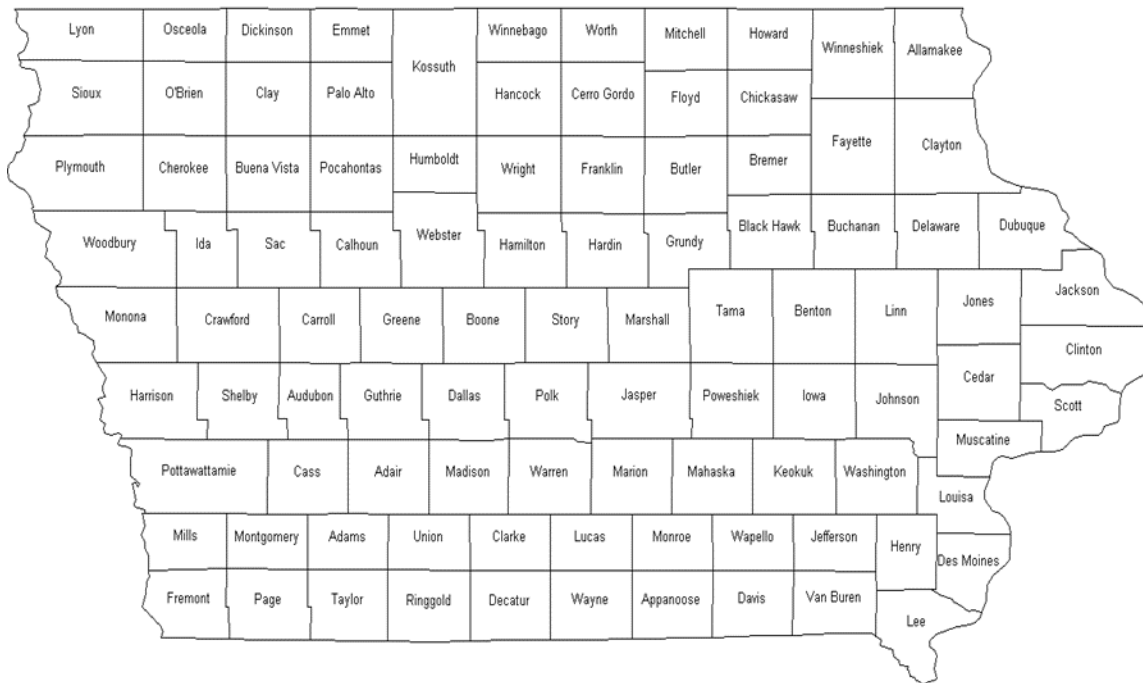
INTRODUCTION

The Center for Acute Disease Epidemiology (CADE) uses the most recent Council of State and Territorial Epidemiologists (CSTE) / Centers for Disease Control and Prevention (CDC) case definitions found on the [National Notifiable Disease Surveillance System \(NNDSS\)](#) page. These definitions are used to classify the case as confirmed, probable, suspect, not a case, or awaiting more information. **Only confirmed and probable cases meeting the CSTE/CDC case definitions are included in official case counts.** CADE began using the suspect case definition as a final classification on Jan 1, 2017. Suspect cases are not included in the official case count but only meant to better estimate burden of disease. Any counts in this report from dates prior to Jan 1, 2017 do not include suspect cases.

Disease case counts were compiled from the Iowa Disease Surveillance System (IDSS). Data are provisional and subject to monthly reporting variation.

Rates were calculated using the 2010 census population for the State of Iowa.

Iowa County Boundaries and Population



IOWA POPULATION					3,046,355
2010 CENSUS					
ADAIR	7,472	FLOYD	16,092	MONONA	9,121
ADAMS	3,894	FRANKLIN	10,548	MONROE	8,012
ALLAMAKEE	14,169	FREMONT	7,080	MONTGOMERY	10,424
APPANOOSE	12,692	GREENE	9,139	MUSCATINE	42,836
AUDUBON	5,873	GRUNDY	12,314	O'BRIEN	14,044
BENTON	25,699	GUTHRIE	10,687	OSCEOLA	6,211
BLACK HAWK	132,546	HAMILTON	15,312	PAGE	15,713
BOONE	26,364	HANCOCK	11,094	PALO ALTO	9,185
BREMER	24,624	HARDIN	17,441	PLYMOUTH	24,957
BUCHANAN	20,976	HARRISON	14,431	POCAHONTAS	7,154
BUENA VISTA	20,567	HENRY	20,222	POLK	451,677
BUTLER	15,021	HOWARD	9,526	POTTAWATTAMIE	92,728
CALHOUN	9,926	HUMBOLDT	9,688	POWESHIEK	18,601
CARROLL	20,589	IDA	7,141	RINGGOLD	5,072
CASS	13,598	IOWA	16,330	SAC	10,071
CEDAR	18,393	JACKSON	19,587	SCOTT	170,385
CERRO GORDO	43,575	JASPER	36,641	SHELBY	11,961
CHEROKEE	11,945	JEFFERSON	16,810	SIOUX	34,547
CHICKASAW	12,321	JOHNSON	139,155	STORY	92,406
CLARKE	9,325	JONES	20,611	TAMA	17,576
CLAY	16,491	KEOKUK	10,329	TAYLOR	6,161
CLAYTON	17,773	KOSSUTH	15,321	UNION	12,583
CLINTON	48,420	LEE	35,682	VAN BUREN	7,436
CRAWFORD	17,434	LINN	216,111	WAPELLO	35,391
DALLAS	74,641	LOUISA	11,282	WARREN	47,336
DAVIS	8,791	LUCAS	8,746	WASHINGTON	22,015
DECATUR	8,136	LYON	11,712	WAYNE	6,402
DELAWARE	17,534	MADISON	15,448	WEBSTER	37,044
DES MOINES	40,480	MAHASKA	22,417	WINNEBAGO	10,554
DICKINSON	16,955	MARION	33,252	WINNESHIEK	20,994
DUBUQUE	95,697	MARSHALL	40,994	WOODBURY	102,130
EMMET	9,996	MILLS	14,896	WORTH	7,541
FAYETTE	20,502	MITCHELL	10,709	WRIGHT	12,972

Case Counts December 2017

Confirmed, Probable, and Suspect* Cases

Note: Only counties with cases in December are displayed in the table.

	Campylobacteriosis	CRE Citrobacter	CRE Enterobacter	CRE Escherichia coli	Cryptosporidiosis	E. coli (STEC)	Giardiasis	Hepatitis B chronic	Legionellosis	Lyme	Mumps	Pertussis	Salmonellosis	Shigellosis	Total		Campylobacteriosis	CRE Citrobacter	CRE Enterobacter	CRE Escherichia coli	Cryptosporidiosis	E. coli (STEC)	Giardiasis	Hepatitis B chronic	Legionellosis	Lyme	Mumps	Pertussis	Salmonellosis	Shigellosis	Total
Allamakee	2														2	Page	1														1
Appanoose	1														1	Palo Alto	1											1		2	
Benton	2										1				3	Plymouth				1										1	
Black Hawk													2		2	Pocahontas											1		1		
Boone	1														1	Polk	8			1	2		2				7		20		
Bremer	1														1	Pottawattamie	1												1		
Buchanan	1	1													2	Ringgold	1												1		
Buena Vista	2														2	Sac	1				1								2		
Carroll	1														1	Scott	1	1	1	1	2					4	1	7	18		
Cass						1									1	Sioux												1	1		
Cedar	1												1		2	Story	1			1							1		3		
Cerro Gordo	1													1	1	Union	1												1		
Cherokee													1		1	Van Buren	2												2		
Chickasaw			1												1	Wapello	3			1		1					1		6		
Clarke	1														1	Webster	1				1						2		4		
Clay	1														1	Winneshiekie								1					1		
Clinton	1														1	Woodbury	1												1		
Crawford	2														2	Wright		1											1		
Dallas	2					1									3	Total	68	1	6	2	7	10	11	5	1	1	4	6	27	8	157
Davis	1														1																
Dickinson	1														1																
Dubuque	3							1					1		5																
Fayette													1		1																
Greene	1					1									2																
Guthrie							1				1	2			4																
Hancock			1												1																
Jasper	2														2																
Jefferson	1														1																
Johnson	3										1		3		7																
Jones	1		1												2																
Keokuk				1											1																
Kossuth	1														1																
Lee				1	1										2																
Linn	4	1		1	2	4	2				1		3		18																
Lyon				1											1																
Mahaska													1		1																
Marion						1									1																
Marshall	1														1																
Mitchell	2														2																
Muscatine	2		1												3																
O'Brien	2		1												3																

*CADE began using the suspect case definition as a final classification on Jan 1, 2017. Suspect cases are not included in the official case count but only meant to better estimate burden of disease. Any counts in this report from dates prior to Jan 1, 2017 do not include suspect cases.

Case Counts for January 1, 2017 – December 31, 2017

(Counties A-J)

Confirmed, Probable, and Suspect* Cases

	Babesiosis	Campylobacteriosis	Chikungunya	CRE <i>Citrobacter</i>	CRE <i>Enterobacter</i>	CRE <i>Escherichia coli</i>	CRE <i>Klebsiella</i>	Cryptosporidiosis	Cyclosporiasis	Dengue	<i>E. coli</i> (STEC)	Ehrlichiosis/Anaplasmosis	Giardiasis	<i>Haemophilus influenzae</i> type B (invasive)	Hansen's disease	Hepatitis A	Hepatitis B acute	Hepatitis B chronic	Hepatitis D	Hepatitis E	HUS	Laerosse	Legionellosis	Listeria	Lyme	Malaria	Mumps	<i>N. meningitidis</i> (invasive)	Pertussis	Q Fever Acute	Q Fever Chronic	Rocky Mountain spotted fever	Salmonellosis	Shigellosis	Tetanus	Tularemia	West Nile virus	Total		
Adair		2						1																															9	
Adams								1			1																													2
Allamakee		11						10			1	4	3												3									8					1	41
Appanoose		8			1			4			1							2											5			1	3						25	
Audubon		4						2			2																							2						10
Benton		17			1			10			6	1											1			9		6						4	1					56
Black Hawk		6	1					4			2		8					14	1					3		8		14	1	14				30	1					107
Boone		13			1	1		3	1		4	4	1									1				2								10						43
Bremer		3									1	2						1								1		3	1					2						14
Buchanan		9			2			5			4		5	1																				11						38
Buena Vista		20		1				7			1							1				1				1								4	7			1		44
Butler		1						1																2				1			1			1						7
Calhoun		15							1		4																							1	4	1				26
Carroll		10						4			5	2																												33
Cass		4									3	1					1																							15
Cedar		6						7			4															4														30
Cerro Gordo		17		1	3			4			4	1	2					4						1	1	2				1										48
Cherokee		2						1			4							1							1	1														19
Chickasaw	1	6			1			1			2																													16
Clarke		9						2			2	1																												19
Clay		4			1			3			2							1																						12
Clayton		10			3			16	1		4	1										1				17		6												67
Clinton		24			1	1	3	3			3	1						2										1												53
Crawford		10						1			4	1																												20
Dallas		18		2	4		1	23		1	10	1	7				1	4								3										2	23	6		113
Davis		1						1									1																							7
Decatur		1						2			1																													6
Delaware		15			1			8			3	2														3		6	1											46
Des Moines		10						8			8	1					2	1									1													44
Dickinson		7						7			1	1						1																						22
Dubuque		44			5	2	2	28	1		26	2	10					4									2	36	16											206
Emmet		1			1			1			1	1															1													8
Fayette		2				3		1			2	3															3													22
Floyd		15																																						25
Franklin		3		1							1		1																1											10
Fremont		2																																						4
Greene		9						2			5	1																												20
Grundy																										2		2												8
Guthrie		8			1			1			4	1																2		2										23
Hamilton		4						2			3	1						1										1												18
Hancock		4				1	1	4			1																													15
Hardin		17									1	1	1														1													24
Harrison		4									4	1	1						1									1	2											16
Henry		5									1	1																												13
Howard		6						4																			1													13
Humboldt		4						1					1																											8
Ida		1						1																																3
Iowa		7						2			3	1	1																											17
Jackson		14			1		1	6			9	3															7													50
Jasper		18				2	1	4			5	2					1		2								1	2	1											51
Jefferson		3						4	1			1	3																											16
Johnson		43		1		2		12	4		22	1	16					18																						240
Jones		13			2	2		5			7		3					1																						41

*CADE began using the suspect case definition as a final classification on Jan 1, 2017. Suspect cases are not included in the official case count but only meant to better estimate burden of disease. Any counts in this report from dates prior to Jan 1, 2017 do not include suspect cases.

Case Counts for January 1, 2017 – December 31, 2017 (Counties K-W)

Confirmed, Probable, and Suspect* Cases

	Babesiosis	Campylobacteriosis	Chikungunya	CRE <i>Citrobacter</i>	CRE <i>Enterobacter</i>	CRE <i>Escherichia coli</i>	CRE <i>Klebsiella</i>	Cryptosporidiosis	Cyclosporiasis	Dengue	<i>E. coli</i> (STEC)	Ehrlichiosis/Anaplasmosis	Giardiasis	<i>Haemophilus influenzae</i> type B (invasive)	Hansen's disease	Hepatitis A	Hepatitis B acute	Hepatitis B chronic	Hepatitis D	Hepatitis E	HUS	Lacrosse	Legionellosis	Listeria	Lyme	Malaria	Mumps	<i>N. meningitidis</i> (invasive)	Pertussis	Q Fever Acute	Q Fever Chronic	Rocky Mountain spotted fever	Salmonellosis	Shigellosis	Tetanus	Tularemia	West Nile virus	Total			
Keokuk		6			1	1		5																																21	
Kossuth		4			2			1			4		1																						2						14
Lee		4			3	3	10	5			2	1	2																						4	3				37	
Linn		61		4	4		1	40	1		21	1	23					21							33	1	12		7					55	5			1	291		
Louisa		3									1		1					2																	1					8	
Lucas		9						3			7	1	1										1																	22	
Lyon		6						6			8		1								1														9				2	33	
Madison		15						7			6		2														1										1			32	
Mahaska		11						2	2		2		2											1												8				28	
Marion		7						8			2							1							1				3					7						29	
Marshall		9			1	1	2	1	3		3	1	1					3						1	1	2		1						8	1					39	
Mills		3				1		5			3													1											4	3				20	
Mitchell		14			1		1	9			11		3																						2					41	
Monona		1											1																											5	
Monroe		3			1			3			3																		2						2					14	
Montgomery		3		1		2												1																						7	
Muscatine		15			1		1	3	1	1	11		3				1	1	3		1			1		2			1					7	24					77	
O'Brien		7			2			1			2		2					2																	7					21	
Osceola		3						1																											1				1	6	
Page		6						1			2		1																						5					15	
Palo Alto		9									2							1																		1				13	
Plymouth		7			1			9			6		4					1										1								1				30	
Pocahontas		8						2			7																									4				21	
Polk		141		1	8	2	1	56	6	1	55		50			2	4	76	3				3	18	5	8		36	1		2	100	25		1	1		606			
Pottawattamie		22			1	1		4	1	1	7	1	8					8					4	3				4				1	18	9				1	94		
Poweshiek		5						1			2													1											2				1	13	
Ringgold		2						3			1														1															7	
Sac		12						4			4		3																											28	
Scott		32			3	2	2	9	1		13	1	13	1		1	2	13					4	15	1	2	1	40						25	45				226		
Shelby		9						7			4						1	1				1							1						9					33	
Sioux		26						37	2		5		9					1							1				1						18	2				102	
Story	1	37			2	1		16	2		6	3	14					6					1	5	3	15								20	6			1	139		
Tama		3				1		3			2														2		1								8	3				23	
Taylor								1			1										1																			3	
Union		9						5			6		1										1												2					24	
Van Buren		7				1		2			1																		1						1					13	
Wapello		21						4			4							7	1						1	1			5	1					3					48	
Warren	1	17				1	1	8			5		9					2										4	2				1	16	1		1		69		
Washington		9						2			2		1																3						4					21	
Wayne		1																																		2				4	
Webster		8						6		1	5		3													2		1		1					9					36	
Winnebago		2						1				1													1											2				7	
Winneshie		15			1			15	1		2	1													8		11								6	1				62	
Woodbury		17			2	5	1	1	18		1	5	1	7		1		1	13						1			4				1	17	3			1	100			
Worth		5				1		5			3																													14	
Wright		7				1		1			1																									4	4			18	
Total	3	1111	1	16	69	29	26	537	29	6	420	28	257	3	1	8	11	226	6	2	7	1	35	3	257	18	130	2	181	14	1	15	719	168	1	4	12	4357			

*CADE began using the suspect case definition as a final classification on Jan 1, 2017. Suspect cases are not included in the official case count but only meant to better estimate burden of disease. Any counts in this report from dates prior to Jan 1, 2017 do not include suspect cases.

Campylobacteriosis Summary

January 1, 2017 – December 31, 2017

68

Statewide campylobacteriosis cases in December (confirmed and probable)

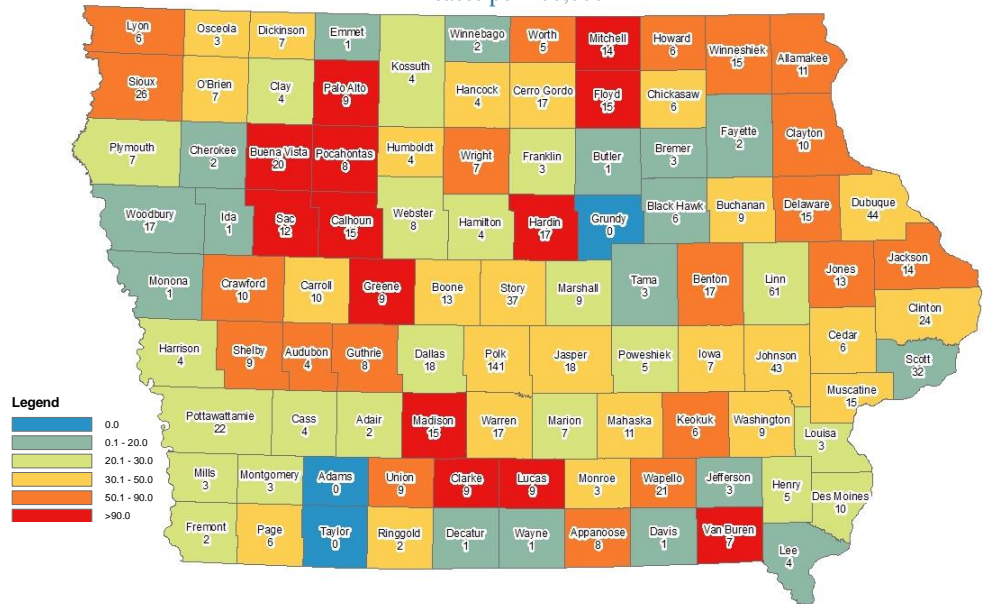
1111

Statewide campylobacteriosis cases in the past 12 months (confirmed and probable)

717

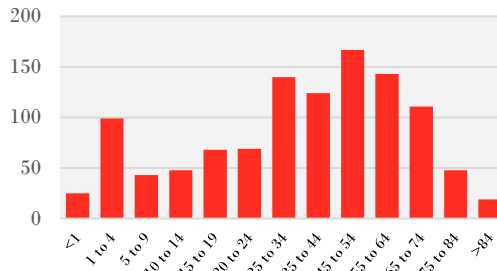
Average statewide campylobacteriosis cases in the previous 5 years for the same time period (confirmed and probable)

12 Month county rates of campylobacteriosis cases per 100,000

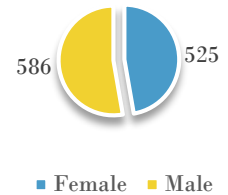


Note that rates based on <20 cases are not reliable and should be interpreted with caution

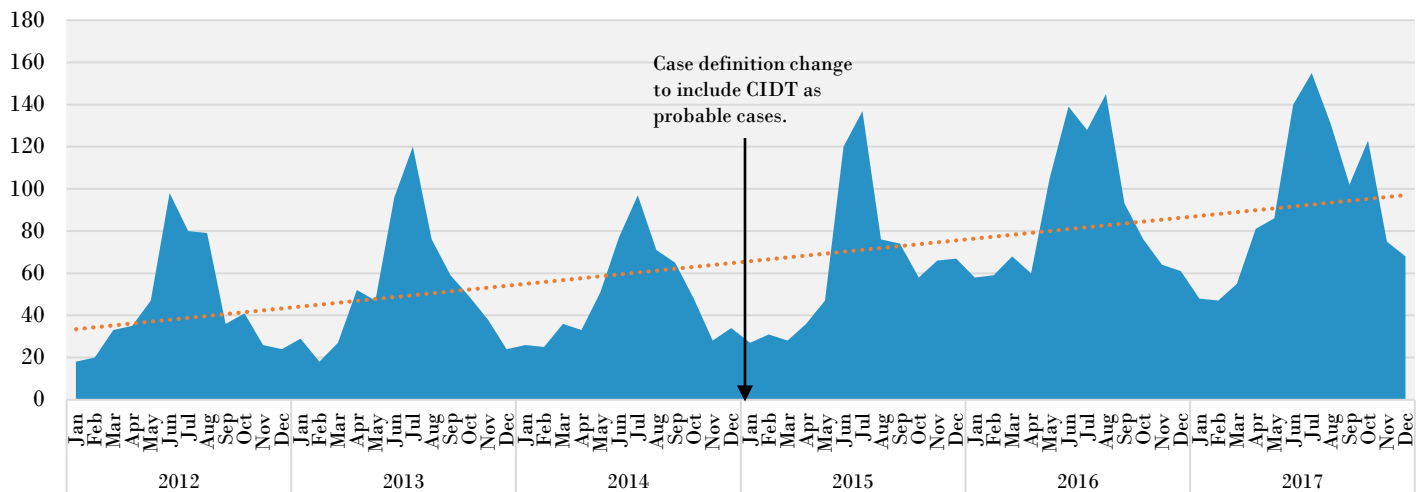
Campylobacteriosis cases by age past 12 months



Campylobacteriosis cases by gender past 12 months



Reported campylobacteriosis cases by date of onset or first lab result



Cryptosporidiosis Summary

January 1, 2017 – December 31, 2017

7

Statewide cryptosporidiosis cases in December (confirmed and probable)

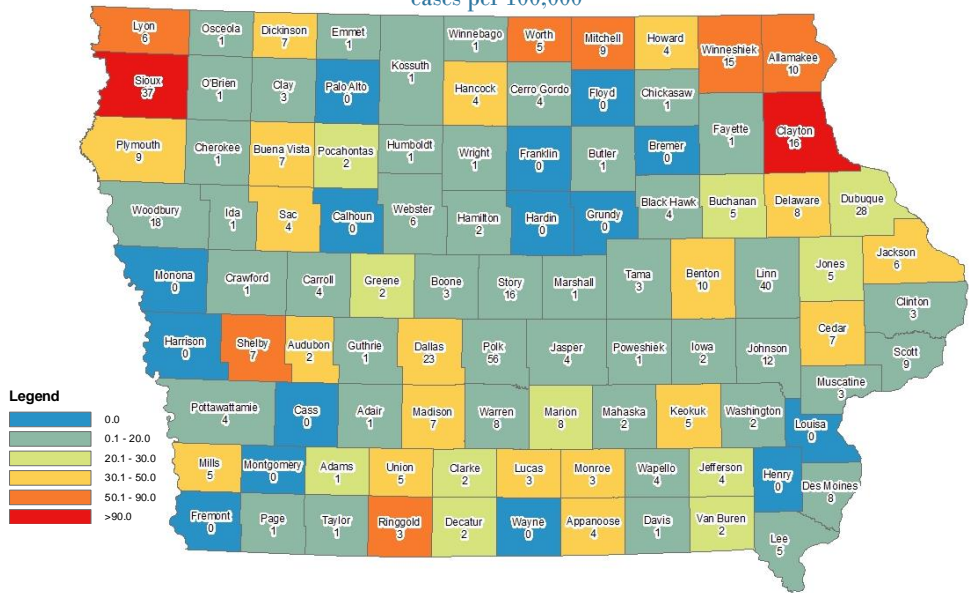
537

Statewide cryptosporidiosis cases in the past 12 months (confirmed and probable)

647

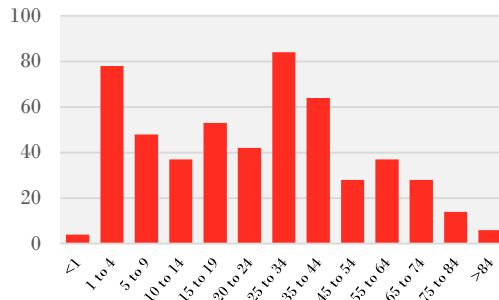
Average statewide cryptosporidiosis cases in the previous 5 years for the same time period (confirmed and probable)

12 Month county rates of cryptosporidiosis cases per 100,000

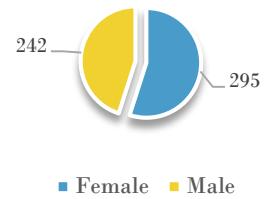


Note that rates based on <20 cases are not reliable and should be interpreted with caution

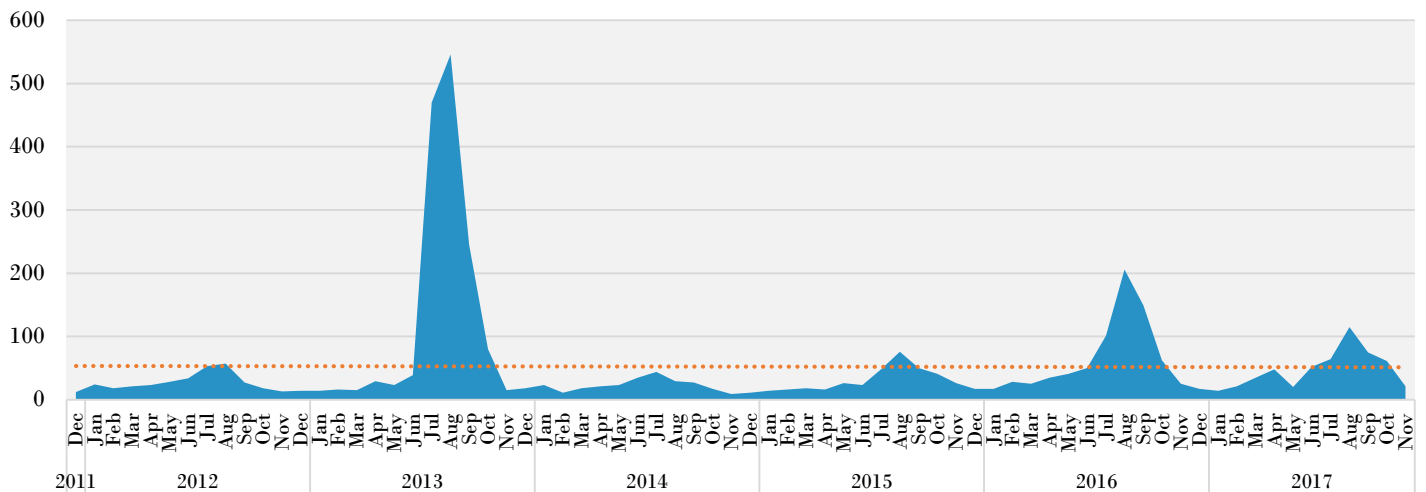
Cryptosporidiosis cases by age past 12 months



Cryptosporidiosis cases by gender past 12 months



Reported cryptosporidiosis cases by date of onset or first lab result



E. coli (STEC) Summary

January 1, 2017 – December 31, 2017

10

Statewide E. coli (STEC) cases in December (confirmed, probable, and suspect*)

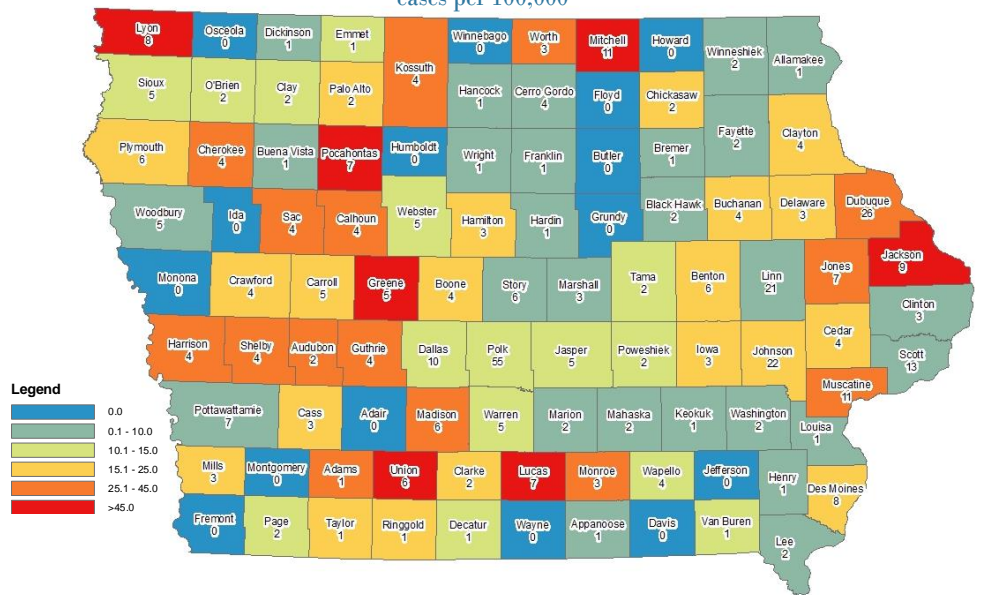
420

Statewide E. coli (STEC) cases in the past 12 months (confirmed and probable)

208

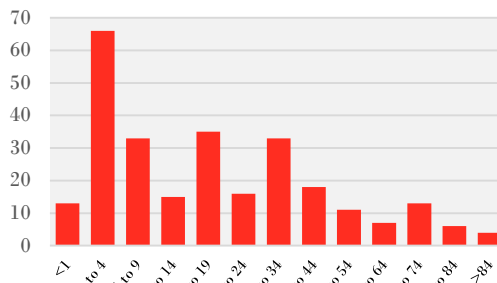
Average statewide E. coli (STEC) cases in the previous 5 years for the same time period (confirmed and probable)

12 Month county rates of E. coli (STEC) cases per 100,000

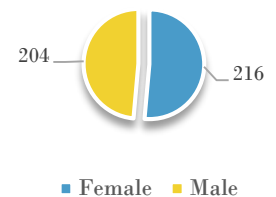


Note that rates based on <20 cases are not reliable and should be interpreted with caution

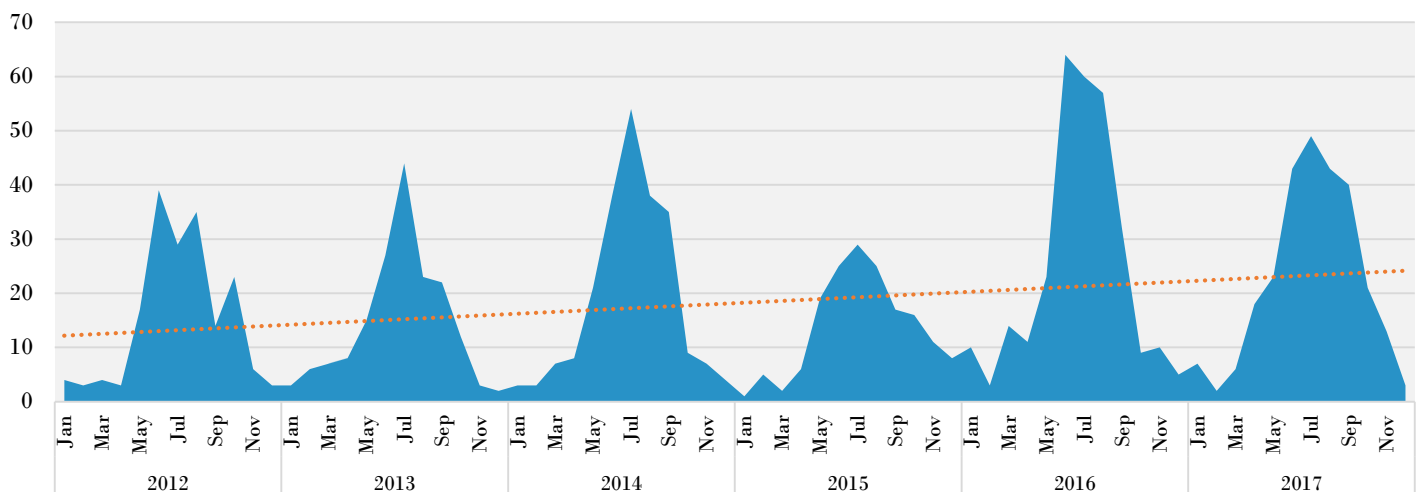
E. coli (STEC) cases by age past 12 months



E. coli (STEC) cases by gender past 12 months



Reported E. coli (STEC) cases by date of onset or first lab result



*CADE began using the suspect case definition as a final classification on Jan 1, 2017. Suspect cases are not included in the official case count but only meant to better estimate burden of disease. Any counts in this report from dates prior to Jan 1, 2017 do not include suspect cases.

Mumps Summary

January 1, 2017 – December 31, 2017

4

Statewide mumps cases in December (confirmed, probable, and suspect*)

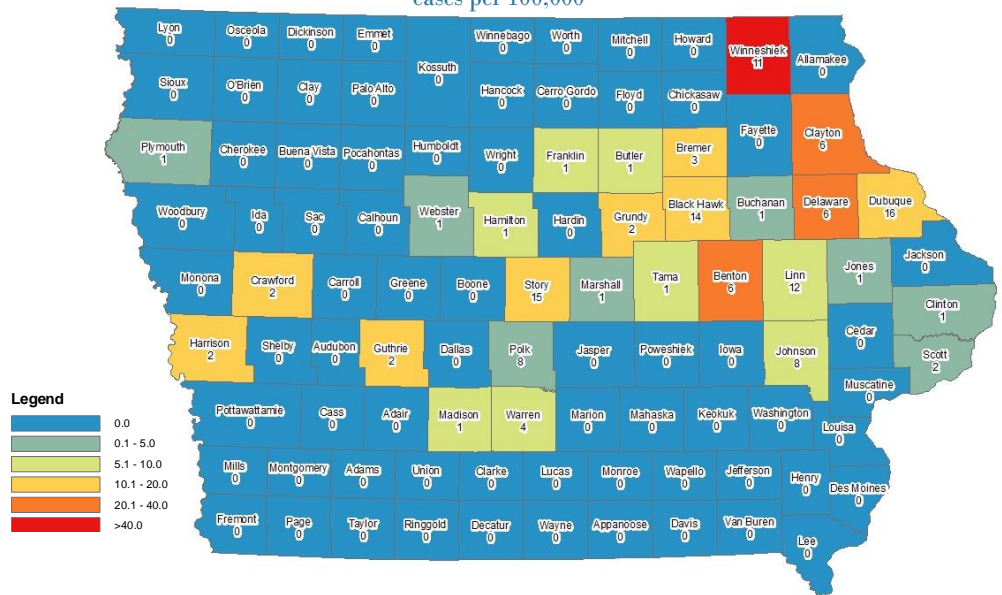
130

Statewide mumps cases in the past 12 months (confirmed and probable)

233

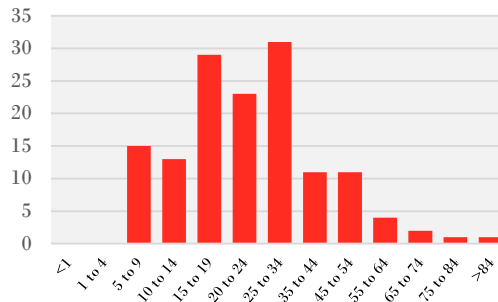
Average statewide mumps cases in the previous 5 years for the same time period (confirmed and probable)

12 Month county rates of mumps cases per 100,000

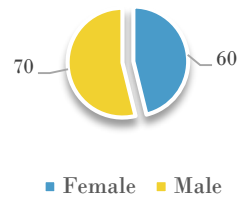


Note that rates based on <20 cases are not reliable and should be interpreted with caution

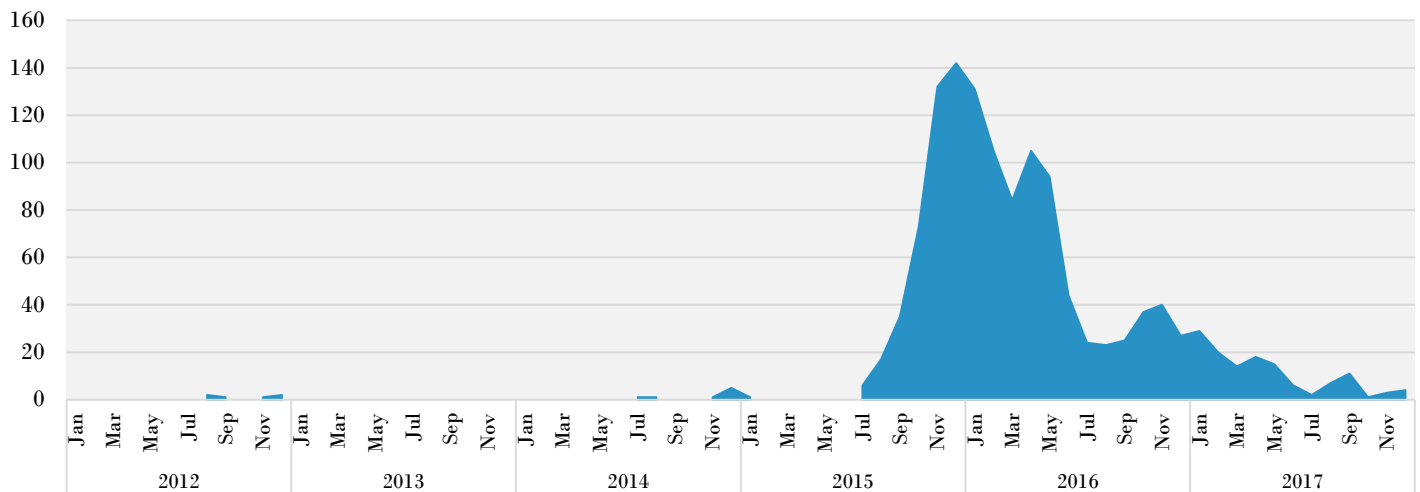
Mumps cases by age past 12 months



Mumps cases by gender past 12 months



Reported mumps cases by date of onset or first lab result



*CADE began using the suspect case definition as a final classification on Jan 1, 2017. Suspect cases are not included in the official case count but only meant to better estimate burden of disease. Any counts in this report from dates prior to Jan 1, 2017 do not include suspect cases.

Pertussis Summary

January 1, 2016 – December 31, 2017

6

Statewide pertussis cases in December (confirmed, probable, and suspect*)

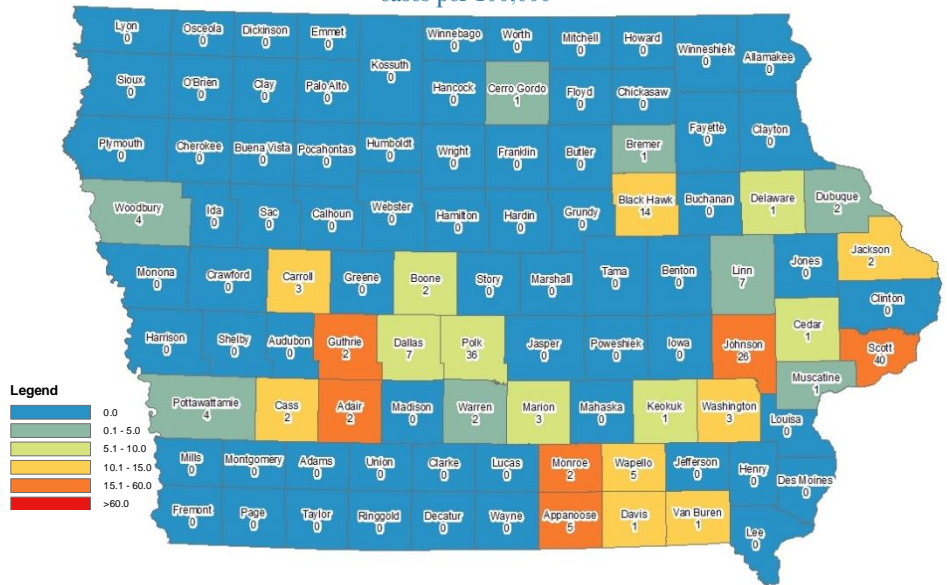
181

Statewide pertussis cases in the past 12 months (confirmed and probable)

520

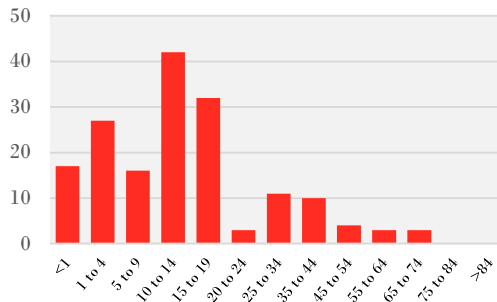
Average statewide pertussis cases in the previous 5 years for the same time period (confirmed and probable)

12 Month county rates of pertussis cases per 100,000

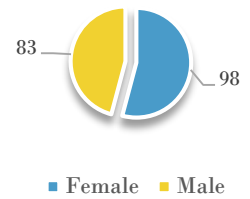


Note that rates based on <20 cases are not reliable and should be interpreted with caution

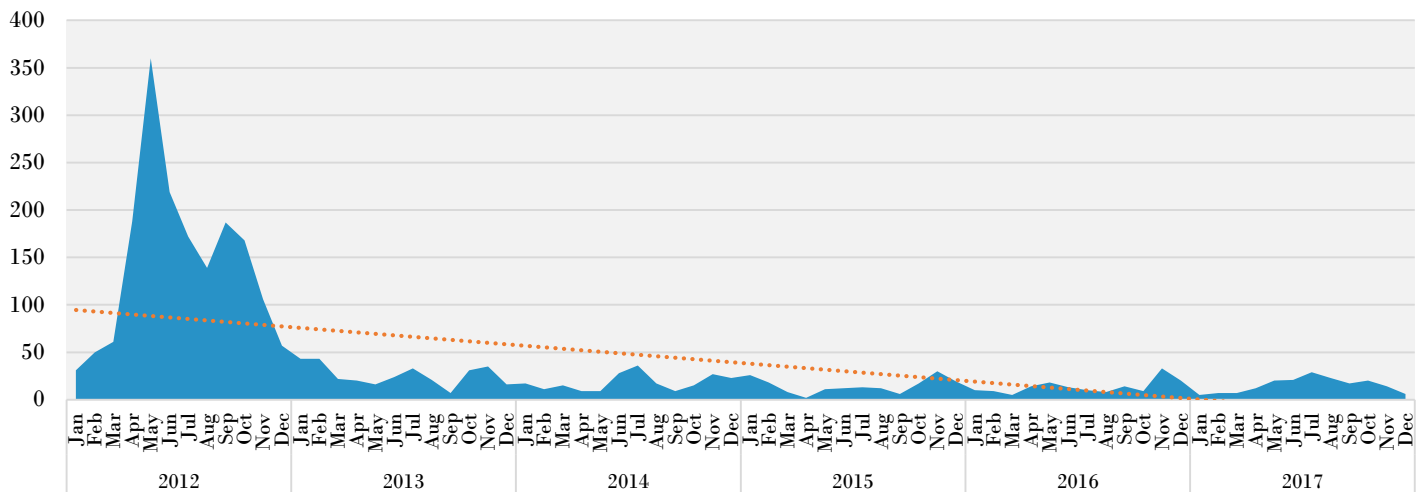
Pertussis cases by age past 12 months



Pertussis cases by gender past 12 months



Reported pertussis cases by date of onset or first lab result



*CADE began using the suspect case definition as a final classification on Jan 1, 2017. Suspect cases are not included in the official case count but only meant to better estimate burden of disease. Any counts in this report from dates prior to Jan 1, 2017 do not include suspect cases.

Salmonellosis Summary

January 1, 2016 – December 31, 2017

27

Statewide salmonellosis cases in December (confirmed and probable)

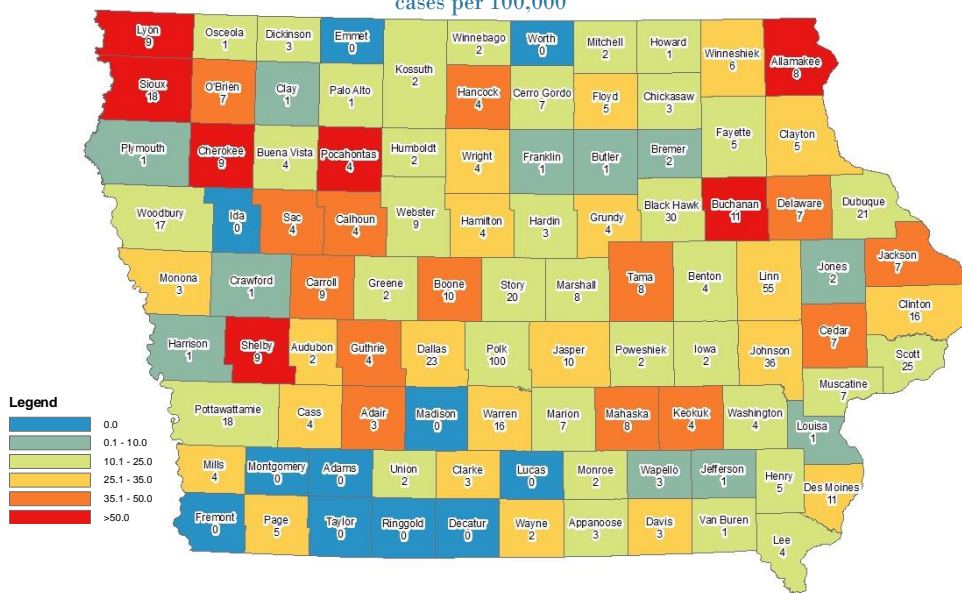
719

Statewide salmonellosis cases in the past 12 months (confirmed and probable)

624

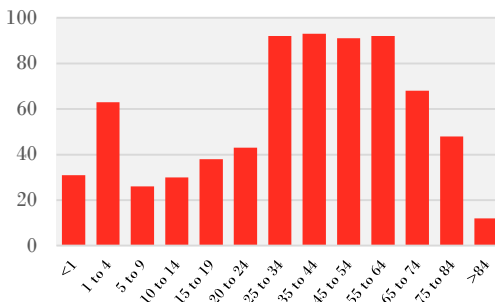
Average statewide salmonellosis cases in the previous 5 years for the same time period (confirmed and probable)

12 Month county rates of salmonellosis cases per 100,000

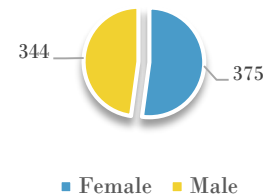


Note that rates based on <20 cases are not reliable and should be interpreted with caution

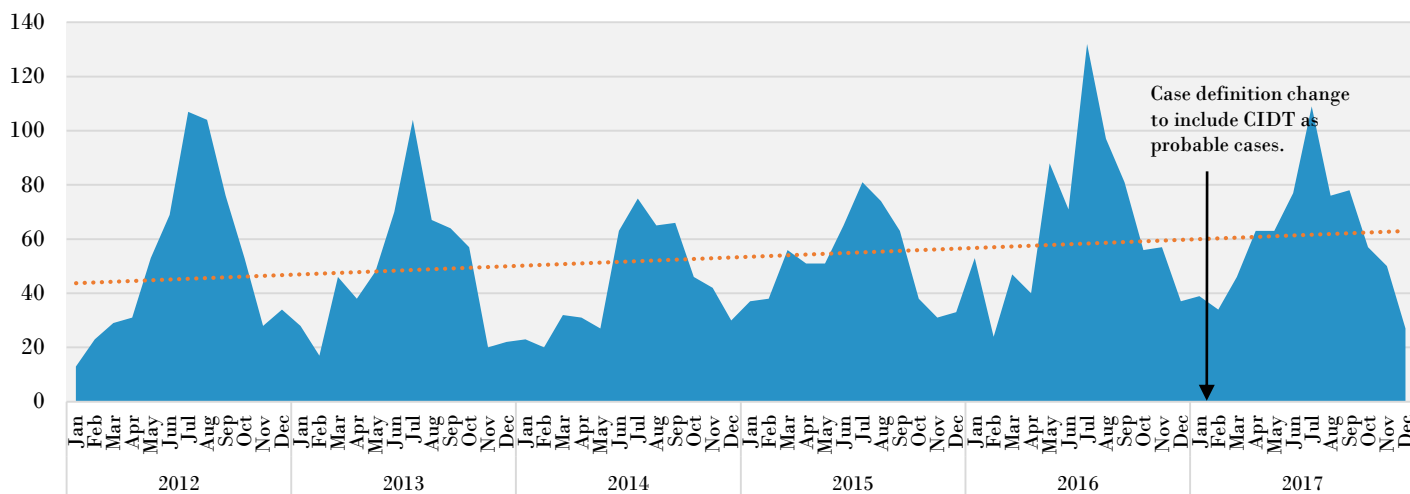
Salmonellosis cases by age past 12 months



Salmonellosis cases by gender past 12 months



Reported salmonellosis cases by date of onset or first lab report



Shigellosis Summary

January 1, 2017 – December 31, 2017

8

Statewide shigellosis cases in December (confirmed and probable)

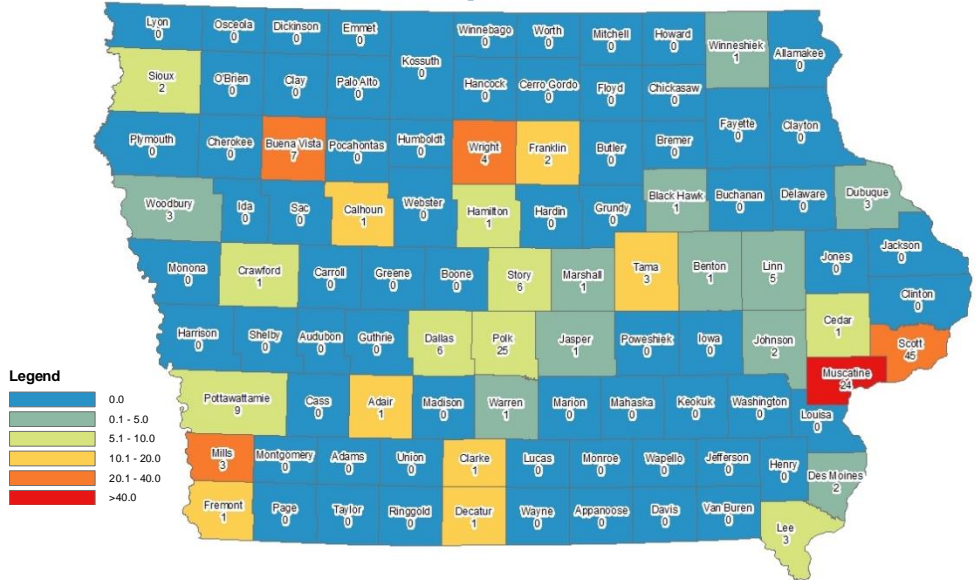
168

Statewide shigellosis cases in the past 12 months (confirmed and probable)

351

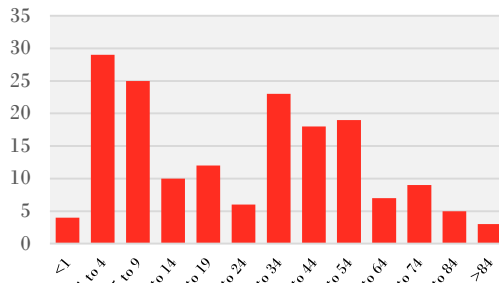
Average statewide shigellosis cases in the previous 5 years for the same time period (confirmed and probable)

12 Month county rates of shigellosis cases per 100,000

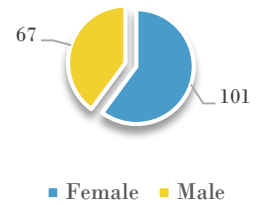


Note that rates based on <20 cases are not reliable and should be interpreted with caution

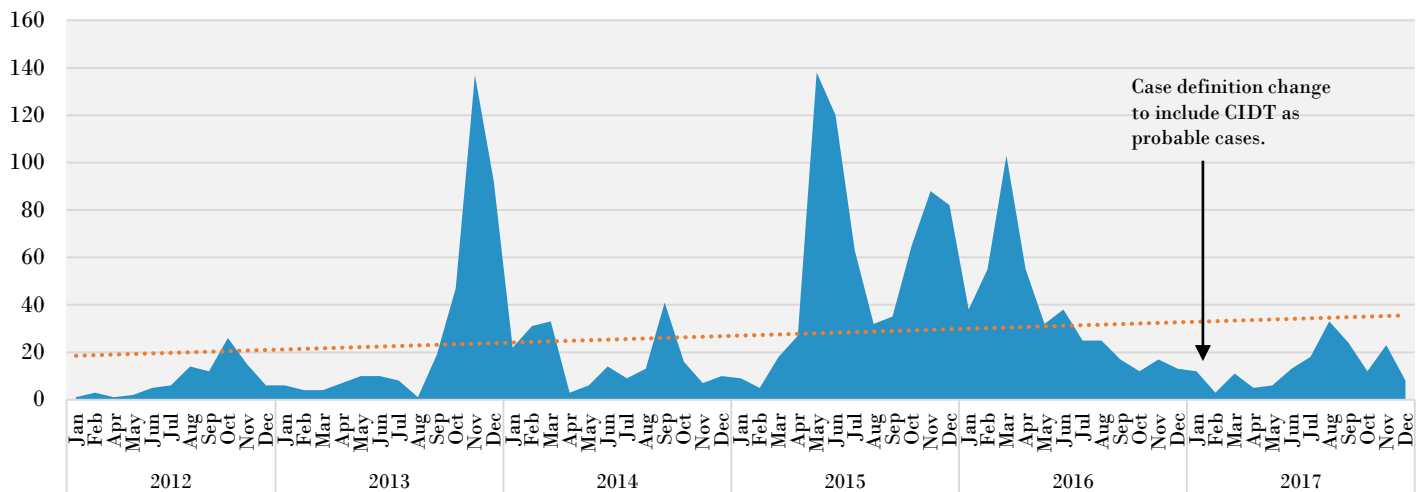
Shigellosis cases by age past 12 months



Shigellosis cases by gender past 12 months



Shigellosis cases by date of onset or first lab result



IOWA DEPARTMENT OF PUBLIC HEALTH

WWW.IDPH.IOWA.GOV

(515) 281-7689

CENTER FOR ACUTE DISEASE EPIDEMIOLOGY

WWW.IDPH.IOWA.GOV/CADE

1-800-362-2736

Gerd Clabaugh, MPA	Director
Sarah Reisetter, JD	Deputy Director
Ken Sharp, MPA, RS	Division Director
Patricia Quinlisk, MD, MPH	Medical Director/State Epidemiologist
Ann Garvey, DVM, MPH, MA	Public Health Veterinarian/ Deputy State Epidemiologist

CENTER FOR ACUTE DISEASE EPIDEMIOLOGY STAFF AND STUDENTS

Shawnice Cameron	Administrative Assistant
Amanda Casson, BA	Interview and Outbreak Response Team
Julie Coughlin, MPH	Vector-Borne Disease Epidemiologist
Chris Galeazzi, MPH	Field Epidemiologist Unit Lead
Amy Hoehne, MPH	Field Epidemiologist
Nick Kalas, MPH	Field Epidemiologist
Jill Newland	Iowa Disease Surveillance System (IDSS) Data Manager
Kemi Oni, MPH	Foodborne Disease Epidemiologist
Rob Ramaekers, MPH, CPH	Surveillance Unit Lead/Vaccine-Preventable Disease Program Coordinator
Scott Seltrecht, MPH	Field Epidemiologist
Kyli Torkelson, BS	Interview and Outbreak Response Team
Ngoc Tran, MPA, CPM	Iowa Disease Surveillance System (IDSS) Coordinator
Lisa Vitale, RN, BSN	Nurse Clinician
Diana Von Stein, MPH	Field Epidemiologist
Andy Weigel, MSW	Epidemiologist/Influenza Surveillance Program Coordinator
Nancy Wilde, BS, LPN	Epidemiologist/Healthcare-Associated Infection Program Coordinator
Ben Williamson	Interview and Outbreak Response Team