

Food Assistance Report Series F-1
(Revised Effective July 2016)
Report for December, 2017



Effective with the July 2016 Report.

Changes have been made to this report to provide more complete and accurate information about the households and individuals in Iowa receiving Food Assistance benefits through the federal Supplemental Nutrition Assistance Program (SNAP).

Categories for households have been renamed or added and the method used to assign households to categories changed to better reflect other types of assistance received from the Iowa Department of Human Services:

- * If one or more individuals receiving Food Assistance also receives FIP, the household is categorized as **FA/FIP**.

- * If no one receives FIP, but at least one individual also receives Medical Assistance, the household is categorized as **FA/Medical Assistance**.

- * If no one receives FIP or Medical Assistance, but at least one individual receives Healthy and Well Kids in Iowa or *hawk-i* benefits, the household is categorized as **FA/hawk-i**.

- * If no one receives FIP, Medical Assistance or *hawk-i*, the household is categorized as **FA Only**.

Categories for individuals have likewise been renamed or added. Using the same categories above, individuals are assigned based on their own circumstances. Previously, the household category was assigned to all members of the Food Assistance household, regardless of individual status. This change provides a more accurate individual count by category.

Finally, the timing for the report has changed. Previously produced at or near the end of the month, the report missed cases that were closed for any number of reasons when the report was created, only to shortly re-open. Now the report is produced mid-month after the report month. As a result, it may appear that caseloads have increased. Instead, the new report provides more complete and accurate counts by including cases missed by the old report.

Note that data for the corresponding month from the prior year was also categorized as described above allowing for an equivalent comparison to the current report month.

Food Assistance Report Series F-1
Report for December, 2017

Food Assistance Program - State Summary

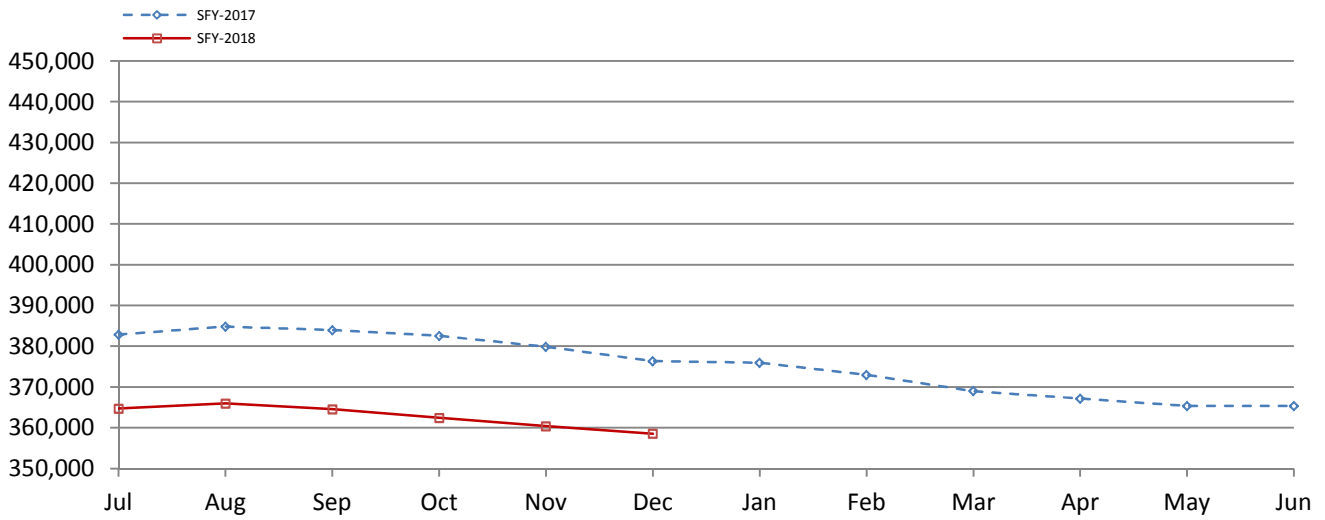
	<u>December, 2017</u>	<u>November, 2017</u>	<u>December, 2016</u>	<u>% of Change Over Last Year</u>
*Households				
FA/FIP	7,866	7,852	8,714	-9.7%
FA/Medical Assistance	142,300	142,043	147,393	-3.5%
FA/ <i>hawk-i</i>	672	635	590	13.9%
FA Only	20,252	20,602	20,800	-2.6%
Total Households	171,090	171,132	177,497	-3.6%
*Recipients				
FA/FIP	20,327	20,281	22,795	-10.8%
FA/Medical Assistance	288,292	288,753	300,047	-3.9%
FA/ <i>hawk-i</i>	2,244	2,159	2,052	9.4%
FA Only	47,695	49,188	51,483	-7.4%
Total Recipients	358,558	360,381	376,377	-4.7%
*Allotments				
FA/FIP	\$3,217,411	\$3,220,358	\$3,660,785	-12.1%
FA/Medical Assistance	\$31,597,328	\$31,617,902	\$33,613,779	-6.0%
FA/ <i>hawk-i</i>	\$158,484	\$156,877	\$133,581	18.6%
FA Only	\$3,327,164	\$3,443,945	\$3,465,904	-4.0%
Total Allotments	\$38,300,387	\$38,439,082	\$40,874,049	-6.3%
*Average Allotment per Household				
FA/FIP	\$409.03	\$410.13	\$420.10	-2.6%
FA/Medical Assistance	\$222.05	\$222.59	\$228.06	-2.6%
FA/ <i>hawk-i</i>	\$235.84	\$247.05	\$226.41	4.2%
FA Only	\$164.29	\$167.17	\$166.63	-1.4%
Overall Average per Household	\$223.86	\$224.62	\$230.28	-2.8%
*Average Allotment per Recipient				
FA/FIP	\$158.28	\$158.79	\$160.60	-1.4%
FA/Medical Assistance	\$109.60	\$109.50	\$112.03	-2.2%
FA/ <i>hawk-i</i>	\$70.63	\$72.66	\$65.10	8.5%
FA Only	\$69.76	\$70.02	\$67.32	3.6%
Overall Average per Recipient	\$106.82	\$106.66	\$108.60	-1.6%

State Fiscal Year to Date

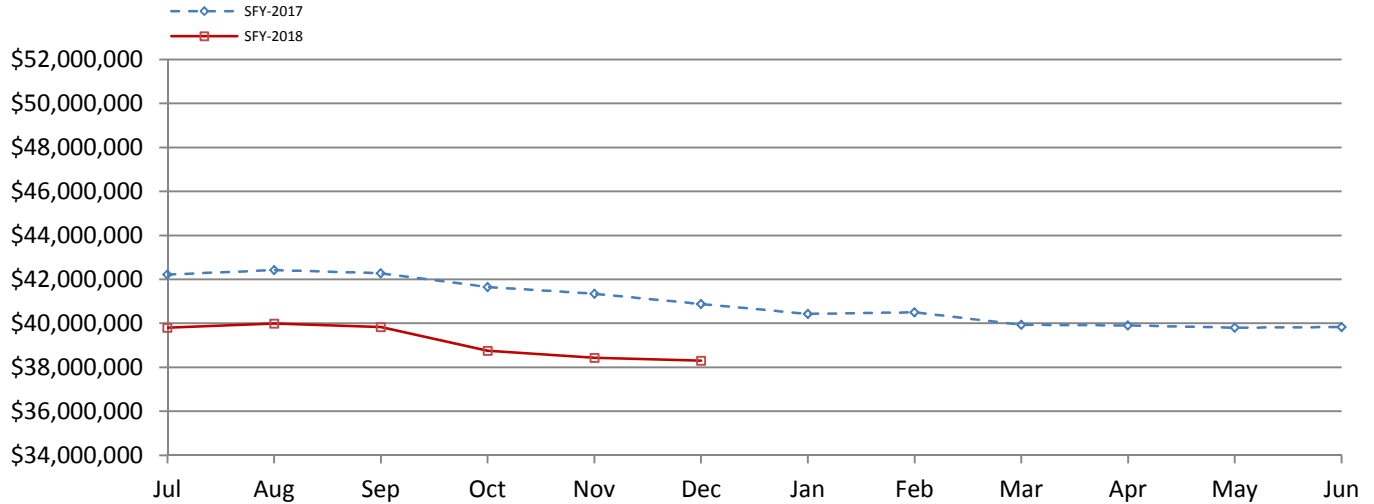
*Allotment	SFY 2018	SFY 2017	% of Change over Last Year
FA/FIP	\$19,654,639	\$22,430,081	-12.37%
FA/Medical Assistance	\$194,436,856	\$206,304,284	-5.75%
FA/ <i>hawk-i</i>	\$901,061	\$840,616	7.19%
FA Only	\$20,133,617	\$21,194,915	-5.01%
Total Allotment	\$235,126,173	\$250,769,896	-6.24%

Food Assistance Report Series F-1
Report for December, 2017

Total Food Assistance Recipients



Total Food Assistance Benefits



Food Assistance Report Series F-1
Report for December, 2017

Food Assistance Participation by Case Type and County

County	FA/FIP			FA/Medical Assistance			FA/hawk-i			FA Only			Total			Participation Rate*
	Households	Recipients	Allotment	Households	Recipients	Allotment	Households	Recipients	Allotment	Households	Recipients	Allotment	Households	Recipients	Allotment	
Area 0 - DHS																
DHS	0	0	\$0	5	13	\$1,443	0	0	\$0	2	3	\$291	7	16	\$1,734	0.0%
Area Total	0	0	\$0	5	13	\$1,443	0	0	\$0	2	3	\$291	7	16	\$1,734	

Food Assistance Participation by Case Type and County

County	FA/FIP			FA/Medical Assistance			FA/hawk-i			FA Only			Total			Participation Rate*
	Households	Recipients	Allotment	Households	Recipients	Allotment	Households	Recipients	Allotment	Households	Recipients	Allotment	Households	Recipients	Allotment	
Area 1 - Western																
Audubon	11	33	\$4,857	193	428	\$44,162	1	3	\$640	40	83	\$4,555	245	547	\$54,214	44.2%
Buena Vista	36	105	\$17,117	802	1,903	\$185,885	8	30	\$2,318	89	292	\$17,007	935	2,330	\$222,327	43.9%
Carroll	35	94	\$13,946	653	1,329	\$136,360	3	14	\$817	97	258	\$14,430	788	1,695	\$165,553	42.5%
Cass	30	80	\$13,156	678	1,405	\$138,279	4	18	\$743	87	196	\$11,387	799	1,699	\$163,565	45.4%
Cherokee	19	52	\$8,245	402	757	\$77,600	1	6	\$102	45	125	\$8,022	467	940	\$93,969	36.5%
Clay	19	47	\$6,898	701	1,401	\$131,547	1	7	\$352	93	223	\$13,440	814	1,678	\$152,237	44.3%
Crawford	71	183	\$29,763	629	1,448	\$152,513	6	18	\$1,234	95	251	\$14,962	801	1,900	\$198,472	34.8%
Dickinson	17	37	\$5,916	519	990	\$95,614	5	12	\$1,157	64	159	\$8,770	605	1,198	\$111,457	47.4%
Emmet	23	65	\$10,405	386	791	\$82,377	5	10	\$1,267	67	167	\$9,973	481	1,033	\$104,022	42.1%
Fremont	16	35	\$6,059	351	754	\$80,120	0	0	\$0	50	151	\$8,774	417	940	\$94,953	59.8%
Greene	22	60	\$10,020	432	963	\$99,980	1	7	\$560	51	147	\$7,707	506	1,177	\$118,267	50.2%
Guthrie	15	35	\$6,101	358	769	\$85,414	3	12	\$494	65	159	\$8,858	441	975	\$100,867	39.5%
Harrison	31	67	\$11,721	645	1,257	\$131,884	1	16	\$357	73	206	\$10,408	750	1,546	\$154,370	50.0%
Ida	7	17	\$2,815	224	449	\$48,046	1	8	\$15	27	70	\$3,333	259	544	\$54,209	32.2%
Kossuth	19	41	\$6,405	449	921	\$94,099	4	11	\$1,467	67	183	\$9,863	539	1,156	\$111,834	37.8%
Lyon	11	29	\$4,509	203	455	\$41,763	0	0	\$0	18	72	\$2,663	232	556	\$48,935	32.8%
Mills	27	62	\$10,397	534	1,138	\$126,948	3	7	\$987	49	185	\$9,569	613	1,392	\$147,901	47.6%
Monona	20	57	\$7,584	434	912	\$87,377	0	0	\$0	67	144	\$9,916	521	1,113	\$104,877	42.9%
Montgomery	36	94	\$14,277	675	1,406	\$153,246	2	9	\$519	102	224	\$15,385	815	1,733	\$183,427	53.5%
O'Brien	17	42	\$6,259	423	895	\$89,410	1	6	\$519	64	195	\$10,832	505	1,138	\$107,020	41.2%
Osceola	7	20	\$3,386	171	366	\$37,879	0	0	\$0	29	67	\$3,422	207	453	\$44,687	36.0%
Page	40	94	\$14,393	796	1,646	\$166,430	2	9	\$442	95	281	\$17,121	933	2,030	\$198,386	47.2%
Palo Alto	11	30	\$4,902	323	662	\$63,878	2	12	\$364	36	102	\$5,137	372	806	\$74,281	37.1%
Plymouth	13	41	\$5,506	587	1,324	\$134,728	5	26	\$1,278	78	210	\$13,122	683	1,601	\$154,634	37.1%
Pottawattamie	343	869	\$137,024	6,233	12,186	\$1,330,609	20	42	\$4,475	999	2,087	\$157,523	7,595	15,184	\$1,629,631	74.0%
Sac	8	16	\$2,775	306	666	\$65,709	0	0	\$0	53	134	\$4,551	367	816	\$73,035	42.7%
Shelby	14	38	\$6,319	409	861	\$82,809	1	7	\$830	49	150	\$8,008	473	1,056	\$97,966	39.6%
Sioux	12	21	\$3,253	511	1,162	\$120,043	7	23	\$2,022	61	186	\$8,810	591	1,392	\$134,128	23.3%
Taylor	5	9	\$1,500	273	575	\$56,348	1	1	\$253	34	89	\$6,705	313	674	\$64,806	38.0%
Woodbury	384	1,047	\$163,064	6,243	13,401	\$1,467,249	21	83	\$5,702	819	2,013	\$146,403	7,467	16,544	\$1,782,418	57.3%
Area Total	1,319	3,420	\$538,572	25,543	53,220	\$5,608,306	109	397	\$28,914	3,563	8,809	\$570,656	30,534	65,846	\$6,746,448	49.8%

Food Assistance Report Series F-1
Report for December, 2017

Food Assistance Participation by Case Type and County

County	FA/FIP			FA/Medical Assistance			FA/hawk-i			FA Only			Total			Participation Rate*
	Households	Recipients	Allotment	Households	Recipients	Allotment	Households	Recipients	Allotment	Households	Recipients	Allotment	Households	Recipients	Allotment	
Area 2 - Northern																
Allamakee	43	101	\$16,219	462	1,101	\$103,105	7	13	\$882	58	162	\$9,852	570	1,377	\$130,058	40.5%
Black Hawk	591	1,463	\$225,717	7,670	14,444	\$1,573,200	39	114	\$9,207	1,130	2,548	\$179,147	9,430	18,569	\$1,987,271	52.8%
Bremer	26	63	\$11,413	485	981	\$101,243	3	15	\$681	68	184	\$9,300	582	1,243	\$122,637	34.3%
Buchanan	35	81	\$13,717	675	1,308	\$133,456	1	10	\$352	76	203	\$11,801	787	1,602	\$159,326	42.4%
Butler	21	50	\$8,072	460	987	\$97,649	0	0	\$0	54	135	\$5,644	535	1,172	\$111,365	44.9%
Calhoun	13	30	\$4,754	326	718	\$69,370	2	13	\$149	39	117	\$5,812	380	878	\$80,085	34.5%
Cerro Gordo	94	251	\$39,795	2,273	4,136	\$430,167	5	24	\$1,019	306	642	\$42,485	2,678	5,053	\$513,466	48.4%
Chickasaw	9	29	\$4,790	311	699	\$66,837	2	6	\$918	57	146	\$7,858	379	880	\$80,403	29.8%
Clayton	13	30	\$4,380	489	994	\$92,735	4	9	\$1,192	65	166	\$7,228	571	1,199	\$105,535	29.0%
Delaware	27	87	\$12,816	484	946	\$101,897	1	13	\$46	53	148	\$7,726	565	1,194	\$122,485	29.4%
Fayette	54	125	\$21,672	991	2,069	\$199,138	4	15	\$491	132	331	\$19,698	1,181	2,540	\$240,999	50.0%
Floyd	51	130	\$19,828	752	1,534	\$148,317	4	14	\$858	95	238	\$14,607	902	1,916	\$183,610	43.6%
Franklin	23	68	\$9,953	384	850	\$86,768	1	6	\$33	40	137	\$7,439	448	1,061	\$104,193	40.5%
Grundy	9	28	\$3,487	249	521	\$52,113	1	3	\$152	29	105	\$4,967	288	657	\$60,719	33.4%
Hamilton	28	75	\$12,063	502	994	\$102,543	0	0	\$0	60	143	\$8,246	590	1,212	\$122,852	34.3%
Hancock	15	46	\$6,079	272	594	\$58,557	0	0	\$0	31	98	\$6,377	318	738	\$71,013	34.7%
Hardin	28	80	\$12,082	675	1,475	\$140,816	3	13	\$1,699	76	224	\$11,651	782	1,792	\$166,248	50.3%
Howard	16	41	\$6,418	254	486	\$48,096	3	9	\$769	39	96	\$5,474	312	632	\$60,757	26.3%
Humboldt	12	33	\$4,827	332	673	\$70,283	3	8	\$697	35	106	\$5,895	382	820	\$81,702	31.7%
Marshall	111	293	\$45,925	2,031	4,386	\$460,709	10	36	\$2,513	292	807	\$49,714	2,444	5,522	\$558,861	56.9%
Mitchell	13	29	\$4,614	276	537	\$52,872	1	1	\$313	35	100	\$6,926	325	667	\$64,725	29.7%
Pocahontas	11	29	\$4,622	281	664	\$63,372	2	10	\$596	48	103	\$5,675	342	806	\$74,265	41.8%
Webster	178	431	\$66,569	2,449	4,684	\$513,697	9	31	\$2,217	332	724	\$50,692	2,968	5,870	\$633,175	61.4%
Winnebago	18	44	\$6,949	353	754	\$82,087	3	6	\$828	45	117	\$6,082	419	921	\$95,946	40.7%
Winneshiek	21	55	\$7,856	388	757	\$70,553	4	10	\$277	54	133	\$5,279	467	955	\$83,965	31.1%
Worth	10	35	\$5,369	201	420	\$42,884	1	5	\$15	32	90	\$5,520	244	550	\$53,788	31.5%
Wright	39	105	\$15,657	582	1,315	\$143,339	4	16	\$841	67	179	\$11,956	692	1,615	\$171,793	52.9%
Area Total	1,509	3,832	\$595,643	24,607	49,027	\$5,105,803	117	400	\$26,745	3,348	8,182	\$513,051	29,581	61,441	\$6,241,242	45.7%

Food Assistance Report Series F-1
Report for December, 2017

Food Assistance Participation by Case Type and County

County	FA/FIP			FA/Medical Assistance			FA/hawk-i			FA Only			Total			Participation Rate*
	Households	Recipients	Allotment	Households	Recipients	Allotment	Households	Recipients	Allotment	Households	Recipients	Allotment	Households	Recipients	Allotment	
Area 3 - Eastern																
Cedar	13	31	\$5,302	435	942	\$101,590	2	6	\$514	53	173	\$10,012	503	1,152	\$117,418	37.3%
Clinton	168	389	\$64,518	3,197	6,225	\$691,560	8	31	\$1,630	341	827	\$53,189	3,714	7,472	\$810,897	63.8%
Des Moines	192	467	\$75,316	2,831	5,684	\$639,060	12	33	\$3,530	341	900	\$59,672	3,376	7,084	\$777,578	62.2%
Dubuque	275	714	\$110,717	3,921	8,023	\$882,505	12	50	\$2,254	607	1,291	\$103,221	4,815	10,078	\$1,098,697	52.5%
Henry	45	126	\$20,680	945	1,991	\$211,910	3	9	\$553	85	264	\$12,581	1,078	2,390	\$245,724	47.6%
Jackson	45	114	\$18,668	832	1,699	\$174,876	2	8	\$370	80	218	\$11,577	959	2,039	\$205,491	42.8%
Lee	147	374	\$62,456	2,343	4,743	\$519,638	8	23	\$1,503	275	683	\$49,460	2,773	5,823	\$633,057	58.8%
Louisa	22	53	\$8,432	381	806	\$81,835	5	10	\$1,114	34	100	\$6,582	442	969	\$97,963	36.3%
Muscatine	131	349	\$53,487	2,467	5,068	\$553,616	10	33	\$1,140	271	788	\$48,801	2,879	6,238	\$657,044	61.8%
Scott	711	1,789	\$293,537	10,856	21,795	\$2,553,660	25	86	\$6,226	1,710	3,780	\$311,253	13,302	27,450	\$3,164,676	75.5%
Area Total	1,749	4,406	\$713,113	28,208	56,976	\$6,410,250	87	289	\$18,834	3,797	9,024	\$666,348	33,841	70,695	\$7,808,545	61.9%

Food Assistance Participation by Case Type and County

County	FA/FIP			FA/Medical Assistance			FA/hawk-i			FA Only			Total			Participation Rate*
	Households	Recipients	Allotment	Households	Recipients	Allotment	Households	Recipients	Allotment	Households	Recipients	Allotment	Households	Recipients	Allotment	
Area 4 - Cedar Rapids																
Appanoose	31	82	\$12,876	850	1,543	\$160,924	5	10	\$1,455	96	203	\$14,328	982	1,838	\$189,583	52.0%
Benton	29	69	\$9,528	823	1,674	\$181,647	4	24	\$1,267	98	252	\$13,123	954	2,019	\$205,565	46.0%
Davis	13	37	\$6,625	256	532	\$55,926	1	8	\$10	28	75	\$4,760	298	652	\$67,321	22.6%
Iowa	9	20	\$2,689	367	764	\$81,992	1	1	\$140	47	122	\$7,215	424	907	\$92,036	31.2%
Jasper	80	181	\$28,913	1,684	3,344	\$369,119	10	25	\$2,679	223	542	\$36,337	1,997	4,092	\$437,048	56.9%
Jefferson	34	79	\$12,686	943	1,660	\$179,222	3	13	\$667	127	286	\$18,235	1,107	2,038	\$210,810	44.9%
Johnson	249	695	\$106,010	4,156	8,552	\$951,807	22	63	\$4,551	635	1,377	\$102,844	5,062	10,687	\$1,165,212	30.9%
Jones	34	87	\$14,607	630	1,413	\$142,117	1	6	\$504	80	202	\$12,938	745	1,708	\$170,166	45.0%
Keokuk	18	46	\$7,146	436	914	\$95,282	1	2	\$500	34	123	\$4,661	489	1,085	\$107,589	40.2%
Linn	689	1,847	\$284,541	10,938	21,591	\$2,395,284	48	166	\$7,196	1,551	3,325	\$249,516	13,226	26,929	\$2,936,537	66.6%
Mahaska	59	137	\$21,082	1,099	2,095	\$231,554	8	27	\$2,365	194	414	\$31,328	1,360	2,673	\$286,329	45.4%
Monroe	24	61	\$10,611	312	656	\$64,893	2	8	\$441	51	111	\$7,273	389	836	\$83,218	39.0%
Poweshiek	13	28	\$4,150	563	1,131	\$113,856	0	0	\$0	82	191	\$13,142	658	1,350	\$131,148	37.5%
Tama	23	52	\$8,785	650	1,476	\$149,345	4	8	\$1,331	80	222	\$12,846	757	1,758	\$172,307	48.3%
Van Buren	12	25	\$4,141	328	659	\$68,854	0	0	\$0	35	85	\$5,716	375	769	\$78,711	39.5%
Wapello	183	445	\$73,944	2,647	4,960	\$552,391	8	33	\$2,097	321	786	\$53,472	3,159	6,224	\$681,904	55.3%
Washington	28	67	\$9,866	720	1,544	\$159,921	8	25	\$1,231	75	256	\$11,274	831	1,892	\$182,292	43.3%
Area Total	1,528	3,958	\$618,200	27,402	54,508	\$5,954,134	126	419	\$26,434	3,757	8,572	\$599,008	32,813	67,457	\$7,197,776	48.3%

Food Assistance Report Series F-1
Report for December, 2017

Food Assistance Participation by Case Type and County

County	FA/FIP			FA/Medical Assistance			FA/hawk-i			FA Only			Total			Participation Rate*
	Households	Recipients	Allotment	Households	Recipients	Allotment	Households	Recipients	Allotment	Households	Recipients	Allotment	Households	Recipients	Allotment	
Area 5 - Des Moines																
Adair	13	35	\$5,764	270	544	\$52,444	3	7	\$257	35	96	\$4,670	321	682	\$63,135	44.8%
Adams	5	11	\$1,982	141	286	\$29,354	2	8	\$263	27	61	\$3,684	175	366	\$35,283	47.2%
Boone	29	62	\$9,626	877	1,742	\$197,255	6	16	\$1,627	139	317	\$22,133	1,051	2,137	\$230,641	34.6%
Clarke	18	45	\$7,233	533	1,133	\$127,956	2	7	\$22	65	174	\$11,298	618	1,359	\$146,509	50.3%
Dallas	38	97	\$15,310	1,362	2,887	\$318,584	12	43	\$3,582	167	483	\$31,050	1,579	3,510	\$368,526	37.6%
Decatur	22	49	\$7,915	457	965	\$102,046	0	0	\$0	93	189	\$15,039	572	1,203	\$125,000	43.7%
Lucas	18	38	\$7,069	458	959	\$98,879	2	10	\$687	63	190	\$10,884	541	1,197	\$117,519	58.5%
Madison	10	32	\$4,311	411	872	\$95,315	4	10	\$785	53	160	\$8,067	478	1,074	\$108,478	37.2%
Marion	44	103	\$15,896	1,094	2,336	\$253,356	4	14	\$577	139	389	\$21,296	1,281	2,842	\$291,125	47.7%
Polk	1,371	3,777	\$600,624	26,365	53,831	\$6,234,185	170	501	\$44,090	4,193	9,226	\$713,806	32,099	67,335	\$7,592,705	67.9%
Ringgold	8	23	\$2,569	202	392	\$39,557	0	0	\$0	16	58	\$3,050	226	473	\$45,176	38.8%
Story	93	218	\$34,024	2,162	4,106	\$470,494	17	41	\$3,519	480	904	\$78,300	2,752	5,269	\$586,337	20.0%
Union	36	91	\$15,133	726	1,415	\$156,657	4	13	\$895	96	255	\$18,985	862	1,774	\$191,670	51.9%
Warren	45	107	\$18,791	1,193	2,497	\$275,918	6	26	\$838	185	504	\$31,007	1,429	3,134	\$326,554	43.0%
Wayne	14	31	\$5,636	302	612	\$65,392	1	8	\$415	36	101	\$4,541	353	752	\$75,984	44.3%
Area Total	1,764	4,719	\$751,883	36,553	74,577	\$8,517,392	233	704	\$57,557	5,787	13,107	\$977,810	44,337	93,107	\$10,304,642	53.7%
State Total	7,869	20,335	\$3,217,411	142,318	288,321	\$31,597,328	672	2,209	\$158,484	20,254	47,697	\$3,327,164	171,113	358,562	\$38,300,387	51.7%

* Participation Rate is the percentage of individuals at or below 160% FPL who are receiving Food Assistance in a given area (County/SA/State). It is calculated by dividing the number of Food Assistance Recipients in an area (County/SA/State) by the number of persons in that area at or below 160% of the Federal Poverty Level (as counted in the 2015 American Community Survey).