

Iowa Acute Disease Monthly Update

Center for Acute Disease Epidemiology
November
2017



Iowa Department of Public Health

TABLE OF CONTENTS

Introduction	3
Iowa County Boundaries and Population	4
October Case Counts – Counties A-J	5
October Case Counts – Counties K-W	6
YTD Case Counts – Counties A-J	7
YTD Case Counts – Counties K-W	8
12 Month Case Counts – Counties A-J	9
12 Month Case Counts – Counties K-W	10
Campylobacteriosis Summary	11
Cryptosporidiosis Summary	12
E. coli (STEC) Summary	13
Mumps Summary	14
Pertussis Summary	15
Salmonellosis Summary	16
Shigellosis Summary	17
Center for Acute Disease Epidemiology (CADE) Staff	18

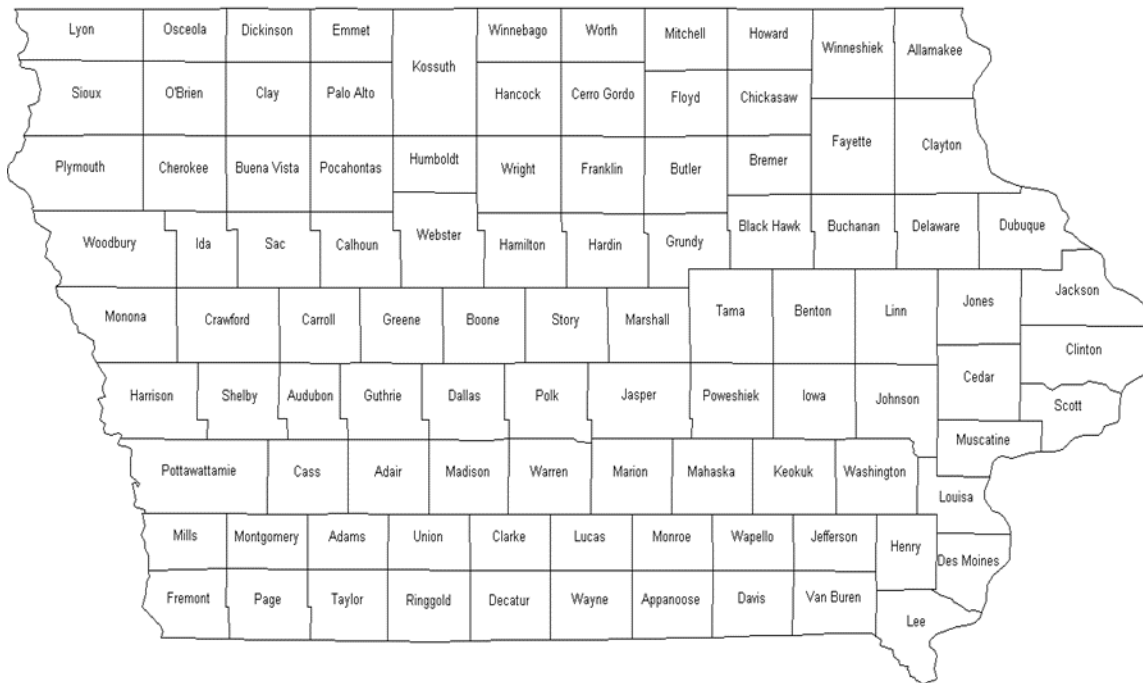
INTRODUCTION

The Center for Acute Disease Epidemiology (CADE) uses the most recent Council of State and Territorial Epidemiologists (CSTE) / Centers for Disease Control and Prevention (CDC) case definitions found on the [National Notifiable Disease Surveillance System \(NNDSS\)](#) page. These definitions are used to classify the case as confirmed, probable, suspect, not a case, or awaiting more information. **Only confirmed and probable cases meeting the CSTE/CDC case definitions are included in official case counts.** CADE began using the suspect case definition as a final classification on Jan 1, 2017. Suspect cases are not included in the official case count but only meant to better estimate burden of disease. Any counts in this report from dates prior to Jan 1, 2017 do not include suspect cases.

Disease case counts were compiled from the Iowa Disease Surveillance System (IDSS). Data are provisional and subject to monthly reporting variation.

Rates were calculated using the 2010 census population for the State of Iowa.

Iowa County Boundaries and Population



IOWA POPULATION					3,046,355
2010 CENSUS					
ADAIR	7,472	FLOYD	16,092	MONONA	9,121
ADAMS	3,894	FRANKLIN	10,548	MONROE	8,012
ALLAMAKEE	14,169	FREMONT	7,080	MONTGOMERY	10,424
APPANOOSE	12,692	GREENE	9,139	MUSCATINE	42,836
AUDUBON	5,873	GRUNDY	12,314	O'BRIEN	14,044
BENTON	25,699	GUTHRIE	10,687	OSCEOLA	6,211
BLACK HAWK	132,546	HAMILTON	15,312	PAGE	15,713
BOONE	26,364	HANCOCK	11,094	PALO ALTO	9,185
BREMER	24,624	HARDIN	17,441	PLYMOUTH	24,957
BUCHANAN	20,976	HARRISON	14,431	POCAHONTAS	7,154
BUENA VISTA	20,567	HENRY	20,222	POLK	451,677
BUTLER	15,021	HOWARD	9,526	POTTAWATTAMIE	92,728
CALHOUN	9,926	HUMBOLDT	9,688	POWESHIEK	18,601
CARROLL	20,589	IDA	7,141	RINGGOLD	5,072
CASS	13,598	IOWA	16,330	SAC	10,071
CEDAR	18,393	JACKSON	19,587	SCOTT	170,385
CERRO GORDO	43,575	JASPER	36,641	SHELBY	11,961
CHEROKEE	11,945	JEFFERSON	16,810	SIOUX	34,547
CHICKASAW	12,321	JOHNSON	139,155	STORY	92,406
CLARKE	9,325	JONES	20,611	TAMA	17,576
CLAY	16,491	KEOKUK	10,329	TAYLOR	6,161
CLAYTON	17,773	KOSSUTH	15,321	UNION	12,583
CLINTON	48,420	LEE	35,682	VAN BUREN	7,436
CRAWFORD	17,434	LINN	216,111	WAPELLO	35,391
DALLAS	74,641	LOUISA	11,282	WARREN	47,336
DAVIS	8,791	LUCAS	8,746	WASHINGTON	22,015
DECATUR	8,136	LYON	11,712	WAYNE	6,402
DELAWARE	17,534	MADISON	15,448	WEBSTER	37,044
DES MOINES	40,480	MAHASKA	22,417	WINNEBAGO	10,554
DICKINSON	16,955	MARION	33,252	WINNESHIEK	20,994
DUBUQUE	95,697	MARSHALL	40,994	WOODBURY	102,130
EMMET	9,996	MILLS	14,896	WORTH	7,541
FAYETTE	20,502	MITCHELL	10,709	WRIGHT	12,972

Case Counts for October 2017 (Counties A-J)

Confirmed, Probable, and Suspect* Cases

Note: Only counties with cases in September are displayed in the table.

	Campylobacteriosis	CRE <i>Citrobacter</i>	CRE <i>Enterobacter</i>	CRE <i>Klebsiella</i>	Cryptosporidiosis	Dengue	<i>E. coli</i> (STEC)	Ehrlichiosis/Anaplasmosis	Giardiasis	Hepatitis B acute	Hepatitis B chronic	Legionellosis	Listeria	Lyme	Malaria	Pertussis	Rocky Mountain spotted fever	Salmonellosis	Shigellosis	Tularemia	Total	
Adair																1		1			2	
Adams							1															1
Allamakee					1														1			2
Appanoose	2				1						1								1			5
Audubon							1															1
Benton					1		1							1								3
Black Hawk	2																1		1			4
Boone	1																		5			6
Buchanan	1																		1			2
Buena Vista																			1			1
Calhoun	4						1															5
Carroll					2														1			3
Cass	1									1												2
Cedar	1						1															2
Cerro Gordo	1								1				1									3
Cherokee							1															1
Clarke	3																					3
Clay					1														1			2
Clayton	3				8																	11
Clinton	2				2														1			5
Crawford	4																					4
Dallas			1				1	1											2			5
Davis					1																	1
Decatur					1																	1
Delaware	1				2		1		1													5
Dickinson	3																					3
Dubuque	3		1		2		2		2		2	1		2				2	1			18
Emmet	1				1																	2
Fayette							2												1			3
Floyd																			1			1
Franklin		1																	1			2
Fremont																	1					1
Greene	1																					1
Grundy																			3			3
Guthrie																			1			1
Hamilton	3																					3
Hancock	1																					1
Hardin	1																		1			2
Harrison								1									1	1				3
Humboldt	1																					1
Jackson	2						1		1													4
Jasper	3						2			1									1			7
Jefferson										1												1
Johnson	3				1		1				3			1					1			10
Jones	2						1		2													5

*CADE began using the suspect case definition as a final classification on Jan 1, 2017. Suspect cases are not included in the official case count but only meant to better estimate burden of disease. Any counts in this report from dates prior to Jan 1, 2017 do not include suspect cases.

Case Counts for October 2017 (Counties K-W)

Confirmed, Probable, and Suspect* Cases

Note: Only counties with cases in October are displayed in the table.

	Campylobacteriosis	CRE <i>Citrobacter</i>	CRE <i>Enterobacter</i>	CRE <i>Klebsiella</i>	Cryptosporidiosis	Dengue	<i>E. coli</i> (STEC)	Ehrlichiosis/Anaplasmosis	Giardiasis	Hepatitis B acute	Hepatitis B chronic	Legionellosis	Listeria	Lyme	Malaria	Pertussis	Rocky Mountain spotted fever	Salmonellosis	Shigellosis	Tularemia	Total	
Keokuk					2																2	
Kossuth	1		1																			2
Lee			1	1	1				1										1			5
Linn	4		1		1				1		1			1			2		2	1		14
Louisa	1																					1
Lucas	2				2		1		1													6
Lyon	1																		1			2
Madison	4								1												1	6
Mahaska	2								1										1			4
Marion														1								1
Marshall	4						1															5
Mills	1											1										2
Mitchell	1																					1
Monona																			1			1
Monroe							2										1					3
Montgomery	2																					2
Muscatine							3															3
O'Brien	1																					1
Page	1																					1
Palo Alto	2																					2
Plymouth	1				3																	4
Pocahontas	2																		1			3
Polk	17				9		6		2		4	2		1	1	3		8	2		55	
Pottawattamie					2		1					1						1				5
Poweshiek	1				1																	2
Sac					1				1										1			3
Scott	3											2					4		1	7		17
Sioux	3				3				1		1											8
Story	2						1		1		1								2			7
Tama	1				2																	3
Union	1																					1
Wapello	2																					2
Warren	3				1														5			9
Washington	2				1														1			4
Wayne																			1			1
Webster	1																					1
Winneshiek	1													2								3
Woodbury	1		1		1	1					1											5
Worth	1																					1
Wright	2																					2
Total	121	1	6	1	54	1	32	2	17	1	16	7	1	9	1	12	3	55	11	1	352	

*CADE began using the suspect case definition as a final classification on Jan 1, 2017. Suspect cases are not included in the official case count but only meant to better estimate burden of disease. Any counts in this report from dates prior to Jan 1, 2017 do not include suspect cases.

YTD Case Counts 2017 (Counties K-W)

Confirmed, Probable, and Suspect* Cases

	Babesiosis	Campylobacteriosis	Chikungunya	CRE <i>Citrobacter</i>	CRE <i>Enterobacter</i>	CRE <i>Escherichia coli</i>	CRE <i>Klebsiella</i>	Cryptosporidiosis	Cyclosporiasis	Dengue	<i>E. coli</i> (STEC)	Ehrlichiosis/Anaplasmosis	Giardiasis	Haemophilus influenzae type B (invasive)	Hansen's Disease	Hep E	Hepatitis A	Hepatitis B acute	Hepatitis B chronic	Hepatitis D	HUS	Lacrosse	Legionellosis	Listeria	Lyme	Malaria	Mumps	<i>N. meningitidis</i> (invasive)	Pertussis	Q Fever Acute	Q Fever Chronic	Rocky Mountain spotted fever	Salmonellosis	Shigellosis	Tetanus	Tularemia	West Nile virus	Total		
Keokuk	5			1	1		4				1													1							1	3							18	
Kossuth	3			2				1			4		1																					2						13
Lee	2			1	3	7	4				1	1	2																				4	3					28	
Linn	54		1	3			39	1			18	1	13							15					32	1	11		6				51	5				1	252	
Louisa	3										1		1						2														1						8	
Lucas	9							3			5	1	1									1																	20	
Lyon	6							5			8		1									1											6					2	29	
Madison	15						7				5		2														1										1		31	
Mahaska	9						2	2			2		2										1										7						25	
Marion	7						8				1								1						1				3			6							27	
Marshall	8				1	2	1	3			3	1	1						3				1	1	2			1				7	1						36	
Mills	3				1		5				2												1										4	3					19	
Mitchell	11			1			9				11		3																				1						36	
Monona	1																																3						4	
Monroe	3			1			3				3																		2				2						14	
Montgomery	2		1		2														1																			1	6	
Muscatine	13					1	3	1	1	11		3				1	1		2				1		2				1			7	24						72	
O'Brien	5			1			1				2		1																				6						16	
Osceola	3																																1					1	5	
Page	5						1				2		1																				5						14	
Palo Alto	8										2							1																						11
Plymouth	6						8				6		4					1									1						1							27
Pocahontas	8						2				7																						2							19
Polk	120		1	4	2	1	46	6	1	46		48					2	4	68	3			3		17	5	8		34	1		1	87	22			1	1	532	
Pottawattamie	20			1	1		4	1		7	1	8							7				3		3				2			1	15	9				1	84	
Poweshiek	5						1				1												1										1					1	11	
Ringgold	1						3				1																													5
Sac	10						4				4		2																				3							24
Scott	27			2	2	1	8	1		10		11	1				1	2	12				4		13	1	2	1	31			23	28						181	
Shelby	9						7				3							1	1														7							28
Sioux	24						34	2			5		9						1						1				1				15	1						93
Story	1	34		2			15	2		5	3	13							6						5	3	15						17	6					1	128
Tama	3			1			3				2														2		1						7	3						22
Taylor							1				1												1																	3
Union	8						5				6		1										1										2							23
Van Buren	5				1		1				1																		1				1							10
Wapello	17						4				2								3						1	1		4	1			1								34
Warren	1	14			1	1	8				5		9						1									4		1			1	16				1		63
Washington	8						2				2		1																				4							20
Wayne	1																																							4
Webster	7						6		1	5		2													2		1			1			7							32
Winnebago	2						1					1													1								2							7
Winneshieck	13			1			11	1			1	1				1									6		11						6	1						53
Woodbury	16		1	5		1	17		1	4	1	7		1				1	12					1				4			1	17	3					1	94	
Worth	5						4				2																													11
Wright	7						1				1																						3	1						13
Total	3	966	1	12	47	25	20	496	29	4	385	26	227	2	1	2	7	10	195	5	6	1	31	3	241	18	122	1	150	12	1	12	639	136	1	3	12	3852		

*CADE began using the suspect case definition as a final classification on Jan 1, 2017. Suspect cases are not included in the official case count but only meant to better estimate burden of disease. Any counts in this report from dates prior to Jan 1, 2017 do not include suspect cases.

Case Counts for November 1, 2016 – October 31, 2017

(Counties K-W)

Confirmed and Probable Cases

	Babesiosis	Campylobacteriosis	Chikungunya	CRE Citrobacter	CRE Enterobacter	CRE Escherichia coli	CRE Klebsiella	Cryptosporidiosis	Cyclosporiasis	Dengue	E. coli (STEC)	Ehrlichiosis/Anaplasmosis	Giardiasis	Haemophilus influenzae type B (invasive)	Hansen's disease	Hantavirus	Hep E	Hepatitis A	Hepatitis B acute	Hepatitis B chronic	Hepatitis D	HUS	Lacrosse	Legionellosis	Listeria	Lyme	Malaria	Mumps	N. meningitidis (invasive)	Pertussis	Q Fever Acute	Q Fever Chronic	Rocky Mountain spotted fever	Salmonellosis	Shigellosis	Tetanus	Tularemia	West Nile virus	Total	
Keokuk	6			1		4																			1	1					1	3						17		
Kossuth	4										3		2																											13
Lee	2					2	6	4			1	1	2					1																	4	3				26
Linn	60							39	1		10	1	13													31	3	10		3				61	5			1	256	
Louisa	4												1								2													1					8	
Lucas	9							3			4	1	1										1							10									29	
Lyon	8							5			6		1									1												6					2	29
Madison	16							8			3		2																									1	30	
Mahaska	12						2	2			1		3											1											7					28
Marion	8							9																		1				3				6					28	
Marshall	9					1	1	3			4	1	1											1	1	2		1						8	1				37	
Mills	3							3			2													1										6	3				18	
Mitchell	12							11			10		3																						1				37	
Monona	1							2														1												3					7	
Monroe	3			1				3			1		1																	2				2		1			14	
Montgomery	2				2															1																			5	
Muscatine	15					1	3	1	1	10		4					1	1			2			1	3	1		3					10	25				82		
O'Brien	5							2			1	1																						6					15	
Osceola	3												1												1									2				1	8	
Page	5							1			2		1																					5					14	
Palo Alto	8										2									1															2				13	
Plymouth	8							11			5		5								1						1								2				33	
Pocahontas	8							2			2		1																						2				15	
Polk	136			1		1	50	6		20		59						3	5	94	3		3		18	7	9		48	1		1	99	29		1	1	595		
Pottawattamie	24			1	1		4	1			7	1	8								8			3	3				2			1	17	13			1	95		
Poweshiek	5							1																1							1			1				1	10	
Ringgold	1						3																																4	
Sac	12						4						2																					4					23	
Scott	33			1	1		8	1		8		13	1	1		1		1	2	20				7	14		2	1	30				26	26				196		
Shelby	9						6			3									1	1														7					27	
Sioux	26						32	2			2		10												1				1				18	1					94	
Story	1	38		1			15	2			3	2	17												5	3	13						19	6				1	133	
Tama	5			1			3				1										1				2		1						8	3					25	
Taylor	1						1				1											1												1					4	
Union	9						5				4		1											1										2					22	
Van Buren	5				1		1				1																							1					10	
Wapello	21						6				2														1	1			2	1				1					39	
Warren	1	15					10				1										1						5		10			1	17				1		71	
Washington	9							2			2		1																					3					23	
Wayne	2																			1	1														2				6	
Webster	8						7		1	1		2													2		1			1			7	6					36	
Winnebago	2						1					1													1									2					7	
Winneshie	13						12	1			1															6		11						6	1					52
Woodbury	17		1	2			18			1	4	1	8		1					1	14					1			3			1	17	3				1	94	
Worth	7						4				2																													13
Wright	7						1				1		2																						3	1				15
Total	2	1091	1	3	15	12	13	523	29	4	265	23	269	2	1	1	2	11	11	246	5	9	1	35	4	245	21	177	1	182	12	1	12	733	164	2	3	12	4143	

Campylobacteriosis Summary

November 1, 2016 – October 31, 2017

121

Statewide campylobacteriosis cases in October (confirmed and probable)

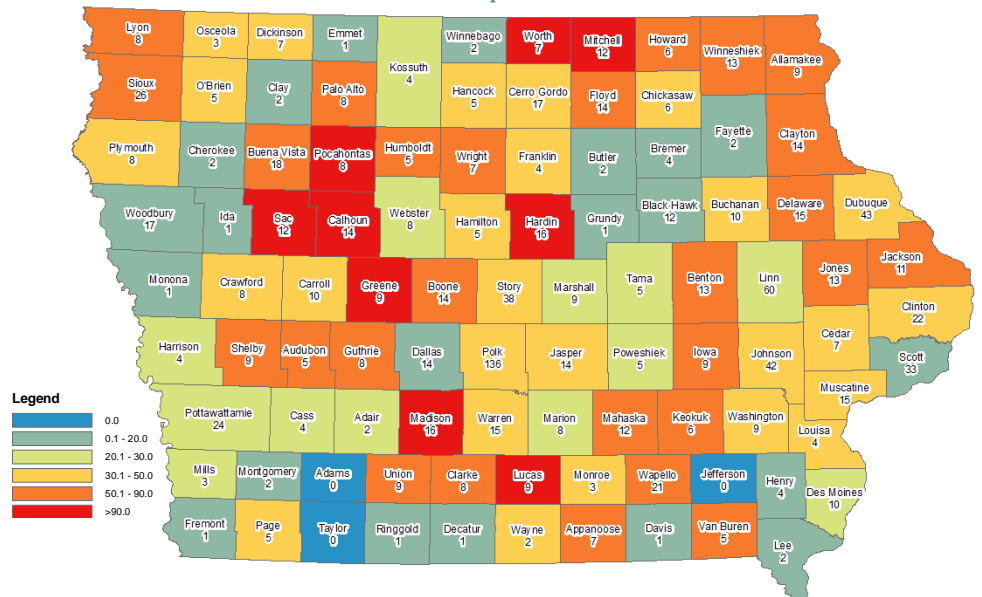
1091

Statewide campylobacteriosis cases in the past 12 months (confirmed and probable)

710

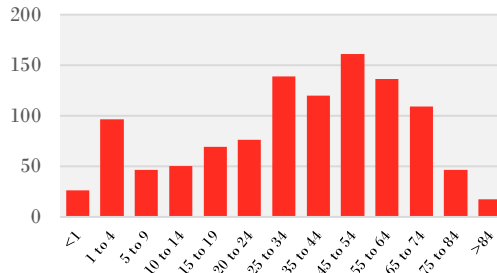
Average statewide campylobacteriosis cases in the previous 5 years for the same time period (confirmed and probable)

12 Month county rates of campylobacteriosis cases per 100,000

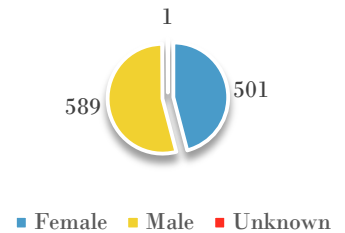


Note that rates based on <20 cases are not reliable and should be interpreted with caution

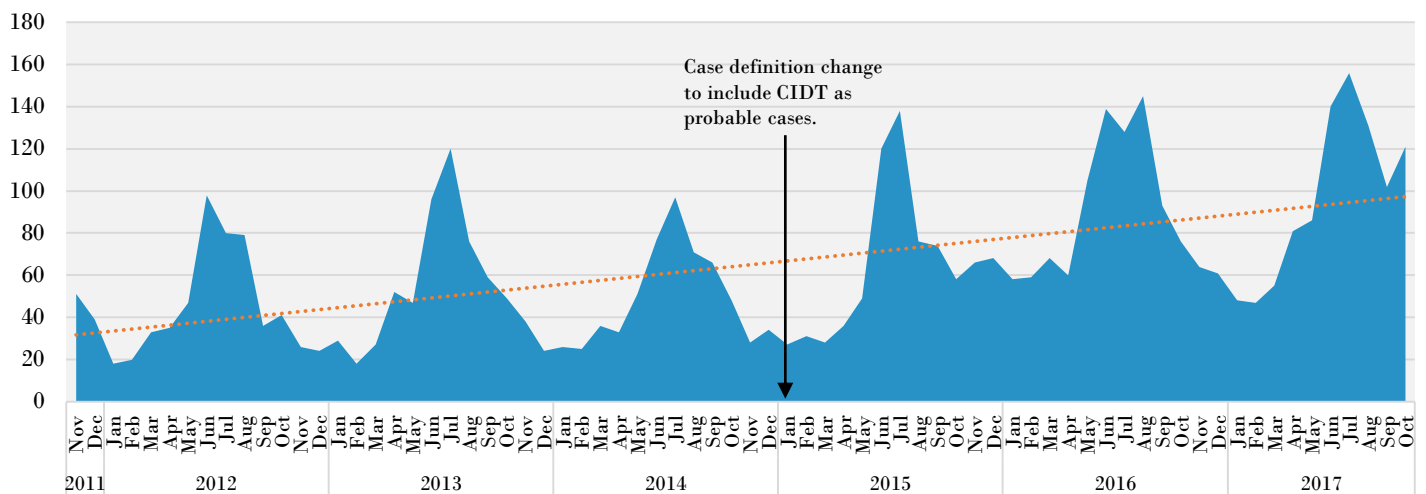
Campylobacteriosis cases by age past 12 months



Campylobacteriosis cases by gender past 12 months



Reported campylobacteriosis cases by date of onset or first lab result



Cryptosporidiosis Summary

November 1, 2016 – October 31, 2017

54

Statewide cryptosporidiosis cases in October (confirmed and probable)

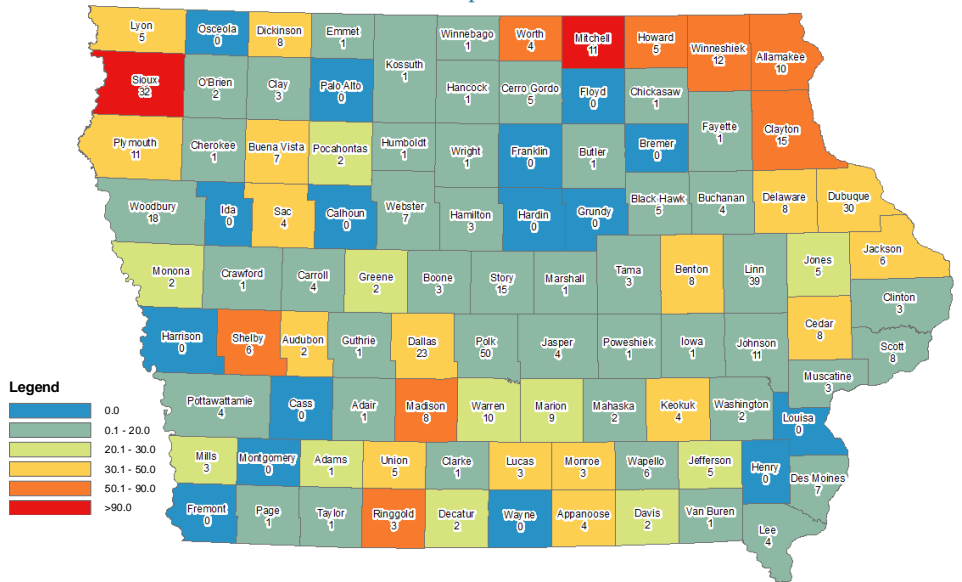
523

Statewide cryptosporidiosis cases in the past 12 months (confirmed and probable)

644

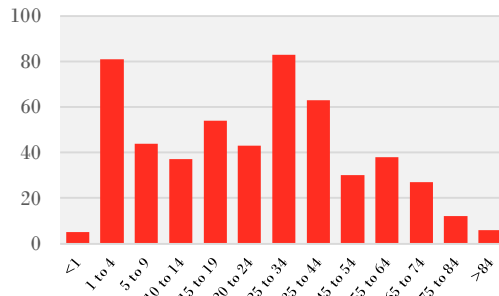
Average statewide cryptosporidiosis cases in the previous 5 years for the same time period (confirmed and probable)

12 Month county rates of cryptosporidiosis cases per 100,000

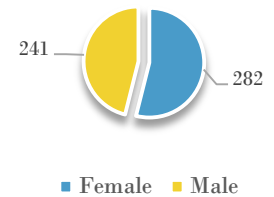


Note that rates based on <20 cases are not reliable and should be interpreted with caution

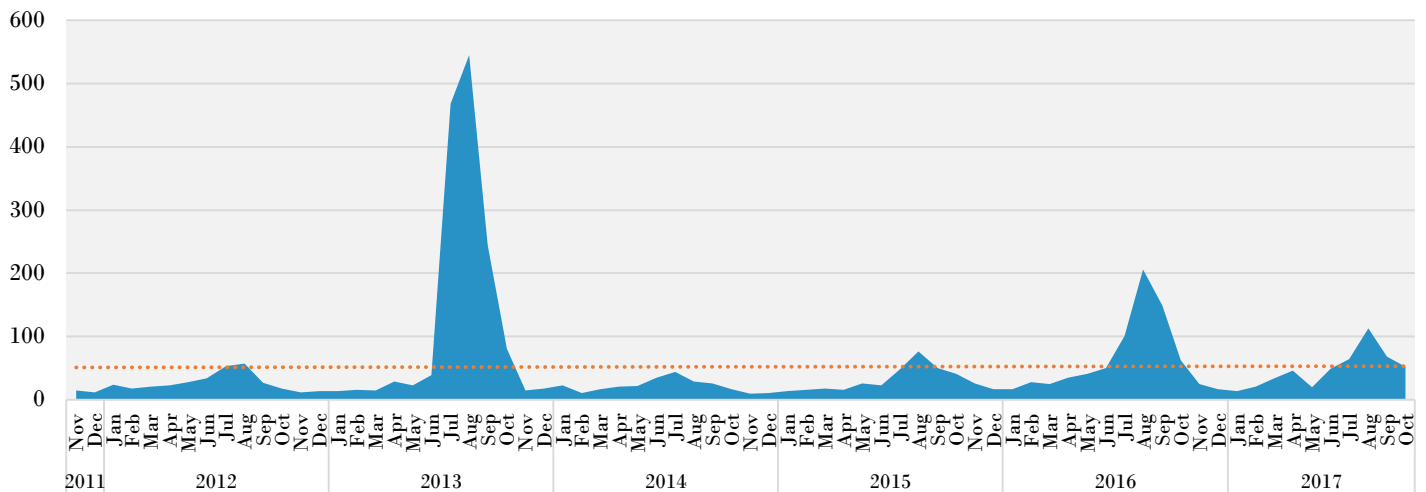
Cryptosporidiosis cases by age past 12 months



Cryptosporidiosis cases by gender past 12 months



Reported cryptosporidiosis cases by date of onset or first lab result



E. coli (STEC) Summary

November 1, 2016 – October 31, 2017

32

Statewide E. coli (STEC) cases in October (confirmed, probable, and suspect*)

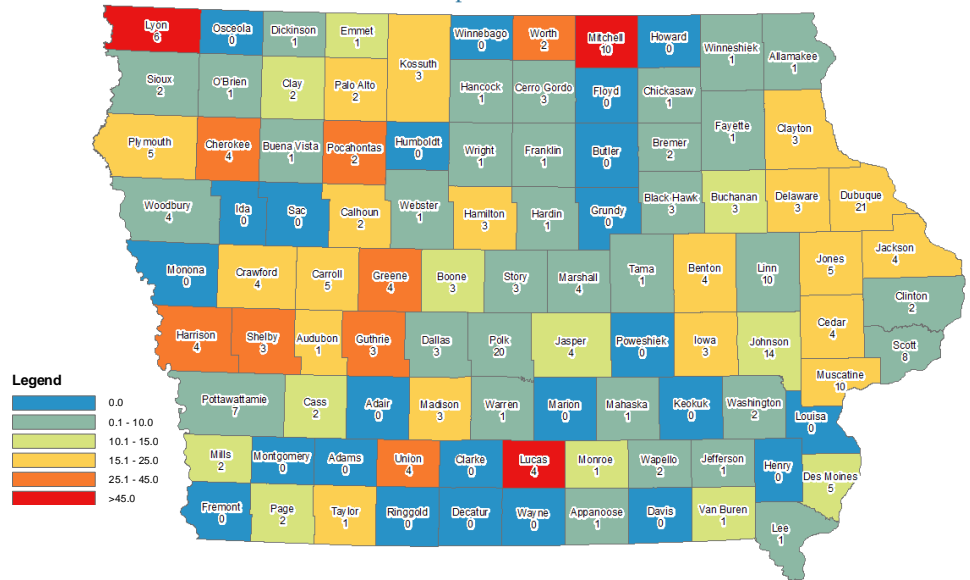
265

Statewide E. coli (STEC) cases in the past 12 months (confirmed and probable)

208

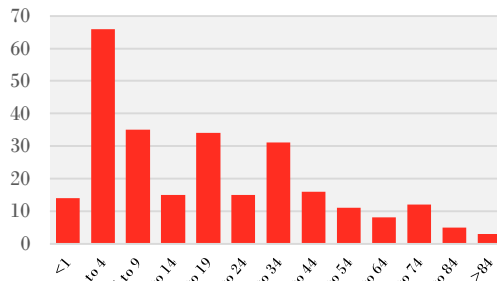
Average statewide E. coli (STEC) cases in the previous 5 years for the same time period (confirmed and probable)

12 Month county rates of E. coli (STEC) cases per 100,000

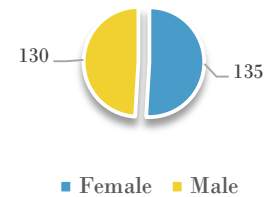


Note that rates based on <20 cases are not reliable and should be interpreted with caution

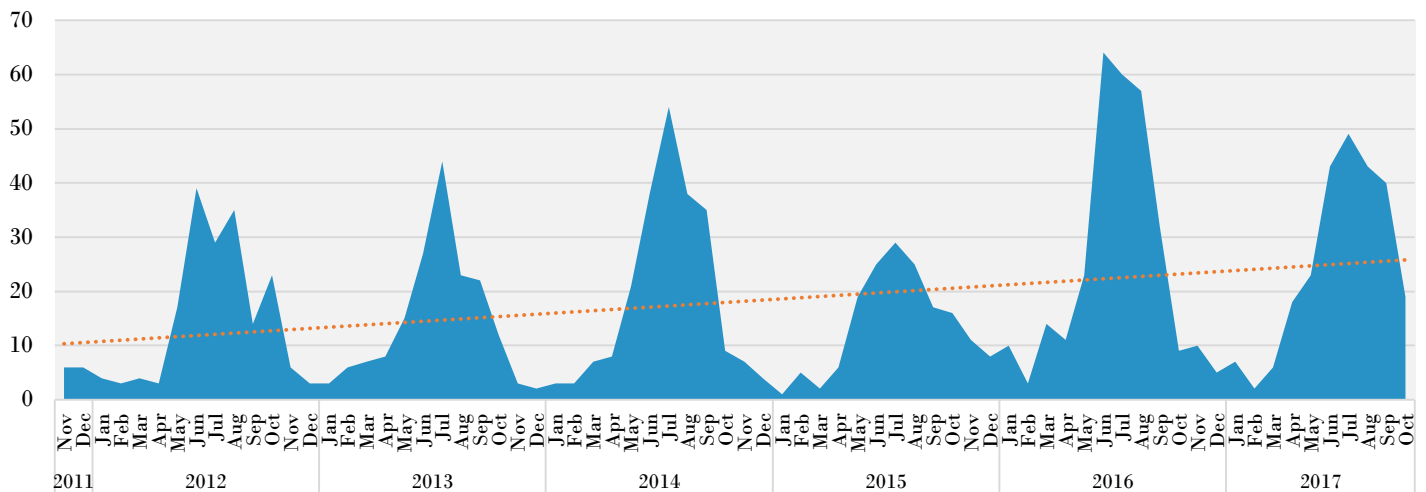
E. coli (STEC) cases by age past 12 months



E. coli (STEC) cases by gender past 12 months



Reported E. coli (STEC) cases by date of onset or first lab result



*CADE began using the suspect case definition as a final classification on Jan 1, 2017. Suspect cases are not included in the official case count but only meant to better estimate burden of disease. Any counts in this report from dates prior to Jan 1, 2017 do not include suspect cases.

Mumps Summary

November 1, 2016 – October 31, 2017

0

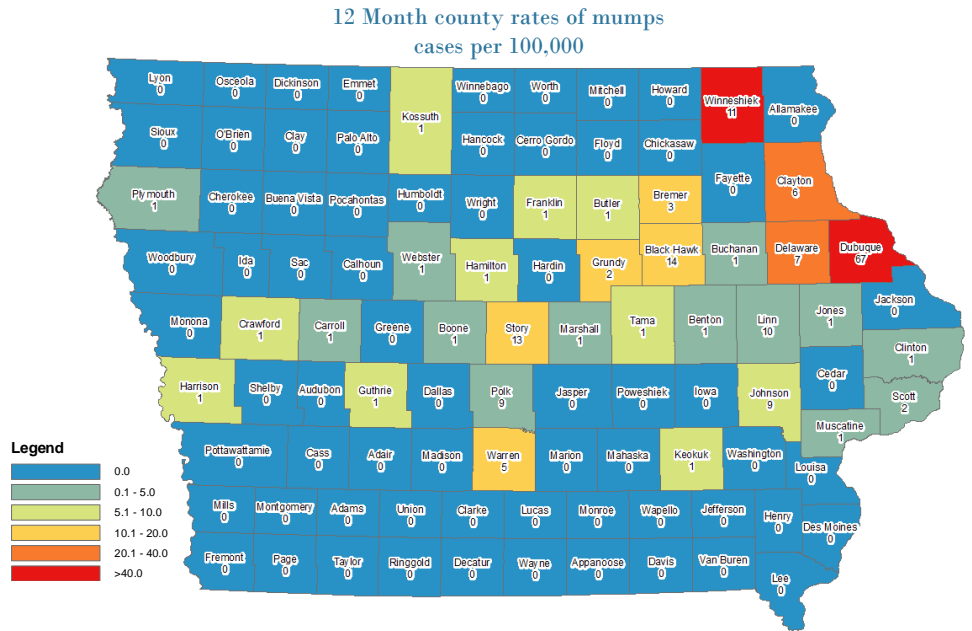
Statewide mumps cases in October (confirmed, probable, and suspect*)

177

Statewide mumps cases in the past 12 months (confirmed and probable)

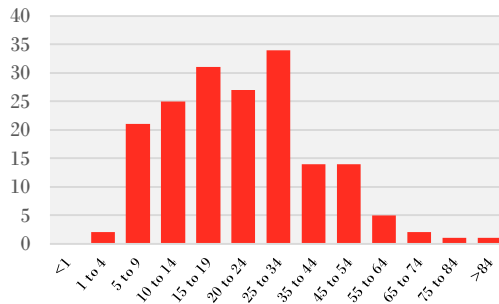
220

Average statewide mumps cases in the previous 5 years for the same time period (confirmed and probable)

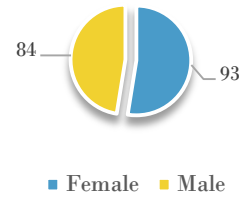


Note that rates based on <20 cases are not reliable and should be interpreted with caution

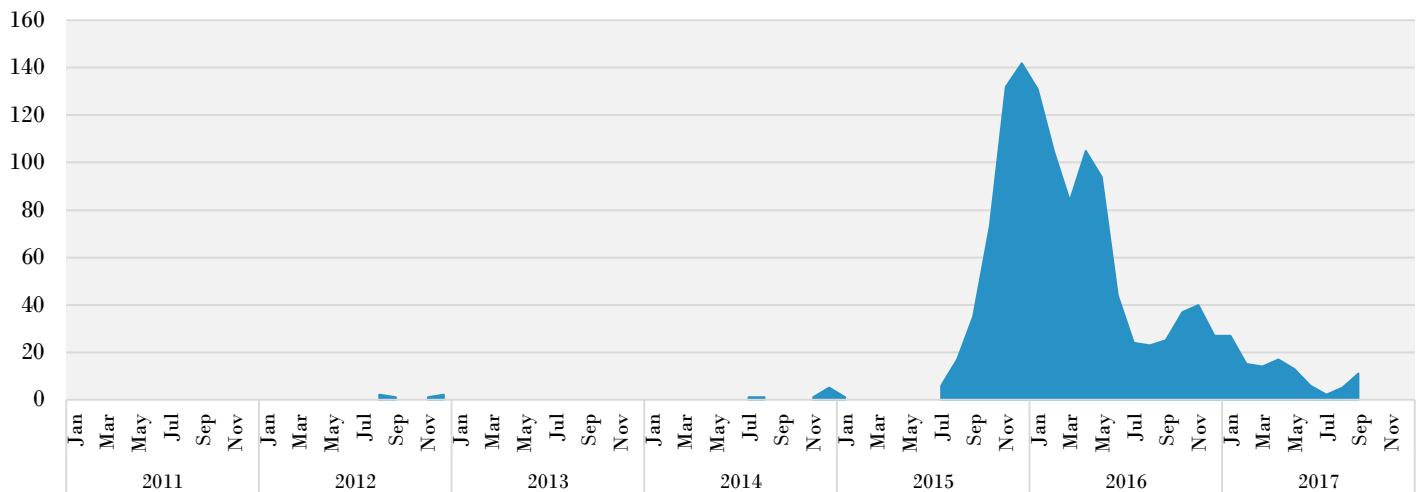
Mumps cases by age past 12 months



Mumps cases by gender past 12 months



Reported mumps cases by date of onset or first lab result



*CADE began using the suspect case definition as a final classification on Jan 1, 2017. Suspect cases are not included in the official case count but only meant to better estimate burden of disease. Any counts in this report from dates prior to Jan 1, 2017 do not include suspect cases.

Pertussis Summary

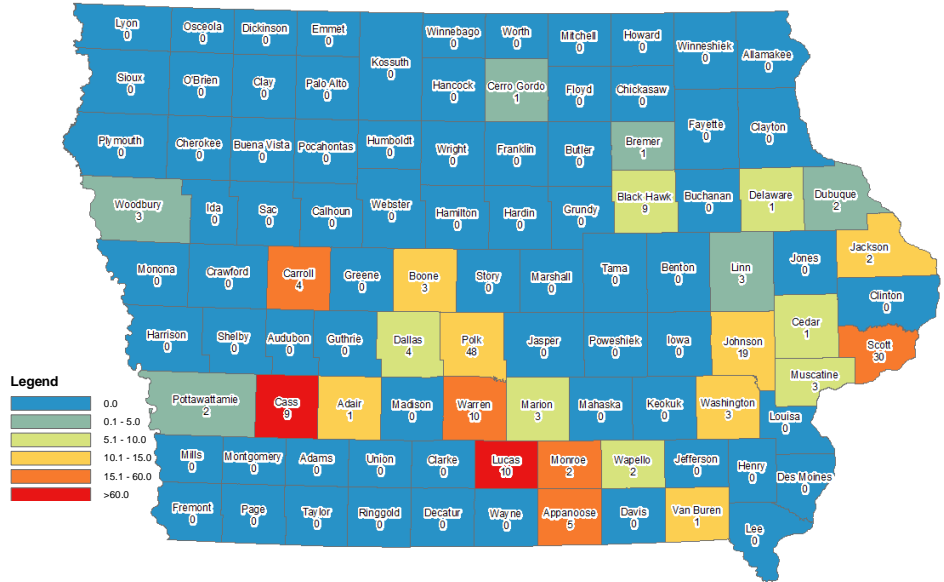
November 1, 2016 – October 31, 2017

12
Statewide pertussis cases in October (confirmed, probable, and suspect*)

182
Statewide pertussis cases in the past 12 months (confirmed and probable)

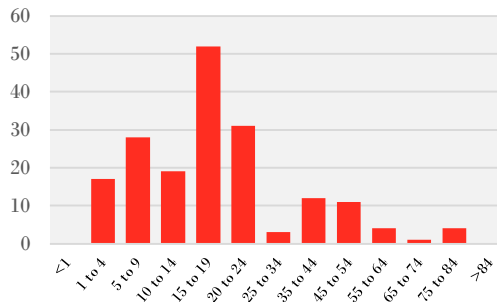
520
Average statewide pertussis cases in the previous 5 years for the same time period (confirmed and probable)

12 Month county rates of pertussis cases per 100,000

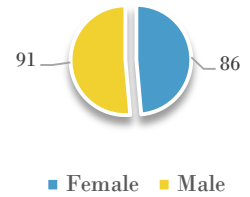


Note that rates based on <20 cases are not reliable and should be interpreted with caution

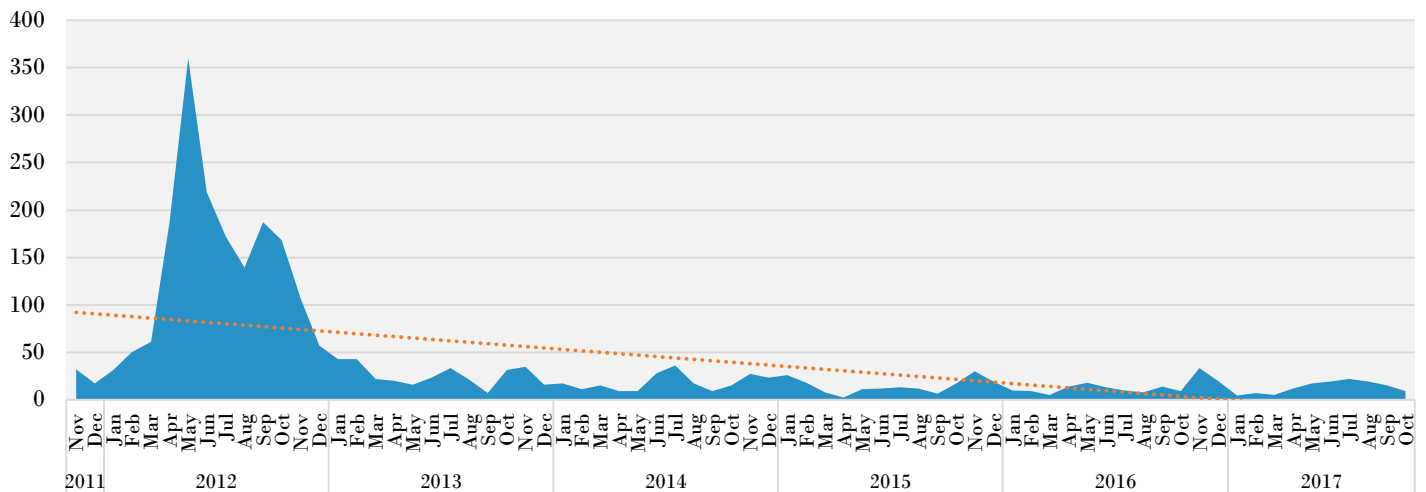
Pertussis cases by age past 12 months



Pertussis cases by gender past 12 months



Reported pertussis cases by date of onset or first lab result



*CADE began using the suspect case definition as a final classification on Jan 1, 2017. Suspect cases are not included in the official case count but only meant to better estimate burden of disease. Any counts in this report from dates prior to Jan 1, 2017 do not include suspect cases.

Salmonellosis Summary

November 1, 2016 – October 31, 2017

55

Statewide salmonellosis cases in October (confirmed and probable)

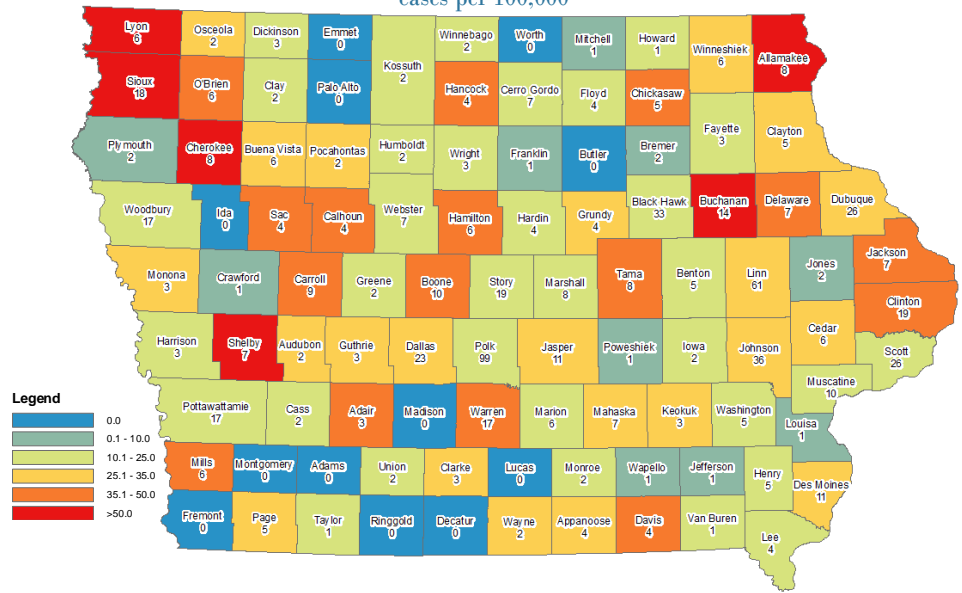
733

Statewide salmonellosis cases in the past 12 months (confirmed and probable)

615

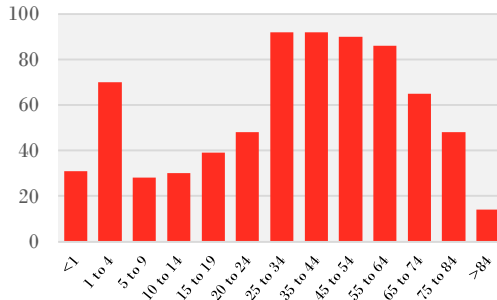
Average statewide salmonellosis cases in the previous 5 years for the same time period (confirmed and probable)

12 Month county rates of salmonellosis cases per 100,000

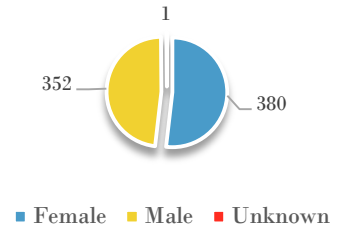


Note that rates based on <20 cases are not reliable and should be interpreted with caution

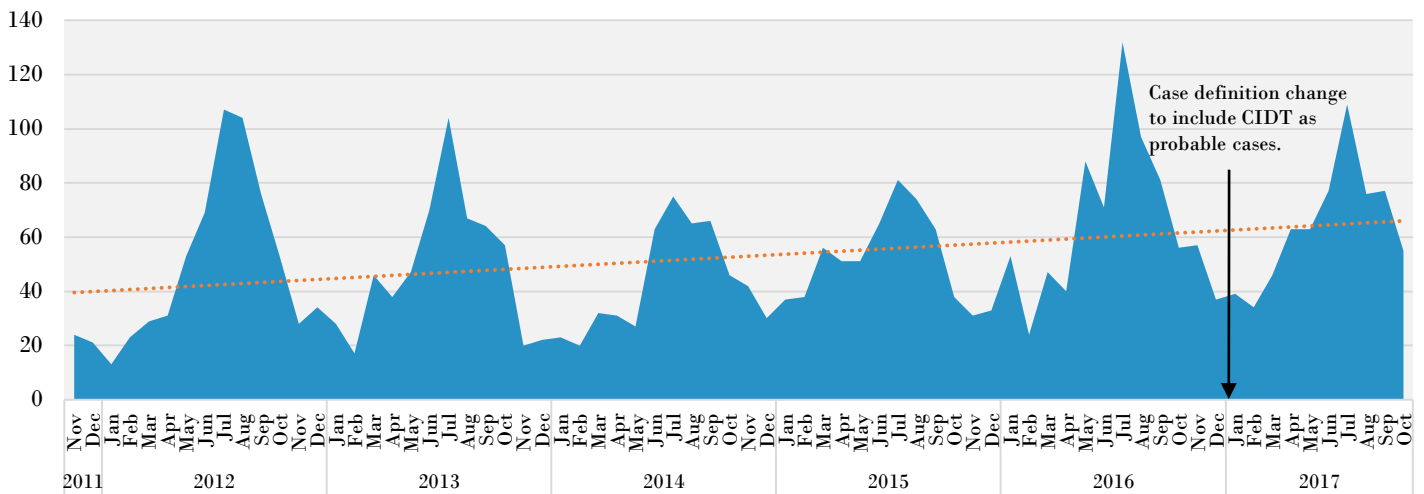
Salmonellosis cases by age past 12 months



Salmonellosis cases by gender past 12 months



Reported salmonellosis cases by date of onset or first lab report



Shigellosis Summary

November 1, 2016 – October 31, 2017

11

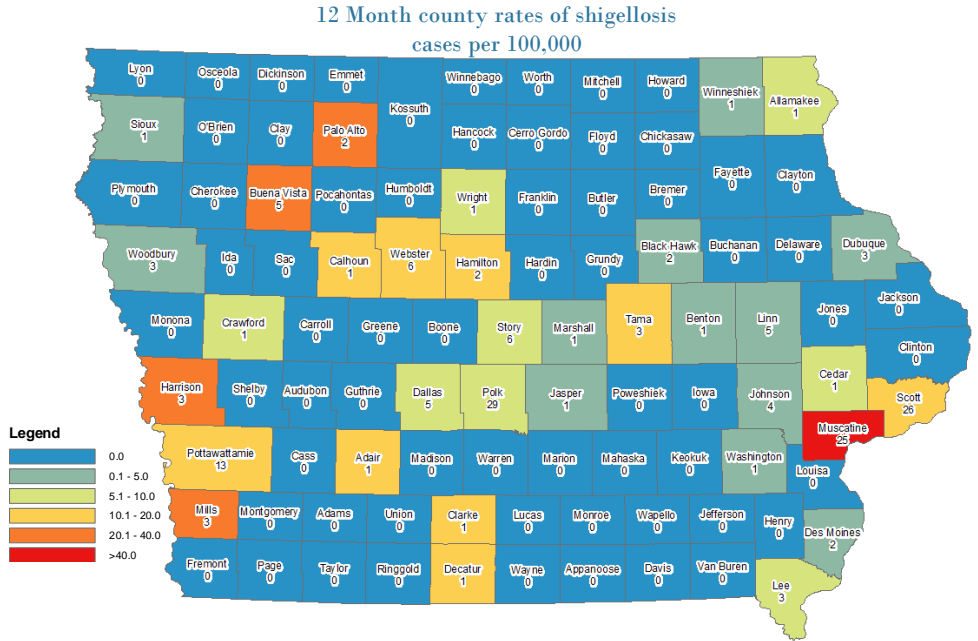
Statewide shigellosis cases in October (confirmed and probable)

164

Statewide shigellosis cases in the past 12 months (confirmed and probable)

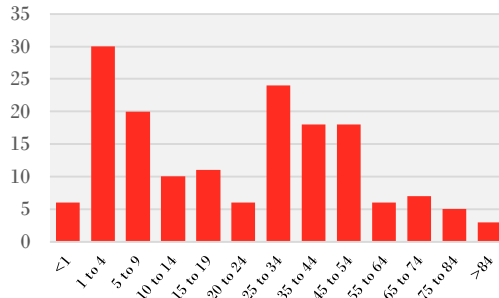
345

Average statewide shigellosis cases in the previous 5 years for the same time period (confirmed and probable)

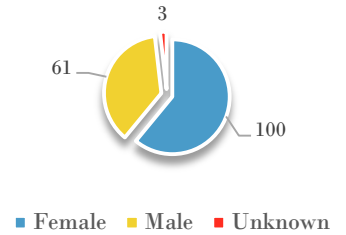


Note that rates based on <20 cases are not reliable and should be interpreted with caution

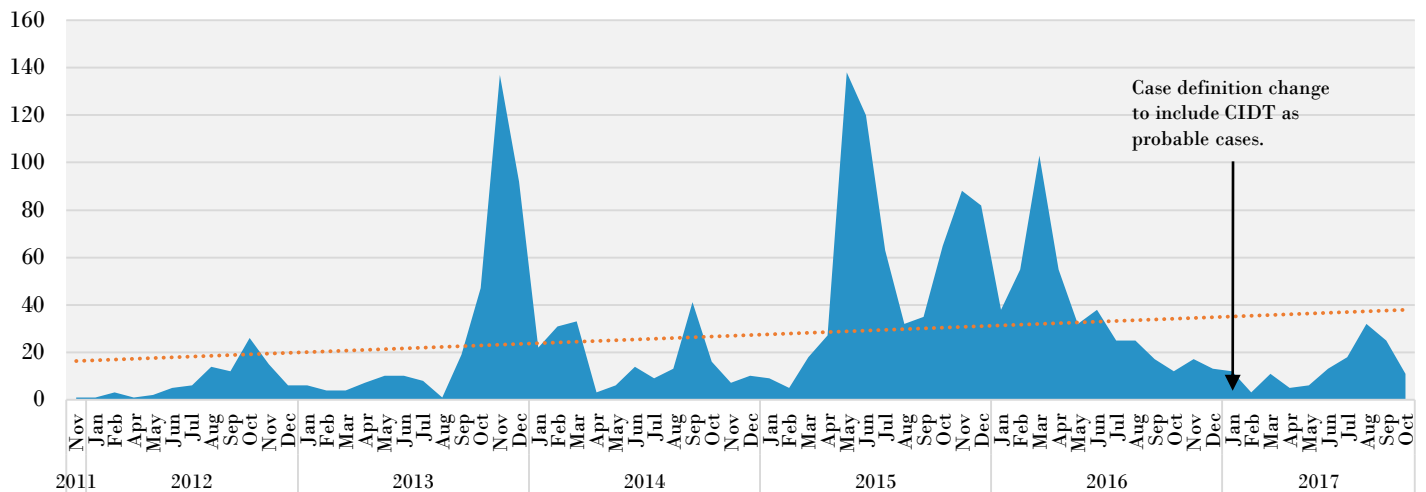
Shigellosis cases by age past 12 months



Shigellosis cases by gender past 12 months



Shigellosis cases by date of onset or first lab result



IOWA DEPARTMENT OF PUBLIC HEALTH

WWW.IDPH.IOWA.GOV

(515) 281-7689

CENTER FOR ACUTE DISEASE EPIDEMIOLOGY

WWW.IDPH.IOWA.GOV/CADE

1-800-362-2736

Gerd Clabaugh, MPA	Director
Sarah Reisetter, JD	Deputy Director
Ken Sharp, MPA, RS	Division Director
Patricia Quinlisk, MD, MPH	Medical Director/State Epidemiologist
Ann Garvey, DVM, MPH, MA	Public Health Veterinarian/ Deputy State Epidemiologist

CENTER FOR ACUTE DISEASE EPIDEMIOLOGY STAFF AND STUDENTS

Shawnice Cameron	Administrative Assistant
Amanda Casson, BA	Interview and Outbreak Response Team
Julie Coughlin, MPH	Vector-Borne Disease Epidemiologist
Chris Galeazzi, MPH	Field Epidemiologist Unit Lead
Amy Hoehne, MPH	Field Epidemiologist
Nick Kalas, MPH	Field Epidemiologist
Jill Newland	Iowa Disease Surveillance System (IDSS) Data Manager
Kemi Oni, MPH	Foodborne Disease Epidemiologist
Rob Ramaekers, MPH, CPH	Surveillance Unit Lead/Vaccine-Preventable Disease Program Coordinator
Scott Seltrecht, MPH	Field Epidemiologist
Kyli Torkelson, BS	Interview and Outbreak Response Team
Ngoc Tran, MPA, CPM	Iowa Disease Surveillance System (IDSS) Coordinator
Lisa Vitale, RN, BSN	Nurse Clinician
Diana Von Stein, MPH	Field Epidemiologist
Andy Weigel, MSW	Epidemiologist/Influenza Surveillance Program Coordinator
Nancy Wilde, BS, LPN	Epidemiologist/Healthcare-Associated Infection Program Coordinator
Ben Williamson	Interview and Outbreak Response Team