

Aviation System Plan 2010-2030 Individual Airport Report

Anita Municipal Airport - Kevin Burke Memorial Field



Prepared for:

IOWA DEPARTMENT OF TRANSPORTATION
OFFICE OF AVIATION



The preparation of this document was financed in part through an Airport Improvement Program grant from the Federal Aviation Administration (Project Number 3-19-0000-15-2009) as provided under Section 505 of the Airport and Airway Improvement Act of 1982, as amended. The contents do not necessarily reflect official views or the policy of the DOT or the FAA. Acceptance of this report by the FAA does not in any way constitute a commitment on the part of the United States to participate in any development depicted therein nor does it indicate the proposed development is environmentally acceptable in accordance with appropriate public laws.

Individual Airport Report

Anita Municipal Airport - Kevin Burke Memorial Field

The *Iowa Aviation System Plan* Individual Airport Report provides an overview of the aviation system in Iowa, as well as specific information related to the Anita Municipal Airport - Kevin Burke Memorial Field. Iowa's air transportation system plays a critical role in the economic development of the state and quality of life for Iowans. The *Iowa Aviation System Plan* evaluates existing conditions and makes recommendations for future development of the air transportation system to meet the needs of users over the next 20 years.



Airport sponsors and airport management can use the Individual Airport Report to better understand the role their airport plays in the state and use it as a guide to improve facilities and services for their aviation users. The Individual Airport Report is divided into two sections: Section One provides an overview of the statewide aviation system; and Section Two provides specific information for the Anita Municipal Airport - Kevin Burke Memorial Field. Additional information regarding the *Iowa Aviation System Plan* can be found at <http://www.iowadot.gov/avation.index.html>.

Section One – System Plan Overview

1.1 System Planning Process

Development of a meaningful and useful planning document centered on the analysis of data collected for the system's inventory and input received from public involvement on issues, concerns, and needs affecting aviation in Iowa. A comprehensive data collection effort, analysis, and significant public involvement guided the development of the 2010 *Iowa Aviation System Plan*. Contributions from the System Plan Technical Advisory Committee, comprised of individuals involved in different aspects of aviation across the state, as well as input received from the public at five input meetings, also guided the planning process. The process to complete the *Iowa Aviation System Plan* included the following steps:

- Identify goals, objectives, and performance measures.
- Inventory of existing aviation facilities and infrastructure.
- Update airport roles.
- Identify facility and service targets for airport roles.
- Forecast of aviation activity.
- Discuss emerging trends and technologies.
- Develop system recommendations.

1.2 System Plan Goals, Objectives, and Performance Measures

The identification of goals establishes the framework necessary to guide future development and maintenance of the system's airports based on key areas of existing and anticipated user needs. Meeting these goals allows airports to provide facilities and services that meet the air transportation demands of the economy, citizens, and visitors of the state.



The following six goals were established for the system to adequately meet user demands and achieve the overall vision of aviation in Iowa:

- **Safety and Security** – Provide a safe and secure system of airports.
- **Infrastructure and User Support** – Provide an airport system that meets existing and future user needs.
- **Accessibility** – Provide a system of airports that is adequately accessible from both the ground and the air.
- **Economic Support** – Support economic development through the air transportation system.
- **Planning** – Establish airport-related local planning to guide the development and operation of airports in Iowa.
- **Education and Outreach** – Provide local aviation education opportunities that promote understanding, safety, utilization, and career development.

Objectives identify specific means and methods needed to achieve each goal based on an assessment of existing and future user needs. Some objectives may target facilities or services, while others quantify future needs. Not all objectives will be applicable to each airport as some may be adapted to the role it serves within the aviation system.

Performance measures establish criteria to evaluate whether the system is meeting the objectives. Performance measures identify desired levels of the objectives to determine the system's progress towards achieving the goals. Typically expressed as a percentage, the performance measures are used to identify strengths and weaknesses that contribute towards the development of the Plan recommendations. The following lists the objectives and performance measures for each goal.



Goals, Objectives, and Performance Measures

Objectives	Performance Measures
Goal: Safety and Security	
<ul style="list-style-type: none"> Airports have clear approaches to primary runways. Airports have clear approaches to all runways. Airports have emergency response plans. Airports develop and implement security plans. 	<ul style="list-style-type: none"> Percent of airports with clear primary runway approaches. Percent of airports with clear approaches to all runways. Percent of airports with emergency response plans. Percent of airports with airport security plans.
Goal: Infrastructure and User Support	
<ul style="list-style-type: none"> Airports meet facility targets identified for their specific role. Airports meet service targets identified for their specific role. Primary runways maintained to PCI of 70 or higher. Airports maintain an overall PCI of 70 or higher. Based aircraft stored in covered hangars. 	<ul style="list-style-type: none"> <i>* Percent of airports meeting facility targets.</i> <i>* Percent of airports meeting at least 75% of service targets.</i> Percent of airports with primary runway PCI of 70 or greater. Percent of airports with overall airport PCI of 70 or greater. Percent of airports with aircraft storage for all based aircraft.
Goal: Accessibility	
<ul style="list-style-type: none"> A 30-minute or less drive time to a commercial or enhanced service airport. A two-hour or less drive time for most lowans to a commercial service airport A 30-minute or less drive time to an airport with weather reporting equipment. A 30-minute or less drive time to an airport with an instrument approach for most lowans. A 30-minute or less drive time to an airport with a vertically guided approach. 	<ul style="list-style-type: none"> Percent of population 30 minutes from a commercial service or enhanced service airport. Percent of population within two hours of a commercial service airport. Percent of population within 30 minutes of an airport with weather reporting equipment. Percent of population within 30 minutes of an airport with an instrument approach. Percent of population within 30 minutes of an airport with a vertically guided approach.
Goal: Economic Support	
<ul style="list-style-type: none"> Airports coordinate with local economic development offices, chambers of commerce, and city and county officials to include airport information in business promotion materials. Most of the employment is within a 30 minute drive time of a commercial or enhanced airport. Airports support aircraft owned and operated by companies doing business in proximity to an airport. 	<ul style="list-style-type: none"> Active coordination with local economic development offices, chamber of commerce, city, and county officials to include airport in business materials. Percent of employment within 30 minutes of a commercial service or enhanced airport.
Goal: Planning	
<ul style="list-style-type: none"> Airports have a current master plan or ALP. Airports are protected by local height zoning ordinances. Airports are included in city/county comprehensive plans or land use plans that address compatible land use around airports. 	<ul style="list-style-type: none"> <i>* Percent of airports with a current master plan and/or ALP.</i> Percent of airports protected by airport height zoning. Percent of airports with compatible land use planning through city/county comprehensive planning or land use plans.
Goal: Education and Outreach	
<ul style="list-style-type: none"> Airports establish regular communication programs (newsletters, press releases, web sites, or social media.) Airports have based rental aircraft and availability of regular flight instruction. Airports host pilot safety programs. Airports host annual aviation events such as fly-ins, air shows, and static aircraft displays. Airports host additional types of public events such as business after hours receptions or open houses. Airports host organized youth education activities such as Young Eagles events or youth camps. 	<ul style="list-style-type: none"> Percent of airports with regular communication programs. Percent of airports that have based rental aircraft and regular flight instruction. Percent of airports that host pilot safety programs. Airports host annual aviation events. Airports host additional types of public events. Airports host organized youth education activities.

Note: * = Measurement criterion to evaluate performance varies by role.

1.3 Airport Roles

Airports in Iowa serve varying types of users and levels of demand. Airports were classified into one of five airport roles based upon their capability to support various types of aircraft and aviation users. Airports were assigned to a role based on currently meeting specific facility and services criteria. As conditions change and an airport meets the criteria for a higher level role, the plan is flexible to recognize role changes. The following table lists each role and its classification criteria while the following graphic identifies the location of each system airport.

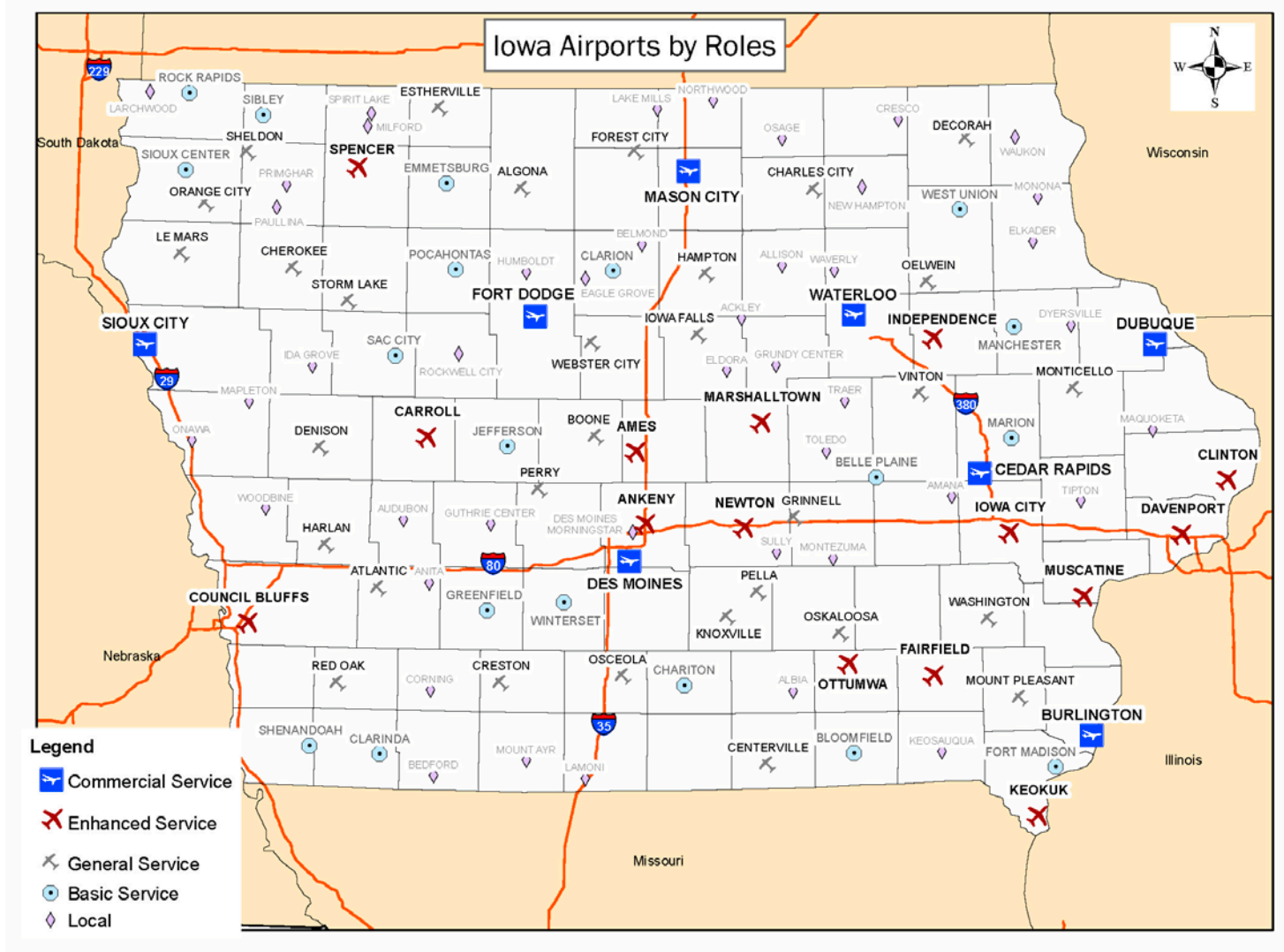
Role Classification Criteria

System Role	Criteria
Commercial Service	<p>Commercial Service airports support some level of scheduled commercial airline service, have the infrastructure and service available to support a full range of general aviation activity, meet most needs of the aviation system, and serve as essential transportation and economic centers of the state.</p> <ul style="list-style-type: none"> • Commercial airline service.
Enhanced Service	<p>Enhanced Service airports have runways of 5,000 feet or greater in length, facilities and services that can accommodate a full range of general aviation activity including most business jets, serve business aviation, and are regional transportation centers and economic catalysts.</p> <ul style="list-style-type: none"> • 5,000 foot or greater paved runway. • Airport Reference Code (ARC) of C-II or greater. • Full time staffing during regular weekday and weekend business hours, available 24 hours a day. • Availability of most based services including aircraft maintenance, flight training, rental aircraft, and aircraft charter. • Availability of jet fuel. • Weather observing system located on airport.
General Service	<p>General Service airports have runways 4,000 feet or greater in length, facilities and services customized to support most general aviation activity including small to mid-size business jets, and service as a community economic asset.</p> <ul style="list-style-type: none"> • 4,000 foot or greater paved runway. • Availability of some based services including aircraft maintenance, flight training, rental aircraft, and aircraft charter. • Staffing during regular business hours.
Basic Service	<p>Basic Service airports have runways 3,000 feet or greater in length with facilities and services customized to meet local aviation demands.</p> <ul style="list-style-type: none"> • 3,000 feet or greater paved runway. • Availability of aircraft fuel. • Some availability of airport or FBO personnel or on-call availability 24 hours.
Local Service	<p>These airports support local aviation activity, offer few airport services, have turf runways, or are unable to meet criteria defining any other role.</p> <ul style="list-style-type: none"> • Turf runways. • Airports not meeting criteria in any other roles.



AVIATION SYSTEM PLAN
2010-2030

Iowa Airports by Roles



1.4 Facility and Service Targets

Facility and service targets were established to help airports, within a specific role, meet the needs of their users. While not all targets are required for inclusion in a particular role, these are recommended levels of service and/or facility targets appropriate for the type of use associated with each role. Airports are encouraged to meet or exceed suggested targets for their role to satisfy local and aviation system needs.

The targets are separated into two main categories: airside and landside facilities, and services. Targets for each role vary based on the needs of aviation users for that role. The Enhanced Service airports, for example, will have more targets to meet the needs of business users. There are fewer targets for Local Service airports since they serve users with fewer requirements for operation. In the table below, targets for Commercial Service airports are combined with Enhanced Service targets, since in most categories, Commercial Service airports will exceed targets. Targets required for inclusion in a role are highlighted in red in the following facility and service tables.

Facility Targets

Target Description	Commercial/Enhanced Service Targets	General Service Targets	Basic Service Targets	Local Service Targets
Airside				
Airport Reference Code	C-II	B-II	B-I or below	A-I
Primary Runway Length	Minimum 5,000 ft	Minimum 4,000 ft	3,000 ft	Not an objective
Primary Runway Width	Minimum 100 ft	Minimum 75 ft	Minimum 60 ft	Minimum 50 ft
Type of Parallel Taxiway	Full parallel	Turnarounds meet standards (both ends)	Exits as needed	Not an objective
Type of Runway Approach	Vertical guidance	Non-precision	Visual	Visual
Runway Lighting	MIRL	MIRL	LIRL	Not an objective
Taxiway Lighting	MITL	MITL	Not an objective	Not an objective
Visual Guidance Slope Indicator	Both runway ends (or ILS)	Both runway ends	Not an objective	Not an objective
Runway End Identifier Lights (as required)	Both runway ends (or ILS)	Both runway ends	Not an objective	Not an objective
Rotating Beacon	Yes	Yes	Yes	Not an objective
Lighted Wind Indicator	Yes (multiple as needed)	Yes	If open for night	If open for night
RCO Facilities	Tower or RCO	Not an objective	Not an objective	Not an objective
Wind coverage or crosswind runway	Crosswind runway or 95% wind coverage for NPIAS facilities	Crosswind runway or 95% wind coverage for NPIAS facilities	Not an objective	Not an objective
Landside				
Covered storage	100% of based aircraft	100% of based aircraft	100% of based aircraft	Not an objective
Overnight storage for business aircraft	Typical average aircraft/business user demand	Typical average aircraft/business user demand	Not an objective	Not an objective
Aircraft apron	100% of average daily transients	100% of average daily transients	50% of average daily transients	Not an objective
Terminal/administration building	Yes	Yes	Waiting area	Not an objective
Paved entry/terminal parking	Yes	Yes	Not an objective	Not an objective

Note: Targets highlighted in **RED** are requirements for role classification

Service Targets

Target Description	Commercial/Enhanced Service Targets	General Service Targets	Basic Service Targets	Local Service Targets
Services				
Fuel (type & hours)	100LL & Jet A - 24 hour - single point	100LL	100LL	Not an objective
Weekday hours of operation	Standard business hours, after hours on-call	Standard business hours, after hours on-call	On-call	Not an objective
Weekend hours of operation	Standard business hours, after hours on-call	Standard business hours, after hours on-call	On-call	Not an objective
Ground transportation	Courtesy car/car rental available	Courtesy car/car rental available	Not an objective	Not an objective
Food & Beverage	Vending	Vending	Not an objective	Not an objective
Posted contact info	Yes	Yes	Yes	Yes
Internet access	Yes	Yes	Not an objective	Not an objective
Restroom	Yes	Yes	Yes	Not an objective
Pilot area	Yes	Yes	Not an objective	Not an objective
Security	Security plan	Security plan	Security plan	Security plan
Snow removal	Timely snow removal	Timely snow removal	Snow removal	Not an objective
Rental aircraft	Based	Based	Not an objective	Not an objective
Flight training	Available	Available	Available	Not an objective
Aircraft maintenance/repair	Based	Based	Not an objective	Not an objective
Aircraft charter	Based	Available	Available	Not an objective
Weather reporting/flight planning capabilities	Yes	Yes	Not an objective	Not an objective

Note: Targets highlighted in **RED** are requirements for role classification

1.5 System Forecasts, Trends, and Technology

During the past decade, aviation activity was impacted by economic conditions and events that were difficult to predict. Projections for the next twenty years indicate commercial airline enplanements, based aircraft, and operations are expected to experience slow growth. The 2010-2030 Federal Aviation Administration (FAA) Aerospace Forecast projects that the number of active aircraft throughout the planning period will increase at one percent (1.0%) annually, while the number of based aircraft in the state is projected to be slightly higher at 1.25 percent (1.25%). Aircraft operations are anticipated to increase at one-half of one percent annually.

Several anticipated trends and developing technologies will affect aviation in Iowa throughout the planning period. It is important the system is prepared to adapt to these changes to meet the short- and long-term needs of aviation users. Topics that could significantly impact aviation in Iowa include the implementation of the Next Generation Air Transportation System (NextGen), environmental sustainability, and future aircraft types.

1.6 System Plan Recommendations

Federal, state, and local airport sponsors all have a role in providing adequate infrastructure and services to support the demands of the air transportation system. Review of the system's performance and comments received from the public and the System Plan Technical Advisory Committee identified recommended improvements and initiatives. Recommendations address specific goals and general concepts for the system. A cooperative approach towards the implementation of plan recommendations is necessary for the Iowa aviation system to meet the air transportation demands of the state. Continued management of essential programs and services by the Iowa Department of Transportation (Iowa DOT) Office of Aviation helps strengthen the safety and security of the state aviation system.



Airport sponsors own and operate the airports, having ultimate responsibility for daily and long term operations and maintenance. Recommendations in the *Iowa Aviation System Plan* provide a guide for airport sponsors to assess their role to ensure that Iowa has safe, quality facilities and services to meet the air transportation needs. Recommendations to enhance safety of the system include actively mitigating obstructions, developing and enforcing compatible land use controls, actively mitigating wildlife hazards, and developing emergency response plans. Airport sponsors are encouraged to engage their community leaders and stakeholders in developing a strategic plan to guide the future of the airport and its role in economic development. More specific recommended actions are detailed beginning on Page 13 of this report.

1.7 System Plan Summary

The Iowa aviation system is an integrated network of users, aircraft, businesses, airports, technologies, and services that supports the economy and serves as a transportation resource for both the state and the nation. The Iowa DOT, in conjunction with the FAA and individual owners and operators of each airport, continue to strive towards meeting system goals and objectives to maintain a safe, efficient, and effective aviation system. As airports respond to changing needs of aviation users and the communities they serve, it is important to consider both facilities and services identified in the targets established for airport roles.

Maintaining and developing the airports' infrastructure and services is critical to the continued health of Iowa's economy and the quality of life for Iowans. Through addressing needs identified in the recommendations, the *Iowa Aviation System Plan* will help ensure users of the aviation system are offered safe, quality facilities and services that support the air transportation demands of Iowa for the next twenty years.

Section Two – Individual Airport Overview

This section provides information specific to the Anita Municipal Airport - Kevin Burke Memorial Field, including a brief history of the airport, forecasts of operations and based aircraft, performance measure recommendations, a summary of capital improvement projects, and an airport fact sheet.

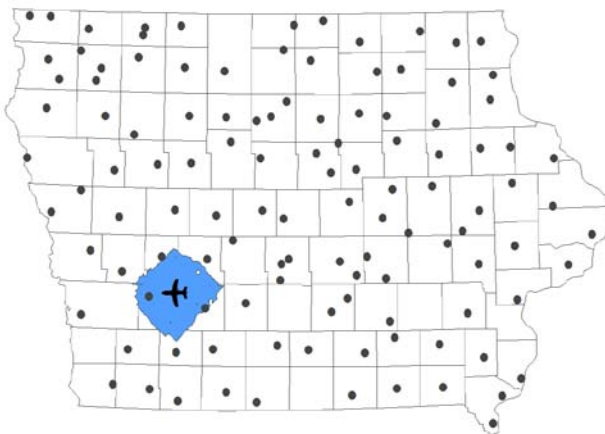
2.1 Airport Summary

The Anita Municipal-Kevin Burke Memorial Field Airport is owned and operated by the City of Anita. An airport commission, with members appointed by the city, was established to manage and operate the airport. The FAA does not include the airport in the National Plan of Integrated Airport Systems (NPIAS), which means that it is not eligible for federal funding.

The *Iowa Aviation System Plan* identifies the Anita Municipal-Kevin Burke Memorial Field Airport as a Local Service airport. Local Service airports support limited local aviation activity and may have only turf runways or runways less than 3,000'. Most Local Service airports have very limited, if any, airport services. Specific airport information can be found in the Airport Fact Sheet located in the appendix of this report.

The Anita Municipal-Kevin Burke Memorial Field Airport serves the general aviation needs of northeast Cass County and the City of Anita. The airport is located on the south edge of the City of Anita. Local access is provided from Iowa Highways 83 and 148.

30 Minute Drive Time



Airport Location



2.2 Airport Current Conditions & Facilities

A summary of general airport information, facilities, and services at the Anita Municipal Airport - Kevin Burke Memorial Field is included in the Fact Sheet at the end of this report. Airport information in the Fact Sheet reflects updated information and may vary from the 2010 data used in the *Iowa Aviation System Plan* technical report. The Anita Municipal Airport - Kevin Burke Memorial Field has been classified as an Local Service airport. This classification is relevant to specific facility and service targets as well as performance measures.

2.3 Airport Forecasts

Aviation demand projections for based aircraft and aircraft operations were prepared for each of the 117 public use airports in Iowa’s aviation system. A number of different FAA forecasting techniques were utilized in the projection of aviation activity at each airport ranging from subjective judgment to mathematical modeling based on historical trends. Data obtained from airport managers, the Office of Aviation, the 2010-2030 FAA Aerospace Forecast, and the FAA Air Traffic Activity Data System (ATADS) also contributed to the projections developed for each airport.

Based aircraft projections were developed for each airport by multiplying a compound annual growth rate (CAGR) of 1.25 percent (1.25%) to the number of current (2010) based aircraft at each airport as reported by airport managers. Aircraft operations were projected by multiplying the forecasted number of based aircraft by an adopted Office of Aviation estimation guideline outlined in FAA Order 5090.3C, *Field Formulation of the National Plan of Integrated Airport Systems (NPIAS)*. This is an acceptable procedure to forecast operations where limited or no historical data may be available, permitting a single methodology to be applied to all airports. Airports with 1 to 30 based aircraft forecasted were assigned 250 operations per aircraft, while airports with 31 to 99 based aircraft were assigned 350 operations per aircraft. Airports forecasted with 100 or more aircraft were assigned 450 operations per aircraft. The based aircraft and operations projections developed for Anita Municipal Airport - Kevin Burke Memorial Field using the methodologies as described previously are presented in the following table.

Airport Forecasts

Forecast Year	Based Aircraft	Operations
2010	3	750
2015	3	750
2020	3	750
2025	4	1,000
2030	4	1,000

Sources

Based aircraft: 2010 Airport Manager Survey, Mead & Hunt, Inc.
Operations: FAA Order 5090.3C, FAA Aerospace Forecast 2010-2030, FAA ATADS

2.4 System Performance by Airport

Although progress has been made to achieve the goals and objectives, continuous improvements are necessary to provide Iowa with an air transportation system that supports the economy and quality of life demands. Anita Municipal Airport - Kevin Burke Memorial Field has a role in meeting these goals by striving to meet the individual performance measures that are applicable to its current role as an Local Service airport. Each airport plays a role in meeting the goals and objectives. Individual airports can assess their specific



performance, to determine what is appropriate to meet their needs, taking into account the recommendations from the system plan. It is understood that full implementation of some of the targets may not be feasible; however, it is important to identify goals and work to attain those that are reasonable.

2.4.a Recommendations to Support the System Plan Goals

Evaluation of how well the Anita Municipal Airport - Kevin Burke Memorial Field is meeting the objectives identified areas that could be improved to achieve the system plan goals. Focusing future improvements to enhance facilities, services, and planning to meet the objectives, while maintaining existing performance in areas meeting or exceeding desired conditions, contributes to a vibrant aviation system. Recommendations included on Page 14 list actions the airport may consider to benefit users of aviation in Iowa. In addition to specific recommendations to meet system goals and objectives, the *Iowa Aviation System Plan* recommends that airport sponsors and managers take the following actions to enhance a safe and effective operating environment:

- Reduce on-airport wildlife habitat and mitigate hazardous wildlife activity to limit potential safety concerns.
- Engage community leaders and stakeholders in developing a strategic plan to guide the development of the airport, coordinating with economic development interests.
- Develop a welcome image for visitors arriving by air and provide directional signage to the business community to ensure a connection.
- Actively work to protect runway approaches by developing or enforcing height and compatible land use zoning.

2.4.b Recommendations to Achieve the Facility and Service Targets

Facility and service targets identify levels of infrastructure and services that are desirable to effectively meet user needs. Though it may not be feasible to meet or exceed all targets, the airport is encouraged to develop and maintain facilities and services to levels defined for the Local Service role. The tables presented on Page 15 and Page 16 identify what is recommended for the Anita Municipal Airport - Kevin Burke Memorial Field to achieve each target.

Airport Recommendations to Support the Goals of the Iowa Aviation System

Objective	Achieving Performance/Recommendation
Goal: Safety and Security	
• Airport has clear approaches to primary runway.	YES - Continue to preserve clear approaches to primary runway.
• Airport has clear approaches to all runways.	YES - Continue to preserve clear approaches to all runways.
• Airport has an emergency response plan.	NO - Create an airport emergency plan and update annually.
• Airport develops and implements a security plan.	NO - Create an airport security plan and update annually.
Goal: Infrastructure and User Support	
• Airport meets facility targets identified for its role.	YES - Continue to maintain and preserve facilities to meet or exceed targets by role.
• Airport meets service targets identified for its role.	NO - Improve and continue to provide services that meet or exceed targets by role.
• Primary runway maintained to PCI of 70 or higher.	Not an objective - turf runway <i>Primary runway PCI: turf</i>
• Airport maintains overall PCI of 70 or higher.	Not an objective - turf runway <i>Overall PCI Rating: n/a - turf</i>
• All based aircraft stored in covered hangars.	NO - Construct additional hangars to provide covered storage for all based aircraft.
Goal: Economic Support	
• Airport coordinates with local officials to include information in business promotional materials.	Establish cooperative relationships with local economic development offices, chambers of commerce, and city and county officials to include airport information in business promotional materials.
Goal: Planning	
• Airport has a current master plan or ALP.	Not an objective - Though not required for Local airports to achieve the Planning goal, development of an Airport Layout Plan is encouraged. Last Airport Layout Plan update: No ALP
• Airport is protected by local height zoning ordinances.	NO - Coordinate with local communities to enact a height zoning ordinance. Update the zoning ordinance as needed and monitor its enforcement.
• Airport compatible land use is included in city/county comprehensive or land use plans.	NO - Coordinate with city and county officials to address compatible land use in a comprehensive or land use plan. Review and update land uses as needed with each plan update.
Goal: Education and Outreach	
• Airport has a regular communication program.	NO - Establish a regular communication program to inform interested parties on airport news and events through newsletters, press releases, web sites, and social media.
• Airport has based rental aircraft and availability of flight instruction.	NO - Provide based rental aircraft and establish a method to make flight instruction available at the Airport.
• Airport hosts pilot safety programs.	NO - Coordinate with the FAA, industry associations, and other aviation organizations to host pilot safety programs.
• Airport hosts annual aviation events, additional types of public events, and organized youth educational activities.	Increase efforts to host annual aviation events such as fly-ins and air shows, additional types of public events such as open houses, tours, conferences, and meetings, and organized youth educational activities such as aviation camps, Young Eagles programs, and internships.

Airside and Landside Facility Target Needs

Target Description	Existing Condition		Target	Recommendation
Airside Facilities				
Airport Reference Code	A-I		A-I	Maintain airfield to A-I design standards
Primary Runway Length	2,825 ft		Not an objective	n/a
Primary Runway Width	95 ft		Minimum 50 ft	Maintain at least 50 ft runway width
Type of Parallel Taxiway	No taxiways		Not an objective	n/a
Type of Runway Approach	Visual		Visual	Maintain a visual approach
Runway Lighting	LIRL		Not an objective	n/a
Taxiway Lighting	none		Not an objective	n/a
Visual Guidance Slope Indicator	Rwy 05	Rwy 23	Not an objective	n/a
	none	none		
Runway End Identifier Lights (as required)	No	No	Not an objective	n/a
Rotating Beacon	No		Not an objective	n/a
Lighted Wind Indicator	Yes		If open for night	Maintain lighted wind indicator
RCO Facilities	none		Not an objective	n/a
Wind coverage or crosswind runway	Non-NPIAS airport		Not an objective	n/a
Landside Facilities				
Covered storage for based aircraft	0% of based aircraft		Not an objective	n/a
Overnight storage for business aircraft	No		Not an objective	n/a
Aircraft apron	0% of average daily transients		Not an objective	n/a
Terminal/administration building	No terminal		Not an objective	n/a
Paved entry/terminal parking	none		Not an objective	n/a

Service Target Needs

Target Description	Existing Condition	Target	Recommendation
Services			
Fuel (type & hours)	Type: No fuel 24 hour availability: No	Not an objective	n/a
Weekday hours of operation	none	Not an objective	n/a
Weekend hours of operation	none	Not an objective	n/a
Ground Transportation	none	Not an objective	n/a
Food & Beverage	No	Not an objective	n/a
Posted contact info	Yes	Yes	Continue to post and update after hours contact information
Internet access	No internet	Not an objective	n/a
Restroom	Number of restrooms: none	Not an objective	n/a
Pilot area	No	Not an objective	n/a
Security plan	No	Security plan	Develop a security plan and update annually
Snow removal	Plowing	Not an objective	n/a
Rental aircraft	none	Not an objective	n/a
Flight training	none	Not an objective	n/a
Aircraft maintenance/repair	none	Not an objective	n/a
Aircraft charter	none	Not an objective	n/a
Weather reporting/ flight planning capabilities	No	Not an objective	n/a

Anita Municipal Airport - Kevin Burke Memorial Field
Fact Sheet

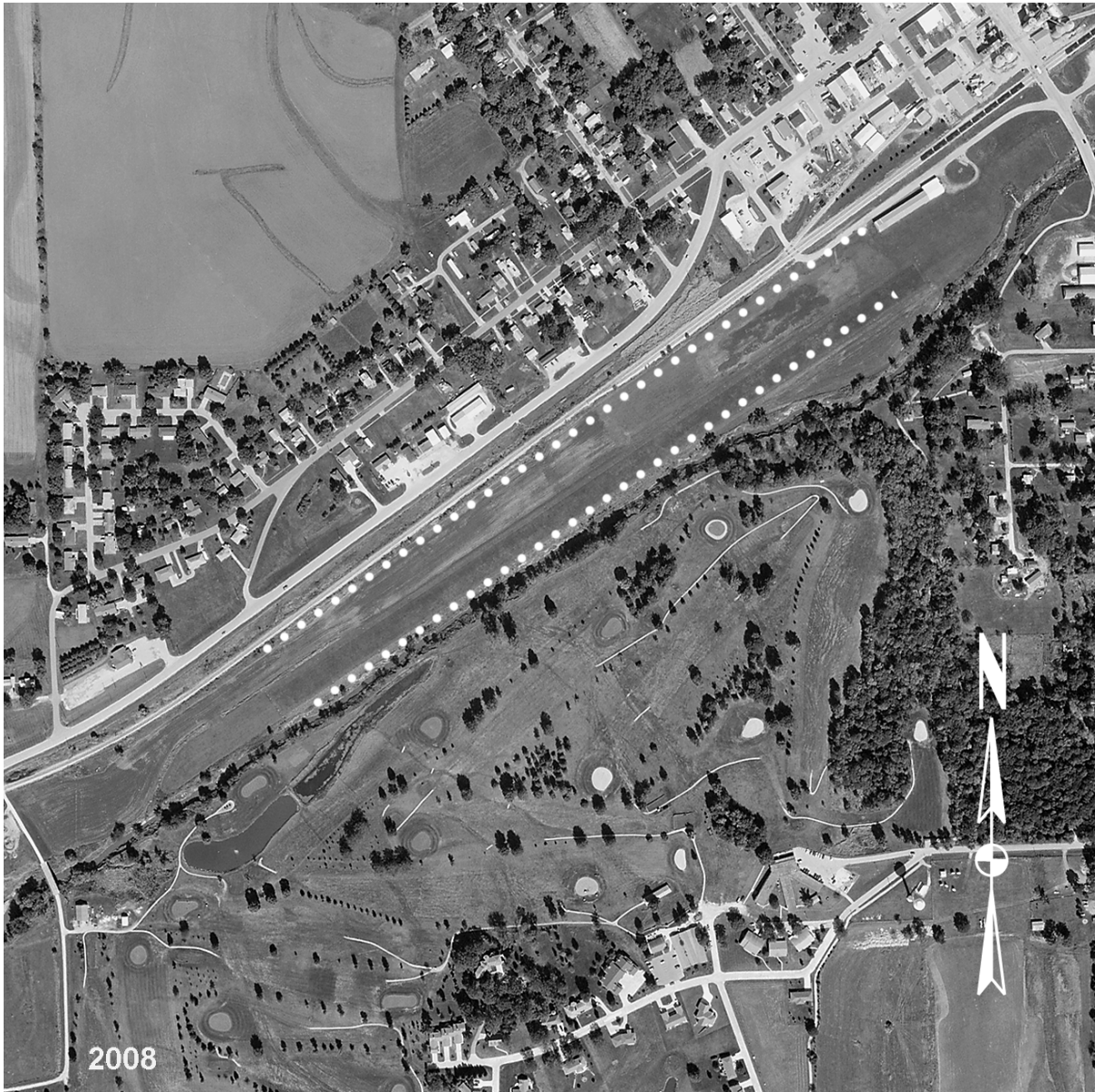
General Information		Based Aircraft				
Airport name: Anita Municipal Airport - Kevin Burke Memorial Field Associated city: Anita FAA identifier: Y43 Iowa Aviation System Plan Role: Local Service Manager: Arlyn Lund Phone: 712-762-4496 Latitude: 41° 26' 24" N Longitude: 94° 46' 10" W Elevation: 1,251 ft		Single engine: 1 Multi engine: 0 Jets: 0 Military: 0 Helicopters: 0 Ultralights: 2 TOTAL: 3				
Airside Facilities		Landside Facilities				
Type of taxiway system: No taxiways Taxiway lighting: none Rotating beacon: No Weather reporting equipment: none Lighted wind indicator: Yes Remote Communication Outlet (RCO): none		Apron aircraft tie-down locations: No apron Total hangar parking spaces: 0 Overnight storage for itinerant aircraft: No Type of terminal/admin building: No terminal Paved surfaces: none				
Runway Information						
Runway	Length	Width	ARC	PCI rating	Lighting System	
05/23	2,825 ft	95 ft	A-I	turf	LIRL	
Runway Approach Information						
Runway	Published approaches	Approach categories		Approach Slope	VGSI	REIL
05	None	Visual		20:1	none	No
23	None	Visual		20:1	none	No

Anita Municipal Airport - Kevin Burke Memorial Field

Fact Sheet

Planning		Fueling Capabilities	
Security plan: No		Fuel types: No fuel	
Emergency response plan: No		24 hour fueling available: No	
Last Airport Layout Plan update: No ALP			
Local height zoning: No			
Inclusion in local comprehensive plan: No			
Staffing			
Weekday hours of personnel: none			
Weekend hours of personnel: none			
Posted after hours contact information: Yes			
Services & Programs			
Aircraft maintenance & repair: none		Aircraft charter: none	
Flight instruction: none		Rental aircraft: none	
Snow removal: Plowing		Internet: No internet	
Food & beverage: No		Restrooms: none	
Pilot area: No			
Type of ground transportation: none			
Regular communication program: none			
Pilot safety program: none			
Employment From General Aviation Visitor Spending (Source: 2009 Uses and Benefits of Aviation in Iowa)			
Indirect Employment	Induced Employment	Total Employment	
0	0	0	
Total Airport-Related Employment			
Direct & Indirect Employment	Induced Employment	Total Employment	
0.5	0.5	1	
Economic Output			
Direct & Indirect Output	Induced Output	Total Output	
\$3,100	\$2,100	\$5,200	

Anita Municipal Airport - Kevin Burke Memorial Field



Source: Iowa Department of Transportation



IOWA
AVIATION SYSTEM PLAN
2010-2030



Office of Aviation
800 Lincoln Way
Ames, IA 50010
(515) 239-1691
lowadot.gov/aviation

Prepared by:

Mead&Hunt

**KIRKHAM
MICHAEL**

**The technical report and executive summary for the Iowa Aviation System Plan
is available on the Iowa DOT Office of Aviation website at:**

<http://www.iowadot.gov/aviation.index.html>