

# Iowa Acute Disease Monthly Update

Center for Acute Disease Epidemiology  
September  
2017



Iowa Department of Public Health

# TABLE OF CONTENTS

<b>Introduction</b> .....	<b>3</b>
<b>Iowa County Boundaries and Population</b> .....	<b>4</b>
<b>August Case Counts – Counties A-J</b> .....	<b>5</b>
<b>August Case Counts – Counties K-W</b> .....	<b>6</b>
<b>YTD Case Counts – Counties A-J</b> .....	<b>7</b>
<b>YTD Case Counts – Counties K-W</b> .....	<b>8</b>
<b>12 Month Case Counts – Counties A-J</b> .....	<b>9</b>
<b>12 Month Case Counts – Counties K-W</b> .....	<b>10</b>
<b>Campylobacteriosis Summary</b> .....	<b>11</b>
<b>Cryptosporidiosis Summary</b> .....	<b>12</b>
<b>E. coli (STEC) Summary</b> .....	<b>13</b>
<b>Mumps Summary</b> .....	<b>14</b>
<b>Pertussis Summary</b> .....	<b>15</b>
<b>Salmonellosis Summary</b> .....	<b>16</b>
<b>Shigellosis Summary</b> .....	<b>17</b>
<b>Center for Acute Disease Epidemiology (CADE) Staff</b> .....	<b>18</b>

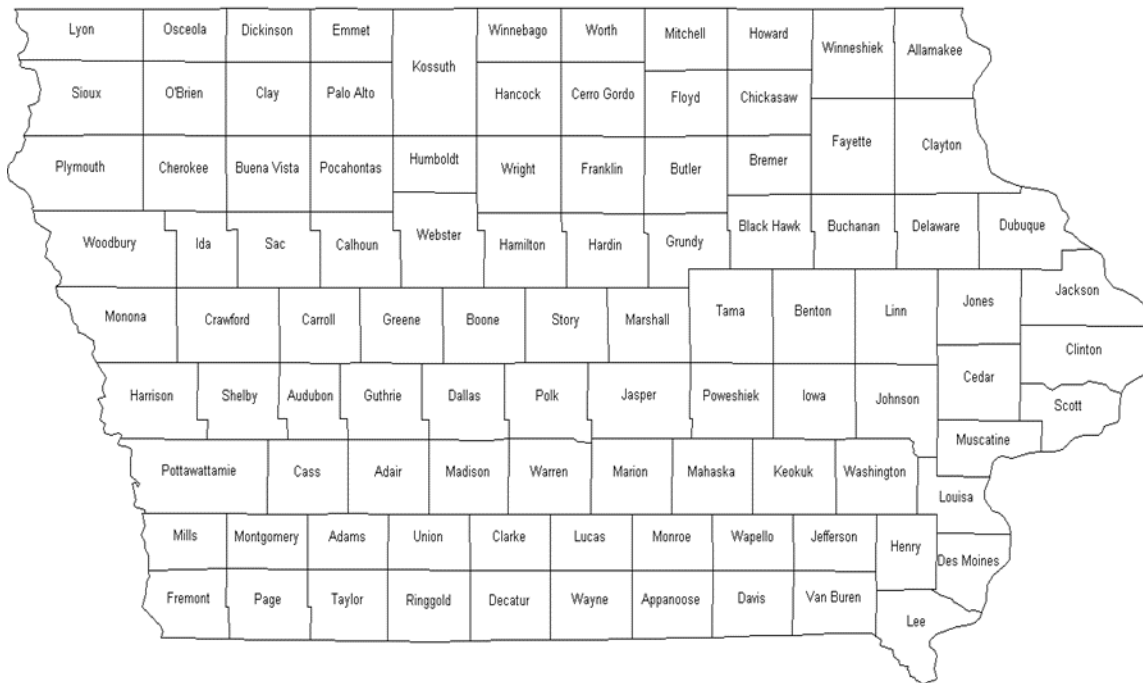
## INTRODUCTION

The Center for Acute Disease Epidemiology (CADE) uses the most recent Council of State and Territorial Epidemiologists (CSTE) / Centers for Disease Control and Prevention (CDC) case definitions found on the [National Notifiable Disease Surveillance System \(NNDSS\)](#) page. These definitions are used to classify the case as confirmed, probable, suspect, not a case, or awaiting more information. **Only confirmed and probable cases meeting the CSTE/CDC case definitions are included in official case counts.** CADE began using the suspect case definition as a final classification on Jan 1, 2017. Suspect cases are not included in the official case count but only meant to better estimate burden of disease. Any counts in this report from dates prior to Jan 1, 2017 do not include suspect cases.

Disease case counts were compiled from the Iowa Disease Surveillance System (IDSS). Data are provisional and subject to monthly reporting variation.

Rates were calculated using the 2010 census population for the State of Iowa.

# Iowa County Boundaries and Population



IOWA POPULATION					3,046,355
2010 CENSUS					
ADAIR	7,472	FLOYD	16,092	MONONA	9,121
ADAMS	3,894	FRANKLIN	10,548	MONROE	8,012
ALLAMAKEE	14,169	FREMONT	7,080	MONTGOMERY	10,424
APPANOOSE	12,692	GREENE	9,139	MUSCATINE	42,836
AUDUBON	5,873	GRUNDY	12,314	O'BRIEN	14,044
BENTON	25,699	GUTHRIE	10,687	OSCEOLA	6,211
BLACK HAWK	132,546	HAMILTON	15,312	PAGE	15,713
BOONE	26,364	HANCOCK	11,094	PALO ALTO	9,185
BREMER	24,624	HARDIN	17,441	PLYMOUTH	24,957
BUCHANAN	20,976	HARRISON	14,431	POCAHONTAS	7,154
BUENA VISTA	20,567	HENRY	20,222	POLK	451,677
BUTLER	15,021	HOWARD	9,526	POTTAWATTAMIE	92,728
CALHOUN	9,926	HUMBOLDT	9,688	POWESHIEK	18,601
CARROLL	20,589	IDA	7,141	RINGGOLD	5,072
CASS	13,598	IOWA	16,330	SAC	10,071
CEDAR	18,393	JACKSON	19,587	SCOTT	170,385
CERRO GORDO	43,575	JASPER	36,641	SHELBY	11,961
CHEROKEE	11,945	JEFFERSON	16,810	SIOUX	34,547
CHICKASAW	12,321	JOHNSON	139,155	STORY	92,406
CLARKE	9,325	JONES	20,611	TAMA	17,576
CLAY	16,491	KEOKUK	10,329	TAYLOR	6,161
CLAYTON	17,773	KOSSUTH	15,321	UNION	12,583
CLINTON	48,420	LEE	35,682	VAN BUREN	7,436
CRAWFORD	17,434	LINN	216,111	WAPELLO	35,391
DALLAS	74,641	LOUISA	11,282	WARREN	47,336
DAVIS	8,791	LUCAS	8,746	WASHINGTON	22,015
DECATUR	8,136	LYON	11,712	WAYNE	6,402
DELAWARE	17,534	MADISON	15,448	WEBSTER	37,044
DES MOINES	40,480	MAHASKA	22,417	WINNEBAGO	10,554
DICKINSON	16,955	MARION	33,252	WINNESHIEK	20,994
DUBUQUE	95,697	MARSHALL	40,994	WOODBURY	102,130
EMMET	9,996	MILLS	14,896	WORTH	7,541
FAYETTE	20,502	MITCHELL	10,709	WRIGHT	12,972

# Case Counts for August 2017 (Counties A-J)

Confirmed, Probable, and Suspect\* Cases

Note: Only counties with cases in August are displayed in the table.

	Campylobacteriosis	CRE <i>Enterobacter</i>	Cryptosporidiosis	Cyclosporiasis	<i>E. coli</i> (STEC)	Giardiasis	Hepatitis B chronic	<i>Haemophilus influenzae</i> type B	Legionellosis	Lyme	Malaria	Mumps	Pertussis	Rocky Mountain spotted fever	Salmonellosis	Shigellosis	West Nile virus	Total
Adair	2	-	-	-	-	-	-	-	-	-	-	-	-	-	-	-	-	2
Allamakee	1	-	2	-	1	-	-	-	-	-	-	-	-	-	-	-	-	4
Appanoose	1	-	-	-	-	-	-	-	-	-	-	-	-	-	-	-	-	1
Benton	1	-	-	-	-	-	-	-	1	-	-	-	-	-	-	-	-	2
Black Hawk	-	-	1	-	-	1	-	1	-	-	2	1	-	-	-	-	-	6
Boone	5	-	1	-	-	1	-	1	-	-	-	-	-	-	-	-	-	8
Bremer	-	-	-	-	-	-	1	-	1	-	1	-	-	-	-	-	-	3
Buchanan	1	-	2	-	-	-	-	-	-	-	-	-	-	-	2	-	-	5
Buena Vista	2	-	-	-	-	-	-	-	1	-	-	-	-	-	-	-	-	3
Calhoun	2	-	-	-	-	-	-	-	-	-	-	-	-	-	1	-	-	3
Carroll	1	-	-	-	1	-	-	-	-	-	-	-	-	-	-	-	-	2
Cass	1	-	-	-	-	-	-	-	-	-	-	-	-	-	1	-	-	2
Cedar	1	-	3	-	-	-	-	-	-	-	-	-	-	-	1	1	-	6
Cerro Gordo	4	-	3	-	2	-	-	-	-	-	-	-	-	-	-	-	-	9
Cherokee	-	-	-	-	1	-	-	-	-	-	-	-	-	-	-	-	-	1
Chickasaw	2	-	-	-	-	-	-	-	-	-	-	-	-	-	2	-	-	4
Clay	1	-	-	-	-	-	-	-	-	-	-	-	-	-	-	-	-	1
Clayton	1	-	2	-	1	-	-	-	1	-	-	-	-	-	1	-	-	6
Clinton	2	-	-	-	-	-	-	-	-	-	-	-	-	-	3	-	-	5
Crawford	-	-	-	-	-	-	-	-	-	-	-	-	-	-	1	-	-	1
Dallas	4	-	4	-	3	-	-	-	-	-	-	-	-	-	1	-	-	12
Delaware	2	-	-	-	-	-	-	-	-	-	-	-	-	-	1	-	-	3
Des Moines	1	-	-	-	1	-	-	-	-	-	-	-	-	-	-	1	-	3
Dickinson	-	-	-	-	-	-	-	-	-	-	-	-	-	-	1	-	-	1
Dubuque	4	1	8	1	1	2	-	-	1	-	-	-	-	1	2	-	-	21
Fayette	1	-	-	-	-	1	-	-	-	-	-	-	-	-	-	-	-	2
Floyd	1	-	-	-	-	-	-	-	-	-	-	-	-	-	1	-	-	2
Franklin	-	-	-	-	-	-	-	-	-	-	1	-	-	-	-	-	-	1
Greene	1	-	-	-	-	-	-	-	-	-	-	-	-	-	-	-	-	1
Guthrie	-	-	1	-	1	-	-	-	-	-	-	-	-	-	1	-	-	3
Hamilton	-	-	-	-	1	-	-	-	-	-	-	-	-	-	-	-	-	1
Hardin	3	-	-	-	-	-	-	-	-	-	-	-	-	-	-	-	-	3
Henry	-	-	-	-	-	1	-	-	-	-	-	-	-	-	-	-	-	1
Howard	-	-	1	-	-	-	-	-	-	-	-	-	-	-	-	-	-	1
Humboldt	1	-	-	-	-	-	-	-	-	-	-	-	-	-	1	-	-	2
Ida	1	-	-	-	-	-	-	-	-	-	-	-	-	-	-	-	-	1
Iowa	1	-	1	-	-	-	-	-	-	-	-	-	-	-	-	-	-	2
Jackson	-	-	-	-	1	-	-	-	-	-	-	-	-	-	-	-	-	1
Jasper	2	-	-	-	2	-	-	-	-	-	-	-	-	-	-	-	-	4
Jefferson	-	-	-	-	-	-	-	-	-	-	-	-	-	-	1	-	-	1
Johnson	2	-	1	-	3	1	-	-	1	-	-	-	-	-	9	-	-	17
Jones	1	-	1	-	-	-	-	-	-	-	-	-	-	-	-	-	-	2

\*CADE began using the suspect case definition as a final classification on Jan 1, 2017. Suspect cases are not included in the official case count but only meant to better estimate burden of disease. Any counts in this report from dates prior to Jan 1, 2017 do not include suspect cases.

# Case Counts for August 2017 (Counties K-W)

Confirmed, Probable, and Suspect\* Cases

Note: Only counties with cases in August are displayed in the table.

	Campylobacteriosis	CRE <i>Enterobacter</i>	Cryptosporidiosis	Cyclosporiasis	<i>E. coli</i> (STEC)	Giardiasis	Hepatitis B chronic	<i>Haemophilus influenzae</i> type B	Legionellosis	Lyme	Malaria	Mumps	Pertussis	Rocky Mountain spotted fever	Salmonellosis	Shigellosis	West Nile virus	Total
Keokuk	1	-	1	-	-	-	-	-	-	-	-	-	-	-	-	-	-	2
Kossuth	1	-	-	-	2	-	-	-	-	-	-	-	-	-	-	-	-	3
Linn	9	-	13	-	2	-	1	-	-	1	-	-	1	-	14	2	-	43
Louisa	1	-	-	-	-	-	-	-	-	-	-	-	-	-	-	-	-	1
Lucas	2	-	-	-	-	-	-	-	-	-	-	-	-	-	-	-	-	2
Lyon	2	-	-	-	-	-	-	-	-	-	-	-	-	-	1	-	-	3
Madison	1	-	2	-	-	-	-	-	-	-	-	-	-	-	-	-	-	3
Mahaska	1	-	-	-	2	-	-	-	-	-	-	-	-	-	-	-	-	3
Marion	2	-	1	-	-	-	-	-	-	-	-	-	-	-	-	-	-	3
Marshall	1	-	-	-	-	-	-	-	1	1	-	-	-	-	-	-	-	3
Mitchell	2	-	-	-	1	-	-	-	-	-	-	-	-	-	1	-	-	4
Monroe	-	-	-	-	-	-	-	-	-	-	-	-	-	-	1	-	-	1
Muscatine	2	-	-	-	5	1	-	-	-	-	-	-	-	-	1	4	-	13
O'Brien	1	-	1	-	-	-	-	-	-	-	-	-	-	-	-	-	-	2
Osceola	-	-	-	-	-	-	-	-	-	-	-	-	-	-	1	-	-	1
Palo Alto	1	-	-	-	-	-	-	-	-	-	-	-	-	-	-	-	-	1
Plymouth	-	-	1	-	3	-	-	-	-	-	-	-	-	-	-	-	-	4
Pocahontas	2	-	2	-	1	-	-	-	-	-	-	-	-	-	-	-	-	5
Polk	15	-	10	-	-	3	4	-	-	3	-	-	5	-	3	4	-	47
Pottawattamie	3	-	-	-	-	2	-	-	-	-	-	-	-	-	1	1	-	7
Poweshiek	1	-	-	-	-	-	-	-	-	-	-	-	-	-	-	-	-	1
Ringgold	1	-	-	-	-	-	-	-	-	-	-	-	-	-	-	-	-	1
Sac	3	-	-	-	-	-	-	-	-	-	-	-	-	-	-	-	-	3
Scott	3	-	2	-	2	-	1	-	-	-	-	-	3	-	2	2	-	15
Shelby	-	-	4	-	-	-	-	-	-	-	-	-	-	-	-	-	-	4
Sioux	-	-	4	-	-	-	-	-	-	-	-	-	-	-	2	-	-	6
Story	3	-	6	1	-	1	-	-	-	-	-	-	-	-	1	2	-	14
Tama	1	-	-	-	-	-	-	-	-	1	-	-	-	-	4	-	-	6
Union	4	-	-	-	1	-	-	-	-	-	-	-	-	-	-	-	-	5
Van Buren	2	-	-	-	-	-	-	-	-	-	-	-	-	-	-	-	-	2
Wapello	3	-	-	-	1	-	-	-	-	-	1	-	-	-	1	-	-	6
Warren	1	-	4	-	1	1	-	-	-	-	-	-	-	-	1	-	-	8
Washington	1	-	-	-	-	-	-	-	-	-	-	-	1	-	-	-	-	2
Webster	1	-	-	-	-	-	-	-	-	-	-	-	-	-	-	-	-	1
Winnebuck	2	-	-	-	-	-	-	-	-	-	-	-	-	-	3	-	-	5
Woodbury	2	-	5	-	-	-	1	-	-	-	-	-	-	-	4	-	1	13
Worth	-	-	2	-	-	-	-	-	-	-	-	-	-	-	-	-	-	2
<b>Total</b>	<b>128</b>	<b>1</b>	<b>89</b>	<b>2</b>	<b>40</b>	<b>15</b>	<b>8</b>	<b>1</b>	<b>2</b>	<b>12</b>	<b>1</b>	<b>4</b>	<b>11</b>	<b>1</b>	<b>71</b>	<b>17</b>	<b>1</b>	<b>404</b>

\*CADE began using the suspect case definition as a final classification on Jan 1, 2017. Suspect cases are not included in the official case count but only meant to better estimate burden of disease. Any counts in this report from dates prior to Jan 1, 2017 do not include suspect cases.

# YTD Case Counts 2017 (Counties A-J)

Confirmed, Probable, and Suspect\* Cases

	Anaplasmosis	Babesiosis	Campylobacteriosis	CRE <i>Citrobacter</i>	CRE <i>Enterobacter</i>	CRE <i>Escherichia coli</i>	CRE <i>Klebsiella</i>	Cryptosporidiosis	Cyclosporiasis	<i>E. coli</i> (STEC)	Ehrlichiosis/Anaplasmosis undetermined	Ehrlichiosis	Giardiasis	Hansen's disease	Hepatitis A	Hepatitis B Acute	Hepatitis B Chronic	Hepatitis D	<i>Haemophilus influenzae</i> type B	HUS	Larrosse encephalitis	Legionellosis	Listeriosis	Lyme	Malaria	Mumps	Pertussis	Q Fever Acute	Q Fever Chronic	Rocky Mountain spotted fever	Salmonellosis	Shigellosis	Tularemia	West Nile virus	Total	
Adair	-	-	2	-	-	-	-	1	-	-	-	-	-	-	-	-	-	-	-	-	-	-	-	-	-	-	-	-	-	1	1	-	-	5		
Adams	-	-	-	-	-	-	-	1	-	-	-	-	-	-	-	-	-	-	-	-	-	-	-	-	-	-	-	-	-	-	-	-	-	-	1	
Allamakee	1	-	8	-	-	-	-	4	-	1	-	-	3	-	-	-	-	-	-	-	-	-	-	2	-	-	-	-	-	-	4	-	-	1	24	
Appanoose	-	-	5	-	1	-	-	2	-	-	-	-	-	-	-	-	1	-	-	-	-	-	-	-	-	-	4	-	-	-	-	-	-	-	14	
Audubon	-	-	4	-	-	-	-	2	-	1	-	-	-	-	-	-	-	-	-	-	-	-	-	-	-	-	-	-	-	-	1	-	-	-	8	
Benton	-	-	12	-	1	-	-	3	-	4	-	1	-	-	-	-	-	-	-	-	-	-	-	5	-	-	-	-	-	-	2	1	-	-	29	
Black Hawk	-	-	2	-	-	-	-	2	-	2	-	-	6	-	-	-	9	1	-	-	-	-	3	-	7	-	13	2	-	-	23	-	-	-	70	
Boone	-	-	9	-	1	1	-	3	1	1	-	-	4	-	-	-	-	1	-	-	-	-	-	2	-	-	2	-	-	-	2	-	-	-	27	
Bremer	-	-	2	-	-	-	-	-	-	1	-	-	2	-	-	-	1	-	-	-	-	-	-	-	1	-	3	-	-	-	1	-	-	-	11	
Buchanan	-	-	5	-	-	-	-	5	-	1	-	-	4	-	-	-	-	-	-	-	-	-	-	-	-	-	-	-	-	-	10	-	-	-	25	
Buena Vista	-	-	13	1	-	-	-	4	-	-	-	-	-	-	-	-	1	-	-	-	-	-	-	-	1	-	-	-	-	-	3	1	-	-	24	
Butler	-	-	1	-	-	-	-	1	-	-	-	-	-	-	-	-	-	-	-	-	-	1	-	-	-	1	-	-	1	-	-	-	-	-	5	
Calhoun	-	-	10	-	-	-	-	-	1	-	-	-	-	-	-	-	-	-	-	-	-	-	-	-	-	-	-	-	-	-	4	-	-	-	15	
Carroll	-	-	8	-	-	-	-	2	-	3	-	-	2	-	-	-	-	-	-	-	-	-	-	-	-	-	2	-	-	-	6	-	-	-	23	
Cass	-	-	2	-	-	-	-	-	-	2	-	-	-	-	-	-	-	-	-	-	-	-	-	-	-	-	2	-	-	-	2	-	-	-	8	
Cedar	-	-	4	-	-	-	-	7	-	3	-	-	-	-	-	-	-	-	-	-	-	-	-	4	-	-	1	-	-	-	6	1	-	-	26	
Cerro Gordo	1	-	13	1	1	-	-	3	-	3	-	-	-	-	-	-	2	-	-	-	-	1	-	2	-	-	1	-	-	-	7	-	-	-	35	
Cherokee	-	-	2	-	-	-	-	1	-	3	-	-	-	-	-	-	1	-	-	-	-	-	-	1	-	-	-	-	-	-	7	-	-	-	15	
Chickasaw	-	1	6	-	-	-	-	1	-	2	-	-	-	-	-	-	-	-	-	-	-	-	-	1	-	-	-	-	-	-	3	-	-	-	14	
Clarke	-	-	2	-	-	-	-	-	-	2	-	-	1	-	-	-	-	-	-	-	-	-	-	-	-	-	-	1	-	-	1	-	-	-	7	
Clay	-	-	2	-	1	-	-	2	-	2	-	-	-	-	-	-	-	-	-	-	-	-	-	-	-	-	-	-	-	-	-	-	-	-	7	
Clayton	-	-	7	-	2	-	-	5	1	4	-	-	-	-	-	-	1	-	-	-	-	-	1	-	13	-	5	-	1	-	-	5	-	-	-	45
Clinton	-	-	17	-	-	-	1	1	-	3	-	-	1	-	-	-	1	-	-	-	-	-	1	-	-	-	-	-	-	-	14	-	-	-	39	
Crawford	-	-	2	-	-	-	-	1	-	2	-	-	-	-	-	-	-	-	-	-	-	-	-	-	-	-	2	-	-	-	1	-	-	-	8	
Dallas	-	-	10	2	3	-	1	5	-	8	-	-	4	-	-	-	1	-	-	-	-	-	-	3	-	-	1	-	-	2	16	2	-	-	58	
Davis	-	-	-	-	-	-	-	-	-	-	-	-	-	-	-	-	-	-	-	-	-	-	-	-	-	-	1	-	-	-	3	-	-	-	4	
Decatur	-	-	1	-	-	-	-	1	-	-	-	-	-	-	-	-	-	-	-	-	-	-	-	-	-	-	-	-	-	-	-	-	-	-	2	
Delaware	-	-	11	-	-	1	-	4	-	2	-	-	1	-	-	-	-	-	-	-	-	-	-	3	-	5	-	-	-	-	7	-	-	-	34	
Des Moines	-	-	9	-	-	-	-	6	-	7	-	1	-	-	-	-	1	-	-	-	-	-	-	1	-	-	-	-	-	-	10	1	-	-	36	
Dickinson	-	-	3	-	-	-	-	6	-	-	-	-	1	-	-	-	-	-	-	-	-	-	-	-	-	-	-	1	-	-	3	-	-	-	14	
Dubuque	-	-	31	-	4	1	2	20	1	18	1	1	6	-	-	-	2	-	-	-	-	-	-	27	-	15	2	1	-	1	15	2	-	-	150	
Emmet	-	-	-	-	1	-	-	-	-	1	-	-	1	-	-	-	-	-	-	-	-	1	-	1	-	-	-	-	-	1	-	-	-	-	6	
Fayette	-	-	2	-	-	3	-	1	-	-	-	-	3	-	-	-	2	-	-	-	-	-	-	1	-	-	-	-	-	-	1	-	-	-	13	
Floyd	-	-	13	-	-	-	-	-	-	-	-	-	1	-	-	-	1	-	-	-	-	-	-	-	-	1	-	-	-	-	2	-	-	-	18	
Franklin	-	-	2	-	-	-	-	-	-	-	-	-	1	-	-	-	-	-	-	-	-	-	-	-	-	1	-	-	-	-	-	-	-	-	4	
Greene	-	-	7	-	-	-	-	2	-	1	-	-	1	-	-	-	-	-	-	-	-	-	-	-	-	-	-	-	-	-	2	-	-	-	14	
Grundy	-	-	-	-	-	-	-	-	-	-	-	-	-	-	-	-	-	-	-	-	-	-	-	2	-	1	-	-	-	-	1	-	-	-	4	
Guthrie	-	-	5	-	1	-	-	1	-	4	-	-	-	-	-	-	-	-	-	-	-	-	-	-	-	1	-	-	-	-	2	-	-	-	14	
Hamilton	-	-	1	-	-	-	-	1	-	3	-	-	1	-	-	-	1	-	-	-	-	-	-	-	-	1	-	1	-	-	4	-	-	-	13	
Hancock	-	-	3	-	-	-	1	-	-	1	-	-	-	-	-	-	-	-	-	-	-	-	-	-	-	-	-	-	-	-	-	-	-	-	5	
Hardin	-	-	15	-	-	-	-	-	-	1	-	-	-	-	-	-	-	-	-	-	-	-	-	-	-	-	-	-	-	-	1	-	-	-	17	
Harrison	-	-	3	-	-	-	-	-	-	4	-	-	1	-	-	-	1	-	-	-	-	-	-	-	-	-	2	-	-	-	-	-	-	-	11	
Henry	-	-	3	-	-	-	-	-	-	1	-	-	1	-	-	-	-	-	-	-	-	-	-	-	-	-	-	1	-	-	4	-	-	-	10	
Howard	-	-	5	-	-	-	-	4	-	-	-	-	-	-	-	-	-	-	-	-	-	-	-	1	-	-	-	-	-	-	1	-	-	-	11	
Humboldt	-	-	2	-	-	-	-	-	-	-	-	-	-	-	-	-	-	-	-	-	-	-	-	-	-	-	-	-	-	-	2	-	-	-	4	
Ida	-	-	1	-	-	-	-	-	-	-	-	-	-	-	-	-	-	-	-	-	-	-	-	-	-	-	-	-	-	-	-	-	-	1	2	
Iowa	-	-	7	-	-	-	-	1	-	3	-	-	-	-	-	-	-	-	-	-	-	-	-	-	-	-	-	-	-	-	2	-	-	-	13	
Jackson	-	-	9	-	1	-	-	6	-	7	-	-	1	-	-	-	-	-	-	-	-	-	-	4	-	-	1	-	-	-	7	-	-	-	36	
Jasper	-	-	11	-	1	-	-	-	-	3	-	-	1	-	1	-	1	-	-	-	-	1	-	2	1	-	-	-	-	-	7	1	-	-	30	
Jefferson	-	-	-	-	-	-	-	4	-	-	-	-	-	-	-	-	1	-	-	-	-	-	-	-	-	-	-	-	-	-	1	-	-	-	7	
Johnson	-	-	30	1	-	1	-	7	3	14	-	-	11	-	-	-	10	-	-	-	-	-	1	-	37	3	6	18	-	-	28	1	-	-	171	
Jones	-	-	9	-	1	-	-	4	-	6	-	-	-	-	-	-	-	-	-	-	-	1	-	2	-	1	-	-	-	2	-	-	-	-	26	

\*CADE began using the suspect case definition as a final classification on Jan 1, 2017. Suspect cases are not included in the official case count but only meant to better estimate burden of disease. Any counts in this report from dates prior to Jan 1, 2017 do not include suspect cases.

# YTD Case Counts 2017 (Counties K-W)

Confirmed, Probable, and Suspect\* Cases

	Anaplasmosis	Babesiosis	Campylobacteriosis	CRE <i>Citrobacter</i>	CRE <i>Enterobacter</i>	CRE <i>Escherichia coli</i>	CRE <i>Klebsiella</i>	Cryptosporidiosis	Cyclosporiasis	<i>E. coli</i> (STEC)	Ehrlichiosis/Anaplasmosis undetermined	Ehrlichiosis	Giardiasis	Hansen's disease	Hepatitis A	Hepatitis B Acute	Hepatitis B Chronic	Hepatitis D	<i>Haemophilus influenzae</i> type B	HUS	Lacrosse encephalitis	Legionellosis	Listeriosis	Lyme	Malaria	Mumps	Pertussis	Q Fever Acute	Q Fever Chronic	Rocky Mountain spotted fever	Salmonellosis	Shigellosis	Tularemia	West Nile virus	Total	
Keokuk	-	-	5	-	1	1	-	2	-	1	-	-	-	-	-	-	-	-	-	-	-	-	-	1	-	-	1	-	-	1	2	-	-	-	15	
Kossuth	-	-	2	-	1	-	-	1	-	4	-	-	1	-	-	-	-	-	-	-	-	-	-	-	-	-	-	-	-	-	2	-	-	-	11	
Lee	-	-	1	-	-	2	4	3	-	-	-	1	1	-	-	-	-	-	-	-	-	-	-	-	-	-	-	-	-	-	1	3	-	-	16	
Linn	1	-	46	1	2	-	-	32	1	15	-	-	8	-	-	-	14	-	-	-	-	-	-	31	1	11	4	-	-	-	40	4	-	-	211	
Louisa	-	-	2	-	-	-	-	-	-	1	-	-	1	-	-	-	1	-	-	-	-	-	-	-	-	-	-	-	-	-	1	-	-	-	6	
Lucas	-	-	5	-	-	-	-	-	-	4	-	1	-	-	-	-	-	-	-	-	1	-	-	-	-	-	-	-	-	-	-	-	-	-	11	
Lyon	-	-	5	-	-	-	-	4	-	6	-	-	-	-	-	-	-	-	-	1	-	-	-	-	-	-	-	-	-	-	4	-	-	-	20	
Madison	-	-	7	-	-	-	-	2	-	2	-	1	-	-	-	-	-	-	-	-	-	-	-	-	-	1	-	-	-	-	-	-	-	-	13	
Mahaska	-	-	7	-	-	-	-	1	2	2	-	1	-	-	-	-	-	-	-	-	-	1	-	-	-	-	-	-	-	-	4	-	-	-	18	
Marion	-	-	6	-	-	-	-	7	-	-	-	-	-	-	-	-	1	-	-	-	-	-	-	-	-	-	3	-	-	-	6	-	-	-	23	
Marshall	-	-	4	-	-	1	2	-	1	1	1	-	1	-	-	-	1	-	-	-	-	1	1	2	-	1	-	-	-	-	5	1	-	-	23	
Mills	-	-	2	-	-	1	-	2	-	2	-	-	-	-	-	-	-	-	-	-	-	-	-	-	-	-	-	-	-	-	4	3	-	-	14	
Mitchell	-	-	8	-	1	-	-	7	-	10	-	-	2	-	-	-	-	-	-	-	-	-	-	-	-	-	-	-	-	-	1	-	-	-	29	
Monona	-	-	1	-	-	-	-	-	-	-	-	-	-	-	-	-	-	-	-	-	-	-	-	-	-	-	-	-	-	-	2	-	-	-	3	
Monroe	-	-	2	-	1	-	-	3	-	-	-	-	-	-	-	-	-	-	-	-	-	-	-	-	-	-	-	-	-	-	2	-	-	-	8	
Montgomery	-	-	-	1	-	2	-	-	-	-	-	-	-	-	-	-	1	-	-	-	-	-	-	-	-	-	-	-	-	-	-	-	-	-	4	
Muscatine	-	-	12	-	-	-	-	2	1	8	-	-	3	-	1	-	2	-	-	-	-	1	-	1	-	-	1	-	-	-	5	14	-	-	51	
O'Brien	-	-	3	-	1	-	-	1	-	2	-	1	-	-	-	-	-	-	-	-	-	-	-	-	-	-	-	-	-	-	5	-	-	-	13	
Osceola	-	-	2	-	-	-	-	-	-	-	-	-	-	-	-	-	-	-	-	-	-	-	-	-	-	-	-	-	-	-	1	-	-	1	4	
Page	-	-	2	-	-	-	-	-	-	2	-	-	-	-	-	-	-	-	-	-	-	-	-	-	-	-	-	-	-	-	4	-	-	-	8	
Palo Alto	-	-	2	-	-	-	-	-	-	1	-	-	-	-	-	-	1	-	-	-	-	-	-	-	-	-	-	-	-	-	-	-	-	-	4	
Plymouth	-	-	4	-	-	-	-	2	-	5	-	-	1	-	-	-	1	-	-	-	-	-	-	-	-	1	-	-	-	-	-	-	-	-	14	
Pocahontas	-	-	6	-	-	-	-	2	-	6	-	-	-	-	-	-	-	-	-	-	-	-	-	-	-	-	-	-	-	-	1	-	-	-	15	
Polk	-	-	88	1	3	1	1	28	5	27	-	-	31	-	1	4	48	2	-	-	-	1	-	15	3	6	25	1	-	1	70	13	1	-	376	
Pottawattamie	-	-	18	-	1	1	-	2	1	6	-	1	8	-	-	-	7	-	-	-	-	2	-	3	-	-	2	-	-	-	12	9	-	-	73	
Poweshiek	-	-	4	-	-	-	-	-	-	-	-	-	-	-	-	-	-	-	-	-	-	1	-	-	-	-	-	1	-	-	-	-	-	-	6	
Ringgold	-	-	1	-	-	-	-	1	-	-	-	-	-	-	-	-	-	-	-	-	-	-	-	-	-	-	-	-	-	-	-	-	-	-	2	
Sac	-	-	9	-	-	-	-	3	-	3	-	-	1	-	-	-	-	-	-	-	-	-	-	-	-	-	-	1	-	-	2	-	-	-	19	
Scott	-	-	19	-	2	1	1	8	1	9	-	-	6	-	1	2	11	-	1	-	-	2	-	11	1	2	23	-	-	-	19	17	-	-	137	
Shelby	-	-	8	-	-	-	-	7	-	1	-	-	-	-	-	1	1	-	-	-	-	-	-	-	-	-	-	-	-	-	5	-	-	-	23	
Sioux	-	-	19	-	-	-	-	25	2	5	-	-	7	-	-	-	-	-	-	-	-	-	-	1	-	-	-	1	-	-	11	1	-	-	72	
Story	1	1	25	2	-	-	-	15	2	2	-	2	8	-	-	-	5	-	-	-	-	-	-	3	2	14	-	-	-	-	13	5	-	1	101	
Tama	-	-	2	-	1	-	-	1	-	2	-	-	-	-	-	-	-	-	-	-	-	-	-	2	-	1	-	-	-	-	7	-	-	-	16	
Taylor	-	-	-	-	-	-	-	1	-	1	-	-	-	-	-	-	-	-	-	-	-	-	-	-	-	-	-	-	-	-	-	-	-	-	2	
Union	-	-	5	-	-	-	-	5	-	3	-	-	-	-	-	-	-	-	-	-	-	1	-	-	-	-	-	-	-	-	1	-	-	-	15	
Van Buren	-	-	5	-	-	1	-	1	-	-	-	-	-	-	-	-	-	-	-	-	-	-	-	-	-	-	1	-	-	-	-	-	-	-	8	
Wapello	-	-	15	-	-	-	-	3	-	1	-	-	-	-	-	-	3	-	-	-	-	-	-	1	1	-	4	1	-	-	1	-	-	-	30	
Warren	-	1	8	-	-	-	-	7	-	3	-	-	8	-	-	-	-	-	-	-	-	-	-	-	-	3	-	-	-	-	10	-	1	-	41	
Washington	-	-	4	-	-	-	-	-	-	2	-	-	-	-	-	-	-	-	-	-	-	-	-	-	-	-	3	-	-	-	3	-	-	-	12	
Wayne	-	-	1	-	-	-	-	-	-	-	-	-	-	-	-	-	-	1	-	-	-	-	-	-	-	-	-	-	-	-	-	-	-	-	2	
Webster	-	-	6	-	-	-	-	5	-	4	-	1	-	-	-	-	-	-	-	-	-	-	-	2	-	-	1	-	-	-	4	-	-	-	23	
Winnebago	1	-	2	-	-	-	-	1	-	-	-	-	-	-	-	-	-	-	-	-	-	-	-	1	-	-	-	-	-	-	2	-	-	-	7	
Winneshieck	1	-	11	-	-	-	-	11	1	1	-	-	-	-	-	-	-	-	-	-	-	-	-	2	-	11	-	-	-	-	5	1	-	-	44	
Woodbury	1	-	13	1	4	-	1	12	-	2	-	-	2	1	-	1	8	-	-	-	-	-	-	1	-	-	4	-	-	1	16	3	-	1	72	
Worth	-	-	4	-	-	-	-	4	-	2	-	-	-	-	-	-	-	-	-	-	-	-	-	-	-	-	-	-	-	-	-	-	-	-	10	
Wright	-	-	4	-	-	-	-	-	-	1	-	-	-	-	-	-	-	-	-	-	-	-	-	-	-	-	-	-	-	-	-	3	-	-	-	8
Total	7	3	736	11	37	18	14	335	24	271	2	8	151	1	4	8	143	4	2	2	1	21	1	201	13	108	108	12	1	7	499	85	2	5	2845	

\*CADE began using the suspect case definition as a final classification on Jan 1, 2017. Suspect cases are not included in the official case count but only meant to better estimate burden of disease. Any counts in this report from dates prior to Jan 1, 2017 do not include suspect cases.



# Case Counts for September 1, 2016 – August 31, 2017

## (Counties A-J)

### Confirmed and Probable Cases

	Anaplasmosis	Babesiosis	Campylobacteriosis	Chikungunya	CRE Citrobacter	CRE Enterobacter	CRE Escherichia coli	CRE Klebsiella	Cryptosporidiosis	Cyclosporiasis	Dengue fever	E. coli (STEC)	Ehrlichioses/Anaplasmosis undetermined	Ehrlichiosis	Giardiasis	Hansen's disease	Hepatitis A	Hepatitis B acute	Hepatitis B chronic	Hepatitis D	Haemophilus influenzae type B	HUS	Lacrosse encephalitis	Legionellosis	Listeria	Lyme	Malaria	Mumps	Non-Hantavirus pulmonary syndrome	Pertussis	Q Fever Acute	Q Fever Chronic	Rocky Mountain spotted fever	Salmonellosis	Shigellosis	Tetanus	Tularemia	West Nile virus	Total
Adair	-	-	2	-	-	-	-	-	1	-	-	-	-	-	-	-	-	-	-	-	-	-	-	-	-	-	-	-	-	-	-	-	1	1	-	-	-	5	
Adams	-	-	-	-	-	-	-	-	1	-	-	-	-	-	-	-	-	-	-	-	-	-	-	-	-	-	-	-	-	-	-	-	-	-	-	-	-	-	1
Allamakee	1	-	9	-	-	-	-	4	-	-	2	-	-	3	-	-	-	2	-	-	-	-	-	-	2	-	-	-	-	-	-	-	-	7	1	-	-	1	32
Appanoose	-	-	6	-	-	1	-	2	-	-	-	-	-	1	-	-	-	-	-	-	-	-	-	-	-	-	-	-	4	-	-	-	3	-	-	-	1	19	
Audubon	-	-	5	-	-	-	-	2	-	-	1	-	-	-	-	-	-	-	-	-	-	-	-	-	-	-	-	-	-	-	-	-	2	-	-	-	10		
Benton	-	-	16	-	-	1	-	3	-	-	3	-	1	-	-	-	-	-	-	-	-	-	-	-	-	6	-	-	-	-	-	-	3	1	-	-	-	34	
Black Hawk	-	-	10	-	-	-	-	6	-	-	4	-	8	-	-	-	-	12	1	-	1	-	3	-	8	1	19	-	2	-	-	-	37	2	-	-	-	114	
Boone	-	-	13	-	-	1	-	5	1	-	1	-	5	-	-	-	-	-	-	-	1	-	-	-	2	-	1	-	3	-	-	-	4	-	-	-	1	38	
Bremer	-	-	5	-	-	-	-	1	-	-	3	-	2	-	-	-	-	1	-	-	-	-	-	-	1	-	3	-	-	-	-	-	2	-	-	-	18		
Buchanan	-	-	10	-	-	-	-	4	-	-	4	-	4	-	-	-	-	-	-	-	-	-	-	-	-	1	-	-	-	-	-	-	-	16	-	-	-	39	
Buena Vista	-	-	16	-	-	-	-	4	-	-	-	-	-	-	-	-	-	1	-	-	-	-	-	-	1	-	-	-	-	-	-	-	6	1	-	-	-	29	
Butler	-	-	2	-	-	-	-	1	-	-	-	-	-	-	-	-	-	1	-	-	-	-	-	-	-	-	-	1	-	-	-	1	-	1	-	-	-	8	
Calhoun	-	-	11	-	-	-	-	-	1	-	1	-	1	-	-	-	-	-	-	-	-	-	-	-	-	-	-	-	-	-	-	-	4	-	-	-	18		
Carroll	-	1	11	-	-	-	-	3	-	1	5	-	5	-	-	-	-	-	-	-	-	-	-	-	-	-	1	-	4	-	-	-	12	-	-	-	43		
Cass	-	-	4	-	-	-	-	1	-	-	2	-	-	-	-	-	-	-	-	-	-	-	-	-	-	-	-	-	9	-	-	-	3	-	-	-	19		
Cedar	-	-	7	-	-	-	-	8	-	-	3	-	-	-	-	-	-	-	-	-	-	-	-	-	-	4	-	-	2	-	-	-	6	2	-	-	-	32	
Cerro Gordo	1	-	21	-	-	-	-	40	-	-	3	-	1	-	-	-	-	2	-	-	-	-	1	2	-	2	-	-	1	-	-	-	7	-	-	-	79		
Cherokee	-	-	2	-	-	-	-	1	-	-	3	-	-	-	-	-	-	1	-	-	-	-	-	-	-	1	-	-	-	-	-	-	7	-	-	-	-	15	
Chickasaw	-	-	6	-	-	-	-	1	-	-	2	-	-	-	-	-	-	-	-	-	-	-	-	-	1	-	-	-	-	-	-	-	5	-	-	-	-	15	
Clarke	-	-	3	-	-	-	-	5	-	-	-	-	1	-	-	-	-	-	-	-	-	-	-	-	-	-	-	-	1	-	-	1	2	-	-	-	13		
Clay	-	-	2	-	-	-	-	2	-	-	3	-	-	-	-	-	-	-	-	-	-	-	-	-	-	-	-	-	-	-	-	-	1	-	-	-	8		
Clayton	1	-	12	-	-	-	-	7	1	-	4	-	1	-	-	-	-	1	-	-	-	-	1	14	-	5	-	1	-	-	-	5	-	-	-	-	53		
Clinton	-	-	20	-	-	-	1	1	-	-	2	-	1	-	-	-	-	1	-	-	-	-	1	1	-	1	-	-	1	-	-	-	17	-	-	-	2	48	
Crawford	-	-	6	-	-	-	-	1	-	-	4	-	-	-	-	-	-	1	-	-	-	-	-	-	-	-	-	1	-	-	-	-	2	2	-	-	-	17	
Dallas	-	-	18	-	1	2	-	13	-	-	3	-	5	-	-	-	-	2	-	-	1	-	-	3	-	-	-	7	-	-	2	18	3	-	-	-	79		
Davis	-	-	2	-	-	-	-	1	-	-	1	-	-	-	-	-	-	-	-	-	-	-	1	-	-	-	-	-	-	-	-	-	4	-	-	-	-	9	
Decatur	-	-	1	-	-	-	-	1	-	-	-	-	-	-	-	-	-	-	-	-	1	-	-	-	-	-	-	-	-	-	-	-	-	-	-	-	-	3	
Delaware	-	-	16	-	-	1	-	4	-	-	3	-	1	-	-	-	-	-	-	-	-	-	-	-	4	-	9	-	-	-	-	-	7	-	-	-	-	45	
Des Moines	-	-	12	-	-	-	-	9	-	-	5	-	2	-	-	-	-	1	-	-	-	-	-	-	1	-	-	-	-	-	-	-	14	1	-	-	-	46	
Dickinson	-	-	4	-	-	-	-	8	-	-	-	-	2	-	-	-	-	-	-	-	-	-	-	-	-	-	-	-	1	-	-	-	3	-	-	-	-	18	
Dubuque	1	-	48	-	-	1	-	36	1	-	16	-	2	8	-	-	-	3	-	-	-	-	1	1	28	-	106	-	2	2	-	1	28	3	-	-	-	289	
Emmet	-	-	-	-	-	-	-	-	-	-	1	-	2	-	1	-	-	-	-	-	-	-	1	2	-	-	-	-	-	-	-	1	-	-	-	-	8		
Fayette	-	-	4	-	-	3	-	2	-	-	-	-	4	-	-	-	-	2	-	-	-	-	1	3	-	1	-	-	-	-	-	-	1	-	-	-	-	21	
Floyd	-	-	13	-	-	-	-	1	-	-	-	-	1	-	-	-	-	1	-	-	-	-	-	-	-	1	1	-	-	-	-	-	2	-	-	-	-	20	
Franklin	-	-	3	-	-	-	-	1	-	-	1	-	1	-	-	-	-	-	-	-	-	-	-	-	-	-	1	-	-	-	-	-	-	-	-	-	-	7	
Fremont	-	-	2	-	-	-	-	-	-	-	-	-	-	-	-	-	-	-	-	-	-	-	-	-	-	-	-	-	-	-	-	-	-	-	-	-	1	3	
Greene	-	-	9	-	-	-	-	2	-	-	1	-	1	-	-	-	-	-	-	-	1	-	-	-	-	-	-	-	-	-	-	-	3	-	-	-	-	17	
Grundy	-	-	2	-	-	-	-	-	-	-	-	-	-	-	-	-	-	-	-	-	-	-	-	-	2	-	1	-	-	-	-	-	1	-	-	-	-	6	
Guthrie	-	-	8	-	-	-	-	1	-	-	4	-	2	-	-	-	-	-	-	-	-	-	-	-	-	-	1	-	-	-	-	-	2	-	-	-	-	18	
Hamilton	-	-	3	-	-	-	-	2	-	-	4	-	1	-	1	-	1	-	-	-	-	-	-	-	-	-	1	-	1	-	-	-	7	1	-	-	-	22	
Hancock	-	-	6	-	-	-	-	2	-	-	1	-	-	-	-	-	-	-	-	-	-	-	-	-	-	-	-	-	-	-	-	-	2	-	-	-	-	11	
Hardin	-	-	17	-	-	-	-	1	-	-	1	-	-	-	-	-	-	-	-	-	-	-	-	-	-	-	1	-	-	-	-	-	8	-	-	-	-	28	
Harrison	-	-	4	-	-	-	-	-	-	-	4	-	1	-	-	-	-	1	-	-	-	-	-	-	-	-	1	-	-	-	-	-	3	3	-	-	-	17	
Henry	-	-	3	-	-	-	-	-	-	-	-	-	2	-	-	-	-	-	-	-	-	-	-	-	-	-	-	-	1	-	-	-	5	-	-	-	1	12	
Howard	-	-	6	-	-	-	-	5	-	-	-	-	-	-	-	-	-	-	-	-	-	-	-	-	1	-	-	-	-	-	-	-	1	-	-	-	-	13	
Humboldt	-	-	3	-	-	-	-	-	-	-	1	-	-	-	-	-	-	-	-	-	-	-	-	-	-	-	-	-	-	-	-	-	4	-	-	-	1	9	
Ida	-	-	1	-	-	-	-	-	-	-	-	-	-	-	-	-	-	-	-	-	-	-	-	-	-	-	-	-	-	-	-	-	-	-	-	-	1	2	
Iowa	-	-	12	-	-	-	-	1	-	-	3	-	2	-	-	-	-	-	-	-	-	-	-	-	-	-	-	-	-	-	-	4	-	-	-	-	22		
Jackson	-	-	13	-	-	1	-	8	-	-	4	-	1	-	-	-	-	-	-	-	-	-	-	-	5	-	-	-	1	-	-	-	12	-	-	-	-	45	
Jasper	-	-	14	-	-	-	-	1	-	-	3	-	1	-	1	-	1	-	-	-	-	-	1	2	1	-	1	-	-	-	-	1	10	1	-	-	-	37	
Jefferson	-	-	-	-	-	-	-	5	-	-	1	-	-	1	-	-	-	1	-	-	-	-	-	1	-	-	-	-	-	-	-	-	1	-	-	-	-	10	
Johnson	-	-	41	-	-	1	-	9	3	-	11	-	1	18	-	-	-	20	-	-	-	-	2	-	41	5	9	-	16	1	-	-	41	10	-	-	2	231	
Jones	-	-	14	-	-	-	-	4	-	-	5	-	-	-	-	-	-	1	-	-	-	-	1	-	2	-	1	-	-	-	-	3	-	-	-	-	31		

# Case Counts for September 1, 2016 – August 31, 2017

(Counties K-W)

Confirmed and Probable Cases

	Anaplasmosis	Babesiosis	Campylobacteriosis	Chikungunya	CRE Citrobacter	CRE Enterobacter	CRE Escherichia coli	CRE Klebsiella	Cryptosporidiosis	Cyclosporiasis	Dengue fever	E. coli (STEC)	Ehrlichiosis/Anaplasmosis undetermined	Ehrlichiosis	Giardiasis	Hansen's disease	Hepatitis A	Hepatitis B acute	Hepatitis B chronic	Hepatitis D	Haemophilus influenzae type B	HUS	Lacrosse encephalitis	Legionellosis	Listeria	Lyme	Malaria	Mumps	Non-Hantavirus pulmonary syndrome	Pertussis	Q Fever Acute	Q Fever Chronic	Rocky Mountain spotted fever	Salmonellosis	Shigellosis	Tetanus	Tularemia	West Nile virus	Total
Keokuk	-	-	9	-	-	1	-	-	2	-	-	-	-	-	-	-	-	-	-	-	-	-	-	-	1	-	1	-	-	-	-	1	2	-	-	-	-	-	17
Kossuth	-	-	4	-	-	-	-	-	1	-	-	3	-	-	3	-	-	-	-	-	-	-	-	-	-	1	-	2	-	-	-	-	2	-	-	-	-	-	16
Lee	-	-	1	-	-	-	2	4	4	-	-	-	-	1	1	-	1	-	-	-	-	-	-	-	-	-	-	-	-	-	-	-	-	4	3	-	-	-	21
Linn	1	-	59	-	-	-	-	-	45	3	-	11	-	-	12	-	-	-	21	-	-	-	-	-	-	36	3	10	-	3	-	-	-	60	6	-	-	1	271
Louisa	-	-	3	-	-	-	-	-	-	-	-	-	-	-	1	-	-	-	1	-	-	-	-	-	-	-	-	-	-	-	-	-	1	-	-	-	-	6	
Lucas	-	-	5	-	-	-	-	-	3	-	-	3	-	1	-	-	-	-	1	-	-	-	1	-	-	-	-	-	-	10	-	-	-	-	-	-	-	24	
Lyon	-	-	7	-	-	-	1	-	10	-	-	4	-	-	-	-	-	-	-	-	-	1	-	-	-	-	-	-	-	-	-	-	-	4	-	-	-	2	29
Madison	-	-	10	-	-	-	-	-	3	-	-	2	-	-	1	-	-	-	-	-	-	-	-	-	-	-	-	-	-	1	-	-	-	3	-	-	-	-	20
Mahaska	-	-	10	-	-	-	-	-	2	2	-	1	-	-	2	-	-	-	-	-	-	-	-	1	-	-	-	-	-	1	-	-	-	6	-	-	-	-	25
Marion	-	-	7	-	-	-	-	-	9	-	-	-	-	-	2	-	-	-	1	-	-	-	-	-	-	-	-	1	-	3	-	-	-	7	-	-	-	-	30
Marshall	-	-	6	-	-	-	-	1	1	1	-	2	1	-	1	-	-	-	3	-	-	-	-	-	1	1	2	-	1	-	-	-	-	9	1	-	-	-	31
Mills	-	-	3	-	-	-	-	-	1	-	-	2	-	-	-	-	-	-	-	-	-	-	-	-	-	-	-	-	-	-	-	-	-	6	3	-	-	-	15
Mitchell	-	-	9	-	-	-	-	-	10	-	-	9	-	-	3	-	-	-	-	-	-	-	-	-	-	-	-	-	-	-	-	-	-	2	-	-	-	-	33
Monona	-	-	1	-	-	-	-	-	2	-	-	-	-	-	-	-	-	-	-	-	-	1	-	-	-	-	-	-	-	-	-	-	-	2	-	-	-	-	6
Monroe	-	-	2	-	-	1	-	-	3	-	-	1	-	-	2	-	-	-	-	-	-	-	-	-	-	-	-	-	-	-	-	-	-	4	-	1	-	-	14
Montgomery	-	-	-	-	-	-	2	-	-	-	-	-	-	-	-	-	-	-	1	-	-	-	-	-	-	-	-	-	-	-	-	-	-	-	-	-	-	-	3
Muscatine	-	-	15	-	-	-	-	-	2	1	-	8	-	-	4	-	1	-	2	-	-	-	-	1	-	2	-	1	-	4	-	-	-	11	15	-	-	-	67
O'Brien	-	-	3	-	-	-	-	-	2	-	-	1	-	-	2	-	-	-	-	-	-	-	-	-	-	-	-	-	-	-	-	-	-	5	-	-	-	1	14
Osceola	-	-	2	-	-	-	-	-	-	-	-	-	-	-	1	-	-	-	-	-	-	-	-	-	-	1	-	-	-	-	-	-	-	3	-	-	-	1	8
Page	-	-	2	-	-	-	-	-	-	-	-	2	-	-	-	-	-	-	-	-	-	-	-	-	-	-	-	-	-	-	-	-	-	4	-	-	-	-	8
Palo Alto	-	-	2	-	-	-	-	-	-	-	-	1	-	-	-	-	-	-	1	-	-	-	-	-	-	-	-	-	-	-	-	-	-	-	2	-	-	-	6
Plymouth	-	-	9	-	-	-	-	-	8	-	-	6	-	-	3	-	-	-	1	-	-	-	-	-	-	-	-	1	-	-	-	-	-	4	-	-	-	1	33
Pocahontas	-	-	7	-	-	-	-	-	3	-	-	2	-	-	1	-	-	-	-	-	-	-	-	-	-	-	-	-	-	-	-	-	-	1	-	-	-	-	14
Polk	-	-	123	-	-	1	-	1	96	5	-	18	-	-	51	-	2	6	87	2	-	-	-	2	-	17	6	10	-	45	1	-	1	95	27	-	1	1	597
Pottawattamie	-	-	25	-	-	1	1	-	5	1	-	7	-	1	8	-	-	-	8	-	-	-	-	2	-	3	-	-	-	2	-	-	-	14	17	-	-	1	96
Poweshiek	-	-	4	-	-	-	-	-	-	-	-	-	-	-	-	-	-	-	-	-	-	-	-	1	-	-	-	-	-	1	-	-	-	-	-	-	-	-	6
Ringgold	-	-	1	-	-	-	-	-	1	-	-	-	-	-	-	-	-	-	-	-	-	-	-	-	-	-	-	-	-	-	-	-	-	-	-	-	-	-	2
Sac	-	-	13	-	-	-	-	-	3	-	-	-	-	-	2	-	-	-	-	-	-	-	-	-	-	-	-	-	-	-	-	-	-	5	-	-	-	-	24
Scott	-	-	27	1	-	1	1	-	9	1	-	8	-	-	11	-	1	2	22	-	1	-	-	8	-	12	-	2	1	26	-	-	-	25	15	-	-	1	175
Shelby	-	-	8	-	-	-	-	-	6	-	-	1	-	-	-	-	-	1	1	-	-	-	-	-	-	-	-	-	-	-	-	-	-	6	-	-	-	1	24
Sioux	-	-	27	-	-	-	-	-	30	2	-	4	-	-	9	-	-	-	1	-	-	-	-	-	-	1	-	-	-	-	-	-	-	17	1	-	-	8	101
Story	-	1	36	-	1	-	-	-	17	2	-	3	-	2	13	-	1	-	7	-	-	-	-	-	4	2	17	-	-	-	-	-	-	17	5	-	1	1	130
Tama	-	-	4	-	-	1	-	-	2	-	-	1	-	-	-	-	-	-	1	-	-	-	-	-	-	2	-	1	-	-	-	-	-	13	-	-	-	-	25
Taylor	-	-	1	-	-	-	-	-	1	-	-	1	-	-	-	-	-	-	-	-	-	-	-	-	-	-	-	-	-	-	-	-	-	1	-	-	-	-	4
Union	-	-	7	-	-	-	-	-	6	-	-	1	-	-	-	-	-	-	1	-	-	-	-	-	-	-	-	-	-	-	-	-	-	2	-	-	-	-	18
Van Buren	-	-	5	-	-	-	1	-	2	-	-	-	-	-	-	-	-	-	-	-	-	-	-	-	-	-	-	-	-	-	-	-	-	-	-	-	-	-	9
Wapello	-	-	20	-	-	-	-	-	8	-	-	2	-	-	-	-	-	-	6	-	-	-	-	-	1	1	-	-	-	2	1	-	-	2	-	-	-	-	43
Warren	-	1	11	-	-	-	-	-	14	-	-	1	-	-	9	-	-	-	-	-	-	-	-	-	-	-	-	4	-	12	-	-	-	13	1	-	1	-	67
Washington	-	-	9	-	-	-	-	-	-	-	-	3	-	-	-	-	-	-	-	-	-	-	-	-	-	1	-	-	-	3	-	-	-	4	2	-	-	-	22
Wayne	-	-	2	-	-	-	-	-	-	-	-	-	-	-	-	-	-	-	1	1	-	-	-	-	-	-	-	-	-	-	-	-	-	-	-	-	-	-	4
Webster	-	-	7	-	-	-	-	-	7	-	-	1	-	-	1	-	-	-	-	-	-	-	-	-	-	2	-	-	-	1	-	-	-	8	6	-	-	-	33
Winnebago	1	-	3	-	-	-	-	-	1	-	-	-	-	-	-	-	-	-	-	-	-	-	-	-	1	-	-	-	-	-	-	-	-	2	-	-	-	-	8
Winneshiek	-	-	15	-	-	-	-	-	14	1	-	1	-	-	2	-	-	-	-	-	-	-	-	-	-	5	-	11	-	-	-	-	-	5	1	-	-	-	55
Woodbury	1	-	17	-	1	2	-	-	20	-	-	3	-	-	3	1	-	1	12	-	-	-	-	-	-	1	-	-	-	4	-	-	1	21	3	-	-	1	92
Worth	-	-	7	-	-	-	-	-	7	-	-	2	-	-	-	-	-	-	-	-	-	-	-	-	-	-	-	-	-	-	-	-	-	1	-	-	-	-	17
Wright	-	-	4	-	-	-	-	-	-	-	-	1	-	-	3	-	-	-	-	-	-	-	-	-	-	-	-	-	-	-	-	-	-	3	-	-	-	-	11
<b>Total</b>	<b>7</b>	<b>3</b>	<b>1030</b>	<b>1</b>	<b>3</b>	<b>15</b>	<b>13</b>	<b>9</b>	<b>581</b>	<b>26</b>	<b>1</b>	<b>239</b>	<b>1</b>	<b>10</b>	<b>239</b>	<b>1</b>	<b>10</b>	<b>10</b>	<b>237</b>	<b>4</b>	<b>2</b>	<b>6</b>	<b>1</b>	<b>31</b>	<b>3</b>	<b>232</b>	<b>20</b>	<b>226</b>	<b>1</b>	<b>169</b>	<b>14</b>	<b>1</b>	<b>8</b>	<b>730</b>	<b>142</b>	<b>1</b>	<b>3</b>	<b>30</b>	<b>4060</b>

# Campylobacteriosis Summary

September 1, 2016 – August 31, 2017

## 128

Statewide campylobacteriosis cases in August (confirmed and probable)

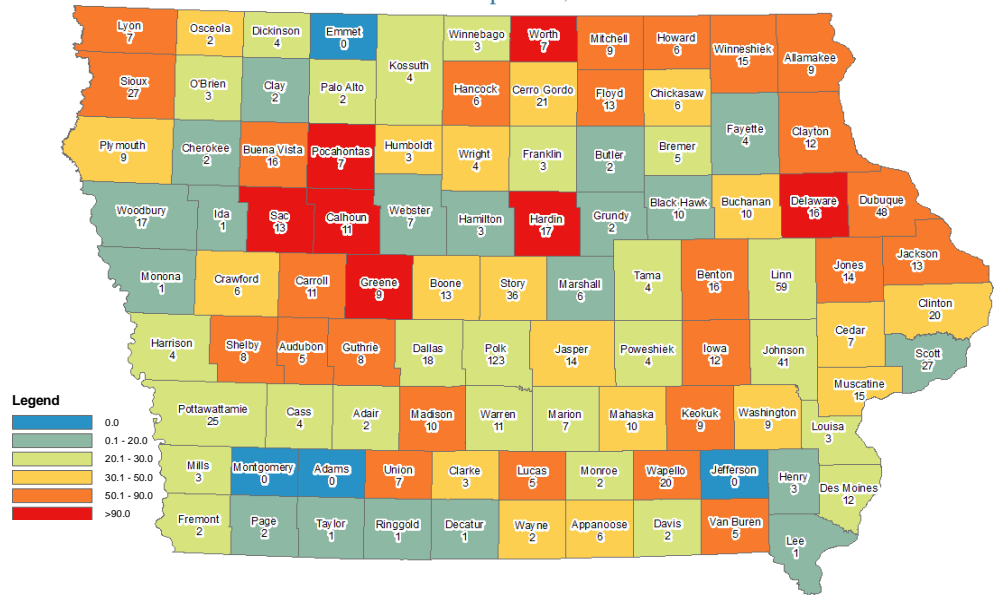
## 1030

Statewide campylobacteriosis cases in the past 12 months (confirmed and probable)

## 576

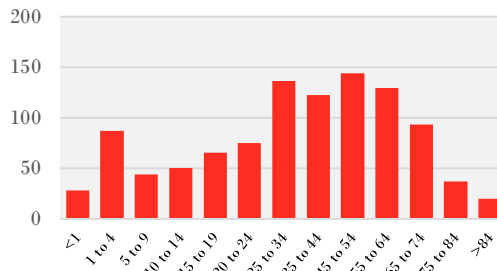
Average statewide campylobacteriosis cases in the previous 5 years for the same time period (confirmed and probable)

12 Month county rates of campylobacteriosis cases per 100,000

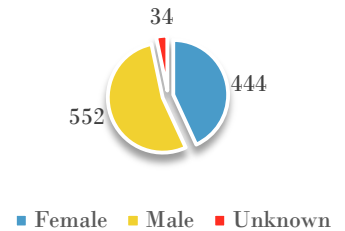


Note that rates based on <20 cases are not reliable and should be interpreted with caution

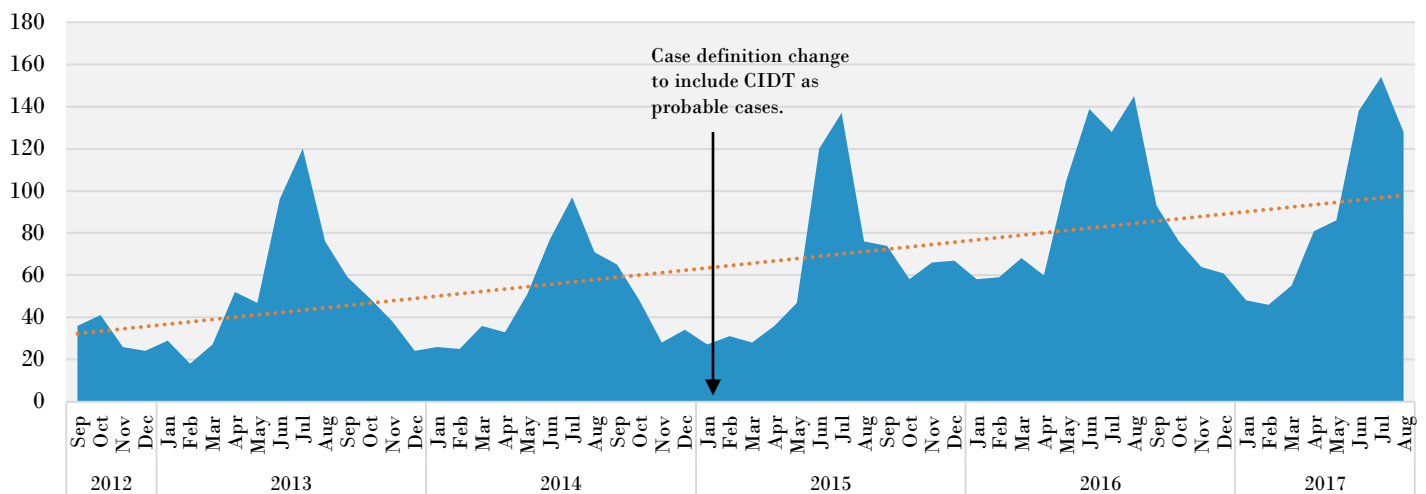
Campylobacteriosis cases by age past 12 months



Campylobacteriosis cases by gender past 12 months



Reported campylobacteriosis cases by date of onset or first lab result



# Cryptosporidiosis Summary

September 1, 2016 – August 31, 2017

89

Statewide cryptosporidiosis cases in August (confirmed and probable)

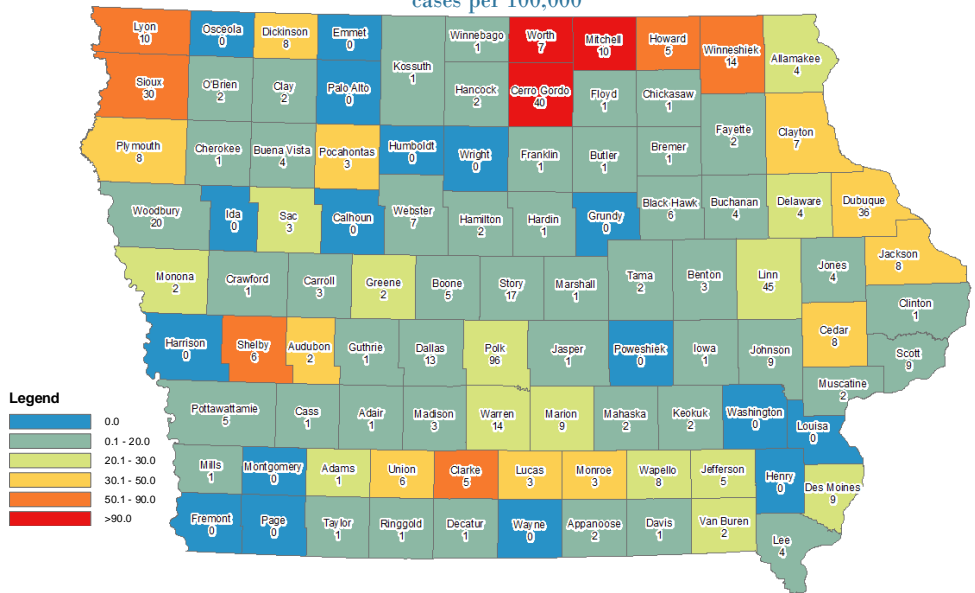
581

Statewide cryptosporidiosis cases in the past 12 months (confirmed and probable)

543

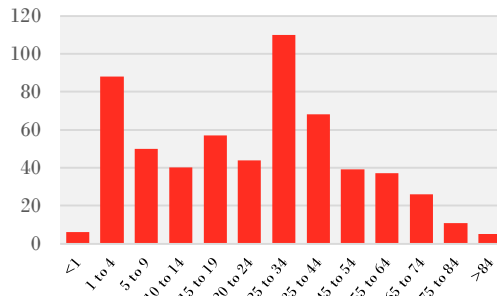
Average statewide cryptosporidiosis cases in the previous 5 years for the same time period (confirmed and probable)

12 Month county rates of cryptosporidiosis cases per 100,000

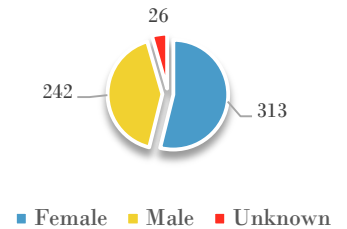


Note that rates based on <20 cases are not reliable and should be interpreted with caution

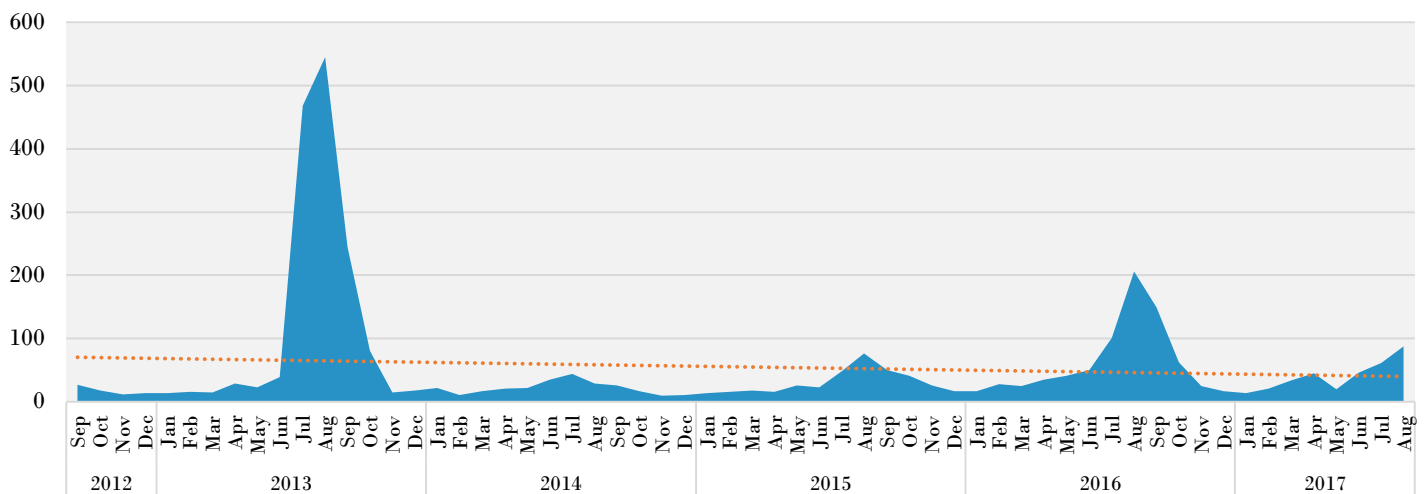
Cryptosporidiosis cases by age past 12 months



Cryptosporidiosis cases by gender past 12 months



Reported cryptosporidiosis cases by date of onset or first lab result



# E. coli (STEC) Summary

September 1, 2016 – August 31, 2017

## 40

Statewide E. coli (STEC) cases in August (confirmed, probable, and suspect\*)

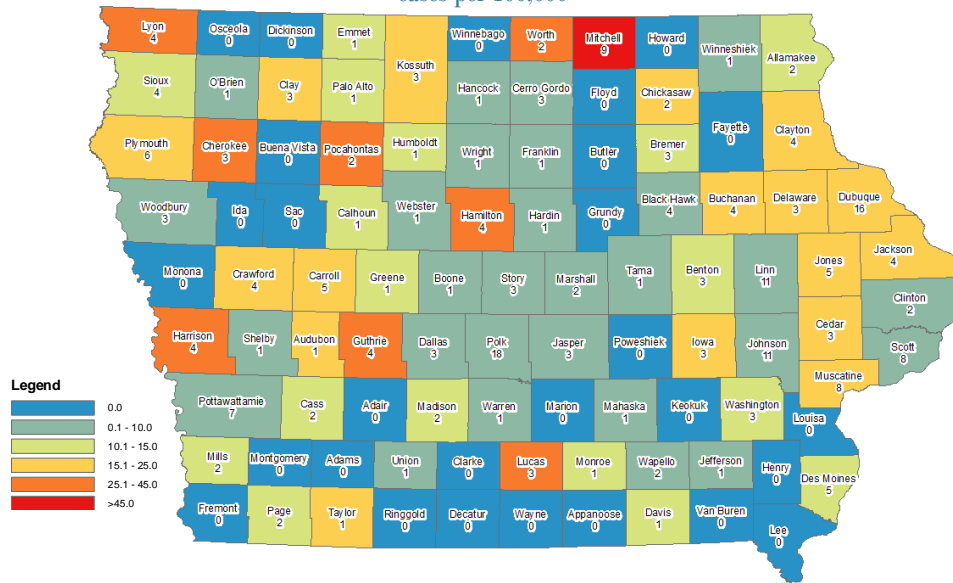
## 239

Statewide E. coli (STEC) cases in the past 12 months (confirmed and probable)

## 170

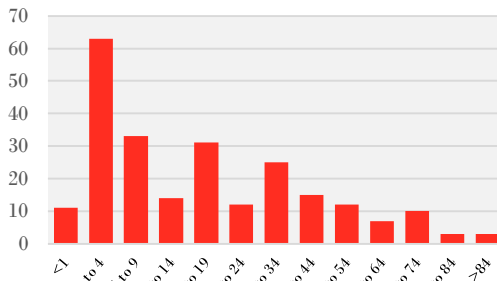
Average statewide E. coli (STEC) cases in the previous 5 years for the same time period (confirmed and probable)

12 Month county rates of E. coli (STEC) cases per 100,000

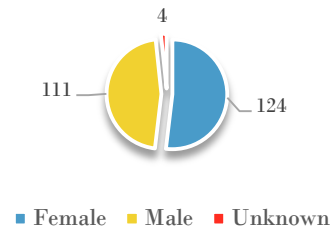


Note that rates based on <20 cases are not reliable and should be interpreted with caution

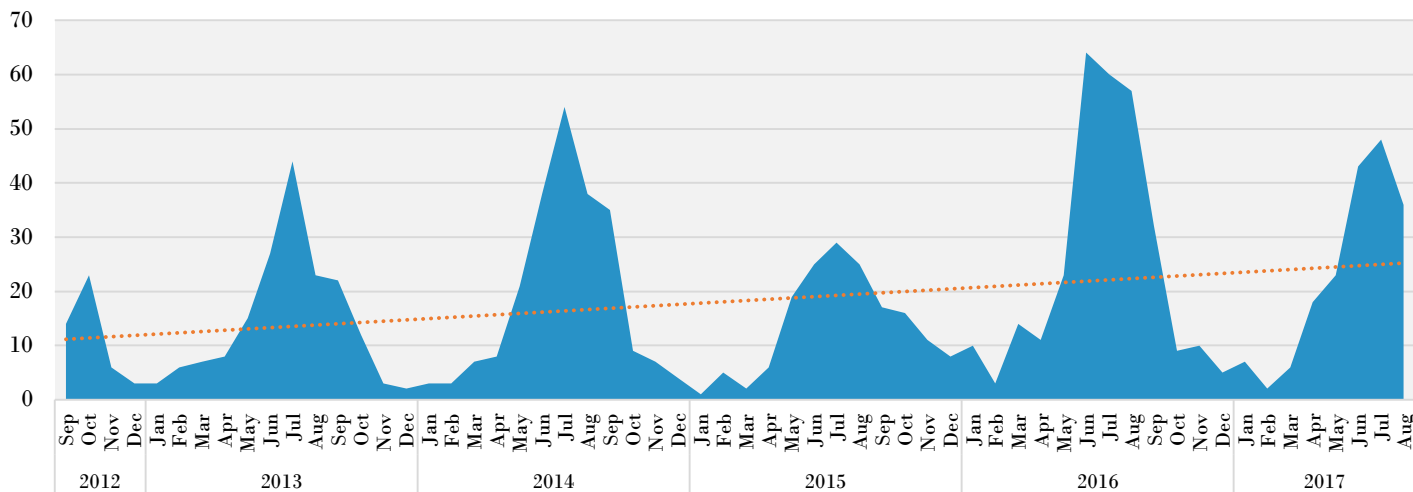
E. coli (STEC) cases by age past 12 months



E. coli (STEC) cases by gender past 12 months



Reported E. coli (STEC) cases by date of onset or first lab result



\*CADE began using the suspect case definition as a final classification on Jan 1, 2017. Suspect cases are not included in the official case count but only meant to better estimate burden of disease. Any counts in this report from dates prior to Jan 1, 2017 do not include suspect cases.

# Mumps Summary

September 1, 2016 – August 31, 2017

4

Statewide mumps cases in August (confirmed, probable, and suspect\*)

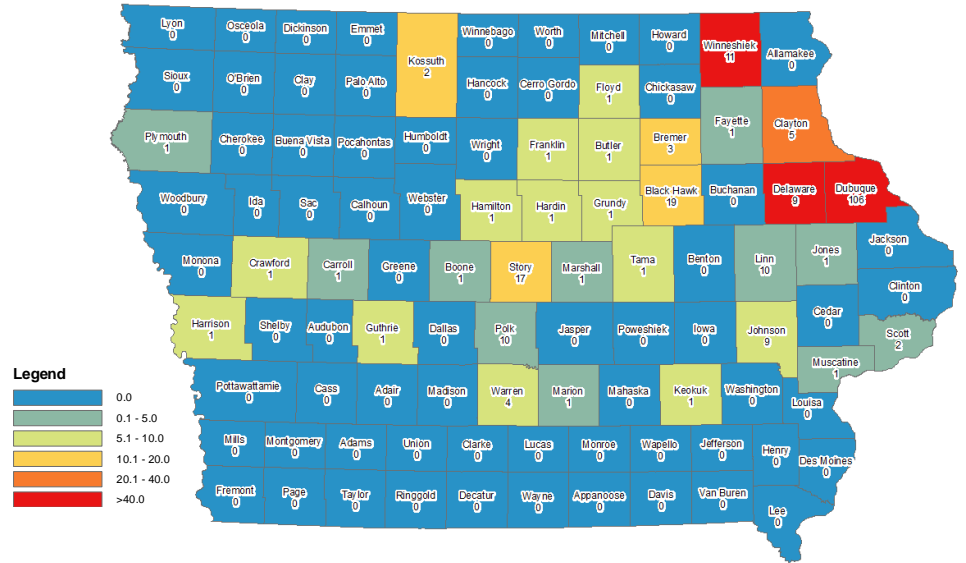
226

Statewide mumps cases in the past 12 months (confirmed and probable)

207

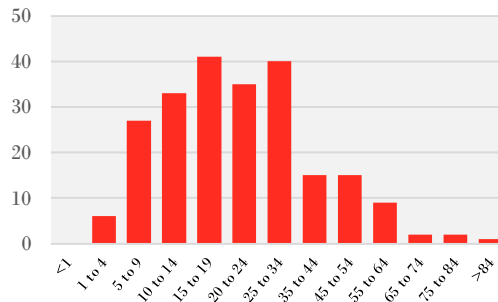
Average statewide mumps cases in the previous 5 years for the same time period (confirmed and probable)

12 Month county rates of mumps cases per 100,000

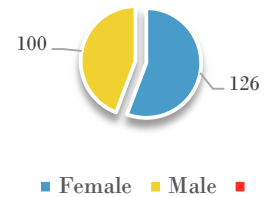


Note that rates based on <20 cases are not reliable and should be interpreted with caution

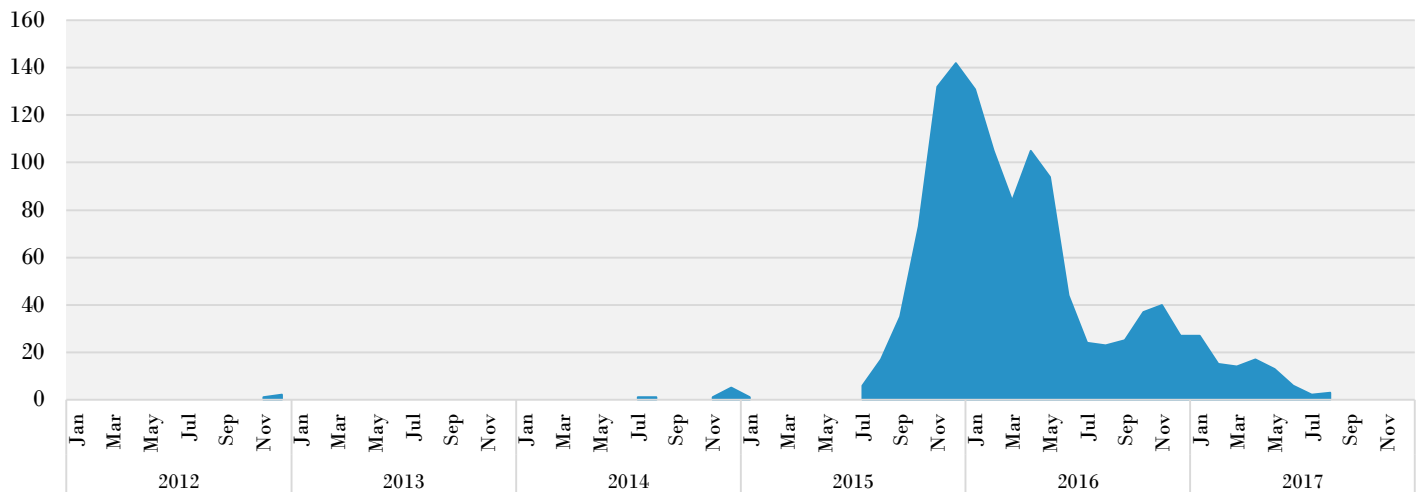
Mumps cases by age past 12 months



Mumps cases by gender past 12 months



Reported mumps cases by date of onset or first lab result

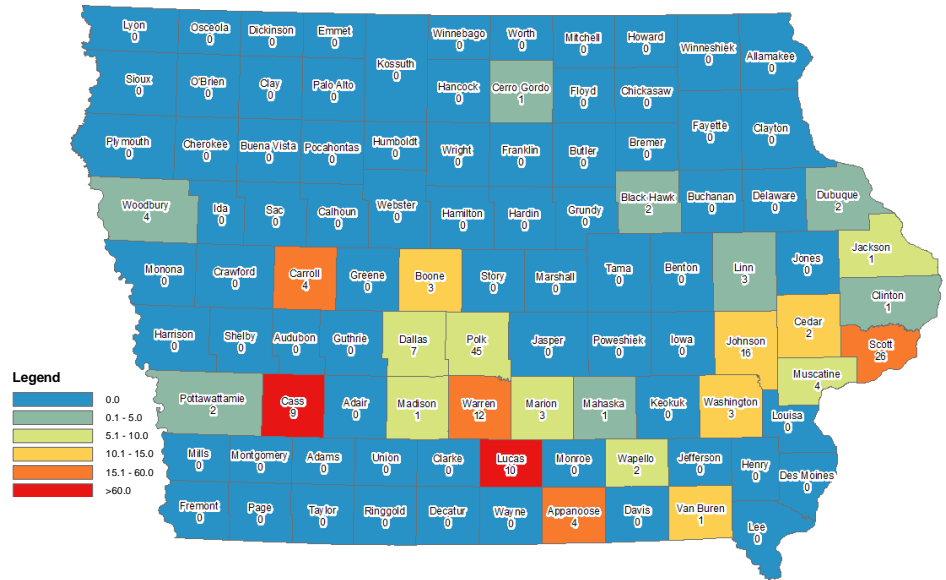


\*CADE began using the suspect case definition as a final classification on Jan 1, 2017. Suspect cases are not included in the official case count but only meant to better estimate burden of disease. Any counts in this report from dates prior to Jan 1, 2017 do not include suspect cases.

# Pertussis Summary

September 1, 2016 – August 31, 2017

12 Month county rates of pertussis cases per 100,000



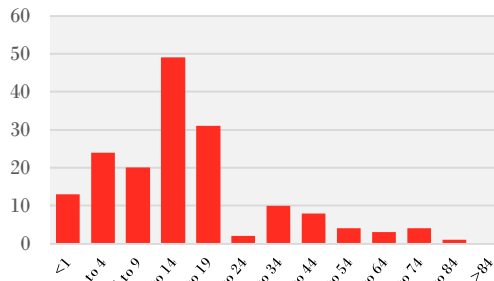
**11**  
Statewide pertussis cases in August (confirmed, probable, and suspect\*)

**169**  
Statewide pertussis cases in the past 12 months (confirmed and probable)

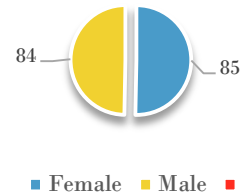
**261**  
Average statewide pertussis cases in the previous 5 years for the same time period (confirmed and probable)

Note that rates based on <20 cases are not reliable and should be interpreted with caution

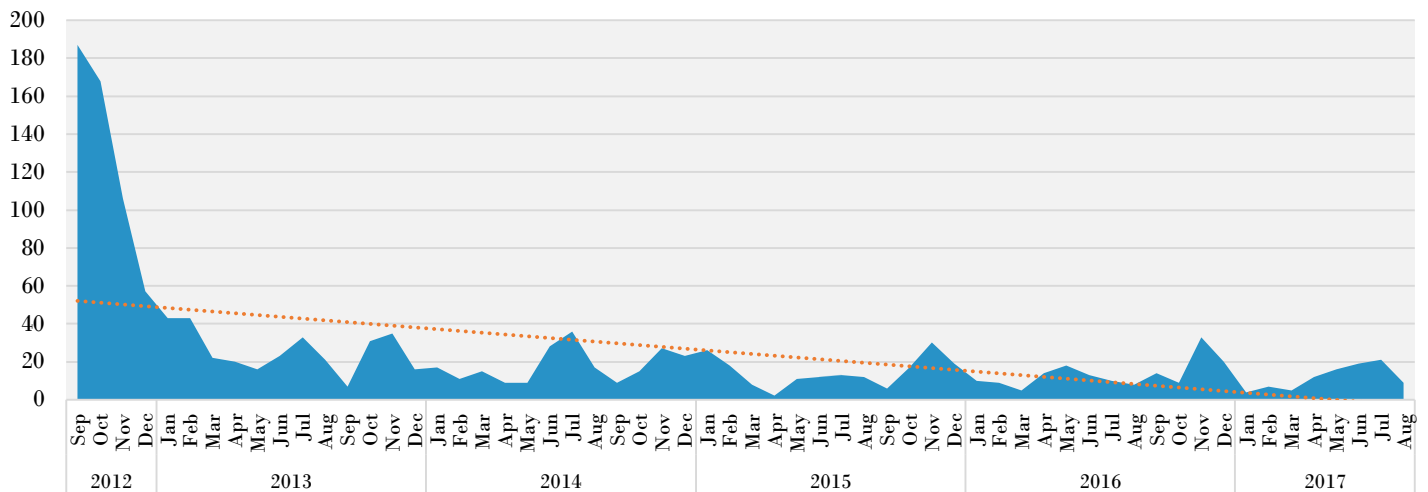
Pertussis cases by age past 12 months



Pertussis cases by gender past 12 months



Reported pertussis cases by date of onset or first lab result



\*CADE began using the suspect case definition as a final classification on Jan 1, 2017. Suspect cases are not included in the official case count but only meant to better estimate burden of disease. Any counts in this report from dates prior to Jan 1, 2017 do not include suspect cases.

# Salmonellosis Summary

September 1, 2016 – August 31, 2017

71

Statewide salmonellosis cases in August (confirmed and probable)

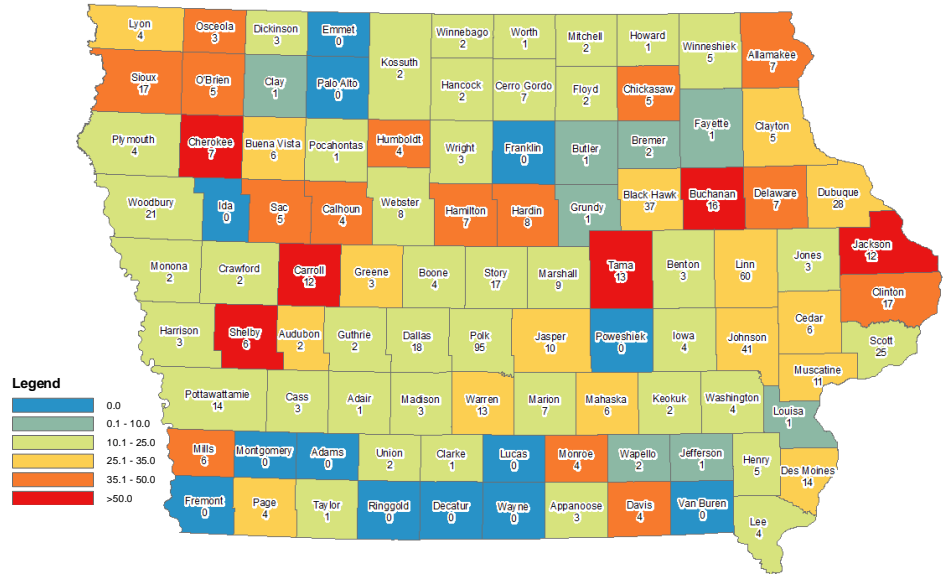
730

Statewide salmonellosis cases in the past 12 months (confirmed and probable)

492

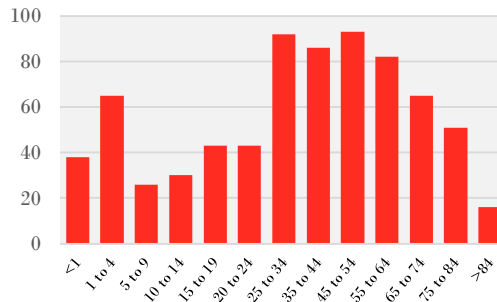
Average statewide salmonellosis cases in the previous 5 years for the same time period (confirmed and probable)

12 Month county rates of salmonellosis cases per 100,000

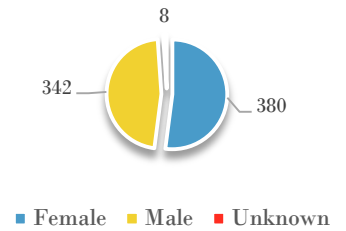


Note that rates based on <20 cases are not reliable and should be interpreted with caution

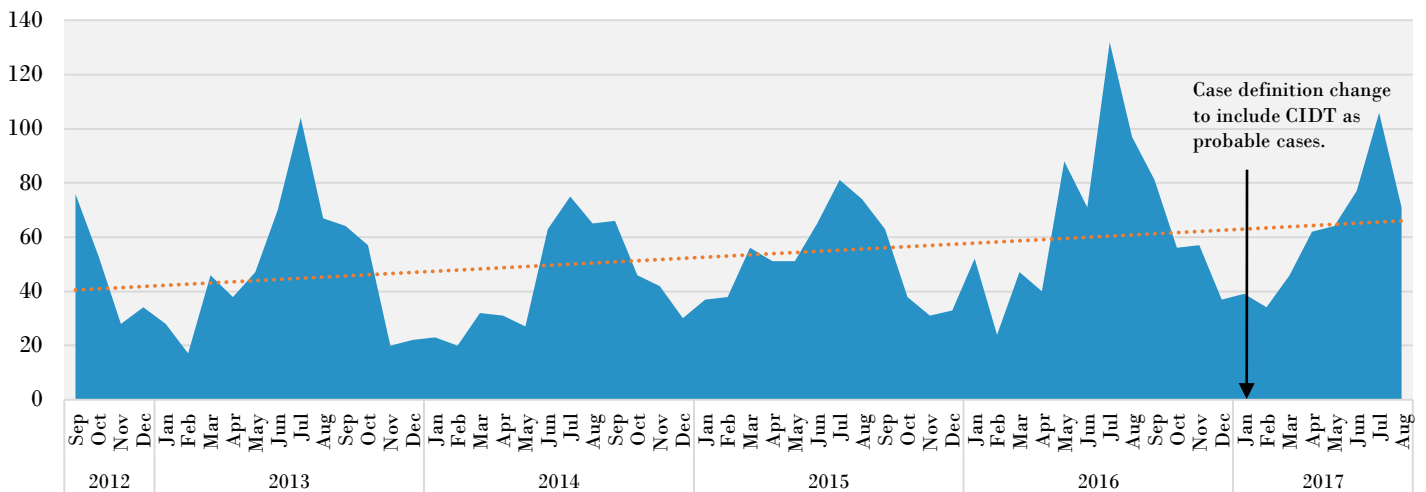
Salmonellosis cases by age past 12 months



Salmonellosis cases by gender past 12 months



Reported salmonellosis cases by date of onset or first lab report





# Shigellosis Summary

September 1, 2016 – August 31, 2017

17

Statewide shigellosis cases in August (confirmed and probable)

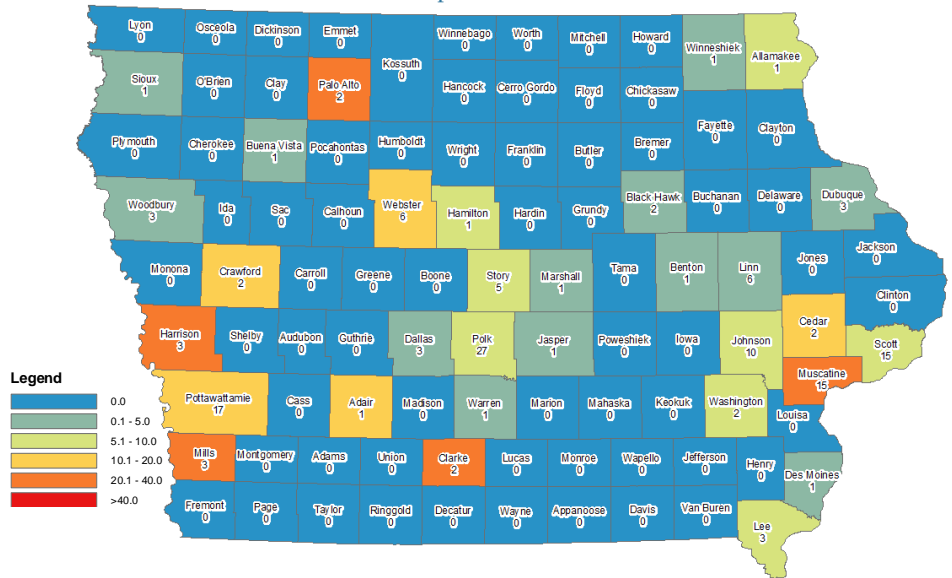
142

Statewide shigellosis cases in the past 12 months (confirmed and probable)

332

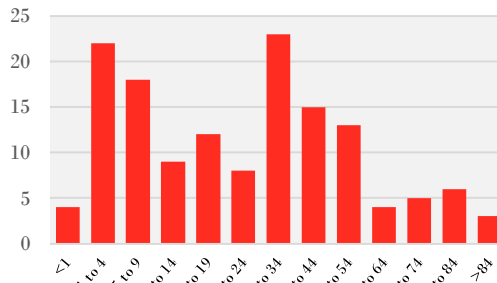
Average statewide shigellosis cases in the previous 5 years for the same time period (confirmed and probable)

12 Month county rates of shigellosis cases per 100,000

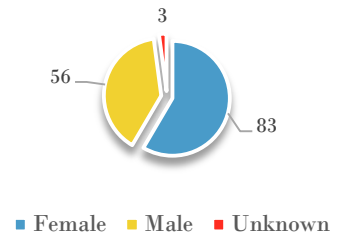


Note that rates based on <20 cases are not reliable and should be interpreted with caution

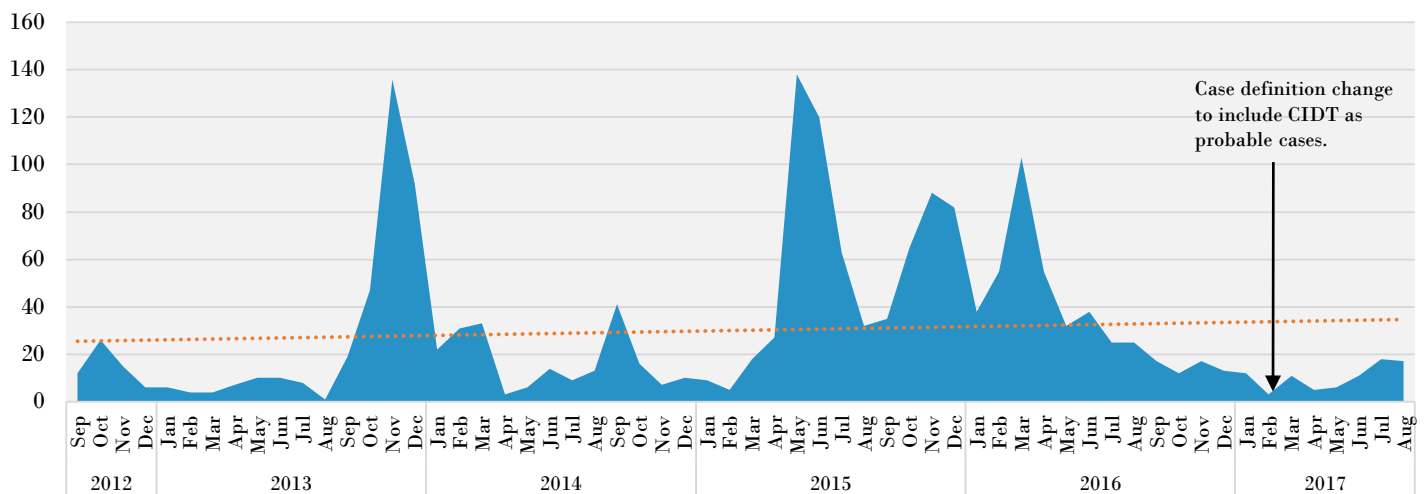
Shigellosis cases by age past 12 months



Shigellosis cases by gender past 12 months



Shigellosis cases by date of onset or first lab result



# IOWA DEPARTMENT OF PUBLIC HEALTH

[WWW.IDPH.IOWA.GOV](http://WWW.IDPH.IOWA.GOV)

(515) 281-7689

## CENTER FOR ACUTE DISEASE EPIDEMIOLOGY

[WWW.IDPH.IOWA.GOV/CADE](http://WWW.IDPH.IOWA.GOV/CADE)

1-800-362-2736

Gerd Clabaugh, MPA	Director
Sarah Reisetter, JD	Deputy Director
Ken Sharp, MPA, RS	Division Director
Patricia Quinlisk, MD, MPH	Medical Director/State Epidemiologist
Ann Garvey, DVM, MPH, MA	Public Health Veterinarian/ Deputy State Epidemiologist

## CENTER FOR ACUTE DISEASE EPIDEMIOLOGY STAFF AND STUDENTS

Shawnice Cameron	Administrative Assistant
Amanda Casson, BA	Interview and Outbreak Response Team
Julie Coughlin, MPH	Vector-Borne Disease Epidemiologist
Chris Galeazzi, MPH	Field Epidemiologist Unit Lead
Amy Hoehne, MPH	Field Epidemiologist
Nick Kalas, MPH	Field Epidemiologist
Jill Newland	Iowa Disease Surveillance System (IDSS) Data Manager
Kemi Oni, MPH	Foodborne Disease Epidemiologist
Rob Ramaekers, MPH, CPH	Surveillance Unit Lead/Vaccine-Preventable Disease Program Coordinator
Scott Seltrecht, MPH	Field Epidemiologist
Kyli Torkelson, BS	Interview and Outbreak Response Team
Ngoc Tran, MPA, CPM	Iowa Disease Surveillance System (IDSS) Coordinator
Lisa Vitale, RN, BSN	Nurse Clinician
Diana Von Stein, MPH	Field Epidemiologist
Andy Weigel, MSW	Epidemiologist/Influenza Surveillance Program Coordinator
Nancy Wilde, BS, LPN	Epidemiologist/Healthcare-Associated Infection Program Coordinator
Ben Williamson	Interview and Outbreak Response Team