



**Iowa**  
a place to grow

**State of Iowa**

**Department of Social Services**

**Bureau of Adult Correction Services**

**WOMEN'S  
REFORMATORY**  
Rockwell City

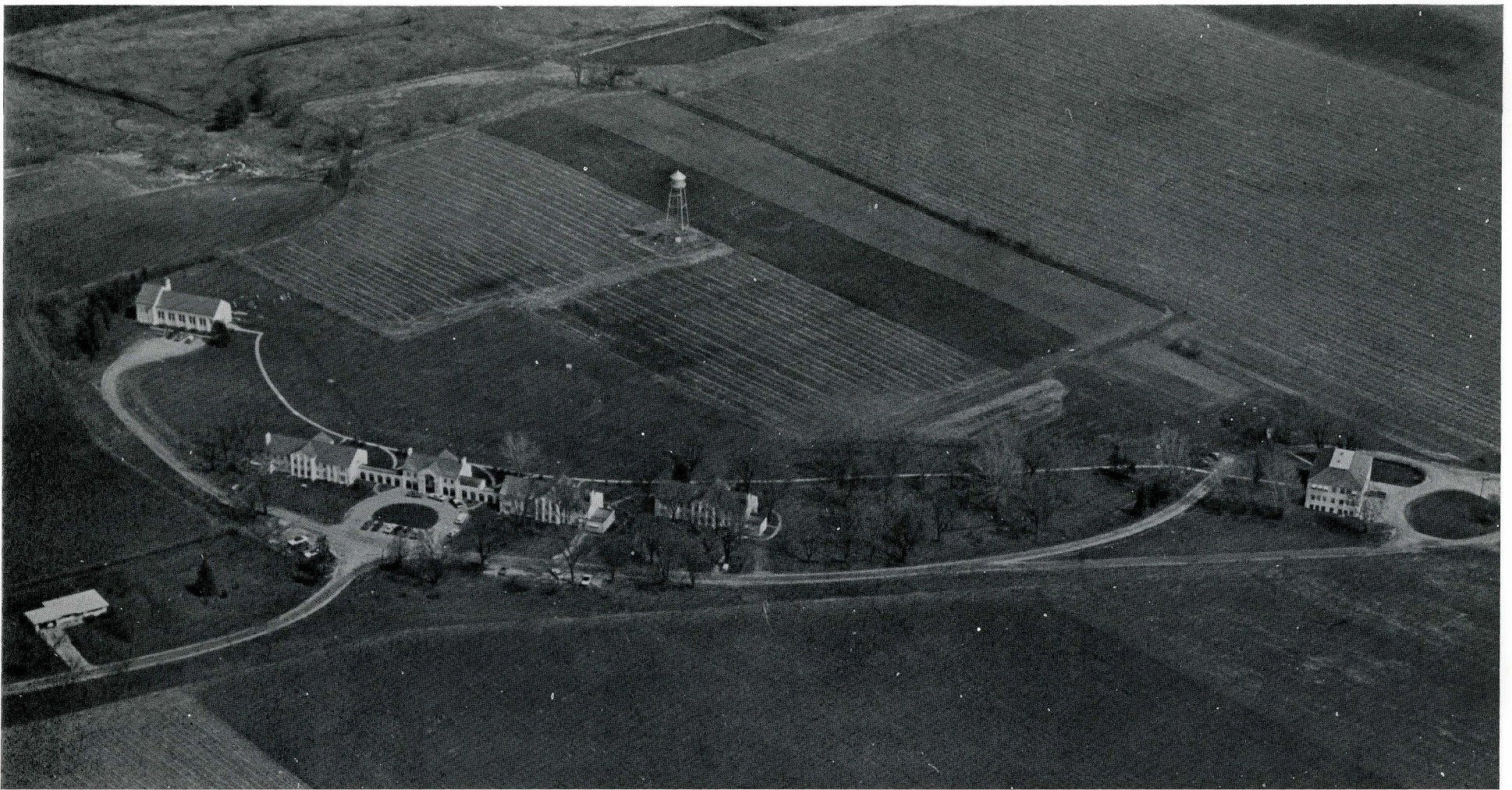
**IOWA SECURITY  
MEDICAL FACILITY**  
Oakdale

**IOWA STATE  
PENITENTIARY**  
Fort Madison

**IOWA STATE  
MEN'S REFORMATORY**  
Anamosa

**RIVERVIEW  
RELEASE CENTER**  
Newton

**IOWA STATE  
INDUSTRIES**  
Anamosa — Fort Madison



# Women's Reformatory

Rockwell City, Iowa 50579

# **Iowa State Reformatory for Women**

Rockwell City, Iowa

The Iowa State Reformatory for Women, located on Highway 20 1½ miles east of Rockwell City, was established in 1918. Since its original construction it has been an open institution devoid of perimeter walls or fences.

Comprising the unit are 7 buildings: 3 housing cottages, an administration building, educational building, power plant, and a multi-purpose building. Housing capacity, since inception, has been 77, providing primarily private rooms to residents.

Staff personnel make up units of: administration, business office-personnel department, medical department, educational department, maintenance, community placement, night security and cottage life. Consultant services are provided by medical, psychiatric-psychological and educative personnel.

Adult female offenders sentenced to county jails in excess of 30 days may be committed to the institution. Upon arrival, clients move through an evaluation process involving assessment by the medical department, psychologist, educational department, vocational rehabilitation, psychiatrist, gathering of social history and behavioral observation by resident staff. The information is compiled to develop a realistic program design relating to the individual client and the particular departments--leading to ultimate release. The procedure moves clients from a structured initial phase towards progressively less structured situations. Program design is intended to elevate skills (educational and/or vocational) while gaining behavioral insight leading to socially productive citizens.

To assist in the accomplishment of program goals, staff work with many community agencies: Legal Aide, probation and parole department, welfare, Goodwill, county mental health, Iowa Central Community College, the Department of Public Instruction, Iowa State Employment Service, state and local law-enforcement agencies and various volunteer groups. These supportive services are vital adjuncts to institution programs leading to developing and maintaining appropriate community adjustments.

The Work Release Law, established in 1967, enables the institution to release offenders for portions of the day to participate in work or educational activities. This program has significantly expanded training opportunities available to offenders in addition to assisting in social re-integration. Only 5% of work releasees have been found to return to the institution after release, compared with 17% of others released.

Each year a great variety of groups tour the institution. Additionally, numerous panels and speeches are made to community groups to reduce the gap of information between the public. It is estimated there is direct contact with 3,000 people annually.

