

# A d d e n d u m

Iowa Department of Transportation  
Office of Contracts

Date of Letting: April 25, 2017  
Date of Addendum: April 20, 2017

<b>B.O.</b>	<b>Proposal ID</b>	<b>Proposal Work Type</b>	<b>County</b>	<b>Project Number</b>	<b>Addendum</b>
002	82-0741-198	BRIDGE – STEEL GIRDER	SCOTT	IM-NHS-074-1(198)5--03-82	25APR002A09

Make the following changes to the PROPOSAL SPECIAL PROVISIONS LIST & TEXT:

Replace SP-150181a for MUSSEL CONSERVATION with attached SP-150181b.



**SPECIAL PROVISIONS  
FOR  
MUSSEL CONSERVATION**

**Scott County  
IM-NHS-074-1(197)5--03-82  
IM-NHS-074-1(198)5--03-82**

**Effective Date  
April 25, 2017**

**THE STANDARD SPECIFICATIONS, SERIES 2015, ARE AMENDED BY THE FOLLOWING MODIFICATIONS AND ADDITIONS. THESE ARE SPECIAL PROVISIONS AND THEY SHALL PREVAIL OVER THOSE PUBLISHED IN THE STANDARD SPECIFICATIONS.**

**150181b.01 DESCRIPTION.**

- A.** The work under this contract is located in an environmentally sensitive area within the Mississippi River (the River). This work has the potential to impact state and federally threatened and endangered mussels living in the River thus requiring areas in the river to be designated as Environmentally-Sensitive Areas (Restricted Access) [ES Areas]. No disturbances to the river bed, no propulsion, no propellers or motorized vehicles will be allowed in ES Areas. The ES Areas are shown as red hatched areas in Figures 1 and 2.
- B.** The Contractor's construction operations that would impact the river bed, including mechanical dredging, temporary slips, temporary supports (falsework), temporary bridge/work platform and temporary cofferdams, are allowed in the yellow shaded areas designated as I-74 Bridge Replacement Authorized Construction Areas [AC Areas], as shown in Figure 1. The limits of the AC Areas (yellow shaded) have been approved in the Biological Opinion, the Incidental Take Authorization and the Section 404 permit and are not negotiable.
- C.** In areas immediately adjacent to the yellow shaded AC Areas, where conditions permit (i.e. water depths sufficient), the Contractor may have floating barges/work platforms. The floating elements shall, in no way, touch the river bed. A "pre-approved" area for tied downs, mooring posts or tug boats is identified as Barge Anchorage Areas [BA Areas, pink shaded in Figure 1.
- D.** Work in the areas of the River outside of the ES Areas (red hatched) and AC Areas (yellow shaded) is designated "Conventional River Construction" in Figure 1, and is subject to typical USACE and DNR permitting and Coast Guard navigation requirements. The Contractor shall make every reasonable effort to execute the construction in a manner so as to minimize any adverse impact of the construction or work on fish, mussels, wildlife, or natural areas.

- E. An exception to the conditions of Article A, above, will be allowed to install and maintain floating silt curtains. If motorized boats are used for this purpose, they shall be chosen to cause the least turbulence and disturbance to the river bed, and shall travel at no wake speed in the ES Areas.

**150181b.02 WORK ZONE REQUIREMENTS.**

- A. Any construction related conditions deemed to be potentially damaging to environmentally sensitive resources by the Engineer shall be rectified immediately or construction will cease until such time as the condition is rectified. At the discretion of the Engineer, construction activities may resume once provisions to rectify the situation are made.
- B. The Contractor's construction operations impacting the river bed are allowed in the yellow shaded AC Areas as shown in Figure 1. These areas shall be protected with temporary sediment control measures in accordance with the details in the contract documents. No work shall commence on this contract until temporary sediment control measures identified in the plans have been installed.
- C. Concurrently with construction, prior to work in the water, silt curtains shall be deployed as depicted in Figure 1 and as detailed in plans. Any additional sediment control measures will be employed as needed, and at the Engineer's discretion, to protect waters of the U.S., threatened and endangered mussels and the City of Moline drinking water intake.
- D. Construction in the River will require access to the River via the Iowa or Illinois bank. Figure 2 identifies areas that are restricted from being used as River access due to endangered mussel inhabitation. No river access will be allowed within the ES Areas identified on Figure 2. Refer to the Special Provisions for Work in the Levee Buffer Zone for restrictions on activities in the vicinity of the Bettendorf Levee along the Iowa bank.
- E. Areas disturbed by dredging (only mechanical dredging is permitted) shall be backfilled with special revetment.
- F. It is the goal of Iowa's and Illinois' Water Quality Standards that all uses of the river be maintained and protected. The dredging will cease if the water quality standards of either the State of Iowa or the State of Illinois are violated.

**150181b.03 PROTECTED SPECIES.**

- A. Sylvan Slough, downstream of the project area, has been identified by the US Fish and Wildlife service as an Essential Habitat Area for the federally endangered Higgins eye pearly mussels. In addition, Sylvan Slough is inhabited by two other federally endangered mussels: spectacle case mussel and sheepsnose mussel.
- B. If during the course of construction, any discoveries of additional protected plant or animals are made in the project area, the Contractor shall notify the Engineer immediately.
- C. It will be the Contractor's responsibility to ensure that the day-to-day operations of the project comply with this Special Provision. The Engineer will be available throughout the project to offer guidance to the Contractor regarding compliance with this Special Provision. Any environmental monitoring, required by the US Fish and Wildlife Service, of environmentally sensitive areas or areas where mussels could be present will be performed by the contracting authority or its designee and coordinated with the contractor through the Engineer.

**150181b.04 MATERIALS.**

- A. Backfill for areas disturbed by dredging (special revetment) is included in contract documents.

**B.** Silt curtain per Developmental Specifications for Floating Silt Curtain.

**150181b.05 METHOD OF MEASUREMENT AND BASIS OF PAYMENT.**

No separate payment will be made for costs incurred due to compliance with this Special Provision.

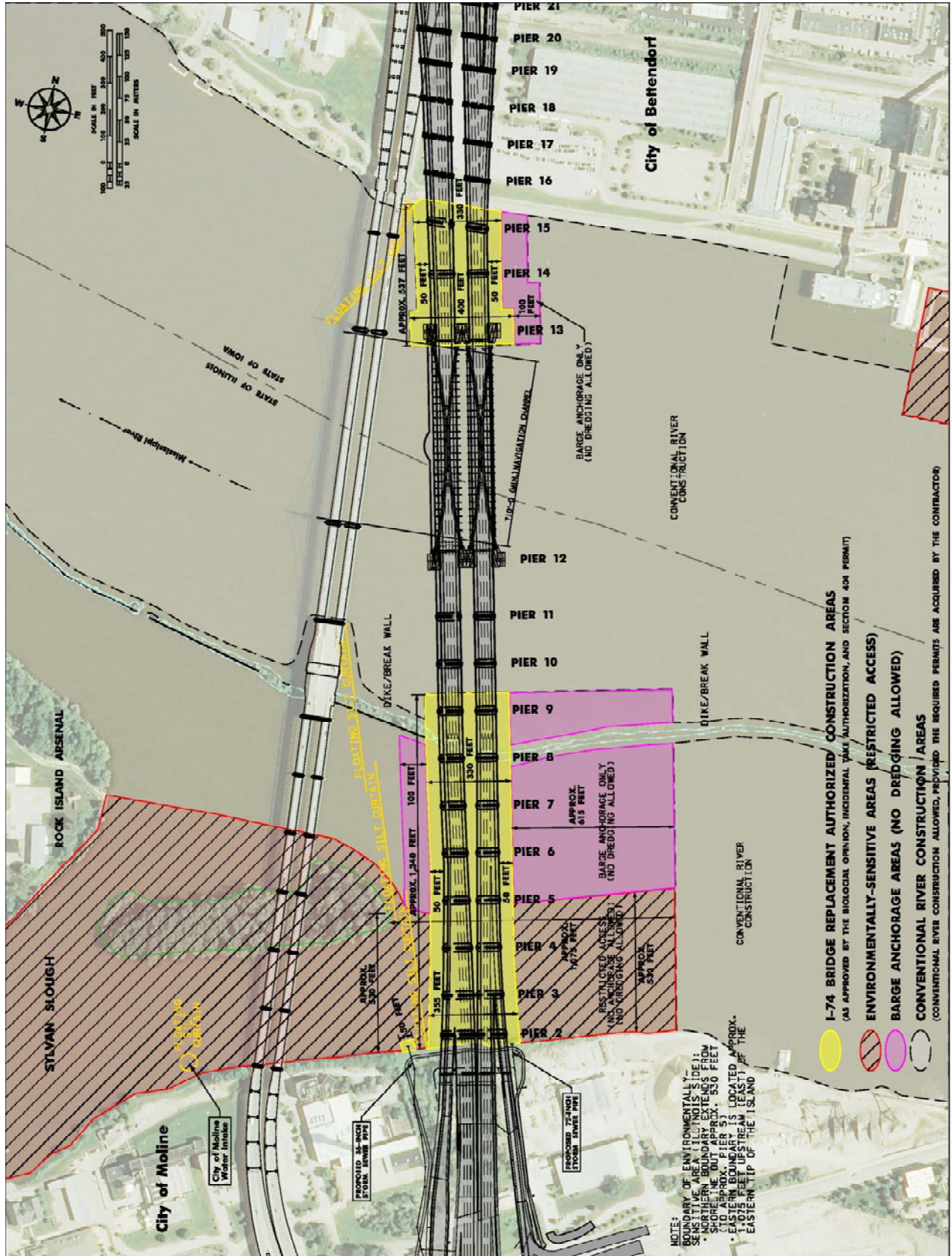


Figure 1. Construction area map, I-74 over the Mississippi River.



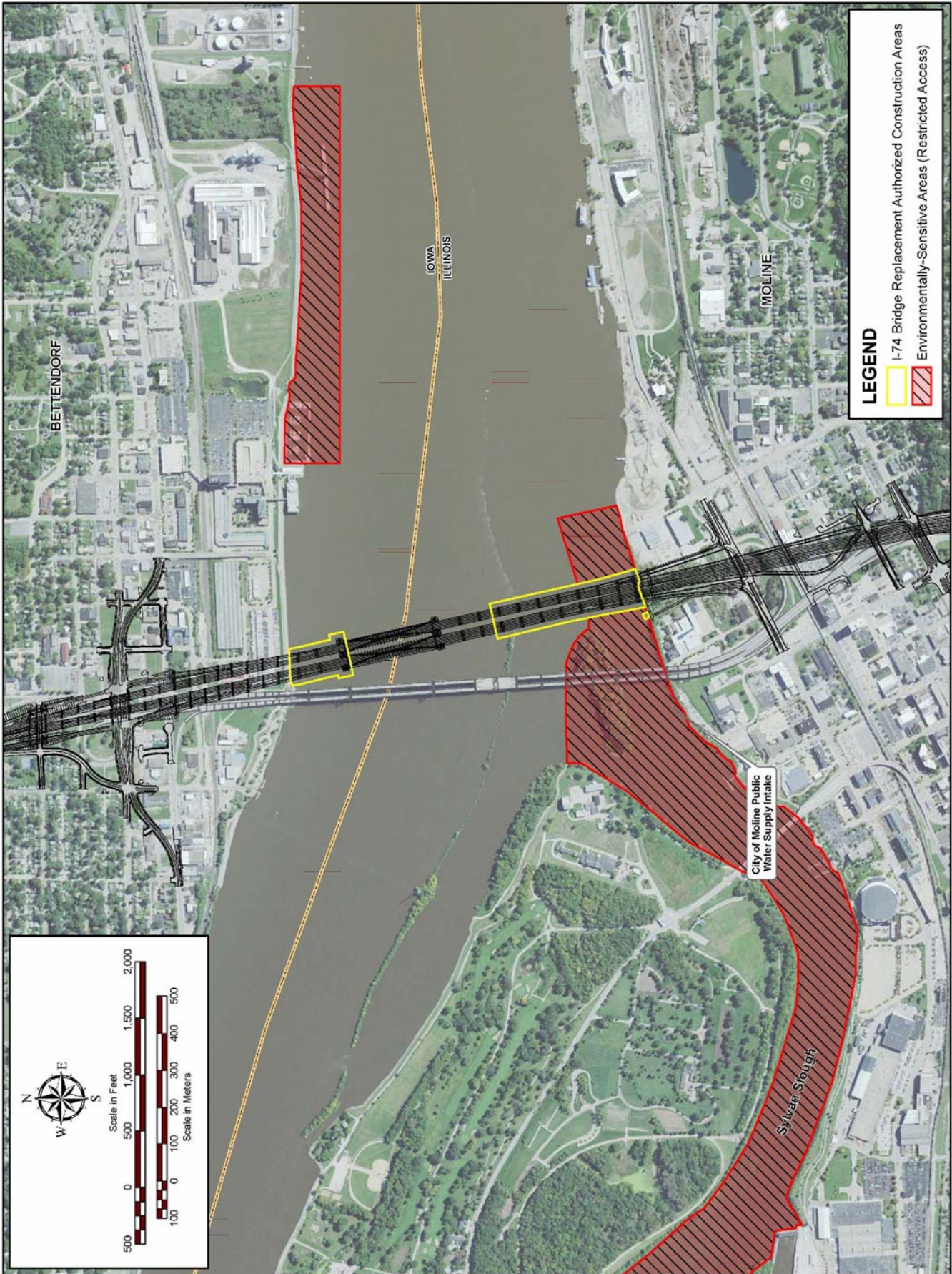


Figure 2. Project constraints map, I-74 over the Mississippi River.