



**Food Assistance Program - State Summary**

October, 2016

				% of Change Over	
	<u>October, 2016</u>	<u>September, 2016</u>	<u>October, 2015</u>	<u>Last Year</u>	
<b>*Households</b>					
FIP Program	10,362	10,376	11,053	-6.3%	
Food Assistance Only	95,812	95,462	83,636	14.6%	
Other Programs	71,052	71,975	85,403	-16.8%	
Total Households	177,226	177,813	180,092	-1.6%	
<b>*Recipients</b>					
FIP Program	33,167	33,207	34,810	-4.7%	
Food Assistance Only	195,875	194,063	150,432	30.2%	
Other Programs	148,084	151,208	199,443	-25.8%	
Total Recipients	377,126	378,478	384,685	-2.0%	
<b>*Allotments</b>					
FIP Program	\$4,224,740	\$ 4,246,544	\$ 4,459,860	-5.3%	
Food Assistance Only	\$22,338,071	\$ 22,372,368	\$ 17,825,860	25.3%	
Other Programs	\$15,125,502	\$ 15,682,201	\$ 20,709,400	-27.0%	
Total Allotments	\$41,688,313	\$42,301,113	\$42,995,120	-3.0%	
<b>*Average Allotment per Household</b>					
FIP Program	\$407.71	\$409.27	\$403.50	1.0%	
Food Assistance Only	\$233.14	\$234.36	\$213.14	9.4%	
Other Programs	\$212.88	\$217.88	\$242.49	-12.2%	
Overall Average per Household	\$235.23	\$237.90	\$238.74	-1.5%	
<b>*Average Allotment per Recipient</b>					
FIP Program	\$127.38	\$127.88	\$128.12	-0.6%	
Food Assistance Only	\$114.04	\$115.28	\$118.50	-3.8%	
Other Programs	\$102.14	\$103.71	\$103.84	-1.6%	
Overall Average per Recipient	\$110.54	\$111.77	\$111.77	-1.1%	

**State Fiscal Year to Date**

	<u>SFY-2017</u>	<u>SFY 2016</u>	% of Change over	
			<u>Last Year</u>	
<b>*Allotment</b>				
FIP Program	\$12,654,710	\$13,325,208	-5.03%	
Food Assistance Only	\$66,058,054	\$49,013,167	34.78%	
Other Programs	\$47,619,737	\$64,071,222	-25.68%	
Total Allotment	\$126,332,501	\$126,409,597	-0.06%	

\*All figures on the F-1 report (cases/individuals/expenditures) reflect only the Food Assistance Program.

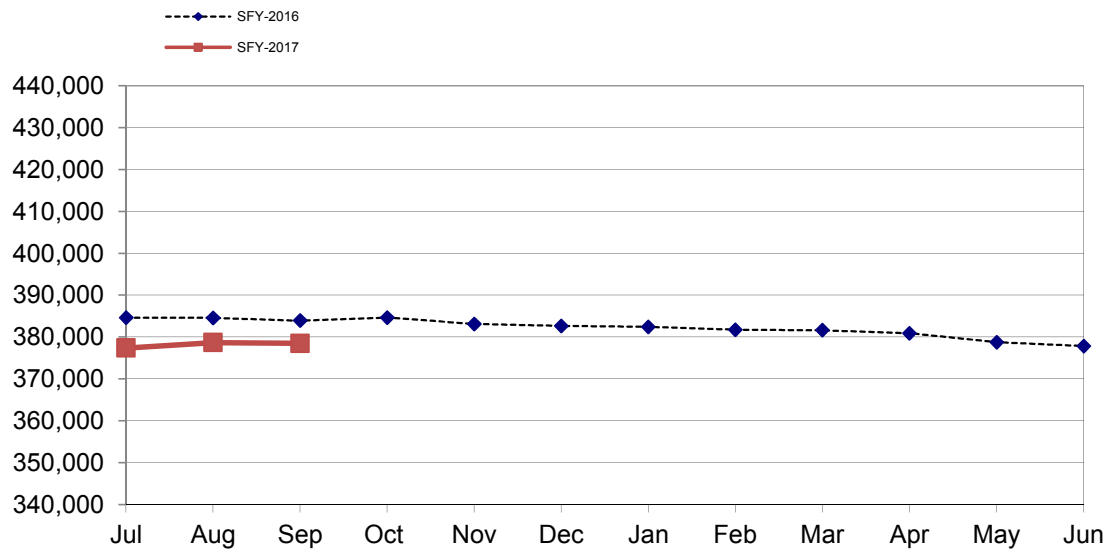
The categories of cases/individuals/expenditures are:

FIP Program (receives food assistance and also receives assistance under the Family Investment Program)

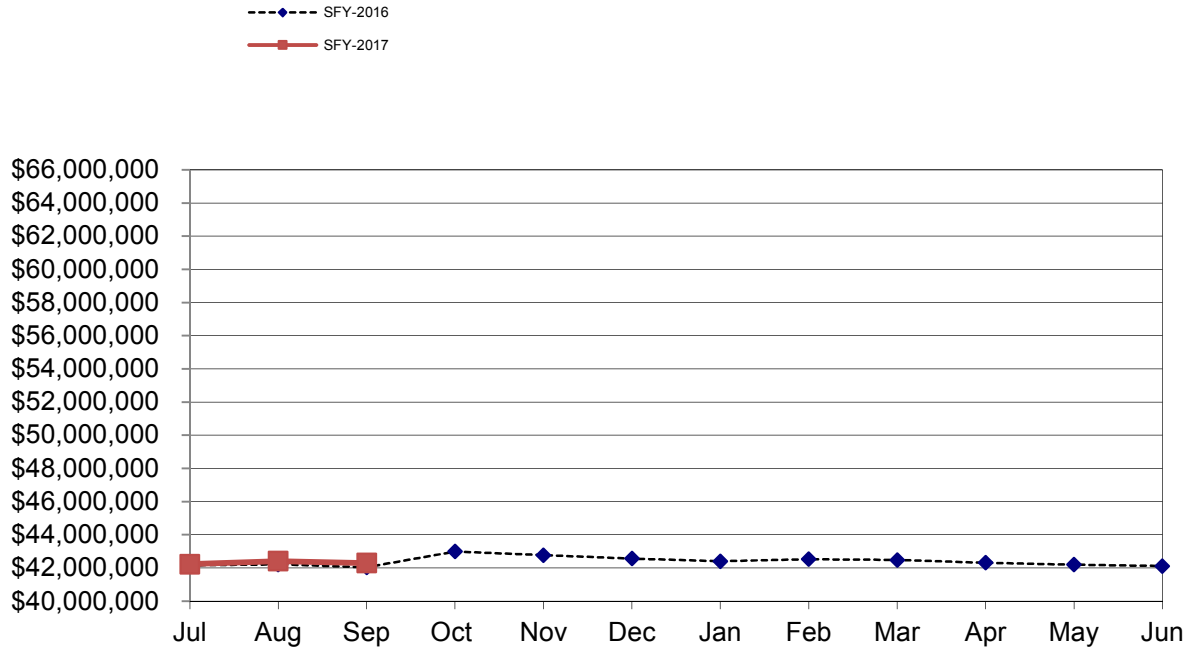
Food Assistance Only (receives food assistance and does not take part in either FIP or the Medicaid program)

Other Programs (receives food assistance and takes part in the Medicaid program)

## Total Food Assistance Recipients



## Total Food Assistance Spending



**Food Assistance Participation by Case Type and County**

County	FIP Program			Food Assistance Only			Other Programs			TOTAL			PARTICIPATION RATE *
	Households	Recipients	Allotment	Households	Recipients	Allotment	Households	Recipients	Allotment	Households	Recipients	Allotment	
<b>Area 1 - Western</b>													
Audubon	18	53	6,805	139	333	35,040	80	140	10,001	237	526	51,846	43.5%
Buena Vista	62	204	26,836	541	1,455	138,048	428	979	90,864	1,031	2,638	255,748	52.5%
Carroll	39	129	17,596	465	1,077	114,028	305	550	51,064	809	1,756	182,688	43.8%
Cass	39	123	14,121	480	1,093	112,031	311	591	52,954	830	1,807	179,106	49.9%
Cherokee	15	37	4,799	319	688	70,557	173	304	25,955	507	1,029	101,311	42.3%
Clay	26	81	9,549	468	1,045	110,290	328	570	48,960	822	1,696	168,799	47.0%
Crawford	80	223	31,904	405	1,026	103,825	333	747	71,047	818	1,996	206,776	38.1%
Dickinson	22	62	8,101	334	768	78,174	248	395	39,376	604	1,225	125,651	46.4%
Emmet	38	121	16,747	276	642	66,792	198	387	37,168	512	1,150	120,707	51.1%
Fremont	19	50	6,781	253	619	61,552	159	314	31,854	431	983	100,187	61.2%
Greene	28	93	11,904	312	761	75,092	196	361	32,304	536	1,215	119,300	52.0%
Guthrie	11	35	4,314	311	692	74,520	152	297	26,459	474	1,024	105,293	42.5%
Harrison	36	111	13,892	439	960	102,198	273	482	43,544	748	1,553	159,634	51.5%
Ida	4	10	850	178	431	40,753	97	162	14,303	279	603	55,906	32.6%
Kossuth	18	46	5,655	313	725	71,027	212	380	32,226	543	1,151	108,908	40.6%
Lyon	4	12	2,001	135	357	35,443	91	210	14,653	230	579	52,097	28.7%
Mills	23	67	8,089	406	978	108,110	227	491	47,739	656	1,536	163,938	56.6%
Monona	13	40	5,455	328	701	82,897	205	406	32,613	546	1,147	120,965	47.4%
Montgomery	38	116	15,574	475	1,085	122,940	320	606	56,153	833	1,807	194,667	56.2%
O'Brien	22	61	7,167	276	689	72,208	182	385	31,053	480	1,135	110,428	36.2%
Osceola	10	27	3,317	117	280	29,711	83	149	12,266	210	456	45,294	38.3%
Page	57	166	19,878	570	1,295	137,308	370	679	60,371	997	2,140	217,557	54.1%
Palo Alto	19	65	7,819	220	503	47,595	143	291	24,835	382	859	80,249	37.3%
Plymouth	26	80	11,696	420	1,041	106,470	242	444	39,533	688	1,565	157,699	36.9%
Pottawattamie	426	1,353	171,436	4,377	9,252	1,071,891	2,769	5,154	511,010	7,572	15,759	1,754,337	74.5%
Sac	20	64	6,686	213	507	53,393	148	306	24,586	381	877	84,665	43.9%
Shelby	26	84	9,254	288	663	67,962	192	359	29,867	506	1,106	107,083	39.2%
Stoux	26	68	9,116	362	928	90,929	284	631	59,037	672	1,627	159,083	26.7%
Taylor	12	41	5,126	195	457	49,237	134	235	22,333	341	733	76,696	43.0%
Woodbury	393	1,259	163,743	4,521	10,266	1,163,300	2,744	5,685	571,232	7,658	17,210	1,898,275	60.7%
<b>Area Total</b>	<b>1,570</b>	<b>4,881</b>	<b>626,211</b>	<b>18,136</b>	<b>41,317</b>	<b>4,493,321</b>	<b>11,627</b>	<b>22,690</b>	<b>2,145,361</b>	<b>31,333</b>	<b>68,888</b>	<b>7,264,893</b>	<b>52.4%</b>
<b>Area 2 - Northern</b>													
Allamakee	49	173	19,958	274	644	66,118	288	638	58,010	611	1,455	144,086	42.2%
Black Hawk	820	2,658	332,592	5,163	9,600	1,088,332	3,909	7,531	766,027	9,892	19,789	2,186,951	56.2%
Bremer	30	80	9,845	352	807	74,935	231	452	40,874	613	1,339	125,654	37.7%
Buchanan	59	179	21,274	398	918	95,490	319	605	52,210	776	1,702	168,974	46.0%
Butler	27	85	11,433	329	764	72,847	224	433	35,480	580	1,282	119,760	49.5%
Calhoun	18	56	7,165	219	526	54,999	162	360	32,944	399	942	95,108	37.4%
Cerro Gordo	114	370	48,176	1,532	2,863	323,168	1,117	2,059	190,932	2,763	5,292	562,276	49.8%
Chickasaw	18	58	7,376	234	556	55,473	181	392	37,059	433	1,006	99,908	31.7%
Clayton	19	61	8,678	317	685	68,024	288	571	45,887	624	1,317	122,589	31.5%
Delaware	37	114	15,091	318	742	82,840	258	516	43,350	613	1,372	141,281	36.8%
Fayette	73	224	26,826	609	1,369	137,805	541	1,086	101,509	1,223	2,679	266,140	54.7%
Floyd	57	176	21,599	478	1,044	114,133	379	796	69,230	914	2,016	204,962	43.3%
Franklin	25	78	10,354	219	539	55,531	215	488	49,932	459	1,105	115,817	38.2%
Grundy	9	29	3,501	180	461	47,345	109	211	18,674	298	701	69,520	36.5%
Hamilton	33	89	11,355	357	759	79,928	285	575	59,264	675	1,423	150,547	37.9%
Hancock	20	57	7,068	170	428	46,319	162	325	24,904	352	810	78,291	37.8%
Hardin	48	156	16,785	432	1,019	103,314	354	796	72,147	834	1,971	192,246	53.4%
Howard	32	111	13,842	190	392	39,442	144	276	23,919	366	779	77,203	32.1%
Humboldt	17	55	7,021	201	443	46,229	177	344	31,270	395	842	84,520	32.6%
Marshall	149	479	58,882	1,278	2,831	304,238	1,104	2,512	230,418	2,531	5,822	593,538	59.6%
Mitchell	12	36	4,339	158	346	37,872	126	209	18,283	296	591	60,494	25.8%
Pocahontas	16	55	6,449	199	496	52,958	168	354	31,338	383	905	90,745	45.8%
Webster	176	556	70,215	1,712	3,429	393,952	1,141	2,160	207,287	3,029	6,145	671,454	62.7%
Winnebago	26	77	9,653	225	462	50,377	181	407	38,364	432	946	98,394	41.5%
Winneshiek	26	82	9,281	279	560	59,738	212	422	33,859	517	1,064	102,878	35.8%
Worth	13	38	4,834	129	321	31,698	127	274	26,684	269	633	63,216	36.2%
Wright	52	139	19,314	332	736	78,591	324	758	81,175	708	1,633	179,080	53.9%
<b>Area Total</b>	<b>1,975</b>	<b>6,271</b>	<b>782,906</b>	<b>16,284</b>	<b>33,740</b>	<b>3,661,696</b>	<b>12,726</b>	<b>25,550</b>	<b>2,421,030</b>	<b>30,985</b>	<b>65,561</b>	<b>6,865,632</b>	<b>48.4%</b>

**Food Assistance Participation by Case Type and County**

County	FIP Program			Food Assistance Only			Other Programs			TOTAL			PARTICIPATION RATE *
	Households	Recipients	Allotment	Households	Recipients	Allotment	Households	Recipients	Allotment	Households	Recipients	Allotment	
<b>Area 3 - Eastern</b>													
Cedar	11	33	3,785	261	596	65,419	253	612	60,002	525	1,241	129,206	36.4%
Clinton	210	657	85,091	2,165	4,099	472,995	1,664	3,400	356,873	4,039	8,156	914,959	69.4%
Des Moines	213	690	89,066	1,806	3,679	428,412	1,395	2,854	314,156	3,414	7,223	831,634	59.5%
Dubuque	427	1,337	171,334	2,817	5,627	633,713	1,896	3,906	403,263	5,140	10,870	1,208,310	56.1%
Henry	64	209	26,234	526	1,139	118,618	503	1,159	115,772	1,093	2,507	260,624	49.2%
Jackson	63	216	26,354	507	1,086	116,021	406	869	86,076	976	2,171	228,451	43.6%
Lee	145	452	56,862	1,406	2,853	326,307	1,246	2,595	262,493	2,797	5,900	645,662	61.5%
Louisa	32	104	13,223	229	475	53,803	239	567	51,451	500	1,146	118,477	44.1%
Muscatine	144	447	60,522	1,430	2,883	331,915	1,387	3,212	330,767	2,961	6,542	723,204	62.3%
Scott	954	3,091	399,877	7,298	13,583	1,690,734	6,029	13,063	1,491,799	14,281	29,737	3,582,410	80.7%
<b>Area Total</b>	<b>2,263</b>	<b>7,236</b>	<b>932,348</b>	<b>18,445</b>	<b>36,020</b>	<b>4,237,937</b>	<b>15,018</b>	<b>32,237</b>	<b>3,472,652</b>	<b>35,726</b>	<b>75,493</b>	<b>8,642,937</b>	<b>64.9%</b>
<b>Area 4 - Cedar Rapids</b>													
Appanoose	53	172	20,629	562	1,176	126,116	414	674	63,615	1,029	2,022	210,360	55.1%
Benton	43	130	16,388	564	1,253	133,312	367	673	67,178	974	2,056	216,878	46.0%
Davis	16	46	6,028	188	495	53,672	118	202	17,440	322	743	77,140	23.5%
Iowa	20	60	7,789	309	703	75,740	173	336	33,840	502	1,099	117,369	37.0%
Jasper	110	337	40,750	1,253	2,698	301,575	696	1,243	125,505	2,059	4,278	467,830	55.4%
Jefferson	51	148	17,250	656	1,234	139,935	437	725	70,721	1,144	2,107	227,906	49.3%
Johnson	415	1,434	182,601	3,046	6,219	715,407	1,687	3,221	350,704	5,148	10,874	1,248,712	32.0%
Jones	44	150	18,366	439	1,061	116,182	295	601	56,234	778	1,812	190,782	47.0%
Keokuk	18	68	8,860	282	680	75,237	222	468	43,762	522	1,216	125,859	47.3%
Linn	863	2,843	364,778	7,853	16,057	1,836,889	4,379	8,097	856,799	13,095	26,997	3,058,466	68.8%
Mahaska	84	253	32,360	858	1,860	217,914	494	884	91,107	1,436	2,997	341,381	53.0%
Monroe	25	77	10,327	235	510	54,881	147	246	23,028	407	833	88,236	42.8%
Poweshiek	34	112	14,425	376	830	90,017	280	514	43,823	690	1,456	148,265	39.5%
Tama	29	85	9,089	486	1,183	120,770	277	583	58,531	792	1,851	188,390	47.6%
Van Buren	18	55	7,012	178	449	47,806	165	276	26,530	361	780	81,348	38.0%
Wapello	209	634	78,775	1,822	3,600	427,818	1,245	2,197	216,910	3,276	6,431	723,503	55.3%
Washington	36	117	14,084	514	1,226	129,523	323	635	58,966	873	1,978	202,573	48.3%
<b>Area Total</b>	<b>2,068</b>	<b>6,721</b>	<b>847,511</b>	<b>19,621</b>	<b>41,234</b>	<b>4,662,794</b>	<b>11,719</b>	<b>21,575</b>	<b>2,204,693</b>	<b>33,408</b>	<b>69,530</b>	<b>7,714,998</b>	<b>50.1%</b>
<b>Area 5 - Des Moines</b>													
Adair	10	35	5,094	187	360	37,001	163	377	32,741	360	772	74,836	54.8%
Adams	12	33	2,570	76	167	17,713	90	220	22,579	178	420	42,862	48.7%
Boone	58	180	19,874	570	1,175	131,511	523	1,135	117,647	1,151	2,490	269,032	39.9%
Clarke	29	86	10,222	313	648	73,319	324	732	75,960	666	1,466	159,501	51.6%
Dallas	59	194	23,719	762	1,692	192,178	825	1,949	200,740	1,646	3,835	416,637	40.4%
Decatur	31	96	11,941	306	560	66,050	246	546	52,819	583	1,202	130,810	43.2%
Lucas	22	68	9,589	262	533	58,089	271	651	59,606	555	1,252	127,284	49.8%
Madison	15	41	5,858	288	581	62,498	243	586	58,818	526	1,208	127,174	37.4%
Marion	63	205	24,150	642	1,324	150,141	653	1,474	146,382	1,358	3,003	320,673	50.8%
Polk	1,953	6,386	831,910	16,788	30,693	3,787,403	14,189	32,800	3,540,895	32,930	69,879	8,160,208	72.9%
Ringgold	7	26	3,928	119	258	30,946	142	300	27,570	268	584	62,444	39.8%
Story	108	350	41,241	1,665	2,866	360,883	1,044	2,359	250,221	2,817	5,575	652,345	22.3%
Union	44	132	17,179	468	906	105,451	381	820	82,042	893	1,858	204,672	53.9%
Warren	62	189	23,090	735	1,461	171,051	680	1,638	169,687	1,477	3,288	363,828	47.6%
Wayne	13	37	5,399	165	340	38,089	188	445	44,059	366	822	87,547	47.5%
<b>Area Total</b>	<b>2,486</b>	<b>8,058</b>	<b>1,035,764</b>	<b>23,326</b>	<b>43,564</b>	<b>5,282,323</b>	<b>19,962</b>	<b>46,032</b>	<b>4,881,766</b>	<b>45,774</b>	<b>97,654</b>	<b>11,199,853</b>	<b>57.5%</b>
<b>State Total</b>	<b>10,362</b>	<b>33,167</b>	<b>4,224,740</b>	<b>95,812</b>	<b>195,875</b>	<b>22,338,071</b>	<b>71,052</b>	<b>148,084</b>	<b>15,125,502</b>	<b>177,226</b>	<b>377,126</b>	<b>41,688,313</b>	<b>54.5%</b>

\* Participation Rate is the percentage of individuals at or below 160%FPL who are receiving Food Assistance in a given area (County/SA/State). It is calculated by dividing the number of Food Assistance Recipients in an area (county/SA/State) by the number of persons in that area at or below 160% of the Federal Poverty Level. (As counted in the 2006-2010 American Community Survey)